

Go to www.vtechphones.com to register your product for enhanced warranty support and the latest Vtech product news.

VM5254-2 VM5254-2 Video Baby Monitor



For more support information:



vtech® Quick start guide

©2015 VTech Communications, Inc. All rights reserved. This manual contains information regarding the use of the product. The information is subject to change without notice. The information in this manual is not intended to be used for any other purpose. For more information, please visit www.vtechphones.com.

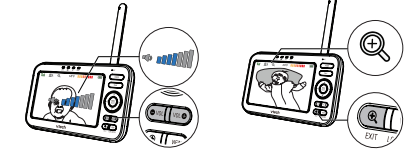
DISCLAIMER AND LIMITATION OF LIABILITY

Model	
Parent unit power adapter Output: DC 5V 1.0A	Model: VTE5001
Parent unit power adapter Input: AC 100-240V 50/60Hz	Model: VTE5002
Power requirements	
Parent unit power adapter: DC 5V 1.0A	Model: VTE5001
Parent unit power adapter: AC 100-240V 50/60Hz	Model: VTE5002
Nominal effective range	
Parent unit power adapter: DC 5V 1.0A	Model: VTE5001
Parent unit power adapter: AC 100-240V 50/60Hz	Model: VTE5002
LCD	
Parent unit: 2.8" TFT-LCD	Model: VTE5001
Parent unit: 2.8" TFT-LCD	Model: VTE5002
Channels	
Parent unit: 20	Model: VTE5001
Parent unit: 20	Model: VTE5002
Parent unit: 2.0" TFT-LCD	
Parent unit: 2.0" TFT-LCD	Model: VTE5001
Parent unit: 2.0" TFT-LCD	Model: VTE5002
Frequency channel	
Parent unit: 2.0" TFT-LCD	Model: VTE5001
Parent unit: 2.0" TFT-LCD	Model: VTE5002

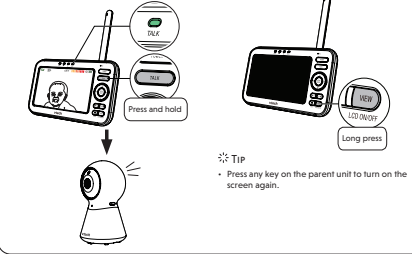
TECHNICAL SPECIFICATIONS

BASIC OPERATION - PARENT UNIT

Adjust speaker volume
Press **↑** / **↓** / **Vol** / **+** / **+** to adjust your parent unit speaker volume.



Talk to your baby unit
Press and hold **TALK** and speak to your parent unit. Your voice is transmitted to the baby unit. Release **TALK** when finish talking and hear your baby again.



Turn off the screen
Press and hold **LCD ON/OFF** to switch off the screen. You can still hear sound from the baby unit.

TIP
Press any key on the parent unit to turn on the screen again.

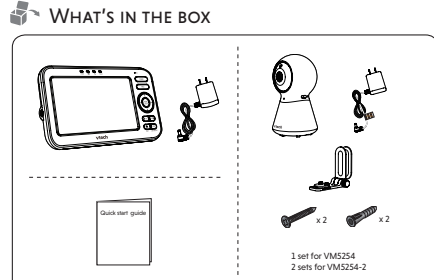
IMPORTANT SAFETY INSTRUCTIONS

1. The applied nameplate is located at the bottom of the baby unit's base.
2. When using your equipment, basic safety precautions should always be followed to reduce the risk of fire, electric shock and injury, including the following:
 1. Follow all warnings and instructions marked on the product.
 2. Adult setup is required.
 3. Do not install the baby unit at a height above 1 meters.
 4. This product is not a substitute for adult supervision of the infant. Supervising the infant is the parent's or caregiver's responsibility. This product could cause overheating, and therefore you should not assume it will continue working properly for any given period of time. Further, this is not a medical device and should not be used as such. This product is intended to assist you in supervising your baby.
 5. Do not use this product near water. For example, do not use it near a bathtub, wash basin, kitchen sink, laundry tub, or swimming pool. If it is wet equipment, do not use it.
 6. **CAUTION:** Use only the battery provided. There may be a risk of explosion if a wrong type of battery is used for the device unit. The battery cannot be subjected to high or low extreme temperatures and low air pressure at high altitude during use, storage or transportation. Disposal of battery into fire of a hot oven, or mechanically crushing or cutting of the battery can result in an explosion. Leaving the battery in an extremely high temperature surrounding environment can result in an explosion or the leakage of flammable liquid or gas. Battery subjected to external low air pressure may result in an explosion or the leakage of flammable liquid or gas. Disposal of used battery according to the information in the **Battery** section of this product.
 7. Use only the adapters included with this product. Incorrect adapter polarity or voltage can result in fire or explosion.

CAUTION
Use and store the product at a temperature between 32°F and 104°F.
Do not expose the product to extreme cold, heat or direct sunlight. Do not put the product close to a heating source. Batteries should not be exposed to excessive heat such as bright sunshine or fire.
Warning - Strangulation Hazard - Children have STRANGLING cords. Keep this cord out of the reach of children (more than 3ft (0.9m) away). Do not remove this tag.
Warning - Choking Hazard - Small parts. Do not use with children under 3 years old.

1. Use and store the product at a temperature between 32°F and 104°F.
2. Do not expose the product to extreme cold, heat or direct sunlight. Do not put the product close to a heating source. Batteries should not be exposed to excessive heat such as bright sunshine or fire.
3. Rechargeable battery information:
 - Rechargeable battery information: Ni-MH (NiMH) 2700mAh
 - Model Number: BP763
 - Manufacturer: Thompson Tactical Battery Co., Ltd.
4. The power adapters are intended to be correctly oriented in a vertical or floor mount position. The prongs are not designed to be placed in place if it is plugged into a socket, unless the label is clearly marked.
5. For applicable equipment, the socket outlet shall be located near the equipment and shall be easily accessible.
6. This product should not be placed in any area where proper ventilation is not provided. Slots and openings in the back or bottom of this product are provided for ventilation. To protect them from obstructing, these openings must not be blocked by placing the product on a soft surface such as a bed, sofa or rug. The product should never be placed near or over a radiator or heat register.

WHAT'S IN THE BOX

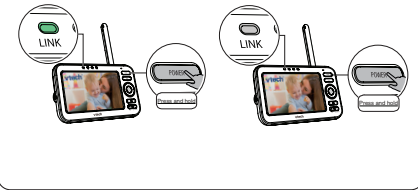


CONNECT THE BABY MONITOR

1. Connect the baby unit to the parent unit.
 2. Connect the power adapter to the parent unit.
 3. Connect the power adapter to the parent unit.
 4. Connect the power adapter to the parent unit.
 5. Connect the power adapter to the parent unit.
 6. Connect the power adapter to the parent unit.
- NOTES**
- The rechargeable battery in the parent unit is built-in.
 - Use only the power adapters supplied with this product.
 - Make sure the baby monitor is not connected to a switch-controlled electric outlet.
 - Connect the power adapters in a vertical or floor mount position only. The adapters' prongs are not designed to hold the weight of baby monitor, so do not connect them to any ceiling, under-the-table, or cabinet outlets. Otherwise, the adapters may not properly connect to the outlets.
 - Make sure the parent unit, the baby units and the power adapter cords are out of reach of children.

POWER ON OR OFF THE BABY MONITOR

1. Slide the **ON/OFF** switch to power on or off your baby unit.
2. Press and hold **POWER** to power on or off your parent unit.



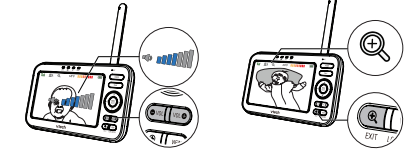
POSITIONING THE BABY MONITOR

1. **CAUTION**
• Keep the baby unit out of the reach of your baby. Never place or mount the baby unit inside the baby's crib or playpen.
2. Position the baby unit at a safe distance.
3. **CAUTION**
• The default volume of your parent unit is level 4, and the maximum volume is level 7. If you experience high-pitched screeching noise from your baby monitor while positioning:
• Make sure your baby unit and parent unit are more than 3 feet (1 meter) apart, OR
• Lower the volume of your parent unit.
4. **NOTE**
• To avoid interference from other electronic devices, place your baby monitor at least 3 feet (1 meter) away from devices such as wireless routers, microwaves, cell phones and computers.

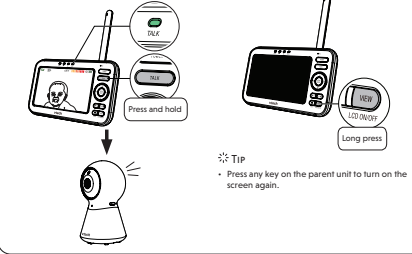
4. **STATUS CHECK**
Once you power on both your baby unit and parent unit, your parent unit displays image from the baby unit, and the **LINK LED** light turns on.
The baby unit **ON LED** light turns on.

BASIC OPERATION - PARENT UNIT

Adjust speaker volume
Press **↑** / **↓** / **Vol** / **+** / **+** to adjust your parent unit speaker volume.



Talk to your baby unit
Press and hold **TALK** and speak to your parent unit. Your voice is transmitted to the baby unit. Release **TALK** when finish talking and hear your baby again.



Turn off the screen
Press and hold **LCD ON/OFF** to switch off the screen. You can still hear sound from the baby unit.

TIP
Press any key on the parent unit to turn on the screen again.

OVERVIEW - BABY UNIT

1. Light sensor
2. Camera
3. Glass lens
4. Microphone
5. Night light
6. On/Off switch
7. On/Off LED light
8. Speaker
9. Night light on/off key
10. Temperature sensor
11. Pair key
12. Power jack
13. Slots for wall mounting
14. Antenna
15. Antenna
16. Antenna
17. Stand
18. Power jack

NEED HELP?

For operations and guides to help you operate your video monitor, and for the latest information and support, check out our online help topics and FAQs.
Use your smartphone or mobile device to access our online help.
• Go to <https://help.vtechphones.com/vm5254> or <https://help.vtechphones.com/vm5254-2>, OR
• Scan the QR code on the right. Launch the camera app or QR code scanner app on your smartphone or tablet. Hold the device's camera up to the QR code and frame it. Tap the pop-up notification to be redirected to the online help page.
• If the QR code is not clearly displayed, adjust your camera's focus by moving your device closer or further away until the image is clear.
You can also call our Customer Support at 1 (800) 995-9511 [in US] or 1 (800) 267-7377 [in Canada] for help.

PARENT UNIT ICONS

Main menu	Sub-menu	Main menu	Sub-menu
Brightness	• Adjust the parent unit's LCD brightness.	Night light	ON/OFF Turn on/off night light
	• Adjust the baby unit's speaker volume.		• Select one of seven night light colors.
Camera settings	• Baby unit speaker volume	OFF	• Change to all seven colors in cycles.
	• Single mode		60min 30min 15min • Set timer to turn the night light off.
Monitoring mode (For VM5254-2 only)	• Split mode	ON/OFF	• Select one of seven night light colors.
	• Patrol mode		• Change to all seven colors in cycles.
Lullaby	• Play/Stop lullaby	AUTO	• Turn on/off the adaptive night light feature. When this feature is on, the baby unit detects the ambient light. If the room is bright, the night light adjusts itself to be brighter; if the room is dim, the night light adjusts itself to be less bright.
	• Select one of the soothing sounds, or white noise.		• Select to select the night light to always on.
Lullaby	• Select one of the five melodies.	ON/OFF	• Turn on/off the adaptive night light feature. When this feature is on, the baby unit detects the ambient light. If the room is bright, the night light adjusts itself to be brighter; if the room is dim, the night light adjusts itself to be less bright.
	• Play all melodies.		• Turn on/off the adaptive night light feature. When this feature is on, the baby unit detects the ambient light. If the room is bright, the night light adjusts itself to be brighter; if the room is dim, the night light adjusts itself to be less bright.
Temperature	• Set the minimum temperature.	ON/OFF	• Turn on/off the adaptive night light feature. When this feature is on, the baby unit detects the ambient light. If the room is bright, the night light adjusts itself to be brighter; if the room is dim, the night light adjusts itself to be less bright.
	• Set the maximum temperature.		• Turn on/off the adaptive night light feature. When this feature is on, the baby unit detects the ambient light. If the room is bright, the night light adjusts itself to be brighter; if the room is dim, the night light adjusts itself to be less bright.
Temperature	• Set the minimum temperature.	ON/OFF	• Turn on/off the adaptive night light feature. When this feature is on, the baby unit detects the ambient light. If the room is bright, the night light adjusts itself to be brighter; if the room is dim, the night light adjusts itself to be less bright.
	• Set the maximum temperature.		• Turn on/off the adaptive night light feature. When this feature is on, the baby unit detects the ambient light. If the room is bright, the night light adjusts itself to be brighter; if the room is dim, the night light adjusts itself to be less bright.
Temperature	• Set the minimum temperature.	ON/OFF	• Turn on/off the adaptive night light feature. When this feature is on, the baby unit detects the ambient light. If the room is bright, the night light adjusts itself to be brighter; if the room is dim, the night light adjusts itself to be less bright.
	• Set the maximum temperature.		• Turn on/off the adaptive night light feature. When this feature is on, the baby unit detects the ambient light. If the room is bright, the night light adjusts itself to be brighter; if the room is dim, the night light adjusts itself to be less bright.
Temperature	• Set the minimum temperature.	ON/OFF	• Turn on/off the adaptive night light feature. When this feature is on, the baby unit detects the ambient light. If the room is bright, the night light adjusts itself to be brighter; if the room is dim, the night light adjusts itself to be less bright.
	• Set the maximum temperature.		• Turn on/off the adaptive night light feature. When this feature is on, the baby unit detects the ambient light. If the room is bright, the night light adjusts itself to be brighter; if the room is dim, the night light adjusts itself to be less bright.
Temperature	• Set the minimum temperature.	ON/OFF	• Turn on/off the adaptive night light feature. When this feature is on, the baby unit detects the ambient light. If the room is bright, the night light adjusts itself to be brighter; if the room is dim, the night light adjusts itself to be less bright.
	• Set the maximum temperature.		• Turn on/off the adaptive night light feature. When this feature is on, the baby unit detects the ambient light. If the room is bright, the night light adjusts itself to be brighter; if the room is dim, the night light adjusts itself to be less bright.
Temperature	• Set the minimum temperature.	ON/OFF	• Turn on/off the adaptive night light feature. When this feature is on, the baby unit detects the ambient light. If the room is bright, the night light adjusts itself to be brighter; if the room is dim, the night light adjusts itself to be less bright.
	• Set the maximum temperature.		• Turn on/off the adaptive night light feature. When this feature is on, the baby unit detects the ambient light. If the room is bright, the night light adjusts itself to be brighter; if the room is dim, the night light adjusts itself to be less bright.
Temperature	• Set the minimum temperature.	ON/OFF	• Turn on/off the adaptive night light feature. When this feature is on, the baby unit detects the ambient light. If the room is bright, the night light adjusts itself to be brighter; if the room is dim, the night light adjusts itself to be less bright.
	• Set the maximum temperature.		• Turn on/off the adaptive night light feature. When this feature is on, the baby unit detects the ambient light. If the room is bright, the night light adjusts itself to be brighter; if the room is dim, the night light adjusts itself to be less bright.
Temperature	• Set the minimum temperature.	ON/OFF	• Turn on/off the adaptive night light feature. When this feature is on, the baby unit detects the ambient light. If the room is bright, the night light adjusts itself to be brighter; if the room is dim, the night light adjusts itself to be less bright.
	• Set the maximum temperature.		• Turn on/off the adaptive night light feature. When this feature is on, the baby unit detects the ambient light. If the room is bright, the night light adjusts itself to be brighter; if the room is dim, the night light adjusts itself to be less bright.
Temperature	• Set the minimum temperature.	ON/OFF	• Turn on/off the adaptive night light feature. When this feature is on, the baby unit detects the ambient light. If the room is bright, the night light adjusts itself to be brighter; if the room is dim, the night light adjusts itself to be less bright.
	• Set the maximum temperature.		• Turn on/off the adaptive night light feature. When this feature is on, the baby unit detects the ambient light. If the room is bright, the night light adjusts itself to be brighter; if the room is dim, the night light adjusts itself to be less bright.
Temperature	• Set the minimum temperature.	ON/OFF	• Turn on/off the adaptive night light feature. When this feature is on, the baby unit detects the ambient light. If the room is bright, the night light adjusts itself to be brighter; if the room is dim, the night light adjusts itself to be less bright.
	• Set the maximum temperature.		• Turn on/off the adaptive night light feature. When this feature is on, the baby unit detects the ambient light. If the room is bright, the night light adjusts itself to be brighter; if the room is dim, the night light adjusts itself to be less bright.
Temperature	• Set the minimum temperature.	ON/OFF	• Turn on/off the adaptive night light feature. When this feature is on, the baby unit detects the ambient light. If the room is bright, the night light adjusts itself to be brighter; if the room is dim, the night light adjusts itself to be less bright.
	• Set the maximum temperature.		• Turn on/off the adaptive night light feature. When this feature is on, the baby unit detects the ambient light. If the room is bright, the night light adjusts itself to be brighter; if the room is dim, the night light adjusts itself to be less bright.
Temperature	• Set the minimum temperature.	ON/OFF	• Turn on/off the adaptive night light feature. When this feature is on, the baby unit detects the ambient light. If the room is bright, the night light adjusts itself to be brighter; if the room is dim, the night light adjusts itself to be less bright.
	• Set the maximum temperature.		• Turn on/off the adaptive night light feature. When this feature is on, the baby unit detects the ambient light. If the room is bright, the night light adjusts itself to be brighter; if the room is dim, the night light adjusts itself to be less bright.
Temperature	• Set the minimum temperature.	ON/OFF	• Turn on/off the adaptive night light feature. When this feature is on, the baby unit detects the ambient light. If the room is bright, the night light adjusts itself to be brighter; if the room is dim, the night light adjusts itself to be less bright.
	• Set the maximum temperature.		• Turn on/off the adaptive night light feature. When this feature is on, the baby unit detects the ambient light. If the room is bright, the night light adjusts itself to be brighter; if the room is dim, the night light adjusts itself to be less bright.
Temperature	• Set the minimum temperature.	ON/OFF	• Turn on/off the adaptive night light feature. When this feature is on, the baby unit detects the ambient light. If the room is bright, the night light adjusts itself to be brighter; if the room is dim, the night light adjusts itself to be less bright.
	• Set the maximum temperature.		• Turn on/off the adaptive night light feature. When this feature is on, the baby unit detects the ambient light. If the room is bright, the night light adjusts itself to be brighter; if the room is dim, the night light adjusts itself to be less bright.
Temperature	• Set the minimum temperature.	ON/OFF	• Turn on/off the adaptive night light feature. When this feature is on, the baby unit detects the ambient light. If the room is bright, the night light adjusts itself to be brighter; if the room is dim, the night light adjusts itself to be less bright.
	• Set the maximum temperature.		• Turn on/off the adaptive night light feature. When this feature is on, the baby unit detects the ambient light. If the room is bright, the night light adjusts itself to be brighter; if the room is dim, the night light adjusts itself to be less bright.
Temperature	• Set the minimum temperature.	ON/OFF	• Turn on/off the adaptive night light feature. When this feature is on, the baby unit detects the ambient light. If the room is bright, the night light adjusts itself to be brighter; if the room is dim, the night light adjusts itself to be less bright.
	• Set the maximum temperature.		• Turn on/off the adaptive night light feature. When this feature is on, the baby unit detects the ambient light. If the room is bright, the night light adjusts itself to be brighter; if the room is dim, the night light adjusts itself to be less bright.
Temperature	• Set the minimum temperature.	ON/OFF	• Turn on/off the adaptive night light feature. When this feature is on, the baby unit detects the ambient light. If the room is bright, the night light adjusts itself to be brighter; if the room is dim, the night light adjusts itself to be less bright.
	• Set the maximum temperature.		• Turn on/off the adaptive night light feature. When this feature is on, the baby unit detects the ambient light. If the room is bright, the night light adjusts itself to be brighter; if the room is dim, the night light adjusts itself to be less bright.
Temperature	• Set the minimum temperature.	ON/OFF	• Turn on/off the adaptive night light feature. When this feature is on, the baby unit detects the ambient light. If the room is bright, the night light adjusts itself to be brighter; if the room is dim, the night light adjusts itself to be less bright.
	• Set the maximum temperature.		• Turn on/off the adaptive night light feature. When this feature is on, the baby unit detects the ambient light. If the room is bright, the night light adjusts itself to be brighter; if the room is dim, the night light adjusts itself to be less bright.
Temperature	• Set the minimum temperature.	ON/OFF	• Turn on/off the adaptive night light feature. When this feature is on, the baby unit detects the ambient light. If the room is bright, the night light adjusts itself to be brighter; if the room is dim, the night light adjusts itself to be less bright.
	• Set the maximum temperature.		• Turn on/off the adaptive night light feature. When this feature is on, the baby unit detects the ambient light. If the room is bright, the night light adjusts itself to be brighter; if the room is dim, the night light adjusts itself to be less bright.
Temperature	• Set the minimum temperature.	ON/OFF	• Turn on/off the adaptive night light feature. When this feature is on, the baby unit detects the ambient light. If the room is bright, the night light adjusts itself to be brighter; if the room is dim, the night light adjusts itself to be less bright.
	• Set the maximum temperature.		• Turn on/off the adaptive night light feature. When this feature is on, the baby unit detects the ambient light. If the room is bright, the night light adjusts itself to be brighter; if the room is dim, the night light adjusts itself to be less bright.
Temperature	• Set the minimum temperature.	ON/OFF	• Turn on/off the adaptive night light feature. When this feature is on, the baby unit detects the ambient light. If the room is bright, the night light adjusts itself to be brighter; if the room is dim, the night light adjusts itself to be less bright.
	• Set the maximum temperature.		• Turn on/off the adaptive night light feature. When this feature is on, the baby unit detects the ambient light. If the room is bright, the night light adjusts itself to be brighter; if the room is dim, the night light adjusts itself to be less bright.
Temperature	• Set the minimum temperature.	ON/OFF	• Turn on/off the adaptive night light feature. When this feature is on, the baby unit detects the ambient light. If the room is bright, the night light adjusts itself to be brighter; if the room is dim, the night light adjusts itself to be less bright.
	• Set the maximum temperature.		• Turn on/off the adaptive night light feature. When this feature is on, the baby unit detects the ambient light. If the room is bright, the night light adjusts itself to be brighter; if the room is dim, the night light adjusts itself to be less bright.
Temperature	• Set the minimum temperature.	ON/OFF	• Turn on/off the adaptive night light feature. When this feature is on, the baby unit detects the ambient light. If the room is bright, the night light adjusts itself to be brighter; if the room is dim, the night light adjusts itself to be less bright.
	• Set the maximum temperature.		• Turn on/off the adaptive night light feature. When this feature is on, the baby unit detects the ambient light. If the room is bright, the night light adjusts itself to be brighter; if the room is dim, the night light adjusts itself to be less bright.
Temperature	• Set the minimum temperature.	ON/OFF	• Turn on/off the adaptive night light feature. When this feature is on, the baby unit detects the ambient light. If the room is bright, the night light adjusts itself to be brighter; if the room is dim, the night light adjusts itself to be less bright.
	• Set the maximum temperature.		• Turn on/off the adaptive night light feature. When this feature is on, the baby unit detects the ambient light. If the room is bright, the night light adjusts itself to be brighter; if the room is dim, the night light adjusts itself to be less bright.
Temperature	• Set the minimum temperature.	ON/OFF	• Turn on/off the adaptive night light feature. When this feature is on, the baby unit detects the ambient light. If the room is bright, the night light adjusts itself to be brighter; if the room is dim, the night light adjusts itself to be less bright.
	• Set the maximum temperature.		• Turn on/off the adaptive night light feature. When this feature is on, the baby unit detects the ambient light. If the room is bright, the night light adjusts itself to be brighter; if the room is dim, the night light adjusts itself to be less bright.
Temperature	• Set the minimum temperature.	ON/OFF	• Turn on/off the adaptive night light feature. When this feature is on, the baby unit detects the ambient light. If the room is bright, the night light adjusts itself to be brighter; if the room is dim, the night light adjusts itself to be less bright.
	• Set the maximum temperature.		• Turn on/off the adaptive night light feature. When this feature is on, the baby unit detects the ambient light. If the room is bright, the night light adjusts itself to be brighter; if the room is dim, the night light adjusts itself to be less bright.
Temperature	• Set the minimum temperature.	ON/OFF	• Turn on/off the adaptive night light feature. When this feature is on, the baby unit detects the ambient light. If the room is bright, the night light adjusts itself to be brighter; if the room is dim, the night light adjusts itself to be less bright.
	• Set the maximum temperature.		• Turn on/off the adaptive night light feature. When this feature is on, the baby unit detects the ambient light. If the room is bright, the night light adjusts itself to be brighter; if the room is dim, the night light adjusts itself to be less bright.
Temperature	• Set the minimum temperature.	ON/OFF	• Turn on/off the adaptive night light feature. When this feature is on, the baby unit detects the ambient light. If the room is bright, the night light adjusts itself to be brighter; if the room is dim, the night light adjusts itself to be less bright.
	• Set the maximum temperature.		• Turn on/off the adaptive night light feature. When this feature is on, the baby unit detects the ambient light. If the room is bright, the night light adjusts itself to be brighter; if the room is dim, the night light adjusts itself to be less bright.
Temperature	• Set the minimum temperature.	ON/OFF	• Turn on/off the adaptive night light feature. When this feature is on, the baby unit detects the ambient light. If the room is bright, the night light adjusts itself to be brighter; if the room is dim, the night light adjusts itself to be less bright.
	• Set the maximum temperature.		• Turn on/off the adaptive night light feature. When this feature is on, the baby unit detects the ambient light. If the room is bright, the night light adjusts itself to be brighter; if the room is dim, the night light adjusts itself to be less bright.
Temperature	• Set the minimum temperature.	ON/OFF	• Turn on/off the adaptive night light feature. When this feature is on, the baby unit detects the ambient light. If the room is bright, the night light adjusts itself to be brighter; if the room is dim, the night light adjusts itself to be less bright.
	• Set the maximum temperature.		• Turn on/off the adaptive night light feature. When this feature is on, the baby unit detects the ambient light. If the room is bright, the night light adjusts itself to be brighter; if the room is dim, the night light adjusts itself to be less bright.
Temperature	• Set the minimum temperature.	ON/OFF	• Turn on/off the adaptive night light feature. When this feature is on, the baby unit detects the ambient light. If the room is bright, the night light adjusts itself to be brighter; if the room is dim, the night light adjusts itself to be less bright.
	• Set the maximum temperature.		• Turn on/off the adaptive night light feature. When this feature is on, the baby unit detects the ambient light. If the room is bright, the night light adjusts itself to be brighter; if the room is dim, the night light adjusts itself to be less bright.
Temperature	• Set the minimum temperature.	ON/OFF	• Turn on/off the adaptive night light feature. When this feature is on, the baby unit detects the ambient light. If the room is bright, the night light adjusts itself to be brighter; if the room is dim, the night light adjusts itself to be less bright.
	• Set the maximum temperature.		• Turn on/off the adaptive night light feature. When this feature is on, the baby unit detects the ambient light. If the room is bright, the night light adjusts itself to be brighter; if the room is dim, the night light adjusts itself to be less bright.
Temperature	• Set the minimum temperature.	ON/OFF	• Turn on/off the adaptive night light feature. When this feature is on, the baby unit detects the ambient light. If the room is bright, the night light adjusts itself to be brighter; if the room is dim, the night light adjusts itself to be less bright.
	• Set the maximum temperature.		• Turn on/off the adaptive night light feature. When this feature is on, the baby unit detects the ambient light. If the room is bright, the night light adjusts itself to be brighter; if the room is dim, the night light adjusts itself to be less bright.
Temperature	• Set the minimum temperature.	ON/OFF	• Turn on/off the adaptive night light feature. When this feature is on, the baby unit detects the ambient light. If the room is bright, the night light adjusts itself to be brighter; if the room is dim, the night light adjusts itself to be less bright.
	• Set the maximum temperature.		• Turn on/off the adaptive night light feature. When this feature is on, the baby unit detects the ambient light. If the room is bright, the night light adjusts itself to be brighter; if the room is dim, the night light adjusts itself to be less bright.
Temperature	• Set the minimum temperature.	ON/OFF	• Turn on/off the adaptive night light feature. When this feature is on, the baby unit detects the ambient light. If the room is bright, the night light adjusts itself to be brighter; if the room is dim, the night light adjusts itself to be less bright.
	• Set the maximum temperature.		• Turn on/off the adaptive night light feature. When this feature is on, the baby unit detects the ambient light. If the room is bright, the night light adjusts itself to be brighter; if the room is dim, the night light adjusts itself to be less bright.
Temperature	• Set the minimum temperature.	ON/OFF	• Turn on/off the adaptive night light feature. When this feature is on, the baby unit detects the ambient light. If the room is bright, the night light adjusts itself to be brighter; if the room is dim, the night light adjusts itself to be less bright.
	• Set the maximum temperature.		• Turn on/off the adaptive night light feature. When this feature is on, the baby unit detects the ambient light. If the room is bright, the night light adjusts itself to be brighter; if the room is dim, the night light adjusts itself to be less bright.
Temperature	• Set the minimum temperature.	ON/OFF	• Turn on/off the adaptive night light feature. When this feature is on, the baby unit detects the ambient light. If the room is bright, the night light adjusts itself to be brighter; if the room is dim, the night light adjusts itself to be less bright.
	• Set the maximum temperature.		• Turn on/off the adaptive night light feature. When this feature is on, the baby unit detects the ambient light. If the room is bright, the night light adjusts itself to be brighter; if the room is dim, the night light adjusts itself to be less bright.
Temperature	• Set the minimum temperature.	ON/OFF	• Turn on/off the adaptive night light feature. When this feature is on, the baby unit detects the ambient light. If the room is bright, the night light adjusts itself to be brighter; if the room is dim, the night light adjusts itself to be less bright.
	• Set the maximum temperature.		• Turn on/off the adaptive night light feature. When this feature is on, the baby unit detects the ambient light. If the room is bright, the night light adjusts itself to be brighter; if the room is dim, the night light adjusts itself to be less bright.

