

Go to [www.vtechphones.com](http://www.vtechphones.com) to register your product for enhanced warranty support and the latest Vtech product news.

VM5254  
VM5254-2  
Video Baby Monitor



## vtech® Quick start guide

Copyright © 2013 VTech Communications, Inc. All rights reserved. VTech is a registered trademark of VTech Communications, Inc. in the U.S. and other countries. Patent pending.

Caution: VTech's VTech Baby Monitor (VTech) is not a medical device and is not intended for medical use. It is used under the Creative Commons license. The Screen Monitor (SM) was created by Creative Commons, and is used under the Creative Commons license. The Creative Commons BY-NC-SA license is used under the Creative Commons license.

The Heart Beat sound file was created by Zehnle, and is used under the Creative Commons license.

Parent unit: 3.6V Ni-MH battery  
Parent unit power adapter: SV DC @ 600mA  
Parent unit power adapter: Output: SV DC @ 1A

Power requirements  
Maximum power allowed by FCC and IC: Actual operating range may vary according to environmental conditions at the time of use

Nominal effective range  
Maximum power allowed by FCC and IC: Actual operating range may vary according to environmental conditions at the time of use

Channel  
32  
W/OA/CN 810XZ7Z 200W

Frequency control  
Crystal controlled PLL synthesizer

Transmit frequency  
Baby unit: 2405 ~ 2425 MHz  
Parent unit: 2405 ~ 2425 MHz

Channel  
32  
W/OA/CN 810XZ7Z 200W

Nominal effective range  
Maximum power allowed by FCC and IC: Actual operating range may vary according to environmental conditions at the time of use

Channel  
32  
W/OA/CN 810XZ7Z 200W

Frequency control  
Crystal controlled PLL synthesizer

Transmit frequency  
Baby unit: 2405 ~ 2425 MHz  
Parent unit: 2405 ~ 2425 MHz

Channel  
32  
W/OA/CN 810XZ7Z 200W

Nominal effective range  
Maximum power allowed by FCC and IC: Actual operating range may vary according to environmental conditions at the time of use

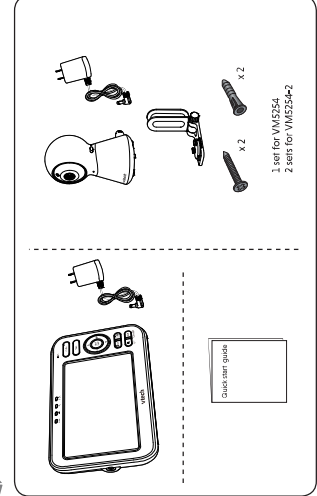
Channel  
32  
W/OA/CN 810XZ7Z 200W

## IMPORTANT SAFETY INSTRUCTIONS

The safety information is located at the bottom of the baby unit's base. When using your equipment, basic safety precautions should always be followed. Read the instructions, electric shock and injury, and following the following:

1. Follow all warnings and instructions included on the product.
2. CAUTION: Do not install the baby unit at a height greater than 3 feet (0.9 m).
3. This product is not a substitute for a child-proofing device. Do not use the product to restrict a child's movement. The product is intended for use as a baby monitor. Do not use the product to restrict a child's movement. The product is intended for use as a baby monitor. Do not use the product to restrict a child's movement.
4. Do not use the product near water, swimming pools, hot tubs, or other bodies of water. Do not use the product near flammable liquids, gases, or vapors.
5. Do not use the product near high voltage power lines or other electrical equipment.
6. CAUTION: Use only the battery provided. There may be a risk of fire or explosion if the battery is not correctly inserted into the product. Do not use the product with a damaged battery. Do not use the product with a battery that is not the original Vtech battery. Do not use the product with a battery that is not the original Vtech battery.
7. Do not use the product with a damaged battery. Do not use the product with a battery that is not the original Vtech battery. Do not use the product with a battery that is not the original Vtech battery.
8. Do not use the product with a damaged battery. Do not use the product with a battery that is not the original Vtech battery. Do not use the product with a battery that is not the original Vtech battery.
9. Do not use the product with a damaged battery. Do not use the product with a battery that is not the original Vtech battery. Do not use the product with a battery that is not the original Vtech battery.
10. Do not use the product with a damaged battery. Do not use the product with a battery that is not the original Vtech battery. Do not use the product with a battery that is not the original Vtech battery.
11. Do not use the product with a damaged battery. Do not use the product with a battery that is not the original Vtech battery. Do not use the product with a battery that is not the original Vtech battery.
12. Do not use the product with a damaged battery. Do not use the product with a battery that is not the original Vtech battery. Do not use the product with a battery that is not the original Vtech battery.
13. Do not use the product with a damaged battery. Do not use the product with a battery that is not the original Vtech battery. Do not use the product with a battery that is not the original Vtech battery.
14. Do not use the product with a damaged battery. Do not use the product with a battery that is not the original Vtech battery. Do not use the product with a battery that is not the original Vtech battery.
15. Do not use the product with a damaged battery. Do not use the product with a battery that is not the original Vtech battery. Do not use the product with a battery that is not the original Vtech battery.
16. Do not use the product with a damaged battery. Do not use the product with a battery that is not the original Vtech battery. Do not use the product with a battery that is not the original Vtech battery.
17. Do not use the product with a damaged battery. Do not use the product with a battery that is not the original Vtech battery. Do not use the product with a battery that is not the original Vtech battery.

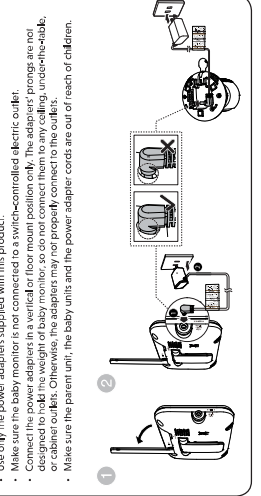
## WHAT'S IN THE BOX



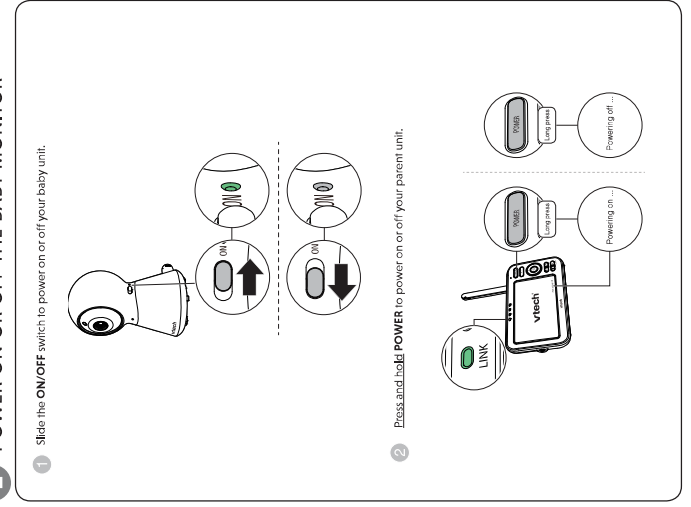
## CONNECT THE BABY MONITOR

**NOTES**

- Use only the power adapters supplied with this product.
- Make sure the baby monitor is not connected to a switched-outlet, electric outlet, designed to lock the weight of baby monitor, so do not connect them to any outlet, undesignated, or cabinet outlet. Otherwise, the adapters may not properly connect to the outlets.
- Make sure the parent unit, the baby units and the power adapter cords are out of reach of children.



## POWER ON OR OFF THE BABY MONITOR



## BASIC OPERATION - PARENT UNIT

**Adjust speaker volume**  
Press **Vol** / **Vol** to adjust your parent unit speaker volume. For details, refer to **Sound sensitivity and sound activation**.

**Zoom**  
Press **Zoom** to zoom in or out.

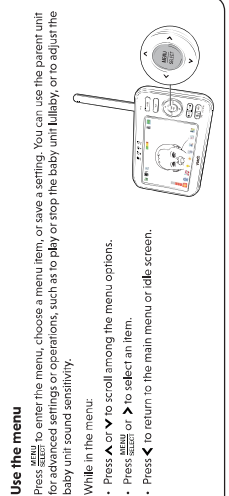
**Turn off the screen**  
Press and hold **EXIT** to switch off the screen. You can still hear sound from the baby unit.

**Tip**  
Press any keys on the parent unit to turn on the screen again.

**Talk to your baby unit**  
Press and hold **TALK** and speak to your parent unit. Your voice is transmitted to the baby unit.

**Adjust speaker volume**  
Press **Vol** / **Vol** to adjust your parent unit speaker volume. For details, refer to **Sound sensitivity and sound activation**.

## OVERVIEW - PARENT UNIT



## OVERVIEW - PARENT UNIT

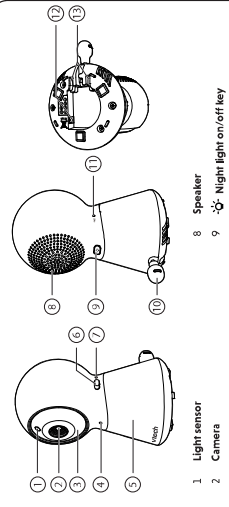
**Use the menu**  
Press **Menu** to enter the menu, choose a menu item, or save a setting. You can use the parent unit for advanced settings or operations, such as play or stop the baby unit lullaby, or to adjust the baby unit sound sensitivity.

**While in the menu:**

- Press **Left** or **Right** to scroll among the menu options.
- Press **Enter** or **Exit** to select an item.
- Press **Back** to return to the main menu or talk screen.



## OVERVIEW - BABY UNIT



## OVERVIEW - BABY UNIT

**On/Off LED light**  
On/Off LED light is turned on and is paired to the parent unit.

- Flashes when the baby unit is not being viewed, or when the link to the parent unit is lost.

## GET HELP WITH THE ONLINE TOPICS

For operations and guides to help you using your video monitor, and for latest information and support, go and check the online help topics and online FAQs. Use your smartphone or mobile device to access our online help.

- Go to <https://help.vtechphones.com/vm5254> OR
- Scan the QR code on the right. Launch the camera app or QR code scanner app on your smartphone or tablet. Hold the device's camera up to the QR code and frame it. Tap the notification to trigger the redirection of the online QR code. If the QR code is not clearly displayed, adjust your camera's focus by moving your device closer or further away until it is clear.

## POSITIONING THE BABY MONITOR



**CAUTION**  
The safety of your baby is our top priority. To ensure the best possible performance, please follow these guidelines:

- Do not use the product in areas with high electromagnetic interference, such as near power lines, cell phone towers, or other electronic devices.
- Do not use the product in areas with high humidity or moisture.
- Do not use the product in areas with high temperature.

**NOTE**  
To ensure the best possible performance, please follow these guidelines:

- Do not use the product in areas with high electromagnetic interference, such as near power lines, cell phone towers, or other electronic devices.
- Do not use the product in areas with high humidity or moisture.
- Do not use the product in areas with high temperature.

**NOTE**  
To ensure the best possible performance, please follow these guidelines:

- Do not use the product in areas with high electromagnetic interference, such as near power lines, cell phone towers, or other electronic devices.
- Do not use the product in areas with high humidity or moisture.
- Do not use the product in areas with high temperature.

**NOTE**  
To ensure the best possible performance, please follow these guidelines:

- Do not use the product in areas with high electromagnetic interference, such as near power lines, cell phone towers, or other electronic devices.
- Do not use the product in areas with high humidity or moisture.
- Do not use the product in areas with high temperature.

## STATUS CHECK

Once you power on both your baby unit and parent unit, your parent unit displays image from the baby unit, and the LINK LED light turns on.

The ON/OFF LED light of baby unit turns on.

## ADJUST SOUND SENSITIVITY AND SOUND ACTIVATION

### Adjust sound detection sensitivity

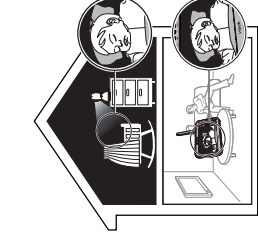
With sound sensitivity setting, you can choose to hear sounds from the baby unit all the time, or only when sounds that exceed a certain level.



Parent unit setting	What happens...	You may experience...	What you could do...
Sounder volume LOW	Sounder will detect all sounds including sounder.	Difficult to hear baby unit's sounder when it is turned on.	Press any button on parent unit to activate sounder. If you are using a line or corded telephone, get out of the room and release it to minimize feedback.
Sounder volume (Default)	Sounder will detect all sounds including sounder.	Sounder will detect all sounds including sounder.	Press any button on parent unit to activate sounder. If you are using a line or corded telephone, get out of the room and release it to minimize feedback.
Sounder volume MAX	Sounder will detect all sounds including sounder.	Sounder will detect all sounds including sounder.	Press any button on parent unit to activate sounder. If you are using a line or corded telephone, get out of the room and release it to minimize feedback.
Sounder volume Low/Medium	Sounder will detect all sounds including sounder.	Sounder will detect all sounds including sounder.	Press any button on parent unit to activate sounder. If you are using a line or corded telephone, get out of the room and release it to minimize feedback.

For details, please see Adjust the sound sensitivity of the baby unit in the User's manual.

### NIGHT VISION



The baby unit has infrared LEDs that are active in a dark room. When the baby unit being viewed detects low light level, the infrared LEDs are switched on automatically. The images from the baby unit are in black and white, and appear on the screen.

**NOTES**

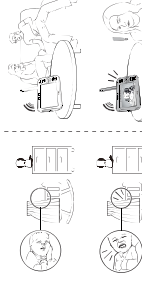
- In normal use, you see a short white glare on the screen. This is the light from the baby unit adapting to the dark environment.
- When the infrared LEDs are on, the images are in black and white. This is normal.

**TIP**

- Depending on the surroundings and other factors, the quality of the images may vary. Adjust the baby unit's image quality and the brightness of the baby unit's display to prevent glare and blurry images.

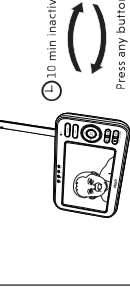
### Sound activated screen

When sound activation is on, the parent unit screen stays off to save power when the baby unit detects no sound. When the baby unit detects a sound, the parent unit screen turns on automatically. It will then turn off again after 50 seconds of no sound detection.



### DIM MODE

With dim mode preset to on, your parent unit display will turn off after 10 minutes of inactivity in which there is neither key pressed nor alert received from the baby unit.



**NOTE**

- If you do not want LCD to dim automatically, turn off the Dim Mode.

## FOR VM5254-2 ONLY

### Status check - Two baby units

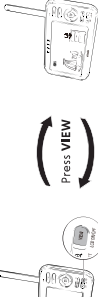
If you are viewing baby unit ①, press the **POWER** LED light of baby unit ② turns on. As baby unit ② is not being viewed, its **POWER** LED light flashes.

**NOTE**

- If you power on only one baby unit, you may see the parent unit displaying ① and then ②. **Do not link to CAM #1** if represents the baby unit number, and the **LINK** LED light flashing. Press **VIEW** in **Single CAM** or **Parrot** mode to switch to the baby unit you have powered on.

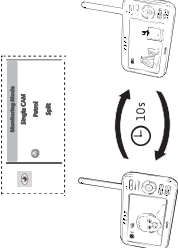
### Change different views - Single CAM

In **Single CAM** or **Parrot** mode, press **VIEW** to switch between the image of baby units ① and ②.



### Change different views - Parrot

Select **Parrot** as your monitoring mode to alternate view the image from baby units ① and ② every 10 seconds.



## THE RBRC® SEAL

The RBRC® seal on the Ni-MH battery indicates that Vtech Communications, Inc. is voluntarily participating in the RBRC program. This seal is placed on all new batteries at the end of their useful lives, when taken out of service within the United States and Canada. The RBRC program provides a convenient alternative to recycling used Ni-MH batteries into the trash or recycling bins. The RBRC program provides a convenient alternative to recycling used Ni-MH batteries into the trash or recycling bins. The RBRC program provides a convenient alternative to recycling used Ni-MH batteries into the trash or recycling bins. The RBRC program provides a convenient alternative to recycling used Ni-MH batteries into the trash or recycling bins.

## FCC AND IC REGULATIONS

FCC Part 15... This device complies with Part 15 of the FCC rules. Operation is subject to the following two conditions: (1) This device may not cause harmful interference, and (2) this device must accept any interference received, including interference that may cause undesired operation. The terms 'FCC' before the certification/reparation number only specifies that the Industry Canada technical specifications were certified. This device complies with the technical specifications of the FCC and IC. The terms 'FCC' before the certification/reparation number only specifies that the Industry Canada technical specifications were certified. This device complies with the technical specifications of the FCC and IC.

Industry Canada... This device complies with the technical specifications of the FCC and IC. The terms 'FCC' before the certification/reparation number only specifies that the Industry Canada technical specifications were certified. This device complies with the technical specifications of the FCC and IC. The terms 'FCC' before the certification/reparation number only specifies that the Industry Canada technical specifications were certified. This device complies with the technical specifications of the FCC and IC.

RF radiation exposure... This device complies with the technical specifications of the FCC and IC. The terms 'FCC' before the certification/reparation number only specifies that the Industry Canada technical specifications were certified. This device complies with the technical specifications of the FCC and IC. The terms 'FCC' before the certification/reparation number only specifies that the Industry Canada technical specifications were certified. This device complies with the technical specifications of the FCC and IC.

CALIFORNIA ENERGY MODE CHARGING TESTING MODE... This device complies with the technical specifications of the FCC and IC. The terms 'FCC' before the certification/reparation number only specifies that the Industry Canada technical specifications were certified. This device complies with the technical specifications of the FCC and IC. The terms 'FCC' before the certification/reparation number only specifies that the Industry Canada technical specifications were certified. This device complies with the technical specifications of the FCC and IC.

California Energy Commission Battery... This device complies with the technical specifications of the FCC and IC. The terms 'FCC' before the certification/reparation number only specifies that the Industry Canada technical specifications were certified. This device complies with the technical specifications of the FCC and IC. The terms 'FCC' before the certification/reparation number only specifies that the Industry Canada technical specifications were certified. This device complies with the technical specifications of the FCC and IC.

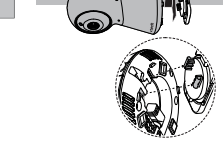
## MOUNT THE BABY UNIT ON DRY WALL (OPTIONAL)

### NOTES

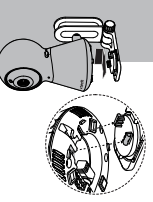
Check for reception strength and camera angle before drilling the holes. If you drill the holes into an object other than a stud, insert the wall anchors into the holes, tap gently on the ends with a hammer until the wall anchors are flush with the wall.



Align the wall mount bracket and screws with the holes in the wall as shown. Tighten the screw in the middle hole first, so that the wall mount bracket position is fixed. You can tighten the other screw in the top hole.



Place the camera unit on the wall mount bracket, and then slide it forward until it locks into place. Align the knobs on the wall mount bracket with the slots on the camera unit, and slide the knobs down until they lock into place.



You can maximize your camera unit's viewing angle by tilting the wall mount bracket. Hold the camera unit, and then rotate the knob in anticlockwise direction. This will loosen the joint of the wall mount bracket. If your camera unit is up or down to adjust to your preferred angle. Then, rotate the knob in clockwise direction to tighten the joint and secure the angle.



## LIMITED WARRANTY

What does this limited warranty cover?... This limited warranty covers the baby unit and the parent unit for a period of 12 months from the date of purchase. The warranty is void if the product is used in a manner not intended by Vtech. The warranty is void if the product is used in a manner not intended by Vtech.

How long is the limited warranty period?... This limited warranty covers the baby unit and the parent unit for a period of 12 months from the date of purchase. The warranty is void if the product is used in a manner not intended by Vtech. The warranty is void if the product is used in a manner not intended by Vtech.

What is not covered by this limited warranty?... This limited warranty does not cover damage caused by misuse, accidents, or unauthorized repairs. It also does not cover the parent unit's battery or other accessories. It also does not cover the parent unit's battery or other accessories.

How do you get your warranty in the USA?... To claim your warranty, you must contact Vtech customer service. You must provide proof of purchase and a description of the problem. You must provide proof of purchase and a description of the problem.

Please retain your original sales receipt as proof of purchase. The receipt is required to process any warranty claim. The receipt is required to process any warranty claim.

What must you return with the Product to get your warranty service?... You must return the baby unit and parent unit with the original purchase receipt and proof of purchase. You must return the baby unit and parent unit with the original purchase receipt and proof of purchase.

Other limitations... This warranty is void in certain countries and regions. It is void in countries where Vtech products are not sold. It is void in countries where Vtech products are not sold.

The warranty is void in certain countries and regions. It is void in countries where Vtech products are not sold. It is void in countries where Vtech products are not sold. It is void in countries where Vtech products are not sold.

This warranty is void in certain countries and regions. It is void in countries where Vtech products are not sold. It is void in countries where Vtech products are not sold. It is void in countries where Vtech products are not sold.

## FOR CETL COMPLIANCE ONLY

Avril de réparation... Ce produit est couvert par une garantie limitée de 12 mois à compter de la date d'achat. La garantie est nulle si le produit est utilisé d'une manière non prévue par le fabricant. La garantie est nulle si le produit est utilisé d'une manière non prévue par le fabricant.

Comment obtenir votre garantie en Amérique du Nord?... Pour bénéficier de votre garantie, vous devez contacter le service à la clientèle de Vtech. Vous devez fournir une preuve d'achat et une description du problème. Vous devez fournir une preuve d'achat et une description du problème.

Qu'est-ce qui n'est pas couvert par cette garantie limitée?... Cette garantie limitée ne couvre pas les dommages causés par un mauvais usage, des accidents ou des réparations non autorisées. Elle ne couvre pas les batteries ou d'autres accessoires du parent. Elle ne couvre pas les batteries ou d'autres accessoires du parent.

Comment obtenir votre garantie dans les États-Unis?... Pour faire valoir votre garantie, vous devez contacter le service à la clientèle de Vtech. Vous devez fournir une preuve d'achat et une description du problème. Vous devez fournir une preuve d'achat et une description du problème.

Conservez votre reçu de vente originale comme preuve d'achat. Le reçu est requis pour traiter toute réclamation de garantie. Le reçu est requis pour traiter toute réclamation de garantie.

Qu'est-ce que vous devez retourner avec le produit pour obtenir un service après-vente?... Vous devez retourner le produit et le parent avec le reçu d'achat original et une preuve d'achat. Vous devez retourner le produit et le parent avec le reçu d'achat original et une preuve d'achat.

D'autres restrictions... Cette garantie est nulle dans certains pays et régions. Elle est nulle dans les pays où les produits Vtech ne sont pas vendus. Elle est nulle dans les pays où les produits Vtech ne sont pas vendus.

Cette garantie est nulle dans certains pays et régions. Elle est nulle dans les pays où les produits Vtech ne sont pas vendus. Elle est nulle dans les pays où les produits Vtech ne sont pas vendus. Elle est nulle dans les pays où les produits Vtech ne sont pas vendus.

Cette garantie est nulle dans certains pays et régions. Elle est nulle dans les pays où les produits Vtech ne sont pas vendus. Elle est nulle dans les pays où les produits Vtech ne sont pas vendus. Elle est nulle dans les pays où les produits Vtech ne sont pas vendus.