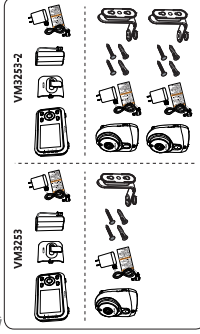
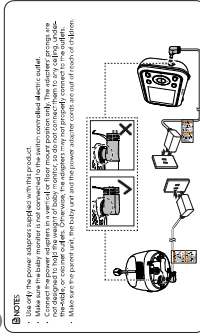




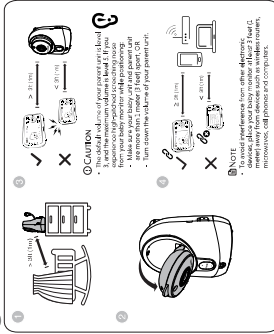
WHAT'S IN THE BOX



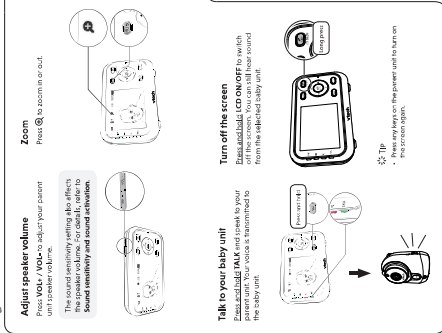
2 CONNECT THE BABY MONITOR



4 POSITIONING THE BABY MONITOR



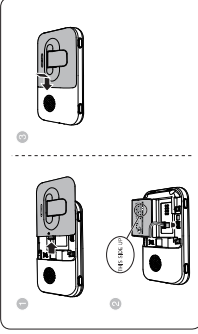
BASIC OPERATION - PARENT UNIT



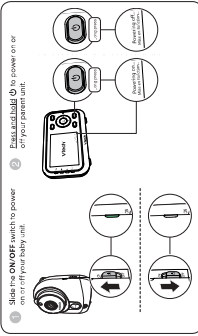
5 STATUS CHECK



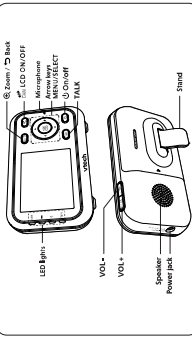
1 INSTALL THE BATTERY



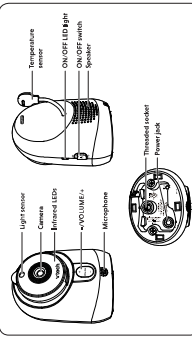
3 POWER ON OR OFF THE BABY MONITOR



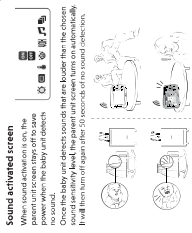
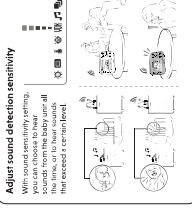
OVERVIEW - PARENT UNIT



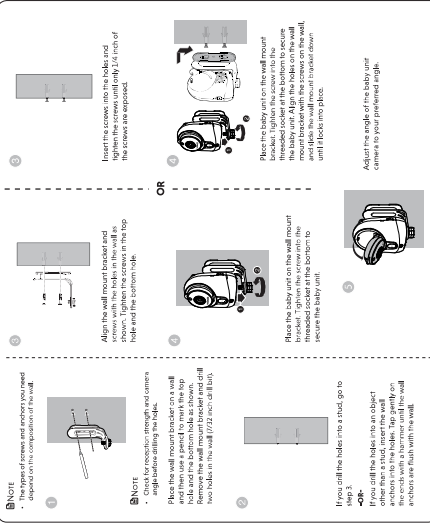
OVERVIEW - BABY UNIT



SOUND SENSITIVITY AND SOUND ACTIVATION



MOUNT THE BABY UNIT (OPTIONAL)



FOR VM253-2 ONLY

