

Go to www.vtechphones.com to register your product for enhanced warranty support and latest Vtech product news.

DECT 6.0 cordless telephone



vtech Quick start guide

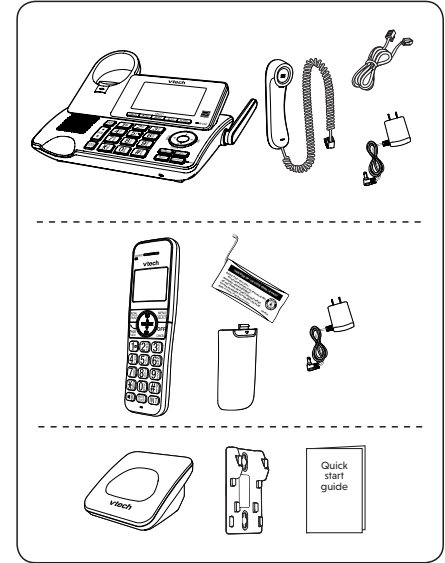
Technical specifications

Frequency control	Crystal controlled PLL synthesizer
Transmit frequency	Handset: 1921.536-1928.448 MHz Telephone base: 1921.536-1928.448 MHz
Channels	DECT channel 5
Normal operating range	Maximum power allowed by FCC and IC
Effective range	Actual operating range may vary according to environmental conditions at the time of use.
Power requirement	Handset: 2x AA-Ni-MH battery Telephone base: 6V DC @ 400mA
Memory	Phonebook: 50 memory locations Up to 30 digits and 15 characters Caller ID log: 30 memory locations Up to 24 digits and 15 characters
Call block	150 entries
TELEPHONE ENERGY STAR	TELEPHONE ENERGY STAR label indicating it meets the latest energy efficiency guidelines. Vtech Communications, Inc. and its suppliers assume no responsibility for any damage or resulting loss from the use of the user's manual. Vtech Communications, Inc. and its suppliers assume no responsibility for any loss or claim by third parties that may arise through the use of this product.
Disclaimer and Limitation of Liability	Vtech Communications, Inc. and its suppliers assume no responsibility for any damage or resulting loss from the use of the user's manual. Vtech Communications, Inc. and its suppliers assume no responsibility for any loss or claim by third parties that may arise through the use of this product.

© 2019 Vtech Communications, Inc. All rights reserved. 1170 CS5249-X, CGS-VL10
Address: 6005 Parkview Square Blvd - Ste 555 Tigard, OR 97223, United States
Phone: 1 (800) 595-9511 in the U.S. or 1 (800) 267-7777 in Canada
Document order number: 96-012953-010-100

- CS5249-2
- CS5249-3
- CS5249-4
- CS5249-5

What's in the box



1 Connect and activate

1 Connect the telephone base
If you subscribe to digital subscriber line (DSL) high-speed Internet service through your telephone line, make sure you connect a DSL filter (not included) to the telephone wall jack.

2 Connect the charger
Connect the charger to a power outlet and the handset.

3 Charge the battery
Place the handset in the charger. A 12-hour charging time is indicated.

4 Install the battery
Insert the battery into the handset, ensuring the correct orientation.

Display

Handset:	Telephone base:
Handset: [Battery icon] 10:15 AM 12/25	Base: [Battery icon] 10:15 AM 12/25
[Battery icon] The battery is low and needs charging.	[Mute icon] Telephone base ringer is off.
[Charging icon] The battery is charging.	[Mail icon] New voicemail received from your telephone service provider.
[Full battery icon] The battery is fully charged.	NEW [Mail icon] New caller ID log entries.
[Mute icon] Handset ringer is off.	[Mail icon] Number of new/old messages recorded.
NEW [Mail icon] New voicemail received from your telephone service provider.	
NEW [Mail icon] There are new caller ID log entries.	
ANS ON [Mail icon] Answering system is on.	
[Mail icon] Number of new/old messages recorded.	
ECO [Mail icon] The ECO mode activates automatically to reduce power consumption when the handset is within range of the telephone base.	

2 Setup

After you install your telephone or power returns following a power outage and battery depletion, the handset and telephone base will prompt you to set the date and time, and to configure the answering system through voice guide.

Date and time
Follow the steps below to set the date and time. For example, if the date is 25 December, 2019, and the time is 10:59 AM:

Date: MM/DD/YY → Date: 12/25/19 → Date: 12/25/19 → Time: 10:59 AM → Time: 10:59 AM

When the handset and telephone base prompt you to set the date and time:

- Enter the date
- Enter the time

Voice guide for answering system
After setting the date and time, the handset and telephone base will display **Voice guide to... and set up Ans sys?** alternatively. This feature assists you to do the basic setup of the answering system. You can follow the voice guide to record your own announcement, set the number of rings and the message alert tone.

When the handset prompts you to set up the answering system via voice guide:

- Press MENU
- Press SELECT

"Hello! This voice guide will assist you with the basic setup of your answering system"

Setup your answering system by inputting the designated numbers as instructed in the voice guide.

Basic operation

Make a call
Handset: [MENU] → [1-9*0] → Enter the phone number → [CALL]

Telephone base: [LIFT] → [SPEAKER]

Answer a call
Handset: [CALL] → [TALK FLASH] → Press any dialing keys to answer

Telephone base: [LIFT] → [SPEAKER]

End a call
Handset: [OFF] → [CANCEL]

Telephone base: [Place handset on telephone base] → [SPEAKER]

Volume
Handset: [VOL UP/DOWN] → [VOLUME]

Telephone base: [VOL UP/DOWN] → [VOLUME]

Phonebook

Phonebook
The phonebook can store up to 50 entries, which are shared by all handsets and the telephone base. Each entry may consist of a telephone number up to 30 digits, and a name up to 15 characters.

Add a phonebook entry
Handset: [MENU] → [ADD] → Enter name → Enter number → [MENU]

Review phonebook entries
Handset: [MENU] → [VIEW] → Browse the entries

Delete a phonebook entry
Handset: [MENU] → [VIEW] → Delete entry? → [DELETE]

Caller ID

Caller ID
If you subscribe to caller ID service, information about each caller appears after the first or second ring. The caller ID log stores up to 30 entries. Each entry has up to 24 digits for the phone number and 15 characters for the name.

Review caller ID log entries
Handset: [MENU] → [VIEW] → Browse the entries

Dial a caller ID entry
When your desired caller ID entry displays on the handset or telephone base screen:
Handset: [TALK FLASH] → [SPEAKER]

Delete a caller ID log entry
When your desired caller ID entry displays on the handset or telephone base screen:
Handset: [MUTE] → [DELETE]

Save a caller ID log entry to the phonebook
When your desired caller ID entry displays on the handset or telephone base screen:
Handset: [MENU] → [ADD] → Enter name → Enter number → [MENU]

GET HELP WITH THE ONLINE TOPICS

For operations and guides to help you using your telephone, and for latest information and supports, go and check the online help topics and online FAQs.

Use your smartphone or mobile device to access our online help.

- Go to <https://help.vtechphones.com/cs5249> OR
- Scan the QR code on the right. Launch the camera app or QR code scanner app on your smartphone or tablet. Hold the device's camera up to the QR code and frame it. Tap the notification to trigger the redirection of the online help.
- If the QR code is not clearly displayed, adjust your camera's focus by moving your device closer or further away until it is clear.

