

Go to www.vtechphones.com to register your product for enhanced warranty support and the latest Vtech product news.

VM5263 VM5263-2 Full Color Pan and Tilt Video Monitor



For more support information:



vtech® Quick start guide

©2017 Vtech Communications, Inc. All rights reserved.
Specifications are subject to change without notice.
This document is provided for informational purposes only. It is not intended to be used as a substitute for the product manual. The manufacturer assumes no responsibility for any damage or injury resulting from the use of the product. The manufacturer assumes no responsibility for any damage or injury resulting from the use of the product.

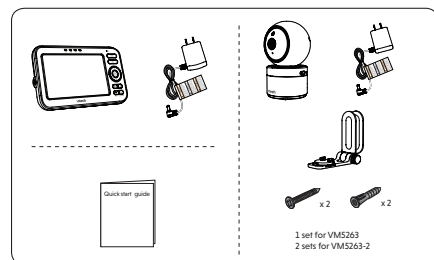
Model	VM5263	VM5263-2
Power requirements	Parent unit power adapter: Output: 5V DC @ 1A	Parent unit power adapter: Output: 5V DC @ 1A
Maximum receiver range	Maximum range allowed by FCC limit: Actual operating range may vary according to environmental conditions at the time of use.	Maximum range allowed by FCC limit: Actual operating range may vary according to environmental conditions at the time of use.
LCD	3" Color LCD (WQVGA 480x272 pixels)	3" Color LCD (WQVGA 480x272 pixels)
Channels	32	32
Transmit frequency	Parent unit: 2405 - 2425 MHz	Parent unit: 2405 - 2425 MHz
Frequency control	Crystal controlled PLL synthesizer	Crystal controlled PLL synthesizer

IMPORTANT SAFETY INSTRUCTIONS

- The applied nameplate is located at the bottom of the baby unit's base.
- When using your equipment, basic safety precautions should always be followed to reduce the risk of fire, electric shock and injury, including the following:
 - Follow all warnings and instructions marked on the product.
 - Adult safety is required.
 - CAUTION:** Do not install the baby unit at a height above 7 meters.
 - This product is intended as an aid. It is not a substitute for responsible and proper adult supervision and should not be used in such.
 - This product is not intended for use as a medical monitor.
 - Do not use this product near water. For example, do not use near a bath tub, wash bowl, kitchen sink, laundry tub or swimming pool, or in a wet basement or shower.
 - CAUTION:** Use only the battery provided. There may be a risk of explosion if a wrong type of battery is used for the parent unit. The battery cannot be subjected to light or low extreme temperature and low air pressure. All metallic during use, charge or transportation. Disposal of used battery should be in accordance with local regulations. Do not use the battery if you notice any swelling or leakage of flammable liquid or gas. Battery subjected to external low air pressure may result in an explosion or the leakage of flammable liquid or gas. Dispose of used battery according to the information in the **REC** seal.
 - Use only the adapters included with this product. Incorrect adapter polarity or voltage can seriously damage the product.

- Power adapter information:**
Input: 100-240V AC, 50/60 Hz
Output: 5V DC 1A
Model: VTDSLS03100
- Baby unit output: 5V DC 1A**
Vtech Communications, Inc.
Vtech Communications, Ltd.
Vtech Communications, Inc.
Vtech Communications, Ltd.
- Rechargeable battery information:**
Lithium battery: 3.6V 2000mAh
Charging: 1.5A
Model Number: BP763
- Precautions for users of implanted cardiac pacemakers:**
Cardiac pacemakers apply only to digital cordless devices: Wireless Technology Research, LLC (WTR), an independent research entity, had a multi-study evaluation of the interference between portable cordless devices and implanted cardiac pacemakers, supported by the U.S. Food and Drug Administration, WTR recommends to physicians that:
- Pacemaker patients**
- Should keep wireless devices at least six inches from the pacemaker.
 - Should NOT place wireless devices directly over the pacemaker, such as in a breast pocket, when it is turned ON.
 - If the evaluator did not identify any risk to bystanders with pacemakers from other persons using wireless devices.
- Electromagnetic fields (EMF):**
This Vtech product complies with all standards regarding electromagnetic fields (EMF) if handled properly and according to the instructions in this user's manual. The product is safe to be used based on scientific evidence available today.

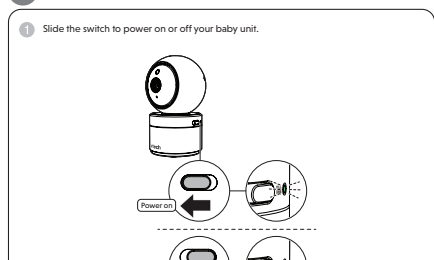
WHAT'S IN THE BOX



1 CONNECT THE BABY MONITOR

- NOTES**
- The rechargeable battery in the parent unit is built-in.
 - Use only the power adapters supplied with this product.
 - Make sure the baby monitor is not connected to a switch-controlled electric outlet.
 - Connect the power adapters in a vertical or floor mount position only. The adapters' prongs are not designed to hold the weight of the baby monitor, so do not connect them to any ceiling, under-the-table, or cabinet outlets. Otherwise, the adapters may not properly connect to the outlets.
 - Make sure the parent unit, the baby units and the power adapter cords are out of reach of children.
- Precautions for users of implanted cardiac pacemakers:**
Cardiac pacemakers apply only to digital cordless devices: Wireless Technology Research, LLC (WTR), an independent research entity, had a multi-study evaluation of the interference between portable cordless devices and implanted cardiac pacemakers, supported by the U.S. Food and Drug Administration, WTR recommends to physicians that:
- Pacemaker patients**
- Should keep wireless devices at least six inches from the pacemaker.
 - Should NOT place wireless devices directly over the pacemaker, such as in a breast pocket, when it is turned ON.
 - If the evaluator did not identify any risk to bystanders with pacemakers from other persons using wireless devices.
- Electromagnetic fields (EMF):**
This Vtech product complies with all standards regarding electromagnetic fields (EMF) if handled properly and according to the instructions in this user's manual. The product is safe to be used based on scientific evidence available today.

2 POWER ON OR OFF THE BABY MONITOR

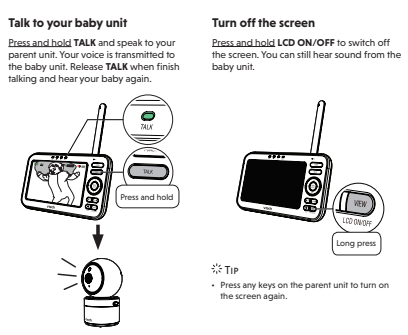


3 POSITIONING THE BABY MONITOR

- 1** Slide the switch to power on or off your baby unit.
- 2** Press and hold **POWER** to power on or off your parent unit.
- CAUTION:** The default volume of your parent unit is level 4, and the maximum volume is level 7. If you experience high-pitched screaming noise from your baby monitor while positioning:
- Make sure your baby unit and parent unit are more than 3 feet (1 meter) apart, OR
- Lower the volume of your parent unit.
- NOTE:** To avoid interference from other electronic devices, place your baby monitor at least 3 feet (1 meter) away from devices such as wireless routers, microwaves, cell phones and computers.
- STATUS CHECK**
- Once you power on both your baby unit and parent unit, your parent unit displays images from the baby unit, and the **LINK LED** light turns on.
- The **ON LED** light of baby unit turns on.

BASIC OPERATION - PARENT UNIT

- Adjust speaker volume**
Press **Vol** / **Vol** to adjust your parent unit speaker volume.
- Zoom**
Press **Q** to zoom in or out.
- Talk to your baby unit**
Press and hold **TALK** and speak to your parent unit. Your voice is transmitted to the baby unit. Release **TALK** when finish talking and hear your baby again.
- Turn off the screen**
Press and hold **LCD ON/OFF** to switch off the screen. You can still hear sound from the baby unit.



OVERVIEW - BABY UNIT

- Use the menu**
Press **MENU** to enter the menu, choose a menu item, or save a setting. You can use the parent unit for advanced settings or operations, such as to play or stop the baby unit lullaby, or to adjust the baby unit sound sensitivity.
- While in the menu:
- Press **Left** or **Right** to scroll among the menu options.
 - Press **MENU** to select an item, or to save a setting.
 - Press **Up** or **Down** to scroll among the sub-menu, or to adjust a setting.
 - Press **Left** to return to the previous menu options without changing the current setting.
 - Press **Q** / **EXIT** to return to live view.

- OVERVIEW - PARENT UNIT**
- LED lights
 - LCD display
 - Microphone
 - POWER
 - TALK
 - MENU/SELECT
 - Arrow keys
 - Volume
 - VIEW/LCD ON/OFF
 - Q/EXIT
 - Antenna
 - RESET
 - Stand
 - Power jack

PARENT UNIT ICONS

- Main menu icons**
- | Main menu | Sub-menu | Description |
|-----------------|---|--|
| Brightness | Adjust parent unit's LCD brightness. | |
| Camera settings | Baby unit speaker volume | Adjust the baby unit's speaker volume. |
| | Monitoring mode (For VM5263-2 only) | <ul style="list-style-type: none"> Single mode Split mode Patrol mode |
| Lullaby | Play/Stop lullaby | <ul style="list-style-type: none"> Select one of the soothing sounds, or white noise. Select one of the five melodies. Play all melodies. 60min 45min 30min 15min Set timer to stop playing the selected melody or soothing sound. |
| | Night light | <ul style="list-style-type: none"> Turn on/off night light Select one of the night light colors. Change to all seven colors in cycles. 60min 30min 15min Set timer to turn the night light off. OFF Select to set the night light to always on. AUTO Set to auto turn on the night light when baby unit detects sound. It will turn off after 15 minutes of no sound detection. You can set VOX sensitivity level to detect sounds that exceed certain levels. See Sound sensitivity and sound activation section. ON/OFF Turn on/off the adaptive night light feature. When this feature is on, the baby unit detects the ambient light. If the room is bright, the night light adjusts itself to be brighter; if the room is dim, the night light adjusts itself to be less bright. Temperature ON/OFF Turn on/off temperature alert tone. Set the parent unit to beep whenever the room temperature detected by the baby unit falls outside of the set temperature range. Set the minimum temperature. Set the maximum temperature. Set temperature display in Fahrenheit (°F) or Celsius (°C). |
| | Alert tones | <ul style="list-style-type: none"> Set the parent unit to beep when the battery is low. Set the parent unit to beep when the link between the parent unit and the baby unit is lost. Set the confirmation tone on or off when selecting an option in the menus. Set the parent unit to beep when the baby unit detects sounds while in Split mode (For VM5263-2 only). |
| | Sound activation - screen and audio | <ul style="list-style-type: none"> ON/OFF Turn on/off sound activation Set sound activation on or off. When it is on, and the baby unit detects no sound, the parent unit screen stays off to save power. Once a sound is detected, the parent unit screen and speaker turns on automatically, and you can see and hear your baby. The parent unit will then turn off again after 50 seconds of no sound detection. NOTE When the parent unit screen is off and it receives alerts, for example, link lost between parent unit and baby unit, or battery is low, the parent unit screen and speaker will turn on for 10 seconds. |
| | VOX (Voice Activated Alert) Sensitivity | <ul style="list-style-type: none"> You can set VOX sensitivity level to activate parent unit screen and sound when baby unit detects sounds that exceed certain levels. See Sound sensitivity and sound activation section. |

NEED HELP?

- For operations and guides to help you using your video monitor, and for latest information and supports, go and check the online help topics and online FAQs. Use your smartphone or mobile device to access our online help.
- Go to <https://help.vtechphones.com/vm5263> or <https://help.vtechphones.com/vm5263-2> OR
 - Scan the QR code on the right. Launch the camera app or QR code scanner app on your smartphone or tablet. Hold the device's camera up to the QR code and frame it. Tap the notification to trigger the redirection of the online help.
 - If the QR code is not clearly displayed, adjust your camera's focus by moving your device closer or further away until it is clear.
- You can also call our Customer Support at 1 (800) 595-9511 (in US) or 1 (800) 267-7377 (in Canada) for help.

