

Go to [www.vtechphones.com](http://www.vtechphones.com) to register your product for enhanced warranty support and the latest VTech product news.

VM5263  
VM5263-2

Full Color Pan and Tilt  
Video Monitor

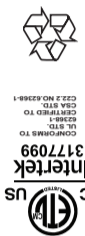


For more support information:



# vttech

## Quick start guide



The background noise sound file was created by Karabach, and is used under the Creative Commons license. The Chicken Night sound file was created by Mike Koenig, and is used under the Creative Commons license. The Stream Noise sound file was created by Caroline Ford, and is used under the Creative Commons license. The Rockground Noise sound file was created by Caroline Ford, and is used under the Creative Commons license. Credits:

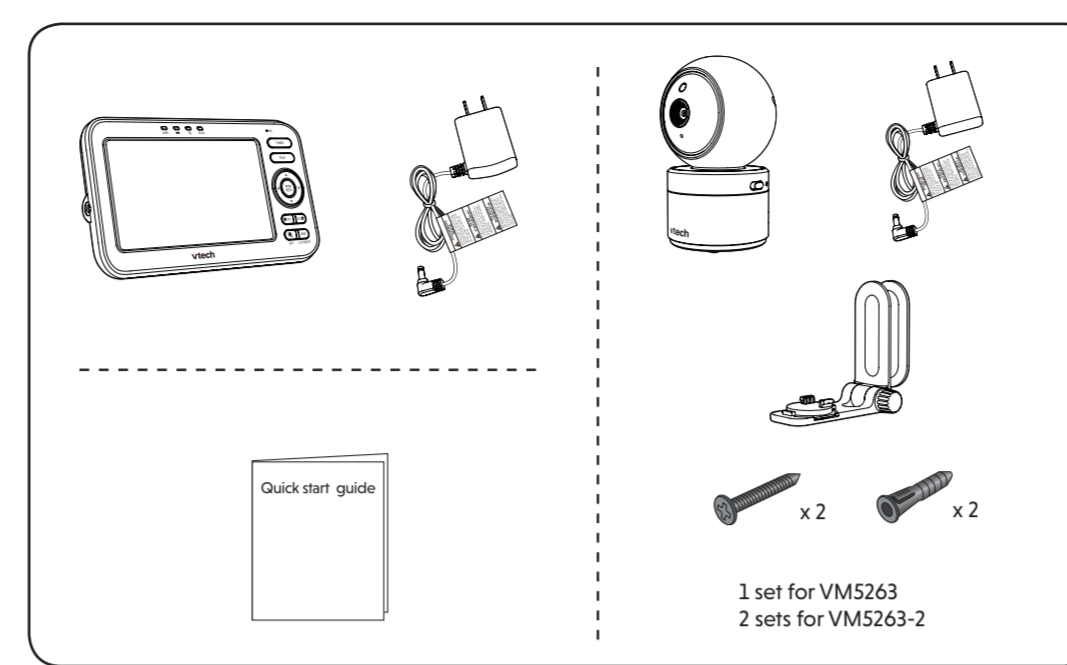
Power requirements	Nominal effective range	LCD	Channels	Transmit frequency	Frequency control
Parent unit: 3.8V Li-ion battery Baby unit power adapter: Output: 5V DC @ 1A	Maximum power allowed by FCC and IC. Actual operating range may vary according to environmental conditions at the time of use.	5" (Color LCD 560x480x272 pixel)	32	Parent unit: 2405 - 2475 MHz Baby unit: 2405 - 2475 MHz	Crystal controlled PLL synthesizer

## TECHNICAL SPECIFICATIONS

## IMPORTANT SAFETY INSTRUCTIONS

- The applied nameplate is located at the bottom of the baby unit's base.
- When using your equipment, basic safety precautions should always be followed to reduce the risk of fire, electric shock and injury, including the following:
- Follow all warnings and instructions marked on the product.
  - Adult setup is required.
  - CAUTION:** Do not install the baby unit at a height above 2 meters.
  - This product is intended as an aid. It is not a substitute for responsible and proper adult supervision and should not be used as such.
  - This product is not intended for use as a medical monitor.
  - Do not use this product near water. For example, do not use it next to a bath tub, wash bowl, kitchen sink, laundry tub or swimming pool, or in a wet basement or shower.
  - CAUTION:** Use only the battery provided. There may be a risk of explosion if a wrong type of battery is used for the parent unit. The battery cannot be subjected to high or low extreme temperature and low air pressure at high altitude during use, storage or transportation. Disposal of battery into fire or a hot oven, or mechanically crushing or cutting the battery can result in an explosion. Leaving the battery in an extremely high temperature surrounding environment can result in an explosion or the leakage of flammable liquid or gas. Battery subjected to extremely low air pressure may result in an explosion or the leakage of flammable liquid or gas. Dispose of used battery according to the information in **The RBRC Seal**.
  - Use only the adapters included with this product. Incorrect adapter polarity or voltage can seriously damage the product.
  - Power adapter information:**  
Parent unit output: 5V DC 1A  
VTech Telecommunications Ltd.  
Model: VT05EU505100  
Baby unit output: 5V DC 1A  
VTech Telecommunications Ltd.  
Model: VT05EU505100
  - Rechargeable battery information:**  
Li-ion battery, 3.8V 2100mAh  
Zhongshan Tianmao Battery Co., Ltd.  
Model Number: BT1763
  - The power adapters are intended to be correctly oriented in a vertical or floor mount position. The prongs are not designed to hold the plug in place if it is plugged into a ceiling, under-the-table or cabinet outlet.
  - For pluggable equipment, the socket-outlet shall be installed near the equipment and shall be easily accessible.
  - Unplug this product from the wall outlet before cleaning. Do not use liquid or aerosol cleaners. Use a damp cloth for cleaning.
  - Do not cut off the power adapters to replace them with other plugs, as this causes a hazardous situation.
  - Do not allow anything to rest on the power cords. Do not install this product where the cords may be walked on or crimped.
  - This product should be operated only from the type of power source indicated on the marking label. If you are not sure of the type of power supply in your home, consult your dealer or local power company.
  - Do not overload wall outlets or use an extension cord.
  - Do not place this product on an unstable table, shelf, stand or other unstable surfaces.
  - This product should not be placed in any area where proper ventilation is not provided. Slots and openings in the back or bottom of this product are provided for ventilation. To protect them from overheating, these openings must not be blocked by placing the product on a soft surface such as a bed, sofa or rug. This product should never be placed near or over a radiator or heat register.
  - Never push objects of any kind into this product through the slots because they may touch dangerous voltage points or create a short circuit. Never spill liquid of any kind on the product.
  - To reduce the risk of electric shock, do not disassemble this product, but take it to an authorized service facility. Opening or removing parts of the product other than specified access doors may expose you to dangerous voltages or other risks. Incorrect reassembly can cause electric shock when the product is subsequently used.
  - You should test the sound reception every time you turn on the units or move one of the components.
  - Periodically examine all components for damage.
  - There is a very low risk of privacy loss when using certain electronic devices, such as baby monitors, cordless telephones, etc. To protect your privacy, make sure the product has never been used before purchase, reset the baby monitor periodically by powering off and then powering on the units, and power off the baby monitor if you will not use it for some time.
  - Children should be supervised to ensure that they do not play with the product.
  - The product is not intended for use by persons (including children) with reduced physical, sensory or mental capabilities, or lack of experience and knowledge, unless they have been given supervision or instruction concerning use of the appliance by a person responsible for their safety.
- SAVE THESE INSTRUCTIONS**
- Cautions**
- Use and store the product at a temperature between 32°F and 104°F.
  - Do not expose the product to extreme cold, heat or direct sunlight. Do not put the product close to a heating source.
  - Batteries should not be exposed to excessive heat such as bright sunshine or fire.
  - Warning—Strangulation Hazard—**Children have STRANGLED in cords. Keep this cord out of the reach of children (more than 3 ft (0.9m) away). Do not remove this tag.
  - Never place the baby unit(s) inside the baby's crib or playpen. Never cover the baby unit(s) or parent unit with anything such as a towel or a blanket.
  - Other electronic products may cause interference with your baby monitor. Try installing your baby monitor as far away from these electronic devices as possible: wireless routers, radios, cellular telephones, intercoms, room monitors, televisions, personal computers, kitchen appliances and cordless telephones.
- Precautions for users of implanted cardiac pacemakers**  
Cardiac pacemakers (applies only to digital cordless devices): Wireless Technology Research, LLC (WTR), an independent research entity, led a multidisciplinary evaluation of the interference between portable wireless devices and implanted cardiac pacemakers. Supported by the U.S. Food and Drug Administration, WTR recommends to physicians that:
- Pacemaker patients**
- Should keep wireless devices at least six inches from the pacemaker.
  - Should NOT place wireless devices directly over the pacemaker, such as in a breast pocket, when it is turned ON.
- WTR's evaluation did not identify any risk to bystanders with pacemakers from other persons using wireless devices.
- Electromagnetic fields (EMF)**  
This VTech product complies with all standards regarding electromagnetic fields (EMF). If handled properly and according to the instructions in this user's manual, the product is safe to be used based on scientific evidence available today.

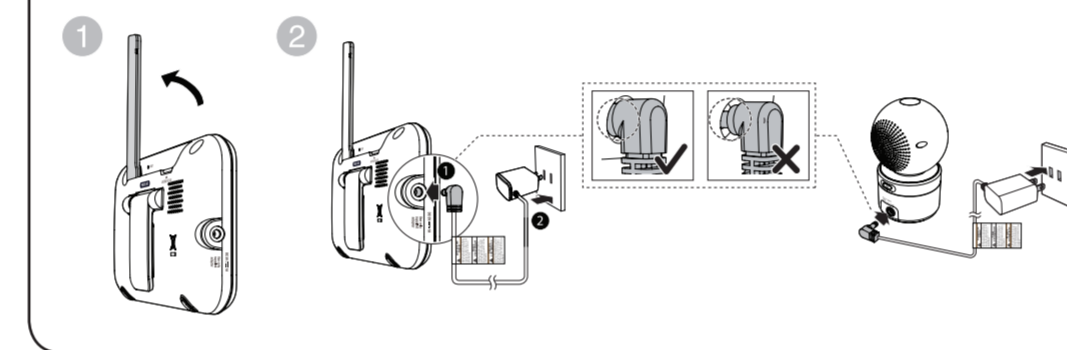
## WHAT'S IN THE BOX



## 1 CONNECT THE BABY MONITOR

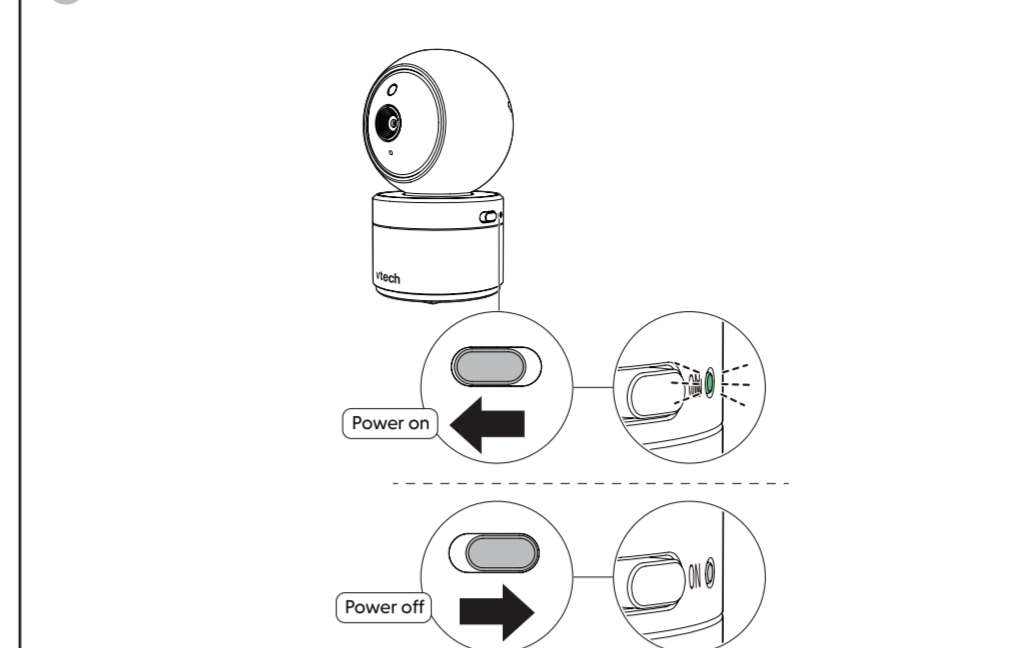
### NOTES

- The rechargeable battery in the parent unit is built-in.
- Use only the power adapters supplied with this product.
- Make sure the baby monitor is not connected to a switch-controlled electric outlet.
- Connect the power adapters in a vertical or floor mount position only. The adapters' prongs are not designed to hold the weight of baby monitor, so do not connect them to any ceiling, under-the-table, or cabinet outlets. Otherwise, the adapters may not properly connect to the outlets.
- Make sure the parent unit, the baby units and the power adapter cords are out of reach of children.

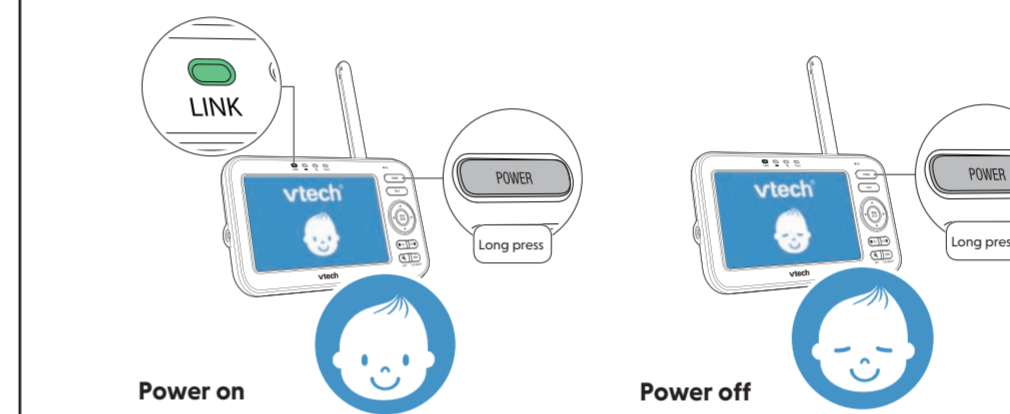


## 2 POWER ON OR OFF THE BABY MONITOR

1 Slide the switch to power on or off your baby unit.



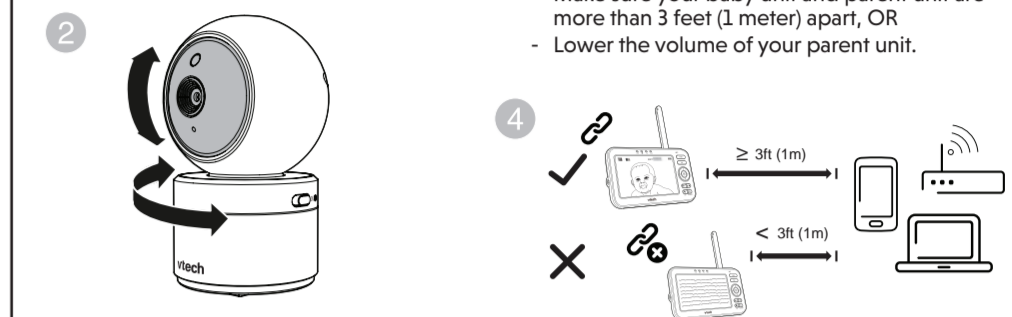
2 Press and hold **POWER** to power on or off your parent unit.



## 3 POSITIONING THE BABY MONITOR



- CAUTION**
- The default volume of your parent unit is level 4, and the maximum volume is level 7. If you experience high-pitched screeching noise from your baby monitor while positioning:
    - Make sure your baby unit and parent unit are more than 3 feet (1 meter) apart, OR
    - Lower the volume of your parent unit.



## 4 STATUS CHECK

Once you power on both your baby unit and parent unit, your parent unit displays image from the baby unit, and the **LINK** LED light turns on.

The **ON** LED light of baby unit turns on.

## BASIC OPERATION - PARENT UNIT

**Adjust speaker volume**  
Press **VOL** / **VOL** to adjust your parent unit speaker volume.

**Zoom**  
Press **Q** to zoom in or out.

**Use the menu**  
Press **MENU** / **SELECT** to enter the menu, choose a menu item, or save a setting. You can use the parent unit for advanced settings or operations, such as to play or stop the baby unit lullaby, or to adjust the baby unit sound sensitivity.

While in the menu:

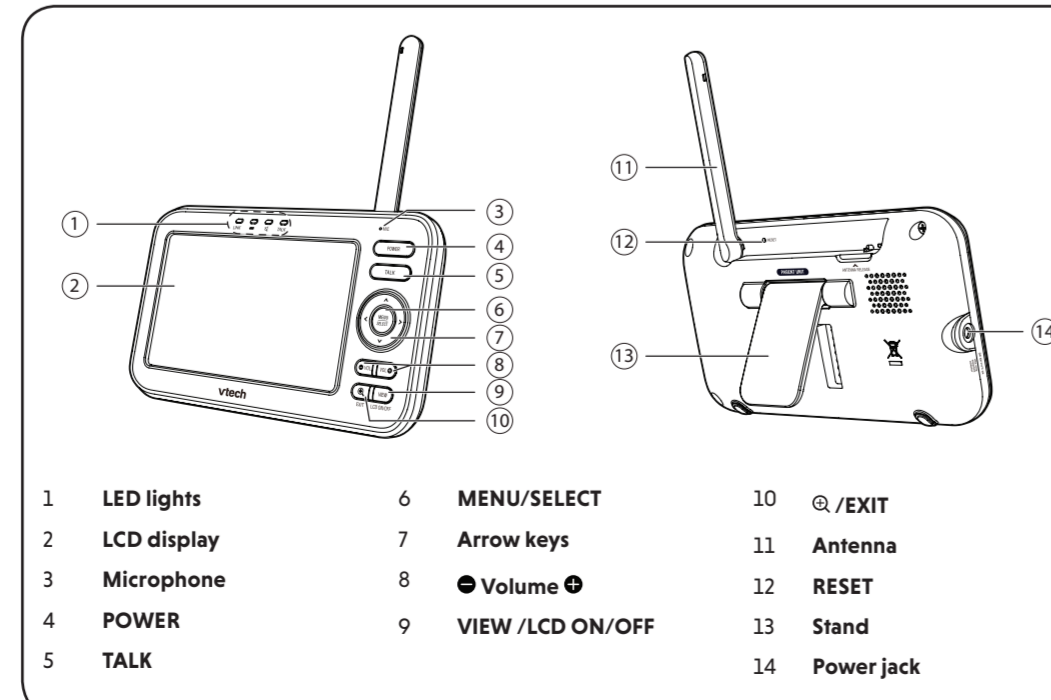
- Press **←** or **→** to scroll among the menu options.
- Press **MENU** / **SELECT** to select an item, or to save a setting.
- Press **▲** or **▼** to scroll among the sub-menus, or to adjust a setting.
- Press **←** to return to the previous menu options without changing the current setting.
- Press **Q** / **EXIT** to return to live video.

**Talk to your baby unit**  
Press and hold **TALK** and speak to your parent unit. Your voice is transmitted to the baby unit. Release **TALK** when finish talking and hear your baby again.

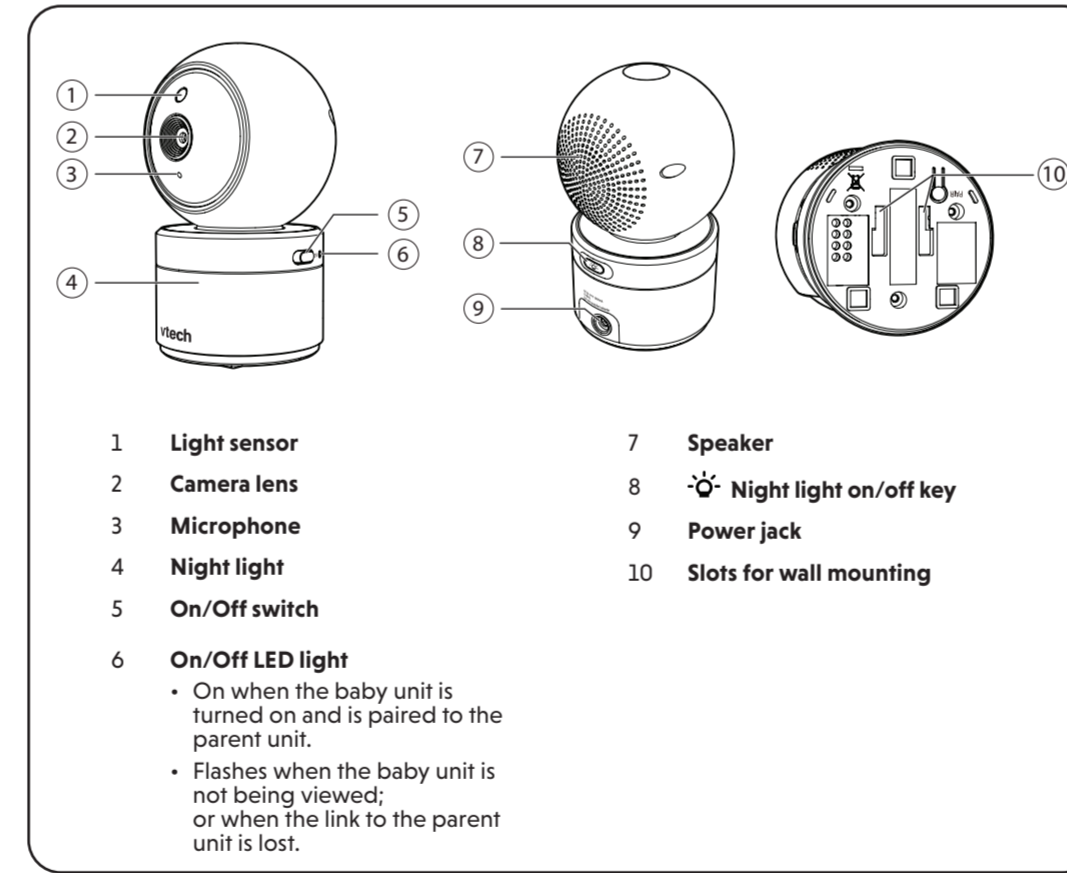
**Turn off the screen**  
Press and hold **LCD ON/OFF** to switch off the screen. You can still hear sound from the baby unit.

**TIP**  
Press any keys on the parent unit to turn on the screen again.

## OVERVIEW - PARENT UNIT



## OVERVIEW - BABY UNIT



## NEED HELP?

For operations and guides to help you using your video monitor, and for latest information and supports, go and check the online help topics and online FAQs.

Use your smartphone or mobile device to access our online help.

- Go to <https://help.vtechphones.com/vm5263> or <https://help.vtechphones.com/vm5263-2>
- Scan the QR code on the right. Launch the camera app or QR code scanner app on your smartphone or tablet. Hold the device's camera up to the QR code and frame it. Tap the notification to trigger the redirection of the online help.
- If the QR code is not clearly displayed, adjust your camera's focus by moving your device closer or further away until it is clear.

You can also call our Customer Support at 1 (800) 595-9511 [in US] or 1 (800) 267-7377 [in Canada] for help.

## PARENT UNIT ICONS

**Main menu icons**

Main menu	Sub-menu
<b>Brightness</b>	Adjust the parent unit's LCD brightness.
<b>Camera settings</b>	<ul style="list-style-type: none"> <li><b>Baby unit speaker volume</b> Adjust the baby unit's speaker volume.</li> <li><b>Monitoring mode (For VM5263-2 only)</b> <ul style="list-style-type: none"> <li>Single mode</li> <li>Split mode</li> <li>Patrol mode</li> </ul> </li> </ul>
<b>Lullaby</b>	<ul style="list-style-type: none"> <li><b>Play/Stop lullaby</b> Select one of the soothing sounds, or white noise.</li> <li>Select one of the five melodies.</li> <li>Play all melodies.</li> <li><b>60min 45min 30min 15min</b> Set timer to stop playing the selected melody or soothing sound.</li> </ul>
<b>Night light</b>	<ul style="list-style-type: none"> <li><b>ON/OFF</b> Turn on/off night light</li> <li>Select one of the night light colors.</li> <li>Change to all seven colors in cycles.</li> <li><b>60min 30min 15min</b> Set timer to turn the night light off.</li> <li><b>OFF</b> Select to set the night light to always on.</li> <li><b>AUTO</b> Set to auto turn on the night light when baby unit detects sound. It will turn off after 15 minutes of no sound detection. You can set <b>VOX sensitivity level</b> to detect sounds that exceed certain levels. See <b>Sound sensitivity and sound activation</b> section.</li> <li><b>ON/OFF</b> Turn on/off the adaptive night light feature. When this feature is on, the baby unit detects the ambient light. If the room is bright, the night light adjusts itself to be brighter; if the room is dim, the night light adjusts itself to be less bright.</li> </ul>
<b>Temperature</b>	<ul style="list-style-type: none"> <li><b>ON/OFF</b> Turn on/off temperature alert tone.</li> <li>Set the parent unit to beeps whenever the room temperature detected by the baby unit falls outside of the set temperature range.</li> <li>Set the minimum temperature.</li> <li>Set the maximum temperature.</li> <li>Set temperature display in Fahrenheit (°F) or Celsius (°C)</li> </ul>
<b>Alert tones</b>	<ul style="list-style-type: none"> <li>Set the parent unit to beep when the battery is low.</li> <li>Set the parent unit to beep when the link between the parent unit and the baby unit is lost.</li> <li>Set the confirmation tone on or off when selecting an option in the menus.</li> <li>Set the parent unit to beep when the baby unit detects sounds while in <b>Split mode (For VM5263-2 only)</b>.</li> </ul>
<b>Sound activation - screen and audio</b>	<ul style="list-style-type: none"> <li>Set sound activation on or off.</li> <li>When it is on, and the baby unit detects no sound, the parent unit screen stays off to save power. Once a sound is detected, the parent unit screen and speaker turns on automatically, and you can see and hear your baby. The parent unit will then turn off again after 50 seconds of no sound detection.</li> </ul>
<b>VOX (Voice Activated Alert) Sensitivity</b>	<ul style="list-style-type: none"> <li>You can set VOX sensitivity level to activate parent unit screen and sound when baby unit detects sounds that exceed certain levels. See <b>Sound sensitivity and sound activation</b> section.</li> </ul>

