

Go to www.vtechphones.com to register your product for enhanced warranty support and the latest VTech product news.

VM350
VM350-2

Full Color Video Monitor



For more support information



vttech®

Quick start guide

© 2020 VTech Communications, Inc. All rights reserved.
17120_VM350-X_056_USA
Speakers are subject to change without notice.
The Heart Beat sound file was created by Zarabeden, and is used under the Creative Commons license.
The Cuckles At Night sound file was created by Mike Koening, and is used under the Creative Commons license.
The Stream Noise sound file was created by Caroline Ford, and is used under the Creative Commons license.
The Background Noise sound file was created by Caroline Ford, and is used under the Creative Commons license.
Credits:

Power requirements	Parent unit power adapter Output: 5V DC @ 1A Parent unit battery: 3.8V 2100mAh Li-ion battery
Nominal effective range	Maximum power allowed by FCC and IC: Actual operating range may vary according to environmental conditions at the time of use. (5' Color LCD) (5' WVG6A 480x272 pixel)
Channels	32
Transmit frequency	Parent unit: 2405 - 2475 MHz Baby unit: 2405 - 2475 MHz
Frequency control	Crystal controlled PLL synthesizer

TECHNICAL SPECIFICATIONS

IMPORTANT SAFETY INSTRUCTIONS

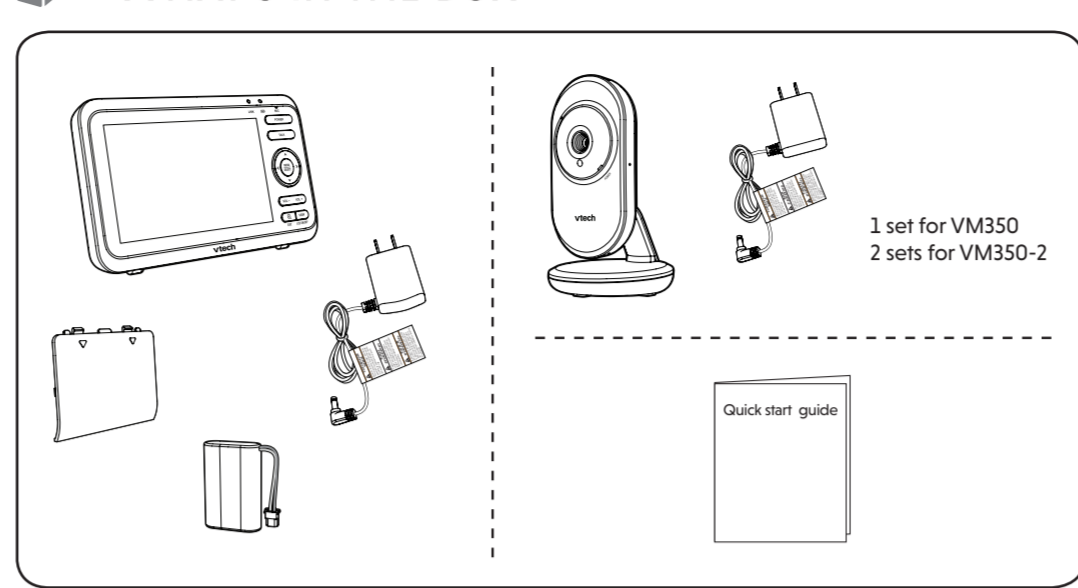
- The applied nameplate is located at the bottom of the baby unit's base.
- When using your equipment, basic safety precautions should always be followed to reduce the risk of fire, electric shock and injury, including the following:
- Follow all warnings and instructions marked on the product.
 - Adult setup is required.
 - CAUTION:** Do not install the baby unit at a height above 2 meters.
 - This product is not a substitute for adult supervision of the infant. Supervising the infant is the parent's or caregiver's responsibility. This product could cease operating, and therefore you should not assume it will continue working properly for any given period of time. Further, this is not a medical device and should not be used as such. This product is intended to assist you in supervising your baby.
 - Do not use this product near water. For example, do not use it next to a bath tub, wash bowl, kitchen sink, laundry tub or swimming pool, or in a wet basement or shower.
 - CAUTION:** Use only the batteries provided. There may be a risk of explosion if a wrong type of battery is used for the parent unit. The batteries cannot be subjected to high or low extreme temperature and low air pressure at high altitude during use, storage or transportation. Disposal of batteries into fire or a hot oven, or mechanically crushing or cutting the batteries can result in an explosion. Leaving the batteries in an extremely high temperature surrounding environment can result in an explosion or the leakage of flammable liquid of gas. Batteries subjected to extremely low air pressure may result in an explosion or the leakage of flammable liquid or gas. Dispose of used battery according to the information in The RBRC seal.
 - Use only the adapters included with this product. Incorrect adapter polarity or voltage can seriously damage the product.
 - Use only adaptors and batteries listed below.
- Power adapter information:**
VTech Telecommunications Ltd.
Model: VT05EU50505040 (Baby unit); VT05EU50505050 (Parent unit)
- Rechargeable batteries information:**
ZHONGSHAN TIANMAO BATTERY CO., LTD
3.8V 2100mAh Li-ion Battery (Model: 19300)
- The power adapters are intended to be correctly oriented in a vertical or floor mount position. The prongs are not designed to hold the plug in place if it is plugged into a ceiling, under-the-table or cabinet outlet.
 - For pluggable equipment, the socket-outlet shall be installed near the equipment and shall be easily accessible.
 - Unplug this product from the wall outlet before cleaning. Do not use liquid or aerosol cleaners. Use a damp cloth for cleaning.
 - Unplug the power cords before replacing batteries.
 - Do not cut off the power adapters to replace them with other plugs, as this causes a hazardous situation.
 - Do not allow anything to rest on the power cords. Do not install this product where the cords may be walked on or crimped.
 - This product should be operated only from the type of power source indicated on the marking label. If you are not sure of the type of power supply in your home, consult your dealer or local power company.
 - Do not overload wall outlets or use an extension cord.
 - Do not place this product on an unstable table, shelf, stand or other unstable surfaces.
 - This product should not be placed in any area where proper ventilation is not provided. Slots and openings in the back or bottom of this product are provided for ventilation. To protect them from overheating, these openings must not be blocked

- Never push objects of any kind into this product through the slots because they may touch dangerous voltage points or create a short circuit. Never spill liquid of any kind on the product.
- To reduce the risk of electric shock, do not disassemble this product, but take it to an authorized service facility. Opening or removing parts of the product other than specified access doors may expose you to dangerous voltages or other risks. Incorrect reassembly can cause electric shock when the product is subsequently used.
- You should test the sound reception every time you turn on the units or move one of the components.
- Periodically examine all components for damage.
- There is a very low risk of privacy loss when using certain electronic devices, such as baby monitors, cordless telephones, etc. To protect your privacy, make sure the product has never been used before purchase, reset the baby monitor periodically by powering off and then powering on the units, and power off the baby monitor if you will not use it for some time.
- Children should be supervised to ensure that they do not play with the product.
- The product is not intended for use by persons (including children) with reduced physical, sensory or mental capabilities, or lack of experience and knowledge, unless they have been given supervision or instruction concerning use of the appliance by a person responsible for their safety.

SAVE THESE INSTRUCTIONS

- SAFETY WARNINGS**
- Use and store the product at a temperature between 32°F and 104°F.
 - Do not expose the product to extreme cold, heat or direct sunlight. Do not put the product close to a heating source.
 - Batteries should not be exposed to excessive heat such as bright sunshine or fire.
 - Warning—Strangulation Hazard—Children** have STRANGLING in cords. Keep this cord out of the reach of children (more than 3 ft (0.9 m) away). Do not remove this tag.
 - Never place the baby unit inside the baby's crib or playpen. Never cover the baby unit or parent unit with anything such as a towel or a blanket.
 - Other electronic products may cause interference with your baby monitor. Try installing your baby monitor as far away from these electronic devices as possible: wireless routers, radios, cellular telephones, intercoms, room monitors, televisions, personal computers, kitchen appliances and cordless telephones.
- Precautions for users of implanted cardiac pacemakers**
Cardiac pacemakers (applies only to digital cordless devices): Wireless Technology Research, LLC (WTR), an independent research entity, led a multidisciplinary evaluation of the interference between portable wireless devices and implanted cardiac pacemakers. Supported by the U.S. Food and Drug Administration, WTR recommends to physicians that:
- Should keep wireless devices at least six inches from the pacemaker.
 - Should NOT place wireless devices directly over the pacemaker, such as in a breast pocket, when it is turned ON. WTR's evaluation did not identify any risk to bystanders with pacemakers from other persons using wireless devices.
- Electromagnetic fields (EMF)**
This VTech product complies with all standards regarding electromagnetic fields (EMF). If handled properly and according to the instructions in this user's manual, the product is safe to be used based on scientific evidence available today.

WHAT'S IN THE BOX



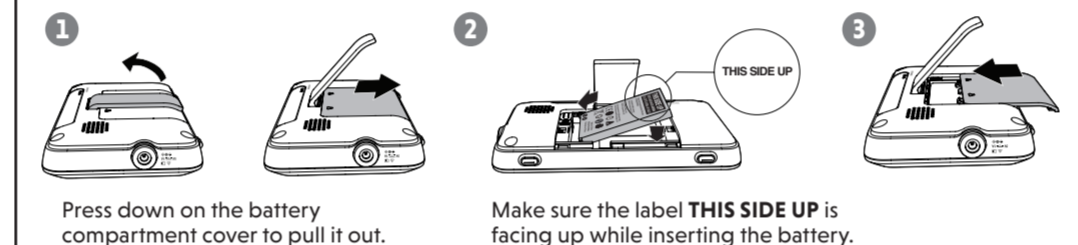
1 CONNECT THE BABY MONITOR

Install the battery

The parent unit runs on rechargeable battery or AC power. To continuously monitor your baby, make sure you use both battery and AC power at the same time. With the battery alone, the parent unit can cordlessly run for a short time only.

NOTES

- Use only the battery supplied with this product.
- If the parent unit will not be used for a long time, disconnect and remove the battery to prevent possible leakage.



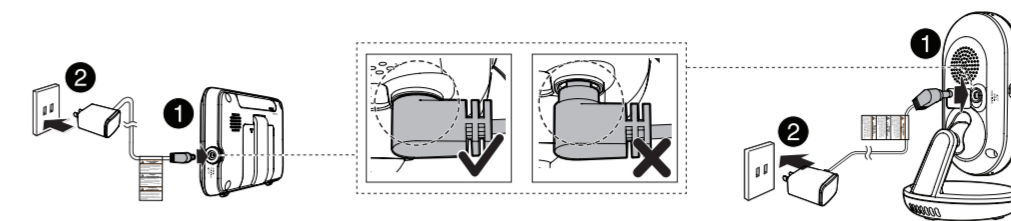
Replace the battery

To replace the battery, press down on the battery compartment cover and pull it out, then follow the steps above to install the battery.

Connect the baby monitor

NOTES

- Use only the power adapters supplied with this product.
- Make sure the baby monitor is not connected to the switch controlled electric outlet.
- Connect the power adapters in a vertical or floor mount position only. The adapters' prongs are not designed to hold the weight of baby monitor, so do not connect them to any ceiling, under-the-table, or cabinet outlets. Otherwise, the adapters may not properly connect to the outlets.
- Make sure the parent unit, the baby unit and the power adapter cords are out of reach of children.



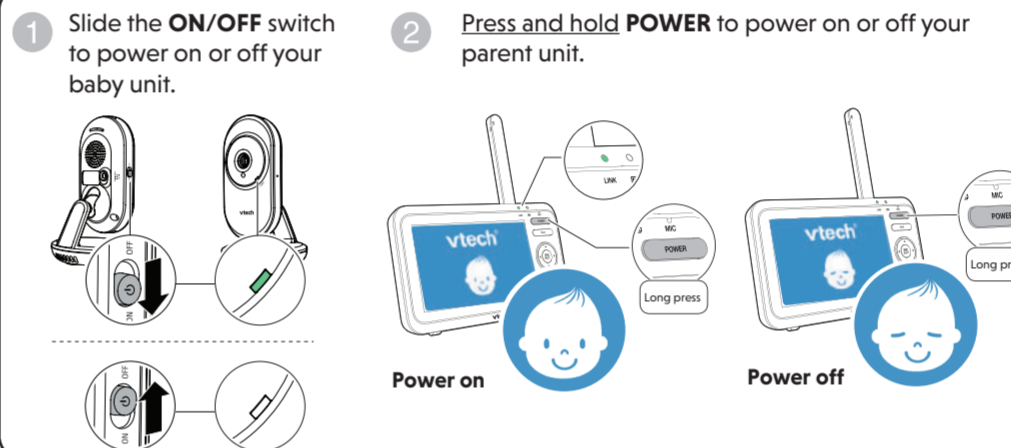
Charge the parent unit battery

When you have connected and turned on the parent unit, the battery will be charged automatically.

NOTES

- Before using the baby monitor for the first time, charge the parent unit battery for 12 hours. When the parent unit battery is fully charged, the battery icon becomes solid.
- It takes longer to charge the battery when the parent unit is turned on. To shorten the charging time, turn the parent unit off while charging.
- The standby time varies depending on the sensitivity level you set, your actual use and the age of the battery.

2 POWER ON OR OFF THE BABY MONITOR



3 POSITIONING THE BABY MONITOR

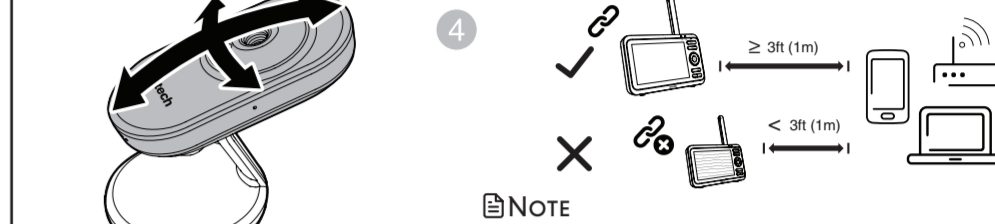
CAUTION

- Keep the baby unit out of the reach of your baby. Never place or mount the baby unit inside the baby's crib or playpen.



CAUTION

- The default volume of your parent unit is level 4, and the maximum volume is level 7. If you experience high-pitched screaming noise from your baby monitor while positioning:
 - Make sure your baby unit and parent unit are more than 3 feet (1 meter) apart, OR
 - Lower the volume of your parent unit.



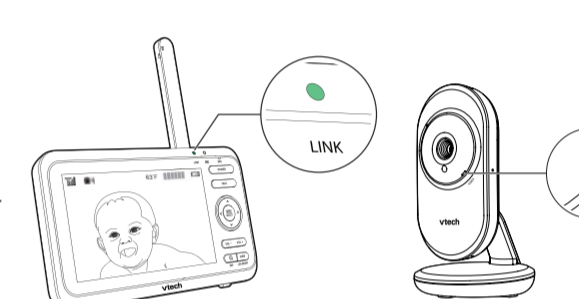
NOTE

- To avoid interference from other electronic devices, place your baby monitor at least 3 feet (1 meter) away from devices such as wireless routers, microwaves, cell phones and computers.

4 STATUS CHECK

Once you power on both your baby unit and parent unit, your parent unit displays image from the baby unit, and the **LINK LED** light turns on.

The **POWER LED** light of baby unit turns on.



BASIC OPERATION - PARENT UNIT

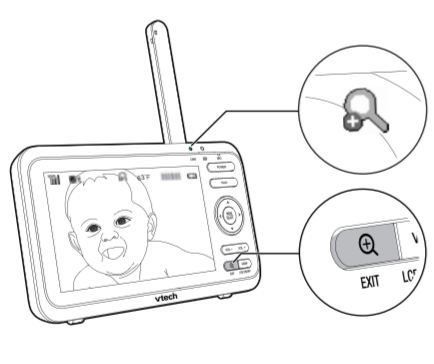
Adjust speaker volume

Press **VOL+** / **VOL-** to adjust your parent unit speaker volume.



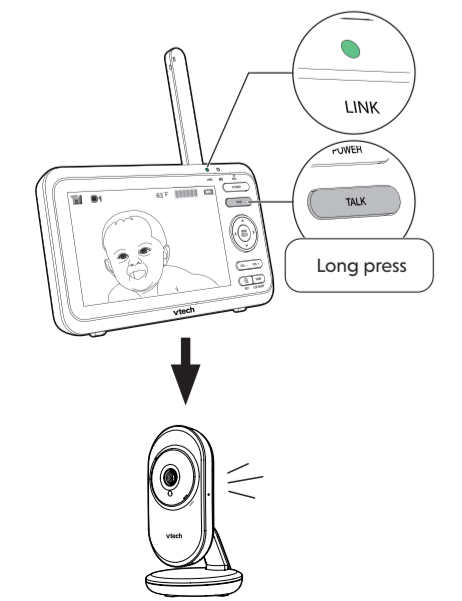
Zoom

Press **Q** to zoom in or out.



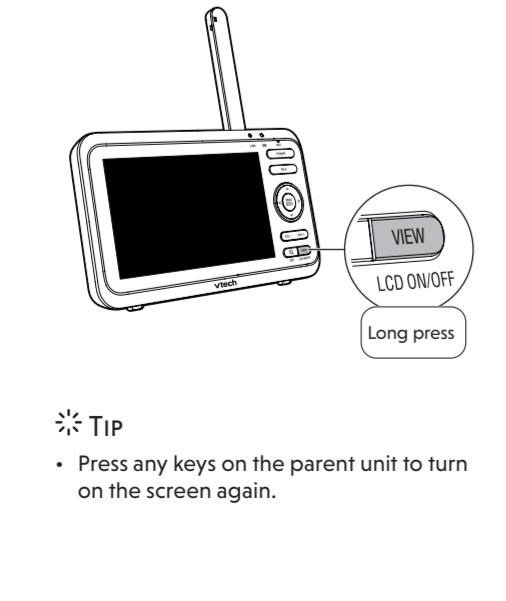
Talk to your baby unit

Press and hold **TALK** and speak to your parent unit. Your voice is transmitted to the baby unit. Release **TALK** when finish talking and hear your baby again.



Turn off the screen

Press and hold **LCD ON/OFF** to switch off the screen. You can still hear sound from the baby unit.



TIP

- Press any keys on the parent unit to turn on the screen again.

Use the menu

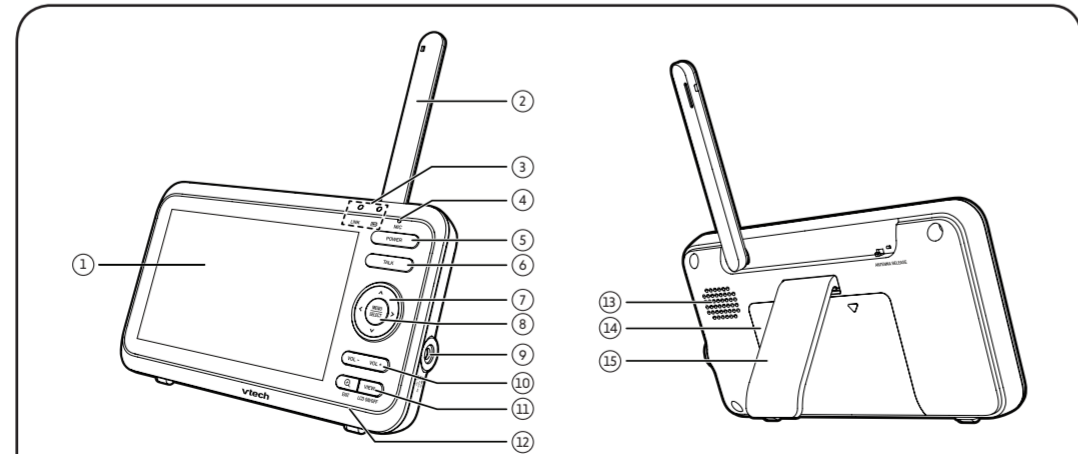
Press **MENU/SELECT** to enter the menu, choose a menu item, or save a setting. You can use the parent unit for advanced settings or operations, such as to play or stop the baby unit lullaby, or to adjust the baby unit sound sensitivity.

While in the menu:

- Press **<** or **>** to scroll among the menu options.
- Press **MENU/SELECT** to select an item, or to save a setting.
- Press **▲** or **▼** to scroll among the sub-menus, or to adjust a setting.
- Press **<** to return to the previous menu options without changing the current setting.
- Press **Q/EXIT** to return to live video.

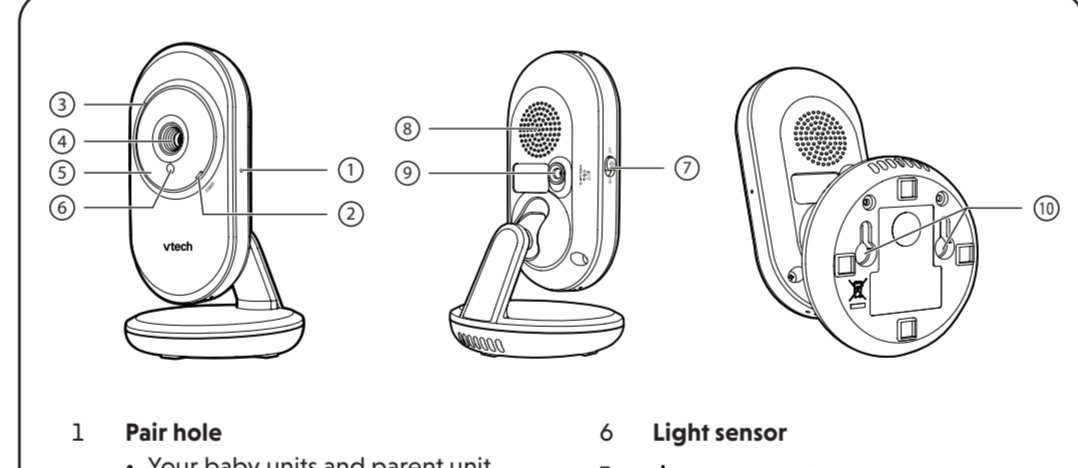


OVERVIEW - PARENT UNIT



- | | | |
|---------------|----------------------|------------------------------|
| 1 LCD display | 7 Arrow keys | 13 Speaker |
| 2 Antenna | 8 MENU/SELECT | 14 Battery compartment cover |
| 3 LED lights | 9 Power jack | 15 Stand |
| 4 Microphone | 10 VOL - / VOL + | |
| 5 POWER | 11 VIEW / LCD ON/OFF | |
| 6 TALK | 12 Q / EXIT | |

OVERVIEW - BABY UNIT



- | | |
|--|--|
| 1 Pair hole | 6 Light sensor |
| • Your baby units and parent unit provided are already paired. | 7 ON/OFF switch |
| 2 POWER LED light | • Slide to turn on or off the baby unit. |
| • On when the baby unit is turned on and is paired to the parent unit. | 8 Speaker |
| • Flashes when the baby unit is not being viewed; or when the link to the parent unit is lost. | 9 Power jack |
| 3 Microphone | 10 Wall mount holes |
| 4 Camera | |
| 5 Infrared LEDs | |

NEED HELP?

For operations and guides to help you using your video monitor, and for latest information and supports, go and check the online help topics and online FAQs.

Use your smartphone or mobile device to access our online help.

- Go to <https://help.vtechphones.com/vm350> or <https://help.vtechphones.com/vm350-2>; OR
- Scan the QR code on the right. Launch the camera app or QR code scanner app on your smartphone or tablet. Hold the device's camera up to the QR code and frame it. Tap the notification to trigger the redirection of the online help.
- If the QR code is not clearly displayed, adjust your camera's focus by moving your device closer or further away until it is clear.

You can also call our Customer Support at 1 (800) 595-9511 [in US] or 1 (800) 267-7377 [in Canada] for help.



PARENT UNIT ICONS

Main menu icons

Main menu	Sub-menu
Brightness	Adjust the parent unit's LCD brightness.
Camera settings	Baby unit speaker volume Adjust the baby unit's speaker volume. Monitoring mode (For VM350-2 only) • Single mode • Split mode • Patrol mode
Lullaby	Play/Stop lullaby • Select one of the soothing sounds, or white noise. • Select one of the five melodies. • Play all melodies.
	60min 45min 30min 15min • Set timer to stop playing the selected melody or soothing sound.

Main menu	Sub-menu
Alert tones	• Set the parent unit to beep when the battery is low. • Set the parent unit to beep when the link between the parent unit and the baby unit is lost. • Set the confirmation tone on or off when selecting an option in the menus. • Set the parent unit to beep when the baby unit detects sounds while in Split mode (For VM350-2 only).
ON/OFF	• Turn on/off the alert vibration.
Temperature	ON/OFF • Turn on/off temperature alert tone. • Set the parent unit to beeps whenever the room temperature detected by the baby unit falls outside of the set temperature range. • Set the minimum temperature. • Set the maximum temperature. • Set temperature display in Fahrenheit (°F) or Celsius (°C)

Main menu	Sub-menu
Sound activation - screen and audio	ON/OFF Turn on/off sound activation • Set sound activation on or off. • When it is on, and the baby unit detects no sound, the parent unit screen stays off to save power. Once a sound is detected, the parent unit screen and speaker turns on automatically, and you can see and hear your baby. The parent unit will then turn off again after 50 seconds of no sound detection.
VOX (Voice Activated Alert) Sensitivity	• You can set VOX sensitivity level to activate parent unit screen and sound when baby unit detects sounds that exceed certain levels. See Sound sensitivity and sound activation section.

PARENT UNIT ICONS (CONT'D)

Status icons

Connection status

- Strong signal strength.
- Moderate signal strength.
- Low signal strength.
- Weak signal strength.

Split mode
(*For VM350-2 only)

Patrol mode
(*For VM350-2 only)

Current view status

- The baby unit number that is being viewed when in:
 - Single CAM mode.
 - Patrol mode (*For VM350-2 only).
 - Split mode (*For VM350-2 only).

Night vision - On

Zoom - On

Lullaby - On

Real-time temperature

- Real-time temperature detected by the baby unit in Fahrenheit (°F) or Celsius (°C) (e.g. 57°F or 14°C).

Temperature alert tone - On

9-level sound indicator

- Indicates low sound level detected by the baby unit.
- Indicates moderate sound level detected by the baby unit.
- Indicates high sound level detected by the baby unit.

Status icons

Mute alert

- Displays when the parent unit speaker volume is set to off.
- Displays when the parent unit is talking to the baby unit.

Battery status

- animates when the battery is charging.
- battery is fully charged.
- battery is low and needs charging.

Alert icons

- Displays when parent unit's battery is low and needs charging.
- Displays when connection between parent unit and baby unit is lost.
- Displays when sound is detected at a baby unit when in Split view. (For VM350-2 only)
- Baby unit detects temperature reaches or exceeds the set maximum.
- Baby unit detects temperature is at or is lower than the set minimum.

SOUND SENSITIVITY AND SOUND ACTIVATION

Adjust sound detection sensitivity

You can turn on **Sound activation** and adjust the **VOX sensitivity** to detect sounds and turn on the parent unit while its screen is switched off or dimmed.

When the baby unit detects sounds that exceed certain levels, the parent unit screen will turn on and the baby unit starts transmitting the sounds to the parent unit, and you can see and hear your baby.

If you turn off **Sound activation**, you will hear sounds from the baby unit all the time, even when the parent unit screen is switched off.

If you have turned on sound alert, the parent unit beeps when the baby unit detect sounds while in **Split mode** (*For VM350-2 only).

VOX SENSITIVITY LEVEL	Level 5 (Highest)	Level 4 (High)	Level 3 (Medium)	Level 2 (Low)	Level 1 (Lowest)
DESCRIPTION	(Default setting) The parent unit screen and speaker turn on for very small sounds, including background noises from your baby's room.	The parent unit screen and speaker turn on for soft babbling and louder sounds from your baby. The parent unit remains quiet when your baby sleeps soundly.	The parent unit screen and speaker turns on for loud babbling and louder sounds from your baby. The parent unit remains quiet when your baby makes soft sounds.	The parent unit screen and speaker turn on for crying and louder sounds from your baby. The parent unit remains quiet when your baby makes soft sounds.	The parent unit screen and speaker turn on for loud crying or screaming sounds from your baby. The parent unit remains quiet when your baby makes soft sounds.

Sound activated screen and audio

When **Sound activation** is on, the parent unit screen stays off to save power when the baby unit detects no sound.

Once the baby unit detects sounds that are louder than the chosen sound sensitivity level, the parent unit screen and speaker turn on automatically. The parent unit will then turn off again after 50 seconds of no sound detection.

NOTE

- If you have muted the parent unit speaker, only the parent unit screen will turn on when a sound is detected.

NIGHT VISION

The baby unit has infrared LEDs that allow you to see your baby clearly at night or in a dark room. When the baby unit being viewed detects low light levels, the infrared LEDs are switched on automatically. The images from the baby unit are in black and white, and appears on the screen.

NOTES

- It is normal if you see a short white glare on your parent unit screen as the baby unit is adapting to the dark environment.
- When the infrared LEDs are on, the images are in black and white. This is normal.

TIP

- Depending on the surroundings and other interfering factors, like lightings, objects, colors and backgrounds, the video quality may vary. Adjust the baby unit's angle or place the baby unit at a higher level to prevent glare and blurry display.

DIM MODE

The parent unit display will dim to conserve energy after 10 minutes of inactivity, in which there is neither key pressed nor alert received from the baby unit.

10 min inactivity

Press any buttons

FOR VM350-2 ONLY

Status check - Two baby units

If you are viewing baby unit 1, the **POWER LED** light of baby unit 1 turns on. As baby unit 2 is not being viewed, its **POWER LED** light flashes.

NOTE

- If you power on only one baby unit, you may see the parent unit displaying and then the **LINK LED** light flashing.
- Press **VIEW** in **Single CAM** or **Patrol** mode to switch to the baby unit you have powered on.

Change different views - Single CAM

In **Single CAM** or **Patrol** mode, press **VIEW** to switch between the image of baby units 1 and 2.

Change different views - Patrol

Select **Patrol** as your monitoring mode to alternately view the image from baby units 1 and 2 every 10 seconds.

Change different views - Split

Select **Split** as your monitoring mode to view the images from both baby units at once.

MOUNT THE BABY UNIT ON DRY WALL (OPTIONAL)

Items to purchase

You will need to purchase the following items separately to mount your baby unit:

- 2 screws
- 2 anchors

NOTE

- The types of screws and anchors you need depend on the composition of the wall.

1 Drill two holes in the wall. If you drill the holes into a stud, go to step 3.

2 -OR- If you drill the holes into an object other than a stud, insert the wall anchors into the holes. Tap gently on the ends with a hammer until the wall anchors are flush with the wall.

3 Insert the screws into the holes and tighten the screws until only 1/4 inch of the screws are exposed.

4 Use a pencil to mark two holes in parallel. Make sure they are the same distance apart as the wall mount holes on the baby unit.

THE RBRC SEAL

The RBRC seal on the Ni-MH battery indicates that VTech Communications, Inc. is voluntarily participating in an industry program to collect and recycle these batteries at the end of their useful lives, when taken out of service within the United States and Canada.

The program provides a convenient alternative to placing used Ni-MH batteries into the trash or municipal waste, which may be illegal in your area.

VTech's participation makes it easy for you to drop off the spent battery at local retailers participating in the program or authorized VTech product service centers. Please call 1 (800) 8 BATTERY for information on Ni-MH battery recycling and disposal bans/restrictions in your area. VTech's involvement in this program is part of its commitment to protecting our environment and conserving natural resources.

The RBRC seal and 1-800-8-BATTERY® are registered trademarks of Cal2recycle, Inc.

FCC and IC REGULATIONS

FCC Part 15

This equipment has been tested and found to comply with the requirements for a Class B digital device under Part 15 of the Federal Communications Commission (FCC) rules. These requirements are intended to provide reasonable protection against harmful interference in a residential installation. This equipment generates, uses and can radiate radio frequency energy and, if not installed and used in accordance with the instructions, may cause harmful interference to radio communications. However, there is no guarantee that interference will not occur in a particular installation. If this equipment does cause harmful interference to radio or television reception, which can be determined by turning the equipment off and on, the user is encouraged to try to correct the interference by one or more of the following measures:

- Reorient or relocate the receiving antenna.
- Increase the separation between the equipment and receiver.
- Connect the equipment into an outlet on a circuit different from that to which the receiver is connected.
- Consult the dealer or an experienced radio/TV technician for help.

WARNING: Changes or modifications to this equipment not expressly approved by the party responsible for compliance could void the user's authority to operate the equipment.

This device complies with Part 15 of the FCC rules. Operation is subject to the following two conditions: (1) this device may not cause harmful interference, and (2) this device must accept any interference received, including interference that may cause undesired operation.

To ensure safety of users, the FCC has established criteria for the amount of radio frequency energy that can be safely absorbed by a user or bystander according to the intended usage of the product. This product has been tested and found to comply with the FCC criteria. The baby unit shall be installed and used such that parts of all persons' body are maintained at a distance of approximately 8 in (20 cm) or more. The transmitter and antenna of the parent unit shall be held at least 1 in (2.5 cm) from your face.

This Class B digital apparatus complies with Canadian requirement: CAN ICES-3 (B)/NMB-3(B)

Industry Canada

This device contains licence-exempt transmitter(s)/receiver(s) that comply with Innovation, Science and Economic Development Canada's licence-exempt RSS(s). Operation is subject to the following two conditions: (1) This device may not cause interference. (2) This device must accept any interference, including interference that may cause undesired operation of the device.

The term "IC" before the certification/registration number only signifies that the Industry Canada technical specifications were met.

This product meets the applicable Innovation, Science and Economic Development Canada technical specifications.

RF radiation exposure statement

The baby unit complies with FCC RF radiation exposure limits set forth for an uncontrolled environment. The baby unit should be installed and operated with a minimum distance of 8 in (20 cm) between the baby unit and all persons' body. Use of other accessories may not ensure compliance with FCC RF exposure guidelines. This transmitter must not be co-located or operating in conjunction with any other antenna or transmitter. This equipment complies also with Industry Canada RSS-102 with respect to Canada's Health Code 6 for Exposure of Humans to RF Fields.

1 Align the wall mount holes at the bottom of the baby unit with the screws on the wall. Slide the baby unit down until it locks into place.

2 Adjust the camera angle.

FOR CÉT/L COMPLIANCE ONLY

Mesures de sécurité importantes

La plaque signalétique appliquée est située au bas du socle de l'unité du bébé.

Lorsque vous utilisez votre appareil, vous devriez toujours suivre certaines mesures de précaution de base afin de réduire les risques d'incendie, d'électrocution et de blessures corporelles, dont ceux qui suivent:

- Observez toutes les instructions et mises en garde inscrites sur l'appareil.
- L'installation par un adulte est requise.
- MISE EN GARDE:** N'installez pas l'unité du bébé à une hauteur supérieure à 2 mètres.
- Ce produit ne remplace pas la surveillance adulte du nourrisson. La supervision du nourrisson est la responsabilité du parent ou de la personne qui s'occupe de l'enfant. Ce produit pourrait cesser de fonctionner et, par conséquent, vous ne devriez pas présumer qu'il continuera de fonctionner correctement pendant une période de temps donnée. De plus, il ne s'agit pas d'un instrument médical et ne devrait pas être utilisé comme tel. Ce produit est destiné à vous aider à superviser votre bébé.
- N'utilisez pas cet appareil près de l'eau ni de toute autre source d'humidité, par exemple, près d'une baignoire, d'une cuve à lessive, d'un évier de cuisine, dans un sous-sol humide ni près d'une piscine, dans un sous-sol humide ou une douche.
- MISE EN GARDE:** Utilisez uniquement les piles fournies. Examinez les compositions des piles afin de vérifier si celles-ci ne sont pas endommagées.
- Il existe un très faible risque de perte de confidentialité avec certains appareils électroniques (autres écouteurs-bébé, téléphones sans fils etc.). Pour l'éviter, s'assurer que le produit n'a jamais été utilisé avant l'achat, réinitialiser l'unité de façon périodique, éteindre l'écoute-bébé quand il n'est pas en cours d'utilisation.
- Les enfants devraient être supervisés afin de vous assurer qu'ils ne jouent pas avec l'appareil.
- Le produit n'est pas conçu pour être utilisé par des personnes (incluant des enfants) aux capacités physiques, sensorielles ou mentales réduites ou qui manquent d'expérience et de connaissances, à moins qu'on leur ait donné suffisamment de supervision ou d'instructions relatives à l'utilisation de l'appareil par une personne responsable de leur sécurité.

CONSERVEZ CES INSTRUCTIONS

Mises en garde:

- Utilisez et entreposez le produit à une température entre 0° C (32° F) et 40° C (104° F).
- N'exposez pas cet appareil à des froids ou des chaleurs extrêmes, ainsi qu'à la lumière directe du soleil. Ne l'installez pas près d'une source de chauffage.
- Le bloc-piles ne doit pas être exposé à la chaleur excessive telle que la lumière du soleil ou au feu.
- Avertissement - Risque de strangulation** - Les enfants se sont **ÉTRANGLES** dans des cordons. Gardez les cordons hors de portée des enfants (à plus de 0,9 m). N'enlevez pas cette étiquette.
- Ne jamais placer le moniteur à l'intérieur du berceau ou du parc de bébé. Ne jamais couvrir le moniteur ou l'unité (s) portable avec un article tel une serviette ou une couverture.
- D'autres équipements électroniques peuvent produire des interférences sur votre moniteur vidéo et audio. Tentez d'installer votre moniteur vidéo ou audio à l'écart des appareils électroniques tels que des routeurs sans fil, radios, téléphones cellulaires, interphones, monteurs, téléphones, ordinateurs personnels, électromoteurs et téléphones sans fil.

Stimulateurs cardiaques implantés dans l'organisme

Les stimulateurs cardiaques (ne s'applique qu'aux dispositifs numériques sans fil)

L'organisme Wireless Technology Research, LLC (WTR), une firme de recherche indépendante, a mené une évaluation pluridisciplinaire des interférences entre les téléphones sans fil portatifs et les stimulateurs cardiaques implantés dans l'organisme. Appuyée par l'Administration des aliments et drogues (FDA) des États-Unis, la firme WTR recommande aux médecins:

Avs aux détenteurs de stimulateurs cardiaques

- Vous devriez maintenir les dispositifs sans fil à au moins six pouces du stimulateur cardiaque.
- Ils ne doivent PAS placer le téléphone sans fil directement sur le stimulateur cardiaque, tel que dans une poche de chemise, lorsque celui-ci est en marche.

L'étude effectuée par l'organisme WRS n'a pas identifiée de risque pour les détenteurs de stimulateurs cardiaques causés par les téléphones sans fil à proximité de ceux-ci.

Champs électromagnétiques (EMF)

Ce produit de VTech est conforme à toutes les normes se rapportant aux champs électromagnétiques (EMF) standard. Si vous le manipulez correctement en suivant les instructions de ce guide, son utilisation sera sécuritaire pendant de nombreuses années, selon les meilleures évidences scientifiques dont nous disposons aujourd'hui.

FOR VM350-2 ONLY

17. N'enfoncez jamais d'objets à travers les ouvertures de cet appareil, car ils pourraient entrer en contact avec des points de tension dangereux ou causer des courts-circuits qui peuvent dégrader ou incendier ou en risques d'électrocution. Ne renversez jamais de liquide dans ce produit.

18. Afin de réduire les risques d'électrocution, ne démontez pas cet appareil, mais apportez-le dans un centre de service autorisé. L'ouverture du boîtier ou le retrait de toutes pièces qui contiennent cet appareil, à l'exception de faces autorisées à certaines portes ou ouvertures, risque de vous exposer à des points de tension dangereux ou d'autres dangers. Un remontage incorrect peut par la suite présenter des risques d'électrocution.

19. Vous devriez tester la réception chaque fois que vous mettez l'appareil en fonction.

20. Examinez les compositions des piles afin de vérifier si celles-ci ne sont pas endommagées.

21. Il existe un très faible risque de perte de confidentialité avec certains appareils électroniques (autres écouteurs-bébé, téléphones sans fils etc.). Pour l'éviter, s'assurer que le produit n'a jamais été utilisé avant l'achat, réinitialiser l'unité de façon périodique, éteindre l'écoute-bébé quand il n'est pas en cours d'utilisation.

22. Les enfants devraient être supervisés afin de vous assurer qu'ils ne jouent pas avec l'appareil.

23. Le produit n'est pas conçu pour être utilisé par des personnes (incluant des enfants) aux capacités physiques, sensorielles ou mentales réduites ou qui manquent d'expérience et de connaissances, à moins qu'on leur ait donné suffisamment de supervision ou d'instructions relatives à l'utilisation de l'appareil par une personne responsable de leur sécurité.

CONSERVEZ CES INSTRUCTIONS

Mises en garde:

- Utilisez et entreposez le produit à une température entre 0° C (32° F) et 40° C (104° F).
- N'exposez pas cet appareil à des froids ou des chaleurs extrêmes, ainsi qu'à la lumière directe du soleil. Ne l'installez pas près d'une source de chauffage.
- Le bloc-piles ne doit pas être exposé à la chaleur excessive telle que la lumière du soleil ou au feu.
- Avertissement - Risque de strangulation** - Les enfants se sont **ÉTRANGLES** dans des cordons. Gardez les cordons hors de portée des enfants (à plus de 0,9 m). N'enlevez pas cette étiquette.
- Ne jamais placer le moniteur à l'intérieur du berceau ou du parc de bébé. Ne jamais couvrir le moniteur ou l'unité (s) portable avec un article tel une serviette ou une couverture.
- D'autres équipements électroniques peuvent produire des interférences sur votre moniteur vidéo et audio. Tentez d'installer votre moniteur vidéo ou audio à l'écart des appareils électroniques tels que des routeurs sans fil, radios, téléphones cellulaires, interphones, monteurs, téléphones, ordinateurs personnels, électromoteurs et téléphones sans fil.

Stimulateurs cardiaques implantés dans l'organisme

Les stimulateurs cardiaques (ne s'applique qu'aux dispositifs numériques sans fil)

L'organisme Wireless Technology Research, LLC (WTR), une firme de recherche indépendante, a mené une évaluation pluridisciplinaire des interférences entre les téléphones sans fil portatifs et les stimulateurs cardiaques implantés dans l'organisme. Appuyée par l'Administration des aliments et drogues (FDA) des États-Unis, la firme WTR recommande aux médecins:

Avs aux détenteurs de stimulateurs cardiaques

- Vous devriez maintenir les dispositifs sans fil à au moins six pouces du stimulateur cardiaque.
- Ils ne doivent PAS placer le téléphone sans fil directement sur le stimulateur cardiaque, tel que dans une poche de chemise, lorsque celui-ci est en marche.

L'étude effectuée par l'organisme WRS n'a pas identifiée de risque pour les détenteurs de stimulateurs cardiaques causés par les téléphones sans fil à proximité de ceux-ci.

Champs électromagnétiques (EMF)

Ce produit de VTech est conforme à toutes les normes se rapportant aux champs électromagnétiques (EMF) standard. Si vous le manipulez correctement en suivant les instructions de ce guide, son utilisation sera sécuritaire pendant de nombreuses années, selon les meilleures évidences scientifiques dont nous disposons aujourd'hui.

LIMITED WARRANTY

What does this limited warranty cover?

The manufacturer of this VTech Product warrants to the holder of a valid proof of purchase ("Consumer" or "you") that the Product and all accessories provided in the sales package ("Product") are free from defects in material and workmanship, pursuant to the following terms and conditions, when installed and used normally and in accordance with the Product operating instructions. This limited warranty extends only to the Consumer for Products purchased and used in the United States of America and Canada.

What will VTech do if the Product is not free from defects in materials and workmanship during the limited warranty period ("Materially Defective Product")?

During the limited warranty period, VTech's authorized service representative will repair or replace at VTech's option, without charge, a Materially Defective Product. If we repair the Product, we may use new or refurbished replacement parts. If we choose to replace the Product, we may replace it with a new or refurbished Product of the same or similar design. We will retain defective parts, modules, or equipment. Repair or replacement of the Product, at VTech's option, is your exclusive remedy. VTech will return the repaired or replacement Products to you in working condition. You should expect the repair or replacement to take approximately 30 days.

How long is the limited warranty period?

The limited warranty period for the Product extends for ONE (1) YEAR from the date of purchase. If VTech repairs or replaces a Materially Defective Product under the terms of this limited warranty, this limited warranty also applies to the repaired or replacement Product for a period of either (a) 90 days from the date the repaired or replacement Product is shipped to you or (b) the time remaining on the original one-year warranty, whichever is longer.

What is not covered by this limited warranty?

This limited warranty does not cover:

- Product that has been subjected to misuse, accident, shipping or other physical damage, improper installation, abnormal operation or handling, neglect, inundation, fire, water or other liquid intrusion; or
- Product that has been damaged due to repair, alteration or modification by anyone other than an authorized service representative of VTech; or
- Product to the extent that the problem experienced is caused by signal conditions, network reliability, or cable or antenna systems; or
- Product to the extent that the problem is caused by use with non-VTech accessories; or
- Product whose warranty/quality stickers, product serial number plates or electronic serial numbers have been removed, altered or rendered illegible; or
- Product purchased, used, serviced, or shipped from repair outside the United States of America or Canada, or used for commercial or institutional purposes (including but not limited to Products used for rental purposes); or
- Product returned without a valid proof of purchase (see item 2 below); or
- Charges for installation or set up, adjustment of customer controls, and installation or repair of systems outside the unit.

How do you get warranty service?

To obtain warranty service in the USA, please visit our website at www.vtechphones.com or call 1 (800) 995-9511. In Canada, go to www.vtechcanada.com or call 1 (800) 267-7377.

NOTE: Before calling for service, please review the user's manual - a check of the Product's controls and features may save you a service call.

Except as provided by applicable law, you assume the risk of loss or damage during transit and transportation and are responsible for delivery or handling charges incurred in the transport of the Product(s) to the service location. VTech will return repaired or replaced Product under this limited warranty. Transportation, delivery or handling charges are prepaid. VTech assumes no risk for damage or loss of the Product in transit. If the Product failure is not covered by this limited warranty, or proof of purchase does not meet the terms of this limited warranty, VTech will notify you and will request that you authorize the cost of repair prior to any further repair activity. You must pay for the cost of repair and return shipping costs for the repair of Products that are not covered by this limited warranty.

What must you return with the Product to get warranty service?

- Return the entire original package and contents including the Product to the VTech service location along with a description of the malfunction or difficulty; and
- Include a "valid proof of purchase" (sales receipt) identifying the Product purchased (Product model) and the date of purchase or receipt; and
- Provide your name, complete and correct mailing address, and telephone number.

Other limitations

This warranty is the complete and exclusive agreement between you and VTech. It supersedes all other written or oral communications related to this Product. VTech provides no other warranties for this Product. The warranty exclusively describes all of VTech's responsibilities regarding the Product. There are no other express warranties. No one is authorized to make modifications to this limited warranty and you should not rely on any such modification. State/Provincial Law Rights: This warranty gives you specific legal rights, and you may also have other rights, which vary from state to state or province to province.

Limitations: Implied warranties, including those of fitness for a particular purpose and merchantability (an unwritten warranty that the Product is fit for ordinary use) are limited to one year from the date of purchase. Some states/provinces do not allow limitations on how long an implied warranty lasts, so the above limitation may not apply to you. In no event shall VTech be liable for any indirect, special, incidental, consequential, or similar damages (including, but not limited to lost profits or revenue, inability to use the Product or other associated equipment, the cost of substitute equipment, and claims by third parties) resulting from the use of this Product. Some states/provinces do not allow the exclusion or limitation of incidental or consequential damages, so the above limitation or exclusion may not apply to you.

Please retain your original sales receipt as proof of purchase.

CALIFORNIA ENERGY COMMISSION BATTERY CHARGING TESTING MODE

This baby monitor meets the California Energy Commission (CEC) regulations for energy consumption. Your baby monitor is set up to comply with the energy-conserving standards right out of the box. Follow the instructions to install and charge the battery. The CEC battery charging testing mode is activated while charging. Even if the parent unit is paired to baby units, the CEC battery charging testing mode is activated while it is powered off and charging.