

Go to www.vtechphones.com to register your product for enhanced warranty support and the latest VTech product news.

VM350 VM350-2

Full Color Video Monitor



For more support information



vtech® Quick start guide

The *Heart Beat* sound file was created by Zarabeden, and is used under the Creative Commons license. The *Crickets At Night* sound file was created by Mike Koening, and is used under the Creative Commons license. The *Stream Noise* sound file was created by Caroline Ford, and is used under the Creative Commons license. The *Background Noise* sound file was created by Caroline Ford, and is used under the Creative Commons license. Credits:

Frequency control	Crystal controlled PLL synthesizer
Transmit frequency	Parent unit: 2405 - 2475 MHz Baby unit: 2405 - 2475 MHz
Channels	32
LCD	5" Color LCD (WVGA 480x272 pixel)
Normal effective range	May vary according to environmental conditions at the time of use.
Power requirements	Parent unit power adapter Output: 5V DC @ 1A Parent unit battery: 3.8V 2100mAh Li-ion battery

TECHNICAL SPECIFICATIONS

IMPORTANT SAFETY INSTRUCTIONS

The applied nameplate is located at the bottom of the baby unit's base. When using your equipment, basic safety precautions should always be followed to reduce the risk of fire, electric shock and injury, including the following:

- Follow all warnings and instructions marked on the product.
- Adult setup is required.
- CAUTION:** Do not install the baby unit at a height above 2 meters.
- This product is not a substitute for adult supervision of the infant. Supervising the infant is the parent's or caregiver's responsibility. This product could cease operating, and therefore you should not assume it will continue working properly for any given period of time. Further, this is not a medical device and should not be used as such. This product is intended to assist you in supervising your baby.
- Do not use this product near water. For example, do not use it next to a bath tub, wash bowl, kitchen sink, laundry tub or swimming pool, or in a wet basement or shower.
- CAUTION:** Use only the batteries provided. There may be a risk of explosion if a wrong type of battery is used for the parent unit. The batteries cannot be subjected to high or low extreme temperature and low air pressure at high altitude during use, storage or transportation. Disposal of batteries into fire or a hot oven, or mechanically crushing or cutting the batteries can result in an explosion. Leaving the batteries in an extremely high temperature surrounding environment can result in an explosion or the leakage of flammable liquid of gas. Batteries subjected to extremely low air pressure may result in an explosion or the leakage of flammable liquid or gas. Dispose of used battery according to the information in The RBRC seal.
- Use only the adapters included with this product. Incorrect adapter polarity or voltage can seriously damage the product.
- Use only adaptors and batteries listed below.

Power adapter information:
VTech Telecommunications Ltd.
Model: VT05EU50505040 (Baby unit); VT05EU50505050 (Parent unit)

Rechargeable batteries information:
ZHONGSHAN TIANMAO BATTERY CO., LTD
3.8V 2100mAh Li-ion Battery (Model: TP300)

- The power adapters are intended to be correctly oriented in a vertical or floor mount position. The prongs are not designed to hold the plug in place if it is plugged into a ceiling, under-the-table or cabinet outlet.
- For pluggable equipment, the socket-outlet shall be installed near the equipment and shall be easily accessible.
- Unplug this product from the wall outlet before cleaning. Do not use liquid or aerosol cleaners. Use a damp cloth for cleaning.
- Unplug the power cords before replacing batteries.
- Do not cut off the power adapters to replace them with other plugs, as this causes a hazardous situation.
- Do not allow anything to rest on the power cords. Do not install this product where the cords may be walked on or crimped.
- This product should be operated only from the type of power source indicated on the marking label. If you are not sure of the type of power supply in your home, consult your dealer or local power company.
- Do not overload wall outlets or use an extension cord.
- Do not place this product on an unstable table, shelf, stand or other unstable surfaces.
- This product should not be placed in any area where proper ventilation is not provided. Slots and openings in the back or bottom of this product are provided for ventilation. To protect them from overheating, these openings must not be blocked

by placing the product on a soft surface such as a bed, sofa or rug. This product should never be placed near or over a radiator or heat register.

- Never push objects of any kind into this product through the slots because they may touch dangerous voltage points or create a short circuit. Never spill liquid of any kind on the product.
- To reduce the risk of electric shock, do not disassemble this product, but take it to an authorized service facility. Opening or removing parts of the product other than specified access doors may expose you to dangerous voltages or other risks. Incorrect reassembling can cause electric shock when the product is subsequently used.
- You should test the sound reception every time you turn on the units or move one of the components.
- Periodically examine all components for damage.
- There is a very low risk of privacy loss when using certain electronic devices, such as baby monitors, cordless telephones, etc. To protect your privacy, make sure the product has never been used before purchase, reset the baby monitor periodically by powering off and then powering on the units, and power off the baby monitor if you will not use it for some time.
- Children should be supervised to ensure that they do not play with the product.
- The product is not intended for use by persons (including children) with reduced physical, sensory or mental capabilities, or lack of experience and knowledge, unless they have been given supervision or instruction concerning use of the appliance by a person responsible for their safety.

SAVE THESE INSTRUCTIONS

Warnings

- Use and store the product at a temperature between 32°F and 104°F.
- Do not expose the product to extreme cold, heat or direct sunlight. Do not put the product close to a heating source.
- Batteries should not be exposed to excessive heat such as bright sunshine or fire.

Warning—Strangulation Hazard—Children
have STRANGLING in cords. Keep this cord out of the reach of children (more than 3 ft (0.9 m) away). Do not remove this tag.

- Never place the baby unit inside the baby's crib or playpen. Never cover the baby unit or parent unit with anything such as a towel or a blanket.
- Other electronic products may cause interference with your baby monitor. Try installing your baby monitor as far away from these electronic devices as possible: wireless routers, radios, cellular telephones, intercoms, room monitors, televisions, personal computers, kitchen appliances and cordless telephones.

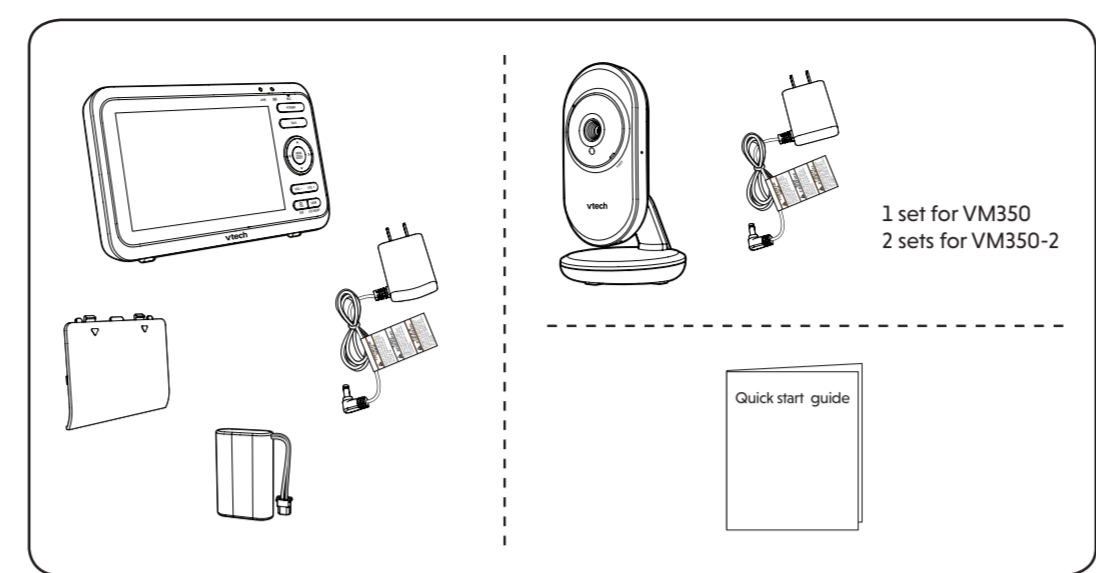
Precautions for users of implanted cardiac pacemakers
Cardiac pacemakers (applies only to digital cordless devices): Wireless Technology Research, LLC (WTR), an independent research entity, led a multidisciplinary evaluation of the interference between portable wireless devices and implanted cardiac pacemakers. Supported by the U.S. Food and Drug Administration, WTR recommends to physicians that:

Pacemaker patients

- Should keep wireless devices at least six inches from the pacemaker.
- Should NOT place wireless devices directly over the pacemaker, such as in a breast pocket, when it is turned ON. WTR's evaluation did not identify any risk to bystanders with pacemakers from other persons using wireless devices.

Electromagnetic fields (EMF)
This VTech product complies with all standards regarding electromagnetic fields (EMF). If handled properly and according to the instructions in this user's manual, the product is safe to be used based on scientific evidence available today.

WHAT'S IN THE BOX



1 CONNECT THE BABY MONITOR

Install the battery
The parent unit runs on rechargeable battery or AC power. To continuously monitor your baby, make sure you use both battery and AC power at the same time. With the battery alone, the parent unit can cordlessly run for a short time only.

NOTES

- Use only the battery supplied with this product.
- If the parent unit will not be used for a long time, disconnect and remove the battery to prevent possible leakage.

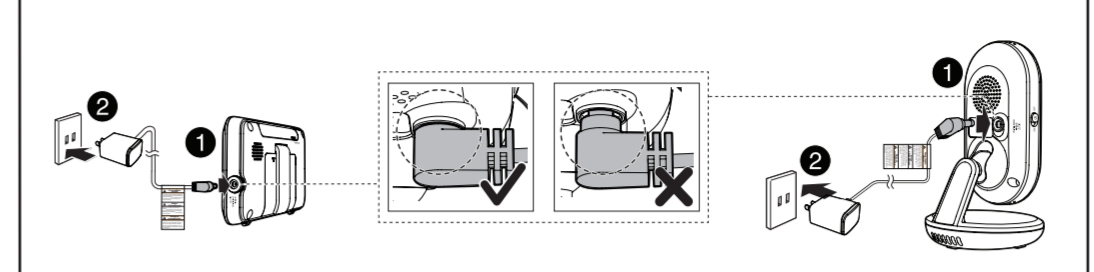
- Press down on the battery compartment cover to pull it out.
- Make sure the label **THIS SIDE UP** is facing up while inserting the battery.

Replace the battery
To replace the battery, press down on the battery compartment cover and pull it out, then follow the steps above to install the battery.

Connect the baby monitor

NOTES

- Use only the power adapters supplied with this product.
- Make sure the baby monitor is not connected to the switch controlled electric outlet.
- Connect the power adapters in a vertical or floor mount position only. The adapters' prongs are not designed to hold the weight of baby monitor, so do not connect them to any ceiling, under-the-table, or cabinet outlets. Otherwise, the adapters may not properly connect to the outlets.
- Make sure the parent unit, the baby unit and the power adapter cords are out of reach of children.



Charge the parent unit battery

When you have connected and turned on the parent unit, the battery will be charged automatically.

NOTES

- Before using the baby monitor for the first time, charge the parent unit battery for 12 hours. When the parent unit battery is fully charged, the battery icon becomes solid.
- It takes longer to charge the battery when the parent unit is turned on. To shorten the charging time, turn the parent unit off while charging.
- The standby time varies depending on the sensitivity level you set, your actual use and the age of the battery.

2 POWER ON OR OFF THE BABY MONITOR

- Slide the **ON/OFF** switch to power on or off your baby unit.
- Press and hold **POWER** to power on or off your parent unit.

Power on (Long press)

Power off (Long press)

3 POSITIONING THE BABY MONITOR

CAUTION

- Keep the baby unit out of the reach of your baby. Never place or mount the baby unit inside the baby's crib or playpen.

- Position the baby unit at least 3ft (1m) away from the parent unit.
- Position the baby unit at least 3ft (1m) away from the parent unit.
- Position the baby unit at least 3ft (1m) away from the parent unit.
- Position the baby unit at least 3ft (1m) away from the parent unit.

CAUTION

- The default volume of your parent unit is level 4, and the maximum volume is level 7. If you experience high-pitched screaming noise from your baby monitor while positioning:
 - Make sure your baby unit and parent unit are more than 3 feet (1 meter) apart, OR
 - Lower the volume of your parent unit.

NOTE

- To avoid interference from other electronic devices, place your baby monitor at least 3 feet (1 meter) away from devices such as wireless routers, microwaves, cell phones and computers.

4 STATUS CHECK

Once you power on both your baby unit and parent unit, your parent unit displays image from the baby unit, and the **LINK LED** light turns on.

The **POWER LED** light of baby unit turns on.

BASIC OPERATION - PARENT UNIT

Adjust speaker volume
Press **VOL+** / **VOL-** to adjust your parent unit speaker volume.

Zoom
Press **Q** to zoom in or out.

Talk to your baby unit
Press and hold **TALK** and speak to your parent unit. Your voice is transmitted to the baby unit. Release **TALK** when finish talking and hear your baby again.

Turn off the screen
Press and hold **LCD ON/OFF** to switch off the parent unit. You can still hear sound from the baby unit.

TIP
Press any keys on the parent unit to turn on the screen again.

Use the menu
Press **MENU/SELECT** to enter the menu, choose a menu item, or save a setting. You can use the parent unit for advanced settings or operations, such as to play or stop the baby unit lullaby, or to adjust the baby unit sound sensitivity.

While in the menu:

- Press **<** or **>** to scroll among the menu options.
- Press **MENU/SELECT** to select an item, or to save a setting.
- Press **▲** or **▼** to scroll among the sub-menus, or to adjust a setting.
- Press **<** to return to the previous menu options without changing the current setting.
- Press **Q/EXIT** to return to live video.

OVERVIEW - PARENT UNIT

1 LCD display	7 Arrow keys	13 Speaker
2 Antenna	8 MENU/SELECT	14 Battery compartment cover
3 LED lights	9 Power jack	15 Stand
4 Microphone	10 VOL - / VOL +	
5 POWER	11 VIEW / LCD ON/OFF	
6 TALK	12 Q / EXIT	

OVERVIEW - BABY UNIT

- Pair hole**
Your baby units and parent unit provided are already paired.
- POWER LED light**
On when the baby unit is turned on and is paired to the parent unit.
Flashes when the baby unit is not being viewed; or when the link to the parent unit is lost.
- Microphone**
- Camera**
- Infrared LEDs**
- Light sensor**
- ON/OFF switch**
Slide to turn on or off the baby unit.
- Speaker**
- Power jack**
- Wall mount holes**

NEED HELP?

For operations and guides to help you using your video monitor, and for latest information and supports, go and check the online help topics and online FAQs.

Use your smartphone or mobile device to access our online help.

- Go to <https://help.vtechphones.com/vm350> or <https://help.vtechphones.com/vm350-2>; OR
- Scan the QR code on the right. Launch the camera app or QR code scanner app on your smartphone or tablet. Hold the device's camera up to the QR code and frame it. Tap the notification to trigger the redirection of the online help.
- If the QR code is not clearly displayed, adjust your camera's focus by moving your device closer or further away until it is clear.

You can also call our Customer Support at 1 (800) 595-9511 [in US] or 1 (800) 267-7377 [in Canada] for help.

PARENT UNIT ICONS

Main menu icons

Main menu	Sub-menu	Main menu	Sub-menu	Main menu	Sub-menu
Brightness	Adjust the parent unit's LCD brightness.	Alert tones	Set the parent unit to beep when the battery is low.	Sound activation - screen and audio	ON/OFF Turn on/off sound activation
Camera settings	Baby unit speaker volume Adjust the baby unit's speaker volume.		Set the parent unit to beep when the link between the parent unit and the baby unit is lost.		Set sound activation on or off.
	Monitoring mode (For VM350-2 only)		Set the confirmation tone on or off when selecting an option in the menus.		When it is on, and the baby unit detects no sound, the parent unit screen stays off to save power. Once a sound is detected, the parent unit screen and speaker turns on automatically, and you can see and hear your baby. The parent unit will then turn off again after 50 seconds of no sound detection.
	Single mode		Set the parent unit to beep when the baby unit detects sounds while in Split mode (For VM350-2 only).		NOTE When the parent unit screen is off and it receives alerts, for example, link lost between parent unit and baby unit, or battery is low, the parent unit screen and speaker will turn on for 10 seconds.
	Split mode				
	Patrol mode		ON/OFF Turn on/off the alert vibration.		
Lullaby	Play/Stop lullaby	Temperature			VOX (Voice Activated Alert) Sensitivity
	Select one of the soothing sounds, or white noise.		Turn on/off temperature alert tone.		You can set VOX sensitivity level to activate parent unit screen and sound when baby unit detects sounds that exceed certain levels. See Sound sensitivity and sound activation section.
	Select one of the five melodies.		Set the parent unit to beeps whenever the room temperature detected by the baby unit falls outside of the set temperature range.		
	Play all melodies.		Set the minimum temperature.		
	60min 45min 30min 15min		Set the maximum temperature.		
	Set timer to stop playing the selected melody or soothing sound.		Set temperature display in Fahrenheit (°F) or Celsius (°C)		

