

Go to www.vtechphones.com to register your product for enhanced warranty support and the latest VTech product news.

VM5251
VM5251-2
Full Color Video Monitor
Ⓢ

Congratulations

on purchasing your new VTech product. Before using this product, please read **Important safety instructions**. This manual has all the feature operations and troubleshooting necessary to install and operate your new VTech product. Please review this manual thoroughly to ensure proper installation and operation of this innovative and feature rich VTech product.

For support, shopping, and everything new at VTech, visit our website at www.vtechphones.com.

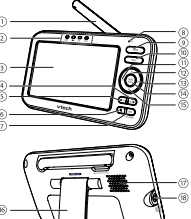
What's in the box



1 set for VM5251
2 sets for VM5251-2

vtech
User's manual

Parent unit overview



1	Antenna
2	LED lights • Indicate the different statuses of the parent unit. For details, refer to Parent unit lights .
3	Monitor
4	VDL • Press to increase the parent unit speaker volume.
5	VDL • Press to decrease the parent unit speaker volume.
6	Ⓢ • Press to zoom in or out while viewing image in Single CAM or Patrol mode .
7	VIEW / LCD ON/OFF • Press and hold to turn off the parent unit screen. • Press to view the image of the next baby unit in Single CAM or Patrol mode .
8	Microphone

9	POWER • Press and hold to power on. • Press and hold again to power off.
10	TALK • Press and hold to talk to the selected baby unit in Single CAM or Patrol mode .
11	◀ • While in a menu, press to return to the main menu or idle screen. • While viewing zoomed image, press and hold to move the zoomed image leftward. • While in Split mode , press to move the selection box leftward.
12	▲ • While in a menu, press to scroll up. • While viewing zoomed image, press and hold to move the zoomed image upward. • While in Split mode , press to move the selection box upward.
13	▶ • While in a menu, press to choose an item. • While viewing zoomed image, press and hold to move the zoomed image rightward. • While in Split mode , press to move the selection box rightward.
14	MENU/SELECT • Press to enter the menu. • While in a menu, press to choose an item, or save a setting.
15	▼ • While in a menu, press to scroll down. • While viewing zoomed image, press and hold to move the zoomed image downward. • While in Split mode , press to move the selection box downward.
16	Stand
17	Speaker
18	Power jack

Parent unit lights

LINK	On when the parent unit is linked to the baby unit. Flashes when the link to the baby unit being viewed in Single CAM or Patrol mode is lost; or when the link to all baby units being viewed in Split mode is lost.
🔋	On when the parent unit is connected to AC power, or the battery is charging. Flashes when the parent unit battery is low and needs charging. Off when the parent unit is disconnected from AC power.
🔊	On when the speaker volume of the parent unit is turned off.
TALK	On when the parent unit is talking to the baby unit.

Parent unit display icons

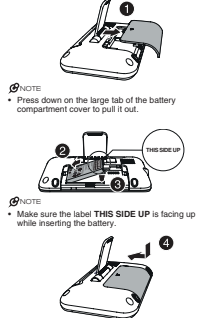
📶	Connection status • 📶 displays when strong signal strength is detected between the baby unit and the parent unit. • 📶 or 📶 displays when moderate to low signal strength is detected between the baby unit and the parent unit. • 📶 displays when the link between the baby unit and the parent unit is lost.
🎵	Lullaby • Displays when the baby unit being viewed is playing lullaby.
📶 or 📶 or 📶	Current view status • Displays the number of the baby unit that is being viewed when in Single CAM and Patrol mode . • Displays the number of the highlighted baby unit when in Split mode .
👤	Patrol mode • Displays when the parent unit is in Patrol mode .

Install the battery

The parent unit runs on rechargeable battery or AC power. To continuously monitor your baby, make sure you use both battery and AC power at the same time. With the battery alone, the parent unit can cordlessly run for a short time only.

- NOTES**
- Use only the battery supplied with this product.
 - The operating time for using the rechargeable battery is short. If you want to monitor your baby for a long time, we recommend you connect the parent unit to AC power.
 - If the parent unit will not be used for a long time, disconnect and remove the battery to prevent possible leakage.

Install the battery as shown below.



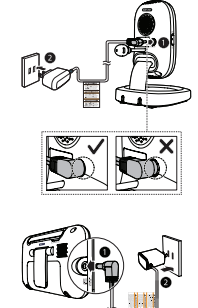
Replace the battery

To replace the battery, press down on the large tab of the battery compartment cover and pull it out, then follow the steps above to install the battery.

Connect and charge the battery

- NOTES**
- Use only the battery supplied with this product.
 - Use only the power adapters supplied with this product.
 - Make sure the electrical outlets are not controlled by wall switches.
 - The power adapters are intended to be correctly oriented in a vertical or floor mount position. The prongs are not designed to hold the plug in place if they are plugged into a ceiling, under-the-table or cabinet outlet.
 - Make sure the parent unit, the baby unit and the power adapter cords are out of reach of children.

Connect the baby monitor



Charge the parent unit battery

When you have connected the parent unit and installed its battery for the first time or after power outage, the parent unit powers on automatically. The battery icon indicates the battery status (see the following table).

- NOTES**
- The parent unit battery is fully charged after 2 hours of continuous charging.
 - It takes longer to charge the battery when the parent unit is turned on. To shorten the charging time, turn the parent unit off while charging.
 - The standby time varies depending on the sensitivity level you set, your actual use and the age of the battery.

Battery Indicators	Battery Status	Action
The battery icon is off and displays.	No battery is installed but operates using AC power, or the battery has been installed incorrectly.	Install the parent unit battery. Charge without interruption (at least 30 minutes).
The screen displays Battery low at Parent Unit and the light flashes.	The battery has very little charge and may be used for only a short time.	Charge without interruption (about 30 minutes).
The battery icon becomes solid.	The battery is fully charged.	To keep the battery charged, connect it to AC power when not in use.

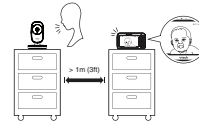
Before use

- NOTE**
- This baby monitor is intended as an aid. It is not a substitute for proper adult supervision, and should not be used as such.

Test your baby monitor

You may test the baby monitor before initial use, and at regular times thereafter.

- CAUTION**
- For hearing protection, make sure the parent unit is more than 1 meter (3 feet) away from the baby unit. If you hear any high-pitched noise, move the parent unit further until from the baby unit. You can also press **VDL** on the parent unit to lower or mute the noise.



1. Make sure your baby units and parent unit are on.
2. The parent unit displays images from the baby unit.
• Speak towards the baby unit microphone. You will hear the sound at the parent unit.
3. If you have two baby units, press **VIEW** on your parent unit. The screen switches to other baby units. Then, repeat step 2.

- NOTE**
- When the parent unit displays **LINK** and then **No link to CAM #** (if represents the selected baby unit number), and the **LINK LED** light flashes, move the parent unit closer to the baby unit (observe the minimum distance of 1 meter/3 feet). You can also check if the baby monitor is connected to a live power socket and switched on.

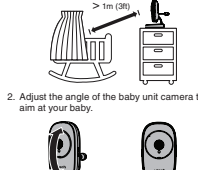
- TIP**
- Increase the parent unit speaker volume if you cannot hear the sounds transmitted from the baby unit.

Positioning the baby monitor

- CAUTION**
- Keep the baby units out of the reach of your baby.
 - Never place or mount the baby units inside the baby's crib or playpen.

- NOTE**
- To avoid interference from other electronic devices, place your baby monitor far away from devices such as wireless routers, microwaves, cell phones and computers.

1. Place the baby units more than 1 meter (3 feet) away from your baby.



2. Adjust the angle of the baby unit camera to aim at your baby.

3. Place the parent unit more than 1 meter (3 feet) away from the baby units.

- ✓
- ✗

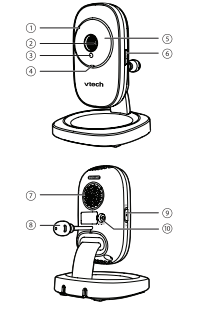
- CAUTION**
- The default volume of your parent unit is level 4. If you experience high-pitched screeching noise from your baby monitor while positioning:
- Make sure your baby units and parent unit are more than 1 meter (3 feet) apart. Or
- Turn down the volume of your parent unit.

Operating range

The operating range of the baby monitor is up to 300 meters (1,000 feet) outdoors or 50 meters (160 feet) indoors. The actual operating range may vary depending on the environmental conditions and other interferences such as walls, doors and other obstructions.

Overview

Baby unit overview



1	Microphone
2	Camera
3	Light sensor
4	ON/OFF light • On when the baby unit is turned on. • Flashes when the baby unit is not being viewed; or when the link to the parent unit is lost.
5	Infrared LEDs
6	PAIR Your baby unit and parent unit provided are already paired.
7	Speaker
8	Temperature sensor
9	ON/OFF switch Slide to turn on or off the baby unit.
10	Power jack

9	POWER • Press and hold to power on. • Press and hold again to power off.
10	TALK • Press and hold to talk to the selected baby unit in Single CAM or Patrol mode .
11	◀ • While in a menu, press to return to the main menu or idle screen. • While viewing zoomed image, press and hold to move the zoomed image leftward. • While in Split mode , press to move the selection box leftward.
12	▲ • While in a menu, press to scroll up. • While viewing zoomed image, press and hold to move the zoomed image upward. • While in Split mode , press to move the selection box upward.
13	▶ • While in a menu, press to choose an item. • While viewing zoomed image, press and hold to move the zoomed image rightward. • While in Split mode , press to move the selection box rightward.
14	MENU/SELECT • Press to enter the menu. • While in a menu, press to choose an item, or save a setting.
15	▼ • While in a menu, press to scroll down. • While viewing zoomed image, press and hold to move the zoomed image downward. • While in Split mode , press to move the selection box downward.
16	Stand
17	Speaker
18	Power jack

LINK	On when the parent unit is linked to the baby unit. Flashes when the link to the baby unit being viewed in Single CAM or Patrol mode is lost; or when the link to all baby units being viewed in Split mode is lost.
🔋	On when the parent unit is connected to AC power, or the battery is charging. Flashes when the parent unit battery is low and needs charging. Off when the parent unit is disconnected from AC power.
🔊	On when the speaker volume of the parent unit is turned off.
TALK	On when the parent unit is talking to the baby unit.

🔋	Split mode • Displays when the parent unit is in Split mode .
🌙	Night vision • Displays when the baby unit being viewed has activated the night vision feature.
🔍	Zoom • Displays when the baby unit camera has zoomed in.
🔔	Temperature alert tone • Displays when the temperature alert tone is set on.
°F or °C	Real-time temperature • Displays the real-time temperature detected by the baby unit in Fahrenheit (°F) or Celsius (°C) (e.g. 57 °F or 14 °C).
🔇	Mute alert • Displays when the parent unit speaker volume is set to off. • Displays when Split mode is turned on.
📶	9-level sound indicator • 📶 (1 to 3 bars) indicates low sound level detected by the baby unit. • 📶 (4 to 6 bars) indicates moderate sound level detected by the baby unit. • 📶 (7 to 9 bars) indicates high sound level detected by the baby unit (e.g. baby crying loudly).
🔊	Speaker volume • Displays the parent unit speaker volume level while adjusting.
🔋	Battery status • 📶 animates when the battery is charging. • 📶 displays solid when the battery is fully charged. • 📶 displays when the battery is low and needs charging.
🔌	AC power without battery • Displays when the parent unit is connected to AC power without the battery.

👁	Monitoring Mode You can select a monitoring mode (Single CAM , Patrol or Split).
🔔	Alert Tone You can set the parent unit to beep when: • the parent unit operates in low battery condition; • the link between the parent unit and the baby unit is lost; or • the baby unit detects sounds while in Split mode .
🗣	Language You can select a language (English, French or Spanish) to be used in all screen displays.
📺	LCD You can change the brightness of the parent unit screen, or turn on the Dim Mode to save power.
🏷	Rename You can choose a specific name for the baby unit from a pre-defined name list.
🔊	VOX Sensitivity With this feature, you can choose to hear sounds from the baby unit all the time, or to hear sounds that exceed a certain level. You can use the parent unit to adjust the microphone sensitivity of your baby unit. The higher the sensitivity level, the more sensitive the baby unit is in detecting sounds for transmitting to the parent unit.
🔔	Sound-activated Screen Automatically turns on the parent unit screen when a baby unit detects a sound after the screen is turned off. When no sound is detected, the screen is automatically off to save power.
🌡	Temperature You can turn on the Temperature alert tone so the loud parent unit beeps whenever the room temperature detected by the baby unit falls outside of the desired temperature range.

🔌	Lullaby on CAM You can choose a lullaby or soothing sound to comfort your baby.
🔊	Volume on CAM You can adjust the volume of baby units which determines the lullaby volume and talkback volume transmitted from parent unit.

🔌	No link to CAM # * The selected baby unit is out of range or is turned off.
🔋	Battery low at Parent Unit The battery level of the parent unit is very low and needs to be recharged.
🔋	Battery empty, Powering off ... The battery is empty and needs to be recharged.
🔊	Sound detected at CAM # The sound level exceeds the threshold at CAM # in Split mode .
🌡	Temperature high at CAM # or Temperature too low at CAM # The temperature detected by the baby unit is higher/lower than the desired temperature alert range.
🔌	Powering on ... The parent unit is turning on.
🔍	Auto Timer of lullaby is reset The auto timer for playing lullaby is reset.

* 📶 represents the selected baby unit number.

Using the baby monitor

Power on or off the baby unit

- Slide **ON/OFF** switch on the baby unit. The **ON/OFF LED** light turns on.
- Slide **ON/OFF** switch to turn off the baby unit. The **ON/OFF LED** light turns off.

Power on or off the parent unit

- Press **POWER** to turn on the parent unit. The screen turns on.
- Press and hold **POWER** again to turn off the parent unit. The screen turns off.

Turn on or off the parent unit screen

- You can turn on or off the parent unit screen without powering off the baby unit. You can still hear sound from the baby units.
- Press and hold **LCD ON/OFF** on the parent unit to turn off the screen.
- Press any key on the parent unit to turn on the screen again.

Adjust speaker volume

- When the parent unit speaker volume is set to zero, 📶 appears on the screen and the **LED** light turns on.

For baby unit:

- The baby unit speaker volume determines the lullaby volume and talkback volume transmitted from parent unit. The volume can be adjusted in the parent unit.

1. Press **MENU** when the parent unit is idle.
2. Press **V** or **A** to choose **Volume on CAM**, then press **SELECT**.

3. Press **V** or **A** to choose the desired volume level. Level 1 is the softest while level 5 is the loudest. Then press **SELECT** to confirm your selection.

- TIP**
- Volume adjustment with the parent unit menu is available in **Single CAM** and **Patrol mode** only.

Lullaby

The baby monitor has five lullabies and four soothing sounds for you to comfort your baby. You can play lullaby or soothing sound on the baby unit by controlling remotely with the parent unit.

To play lullaby:

1. Press **MENU** when the parent unit is idle.
2. Press **V** or **A** to choose **Lullaby on CAM**, then press **SELECT**.
3. Press **V** or **A** to choose **Play Melodies**, then press **SELECT**.
4. Press **V** or **A** to choose a lullaby, or choose **Play All**, then press **SELECT**.
• If **Play All** is selected, the five lullabies will be played one after the other, until all of them are played.

To play soothing sound:

1. Press **MENU** when the parent unit is idle.
2. Press **V** or **A** to choose **Play Soothing Sounds**, then press **SELECT**.
3. Press **V** or **A** to choose a soothing sound, then press **SELECT**.

To set auto timer for lullaby:

- While the baby unit is playing lullaby or soothing sound, the auto timer feature helps you automatically stop the lullaby or soothing sound after playing for 15:00/45:00 minutes. You can set auto timer for lullaby with the parent unit.

1. Press **MENU** when the parent unit is idle.
2. Press **V** or **A** to choose **LCD Mode**, then press **SELECT**.
3. Press **V** or **A** to choose **Dim Mode**, then press **SELECT**.

4. Press **V** or **A** to choose **Play**, then press **SELECT**.

- While the screen is dimmed, any keypad or alert message will trigger the screen to return to the preset brightness level. After 10 minutes of idle, it will be dimmed again.

Adjust the sound sensitivity of the baby unit

You can choose to hear sounds from the baby unit all the time, or to hear sounds that exceed a certain level. You can use the parent unit to adjust the microphone sensitivity of your baby unit. The higher the **VOX sensitivity level**, the more sensitive the baby unit is in detecting sounds for transmitting to the parent unit. The **VOX sensitivity level** is preset to **HIGHEST**.

Set the language

- You can select a language (English, French or Spanish) to be used in all screen displays.

1. Press **MENU** when the parent unit is idle.
2. Press **V** or **A** to choose **Language**, then press **SELECT**.
3. Press **V** or **A** to choose **English**, **Francia** or **Espanol**, then press **SELECT** to confirm your selection.

Adjust LCD brightness

You can change the brightness of the parent unit screen from **Level 1** to **Level 5**. The **LCD brightness** is preset to **Level 3**.

1. Press **MENU** when the parent unit is idle.
2. Press **V** or **A** to choose **LCD**, then press **SELECT**.
3. Press **SELECT** again to choose **Brightness**.

4. Press **V** or **A** to choose the desired level of brightness, then press **SELECT** to confirm your selection.

Turn on or off the dim mode

The dim mode is preset to turn on to help you save the parent unit power. Whenever the parent unit has been left idle for 10 minutes while the screen is still on, the screen will be dimmed automatically to save power.

1. Press **MENU** when the parent unit is idle.
2. Press **V** or **A** to choose **Dim Mode**, then press **SELECT**.
3. Press **V** or **A** to choose **On**, then press **SELECT**.
4. Press **V** or **A** to choose **Off**, then press **SELECT** to confirm your selection.

- NOTE**
- While the screen is dimmed, any keypad or alert message will trigger the screen to return to the preset brightness level. After 10 minutes of idle, it will be dimmed again.

Adjust the sound sensitivity of the baby unit

You can choose to hear sounds from the baby unit all the time, or to hear sounds that exceed a certain level. You can use the parent unit to adjust the microphone sensitivity of your baby unit. The higher the **VOX sensitivity level**, the more sensitive the baby unit is in detecting sounds for transmitting to the parent unit. The **VOX sensitivity level** is preset to **HIGHEST**.

Set the language

- You can select a language (English, French or Spanish) to be used in all screen displays.

1. Press **MENU** when the parent unit is idle.
2. Press **V** or **A** to choose **Language**, then press **SELECT**.
3. Press **V** or **A** to choose **English**, **Francia** or **Espanol**, then press **SELECT** to confirm your selection.

Adjust LCD brightness

You can change the brightness of the parent unit screen from **Level 1** to **Level 5**. The **LCD brightness** is preset to **Level 3**.

1. Press **MENU** when the parent unit is idle.
2. Press **V** or **A** to choose **LCD**, then press **SELECT**.
3. Press **SELECT**

- Press **V** or **A** to choose the desired VOX sensitivity level, then press **SELECT** to confirm your selection.
- You can adjust the baby unit placement to improve the sound detection.

Turn on or off the sound activation

When sound activation is on, as long as no sound is detected within 50 seconds, the parent screen will turn off automatically to save power. When your baby unit detects a sound, the sound activation triggers the parent unit screen to turn on automatically. When no sound is detected within 50 seconds, the screen will be off again.

- Press **MENU** when the parent unit is idle.
- Press **V** or **A** to choose **Sound-activated Screen**, then press **SELECT**.
- Press **V** or **A** to choose **On** or **Off**, then press **SELECT** to confirm your selection. The screen returns to main menu.

VOICES

- Sound activation is available in **Single CAM** and **Patrol** mode only.
- If **V** or **A** is set to **Highest**, the parent unit screen may remain on continuously even though sound activation is on.

Monitoring mode

Every time the parent unit is turned on, it displays a baby unit in **Single CAM** mode. If there are two baby units in your system, you can monitor your baby in **Patrol** or **Split** mode.

Single CAM	The screen displays a single baby unit in full screen.
Patrol	A single cam view that transmits to different baby unit every 10 seconds.
Split	The screen displays all baby units.

- You can choose the desired monitoring mode.
- Press **MENU** when the parent unit is idle.
 - Press **V** or **A** to choose **Monitoring Mode**, then press **SELECT**.

- Press **V** or **A** to choose **Single CAM, Patrol** or **Split**, then press **SELECT**.

In **Single CAM** or **Patrol** mode:

- Press **VIEW** to view the next baby unit.



- In **Split mode**:
- Press **▲**, **▼**, **<**, **>** to select a baby unit.
 - Press **Q** or **VIEW** key to view the selected baby unit temporarily in **Single CAM** mode. It returns to **Split** mode after 10 seconds.

• The parent unit is muted while in **Split** mode.

Zoom

- You can zoom in or out while viewing image from baby unit in **Single CAM** and **Patrol** mode.
- Press **Q** to hold **▲** or **▼** to move the zoomed image upward, downward, leftward or rightward correspondingly.
- Press **Q** again to zoom out.

Talk

You can use the **TALK** function of the parent unit to comfort your baby in **Single CAM** and **Patrol** mode.

- Press and hold **TALK** on the parent unit. The **TALK** light turns on.
- Speak to words in the microphone on the parent unit. Your voice is broadcast to the baby unit.
- Release the **TALK** key to stop the broadcast. The **TALK** light goes off.

Industry Canada

This device complies with Industry Canada's license-exempt RSSB. Operation is subject to the following two conditions: (1) this device may not cause harmful interference, and (2) this device must accept any interference received, including interference that may cause undesired operation.

To ensure safety of operation, the FCC has established criteria for the amount of radio frequency energy that can be safely absorbed by a user or bystander according to the intended usage of the product. This product has been tested and found to comply with the FCC criteria. The baby unit shall be installed and used such that parts of all persons' body are maintained at a distance of approximately 8 in (20 cm) or more. The transmitter and antenna of the parent unit shall be held at least 1 in (2.5 cm) from your face.

This Class B digital apparatus complies with Canadian requirements. Cet appareil numérique de la classe B est conforme à la norme NMB-3(B) de la Commission canadienne.

The term "IC" before the certification/registration number only signifies that the Industry Canada technical specifications apply.

RF Radiation exposure statement
The baby unit complies with FCC RF radiation exposure limits set forth for an uncontrolled environment. The baby unit should be installed and operated with a minimum distance of 1 in (2 cm) between the baby unit and all persons' body. Use of other accessories may not ensure compliance with FCC RF exposure guidelines. This transmitter must not be co-located or operating in conjunction with any other radio frequency transmitter or receiver, except as authorized by the Federal Communications Commission (FCC) regulations for equipment operation. Your baby monitor is set up to comply with the energy conserving standards right out of the box. Caution: Instructions to install and charge the battery. The CECC battery charging mode is

California Energy Commission battery charging testing mode

This baby monitor meets the California Energy Commission (CEC) regulations for energy consumption. Your baby monitor is set up to comply with the energy conserving standards right out of the box. Caution: Instructions to install and charge the battery. The CECC battery charging mode is

Set alert tone

Low battery tone
You can set the parent unit to beep when the parent unit battery condition is low.

- Press **MENU** when the parent unit is idle.
- Press **V** or **A** to choose **Alert Tone**, then press **SELECT**.
- Press **SELECT** again to choose **Low Battery Tone**.
- Press **V** or **A** to choose **On** or **Off**, then press **SELECT** to confirm your selection.

No link alert
You can set the parent unit to beep when the link between the parent unit and the baby unit is lost.

- Press **MENU** when the parent unit is idle.
- Press **V** or **A** to choose **Alert Tone**, then press **SELECT**.
- Press **V** or **A** to choose **No Link Alert**, then press **SELECT**.
- Press **V** or **A** to choose **On** or **Off**, then press **SELECT** to confirm your selection.

Sound alert in split-view

You can turn on the sound alert feature so that, while in **Split** mode, the parent unit beeps and displays **Sound detected** at CAM # whenever the baby unit detects sounds.

- Press **MENU** when the parent unit is idle.
- Press **V** or **A** to choose **Alert Tone**, then press **SELECT**.
- Press **V** or **A** to choose **Sound Alert in Split-view**, then press **SELECT**.
- Press **V** or **A** to choose **On** or **Off**, then press **SELECT** to confirm your selection.

• The sound alert feature is only available in **Split** mode.

Monitor the temperature

Your baby unit monitors the temperature of your baby's room with its built-in temperature sensor. If the detected temperature is outside of the preset temperature range, the parent unit will display alert message.

Set temperature range

You can set the desired room temperature alert range. The minimum temperature can be activated while charging.

Even if the parent unit is paired to baby units, the CECC battery charging testing mode is activated while it is powered off and charging.

For eEUL compliance only

Mesures de sécurité importantes
Lorsque vous utilisez votre appareil, vous devez toujours suivre certaines mesures de précaution de base afin de réduire les risques d'incendie, d'électrocution et de blessures corporelles, dont ceux qui suivent :

- Observez toutes les instructions et mises en garde inscrites sur l'appareil.
- L'installation par un adulte est requise.
- Ce produit a été conçu pour être un dispositif d'appoint seulement. Il n'est pas le remplacement d'une supervision responsable et adéquate par un adulte et ne devrait pas être utilisé comme telle.
- Ne surchargez pas la fixation adhésive de l'appareil en le plaçant sur un lit, divan, tapis ou toute autre surface similaire. De même, ne le positionnez pas à proximité ni au-dessus d'une source de chaleur ou d'un calorifère. De plus, ne placez pas l'appareil dans un endroit avant de vous assurer qu'il y a une bonne circulation d'air.
- MISE EN GARDE!** Il peut y avoir des risques d'incendie ou de choc électrique si le produit est en contact avec des points de tension dangereux ou si des objets métalliques sont en contact avec les fils dénudés.

MISE EN GARDE! Il peut y avoir des risques d'incendie ou de choc électrique si le produit est en contact avec des points de tension dangereux ou si des objets métalliques sont en contact avec les fils dénudés.

MISE EN GARDE! Il peut y avoir des risques d'incendie ou de choc électrique si le produit est en contact avec des points de tension dangereux ou si des objets métalliques sont en contact avec les fils dénudés.

MISE EN GARDE! Il peut y avoir des risques d'incendie ou de choc électrique si le produit est en contact avec des points de tension dangereux ou si des objets métalliques sont en contact avec les fils dénudés.

set between 52°F (11°C) and 69°F (20°C). The maximum temperature can be set between 70°F (21°C) and 86°F (30°C).

- Press **MENU** when the parent unit is idle.
- Press **V** or **A** to choose **Temperature**, then press **SELECT**.
- Press **V** or **A** to choose **Minimum or Maximum**, then press **SELECT**.
 - If you have two baby units, the system prompts you to choose the desired baby unit or all baby units, press **V** or **A** to choose **ALL CAM** or **CAM #**, then press **SELECT**.
- Press **V** or **A** to choose the desired minimum or maximum temperature, then press **SELECT** to confirm your selection.

Temperature alert tone

You can turn on the temperature alert tone so that the parent unit will emit an alert tone if the detected temperature is out of range.

- Press **MENU** when the parent unit is idle.
- Press **V** or **A** to choose **Temperature**, then press **SELECT**.
- Press **V** or **A** to choose **Alert Tone**, then press **SELECT**.
 - If you have two baby units, the system prompts you to choose the desired baby unit or all baby units, press **V** or **A** to choose **ALL CAM** or **CAM #**, then press **SELECT**.
- Press **V** or **A** to choose **On** or **Off**, then press **SELECT** to confirm your selection.

Temperature format
You can choose to display the temperature in Fahrenheit (°F) or Celsius (°C).

- Press **MENU** when the parent unit is idle.
- Press **V** or **A** to choose **Temperature**, then press **SELECT**.
- Press **V** or **A** to choose **Format**, then press **SELECT**.
- Press **V** or **A** to choose **F** or **C**, then press **SELECT** to confirm your selection.

Temperature range

You can set the desired room temperature alert range. The minimum temperature can be activated while charging.

Even if the parent unit is paired to baby units, the CECC battery charging testing mode is activated while it is powered off and charging.

CONSERVEZ CES INSTRUCTIONS

Mises en garde

- Utilisez et entreposez le produit à une température entre 0°C (32°F) et 40°C (104°F).
- Exposez pas cet appareil à des frottes ou des chutes extrêmes, ainsi qu'à la lumière directe du soleil. Ne l'installez pas près d'une source de chauffage.
- Le bloc-piles ne doit pas être exposé à un chaleur excessive telle que la lumière du soleil ou au feu, murailles ni les rallonges électriques.
- Ne placez pas cet appareil sur un chiffon, meuble, tapis, support de montage ni table chancelante, de l'enfant ou du bébé, pour éviter tout risque de strangulation.
- Ne jamais placer le moniteur à l'intérieur du berceau ou du parc de bébé. Ne jamais couvrir ou empêcher pas la fixation adhésive de l'appareil en le plaçant sur un lit, divan, tapis ou toute autre surface similaire. De même, ne le positionnez pas à proximité ni au-dessus d'une source de chaleur ou d'un calorifère. De plus, ne placez pas l'appareil dans un endroit avant de vous assurer qu'il y a une bonne circulation d'air.

MISE EN GARDE! Il peut y avoir des risques d'incendie ou de choc électrique si le produit est en contact avec des points de tension dangereux ou si des objets métalliques sont en contact avec les fils dénudés.

MISE EN GARDE! Il peut y avoir des risques d'incendie ou de choc électrique si le produit est en contact avec des points de tension dangereux ou si des objets métalliques sont en contact avec les fils dénudés.

MISE EN GARDE! Il peut y avoir des risques d'incendie ou de choc électrique si le produit est en contact avec des points de tension dangereux ou si des objets métalliques sont en contact avec les fils dénudés.

MISE EN GARDE! Il peut y avoir des risques d'incendie ou de choc électrique si le produit est en contact avec des points de tension dangereux ou si des objets métalliques sont en contact avec les fils dénudés.

MISE EN GARDE! Il peut y avoir des risques d'incendie ou de choc électrique si le produit est en contact avec des points de tension dangereux ou si des objets métalliques sont en contact avec les fils dénudés.

Remove the baby units

You can rename each baby unit. Once the baby unit is renamed, its new name together with the baby unit number will appear in the sub-menu of below options:

- Sensitivity
 - Rename
 - Temperature
- Press **MENU** when the parent unit is idle.
 - Press **V** or **A** to choose **Rename**, then press **SELECT**.
 - Press **V** or **A** to choose the desired baby unit, then press **SELECT**.
 - Press **V** or **A** to choose the desired name for the baby unit, then press **SELECT** to confirm your selection.

Night vision

The baby unit has infrared LEDs that allow you to see your baby clearly at night or in a dark room. When the baby unit being viewed detects low light levels, the infrared LEDs are switched on automatically. The image from this baby unit is in black and white, and appears on screen.

NOTES
• It is normal if you see a short white glare on your parent unit screen as the baby unit is adapting to the dark environment.

- Press **V** or **A** to choose **Temperature**, then press **SELECT**.
- Press **V** or **A** to choose **Alert Tone**, then press **SELECT**.
 - If you have two baby units, the system prompts you to choose the desired baby unit or all baby units, press **V** or **A** to choose **ALL CAM** or **CAM #**, then press **SELECT**.
- Press **V** or **A** to choose **On** or **Off**, then press **SELECT** to confirm your selection.

• Depending on the surroundings and other interfering factors, like lighting, objects, colors and backgrounds, the display resolution may vary. The image may be blurry or less secure at a higher level to prevent glare and blurry display.

Temperature range

You can set the desired room temperature alert range. The minimum temperature can be activated while charging.

Even if the parent unit is paired to baby units, the CECC battery charging testing mode is activated while it is powered off and charging.

CONSERVEZ CES INSTRUCTIONS

Mises en garde

- Utilisez et entreposez le produit à une température entre 0°C (32°F) et 40°C (104°F).
- Exposez pas cet appareil à des frottes ou des chutes extrêmes, ainsi qu'à la lumière directe du soleil. Ne l'installez pas près d'une source de chauffage.
- Le bloc-piles ne doit pas être exposé à un chaleur excessive telle que la lumière du soleil ou au feu, murailles ni les rallonges électriques.
- Ne placez pas cet appareil sur un chiffon, meuble, tapis, support de montage ni table chancelante, de l'enfant ou du bébé, pour éviter tout risque de strangulation.
- Ne jamais placer le moniteur à l'intérieur du berceau ou du parc de bébé. Ne jamais couvrir ou empêcher pas la fixation adhésive de l'appareil en le plaçant sur un lit, divan, tapis ou toute autre surface similaire. De même, ne le positionnez pas à proximité ni au-dessus d'une source de chaleur ou d'un calorifère. De plus, ne placez pas l'appareil dans un endroit avant de vous assurer qu'il y a une bonne circulation d'air.

MISE EN GARDE! Il peut y avoir des risques d'incendie ou de choc électrique si le produit est en contact avec des points de tension dangereux ou si des objets métalliques sont en contact avec les fils dénudés.

MISE EN GARDE! Il peut y avoir des risques d'incendie ou de choc électrique si le produit est en contact avec des points de tension dangereux ou si des objets métalliques sont en contact avec les fils dénudés.

MISE EN GARDE! Il peut y avoir des risques d'incendie ou de choc électrique si le produit est en contact avec des points de tension dangereux ou si des objets métalliques sont en contact avec les fils dénudés.

MISE EN GARDE! Il peut y avoir des risques d'incendie ou de choc électrique si le produit est en contact avec des points de tension dangereux ou si des objets métalliques sont en contact avec les fils dénudés.

MISE EN GARDE! Il peut y avoir des risques d'incendie ou de choc électrique si le produit est en contact avec des points de tension dangereux ou si des objets métalliques sont en contact avec les fils dénudés.

MISE EN GARDE! Il peut y avoir des risques d'incendie ou de choc électrique si le produit est en contact avec des points de tension dangereux ou si des objets métalliques sont en contact avec les fils dénudés.

MISE EN GARDE! Il peut y avoir des risques d'incendie ou de choc électrique si le produit est en contact avec des points de tension dangereux ou si des objets métalliques sont en contact avec les fils dénudés.

MISE EN GARDE! Il peut y avoir des risques d'incendie ou de choc électrique si le produit est en contact avec des points de tension dangereux ou si des objets métalliques sont en contact avec les fils dénudés.

MISE EN GARDE! Il peut y avoir des risques d'incendie ou de choc électrique si le produit est en contact avec des points de tension dangereux ou si des objets métalliques sont en contact avec les fils dénudés.

MISE EN GARDE! Il peut y avoir des risques d'incendie ou de choc électrique si le produit est en contact avec des points de tension dangereux ou si des objets métalliques sont en contact avec les fils dénudés.

General product care

To keep this product working well and looking good, follow these guidelines:

- Avoid putting it near heating appliances and devices that generate electrical noise (for example, motors or incandescent lamps).
- DO NOT expose it to direct sunlight or moisture.
- Avoid dropping the product or treating it roughly.
- Clean with a soft cloth.
- DO NOT use the parent unit and the baby unit in water and do not clean them under the tap.
- DO NOT use cleaning spray or liquid cleaners.
- Make sure the baby unit and parent unit are dry before you connect them to the mains again.

Storage

When you are not going to use the baby monitor for some time, remove the rechargeable battery from the parent unit. Store the parent unit, the baby unit and the adapters in a cool and dry place.

Frequently asked questions

Below are the questions most frequently asked about the baby monitor. If you cannot find the answer to your question, please contact us at info@vtechelectronics.com or contact 1 (800) 956-9811 for customer service.

Why does the baby monitor display a blurry image normally?

- Try the following (in the order listed) for common cause:
 - 1. Disconnect the baby units from the parent unit. Then install the batteries again.
 - 2. Wait a few seconds before reconnecting power back to the baby units and the parent unit.
 - 3. Turn on the baby units and the parent unit.
 - 4. Wait for the parent unit to synchronize with the baby units. Allow up to one minute for this to take place.

Why does the parent unit display a blurry image when I turn on the parent unit?

- Try the following (in the order listed) for common cause:
 - 1. Disconnect the baby units from the parent unit. Then install the batteries again.
 - 2. Wait a few seconds before reconnecting power back to the baby units and the parent unit.
 - 3. Turn on the baby units and the parent unit.
 - 4. Wait for the parent unit to synchronize with the baby units. Allow up to one minute for this to take place.

Why does the parent unit display a blurry image when I turn on the parent unit?

- Try the following (in the order listed) for common cause:
 - 1. Disconnect the baby units from the parent unit. Then install the batteries again.
 - 2. Wait a few seconds before reconnecting power back to the baby units and the parent unit.
 - 3. Turn on the baby units and the parent unit.
 - 4. Wait for the parent unit to synchronize with the baby units. Allow up to one minute for this to take place.

Why does the parent unit display a blurry image when I turn on the parent unit?

- Try the following (in the order listed) for common cause:
 - 1. Disconnect the baby units from the parent unit. Then install the batteries again.
 - 2. Wait a few seconds before reconnecting power back to the baby units and the parent unit.
 - 3. Turn on the baby units and the parent unit.
 - 4. Wait for the parent unit to synchronize with the baby units. Allow up to one minute for this to take place.

Why does the parent unit display a blurry image when I turn on the parent unit?

- Try the following (in the order listed) for common cause:
 - 1. Disconnect the baby units from the parent unit. Then install the batteries again.
 - 2. Wait a few seconds before reconnecting power back to the baby units and the parent unit.
 - 3. Turn on the baby units and the parent unit.
 - 4. Wait for the parent unit to synchronize with the baby units. Allow up to one minute for this to take place.

Why does the parent unit display a blurry image when I turn on the parent unit?

- Try the following (in the order listed) for common cause:
 - 1. Disconnect the baby units from the parent unit. Then install the batteries again.
 - 2. Wait a few seconds before reconnecting power back to the baby units and the parent unit.
 - 3. Turn on the baby units and the parent unit.
 - 4. Wait for the parent unit to synchronize with the baby units. Allow up to one minute for this to take place.

Why does the power-on light of the parent unit blink?

- Perhaps the parent unit is not connected to the mains. Insert the appliance cord into the parent baby unit and put the adapter in a wall outlet. Then press **VIEW** on the parent unit when it is switched on when I switch on the units?
- Perhaps the parent unit is not connected to the mains. Insert the appliance cord into the parent baby unit and put the adapter in a wall outlet. Then press **VIEW** on the parent unit when it is switched on when I switch on the units?

Why doesn't my parent unit charge while I'm using it?

- Make sure the battery is correctly installed in your parent unit.
- You may have used the battery for a long time. Replace a new battery.
- The screen is black and white during nighttime or in a dark room. This is normal due to external light intrusion.

Why do I get glare or blurry display when I view my parent unit screen?

- Depending on the surroundings and other interfering factors, like lightings, objects, colors and backgrounds, the display resolution may vary. The image may be blurry or less secure at a higher level to prevent glare and blurry display.
- Depending on the surroundings and other interfering factors, like lightings, objects, colors and backgrounds, the display resolution may vary. The image may be blurry or less secure at a higher level to prevent glare and blurry display.

Why does the parent unit display a blurry image when I turn on the parent unit?

- Perhaps the parent unit is not connected to the mains. Insert the appliance cord into the parent baby unit and put the adapter in a wall outlet. Then press **VIEW** on the parent unit when it is switched on when I switch on the units?
- Perhaps the parent unit is not connected to the mains. Insert the appliance cord into the parent baby unit and put the adapter in a wall outlet. Then press **VIEW** on the parent unit when it is switched on when I switch on the units?

Why doesn't my parent unit charge while I'm using it?

- Make sure the battery is correctly installed in your parent unit.
- You may have used the battery for a long time. Replace a new battery.
- The screen is black and white during nighttime or in a dark room. This is normal due to external light intrusion.

Why do I get glare or blurry display when I view my parent unit screen?

- Depending on the surroundings and other interfering factors, like lightings, objects, colors and backgrounds, the display resolution may vary. The image may be blurry or less secure at a higher level to prevent glare and blurry display.
- Depending on the surroundings and other interfering factors, like lightings, objects, colors and backgrounds, the display resolution may vary. The image may be blurry or less secure at a higher level to prevent glare and blurry display.

Why does the parent unit display a blurry image when I turn on the parent unit?

- Perhaps the parent unit is not connected to the mains. Insert the appliance cord into the parent baby unit and put the adapter in a wall outlet. Then press **VIEW** on the parent unit when it is switched on when I switch on the units?
- Perhaps the parent unit is not connected to the mains. Insert the appliance cord into the parent baby unit and put the adapter in a wall outlet. Then press **VIEW** on the parent unit when it is switched on when I switch on the units?

Why doesn't my parent unit charge while I'm using it?

- Make sure the battery is correctly installed in your parent unit.
- You may have used the battery for a long time. Replace a new battery.
- The screen is black and white during nighttime or in a dark room. This is normal due to external light intrusion.

Why does the parent unit display a blurry image when I turn on the parent unit?

- Perhaps the parent unit is not connected to the mains. Insert the appliance cord into the parent baby unit and put the adapter in a wall outlet. Then press **VIEW** on the parent unit when it is switched on when I switch on the units?
- Perhaps the parent unit is not connected to the mains. Insert the appliance cord into the parent baby unit and put the adapter in a wall outlet. Then press **VIEW** on the parent unit when it is switched on when I switch on the units?