

14.3 SAR test plots for repeated test

WLAN 11b 1Mbps Front 2462MHz

Communication System: UID 0, WLAN 11a/b/g/n (0); Communication System Band: 11b/g/n (2.4G);

Frequency: 2462 MHz; Duty Cycle: 1:1

Medium parameters used (interpolated): $f = 2462$ MHz; $\sigma = 1.879$ S/m; $\epsilon_r = 52.009$; $\rho = 1000$ kg/m³

Phantom section: Flat Section

Measurement Standard: DASYS (IEEE/IEC/ANSI C63.19-2007)

DASY5 Configuration

Probe: EX3DV4 - SN3825; ConvF(7.23, 7.23, 7.23); Calibrated: 2013/12/13;

Sensor-Surface: 2mm (Mechanical Surface Detection)

Electronics: DAE4 Sn509; Calibrated: 2013/07/16

Phantom: ELI 4.0; Type: QDOVA001BA

Measurement SW: DASYS2, Version 52.8 (7); SEMCAD X Version 14.6.10 (7164)

Area Scan (61x101x1): Interpolated grid: dx=1.200 mm, dy=1.200 mm

Maximum value of SAR (interpolated) = 1.63 W/kg

Zoom Scan (7x7x7)/Cube 0: Measurement grid: dx=5mm, dy=5mm, dz=5mm

Reference Value = 29.891 V/m; Power Drift = -0.04 dB

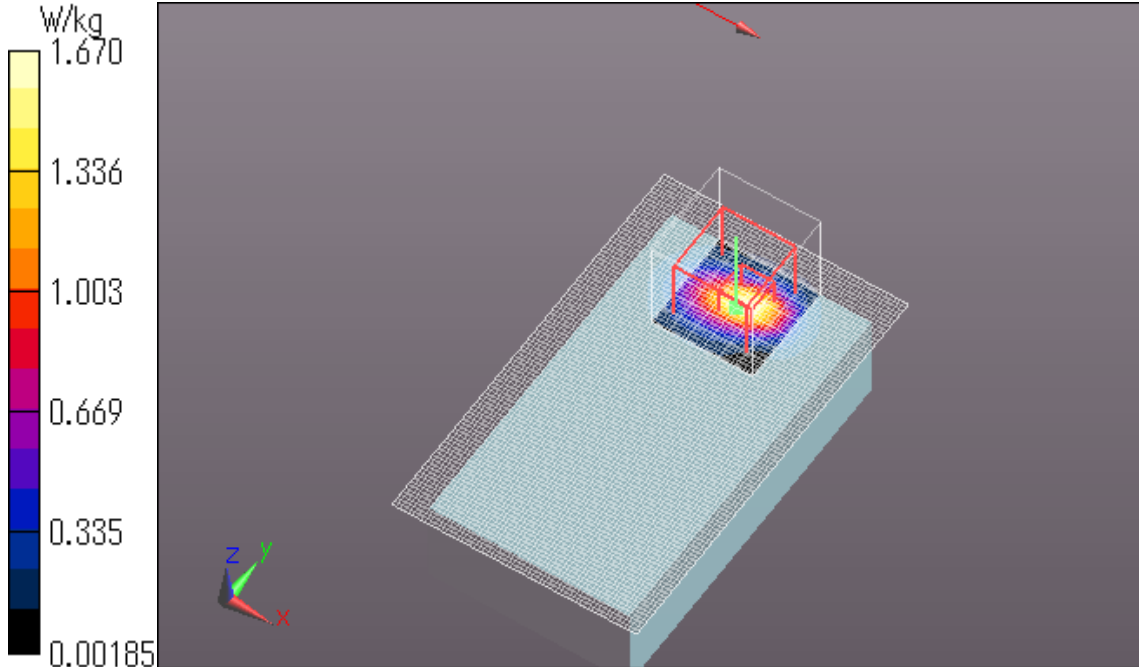
Peak SAR (extrapolated) = 2.85 W/kg

SAR(1 g) = 1.02 W/kg; SAR(10 g) = 0.357 W/kg

Maximum value of SAR (measured) = 1.67 W/kg

Date: 2014/03/27

Ambient Temp. : 24.0 degree.C. Liquid Temp.; 23.5 degree.C.



Plot No.1