

7. Wavit11 Set Up

- 1. Start Wavit11 Configuration Utility.
- 2. Set the Wavit11 in accordance with a communication mode.



“How to Start the Wavit11 Configuration Utility” page34



“How to setup the Ad-Hoc mode” page38



“How to Setup the 802.11 Ad-Hoc mode” page41



“How to Setup the Infrastructure mode” page44



“How to Setup the AP mode” page51



“How to Setup the Wireless Bridge Mode” page57

7.1. How to Start the Wavit11 Configuration Utility

[STEP1] Connect Wavit11 and personal computer using the straight cable.

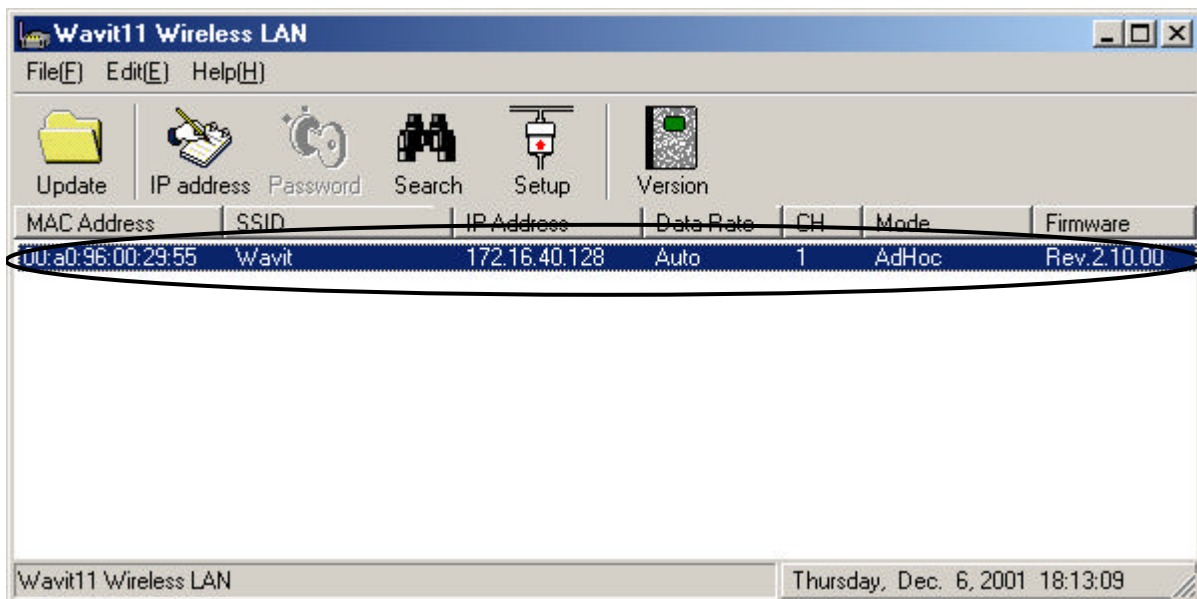
[STEP2] Connect DC plug of AC adapter to Wavit11 DC IN jack.

[STEP3] Connect AC adapter to AC outlet.

[STEP4] Click the “Wavit11 Configuration Utility” icon.



[STEP5] “Wavit11 Wireless LAN” window appears. The information of Wavit11 that is connected to this personal computer is displayed in the station list in the “Wavit11 Wireless LAN” window.



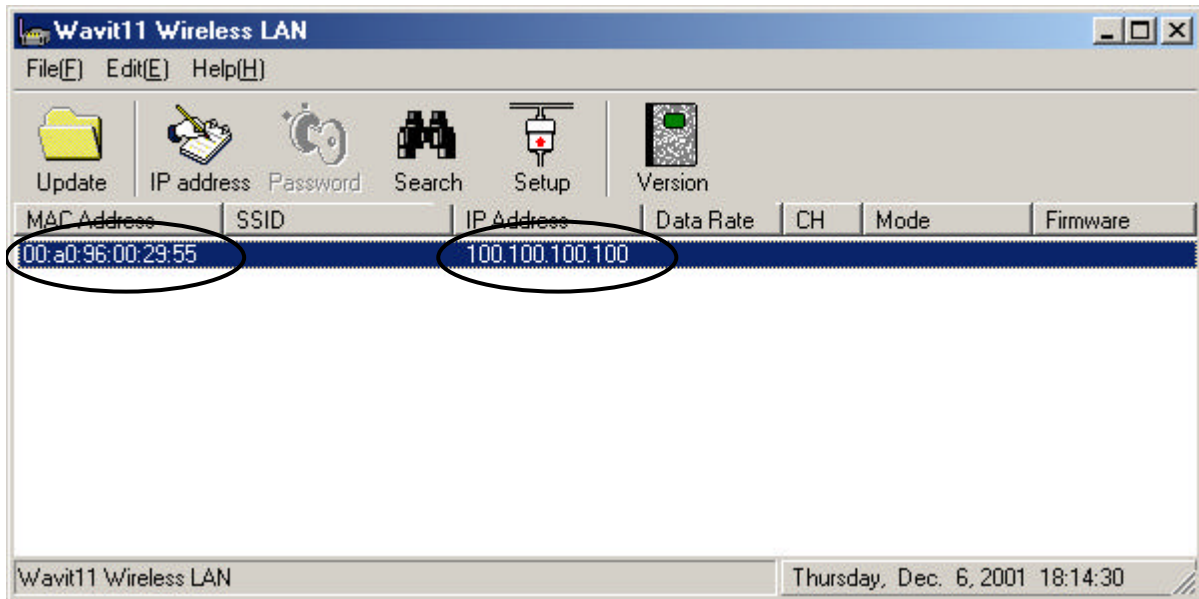


In the case that only "MAC Address" and "IP Address" are displayed in the station list in the "Wavit11 Wireless LAN" window, you cannot set up the Wavit11. Modify the IP address of Wavit11.



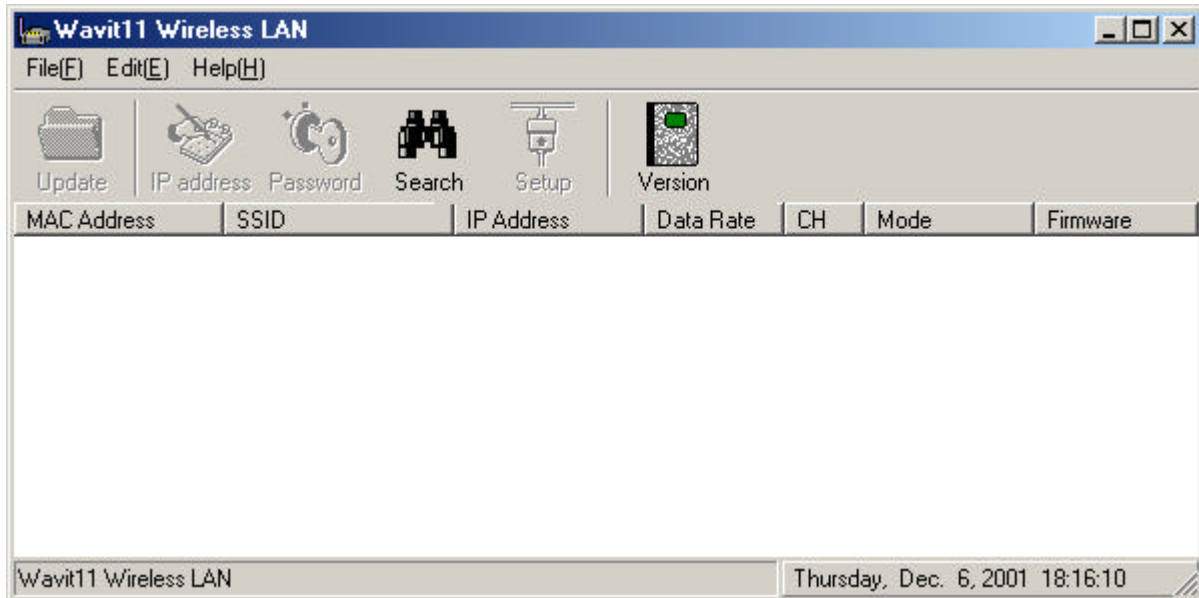
“How to Change the Wavit11 IP address”

page59





In the case that nothing is displayed to the station list of the "Wavit11 Wireless LAN" window, you cannot set up the Wavit11.



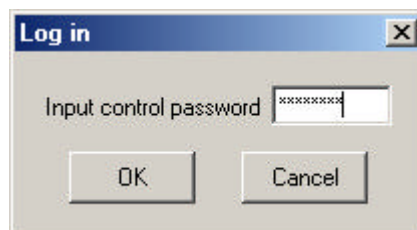
Confirm the following.

1. Connection between the Wavit11 and your personal computer
2. Connection between the Wavit11 and the AC adapter
3. Connection between the AC adapter and the AC outlet
4. TCP/IP setting of your personal computer

[STEP6] Click “Setup” in the “Wavit11 Wireless LAN” window.



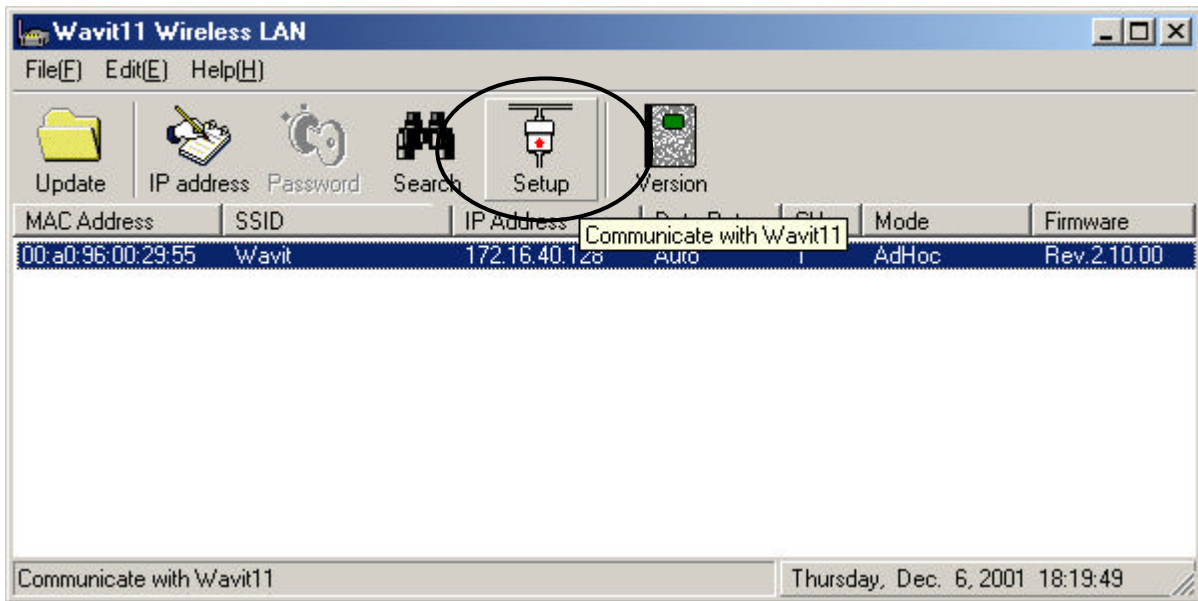
If the operational mode is “AP” or “Wireless Bridge”:
 The “Log in” window will appear after clicking the “Setup” button.
 Input control password.
 The default control password is “password”.



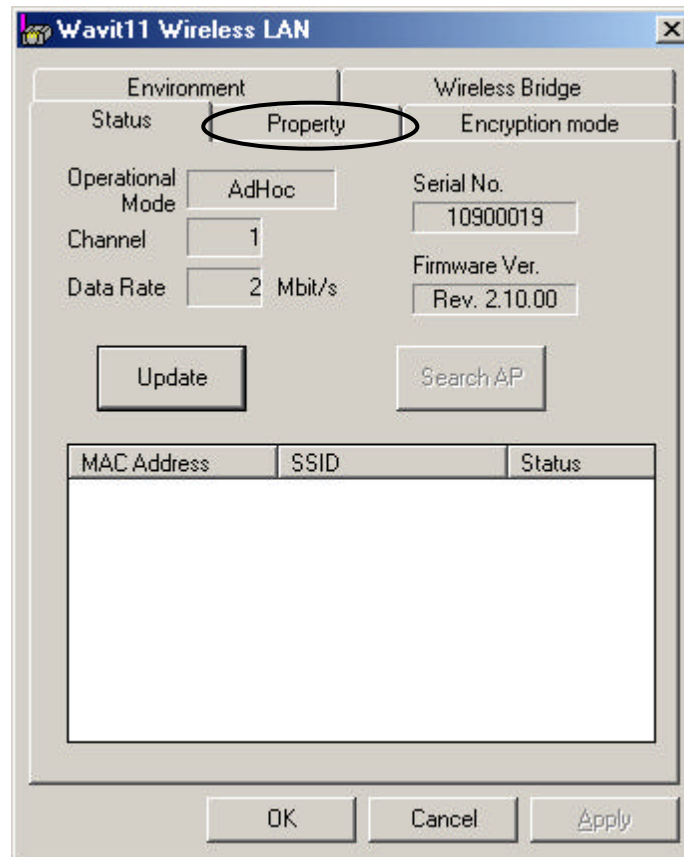
Initialize Wavit11 when you have forgotten the control password.
 “Wavit11 Initialization” page63

7.2. How to setup the Ad-Hoc mode

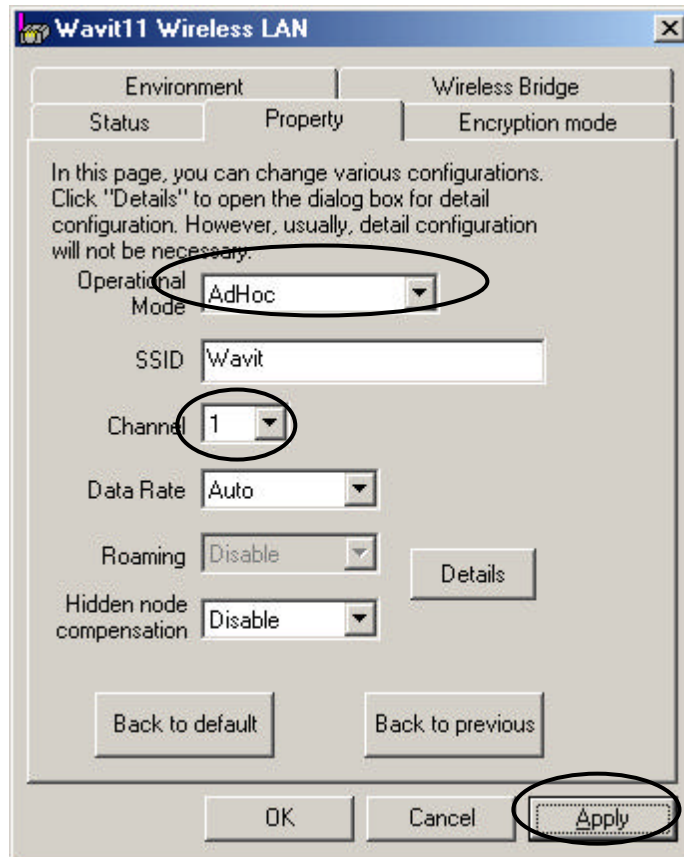
[STEP1] Click the “Setup” in the “Wavit11 Wireless LAN” window.



[STEP2] Click the “Property” page.

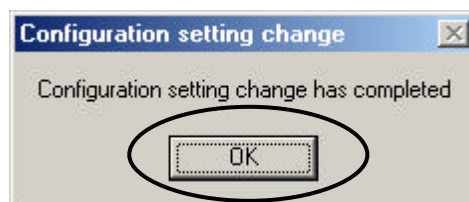


[STEP3] At the “Property” page, change the Operational Mode to “Ad-Hoc”, select the Channel and then click the “Apply” button.

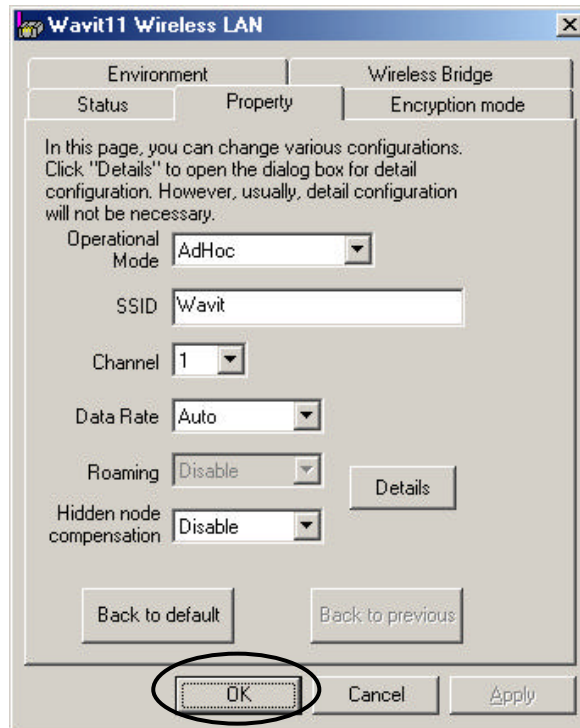


The Channel should be same on all Wavit11 in Ad-Hoc mode. The Wavit11 that has different Channel cannot communicate each other.

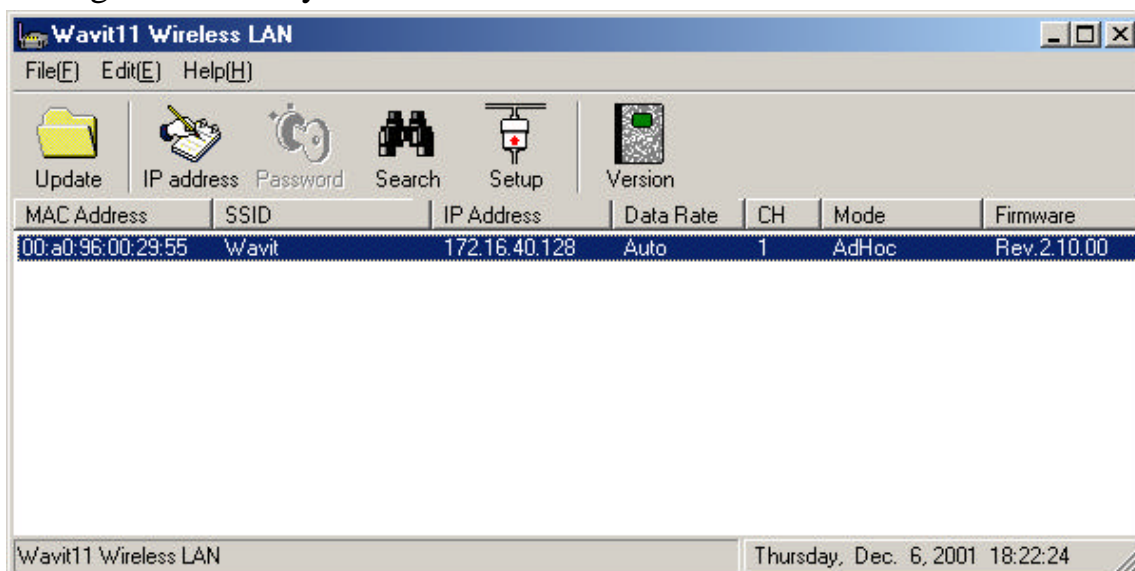
[STEP4] Click the “OK” button.



[STEP5] In the “Status” page, check that the Operational Mode is set to “Ad-Hoc” and the Channel is set correctly as you selected, and then click the “OK” button.



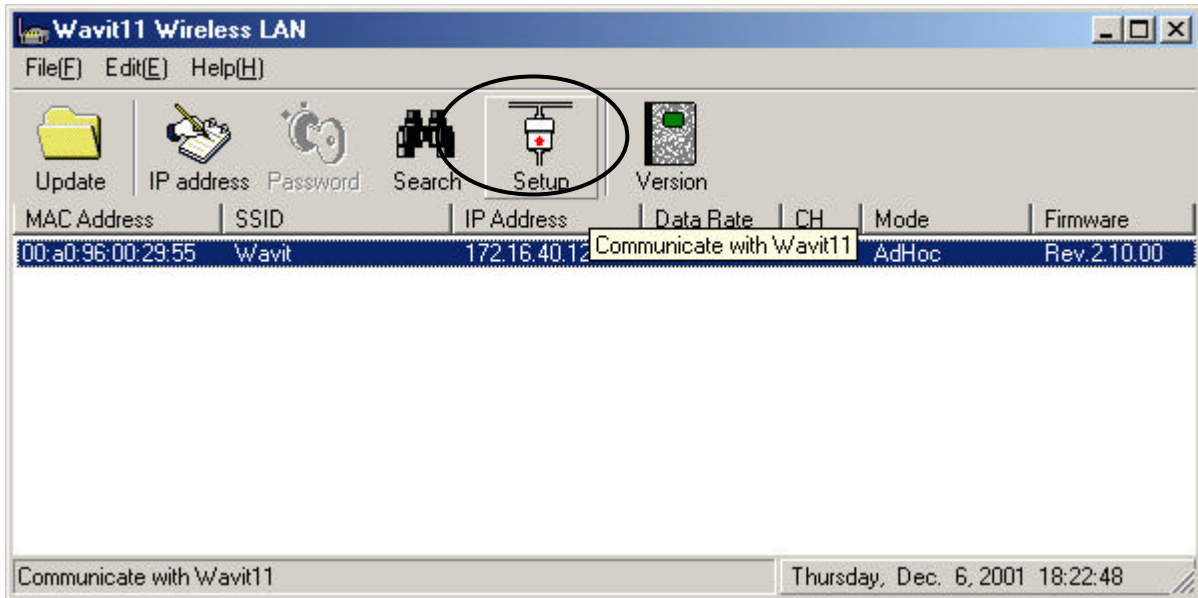
[STEP6] After returning to the “Wavit11 Wireless LAN” window, check that all setups you selected are reflected correctly, and then end the “Wavit11 Configuration Utility”.



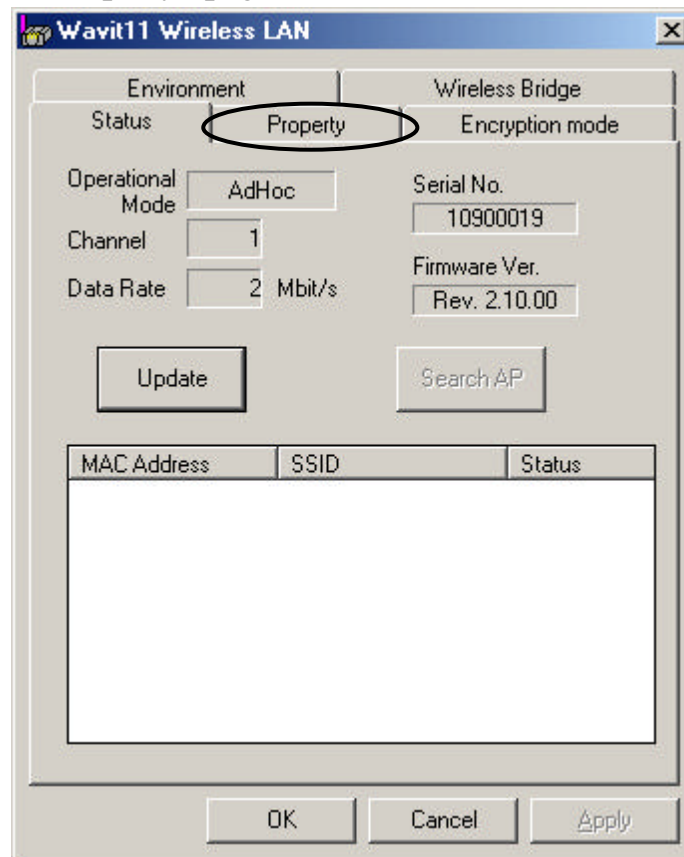
When your selection is not reflected, click the "Search".

7.3. How to Setup the 802.11 Ad-Hoc mode

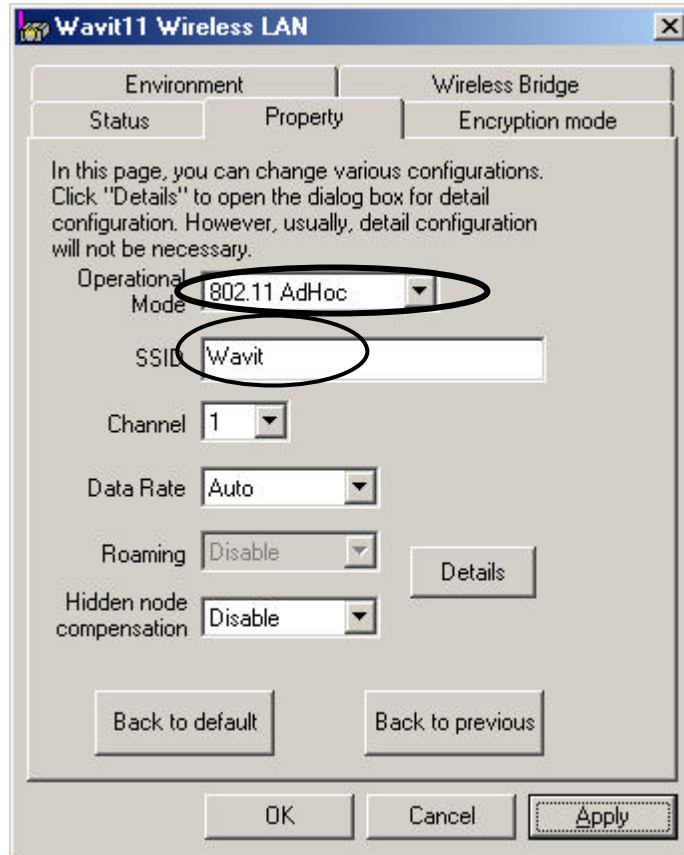
[STEP1] Click the “Setup” in the “Wavit11 Wireless LAN” window.



[STEP2] Click the “Property” page.

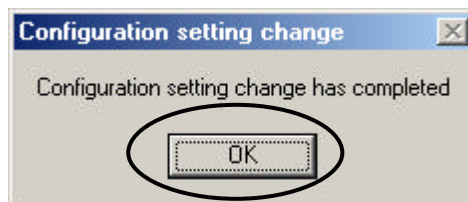


[STEP3] At the “Property” page, change the Operational Mode to “802.11 Ad-Hoc” and set the “SSID”, and then click the “Apply” button.

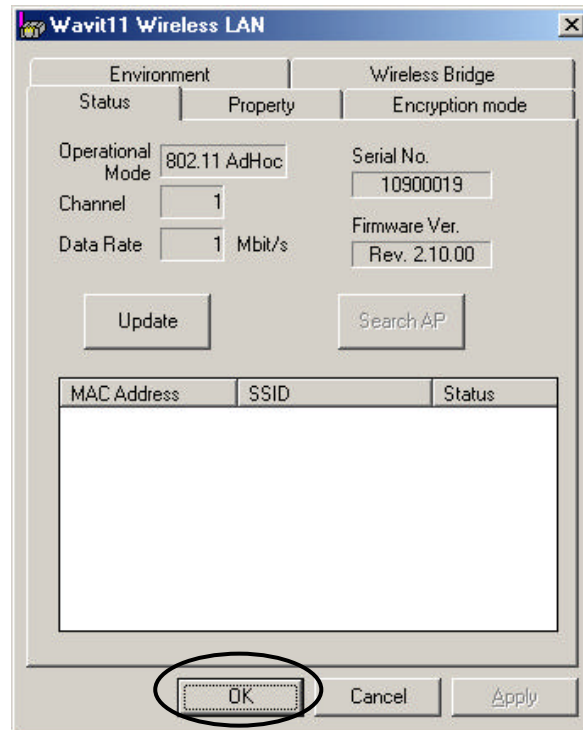


Set the SSID in 802.11 Ad-Hoc mode.
Wavit11 with different SSID cannot communicate each other.

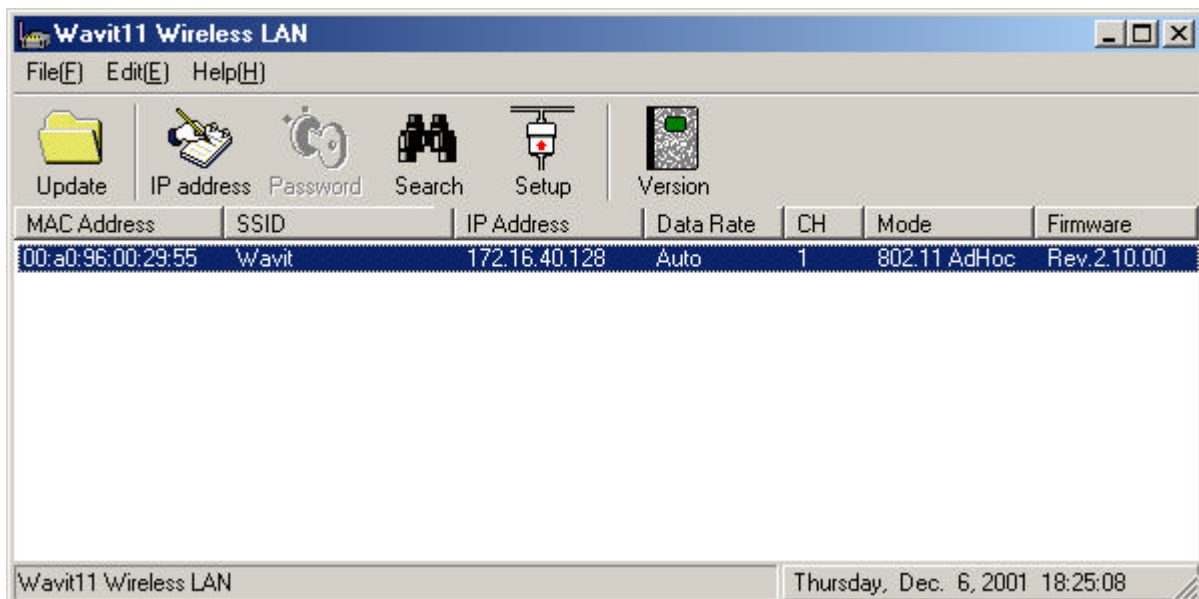
[STEP4] Click the “OK” button.



[STEP5] In the “Status” page, check that the Operational Mode is set to “802.11 Ad-Hoc” and the Channel is set correctly as you selected, and then click the “OK” button.



[STEP6] After returning to the “Wavit11 Wireless LAN” window, check that all setups you selected are reflected correctly and then end the “Wavit11 Configuration Utility”

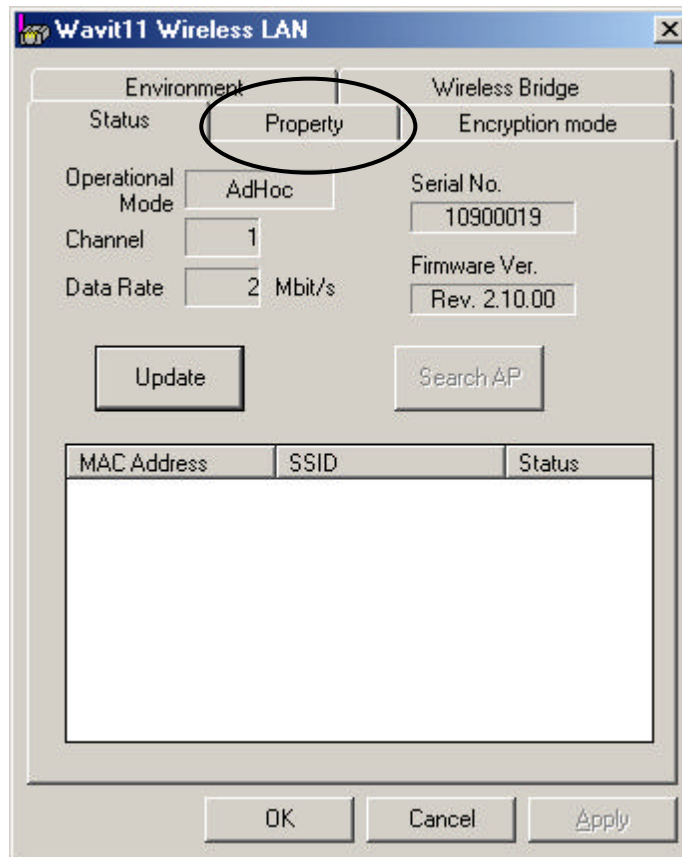


7.4. How to Setup the Infrastructure mode

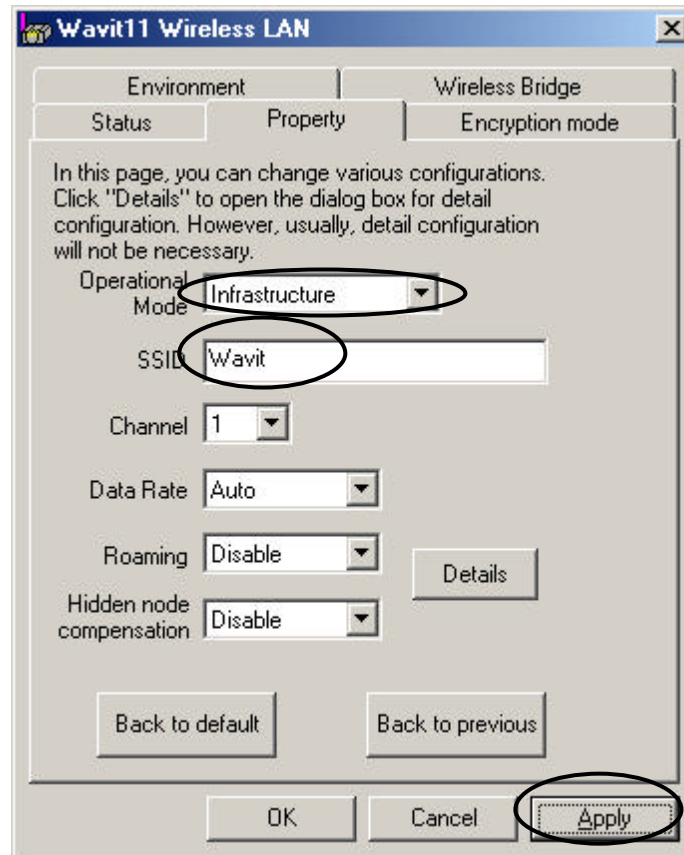
[STEP1] Click the “Setup” in the “Wavit11 Wireless LAN” window.



[STEP2] Click the “Property” page.

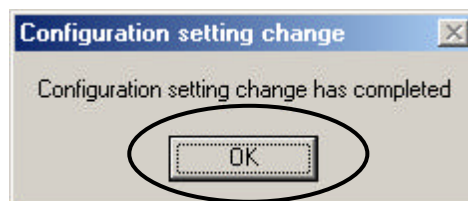


[STEP3] At the “Property” page, change the Operational Mode to “Infrastructure” mode and set the SSID, then click the ”Apply” button.

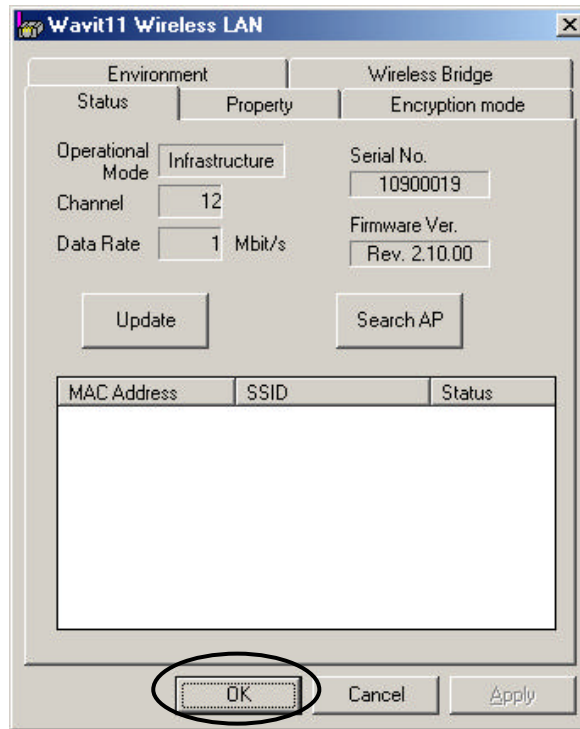


Set the SSID in Infrastructure mode.
This SSID must be same with that of Access Point.

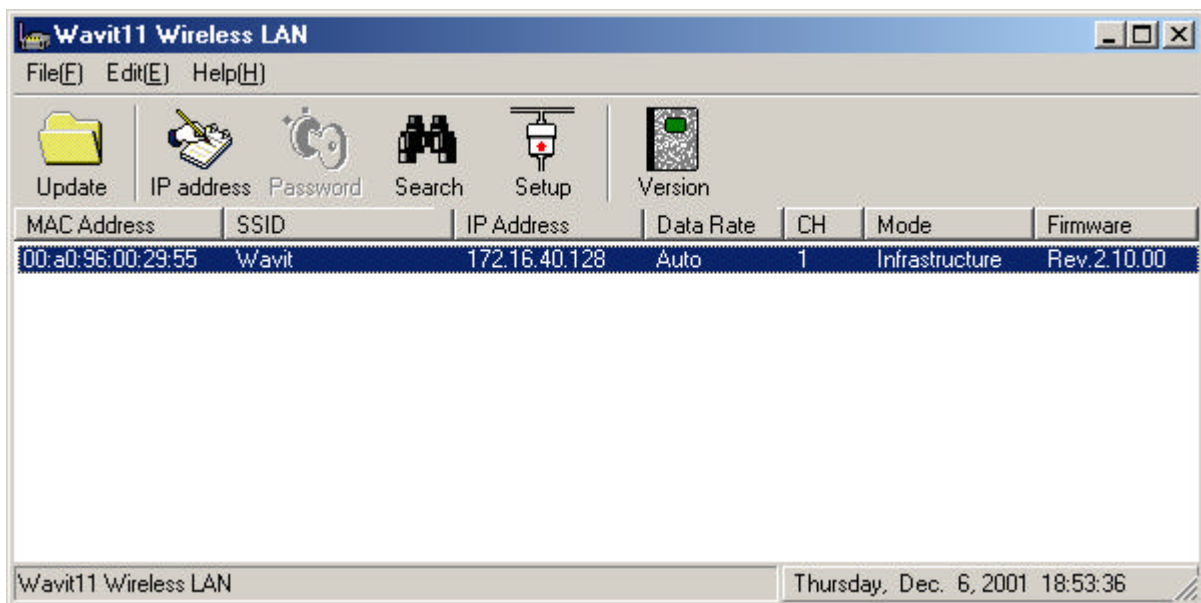
[STEP4] Click the “OK” button.



[STEP5] In the “Status” page, check that the Operational Mode is set to “Infrastructure”, and then click the “OK” button.

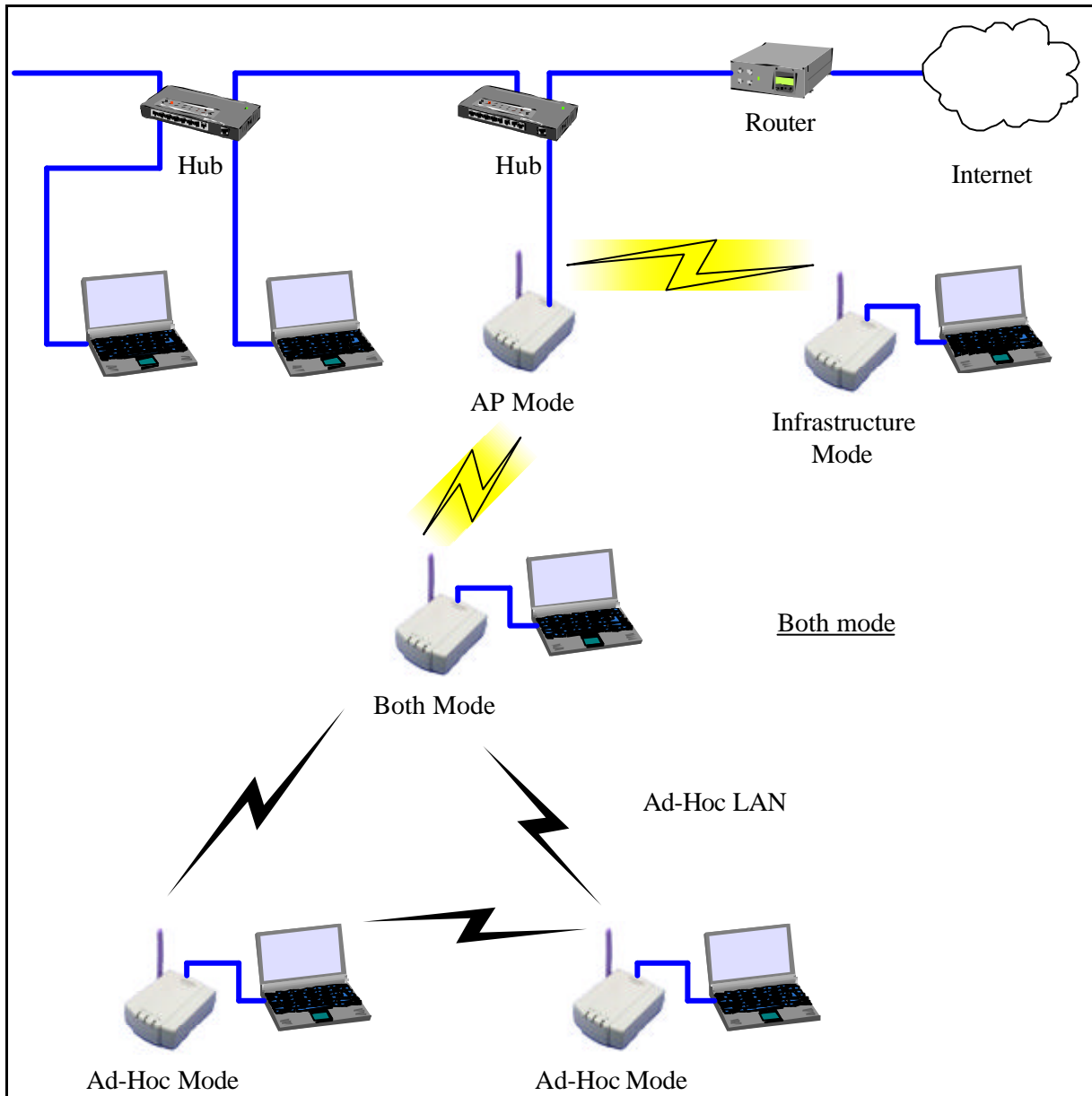


[STEP6] After returning to the “Wavit11 Wireless LAN” window, check that all setups you selected are reflected correctly and then end the “Wavit11 Configuration Utility.”



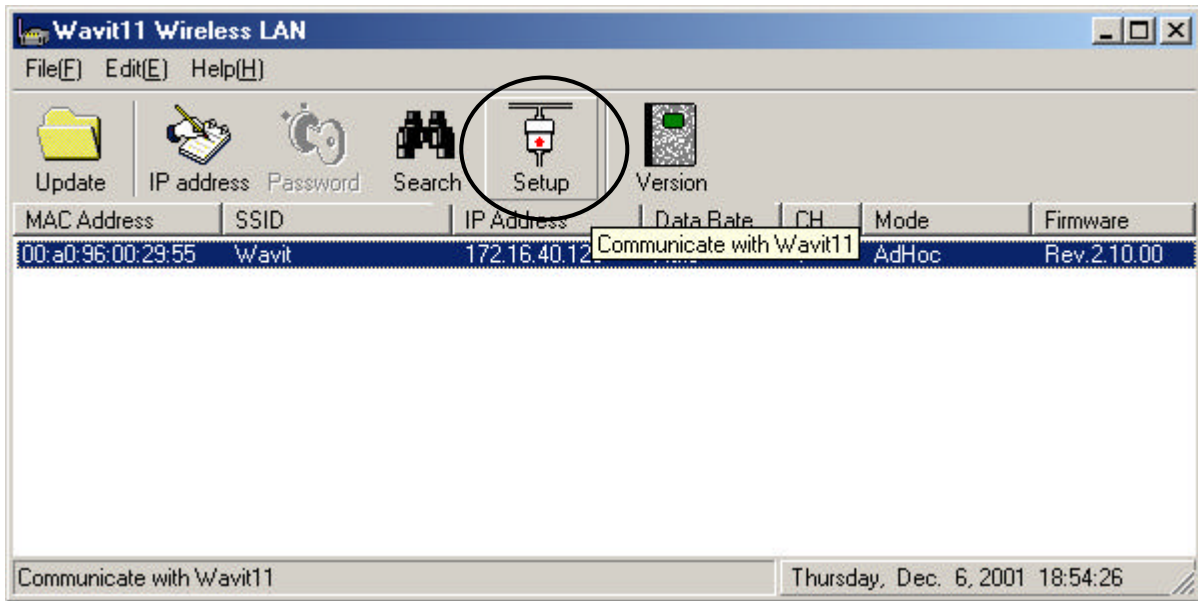
7.5. How to Setup the Both mode

If there is an Access Point, Wavit11 in Both mode is will operate as Wavit11 in Infrastructure mode. If there is no Access Point, Wavit11 in Both mode will operate as Wavit11 in Ad-Hoc mode.

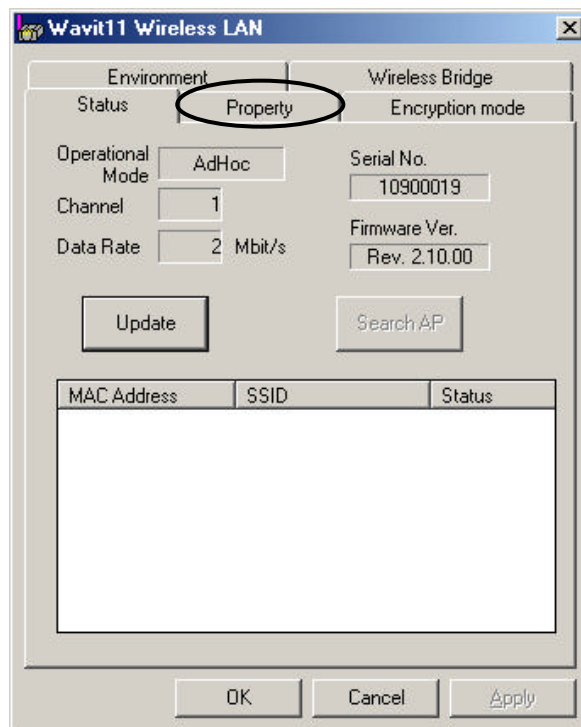


The Wavit11 in Both mode cannot operate both Infrastructure LAN and Ad-Hoc LAN simultaneity. The Wavit11 in Both mode decides whether there is an Access Point or not at the time of boot and then it decides whether it should connect to Access Point or join to Ad-Hoc LAN. To connect to Access Point after joining to Ad-Hoc LAN, it is necessary to reboot Wavit11.

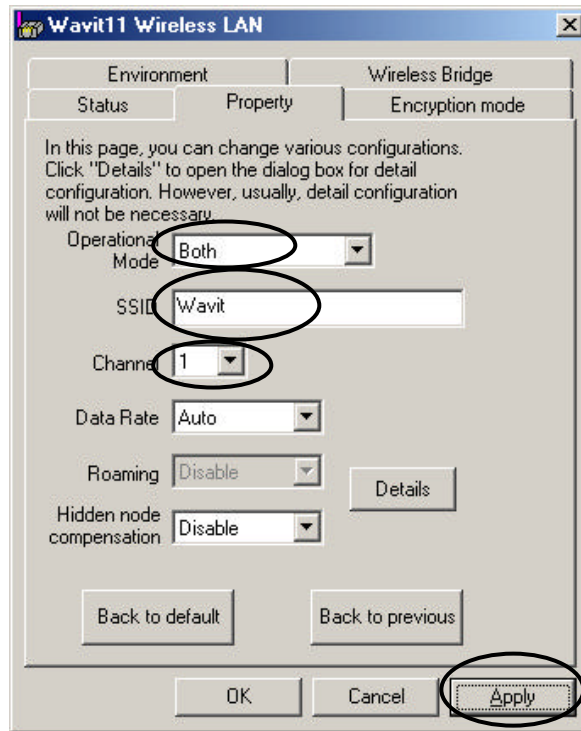
[STEP1] Click the “Setup” in the “Wavit11 Wireless LAN” window.



[STEP2] Click the “Property” page.

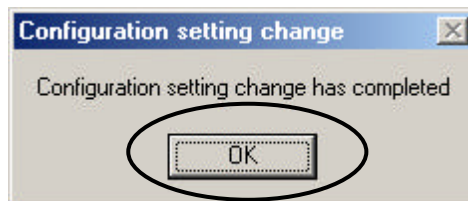


[STEP3] At the “Property” page, change the Operational mode to “Both”, set the SSID and select the Channel, and then click the “Apply” button.

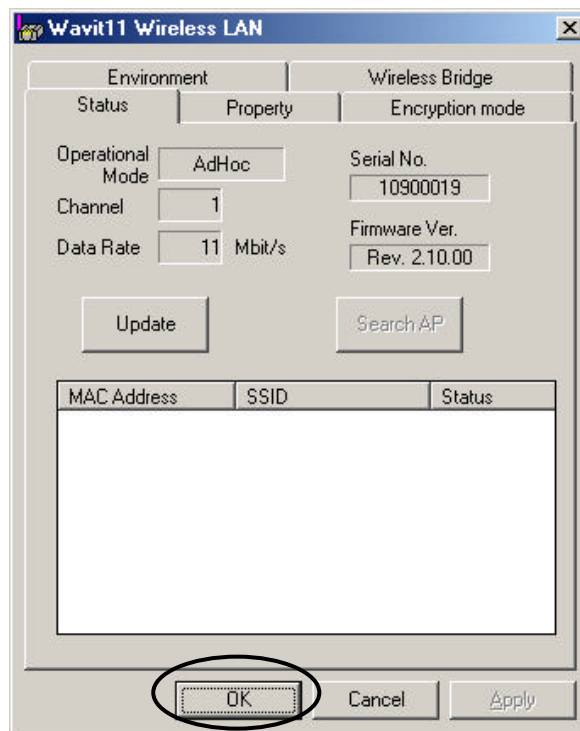


Set the SSID and select the Channel in Both mode.
This SSID must be the same as that of Access Point.

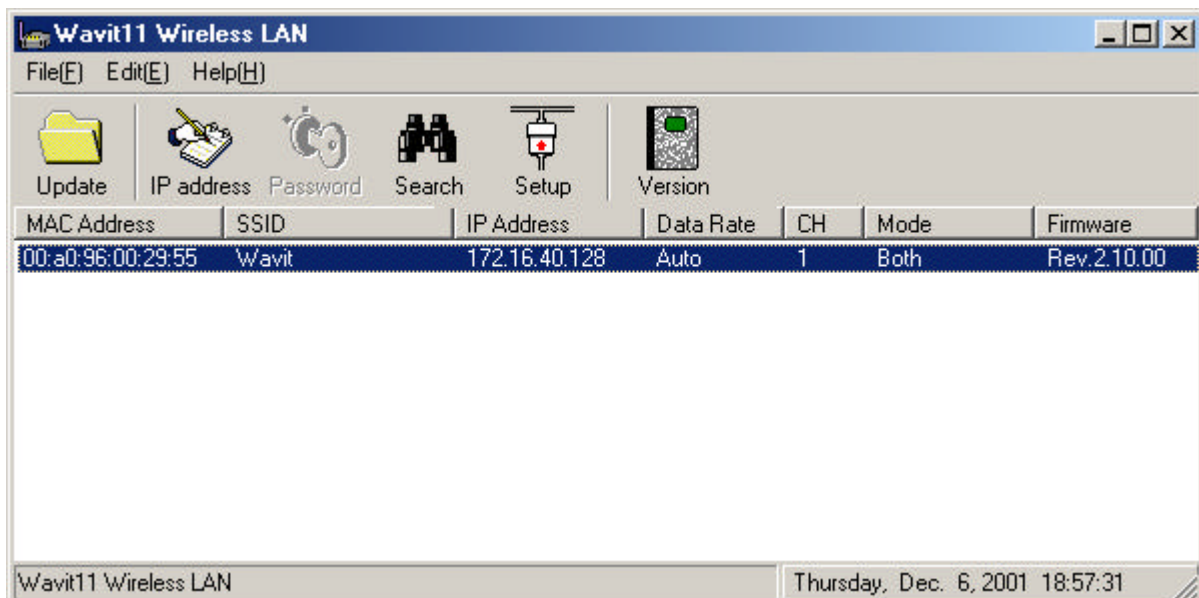
[STEP4] Click the “OK” button.



[STEP5] In the “Status” page, check that the Channel is set as you selected, and then click the “OK” button.



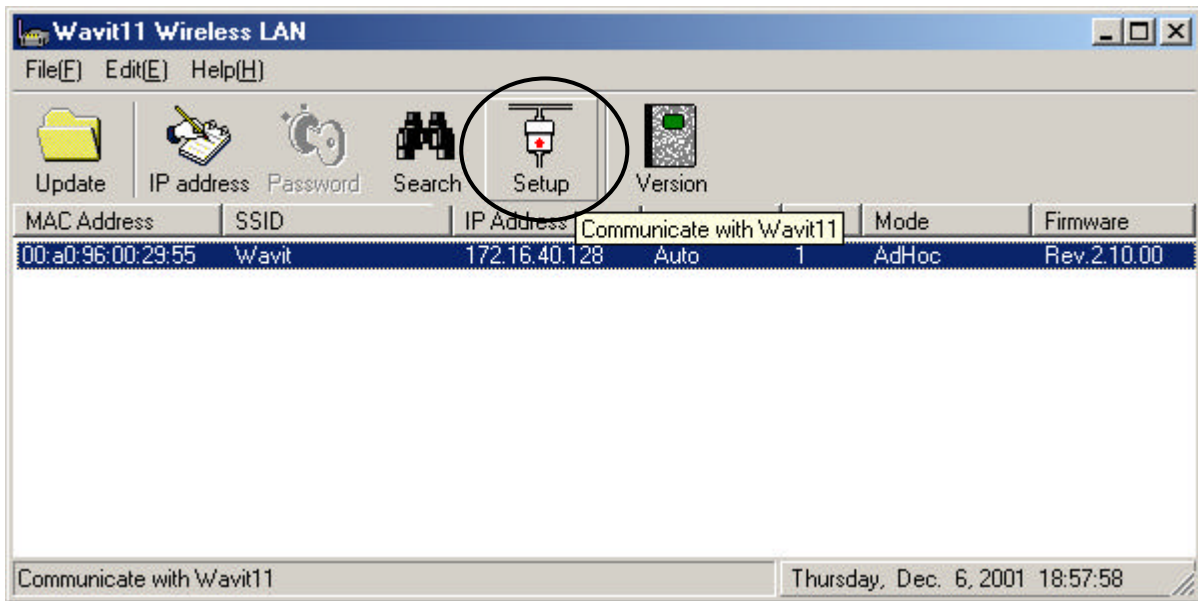
[STEP6] After returning to the “Wavit11 Wireless LAN” window, check that all setups you selected are reflected correctly, and then end the “Wavit11 Configuration Utility”.



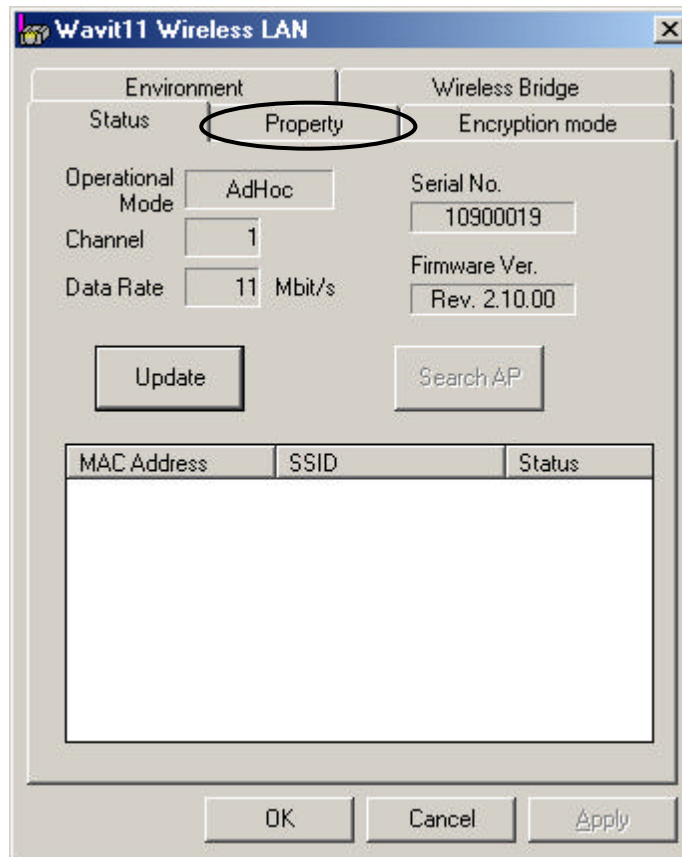
In the Both mode, there are cases where “Ad-Hoc” or “Infrastructure” is shown under Mode or Operational Mode.

7.6. How to Setup the AP mode

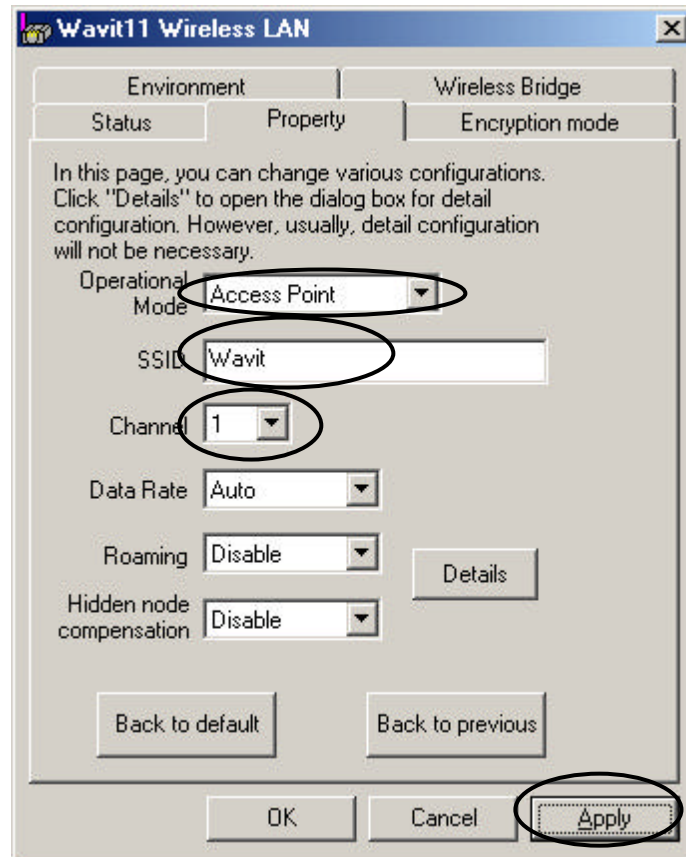
[STEP1] Click the “Setup” in the “Wavit11 Wireless LAN” window.



[STEP2] Click the “Property” page.

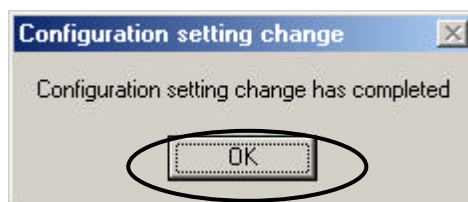


[STEP3] At the “Property” page, change the Operational Mode to “AP” mode and set the SSID and select the Channel, and then click the “Apply” button.

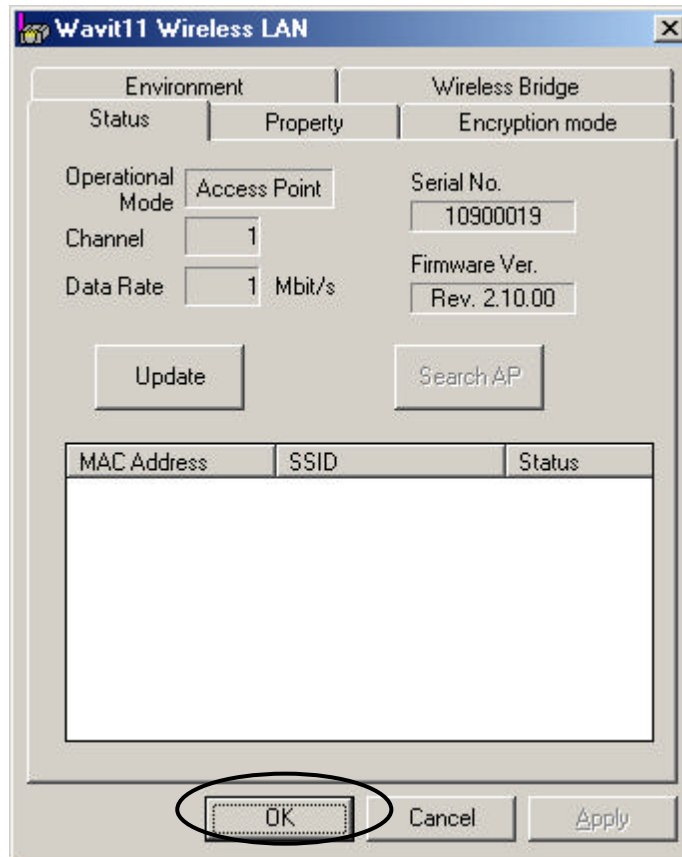


Set the SSID and select the Channel in AP mode.
This SSID must be the same as that of Wavit11 in Infrastructure mode.

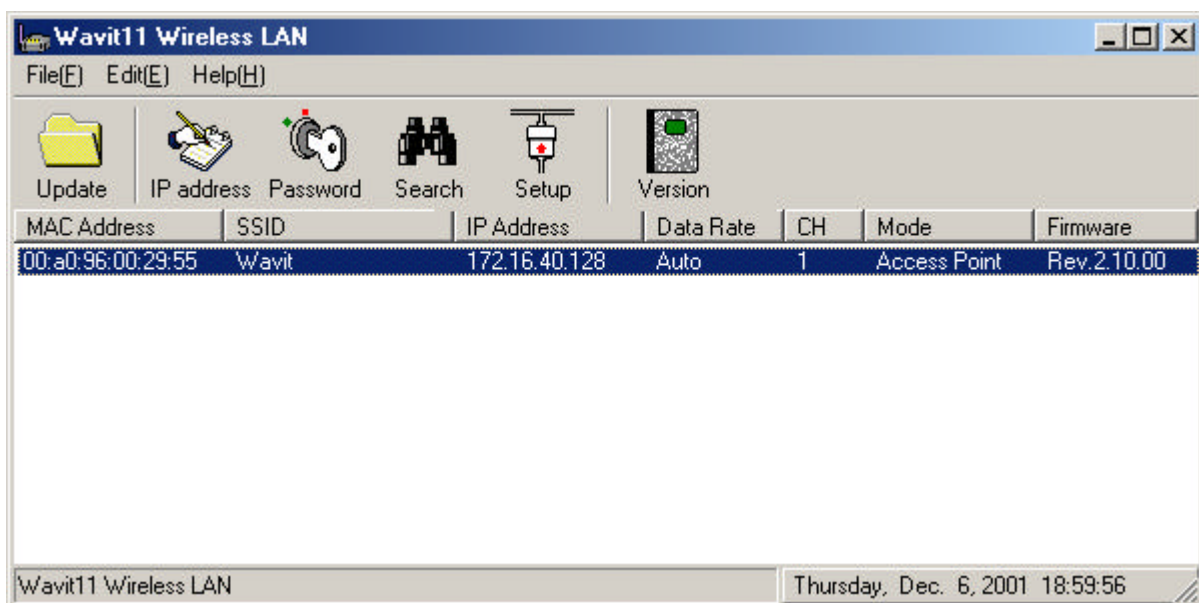
[STEP4] Click the “OK” button.



[STEP5] In the “Status” page, check that the Operational Mode is set to “AP” and Channel is set correctly as you selected, and then click the “OK” button.



[STEP6] After returning to the “Wavit11 Wireless LAN” window, check that all setups you selected are reflected correctly, and then end the “Wavit11 Configuration Utility.”



[STEP7] Change the control password.



Many unidentified person can access the Wavit11 in AP mode. When the setting of Wavit11 has been modified, Access Point cannot make the proper operation. Modify the control password so as to provide protection against the settings being changed. Take notes for the new control password after its modification.



“How to Change the Control Password”

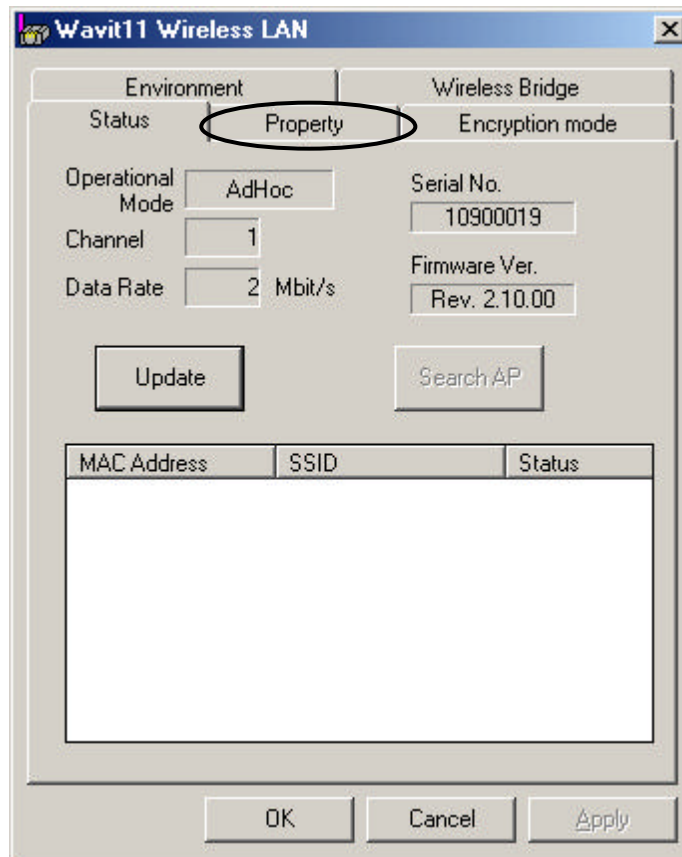
page61

7.7. How to Setup the Wireless Bridge Mode

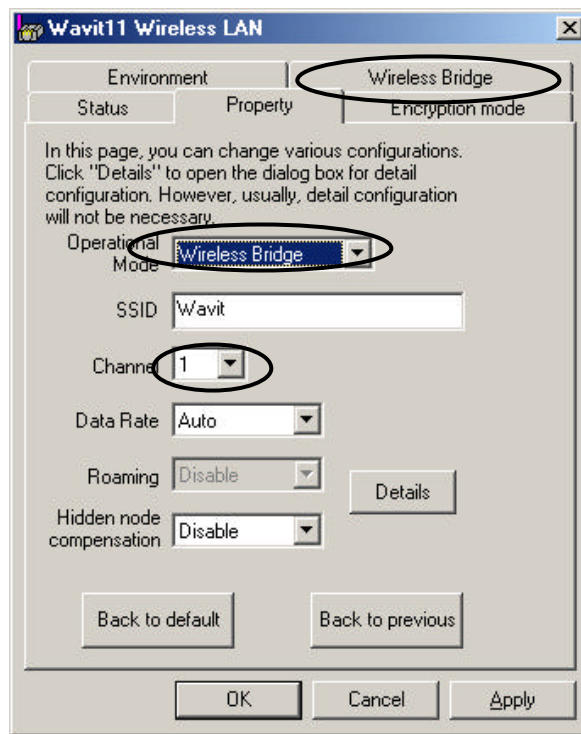
[STEP1] Click the “Setup” in the “Wavit11 Wireless LAN” window.



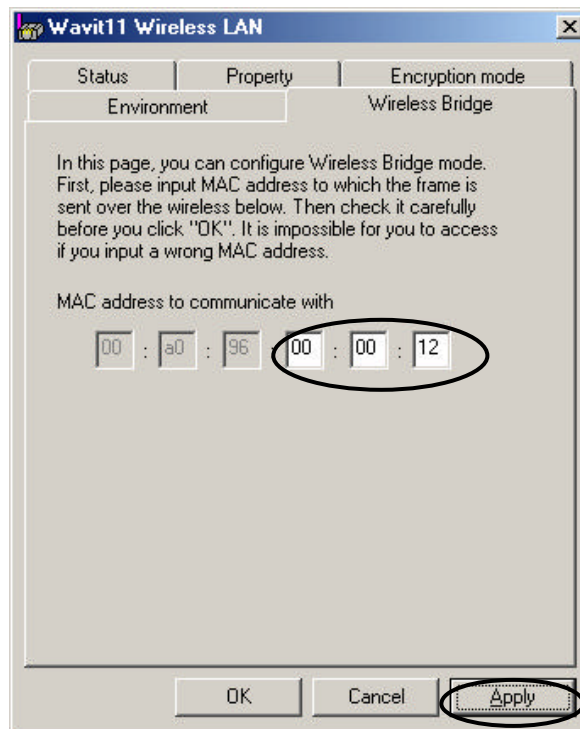
[STEP2] Click the “Property”.



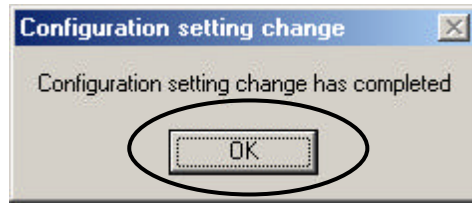
[STEP3] At the “Property” page, change the Operational Mode to “Wireless Bridge” and select the Channel, and then open the “Wireless Bridge” page.



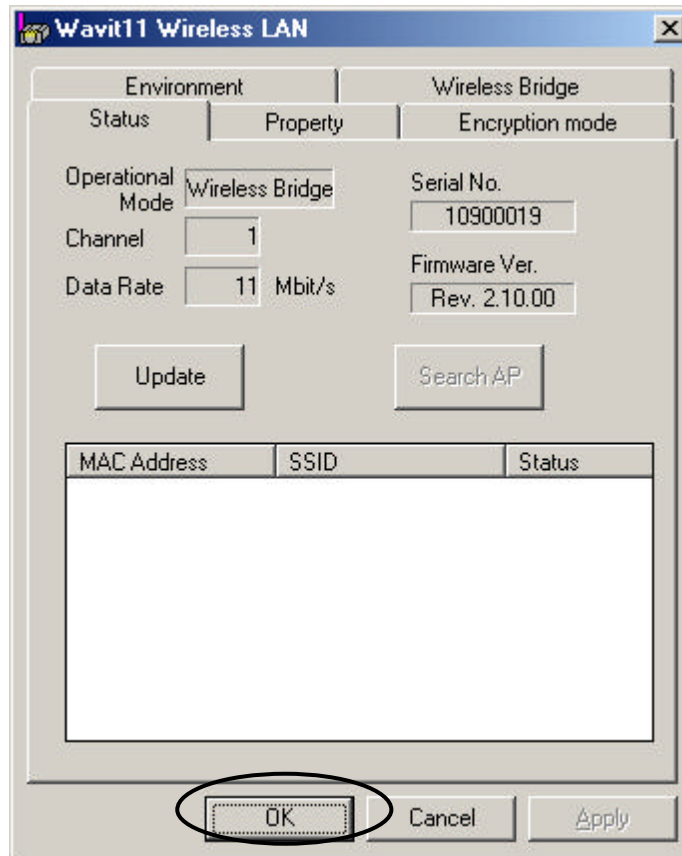
[STEP4] Last 6 digit of MAC address that is indicated at the label put on the other end of Wavit11 should be inserted to “MAC address to communicate with”, at the “Wireless Bridge” page, and then click the “Apply” button.



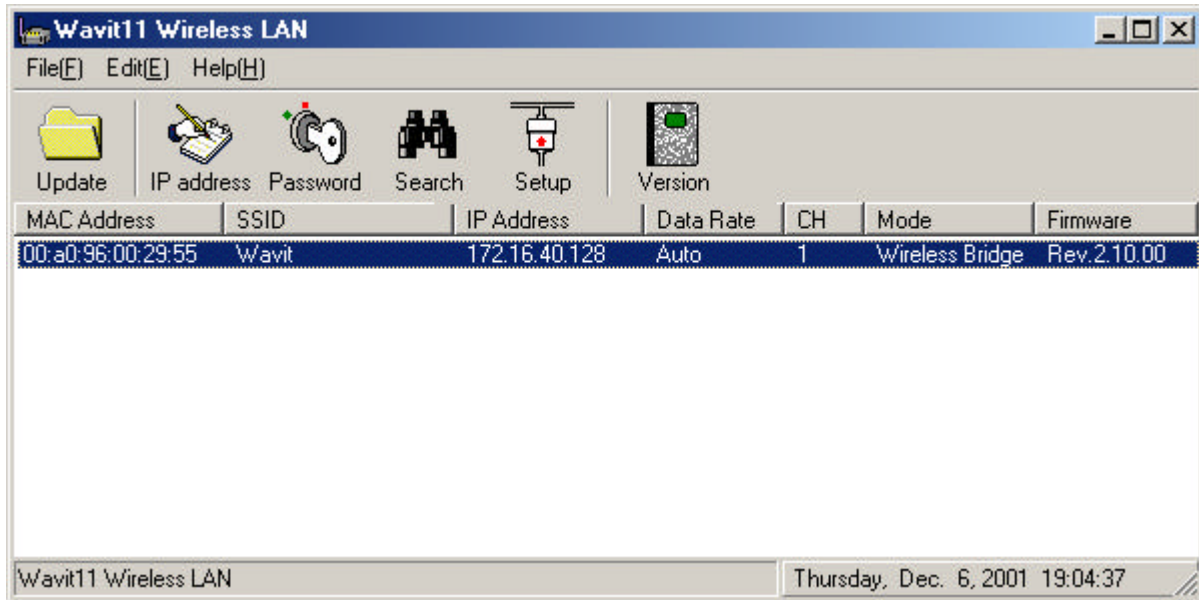
[STEP5] Click the “OK” button.



[STEP6] After checking that the Operational Mode is set to “Wireless Bridge” and the Channel is set correctly as you selected, and then click the “OK” button.



[STEP7] After returning to the “Wavit11 Wireless LAN” window, check that all setups you selected are reflected correctly, and then end the “Wavit11 Configuration Utility”.



[STEP8] Change the “Control password”.



Many unidentified person can access the Wavit11 in Wireless Bridge mode. When the setting of Wavit11 has been modified, the Wireless Bridge cannot make a proper operation. Modify the control password so as to provide the protection against the settings being changed. Take notes for the new control password after its modification.

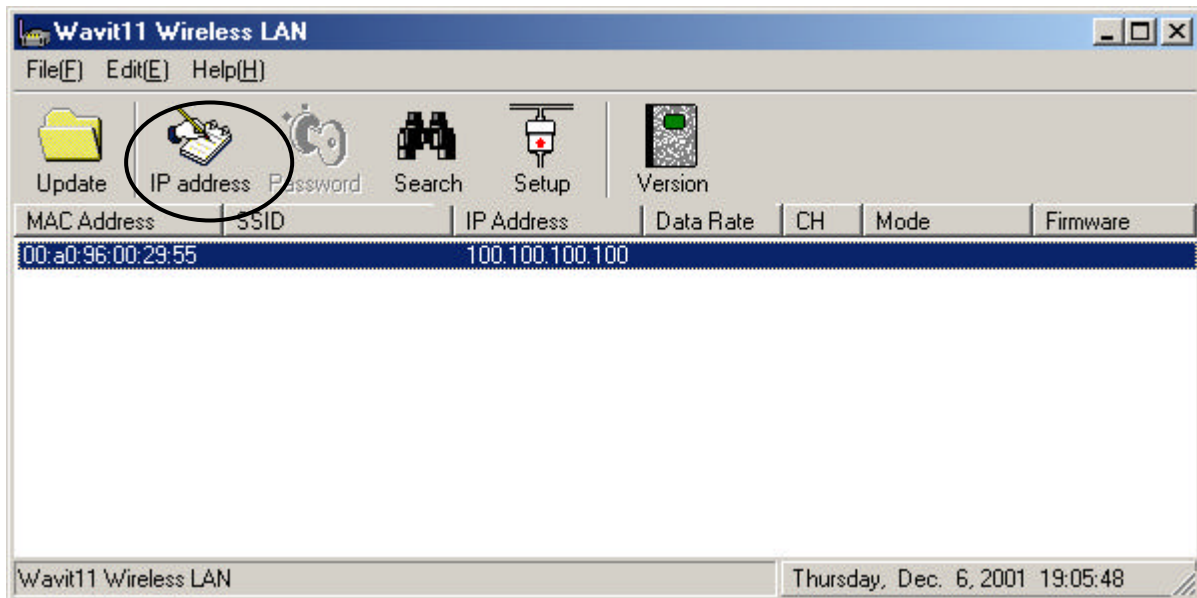


“How to Change the Control Password”

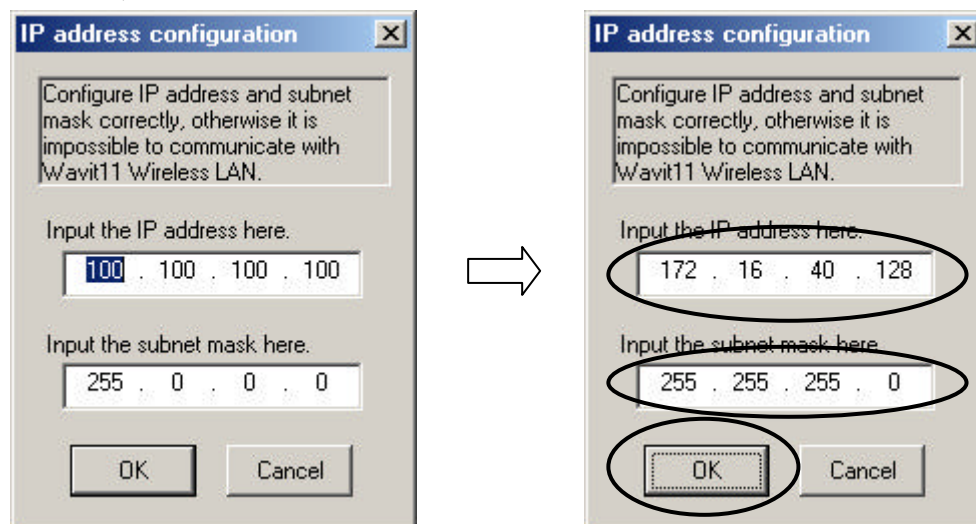
page61

7.8. How to Change the Wavit11 IP address

[STEP1] Click the “IP address” in the “Wavit11 Wireless LAN” window.



[STEP2] At the “IP address configuration” window, set the “IP Address” and the “Subnet Mask”, and then click the “OK” button.



A host address different from that of personal computer should be set to the host address area. Setting will not be practicable if every bit comprising the host address is 1 and host address is 0.



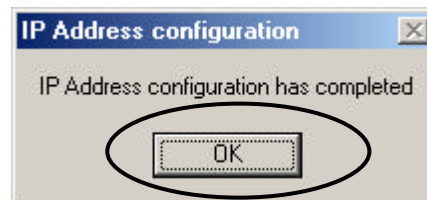
When the wrong subnet mask is input by mistake, Wavit11 cannot sometimes communicate with personal computer. Thus there are possibilities that the setting of Wavit11 cannot be accomplished and the mistaken setting cannot be reverted afterwards. Initialize the Wavit11, if this kind of mistake takes place.



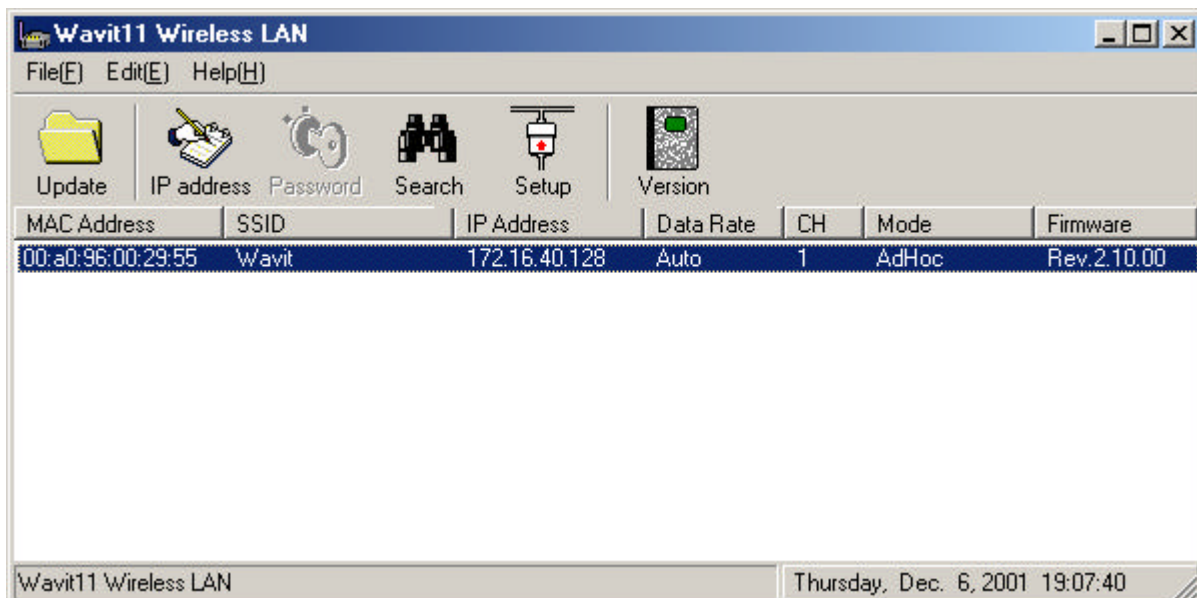
“Wavit11 Initialization”

page63

[STEP3] Click the “OK” button.

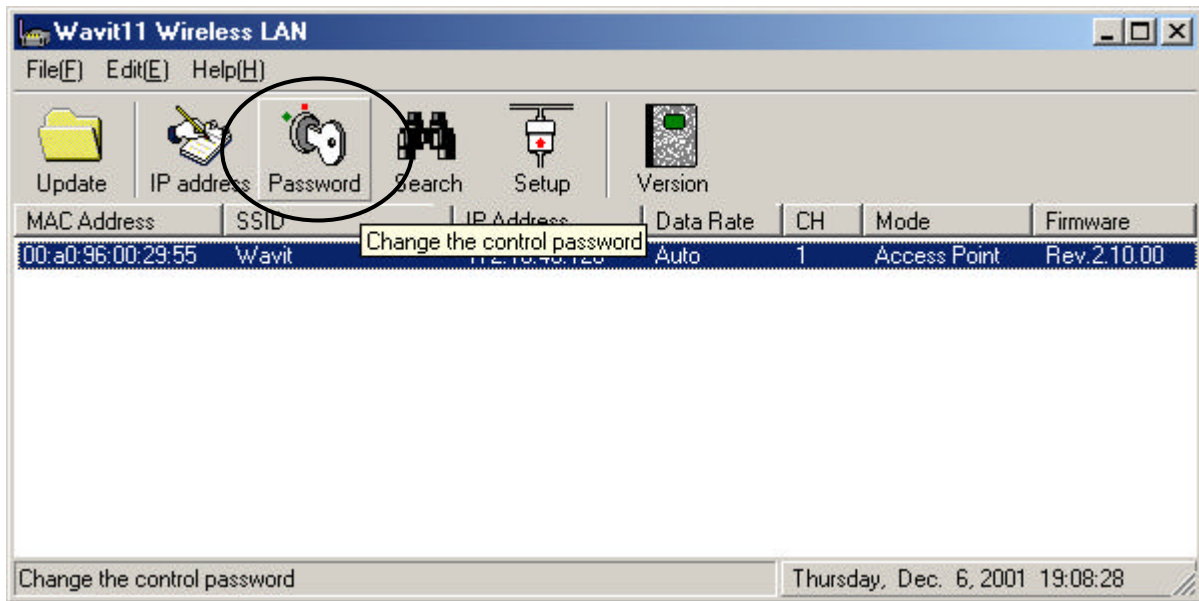


[STEP4] After the “Wavit11 Wireless LAN” window appears, Wavit11 information is shown in the station list.



7.9. How to Change the Control Password

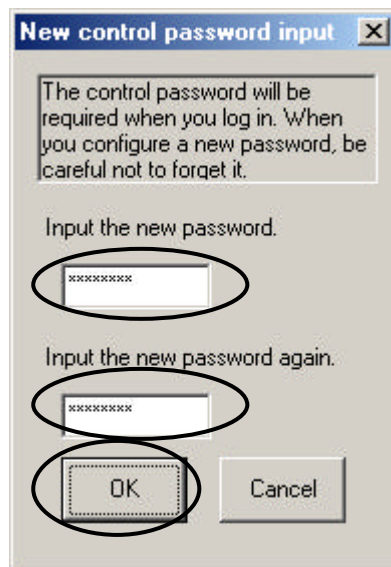
[STEP1] Click the “Password” in the “Wavit11 Wireless LAN” window.



[STEP2] Input current control password, and click the “OK” button.



[STEP3] Input new passwords twice, and click the “OK” button.

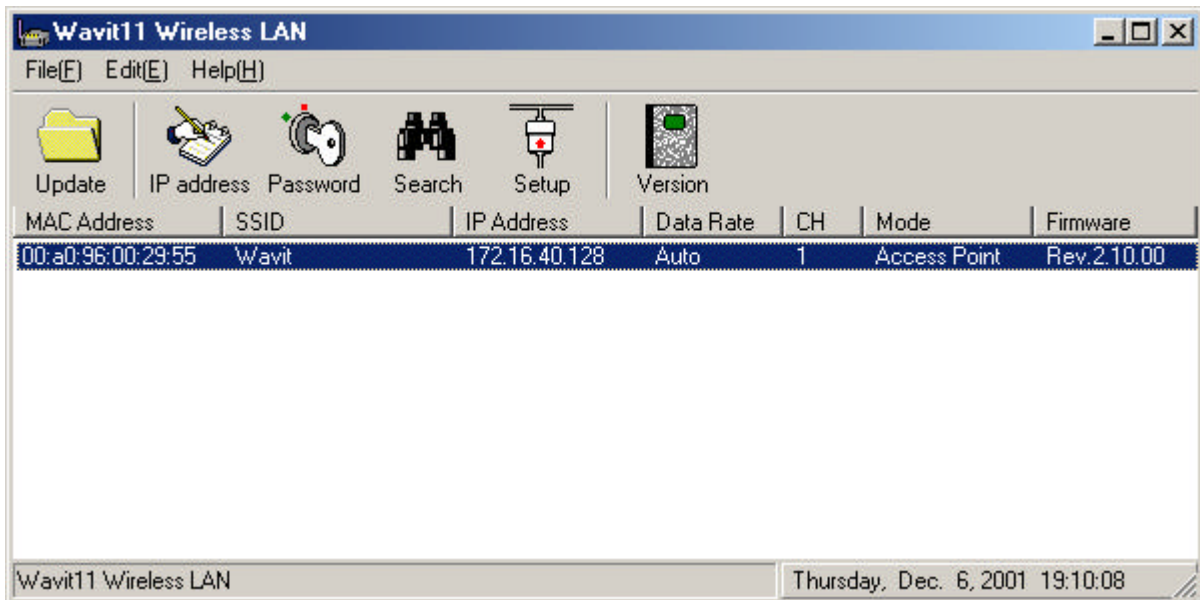


[STEP4] Click the “OK” button.



The password can be modified only when the operational mode is “AP” or “Wireless Bridge”.

[STEP5] The “Wavit11 Wireless LAN” window appears.

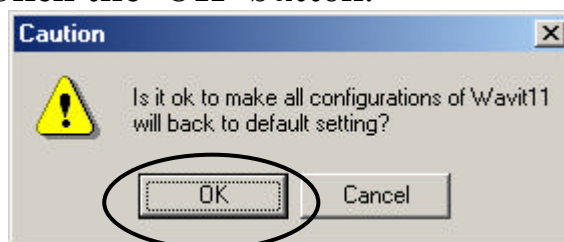


7.10. Wavit11 Initialization

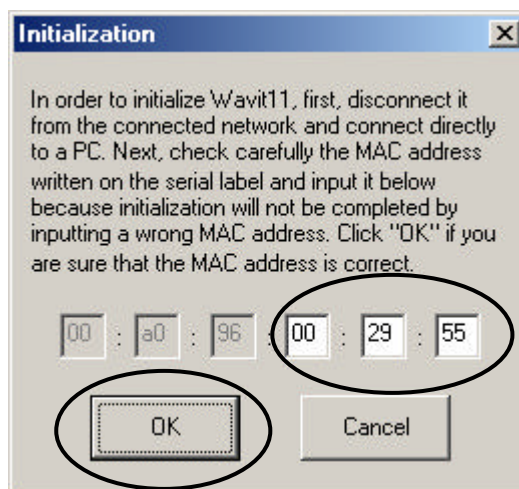
[STEP1] Click “File (F)”->”Initialize (R)” in the “Wavit11 Wireless LAN” window.



[STEP2] The window opens to confirm your intention of carrying out the initialization. Click the “OK” button.



[STEP3] At the Initialization window, input 6 digits of the MAC address that is indicated at the label put on the bottom part of Wavit11 undertaking the initialization, then click the “OK” button.



[STEP4] Click the “OK” button.



[STEP5] The “Wavit11 Wireless LAN” window is displayed. It is necessary to make a setting again, because the setting of Wavit11 has returned to the original setting at the time of the factory shipment.

