



FCC ID : EVOCT1702

NOVEMBER 26, 2003
Federal Communications Commission
Equipment Approval Services
7435 Oakland Mills Road
Columbia, MD 21046

**SUBJECT : KOREA DATA SYSTEMS CO., LTD.
FCC ID: EVOCT1702
FCC Part 15 Subpart B Certification**

Gentlemen:

Transmitted herewith, on behalf of KOREA DATA SYSTEMS CO., LTD. is an application for a FCC Part 15 Subpart B Certification of the following 17-inch LCD TV Monitor:

**FCC ID : EVOCT1702
Model : CT1702**

Attached is the applicant's Cover Letter, External/Internal Photos, Test Set-Up Photos, FCC ID & Label Location, User Manual, Block Diagram and Test Report.

Should you have any questions or comments concerning the above, please contact the undersigned.

Ki Soo Kim

KI SOO KIM
EMC MAMAGER

cc: Mr. SOO MIN KIM ----- QUALITY ASSURANCE / MANAGER

• **Solution for EMI**

We, KOREA DATA SYSTEMS CO., LTD. , announce that all modifications will be incorporated into each unit sold in the U.S.

- 1. Apply a copper tape to the LCD Panel**
- 2. Attach a gasket on the main shielded**
- 3. Apply a ferrite Core to the LVDS cable & Speaker cable**
- 4. Attach a gasket on the LCD panel**

(Please refer to next page of the photographs for Solution for EMI)

KOREA DATA SYSTEMS CO., LTD.

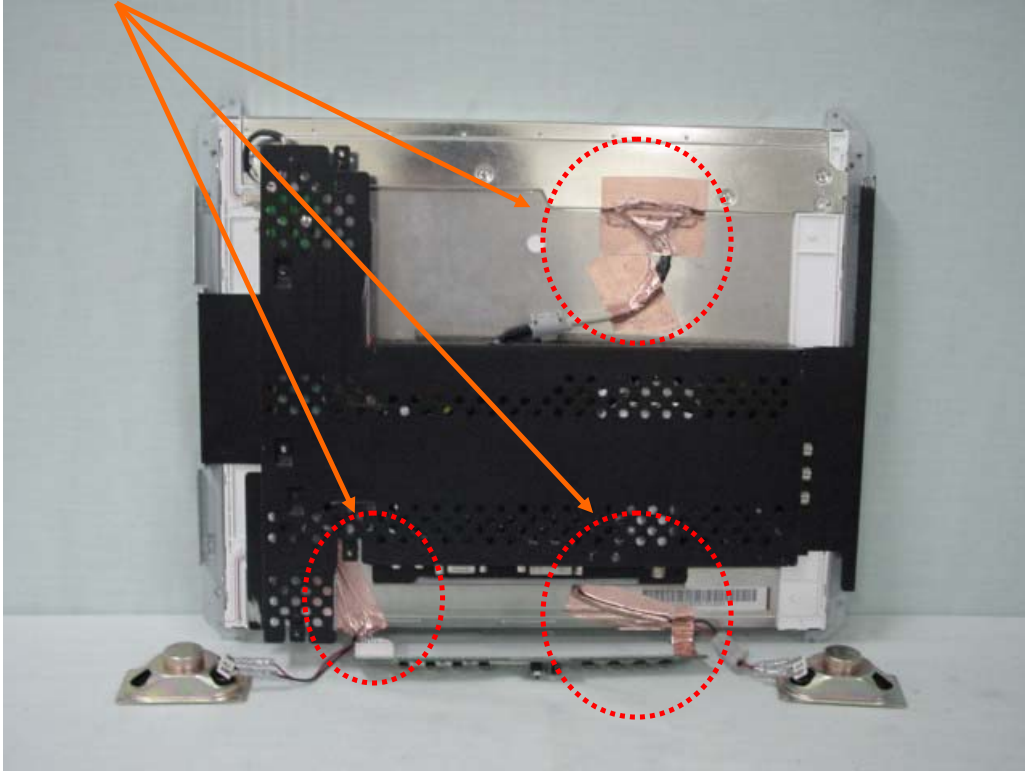
2003.11.26

QUALITY ASSURANCE / MANAGER

SOO MIN KIM

S.M. Kim

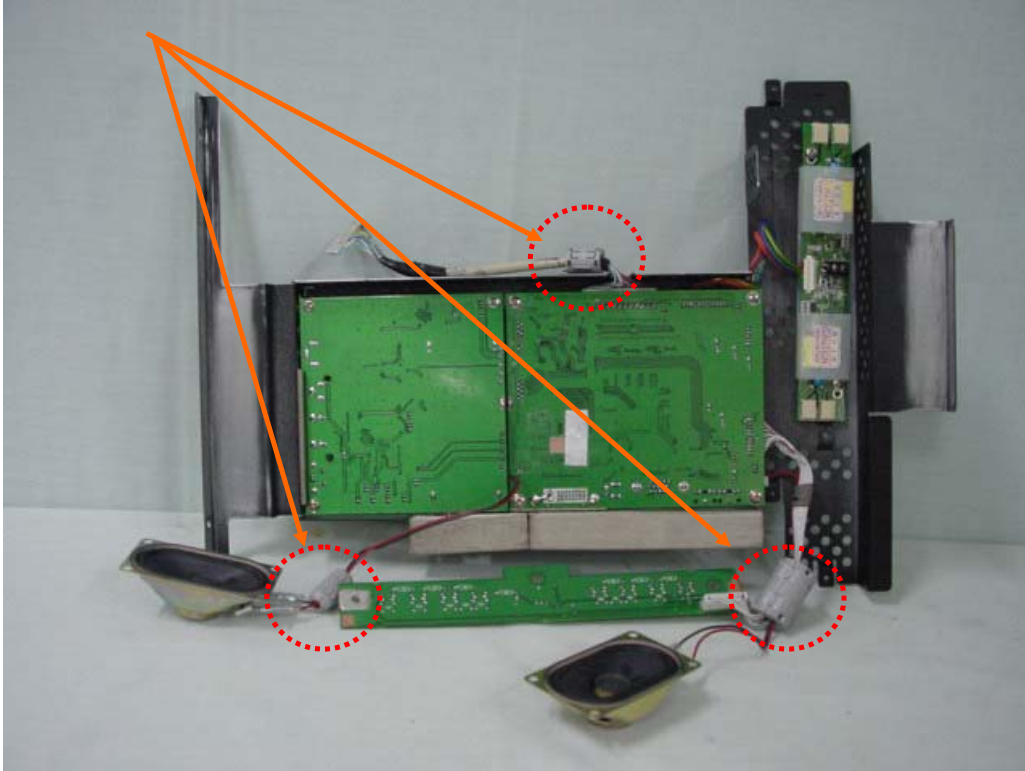
1. Apply a copper tape to the LCD Panel



2. Attach a gasket on the main shielded



3. Apply a ferrite Core to the LVDS cable & Speaker cable



4. Attach a gasket on the LCD panel

