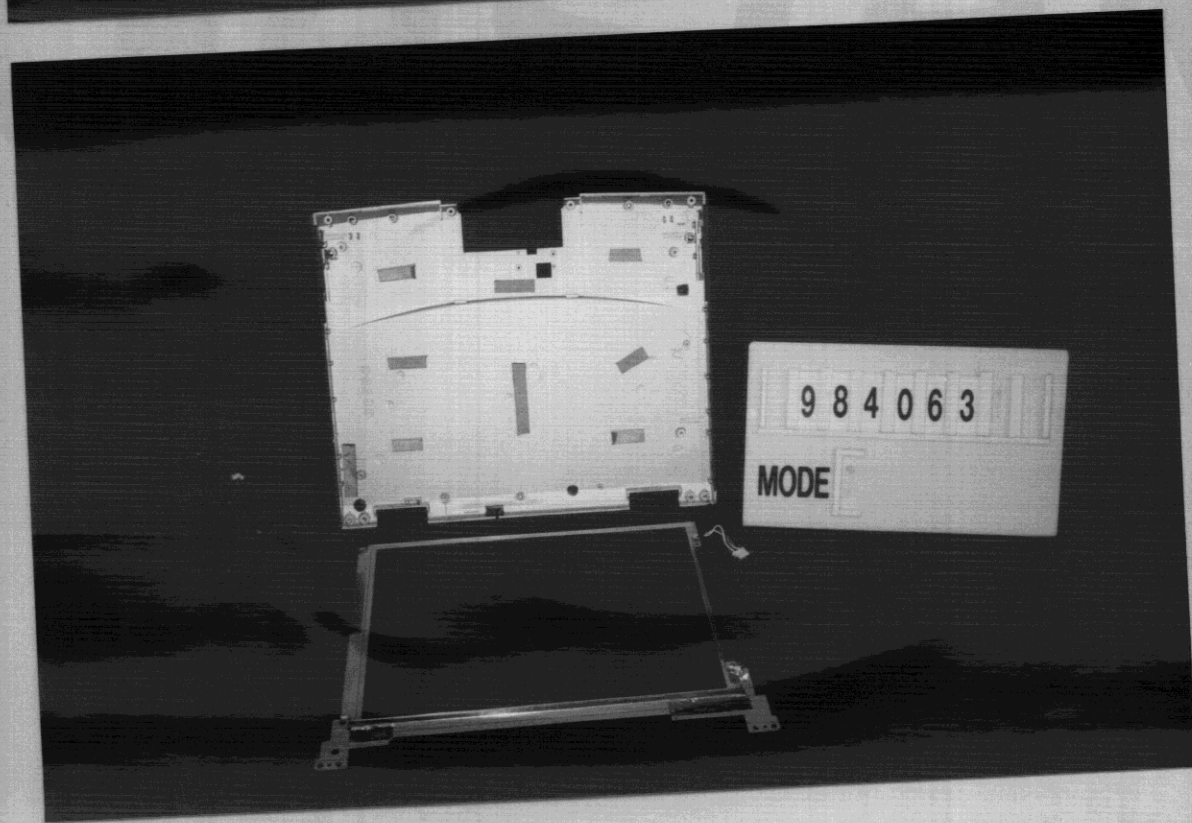
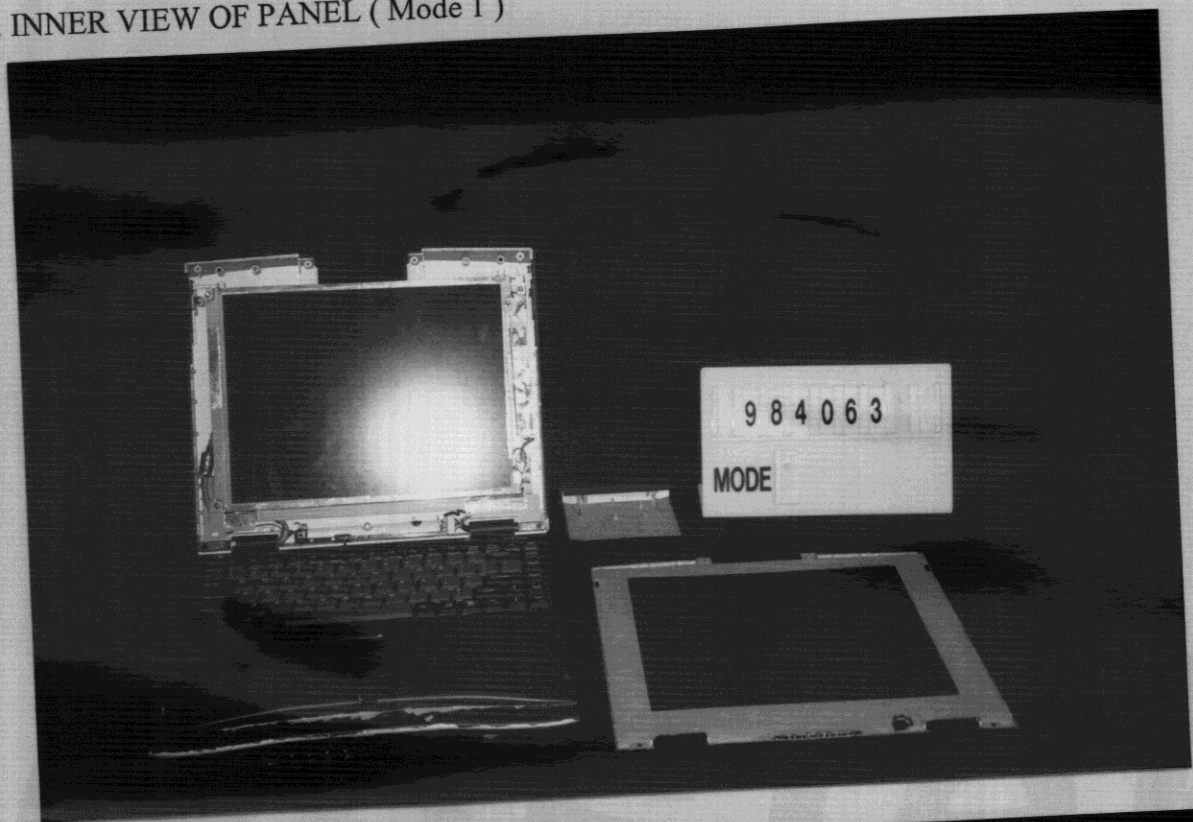
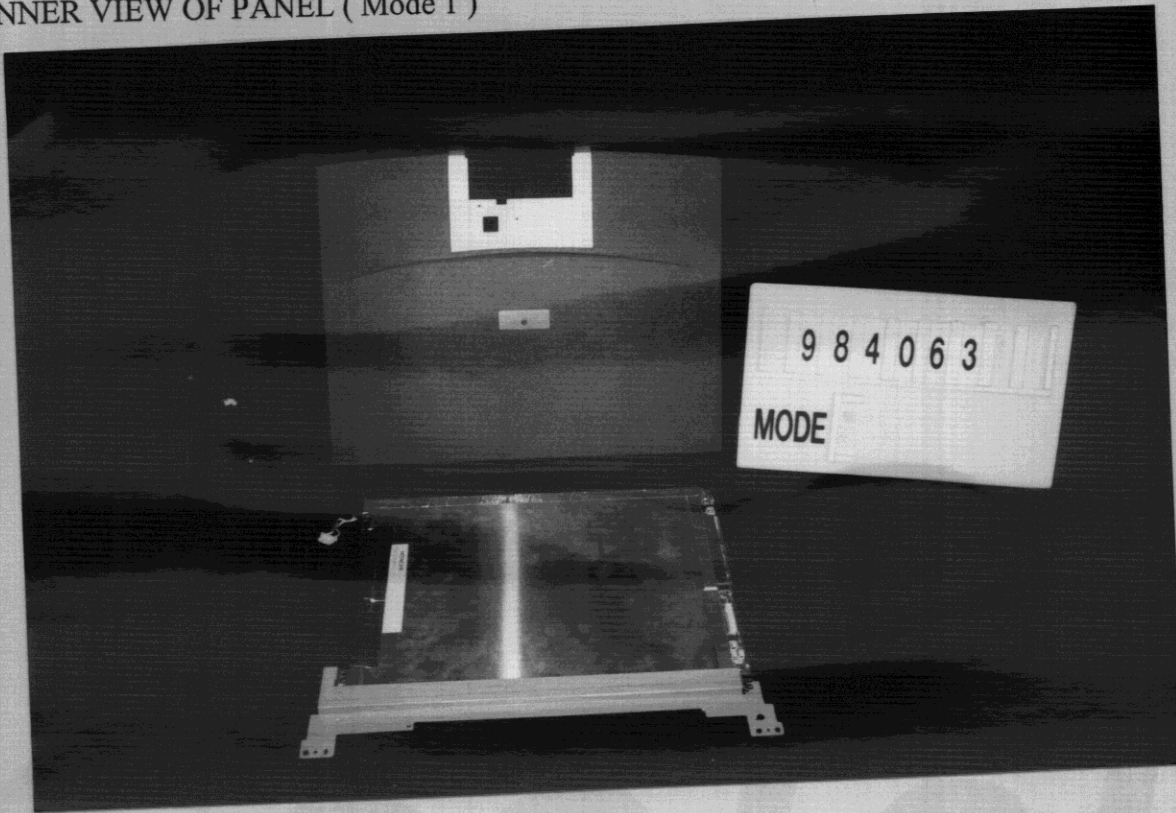


9. INNER VIEW OF PANEL (Mode 1)

10. INNER VIEW OF PANEL (Mode 1)

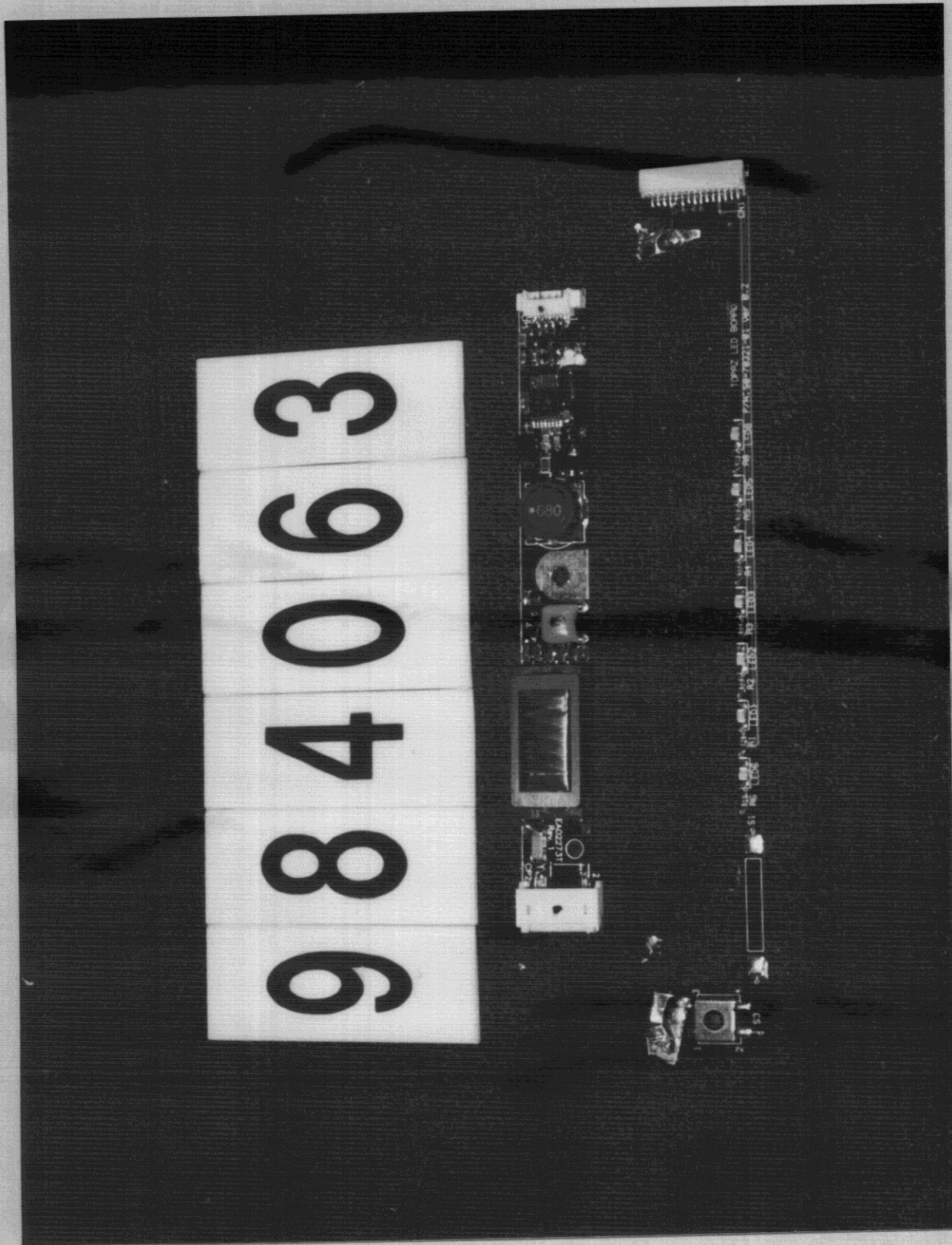


11. INNER VIEW OF PANEL (Mode 1)



GESTEK

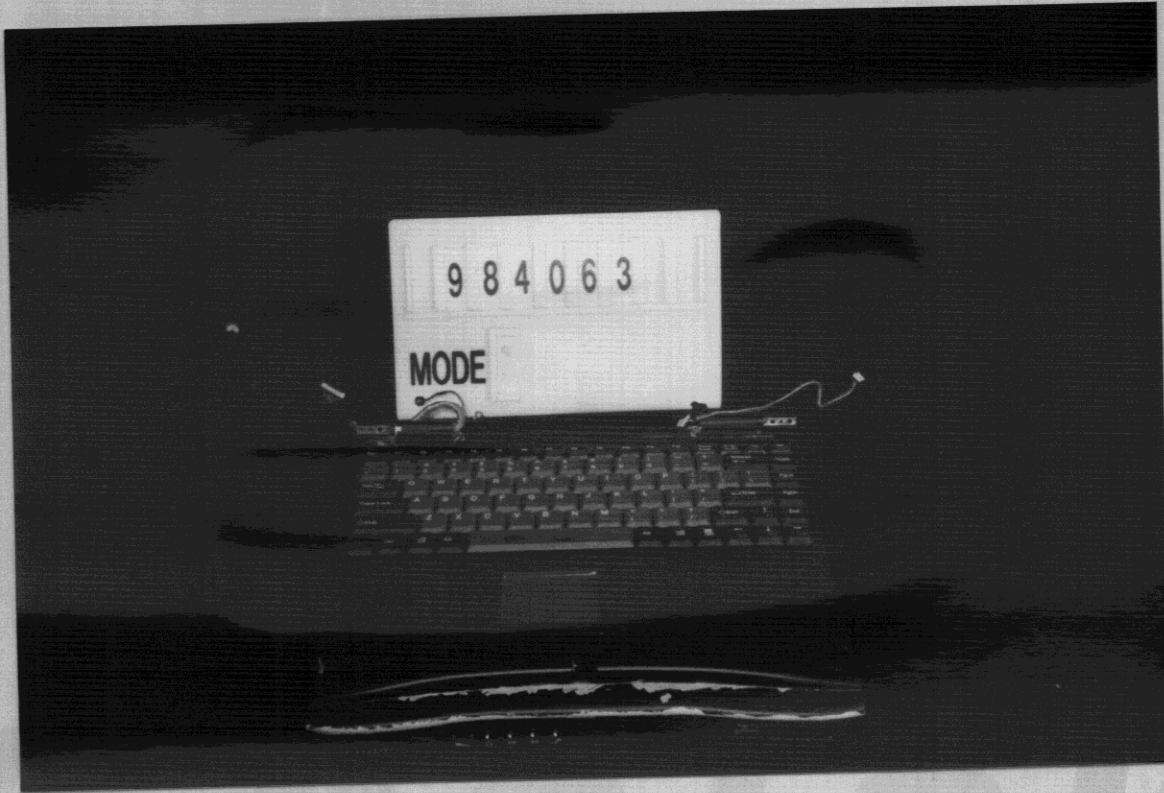
12. COMPONENT SIDE OF INVERTOR BOARD & LVDS BOARD (Mode 1)



13. SOLDER SIDE OF INVERTOR BOARD & LVDS BOARD (Mode 1)



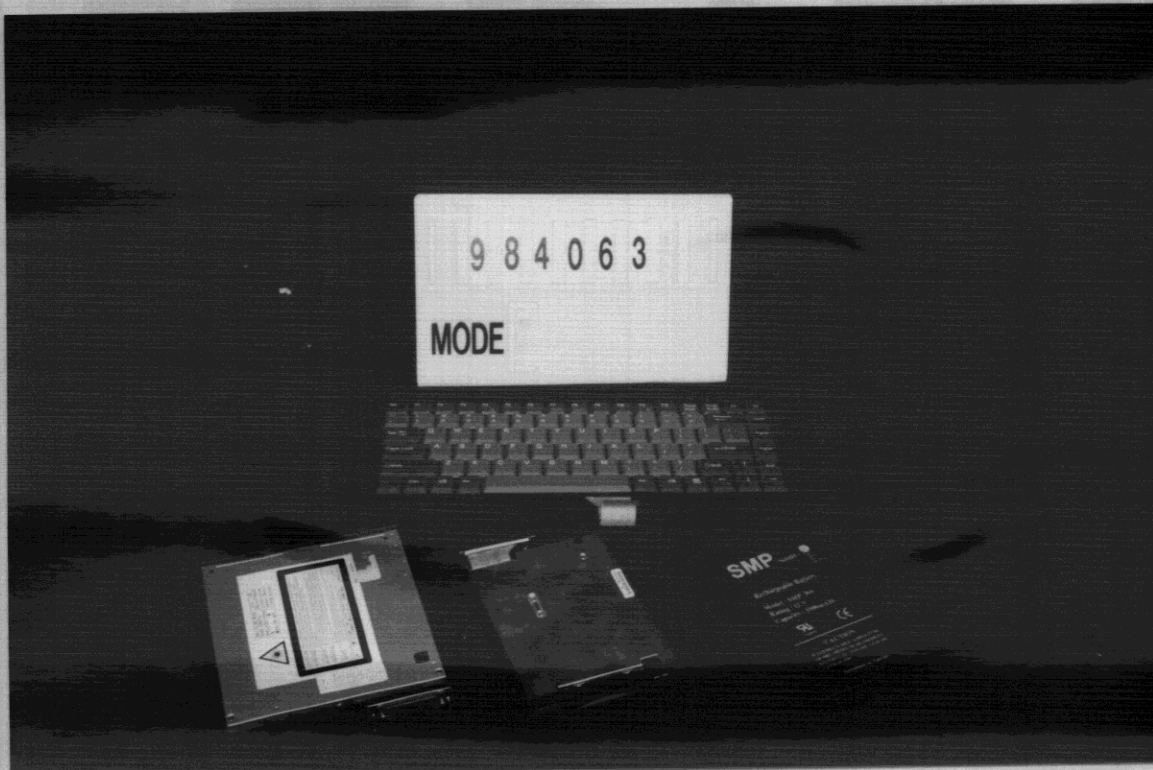
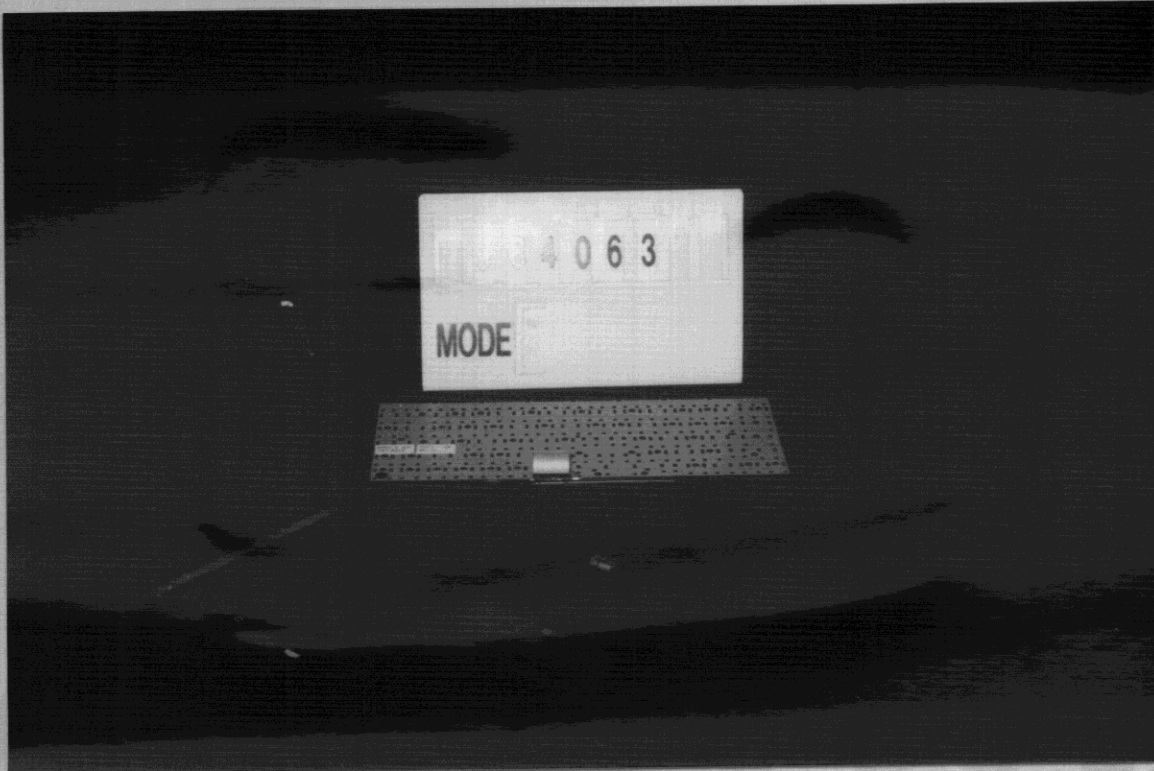
14. FRONT VIEW OF KEYBOARD (Mode 1)



GESTEK

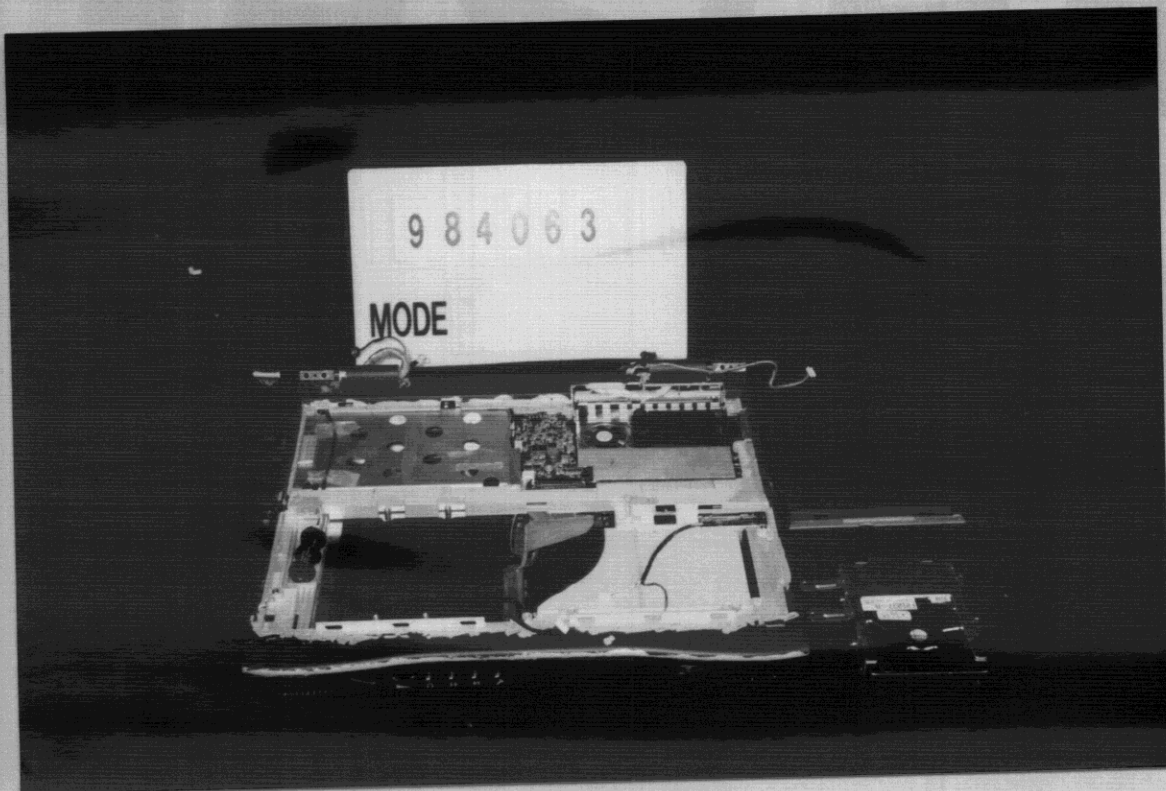
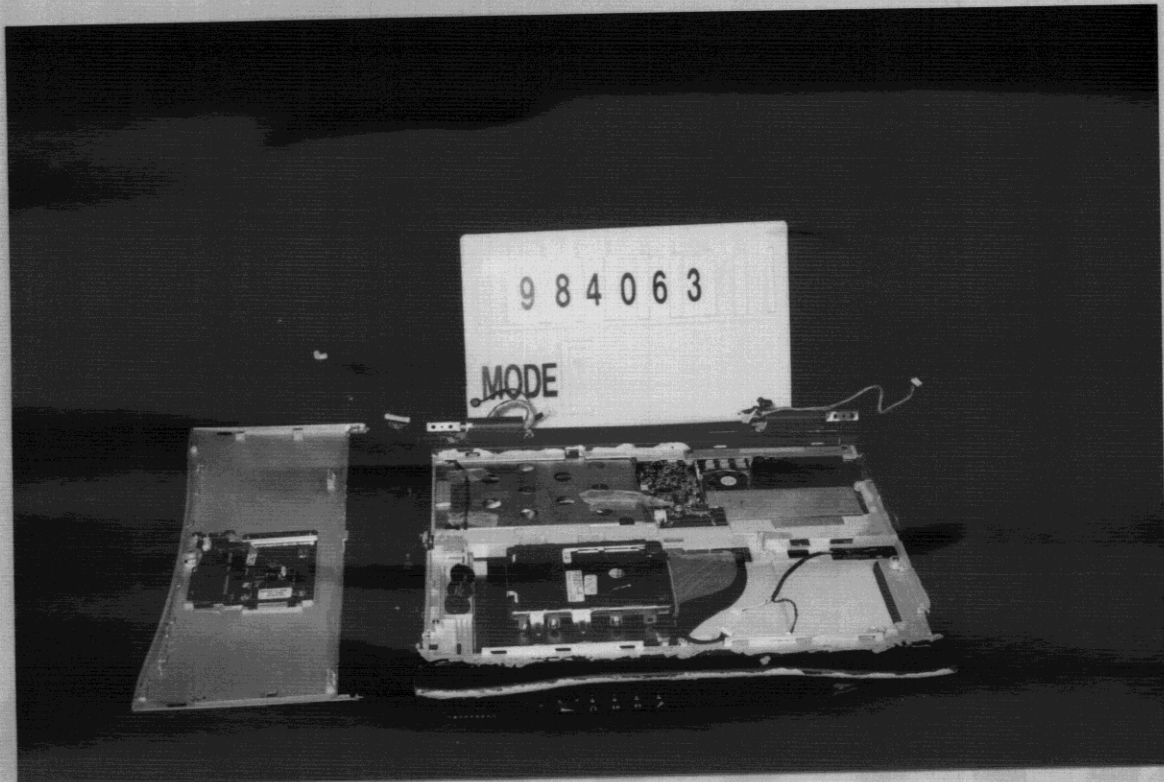
15. FRONT VIEW OF KEYBOARD, CD-ROM, FDD, BATTERY (Mode 1)

16. BACK VIEW OF KEYBOARD, CD-ROM, FDD, BATTERY (Mode 1)



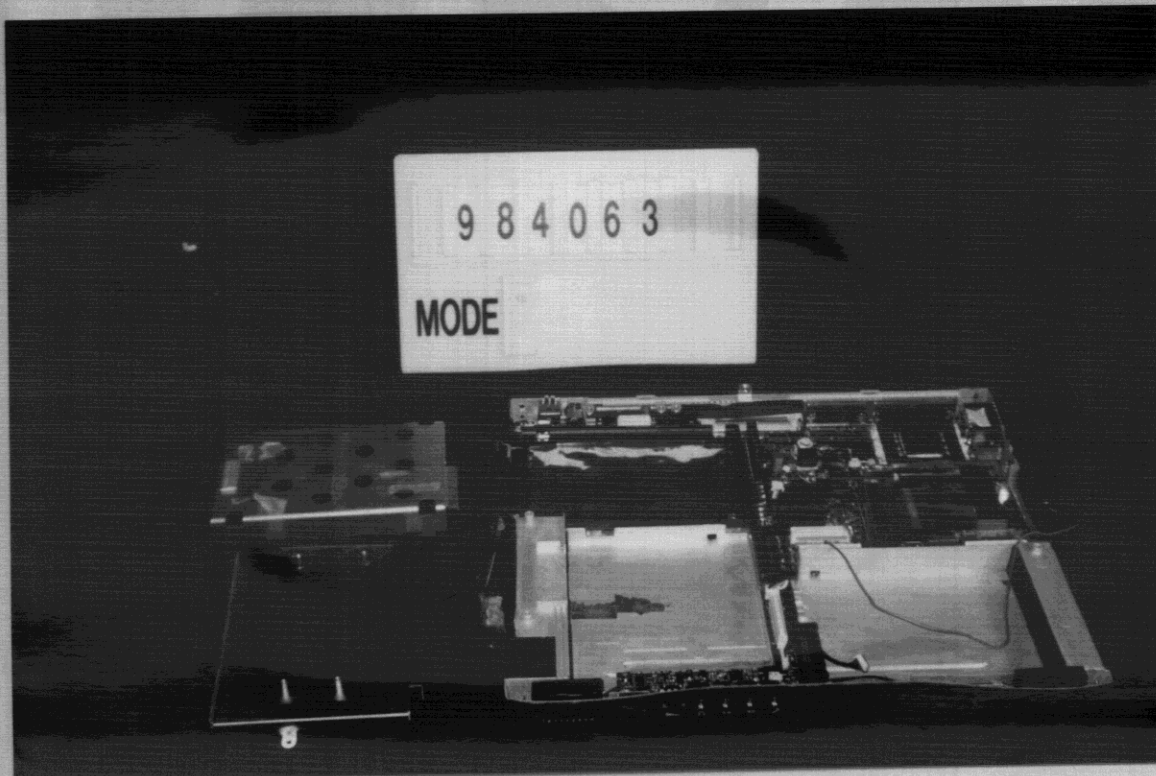
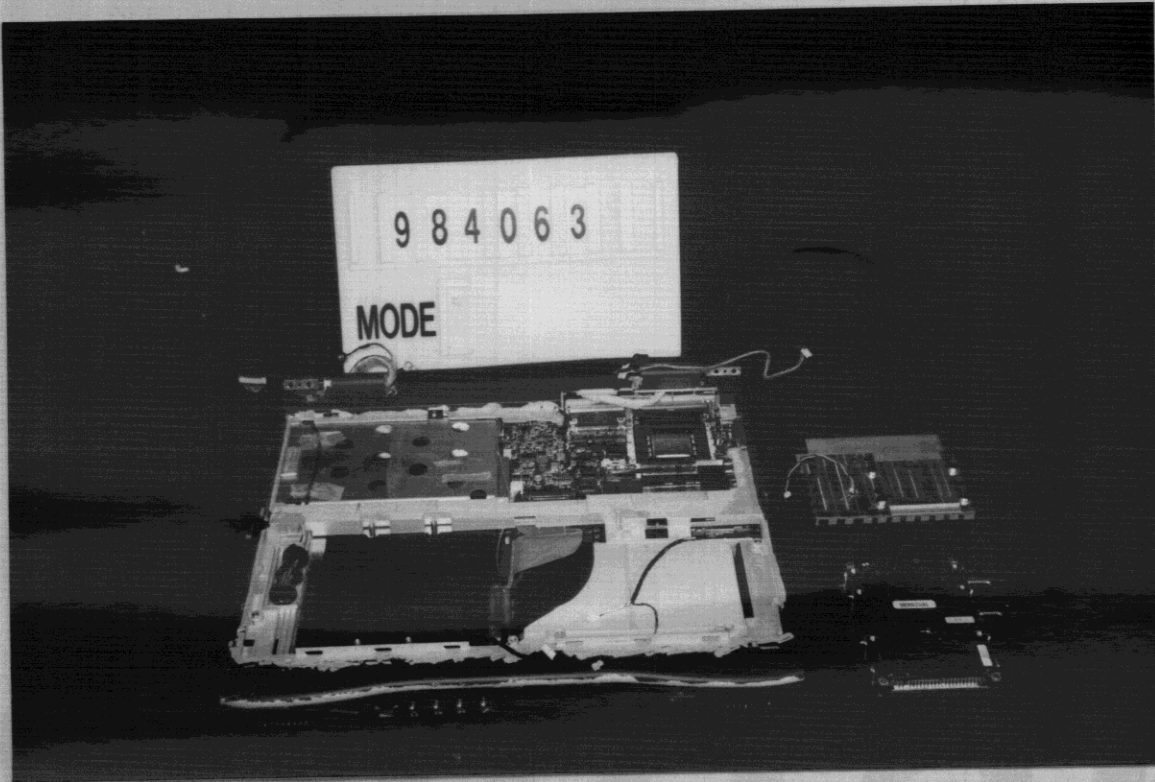
17. HDD AND INNER VIEW OF NOTEBOOK COMPUTER (Mode 1)

18. HDD AND INNER VIEW OF NOTEBOOK COMPUTER (Mode 1)

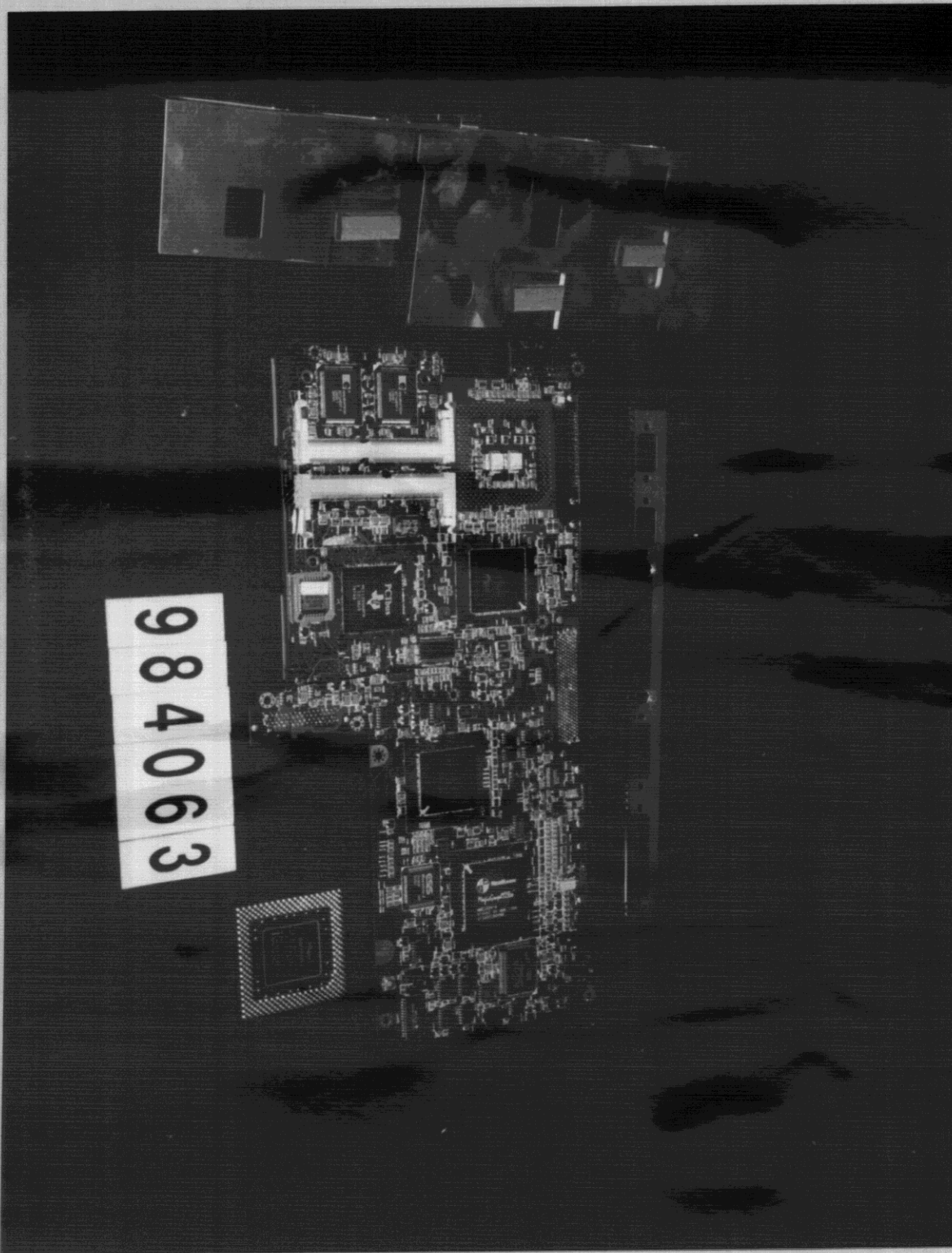


19. HDD AND INNER VIEW OF NOTEBOOK COMPUTER (Mode 1)

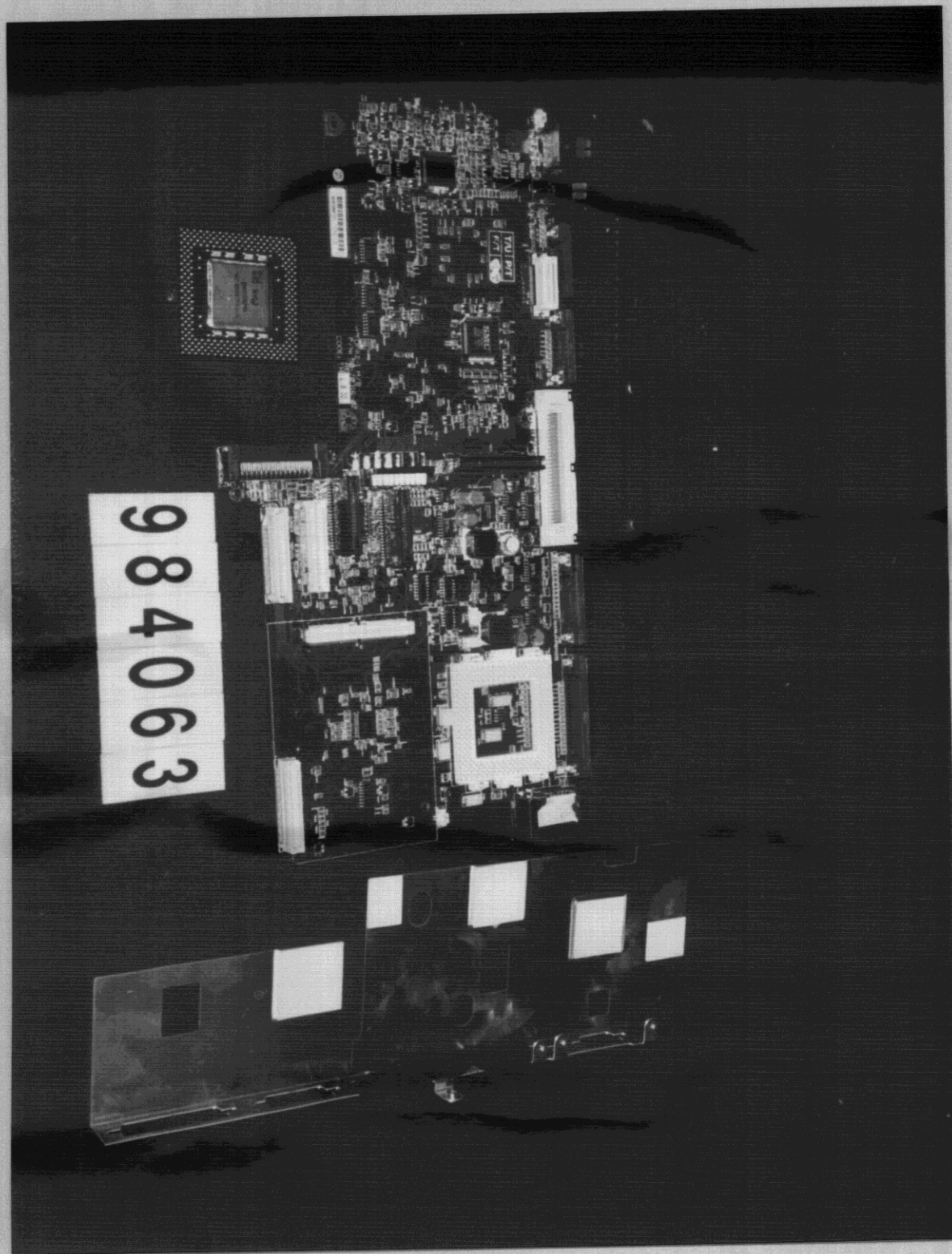
20. INNER VIEW OF NOTEBOOK COMPUTER (Mode 1)



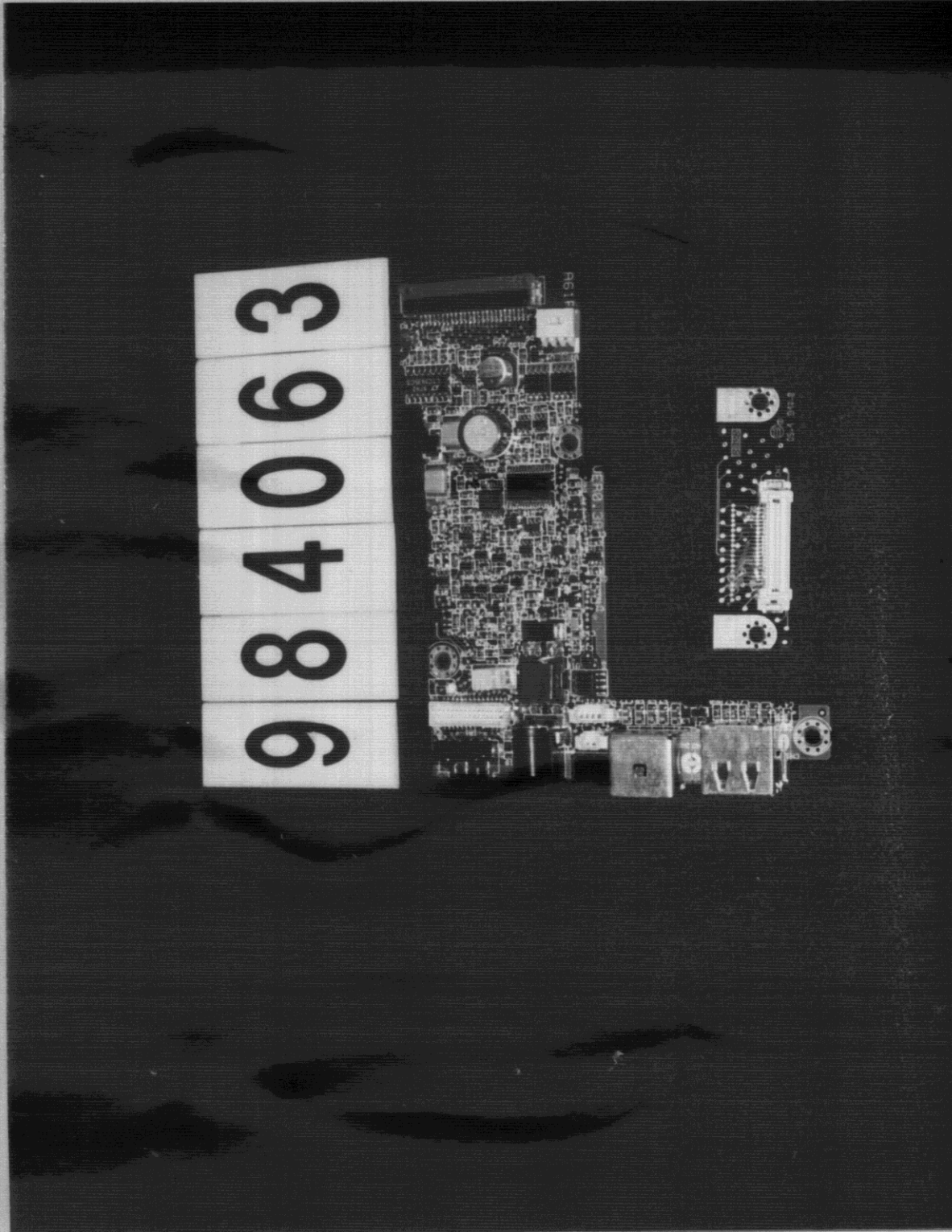
21. CPU AND COMPONENT SIDE OF MAIN BOARD (Mode 1)



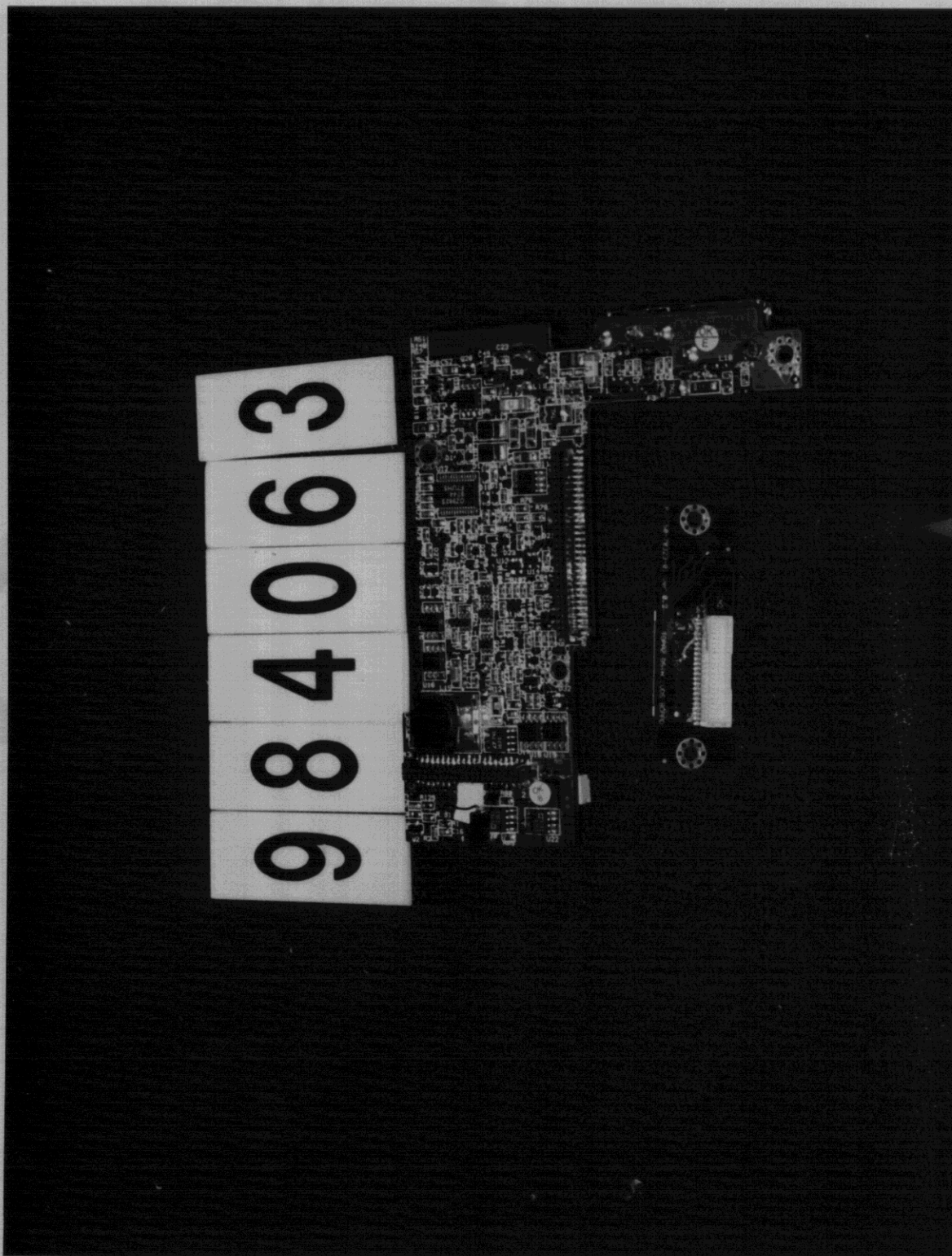
22. CPU AND SOLDER SIDE OF MAIN BOARD (Mode 1)



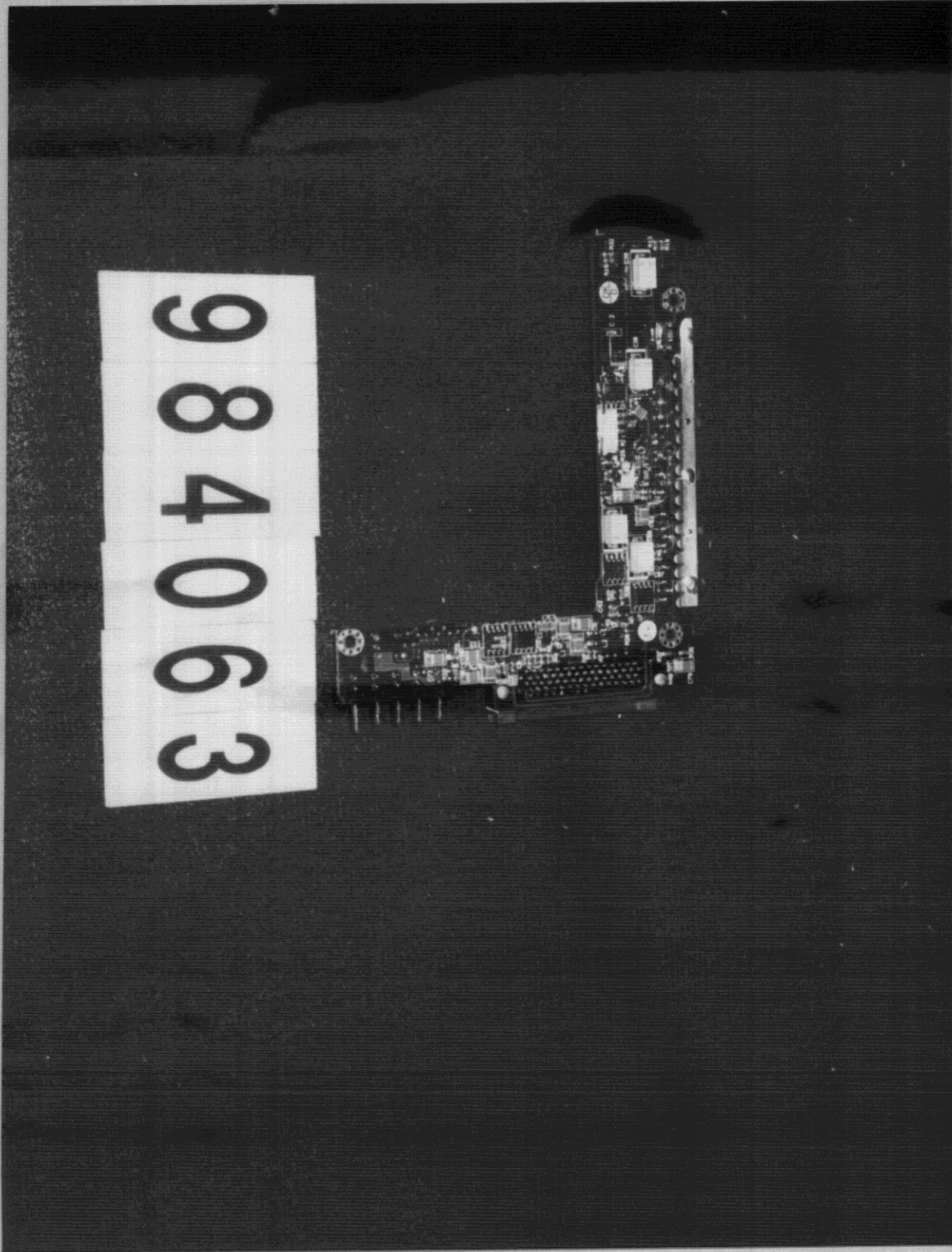
23. COMPONENT SIDE DC TO DC AND LCD CABLE ADAPTOR (Mode 1)



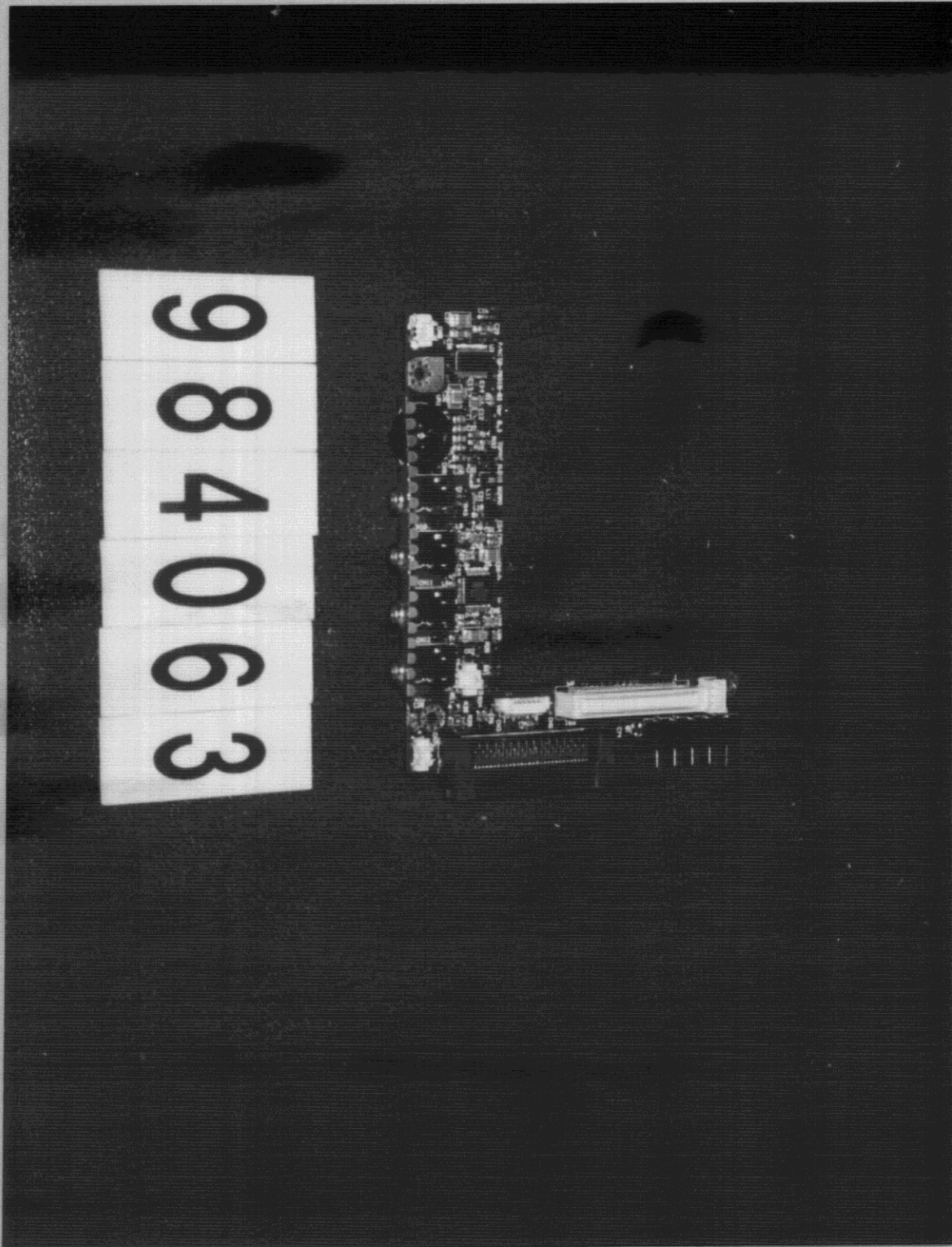
24. COMPONENT SIDE DC TO DC AND LCD CABLE ADAPTOR (Mode 1)



25. COMPONENT SIDE AUDIO BOARD (Mode 1)

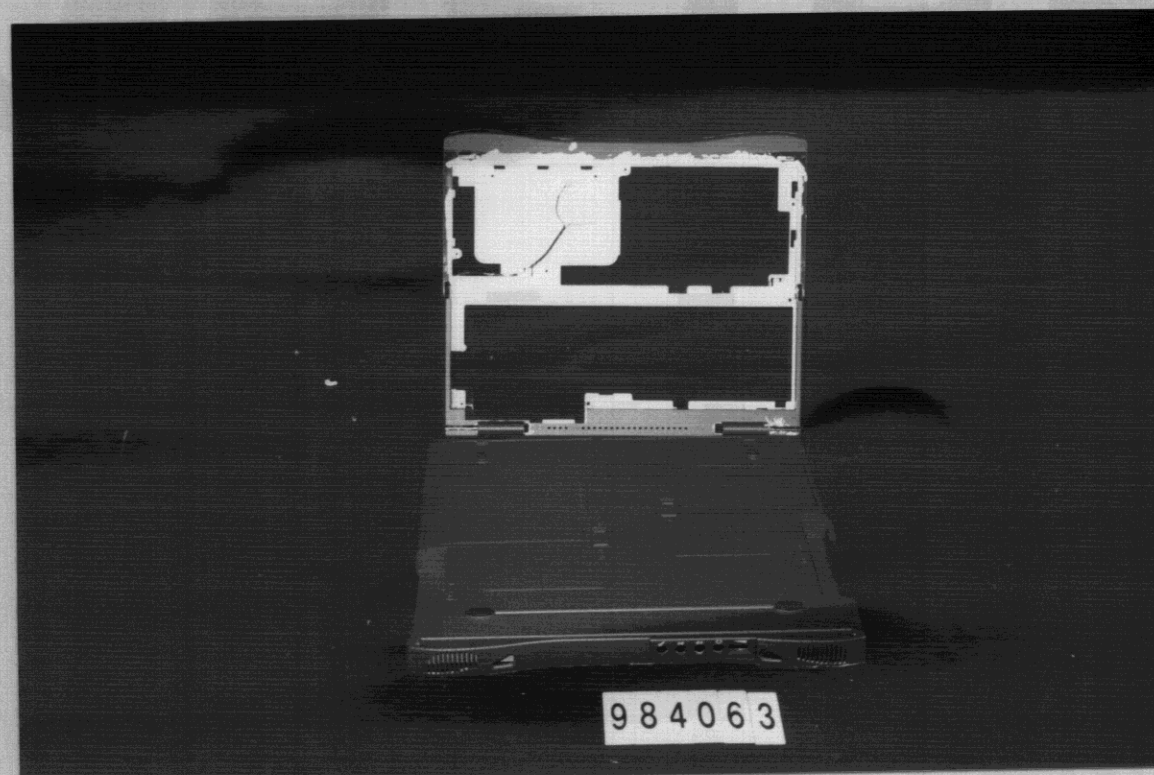
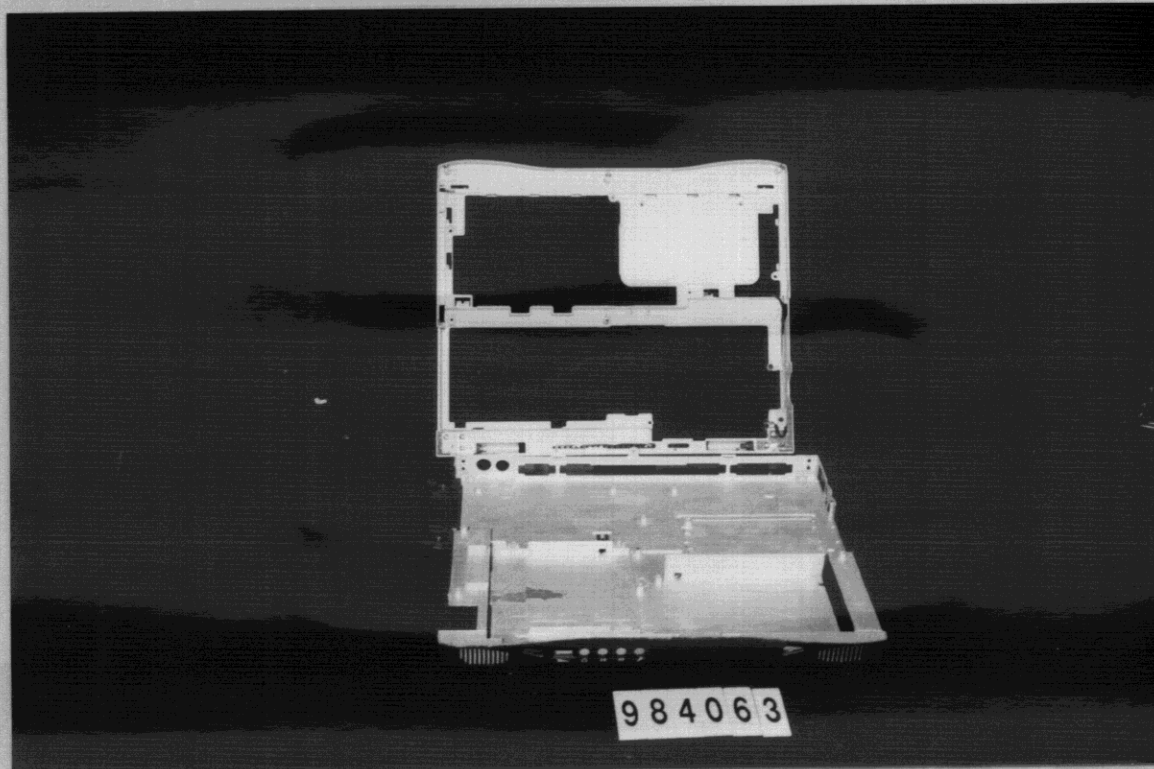


26. SOLDER SIDE OF AUDIO BOARD (Mode 1)



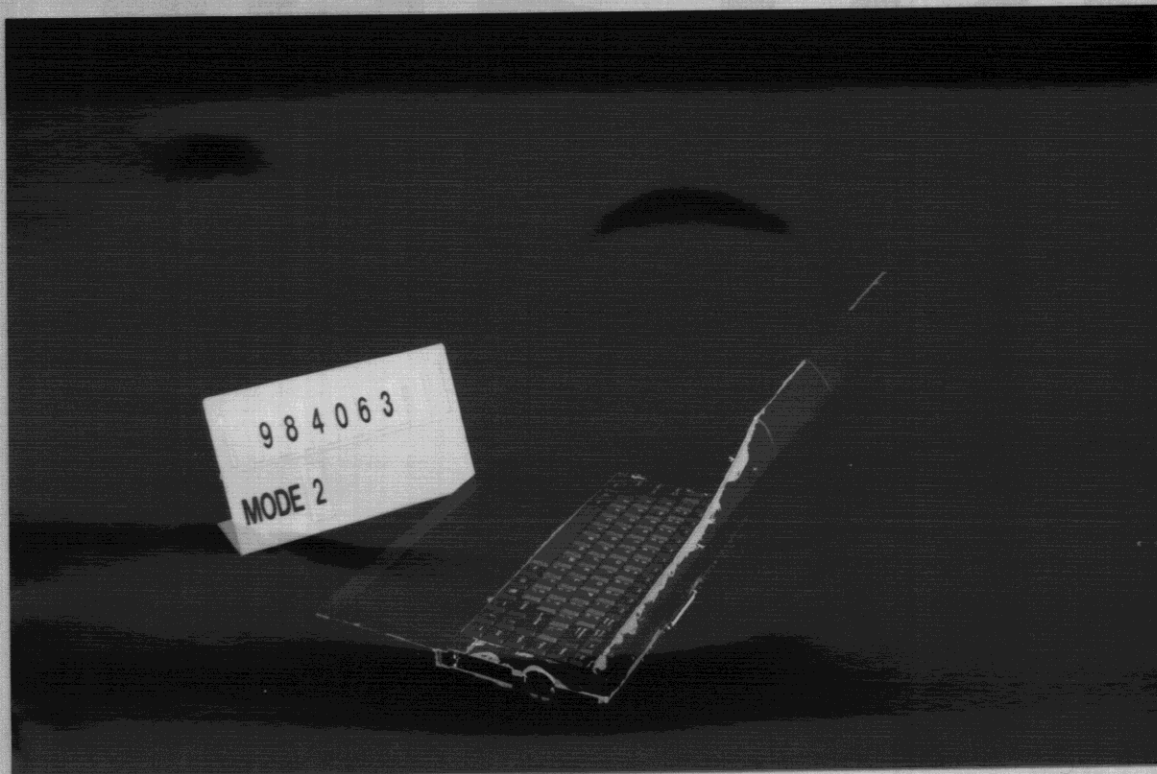
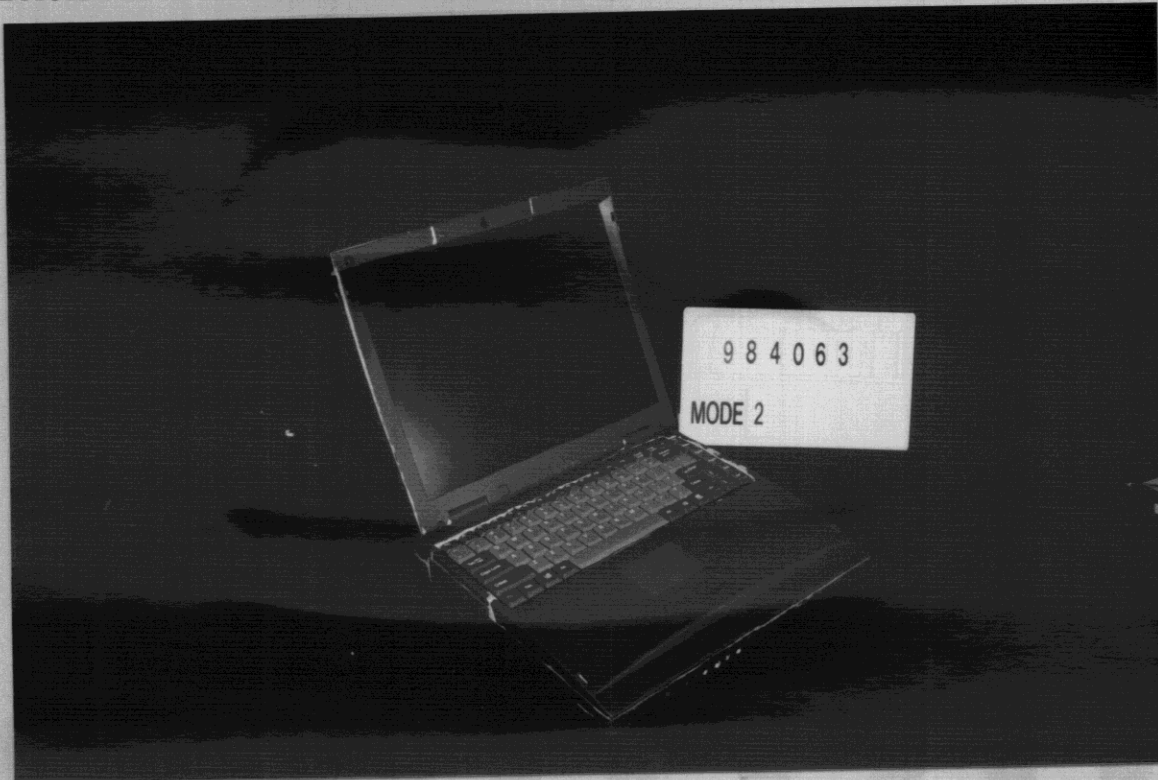
27. CHASSIS OF NOTEBOOK (Mode 1)

28. CHASSIS OF NOTEBOOK (Mode 1)

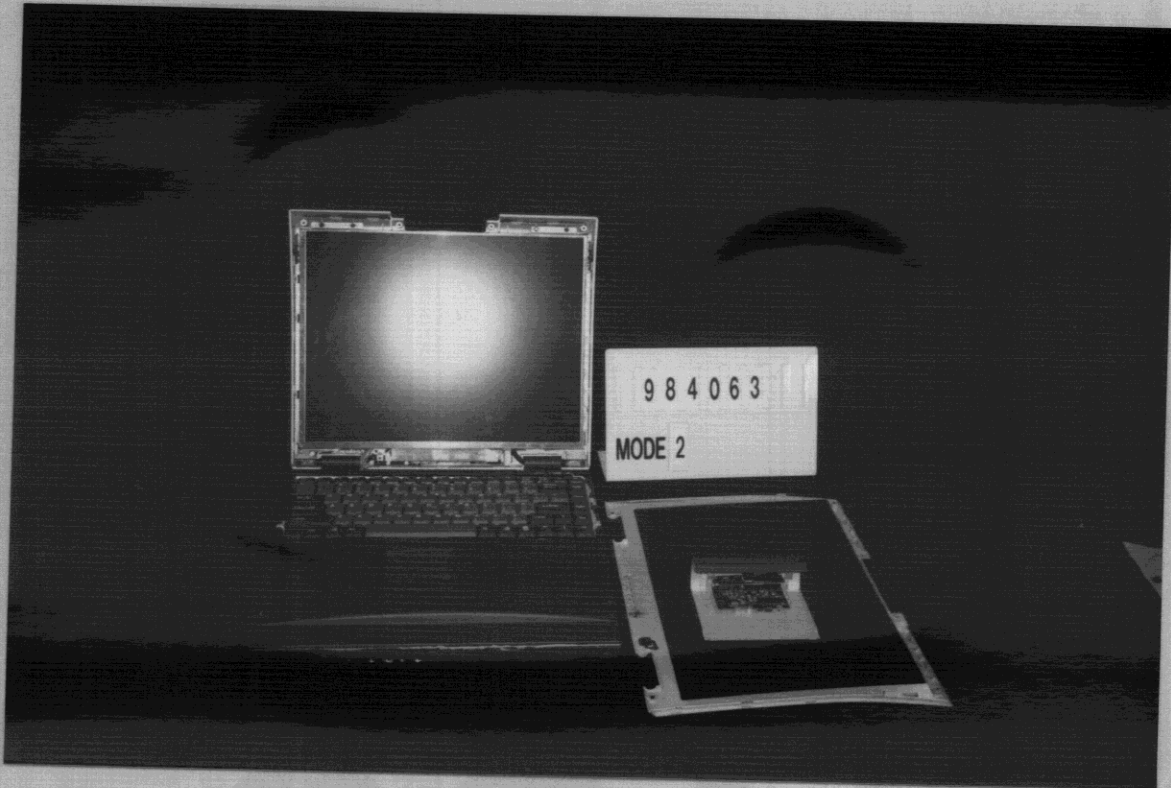


29. FRONT VIEW OF NOTEBOOK COMPUTER (Mode 2)

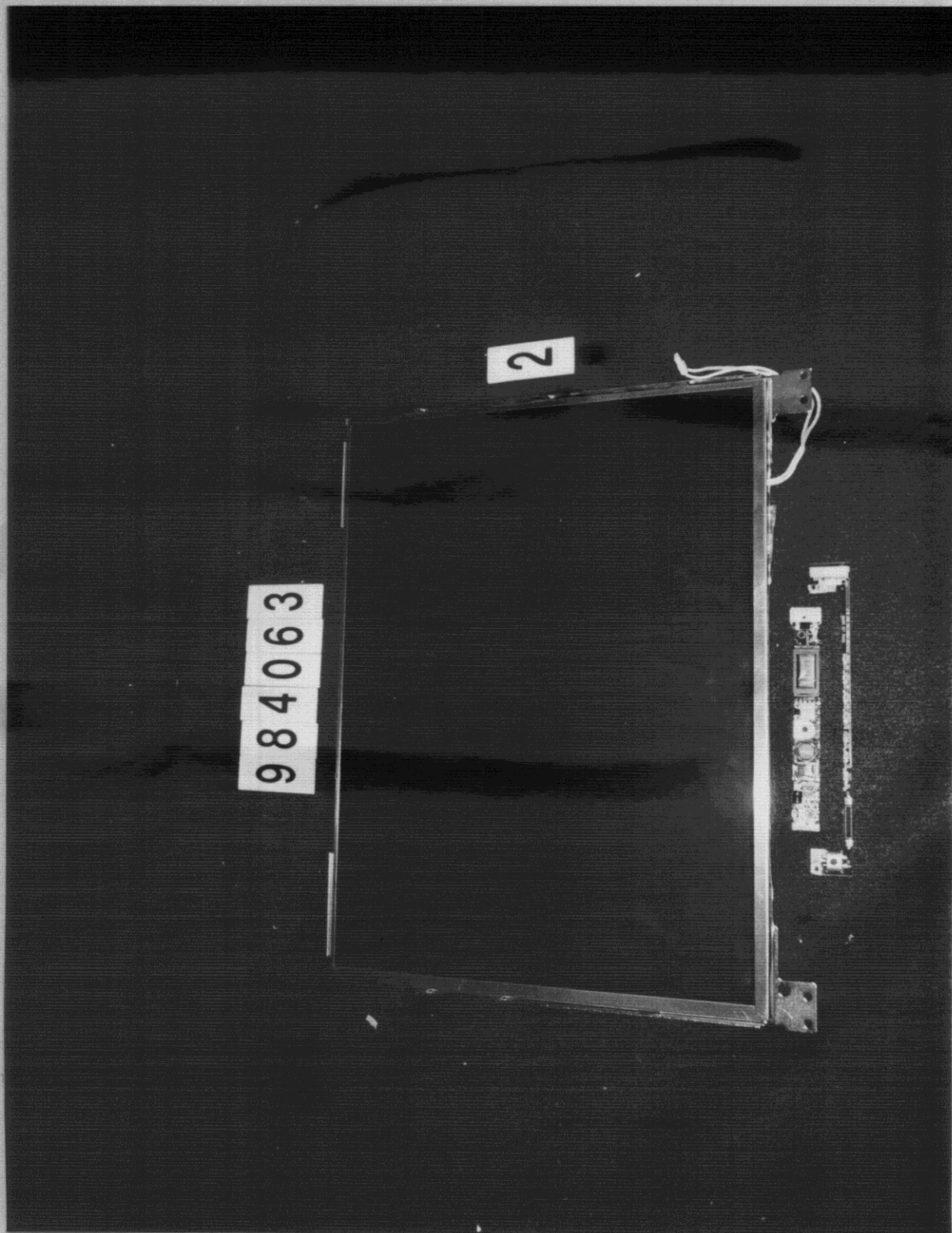
30. BACK VIEW OF NOTEBOOK COMPUTER (Mode 2)



31. INNER VIEW OF PANEL (Mode 2)



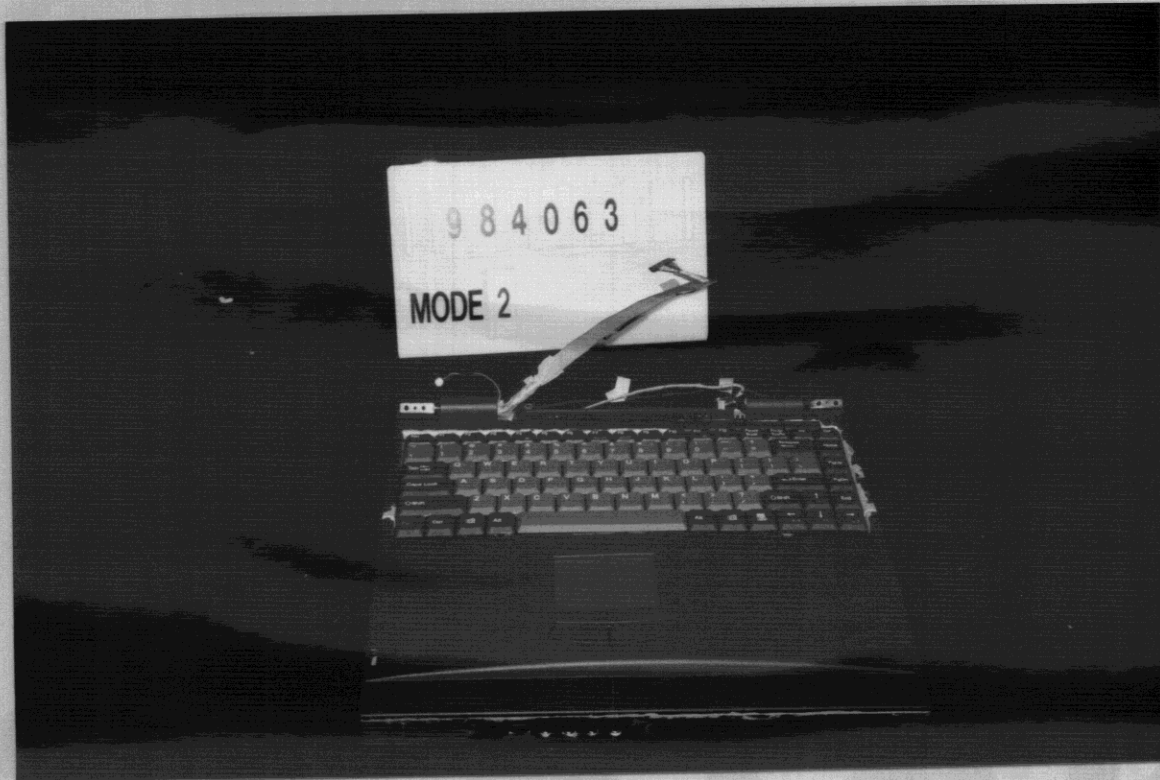
32. INNER VIEW OF PANEL AND COMPONENT SIDE OF INVERTOR BOARD & LVDS BOARD (Mode 2)



33. INNER VIEW OF PANEL AND SOLDER SIDE OF INVERTOR BOARD & LVDS BOARD (Mode 2)



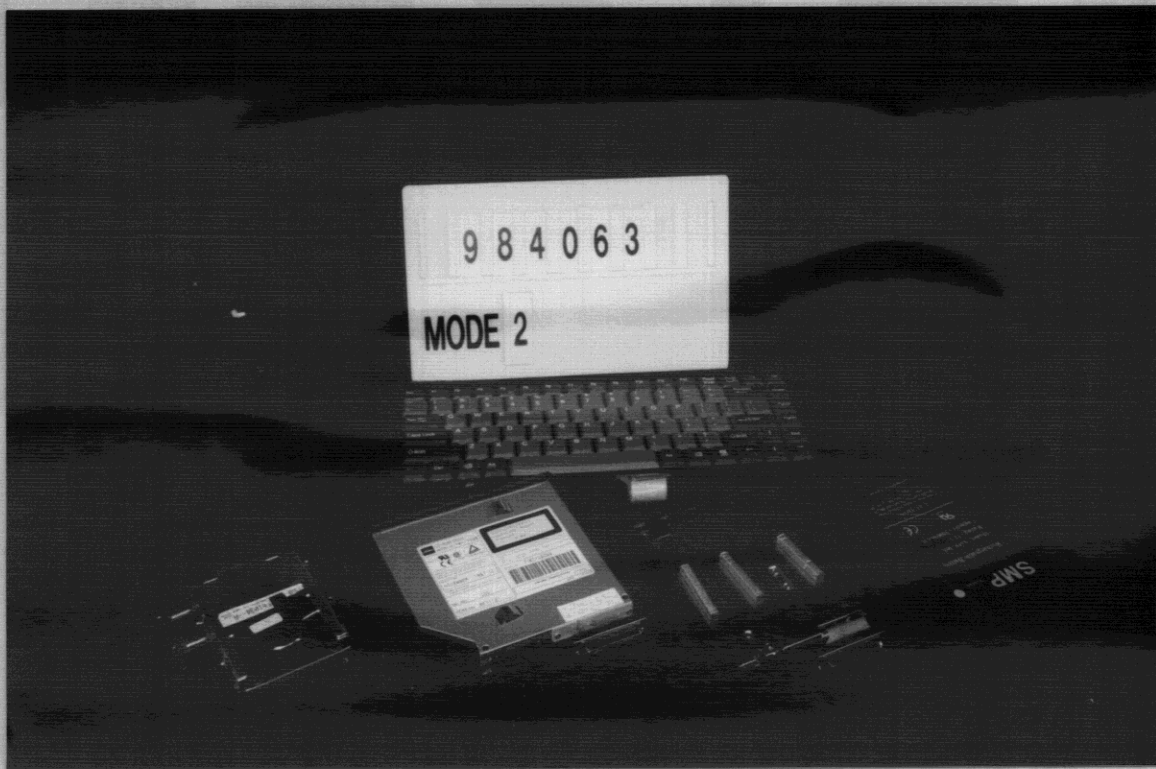
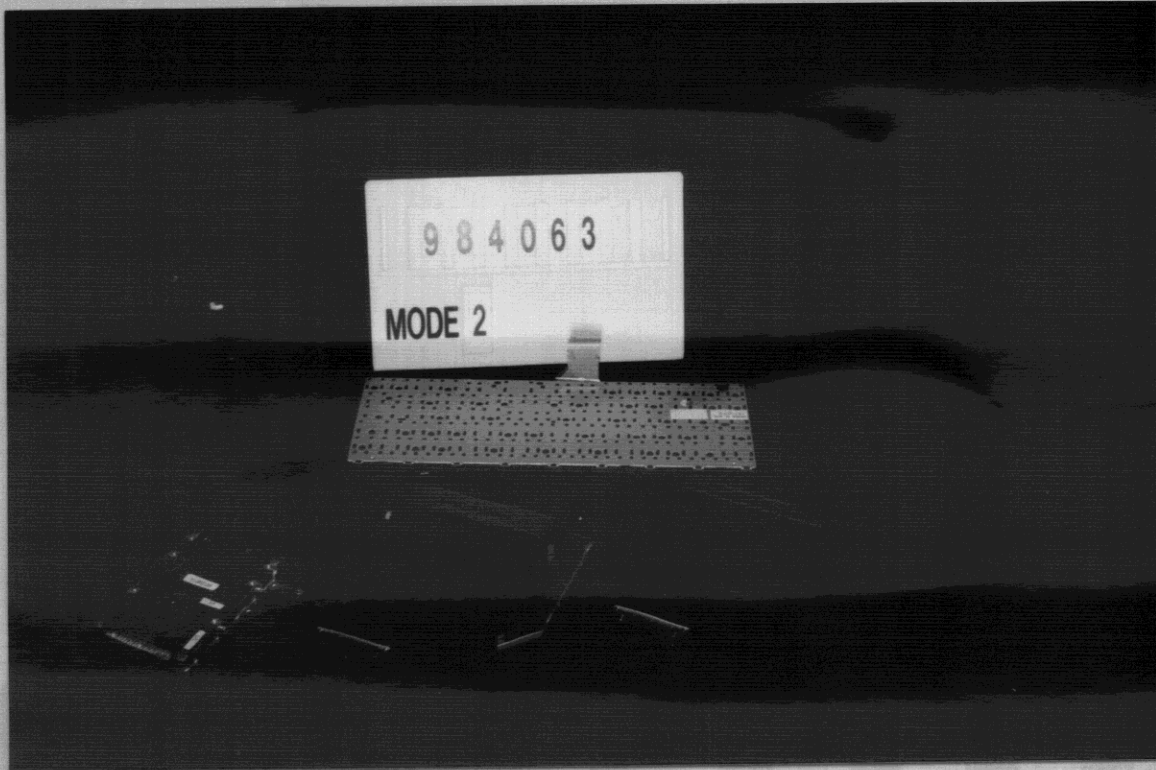
34. FRONT VIEW OF KEYBOARD (Mode 2)



GESTEK

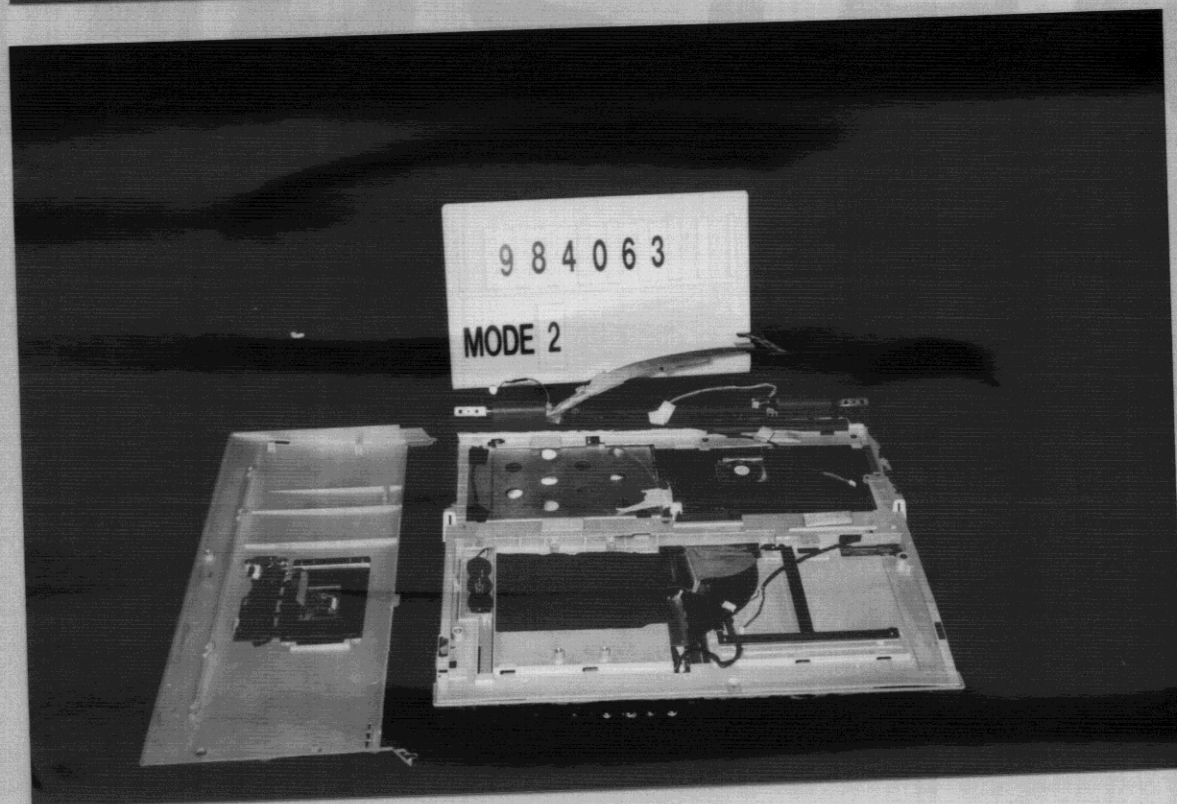
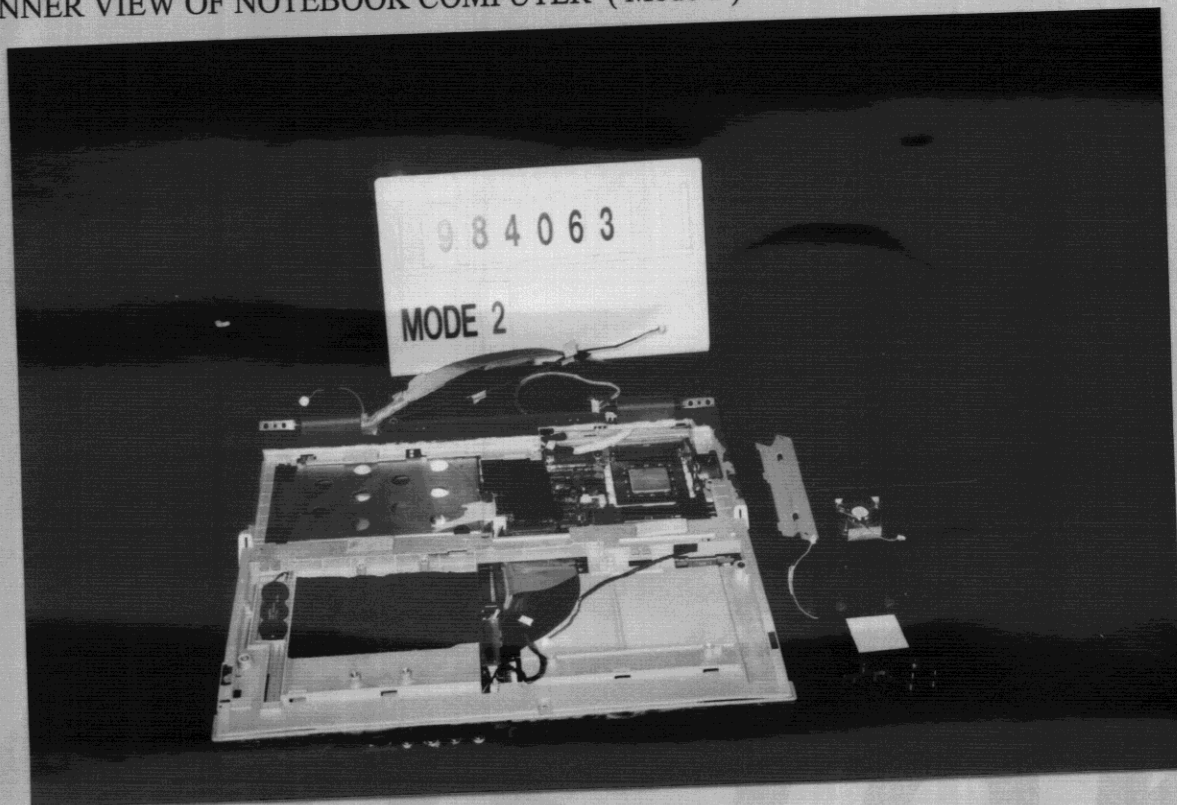
35. FRONT VIEW OF KEYBOARD, HDD, CD-ROM, FDD, BATTERY (Mode 2)

36. BACK VIEW OF KEYBOARD, HDD, CD-ROM, FDD, BATTERY (Mode 2)

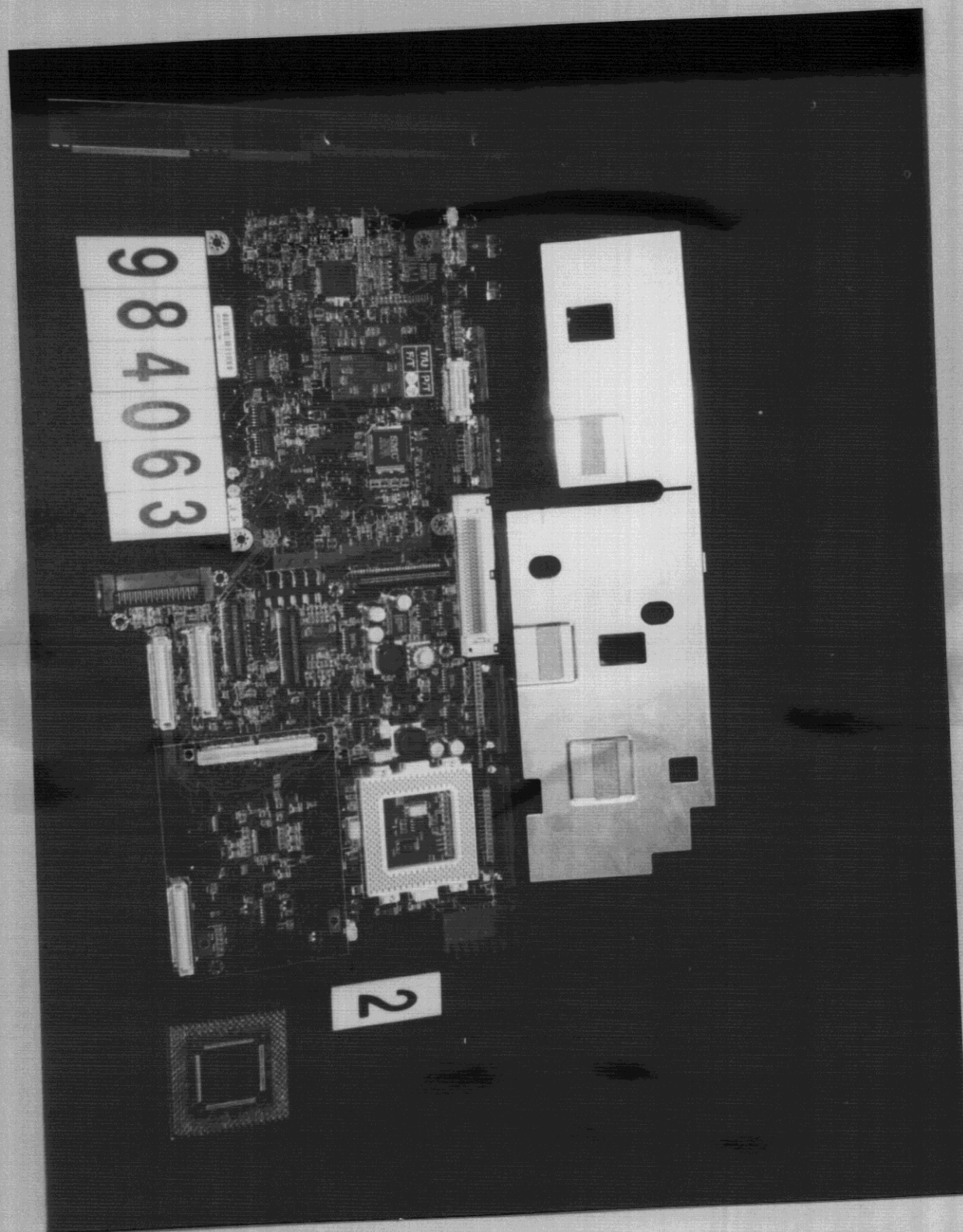


37. INNER VIEW OF NOTEBOOK COMPUTER (Mode 2)

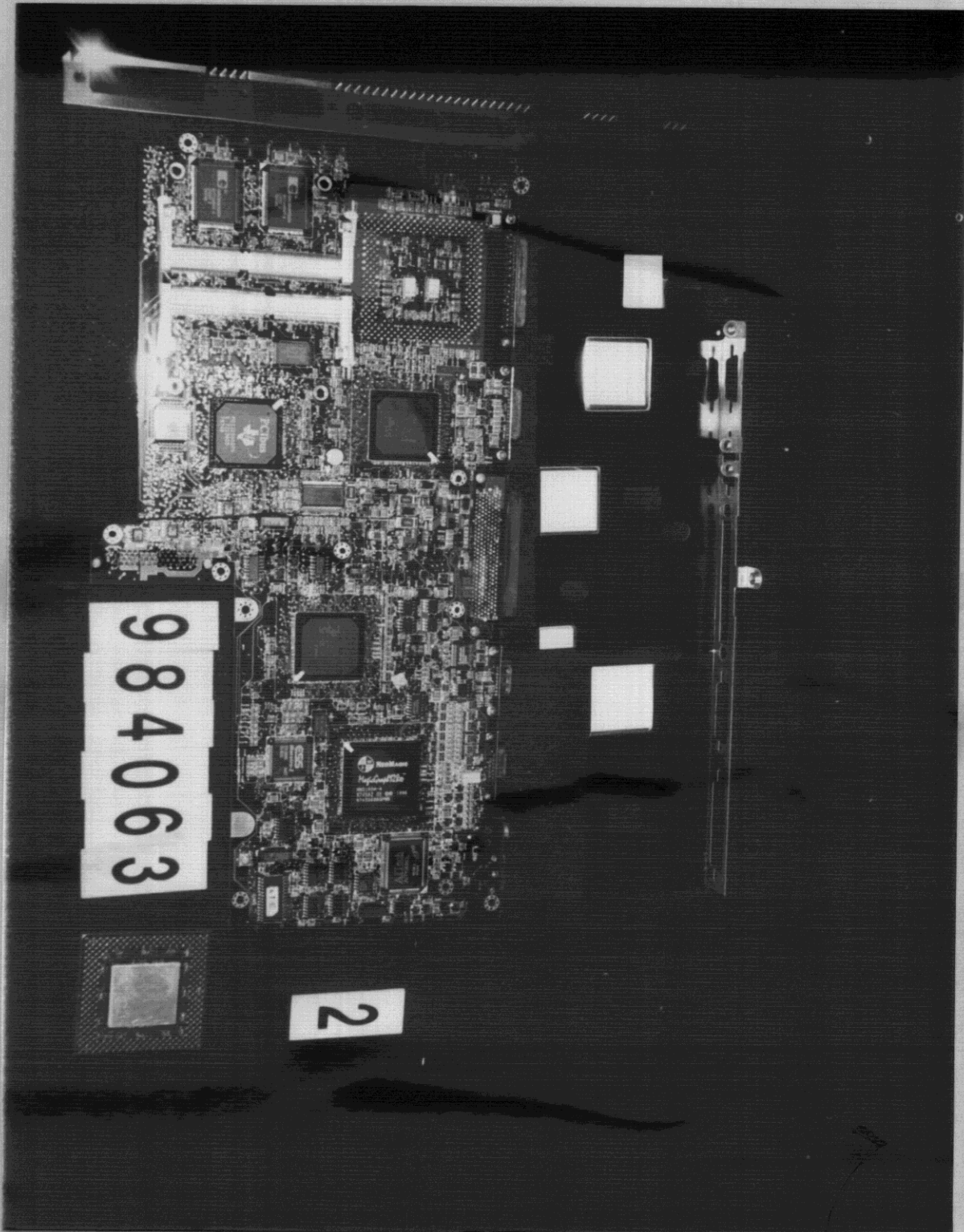
38. INNER VIEW OF NOTEBOOK COMPUTER (Mode 2)



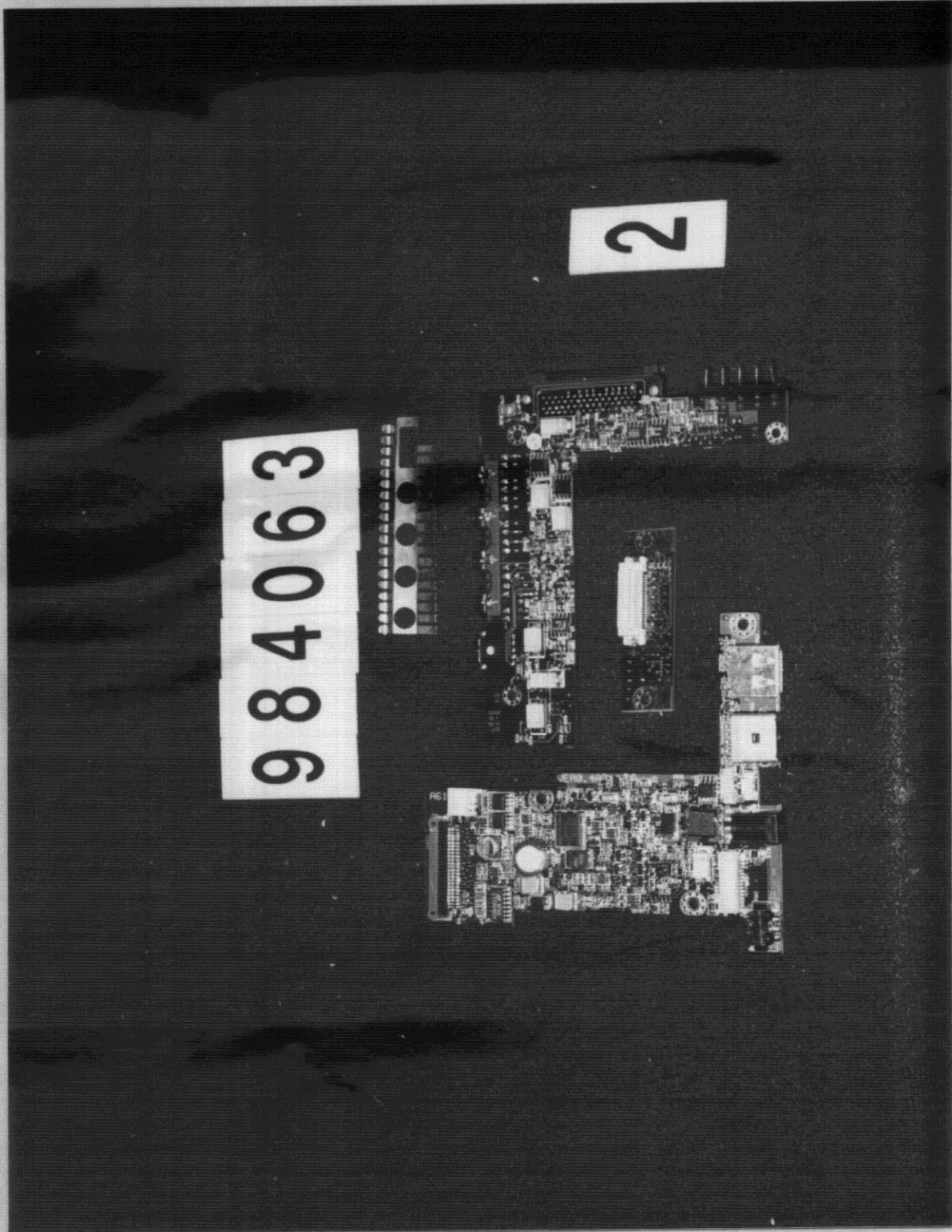
39. CPU AND COMPONENT SIDE OF MAIN BOARD (Mode 2)



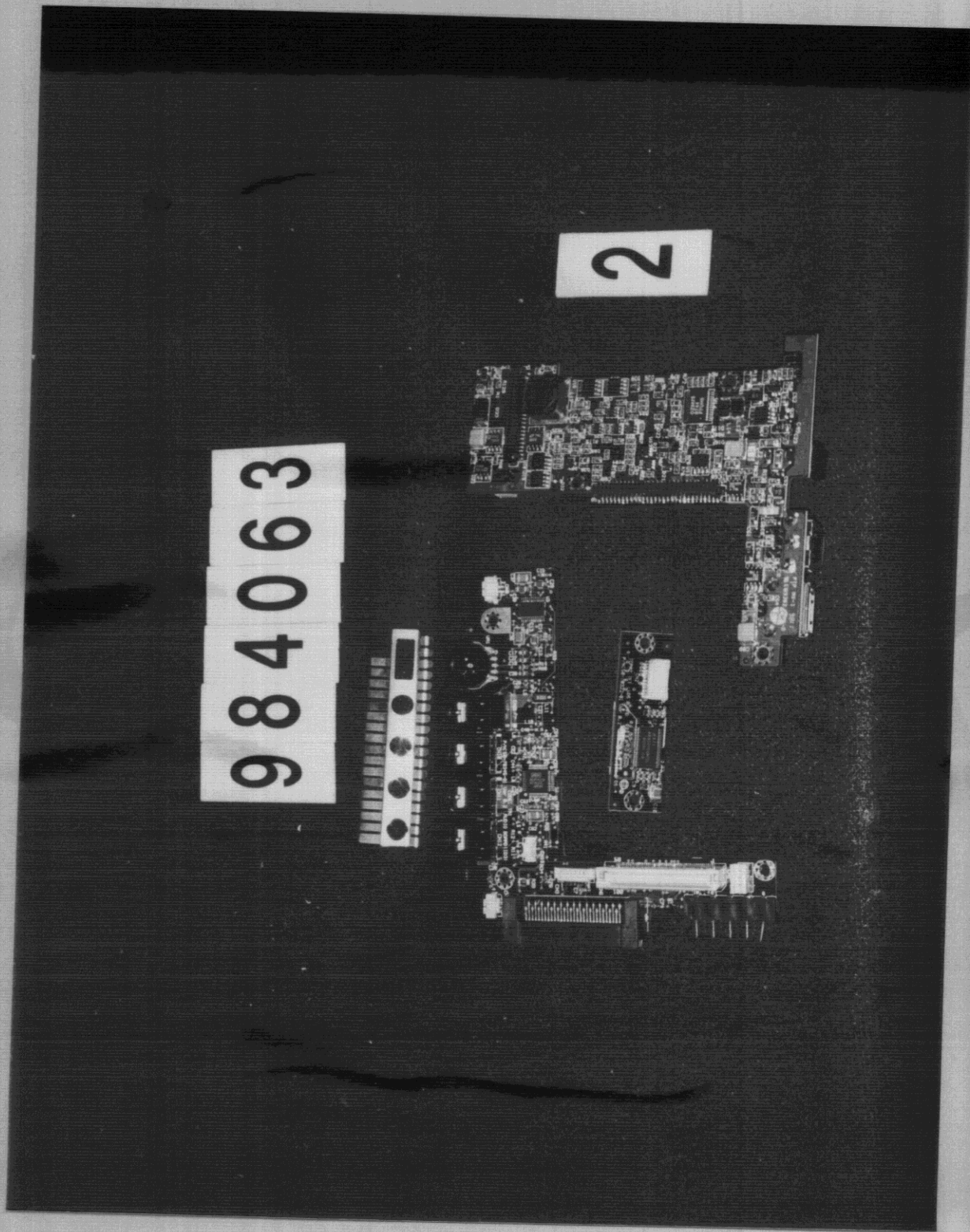
40. CPU AND SOLDER SIDE OF MAIN BOARD (Mode 2)



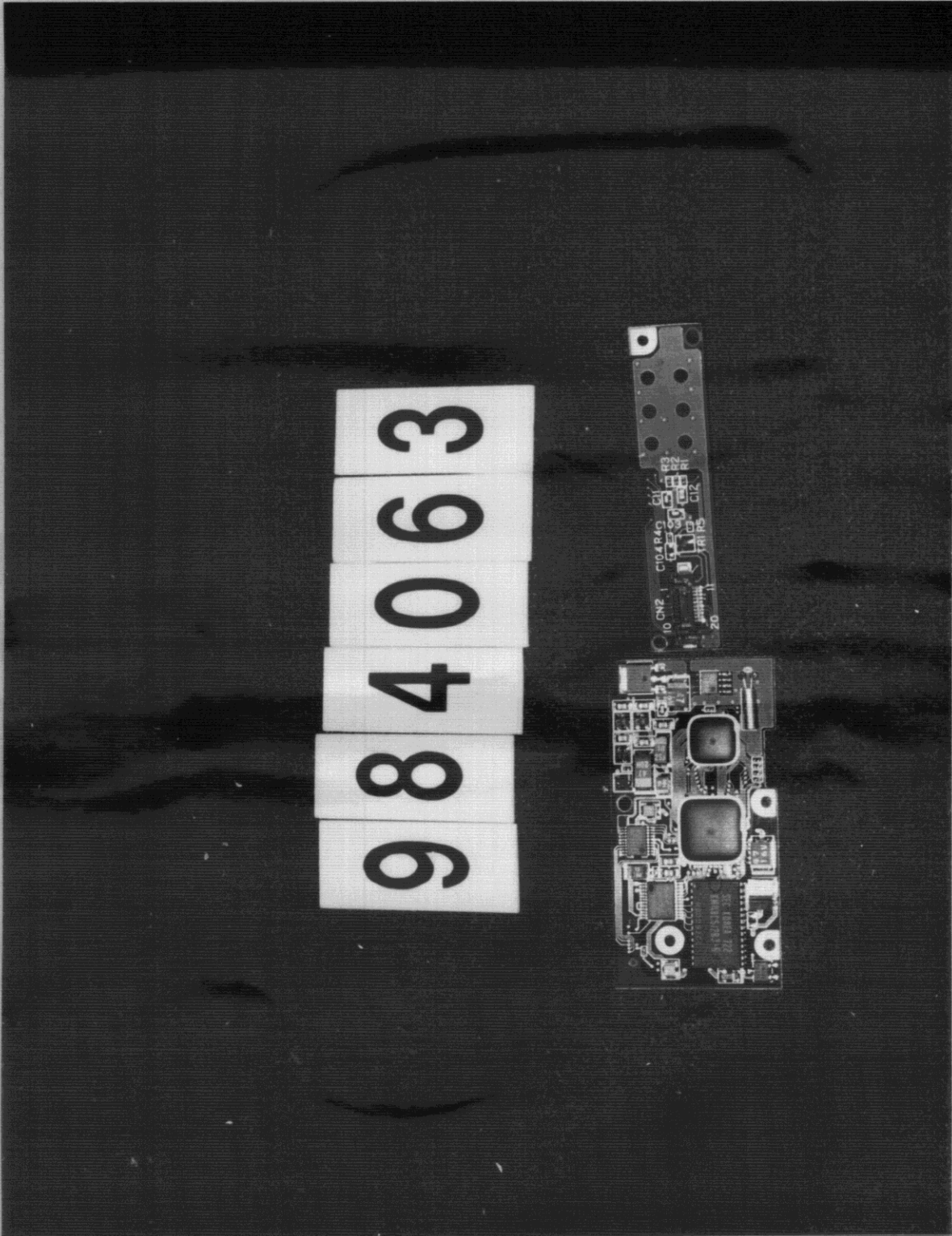
41. COMPONENT SIDE DC TO DC, AUDIO AND LCD CABLE ADAPTOR (Mode 2)



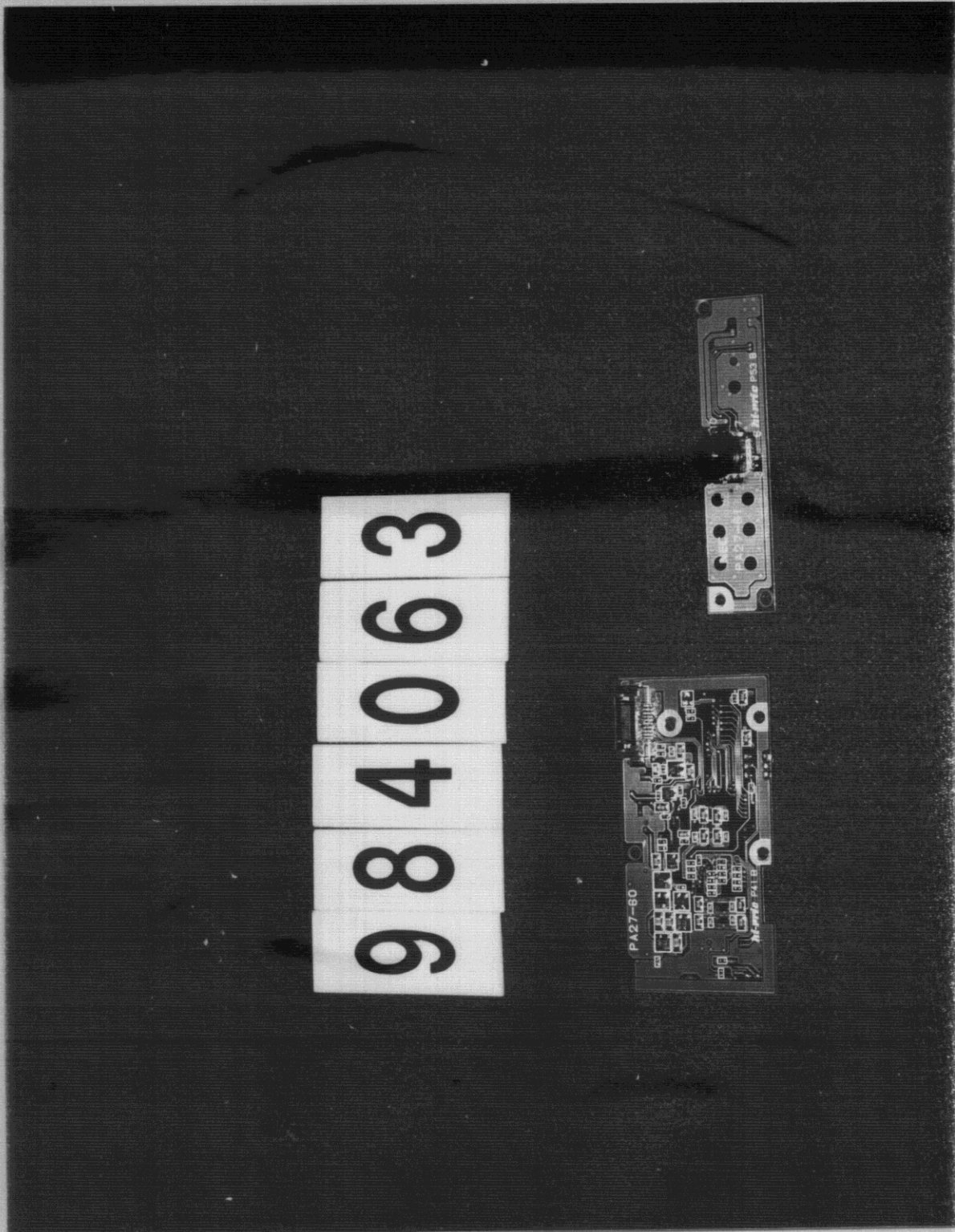
42. SOLDER SIDE DC TO DC, AUDIO AND LCD CABLE ADAPTOR (Mode 2)



43. COMPONENT SIDE CCD BOARD AND CCD (Mode 2)

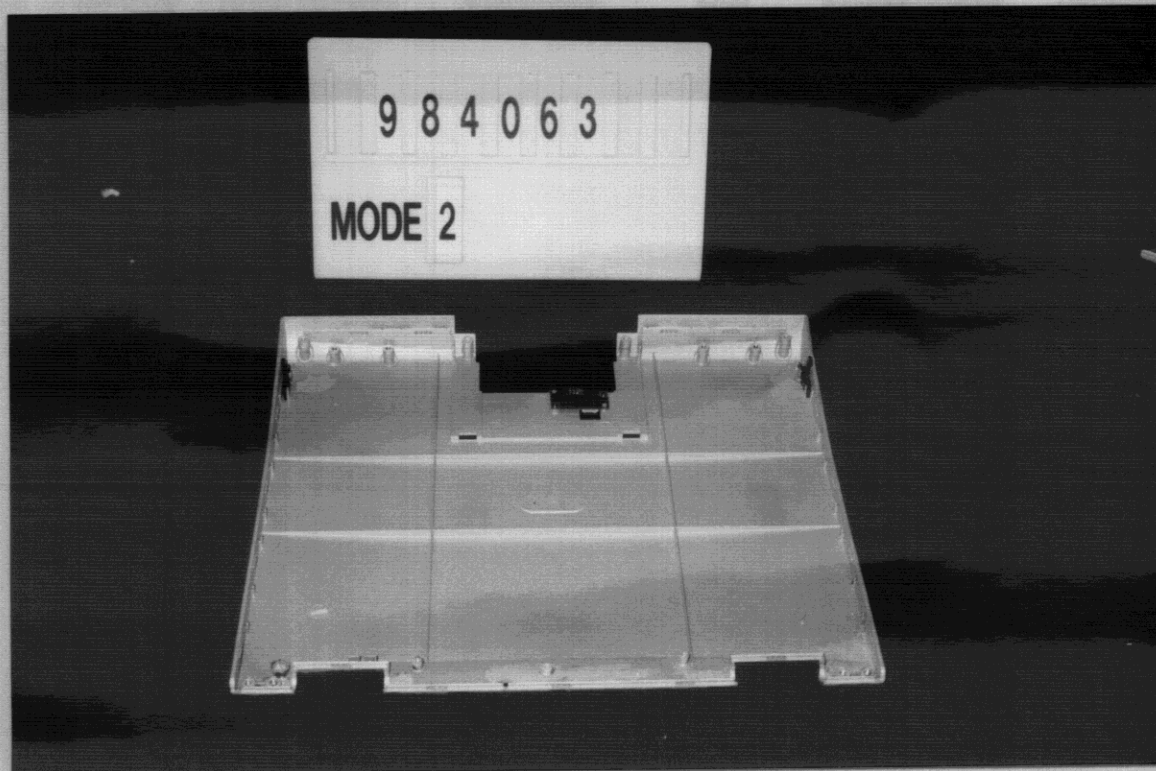
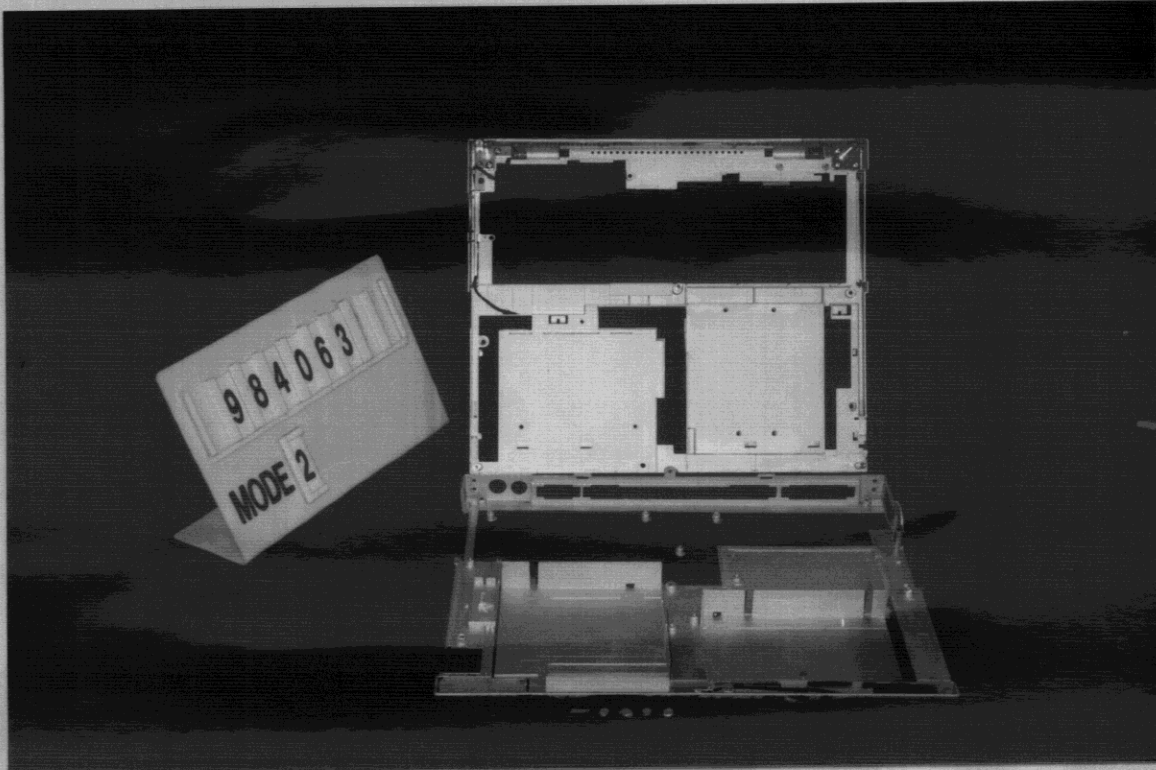


44. SOLDER SIDE CCD BOARD AND CCD (Mode 2)



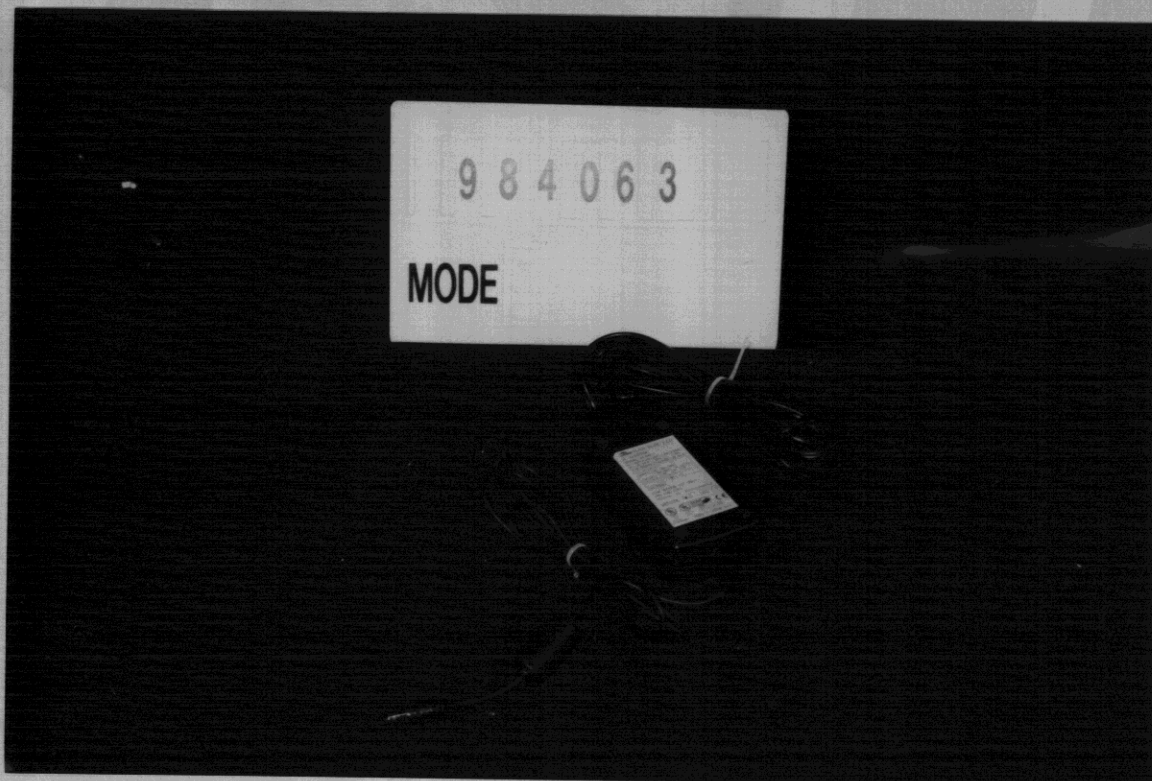
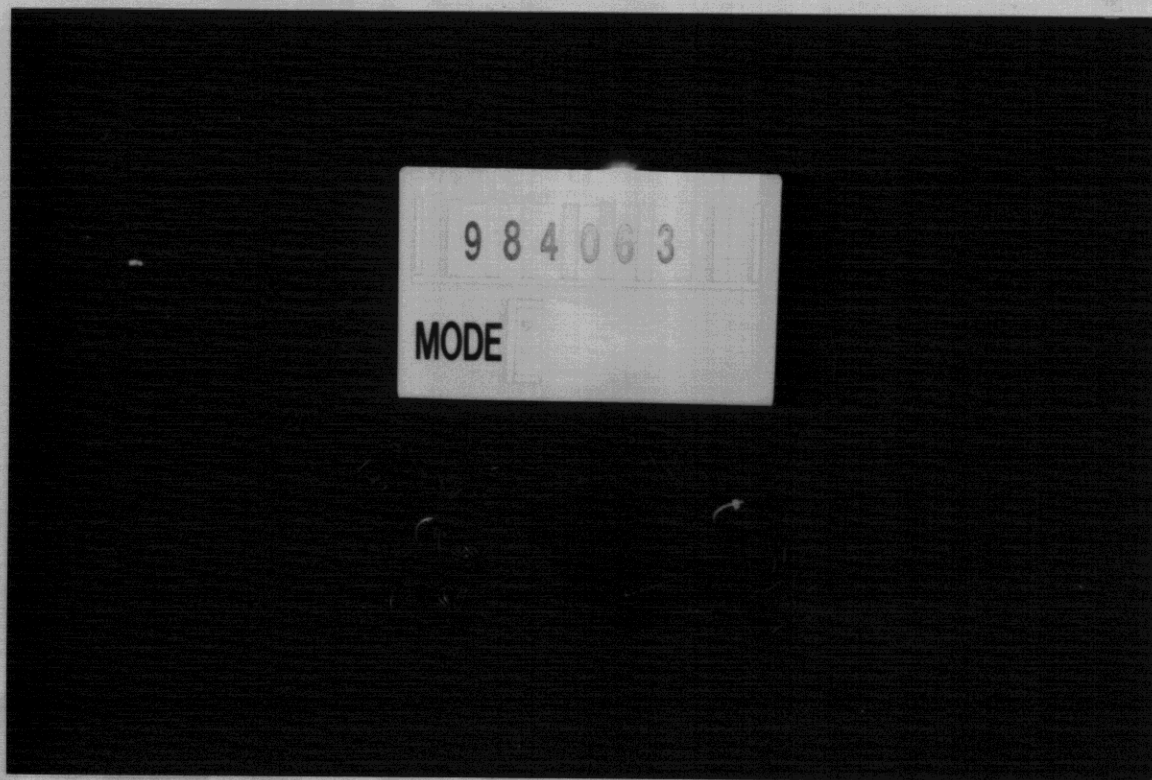
45. CHASSIS OF NOTEBOOK (Mode 2)

46. CHASSIS OF NOTEBOOK (Mode 2)



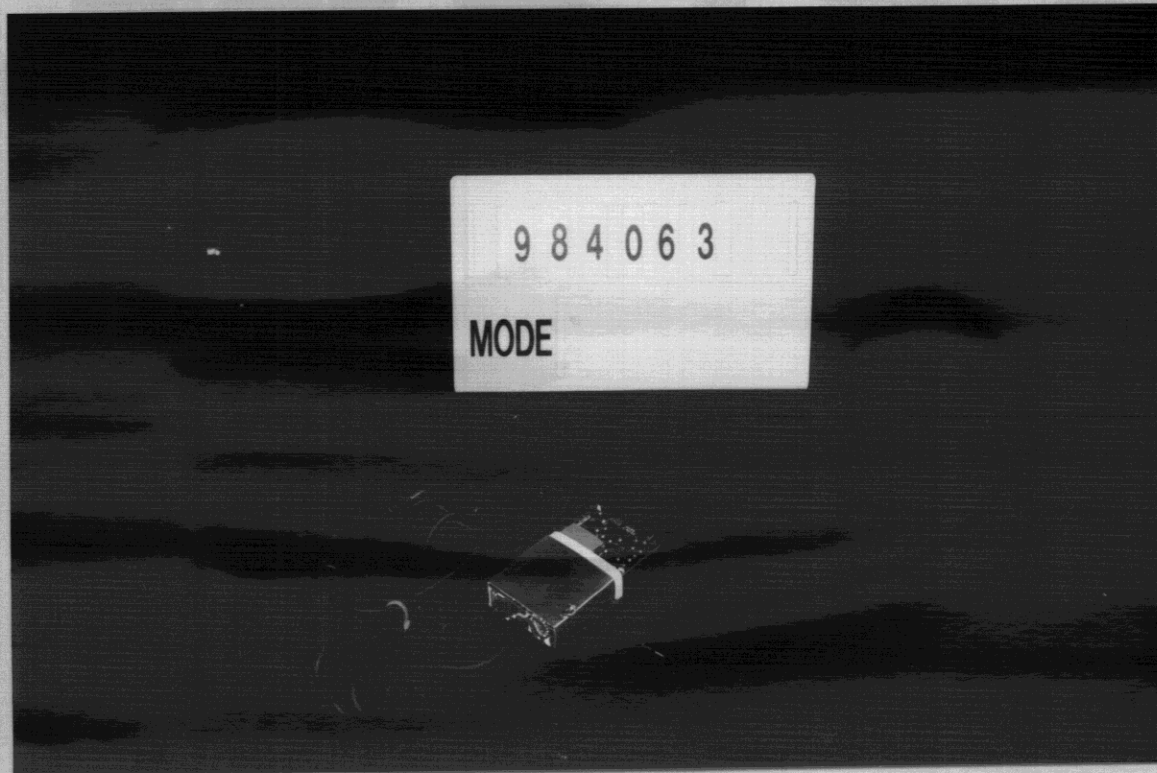
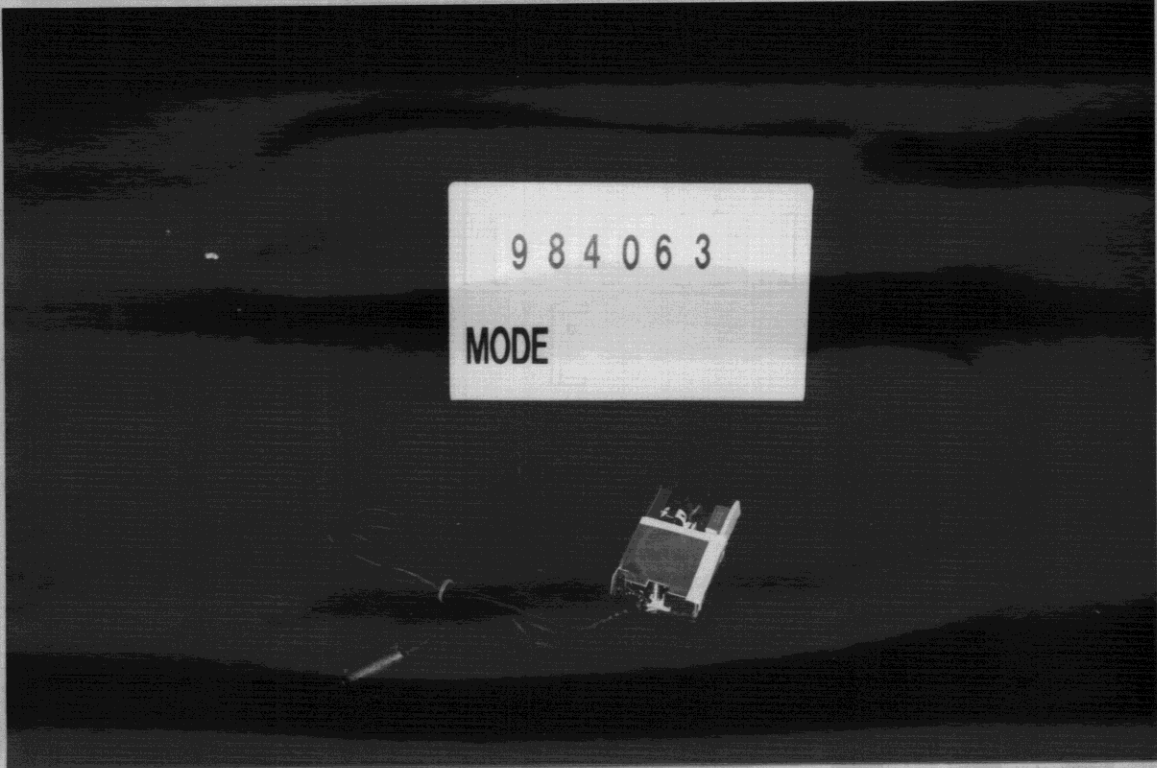
47. FRONT VIEW OF ADAPTOR

48. BACK VIEW OF ADAPTOR

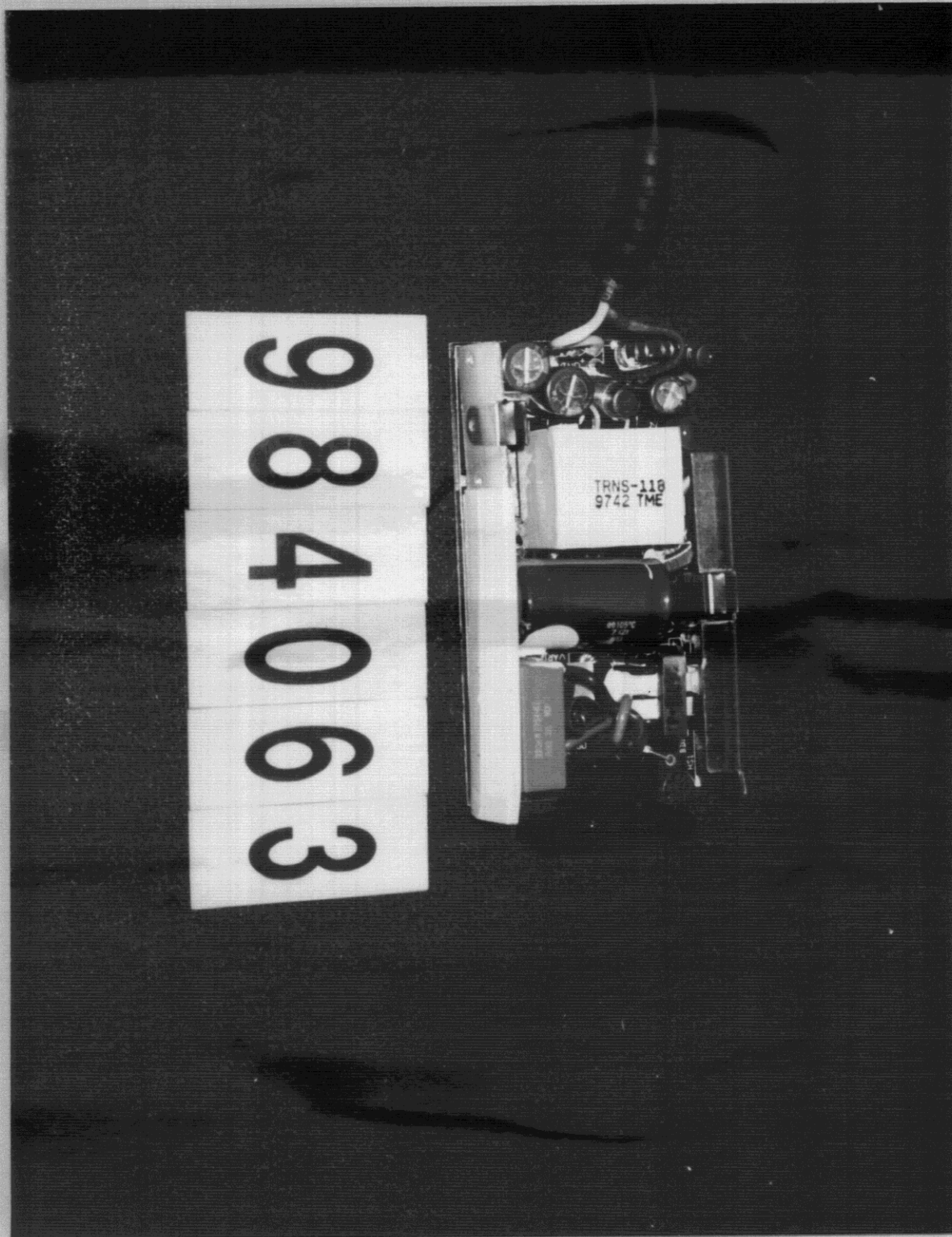


49. INNER VIEW OF ADAPTOR

50. INNER VIEW OF ADAPTOR



51. COMPONENT SIDE OF ADAPTOR



52. SOLDER SIDE OF ADAPTOR

