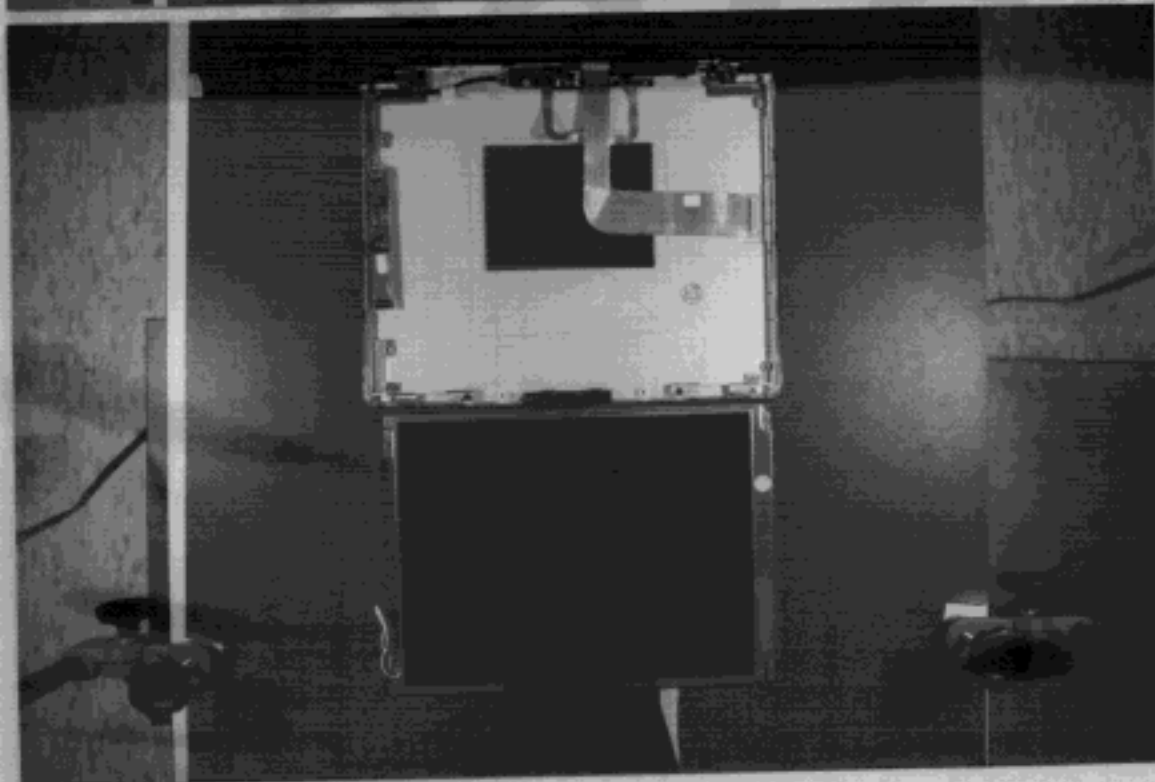
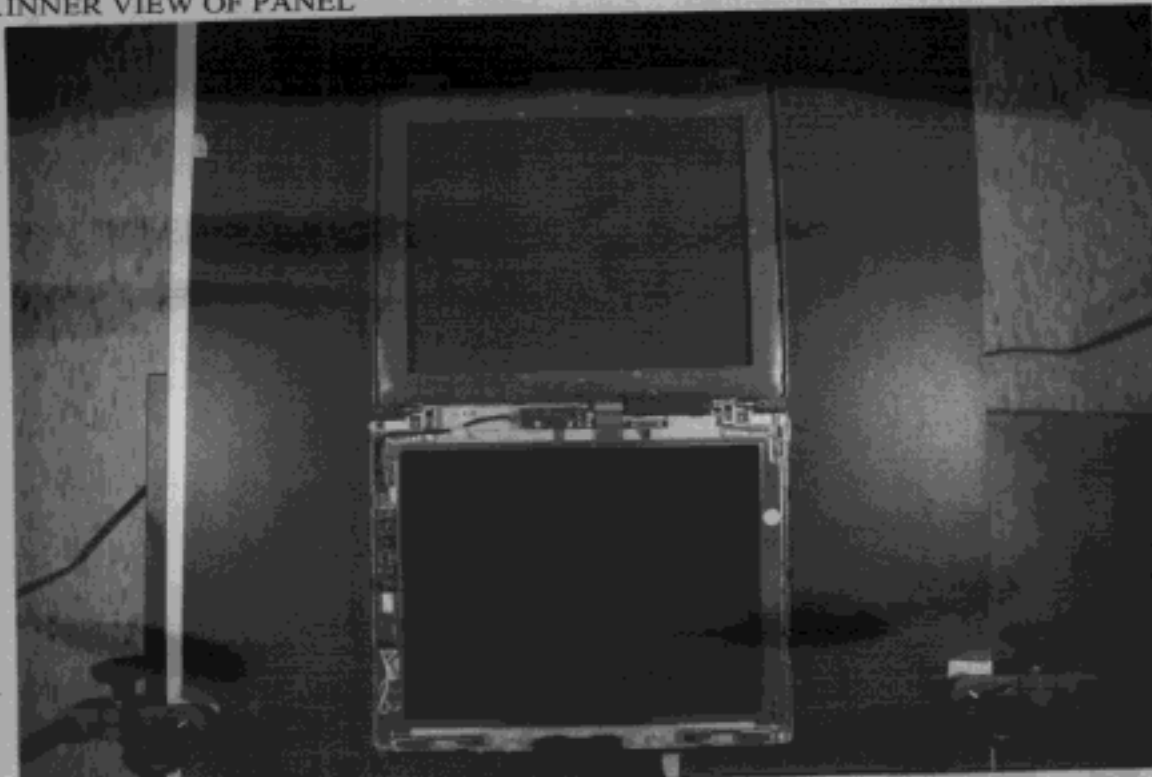


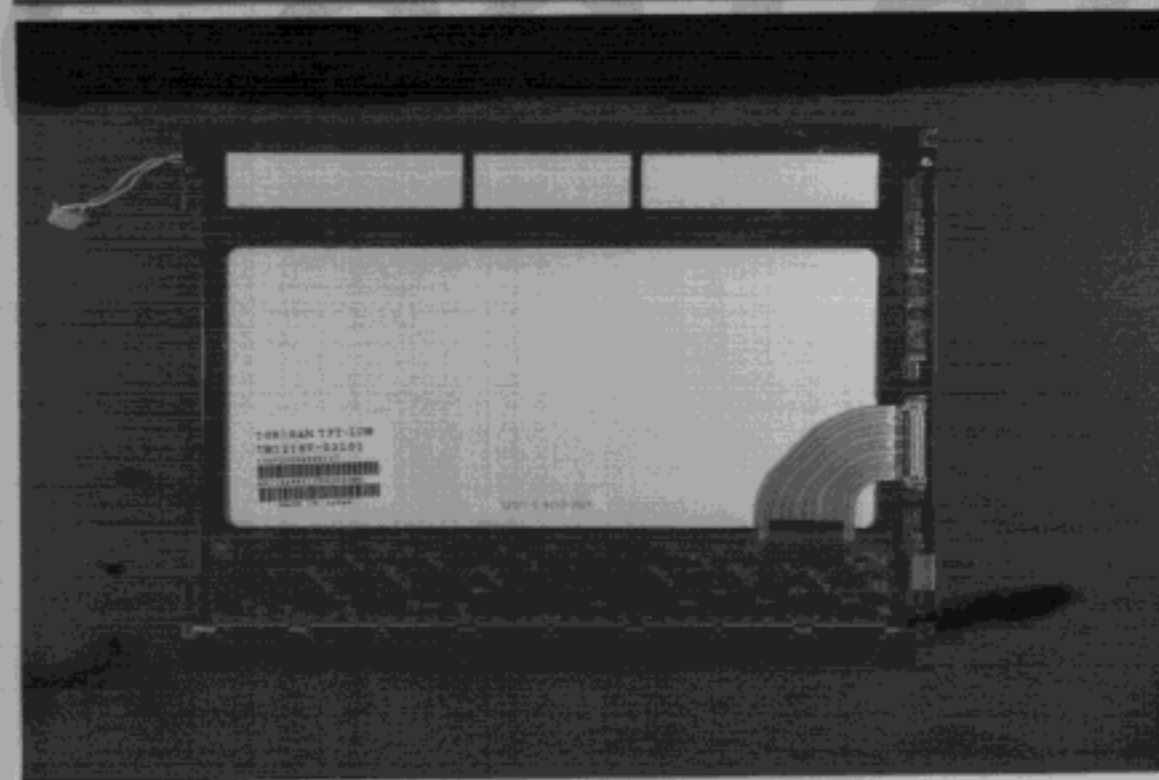
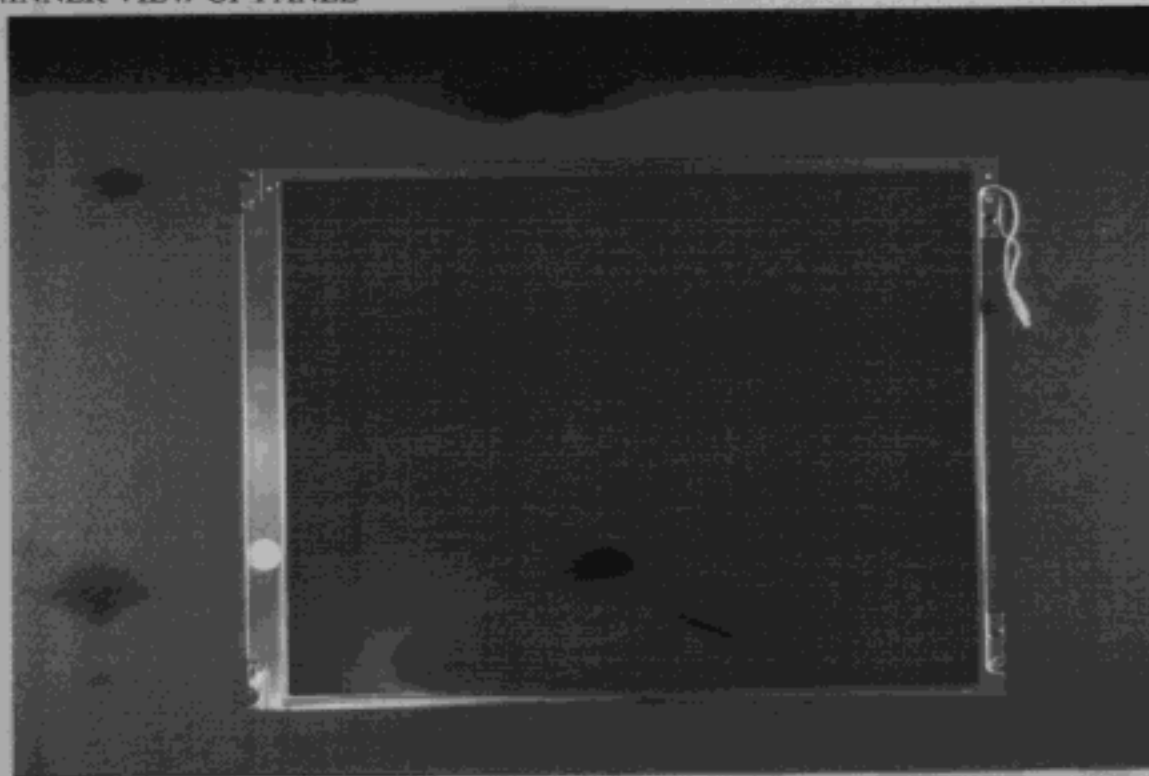
3.INNER VIEW OF PANEL

4.INNER VIEW OF PANEL



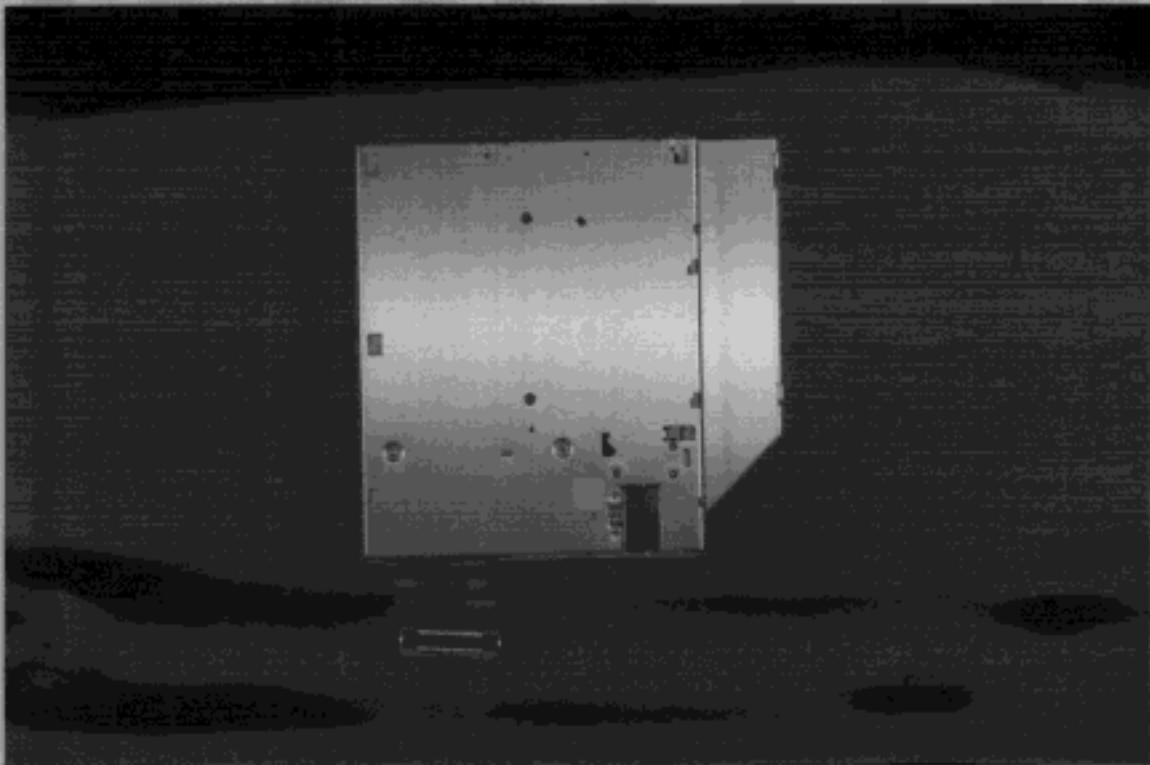
5.INNER VIEW OF PANEL

6.INNER VIEW OF PANEL

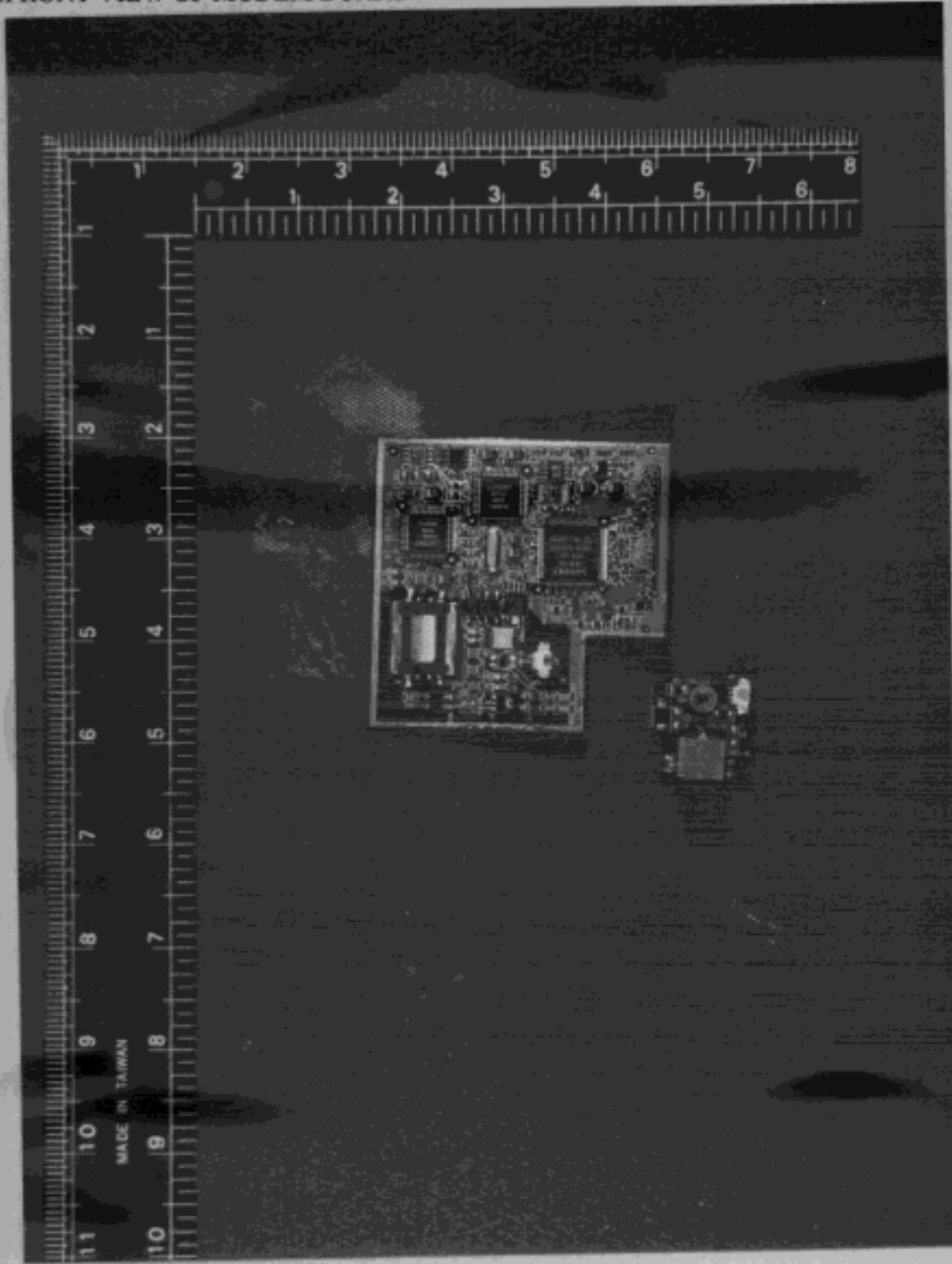


7.FRONT VIEW OF CD-ROM

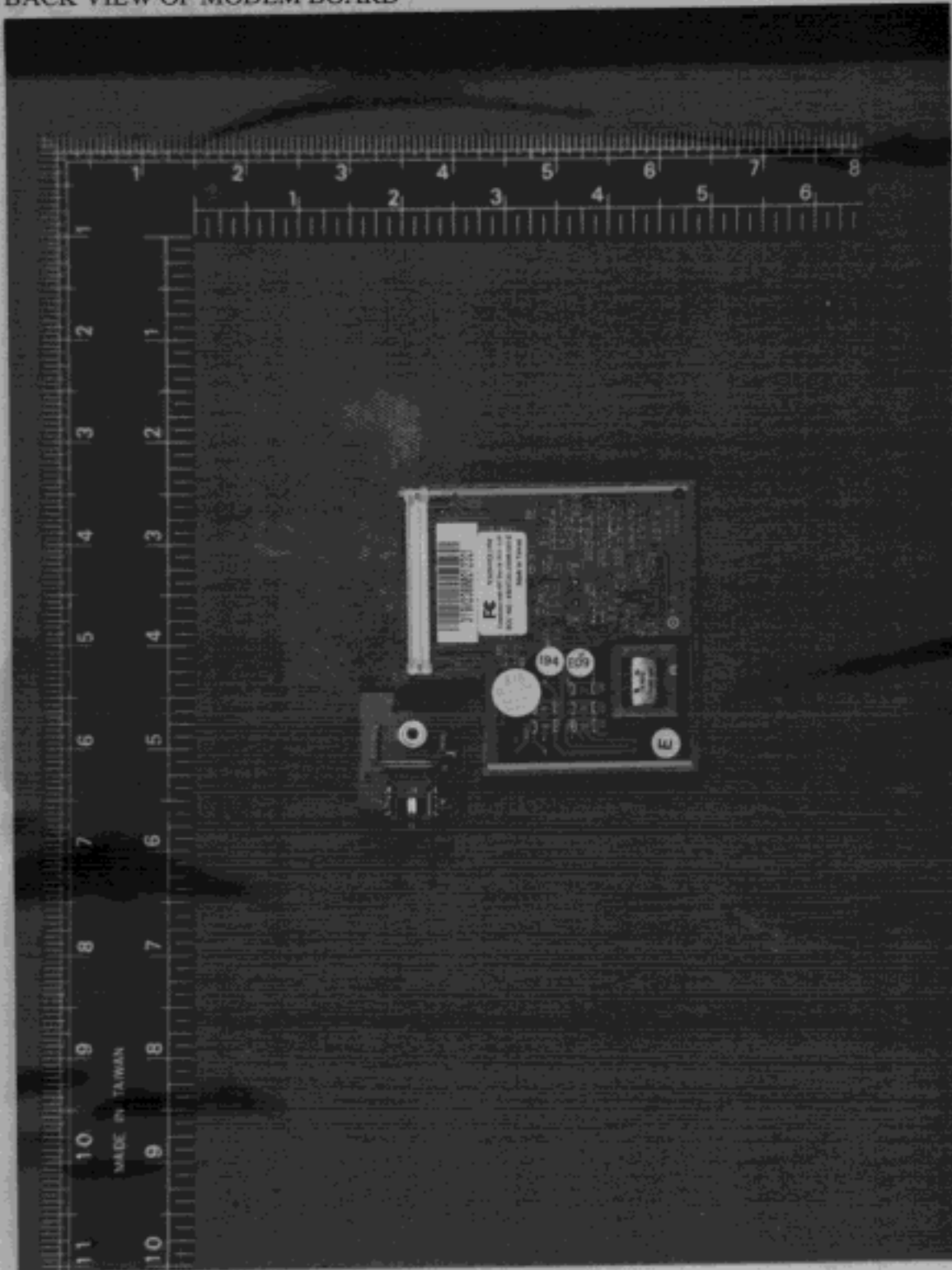
8.BACK VIEW OF CD-ROM



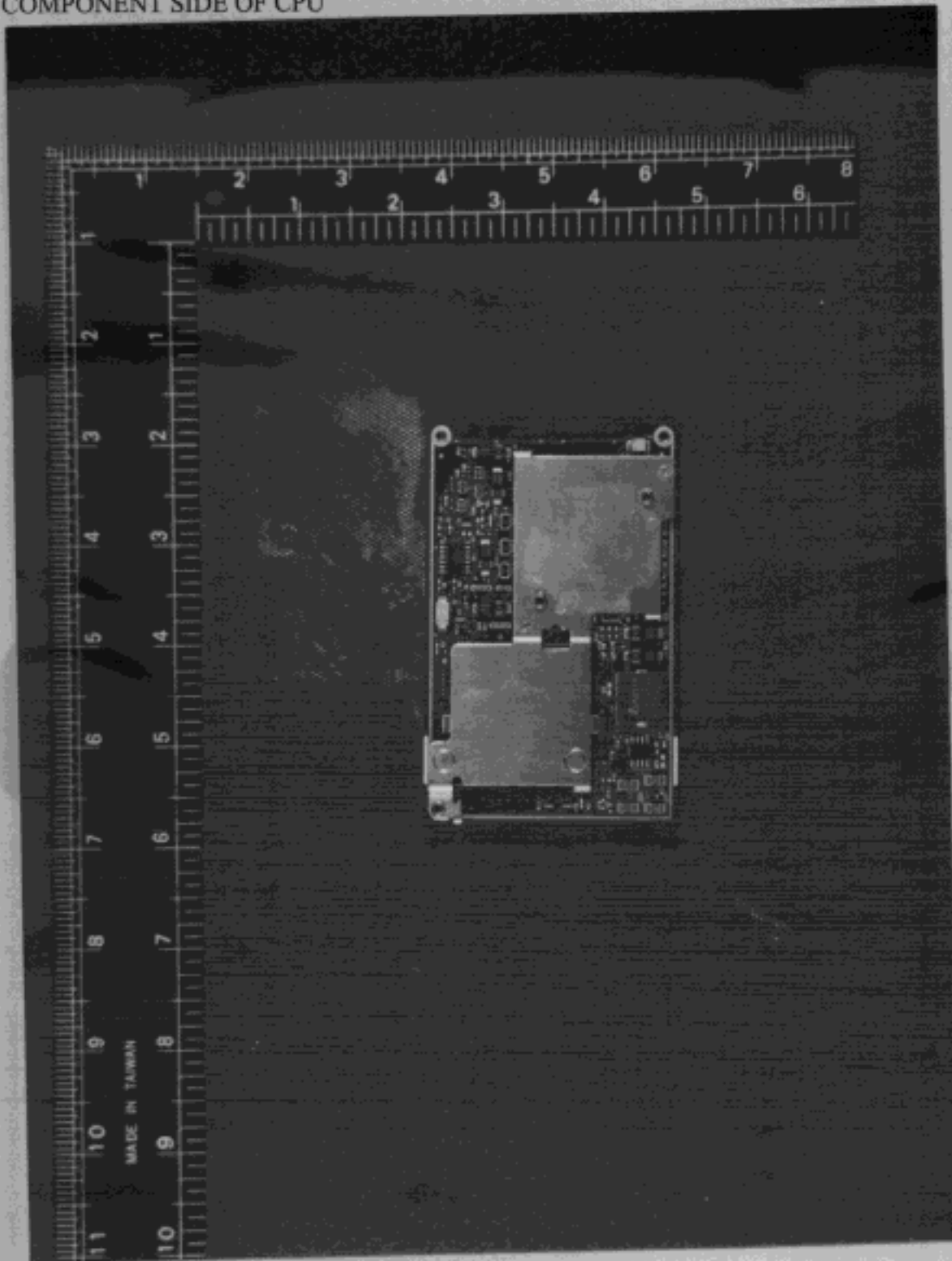
9.FRONT VIEW OF MODEM BOARD



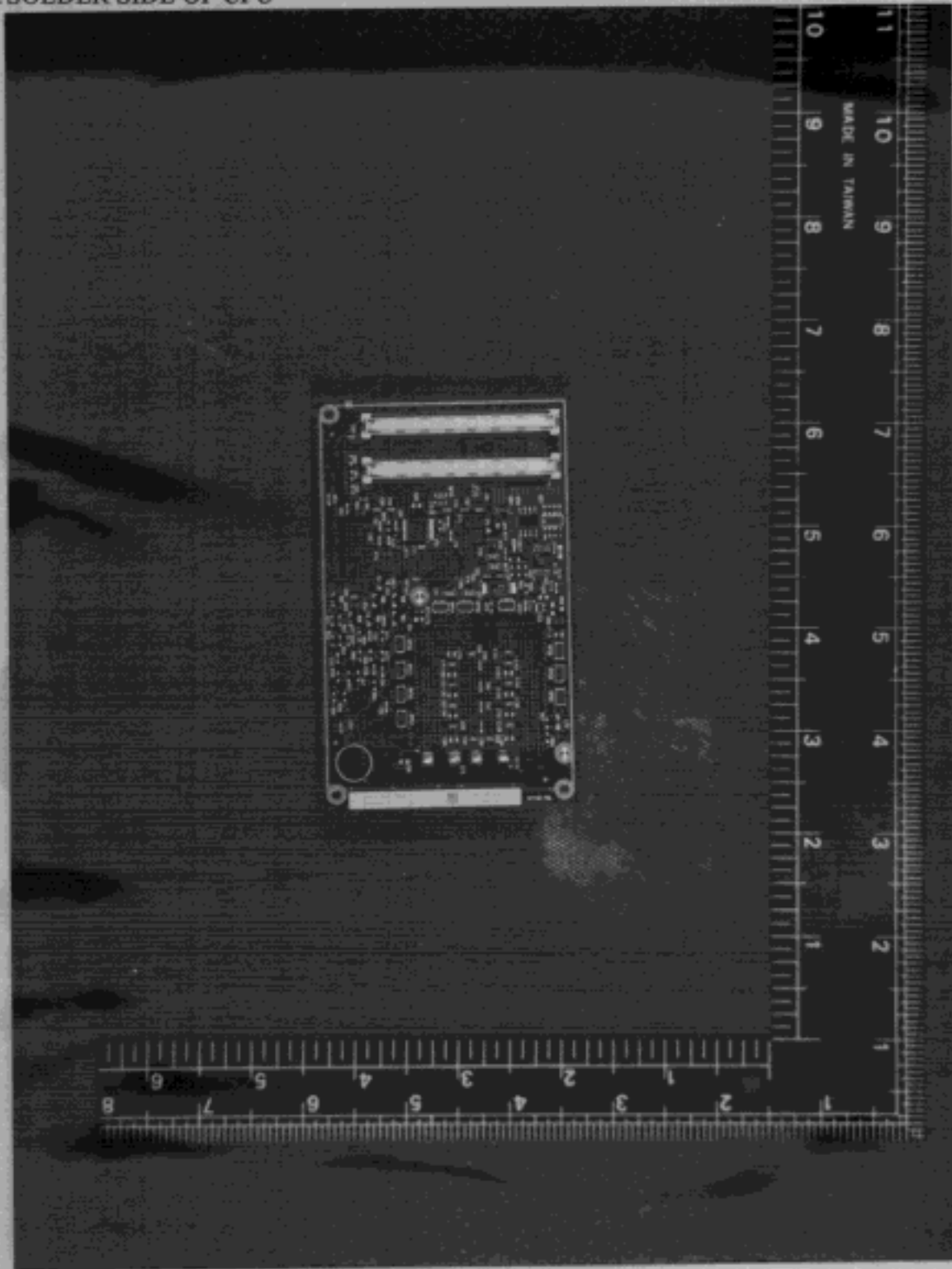
10. BACK VIEW OF MODEM BOARD



11. COMPONENT SIDE OF CPU

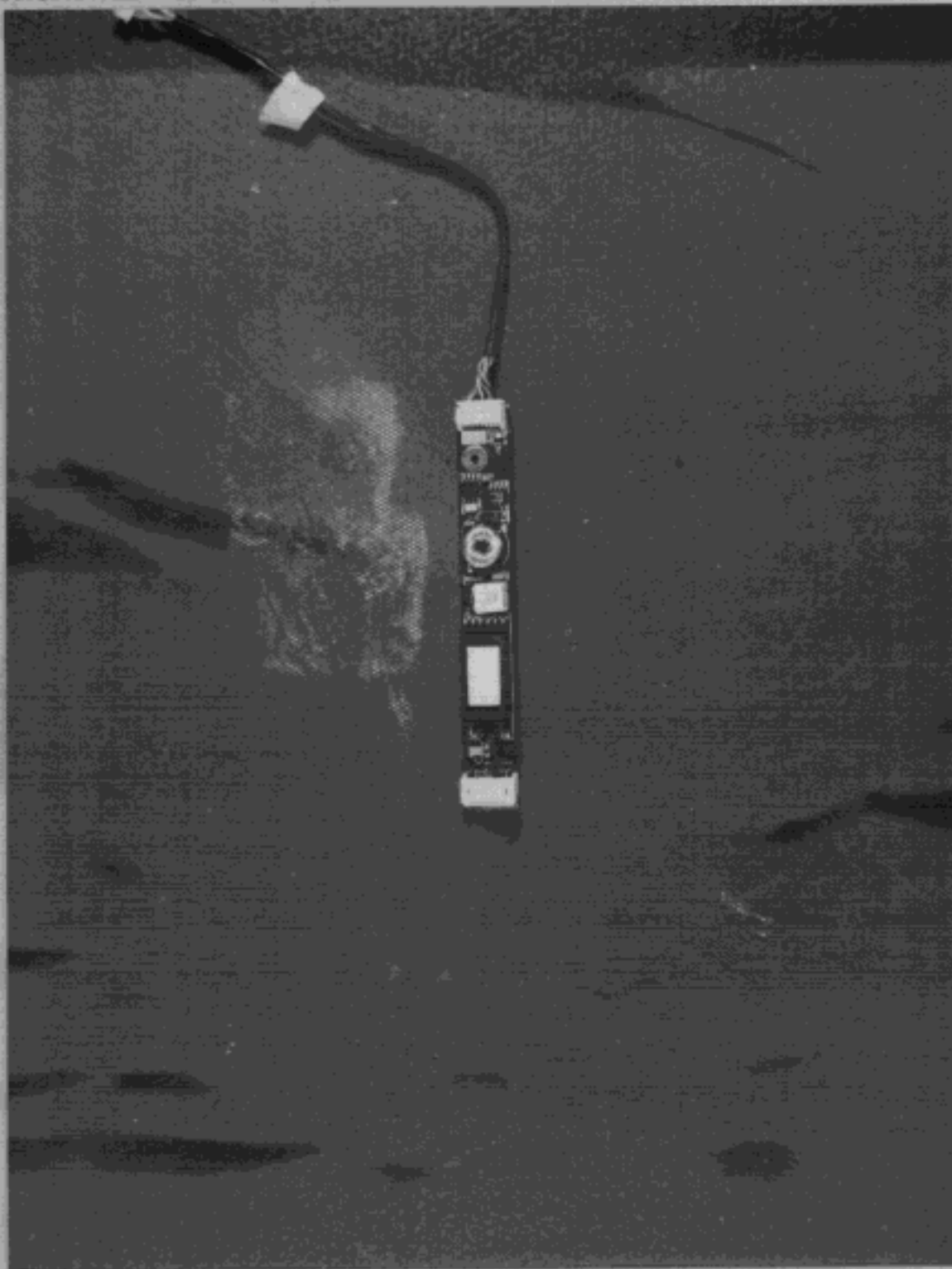


12. SOLDER SIDE OF CPU





13. FRONT VIEW OF INVERTER





14. BACK VIEW OF INVERTER

