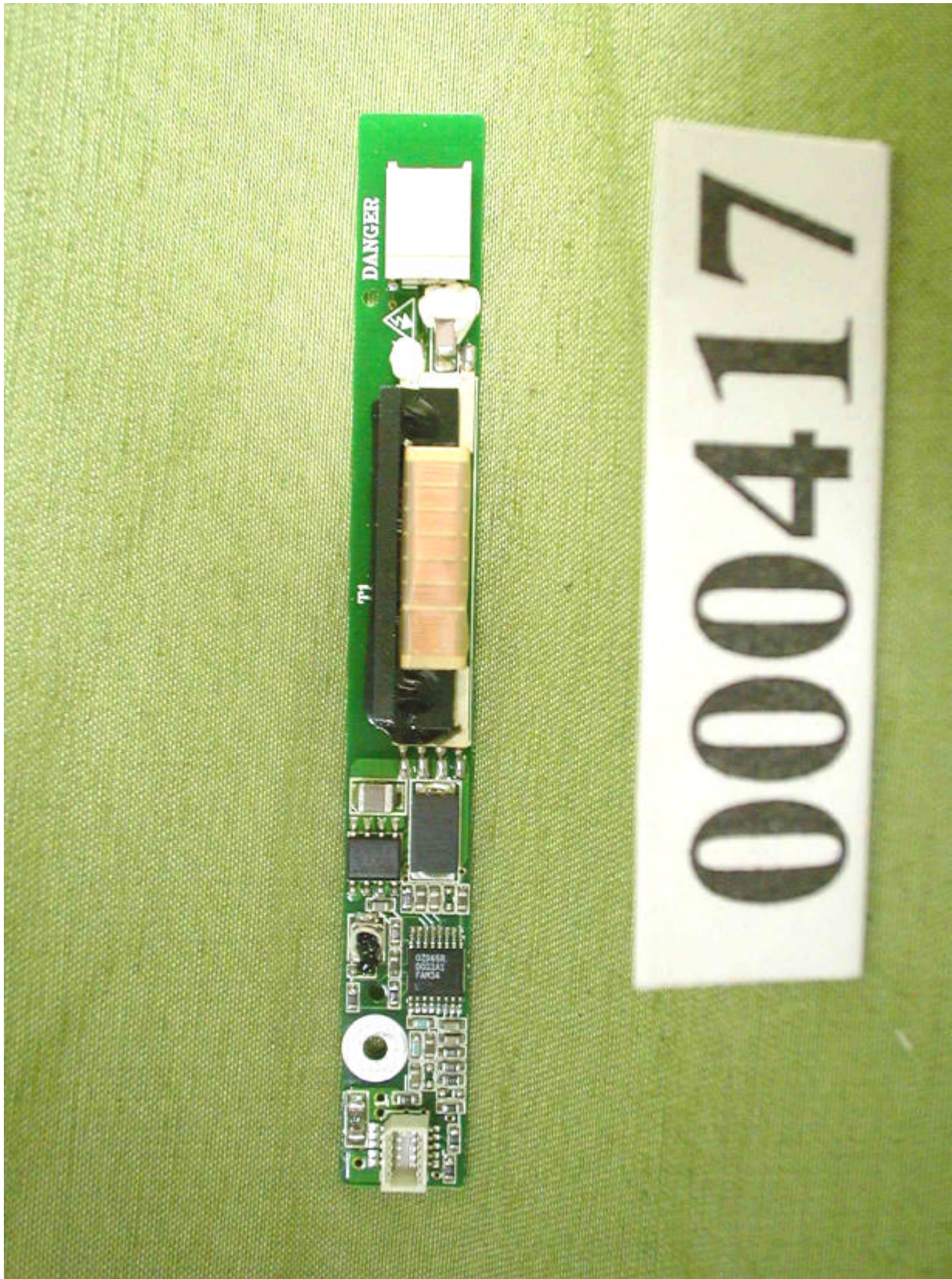


Back view of Inverter Board (12.1" LCD Panel)



Front view of Inverter Board (13.3" & 14.1" LCD Panel)



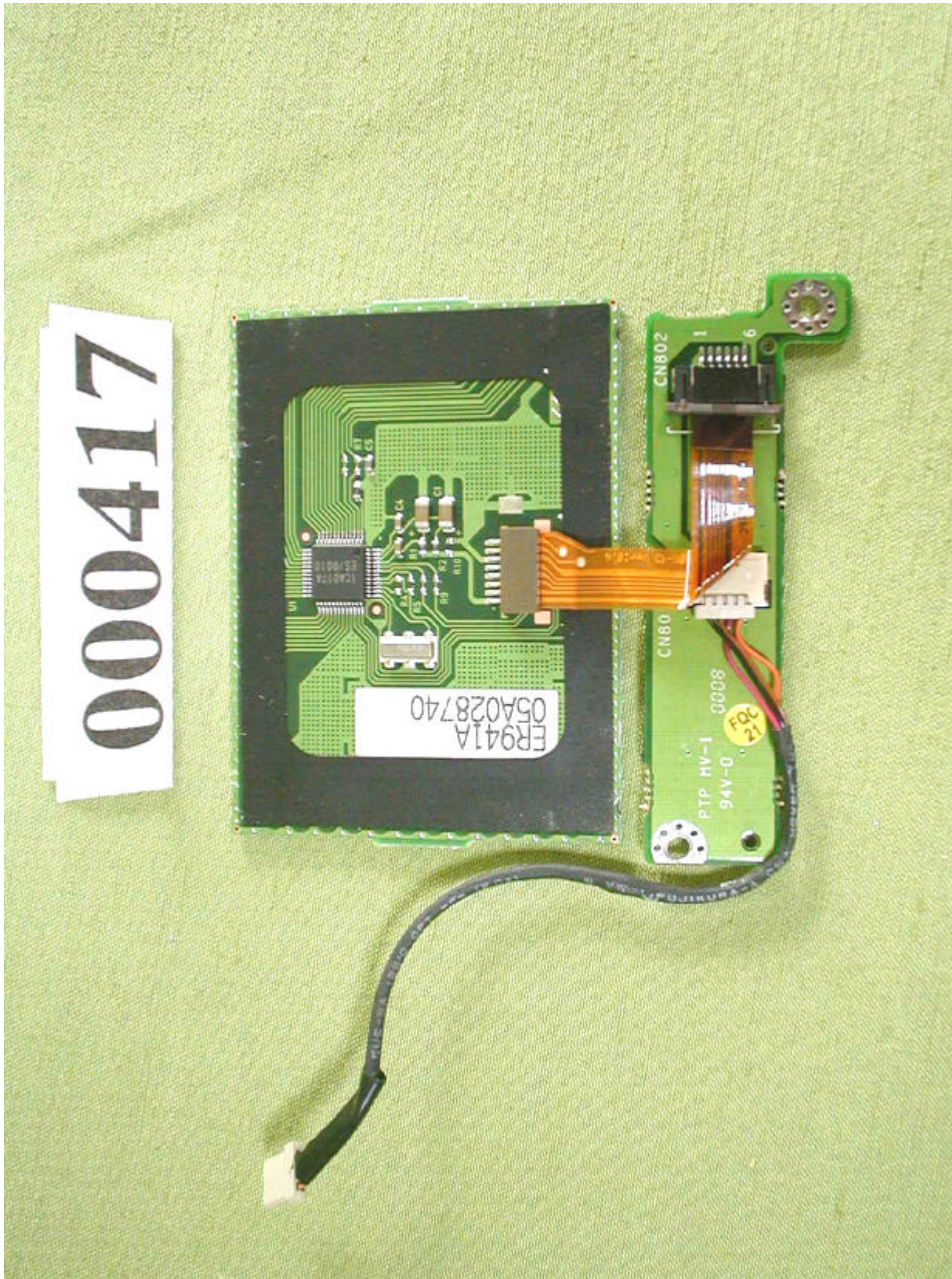
Back view of Inverter Board (13.3" & 14.1" LCD Panel)



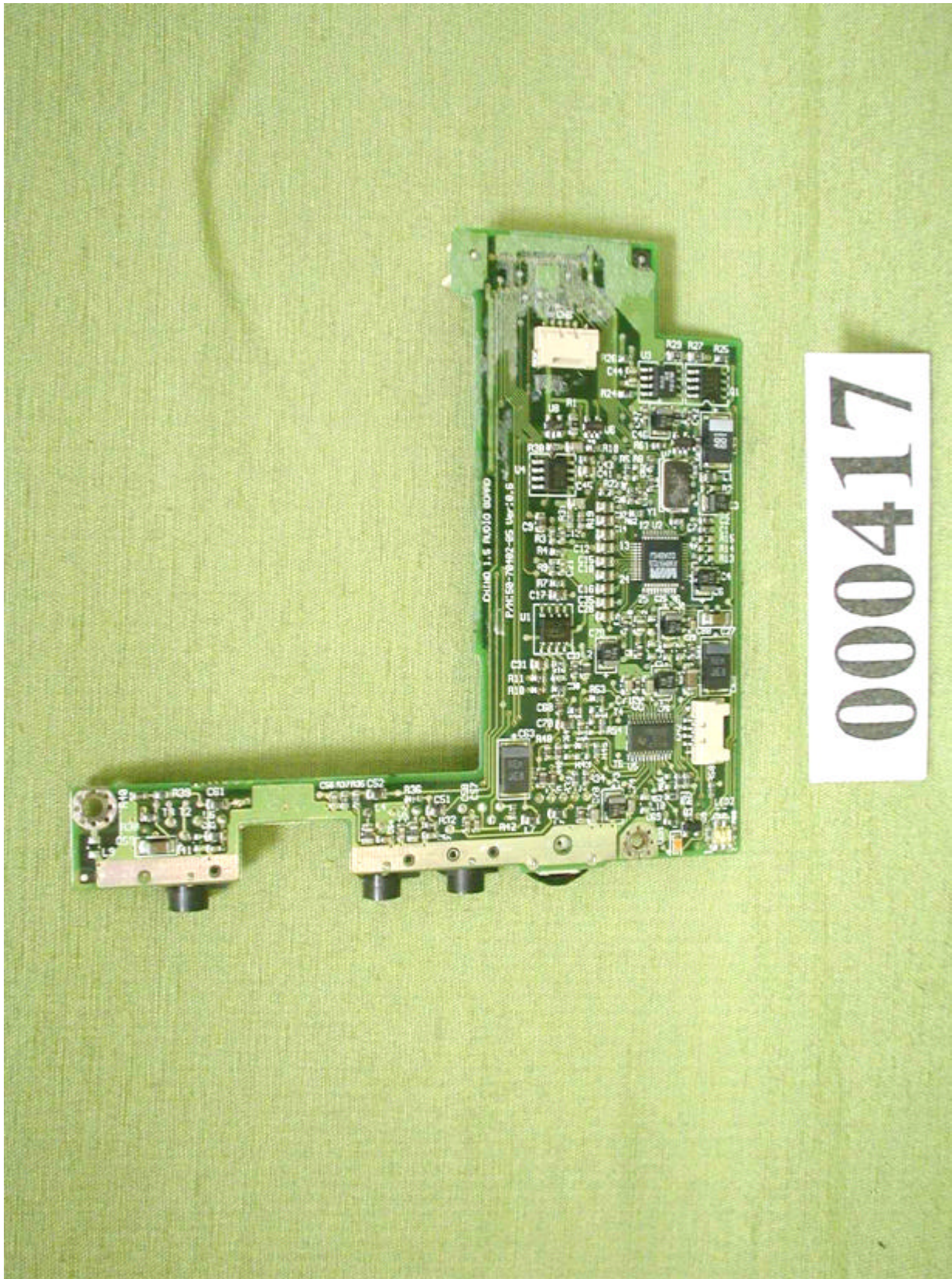
Front view of Touch Pad Board



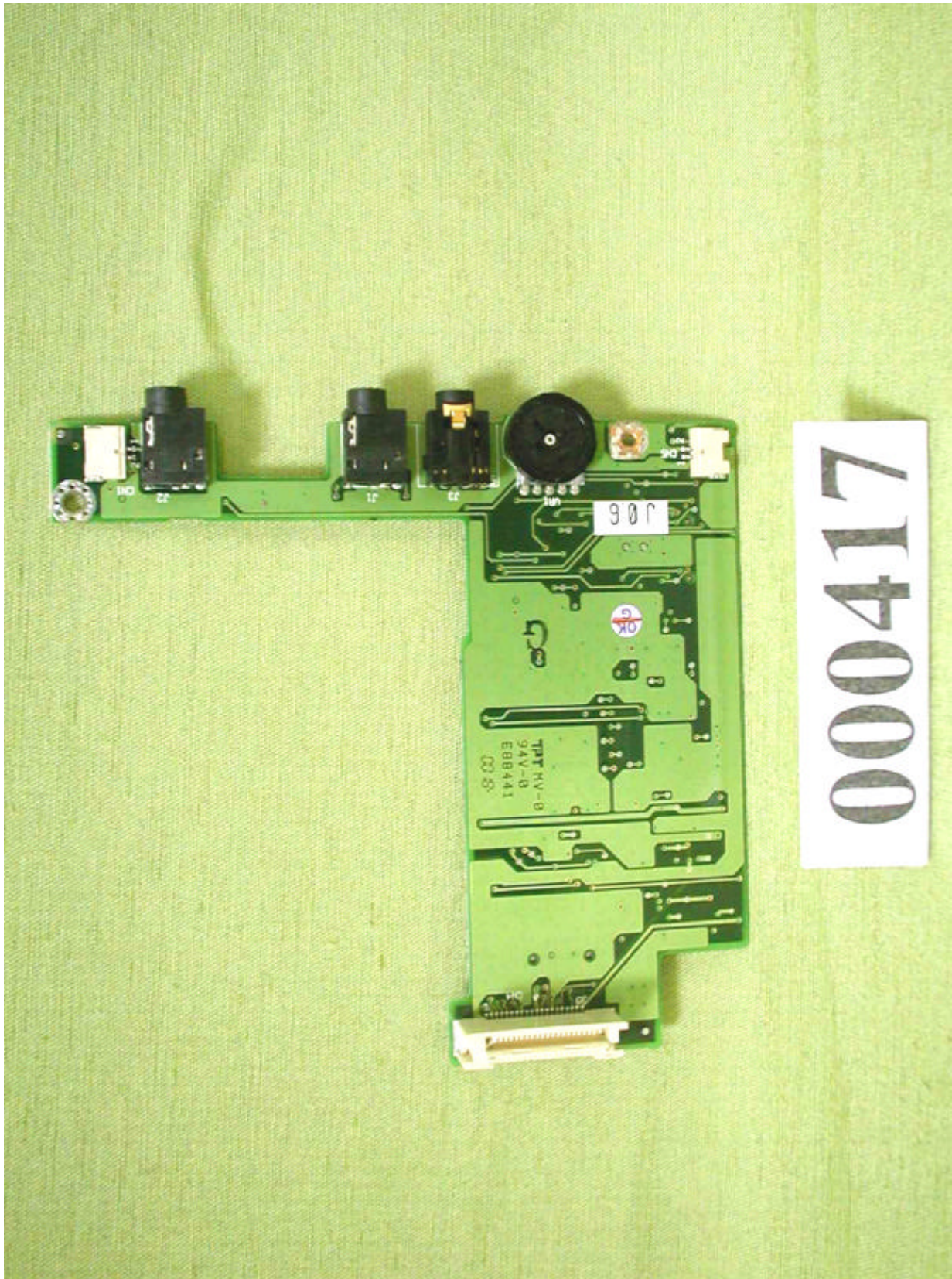
Back view of Touch Pad Board



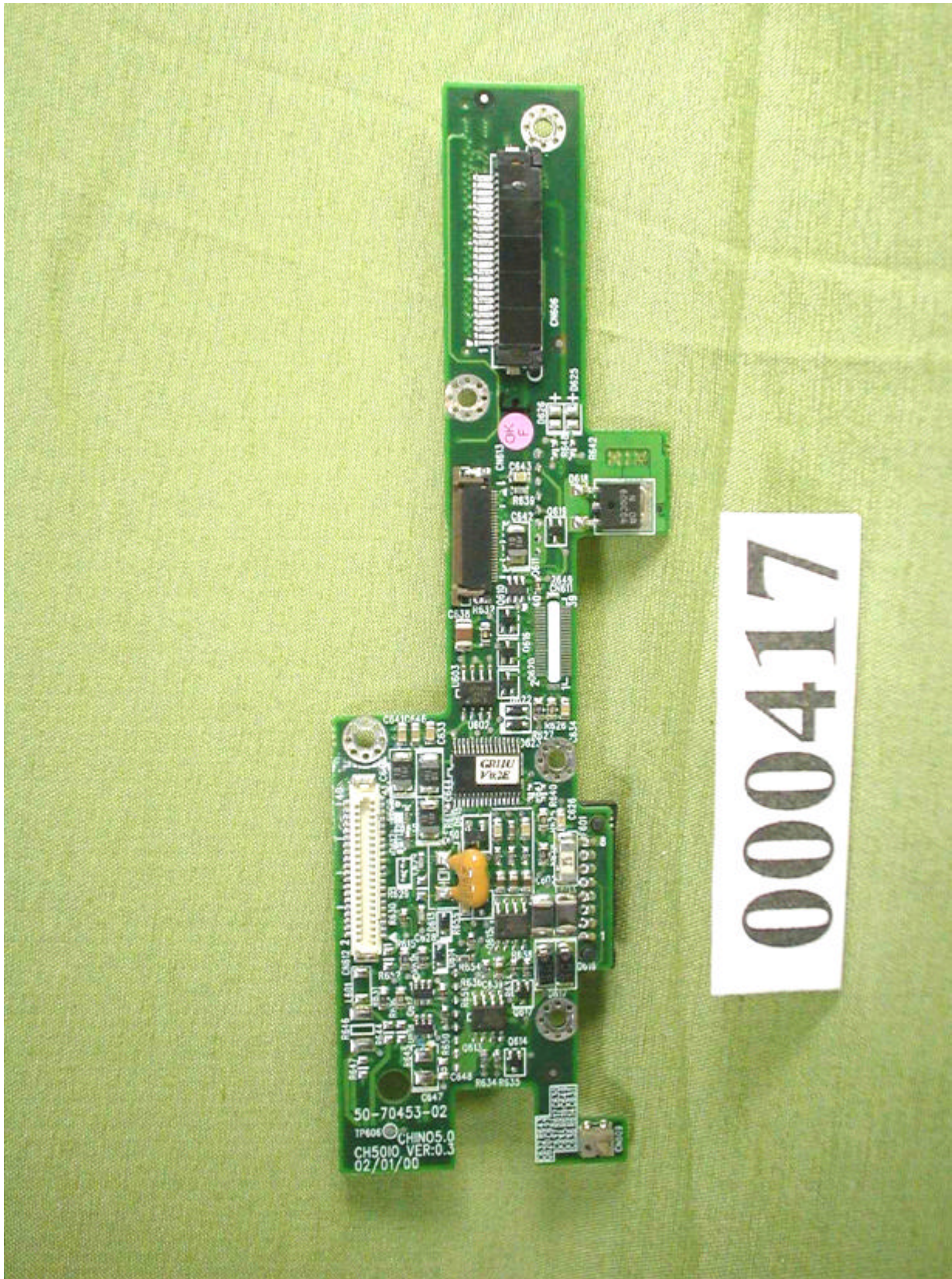
Front view of Video Board



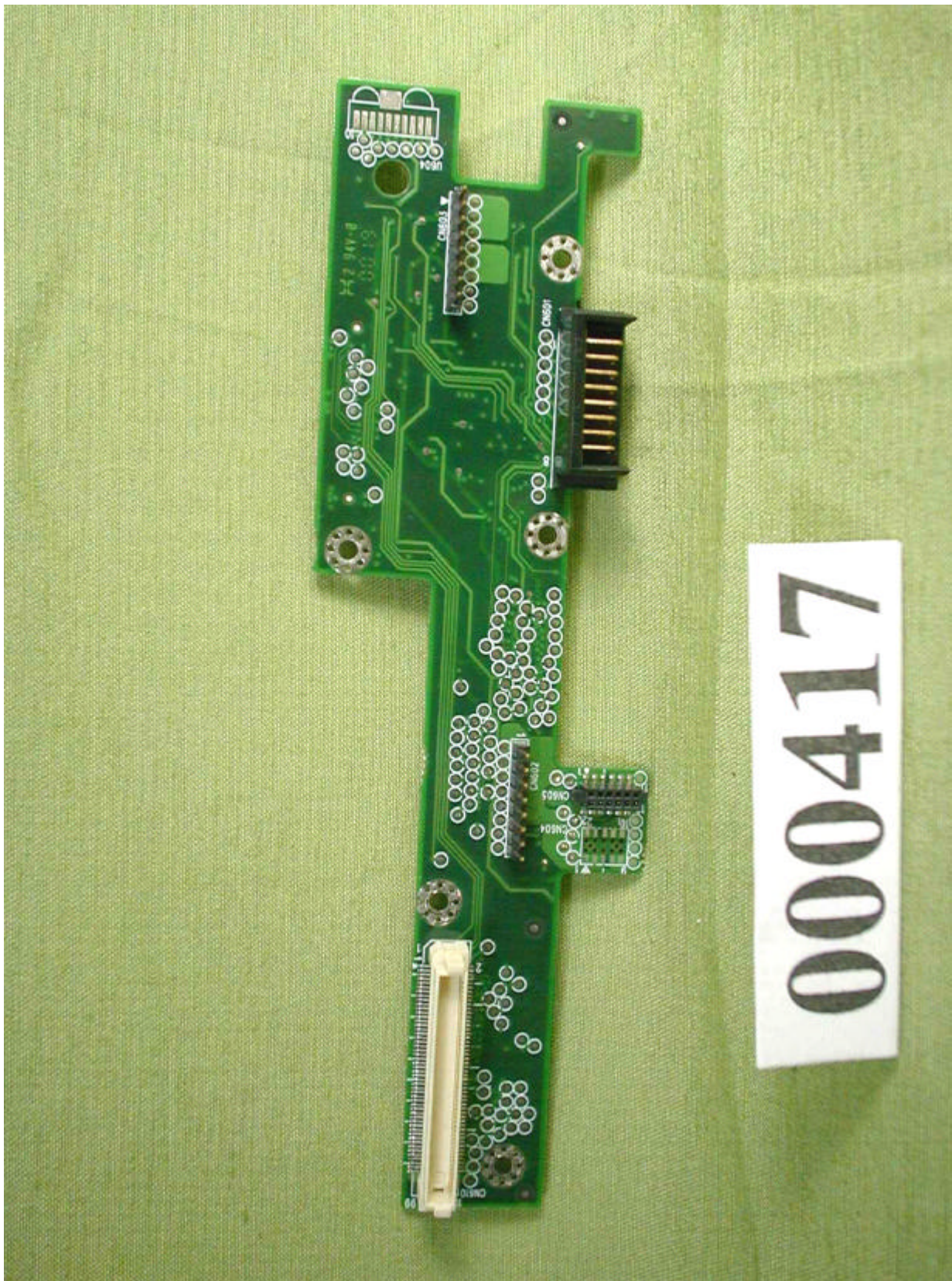
Back view of Video Board



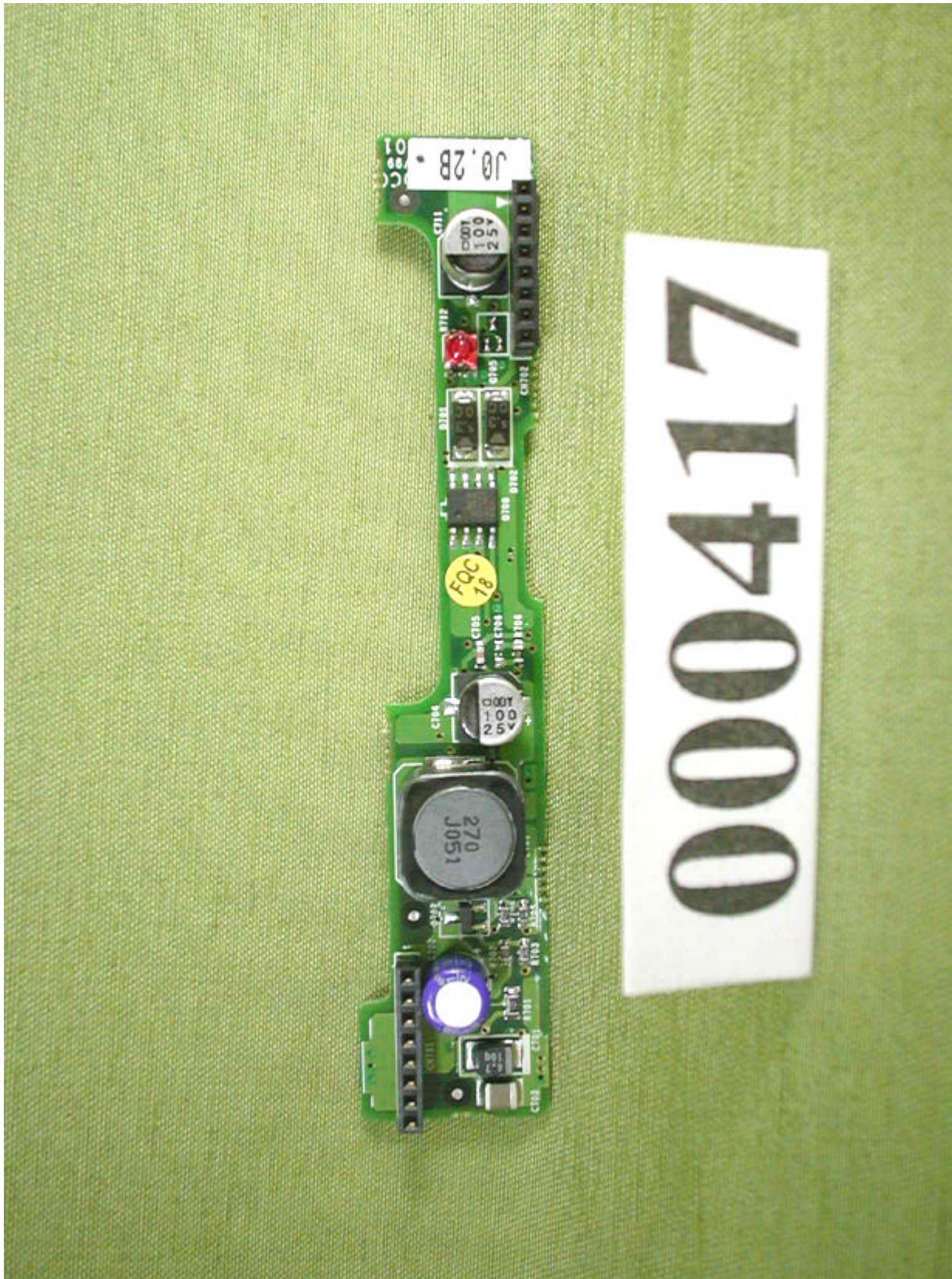
Front view of I/O Board



Back view of I/O Board



Front view of DC to DC Board



Back view of DC to DC Board



Battery

