

NU Part:  
C: 0211

Document Number: 01  
Date: May 25  
Page: 01 of 01

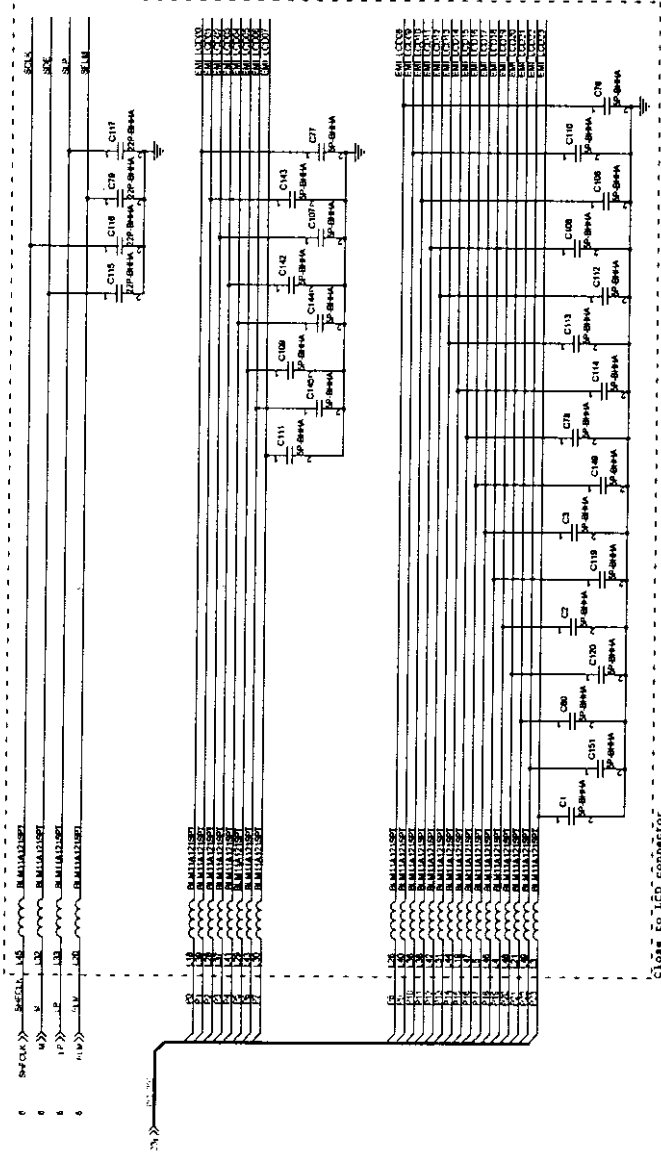
Close to MAX1617  
RE44, R300, R260, R35  
Can use .180 and .250 CPU

Thermal Diode Decoder  
Thermal power consumption:  
ICC: 100mA  
ICC-SP: 100mA  
ICC-DISP: 100mA  
ICCP: 100mA  
ICCP-DISP: 100mA

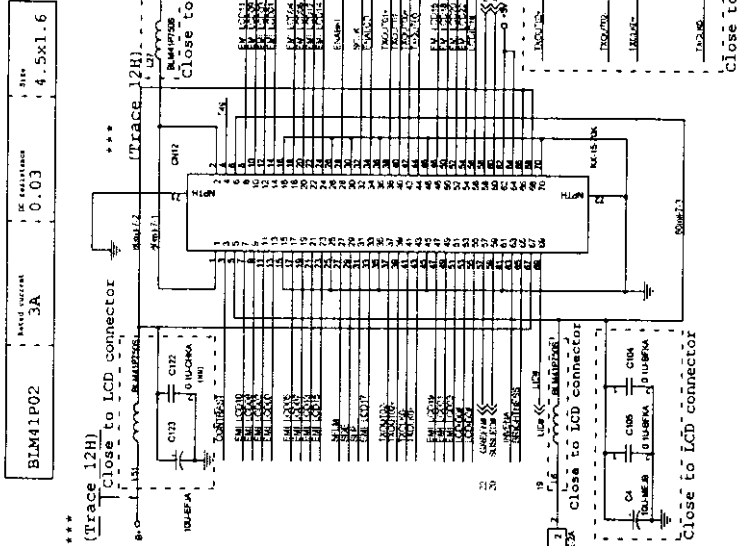
Close to MAX1617  
RE44, R300, R260, R35  
Can use .180 and .250 CPU

# DATA & CONTROL SIGNALS

FOR EN1

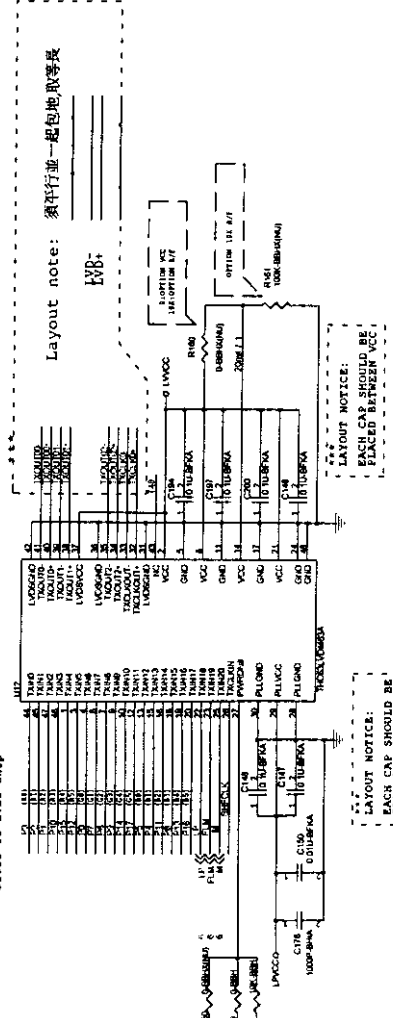
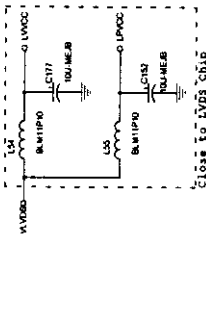


# LCD connector

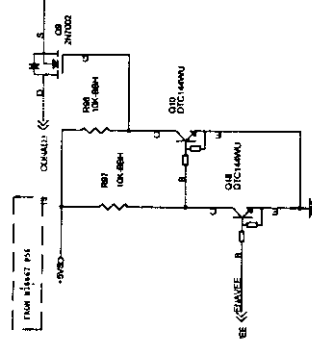


# 18bit LVDS Panel (65MHz)

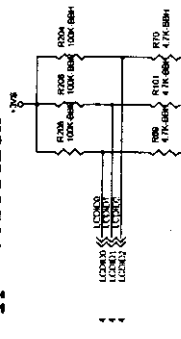
THC63LVDF63A pin14 NC



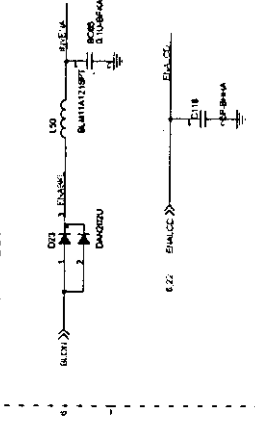
# Brightness & Contrast Control



# LCD type selection

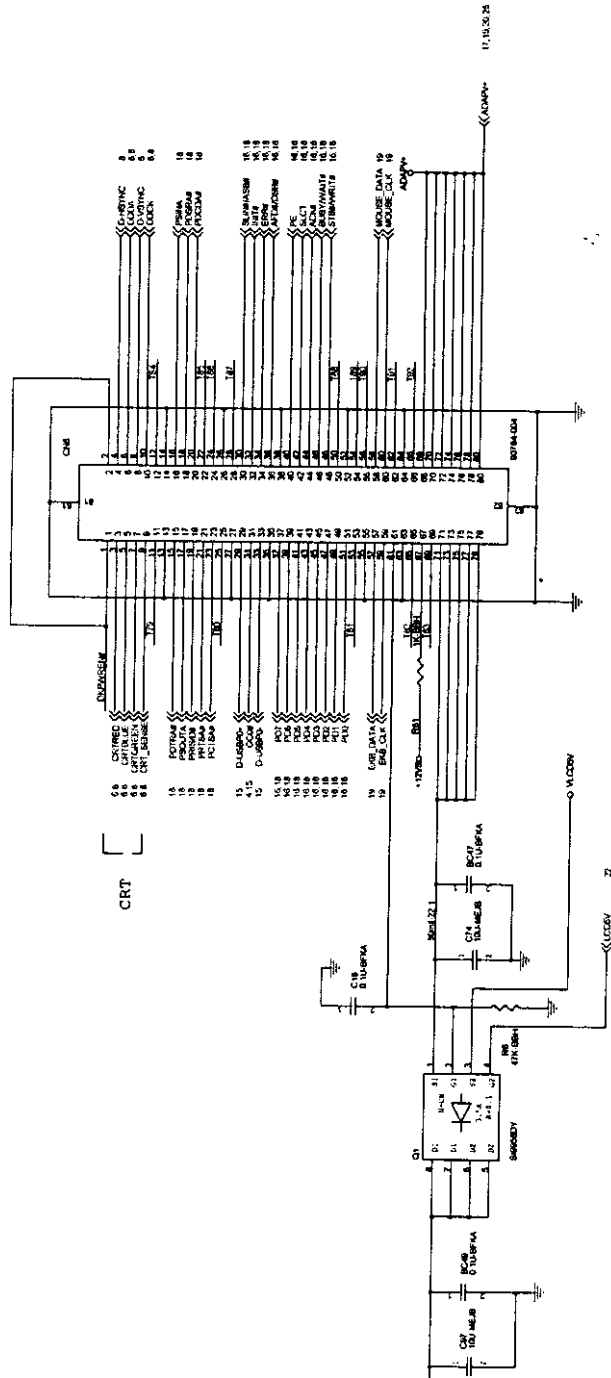


# To LCD CN



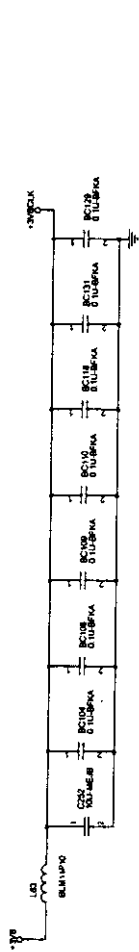
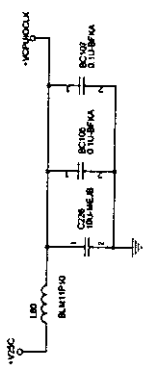
NU Part:  
R: R0P, R160, R1E1, R1P0

# DOCKING CONN

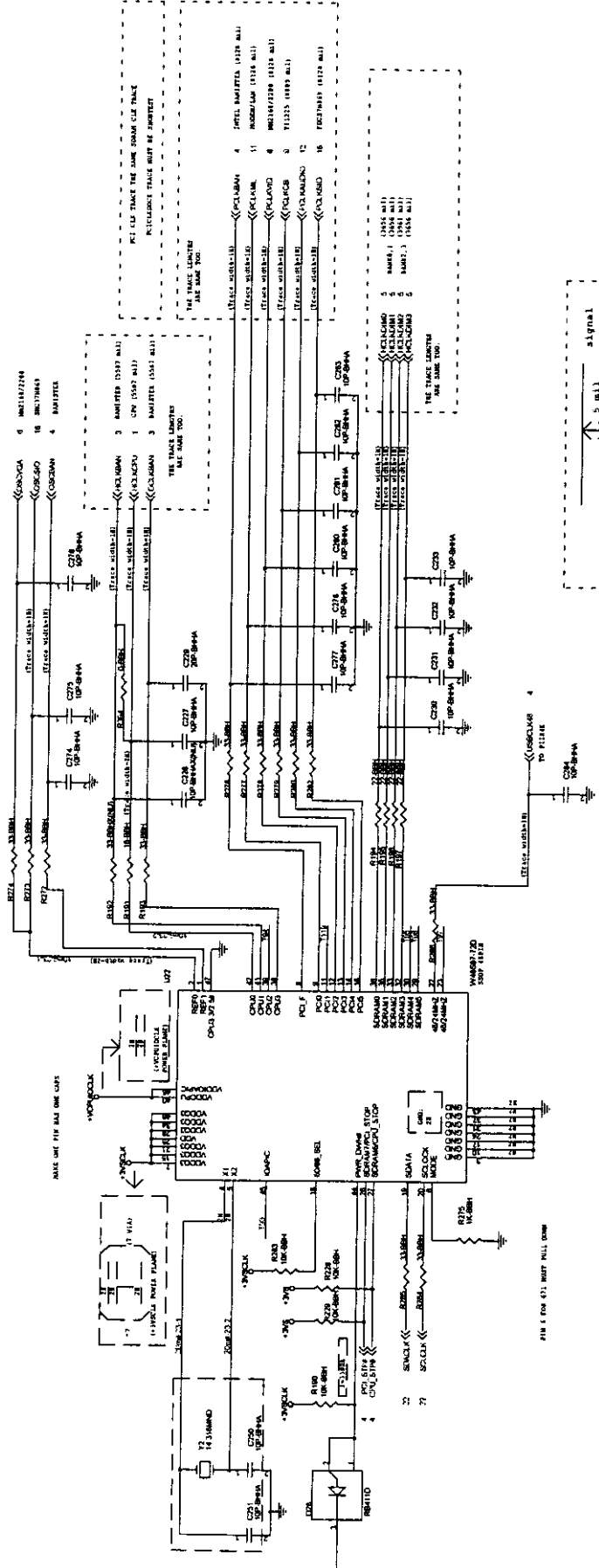


**Note:** BIOS r through SM BUS program IC WOR, pin39, pin38, pin30, pin23, pin16, pin1 output Jck

BLM11P10	0.5A	0.2	1.6x0.8
CLOCK GENERATOR			CAP



Layout note: Take Care trace width



Layout Note: Minimize the use of vias in clock signals

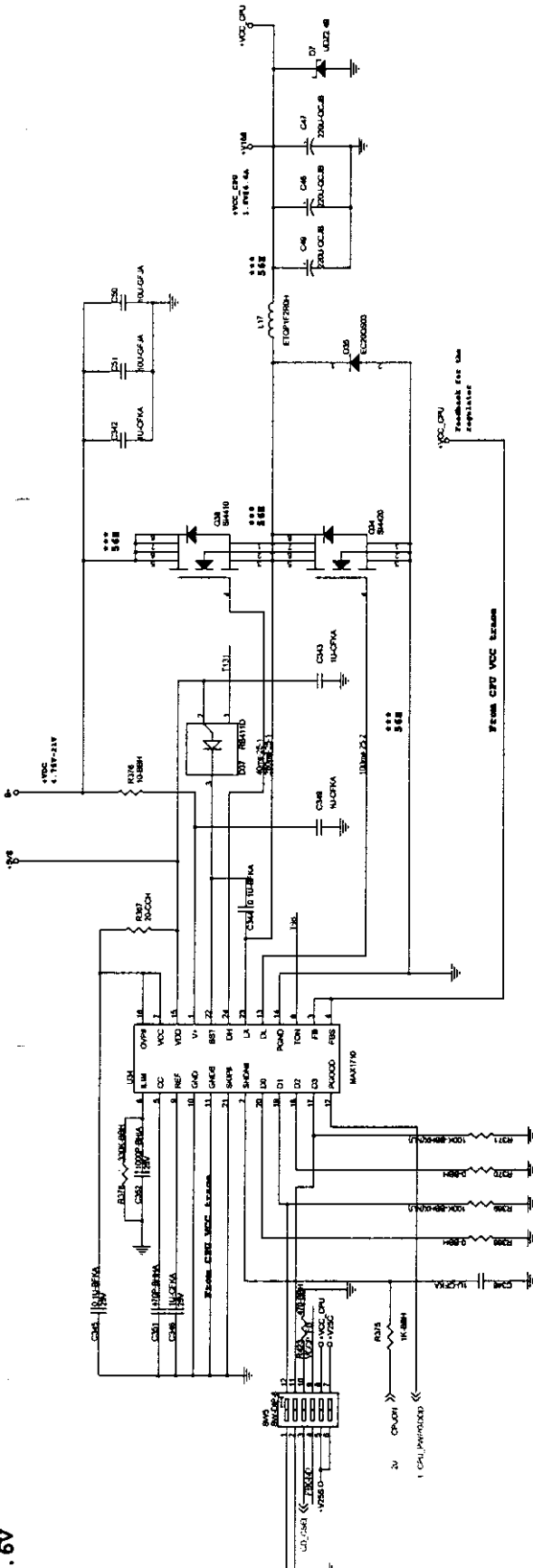
component of this page must close to CLOCK generator

NO Part:  
R: R192  
C: C228

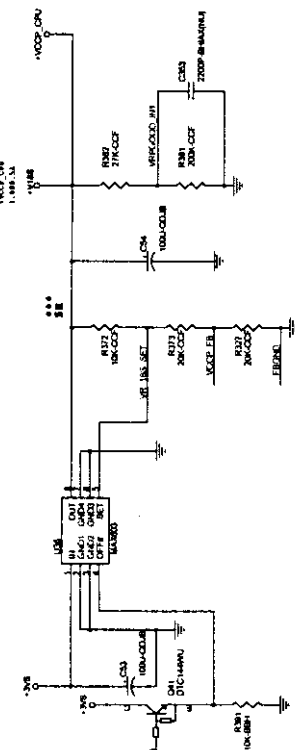
POWER ---1.6V

IO	VCC	REF	IO
F	0	3.0V	F
F	1	3.0V	F
F	1	3.5V	F
F	1	4.0V	F
F	1	4.5V	F
F	1	5.0V	F
F	1	5.5V	F
F	1	6.0V	F
F	1	6.5V	F
F	1	7.0V	F
F	1	7.5V	F
F	1	8.0V	F
F	1	8.5V	F
F	1	9.0V	F
F	1	9.5V	F
F	1	10.0V	F

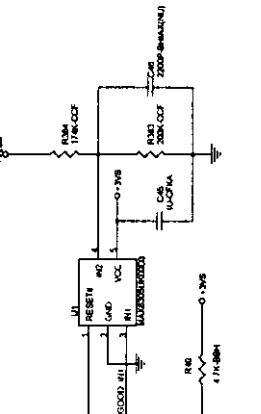
ATTENTION (with resistors) at pin 21. This is a pull-up resistor.



POWER ---1.8V



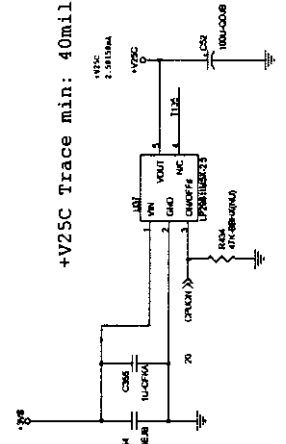
CPU POWER GOOD



Setting	CPU Voltage sel : 8MS					CPU Speed sel : 8M4				
	Vcc-core	Vccp	Vcc-lo	Volt	Pin	Vcc-core	Vccp	Vcc-lo	Volt	Pin
setting	1-12	2-11	Volt	4-9	6-7	5-8	1-8	2-7	3-6	4-5
166(.25u)	ON	OFF	1.8V	ON	ON	2.5V	OFF	OFF	OFF	OFF
400(.25u)	ON	OFF	1.8V	ON	ON	2.5V	OFF	ON	ON	ON
333(.25u)	ON	OFF	1.8V	ON	ON	2.5V	OFF	OFF	ON	ON
166(.25u)	ON	OFF	1.8V	ON	ON	2.5V	OFF	ON	ON	ON
100(.18u)	OFF	OFF	1.5V	ON	ON	2.5V	OFF	OFF	ON	ON
133(.18u)	OFF	OFF	1.5V	ON	ON	2.5V	OFF	OFF	ON	ON
266(.25u)	ON	OFF	1.8V	ON	ON	2.5V	OFF	OFF	ON	ON
300(.25u)	ON	OFF	1.8V	ON	ON	2.5V	OFF	OFF	ON	ON
333(.25u)	ON	OFF	1.8V	ON	ON	2.5V	OFF	OFF	ON	ON
366(.25u)	ON	OFF	1.8V	ON	ON	2.5V	OFF	OFF	ON	ON
400(.25u)	ON	OFF	1.8V	ON	ON	2.5V	OFF	OFF	ON	ON
433(.25u)	OFF	ON	1.8V	ON	ON	2.5V	OFF	OFF	ON	OFF

LAST USED REFERENCES  
C408  
R451  
L68  
D32  
Q46  
S45  
S45  
C425  
F6  
BC164  
Y6  
RP54  
MR4  
H2  
ORC2  
RFAD5  
QFAD3  
SOPF0  
F66  
VRL  
QRC2  
R4M6

CPU POWER ---2.5V



+V25C Trace min: 40mil

NO Part:  
R: R369,R371,R416  
C: C46,C55