

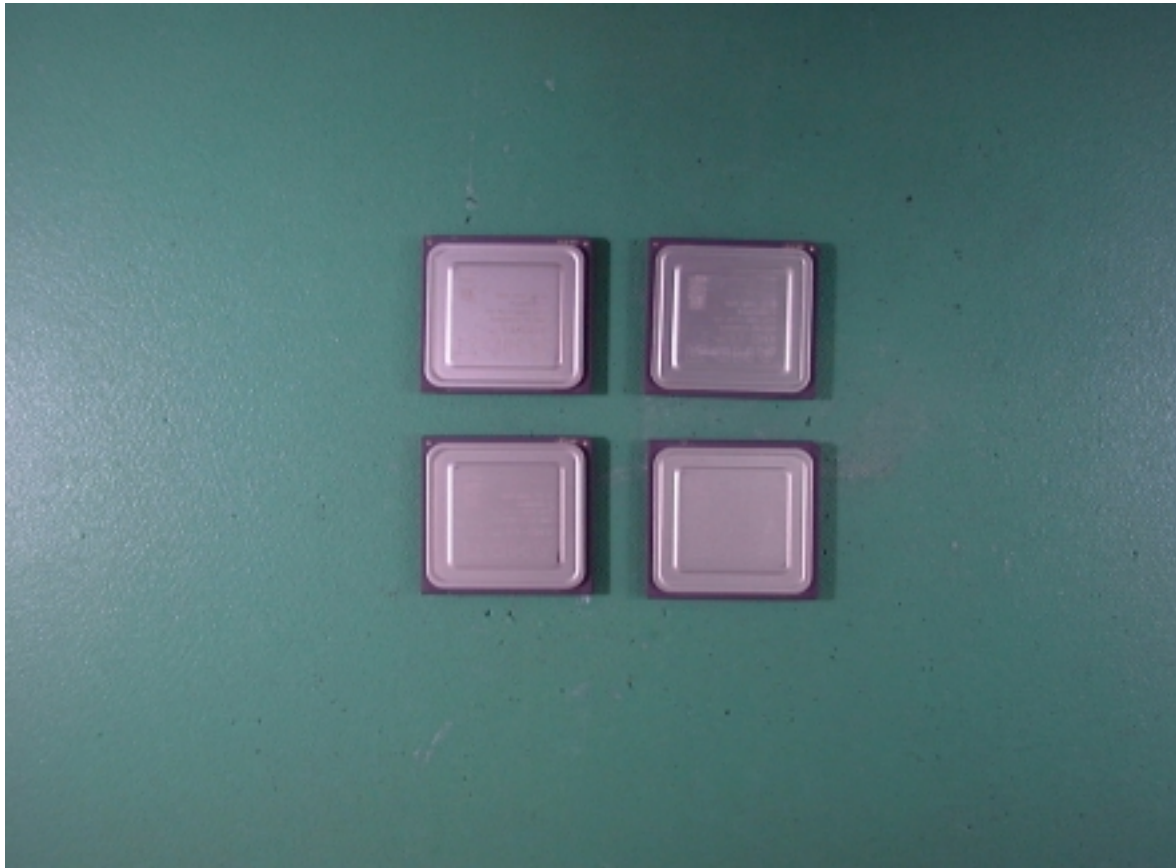
29. FRONT VIEW OF BATTERY



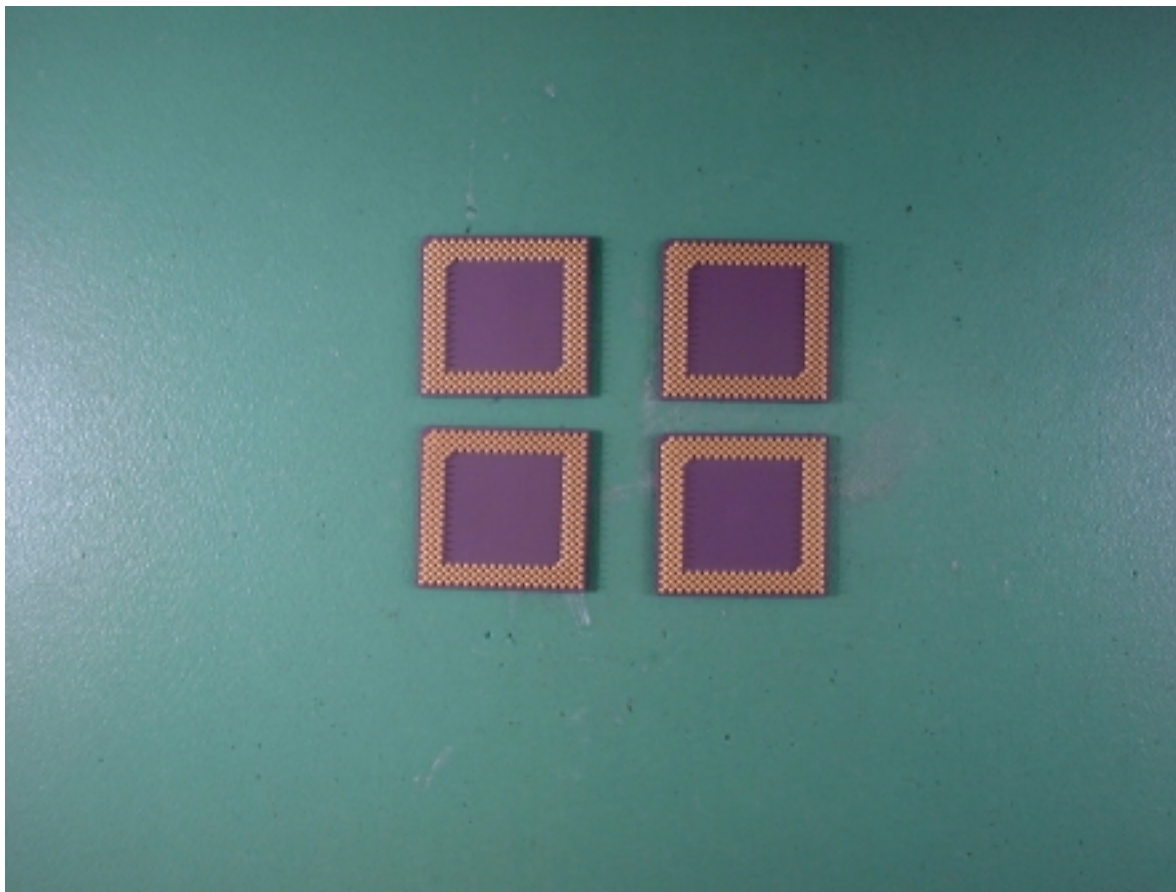
30. BACK VIEW OF BATTERY



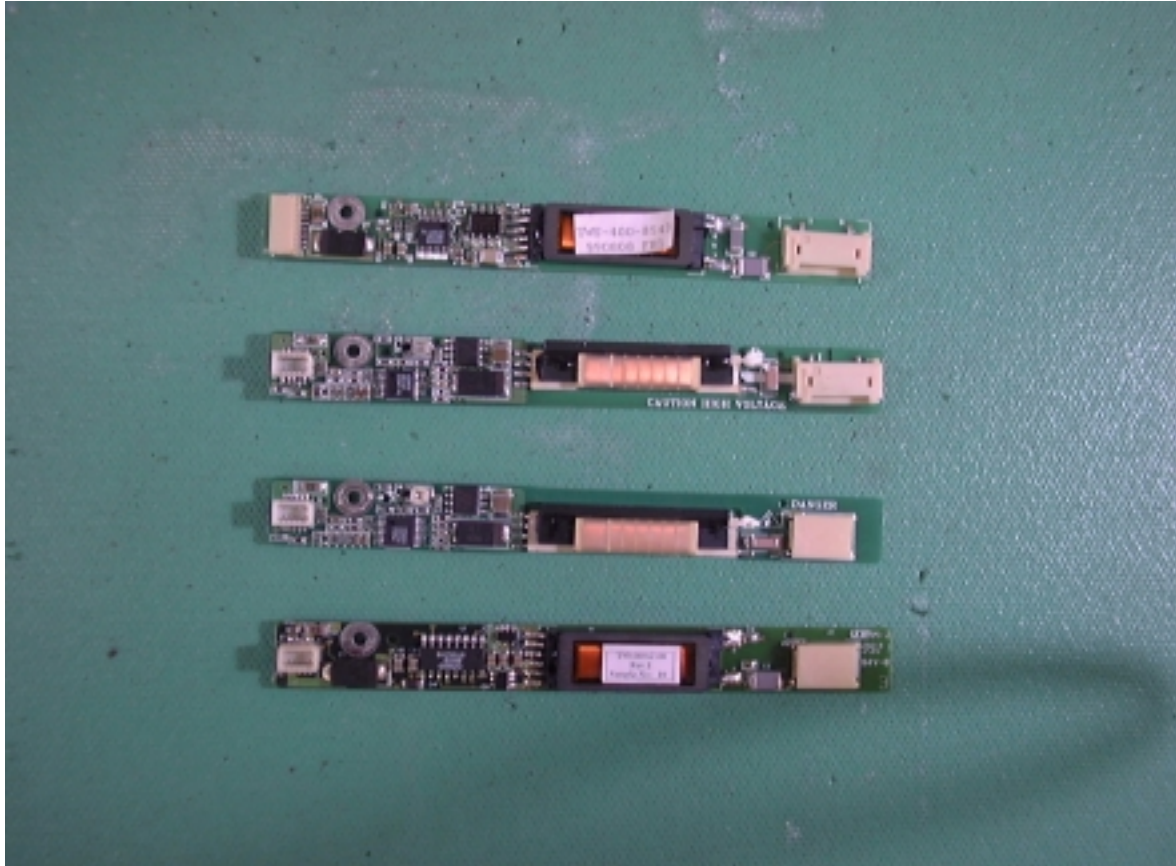
31. FRONT VIEW OF CPU



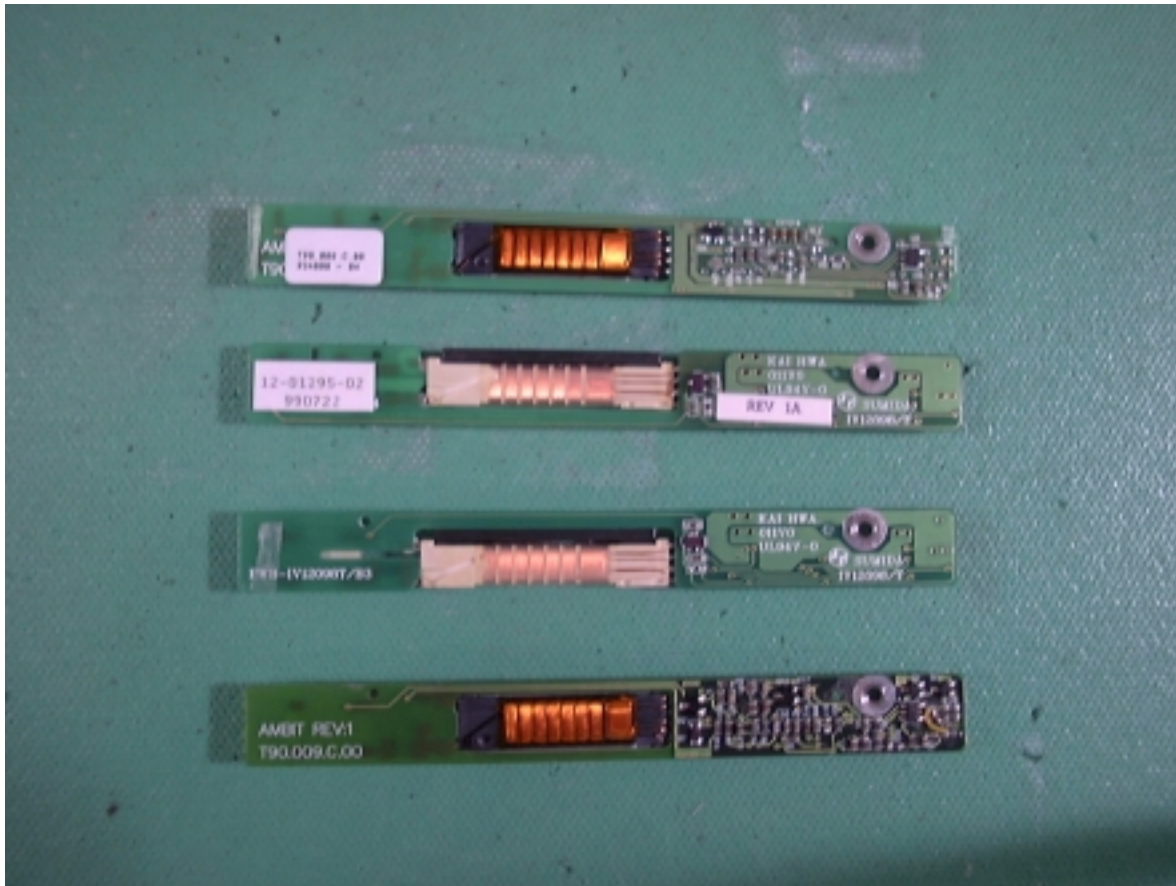
32. BACK VIEW OF CPU



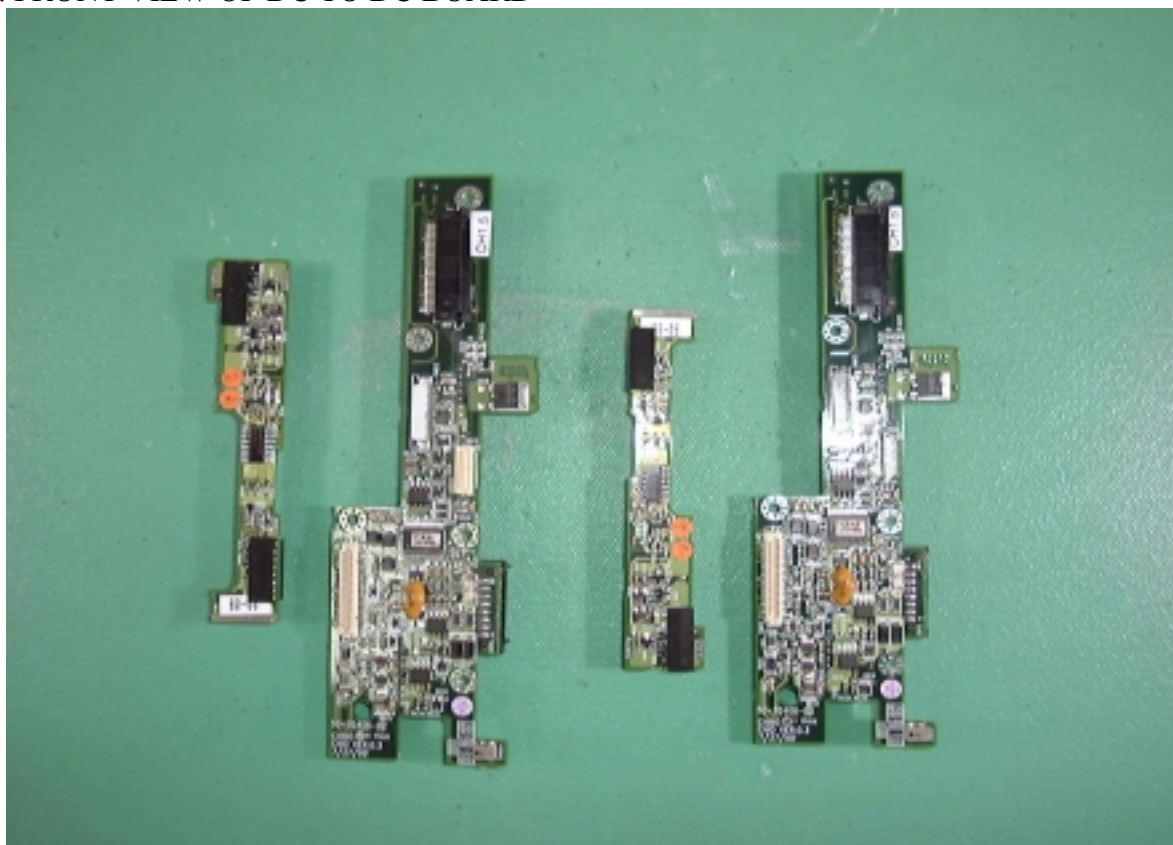
33. FRONT VIEW OF INVERTER



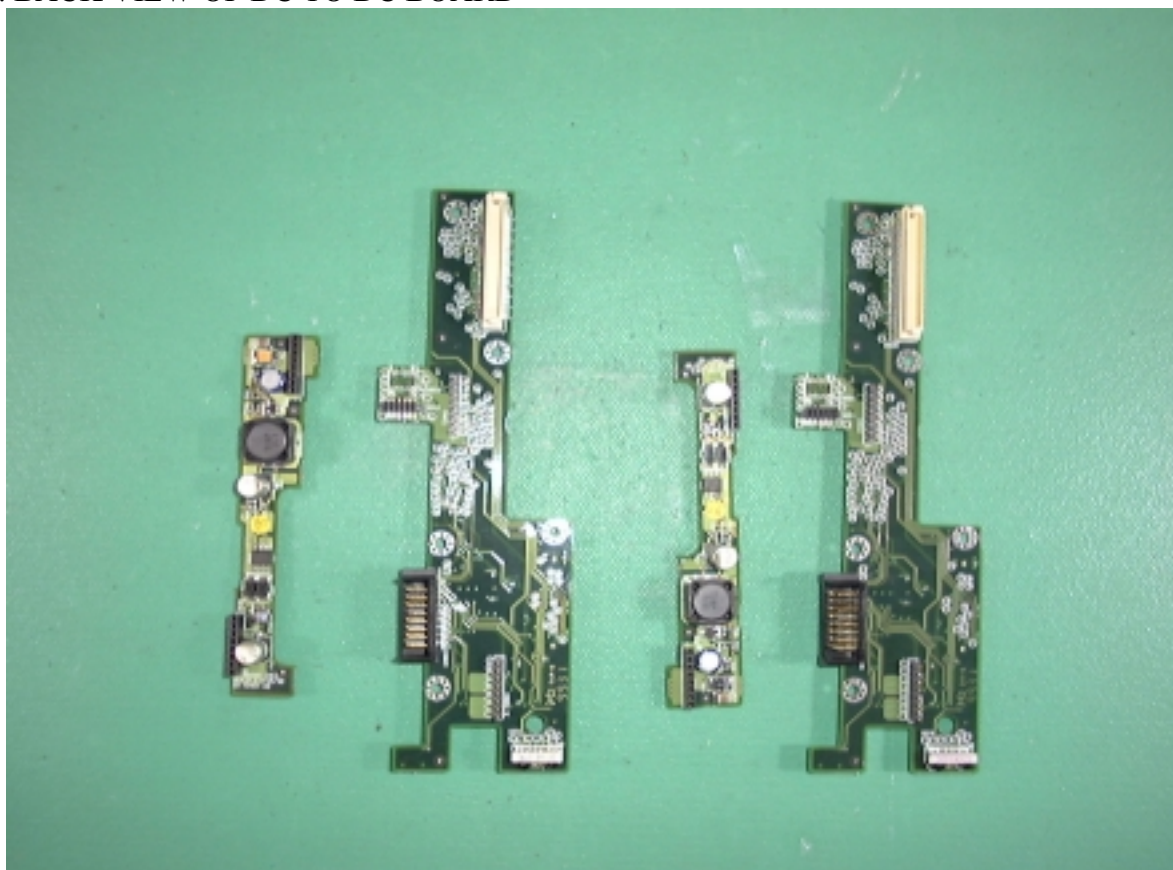
34. BACK VIEW OF INVERTER



35. FRONT VIEW OF DC TO DC BOARD



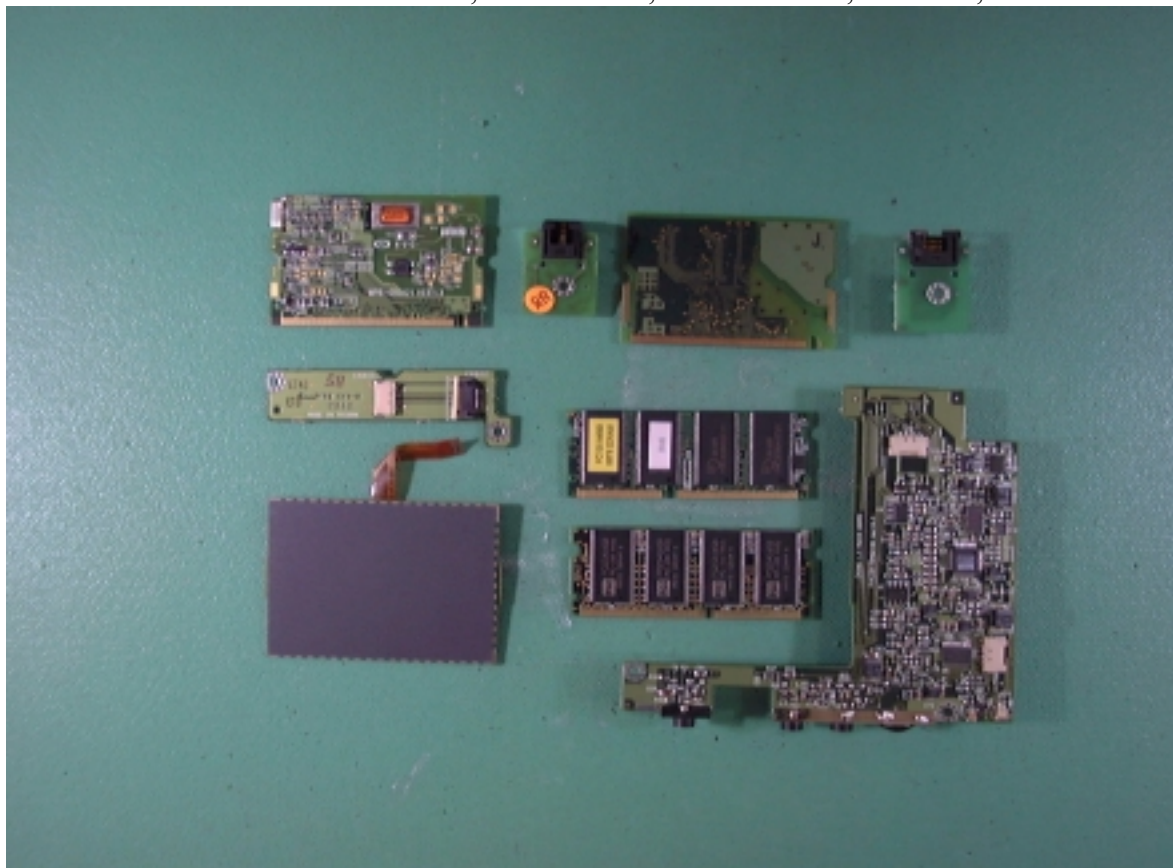
36. BACK VIEW OF DC TO DC BOARD



37. FRONT VIEW OF MODEM CARD, LAN CARD, TOUCH PAD, SDRAM, I/O BOARD



38. BACK VIEW OF MODEM CARD, LAN CARD, TOUCH PAD, SDRAM, I/O BOARD



39. FRONT VIEW OF ADAPTOR



40. BACK VIEW OF ADAPTOR



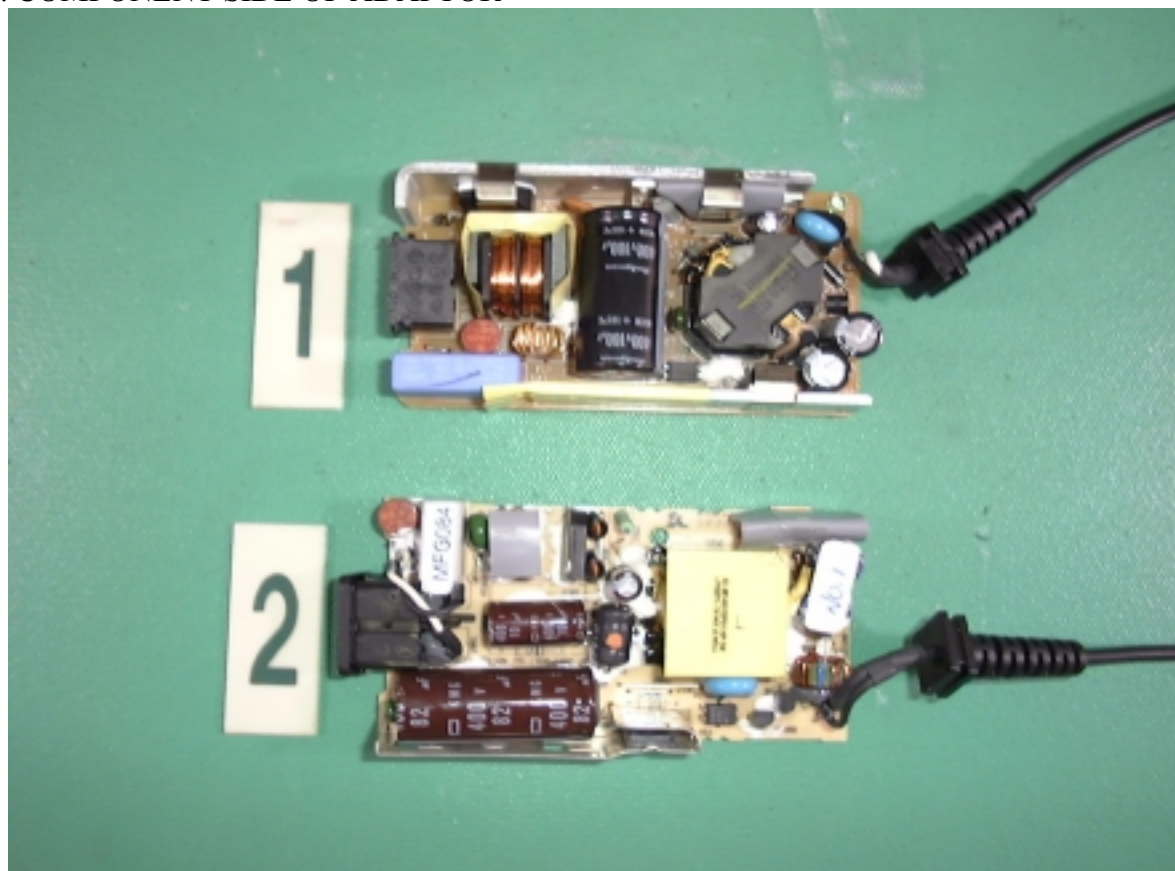
41. INNER VIEW OF ADAPTOR



42. INNER VIEW OF ADAPTOR



43. COMPONENT SIDE OF ADAPTOR



44. SOLDER SIDE OF ADAPTOR

