

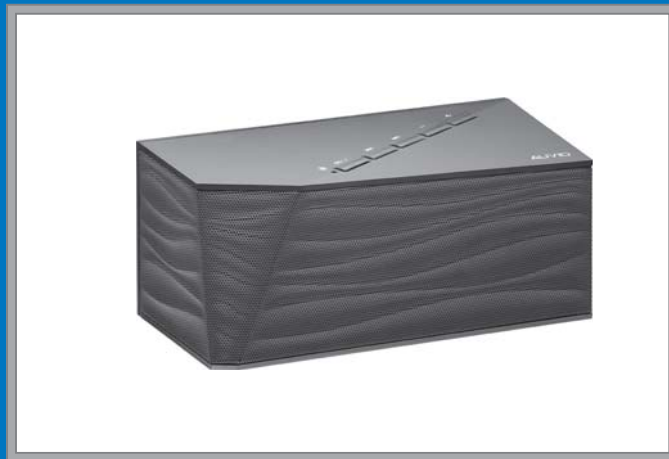
**AUVIO**<sup>®</sup>  
THE PERFORMANCE YOU NEED<sup>®</sup>

## Bluetooth<sup>®</sup> Portable Speaker

*Please read this user's guide before using your new speaker.*

User's Guide

4000451, 4000474




## Package Contents

- Bluetooth® Portable Speaker
- USB Charging Cable
- User's Guide

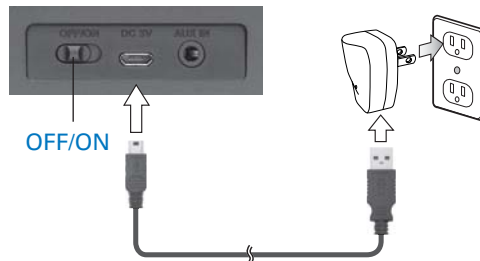
## Features

- No cord to tie you down
- Rich, full, and dynamic stereo sound
- Built-in speakerphone for answering calls when connected to your mobile phone through Bluetooth wireless technology
- Rechargeable Li-poly battery for extended play time, up to 8 hours
- Compatible with most Bluetooth wireless technology-enabled tablets, laptops, MP3 players, and smartphones with iOS or Android™ platforms

 **Note:** You can download Auvio EQ App free from the App Store<sup>SM</sup> and Google Play<sup>TM</sup> to customize your calls and music. Not all Android phones can use this app.

## Charge Your Speaker

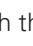




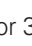
Using the USB charging cable, connect your speaker's **DC 5V** jack to your PC or a USB charger (not included) to charge the speaker.

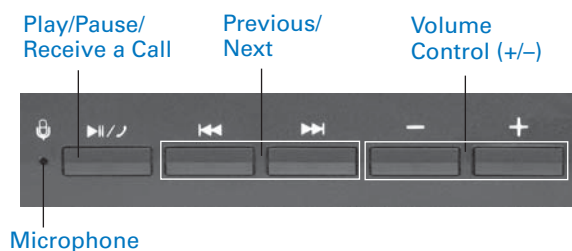


- The charging indicator lights red during charging and turns off when charging is complete.
- A full charge takes about 3.5 hours. When fully charged, the speaker is capable of operating for up to 8 hours at medium volume levels.  
Using a charger with output less than 5 V 500 mA can prolong the charging time.
- You can charge the speaker in both the **ON** and **OFF** modes.
- If the battery power is very low, the speaker will sound "low battery" to alert you and turn off.



## Use Your Speaker

1. Switch on your speaker; a voice sounds "power on" and the Bluetooth indicator flashes.
2. Activate your device's Bluetooth function (refer to your device's user's guide) and search for device. When **AUVIO PBT500** appears in the Bluetooth devices list, select it to pair your device with the speaker. A voice sounds "paired, enjoy" when Bluetooth activates and "disconnected" when Bluetooth deactivates.
3. You can control your speaker through your device or with the speaker's , , and  buttons.
  - If a smartphone is connected and you receive a call, you can answer the call by pressing  and speak into the microphone .
  - Press and hold  for 3 seconds to disconnect Bluetooth. The speaker starts searching for another Bluetooth device.
  - If you press the **+** button and hear a beep, the speaker is at its maximum volume.



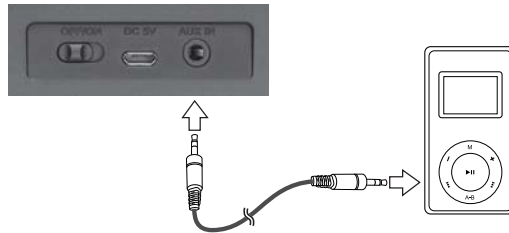


**Note:**

- If your device uses Bluetooth 2.1 and below, enter the password 0000 for Bluetooth connection.
- If the speaker is too far from the device, it disconnects from the device and starts searching for another Bluetooth device.
- If the speaker malfunctions, reset it by pressing ►|| twice when the Bluetooth function is disconnected.

## Use AUX IN

For an audio devices without Bluetooth technology, use an audio cable (not included) to connect it to the speaker's **AUX IN** jack.



**Note:**

- Bluetooth is automatically deactivated when **AUX IN** is connected, even when you leave the audio cable plugged to **AUX IN** only.
- Bluetooth is deactivated if your device has an audio cable or earphones plugged in.
- The controls on the speaker are disabled for **AUX IN** connections. Use the controls on your audio device to control music playback.

## Care and Caution

- *Do not operate the speaker if it has been damaged in any way.*
- *Do not place heavy objects on top of the speaker.*
- *To avoid electromagnetic interference, do not place the speaker on top of a TV or other electrical appliance.*

## Lithium Battery Notes:

- *Recycle lithium batteries. Do not dispose in the trash.*
- *Do not burn or bury batteries. Do not puncture or crush. Do not disassemble.*
- *Charge batteries on a fireproof surface away from flammable items or liquids.*
- *Do not charge inside an automobile, especially while driving.*
- *If the electrolyte in the cells should get on your skin, thoroughly wash with soap and water. If in the eyes, rinse thoroughly with cool water. Immediately seek medical attention.*
- *Follow the instructions for charging the speaker and do not charge longer than recommended. Unplug the USB cable when the battery is charged.*

## Specifications

Power Input .....	DC 5 V, 500 mA
Output .....	2 W × 2 (Max.)
Impedance .....	4Ω
Frequency Response .....	100 Hz – 15 kHz
Bluetooth Connection Range .....	30 ft. (9.1m)
Bluetooth Protocol .....	V4.0 +EDR
S/N Ratio .....	65dB (A weighted)
Dimensions (HWD) .....	2.8 × 6.5 × 2.8 in (72 × 165 × 70mm)
Weight .....	12 oz (340g)

*Specifications are subject to change and improvement without notice.  
Actual product may vary from the images found in this document.*

## FCC Information

This equipment has been tested and found to comply with the limits for a Class B digital device, pursuant to Part 15 of the FCC Rules. These limits are designed to provide reasonable protection against harmful interference in a residential installation. This equipment generates, uses and can radiate radio frequency energy and, if not installed and used in accordance with the instructions, may cause harmful interference to radio communications. However, there is no guarantee that interference will not occur in a particular installation. If this equipment does cause harmful interference to radio or television reception, which can be determined by turning the equipment off and on, the user is encouraged to try to correct the interference by one or more of the following measures:

- Reorient or relocate the receiving antenna.
- Increase the separation between the equipment and receiver.
- Connect the equipment into an outlet on a circuit different from that to which the receiver is connected.

- Consult the dealer or an experienced radio/TV technician for help.

If you cannot eliminate the interference, the FCC requires that you stop using your product. Changes or modifications not expressly by the party responsible for compliance could void the user's authority to operate the equipment.

**Warning: Changes or modifications to this unit not expressly approved by the party responsible for compliance could void the user's authority to operate the equipment.**

### **Limited Warranty**

Ignition L.P. warrants this product against defects in materials and workmanship under normal use by the original purchaser for **ninety (90) days** after the date of purchase. IGNITION L.P. MAKES NO OTHER EXPRESS WARRANTIES.

This warranty does not cover: (a) damage or failure caused by or attributable to abuse, misuse, failure to follow instructions, improper installation or maintenance, alteration, accident, Acts of God (such as floods or lightning), or excess voltage or current; (b) improper or incorrectly performed repairs by persons who are not a Ignition L.P. Authorized Service Facility; (c) consumables such as fuses or batteries; (d) ordinary wear and tear or cosmetic damage; (e) transportation, shipping or insurance costs; (f) costs of product removal, installation, set-up service, adjustment or reinstallation; and (g) claims by persons other than the original purchaser.

Should a problem occur that is covered by this warranty, take the product and the sales receipt as proof of purchase date to the place of purchase. Ignition L.P. will, at its option, unless otherwise provided by law: (a) repair the product without charge for parts and labor; (b) replace the product with the same or a comparable product; or (c) refund the purchase price. All replaced parts and products, and products on which a refund is made, become the property of Ignition L.P. New or reconditioned parts and products may be used in the performance of warranty service. Repaired or replaced parts and products are warranted for the remainder of the original warranty period. You will be charged for repair



or replacement of the product made after the expiration of the warranty period.

IGNITION L.P. EXPRESSLY DISCLAIMS ALL WARRANTIES AND CONDITIONS NOT STATED IN THIS LIMITED WARRANTY. ANY IMPLIED WARRANTIES THAT MAY BE IMPOSED BY LAW, INCLUDING THE IMPLIED WARRANTY OF MERCHANTABILITY AND, IF APPLICABLE, THE IMPLIED WARRANTY OF FITNESS FOR A PARTICULAR PURPOSE, SHALL EXPIRE ON THE EXPIRATION OF THE STATED WARRANTY PERIOD.

EXCEPT AS DESCRIBED ABOVE, IGNITION L.P. SHALL HAVE NO LIABILITY OR RESPONSIBILITY TO THE PURCHASER OF THE PRODUCT OR ANY OTHER PERSON OR ENTITY WITH RESPECT TO ANY LIABILITY, LOSS OR DAMAGE CAUSED DIRECTLY OR INDIRECTLY BY USE OR PERFORMANCE OF THE PRODUCT OR ARISING OUT OF ANY BREACH OF THIS WARRANTY, INCLUDING, BUT NOT LIMITED TO, ANY DAMAGES RESULTING FROM INCONVENIENCE AND ANY LOSS OF TIME, DATA, PROPERTY, REVENUE, OR PROFIT AND ANY INDIRECT, SPECIAL, INCIDENTAL, OR CONSEQUENTIAL DAMAGES, EVEN IF IGNITION L.P. HAS BEEN ADVISED OF THE POSSIBILITY OF SUCH DAMAGES.

Some states do not allow limitations on how long an implied warranty lasts or the exclusion or limitation of incidental or consequential damages, so the above limitations or exclusions may not apply to you. This warranty gives you specific legal rights, and you may also have other rights which vary from state to state. You may contact Ignition L.P. at:

Ignition L.P., 3102 Maple Ave., Suite 450, Dallas, TX 75201 02/09

For product support, call  
**1-866-315-0426**



Complies with the European Union's "Restriction of Hazardous Substances Directive," which protects the environment by restricting specific hazardous materials and products.

The Bluetooth® word mark and logos are owned by Bluetooth SIG, Inc. and any use of such marks by Ignition L.P. is under license. Other trademarks and trade names are those of their respective owners.

App Store is a service mark of Apple Inc.

Android and Google Play are trademarks of Google Inc.

© 2013. Ignition L.P. All rights reserved. Auvio is a registered trademark used by Ignition L.P.

Package and user documentation are recyclable. User documentation contains recycled material.



4000451, 4000474

06A13  
Printed in China