



PORTABLE BLUETOOTH CUBE SPEAKER

4000705, 4000706, 4000707, 4000714
User's Guide

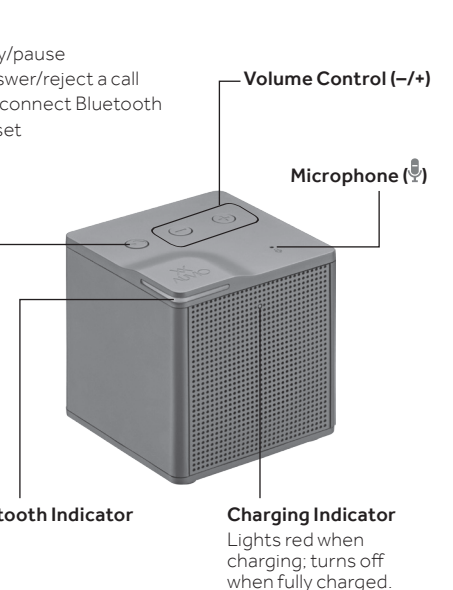
We hope you enjoy your AUVIO Portable Bluetooth® Cube Speaker. This speaker can sync with a Bluetooth-enabled device, allowing you to listen to music and receive hands-free calls. Please read this user's guide before using your new speaker.

Package Contents

- Portable Bluetooth Cube Speaker
- Micro-USB Charging Cable
- User's Guide

Specifications

Battery..... Rechargeable 500mAh lithium polymer
 Battery Charging Voltage..... DC 5V
 Battery Charging Time..... approx. 2 hours
 Operation Time..... up to 5 hours
 Frequency Response..... 150 Hz – 15 kHz
 Output Power..... 3 W
 Impedance..... 4 ohms
 S/N Ratio..... ≥ 65 dB
 Driver..... 1.5 in. (38mm) neodymium
 Bluetooth Protocol..... V4.0 +EDR
 Operation Range..... 30 ft. (9.14m)
 Specifications are subject to change and improvement without notice. Actual product may vary from the images found in this document.

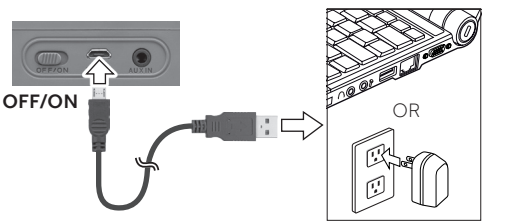


Charge Your Speaker

When the battery is low, the speaker beeps.

1. Connect the supplied Micro-USB charging cable to the speaker's **DC 5V** jack and the USB port of your computer or USB charger.
2. Unplug the charging cable when the speaker is fully charged.

Note: The speaker charges whether **ON** or **OFF**.



Lithium Battery Notes:

- Recycle lithium batteries. Do not dispose of them in the trash.
- Do not burn or bury batteries. Do not puncture or crush. Do not disassemble.
- Charge batteries on a fireproof surface away from flammable items or liquids.
- Do not charge inside an automobile, especially while driving.

Use Your Speaker

1. Turn on the speaker. The Bluetooth indicator flashes quickly as your speaker searches for Bluetooth devices.
2. Activate your device's Bluetooth function (refer to your device's user's guide). When your device locates **AUVIO BT Mono speaker**, select it. When paired, the indicator flashes slowly.
3. You can control your speaker through your device or with the speaker's **▶/◀** and **+ / -** buttons.

- If the electrolyte in the cells should get on your skin, thoroughly wash with soap and water. If in the eyes, rinse thoroughly with cool water. Immediately seek medical attention.
- Follow the instructions for charging the speaker and do not charge longer than recommended. Unplug the USB cable when the battery is charged.

1. Connect the supplied Micro-USB charging cable to the speaker's **DC 5V** jack and the USB port of your computer or USB charger.
2. Unplug the charging cable when the speaker is fully charged.

- If the electrolyte in the cells should get on your skin, thoroughly wash with soap and water. If in the eyes, rinse thoroughly with cool water. Immediately seek medical attention.
- Follow the instructions for charging the speaker and do not charge longer than recommended. Unplug the USB cable when the battery is charged.

- If the electrolyte in the cells should get on your skin, thoroughly wash with soap and water. If in the eyes, rinse thoroughly with cool water. Immediately seek medical attention.
- Follow the instructions for charging the speaker and do not charge longer than recommended. Unplug the USB cable when the battery is charged.

Connecting to a Bluetooth Device

1. Turn on the speaker. The Bluetooth indicator flashes quickly as your speaker searches for Bluetooth devices.
2. Activate your device's Bluetooth function (refer to your device's user's guide). When your device locates **AUVIO BT Mono speaker**, select it. When paired, the indicator flashes slowly.
3. You can control your speaker through your device or with the speaker's **▶/◀** and **+ / -** buttons.

- If the electrolyte in the cells should get on your skin, thoroughly wash with soap and water. If in the eyes, rinse thoroughly with cool water. Immediately seek medical attention.
- Follow the instructions for charging the speaker and do not charge longer than recommended. Unplug the USB cable when the battery is charged.

- If the electrolyte in the cells should get on your skin, thoroughly wash with soap and water. If in the eyes, rinse thoroughly with cool water. Immediately seek medical attention.
- Follow the instructions for charging the speaker and do not charge longer than recommended. Unplug the USB cable when the battery is charged.

- If the electrolyte in the cells should get on your skin, thoroughly wash with soap and water. If in the eyes, rinse thoroughly with cool water. Immediately seek medical attention.
- Follow the instructions for charging the speaker and do not charge longer than recommended. Unplug the USB cable when the battery is charged.

Disconnect Your Device

1. Turn on the speaker. The Bluetooth indicator flashes quickly as your speaker searches for Bluetooth devices.
2. Activate your device's Bluetooth function (refer to your device's user's guide). When your device locates **AUVIO BT Mono speaker**, select it. When paired, the indicator flashes slowly.
3. You can control your speaker through your device or with the speaker's **▶/◀** and **+ / -** buttons.

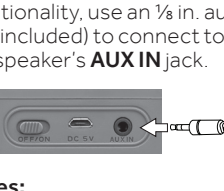
- If the electrolyte in the cells should get on your skin, thoroughly wash with soap and water. If in the eyes, rinse thoroughly with cool water. Immediately seek medical attention.
- Follow the instructions for charging the speaker and do not charge longer than recommended. Unplug the USB cable when the battery is charged.

- If the electrolyte in the cells should get on your skin, thoroughly wash with soap and water. If in the eyes, rinse thoroughly with cool water. Immediately seek medical attention.
- Follow the instructions for charging the speaker and do not charge longer than recommended. Unplug the USB cable when the battery is charged.

- If the electrolyte in the cells should get on your skin, thoroughly wash with soap and water. If in the eyes, rinse thoroughly with cool water. Immediately seek medical attention.
- Follow the instructions for charging the speaker and do not charge longer than recommended. Unplug the USB cable when the battery is charged.

Connecting with AUX IN

For an audio device without Bluetooth functionality, use an 1/8 in. audio cable (not included) to connect to the speaker's **AUX IN** jack.



- Bluetooth functionality is automatically deactivated when **AUX IN** is connected.
- Use the controls on your connected device to control playback.

FCC Information

This equipment has been tested and found to comply with the limits for a Class B digital device, pursuant to Part 15 of the FCC Rules. These limits are designed to provide reasonable protection against harmful interference in a

Limited Warranty

RadioShack warrants this product against defects in materials and workmanship under normal use by the original purchaser for **ninety (90) days** after the date of purchase from a RadioShack-owned store or an authorized RadioShack franchisee or dealer. **RADIOSHACK MAKES NO OTHER EXPRESS WARRANTIES.**

Device Not Pairing?

Many Bluetooth-enabled devices, such as speakers, remember the most recently paired source (music, smartphone, etc.) and automatically reconnect when turned on. This is convenient, but can prevent you from connecting to a new source.

Device Not Pairing?

If you can't pair your speaker, you may need to disconnect it from its previous source.

Device Not Pairing?

If you press **+ / -** and hear a beep, the speaker is at its maximum/minimum volume.

Device Not Pairing?

If you press **+ / -** and hear a beep, the speaker is at its maximum/minimum volume.

Device Not Pairing?

If you press **+ / -** and hear a beep, the speaker is at its maximum/minimum volume.

Device Not Pairing?

If you press **+ / -** and hear a beep, the speaker is at its maximum/minimum volume.

Device Not Pairing?

If you press **+ / -** and hear a beep, the speaker is at its maximum/minimum volume.

Device Not Pairing?

If you press **+ / -** and hear a beep, the speaker is at its maximum/minimum volume.

Device Not Pairing?

If you press **+ / -** and hear a beep, the speaker is at its maximum/minimum volume.

Device Not Pairing?

If you press **+ / -** and hear a beep, the speaker is at its maximum/minimum volume.

Device Not Pairing?

If you press **+ / -** and hear a beep, the speaker is at its maximum/minimum volume.

Device Not Pairing?

If you press **+ / -** and hear a beep, the speaker is at its maximum/minimum volume.

Device Not Pairing?

If you press **+ / -** and hear a beep, the speaker is at its maximum/minimum volume.

Device Not Pairing?

If you press **+ / -** and hear a beep, the speaker is at its maximum/minimum volume.

Device Not Pairing?

If you press **+ / -** and hear a beep, the speaker is at its maximum/minimum volume.