

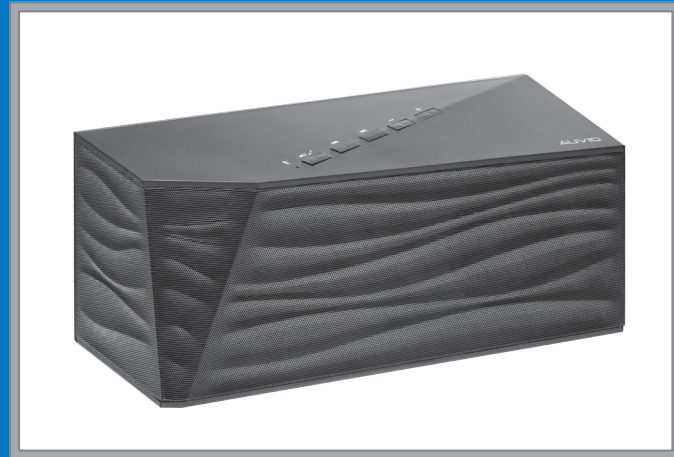


Bluetooth® Portable Speaker

Please read this user's guide before using your new speaker.

User's Guide

4000437



Package Contents

- Bluetooth Portable Speaker
- AC Adapter
- User's Guide

Features

- Rich, full, and dynamic stereo sound
- Rechargeable battery for up to 13 hours play time
- Built-in speakerphone for picking up calls
- USB charging port charges your devices
- Compatible with most Bluetooth enabled tablets, laptops, MP3 players, and smartphones with iOS or Android™ platforms

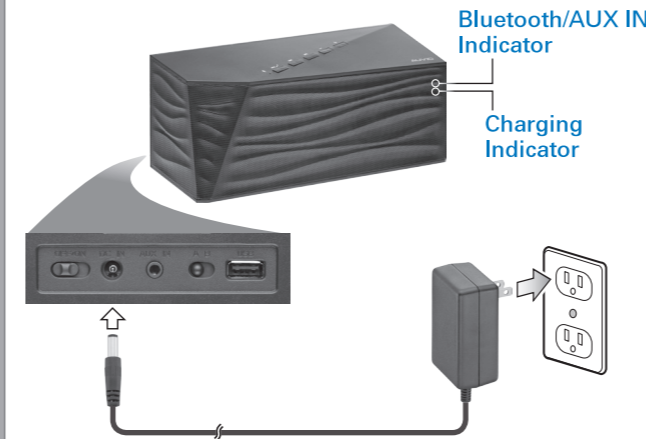
Note: You can download the free Auvio EQ App from the App StoreSM and Google PlayTM to customize your calls and music.

2

Power Your Speaker

Using the AC adapter, connect your speaker's **DC IN** jack to a standard wall outlet.

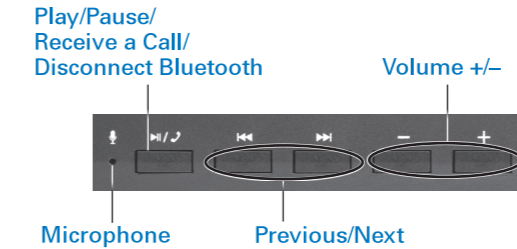
- If the battery power is very low, the charging indicator flashes red to alert you before turning off.
- The charging indicator lights red during charging and turns off when fully charged.
- A full charge takes about 5 hours. When fully charged, the speaker can operate for up to 13 hours at medium volume levels.



3

Use Your Speaker

1. Switch **ON** your speaker. The Bluetooth/AUX IN indicator flashes red and blue as the speaker searches for a Bluetooth-enabled device.
2. Activate your device's Bluetooth function (refer to your device's user's guide).
3. When **AUVIO4000437** appears in the Bluetooth devices list, pair it to your device.
4. You can control your speaker through your device or with the speaker's and buttons.



- If a smartphone is connected and you receive a call, answer the call by pressing and speak into the microphone (🎤).
- Press and hold for 4 seconds to disconnect Bluetooth. The speaker starts searching for other Bluetooth devices.

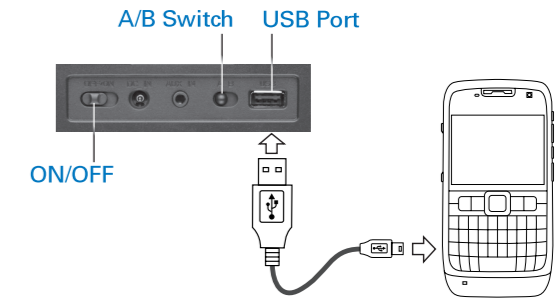
4

Note:

- If you are using iPhone and receive calls on the speaker, set your iPhone's volume to the desired level during the first call, the ringing tone will be at the set level for oncoming calls.
- If your device uses Android 2.1 and below, enter the password 0000 for Bluetooth connection.
- If the connected device moves too far away from the speaker, the speaker disconnects from the device and starts searching for another Bluetooth device.
- If the speaker malfunctions, reset it by pressing twice when the Bluetooth/AUX IN indicator flashes red and blue.

Charge Your Device

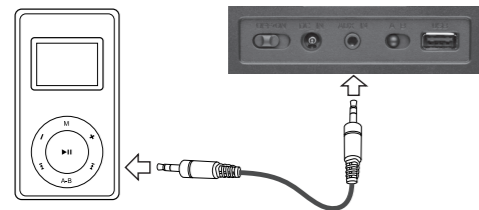
1. Set the **A/B** switch for charging your device: **A** for Apple, **B** for Samsung.
2. Use a USB cable (not included) to connect your device to the speaker's USB port.



5

Use AUX IN

For audio devices without Bluetooth function, use an audio cable (not included) to connect it to your speaker's **AUX IN** jack. The Bluetooth/AUX IN indicator lights red and then turns off.



Note:

- Bluetooth is automatically deactivated when **AUX IN** is connected.
- Bluetooth is deactivated if your device has an audio cable or earphones plugged in.
- The speaker controls only volume for **AUX IN** connections. Use the controls on your device to control music playback.

Care and Caution

- Do not operate the speaker if it has been damaged in any way.
- Do not place heavy objects on top of the speaker.
- To avoid electromagnetic interference, do not place the speaker on top of a TV or other electrical appliance.

6

Lithium Battery Notes:

- Recycle lithium batteries. Do not dispose of in the trash. Do not burn or bury batteries. Do not puncture or crush. Do not disassemble.
- Charge batteries on a fireproof surface away from flammable items or liquids.
- Do not charge inside an automobile, especially while driving.
- If the electrolyte in the cells gets on your skin, thoroughly wash with soap and water. If in the eyes, rinse thoroughly with cool water. Immediately seek medical attention.

Specifications

Power InputAC 100~240V 50/60Hz, or DC 12V, 2.5A
Output10W × 2 RMS (THD 10%)
USB Charging Output5V DC, 1A
Bluetooth Frequency Response100Hz – 18kHz
Bluetooth Connection Range30 ft. (9.1m)
Bluetooth ProtocolV2.1 + EDR Class 2
Drivers65mm neodymium × 2
S/N Ratio≥ 70dB (A weighted)
Impedance6 Ω
Dimensions (HWD)3.7 × 10 × 4.1 in (94×255×103mm)
Weight32.5 ounces (920g)

Specifications are subject to change and improvement without notice. Actual product may vary from the images found in this document.

7

FCC Information

This equipment has been tested and found to comply with the limits for a Class B digital device, pursuant to Part 15 of the FCC Rules. These limits are designed to provide reasonable protection against harmful interference in a residential installation. This equipment generates, uses and can radiate radio frequency energy and, if not installed and used in accordance with the instructions, may cause harmful interference to radio communications. However, there is no guarantee that interference will not occur in a particular installation. If this equipment does cause harmful interference to radio or television reception, which can be determined by turning the equipment off and on, the user is encouraged to try to correct the interference by one or more of the following measures:

- Reorient or relocate the receiving antenna.
- Increase the separation between the equipment and receiver.
- Connect the equipment into an outlet on a circuit different from that to which the receiver is connected.
- Consult the dealer or an experienced radio/TV technician for help.

If you cannot eliminate the interference, the FCC requires that you stop using your product. Changes or modifications not expressly approved by Ignition L.P. could void the user's authority to operate the equipment.

This device complies with Part 15 of the FCC Rules. Operation is subject to the following two conditions: (1) This device may not cause harmful interference, and (2) this device must accept any interference received, including interference that may cause undesired operation.

Limited Warranty

Warning: Changes or modifications to this unit not expressly approved by the party responsible for compliance could void the user's authority to operate the equipment. Ignition L.P. warrants this product against defects in materials and workmanship under normal use by the original purchaser for **ninety (90) days** after the date of purchase. IGNITION L.P. MAKES NO OTHER EXPRESS WARRANTIES.

This warranty does not cover: (a) damage or failure caused by or attributable to abuse, misuse, failure to follow instructions, improper installation or maintenance, alteration, accident, Acts of God (such as floods or lightning), or excess voltage or current; (b) improper or incorrectly performed repairs by persons who are not a Ignition L.P. Authorized Service Facility; (c) consumables such as fuses or batteries; (d) ordinary wear and tear or cosmetic damage; (e) transportation, shipping or insurance costs; (f) costs of product removal, installation,

8

set-up service, adjustment or reinstallation; and (g) claims by persons other than the original purchaser.

Should a problem occur that is covered by this warranty, take the product and the sales receipt as proof of purchase date to the place of purchase. Ignition L.P. will, at its option, unless otherwise provided by law: (a) repair the product without charge for parts and labor; (b) replace the product with the same or a comparable product; or (c) refund the purchase price. All replaced parts and products, and products on which a refund is made, become the property of Ignition L.P. New or reconditioned parts and products may be used in the performance of warranty service. Repaired or replaced parts and products are warranted for the remainder of the original warranty period. You will be charged for repair or replacement of the product made after the expiration of the warranty period.

IGNITION L.P. EXPRESSLY DISCLAIMS ALL WARRANTIES AND CONDITIONS NOT STATED IN THIS LIMITED WARRANTY. ANY IMPLIED WARRANTIES THAT MAY BE IMPOSED BY LAW, INCLUDING THE IMPLIED WARRANTY OF MERCHANTABILITY AND, IF APPLICABLE, THE IMPLIED WARRANTY OF FITNESS FOR A PARTICULAR PURPOSE, SHALL EXPIRE ON THE EXPIRATION OF THE STATED WARRANTY PERIOD.

EXCEPT AS DESCRIBED ABOVE, IGNITION L.P. SHALL HAVE NO LIABILITY OR RESPONSIBILITY TO THE PURCHASER OF THE PRODUCT OR ANY OTHER PERSON OR ENTITY WITH RESPECT TO ANY LIABILITY, LOSS OR DAMAGE CAUSED DIRECTLY OR INDIRECTLY BY USE OR PERFORMANCE OF THE PRODUCT OR ARISING OUT OF ANY BREACH OF THIS WARRANTY, INCLUDING, BUT NOT LIMITED TO, ANY DAMAGES RESULTING FROM INCONVENIENCE AND ANY LOSS OF TIME, DATA, PROPERTY, REVENUE, OR PROFIT AND ANY INDIRECT, SPECIAL, INCIDENTAL, OR CONSEQUENTIAL DAMAGES, EVEN IF IGNITION L.P. HAS BEEN ADVISED OF THE POSSIBILITY OF SUCH DAMAGES.

Some states do not allow limitations on how long an implied warranty lasts or the exclusion or limitation of incidental or consequential damages, so the above limitations or exclusions may not apply to you. This warranty gives you specific legal rights, and you may also have other rights which vary from state to state. You may contact Ignition L.P. at:

Ignition L.P., 3102 Maple Ave., Suite 450, Dallas, TX 75201 02/09

For product support, call
1-866-315-0426

9

Get more from your audio and video equipment. See what you've been missing. With Auvio, **you control the experience.**

Auvio was established by a group of technophiles to provide **high quality audio and video products** without the high sticker price. The Auvio philosophy is for you to experience audio and video as it was intended to be: **pure and distortion free.**

We know electronics can be intimidating. Auvio **simplifies your experience** by providing the right products, with the right specs, to work with your equipment.

Be confident about your purchase: your new Auvio product incorporates the **latest technology**, is built to the **highest quality** standards, and **reduces environmental impact** by complying with RoHS environmental restrictions.

The Bluetooth® word mark and logos are owned by Bluetooth SIG, Inc. and any use of such marks by Ignition L.P. is under license. Other trademarks and trade names are those of their respective owners.

Google Play and Android are trademarks of Google Inc.

Apple is a trademark of Apple Inc., registered in the United States and other countries.

Samsung is a registered trademark of Samsung Electronics Co., Ltd.

© 2013. Ignition L.P. All rights reserved. Auvio is a registered trademark used by Ignition L.P.

Package and user documentation are recyclable. User documentation contains recycled material.

Printed in China 03A13 4000437

10