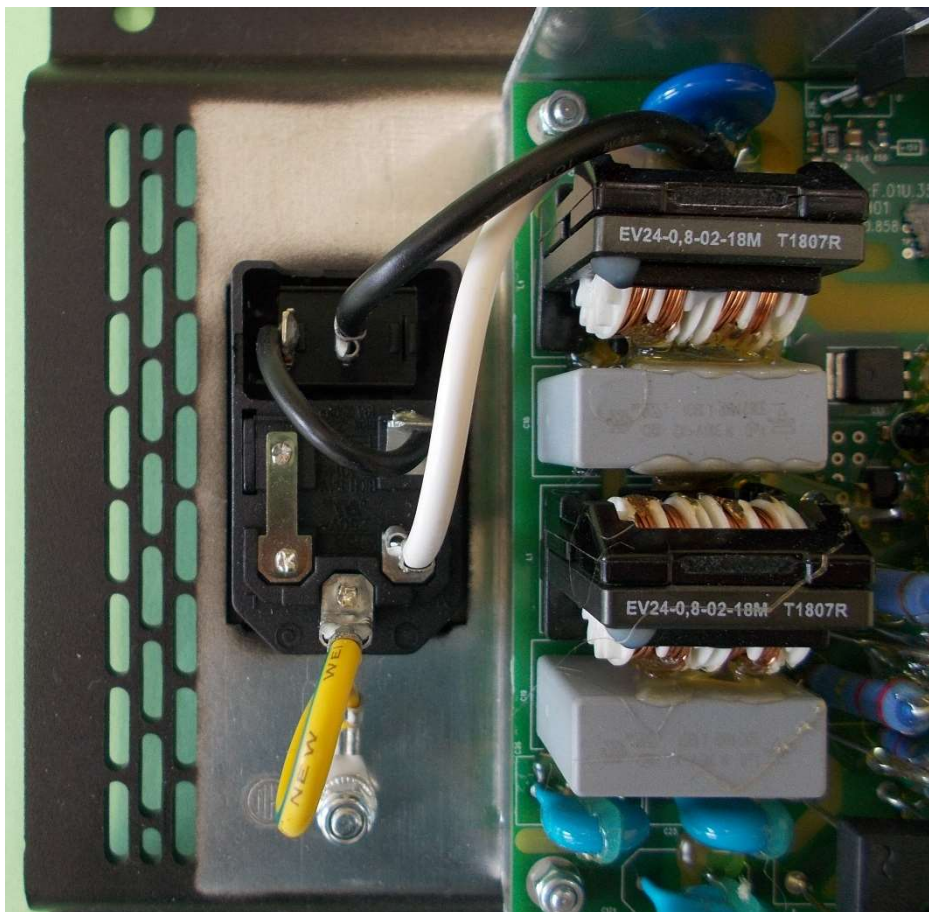




TESTED  
IN GERMANY

Active speaker ZLX  
FCC ID ESVZLX  
Internal Photos

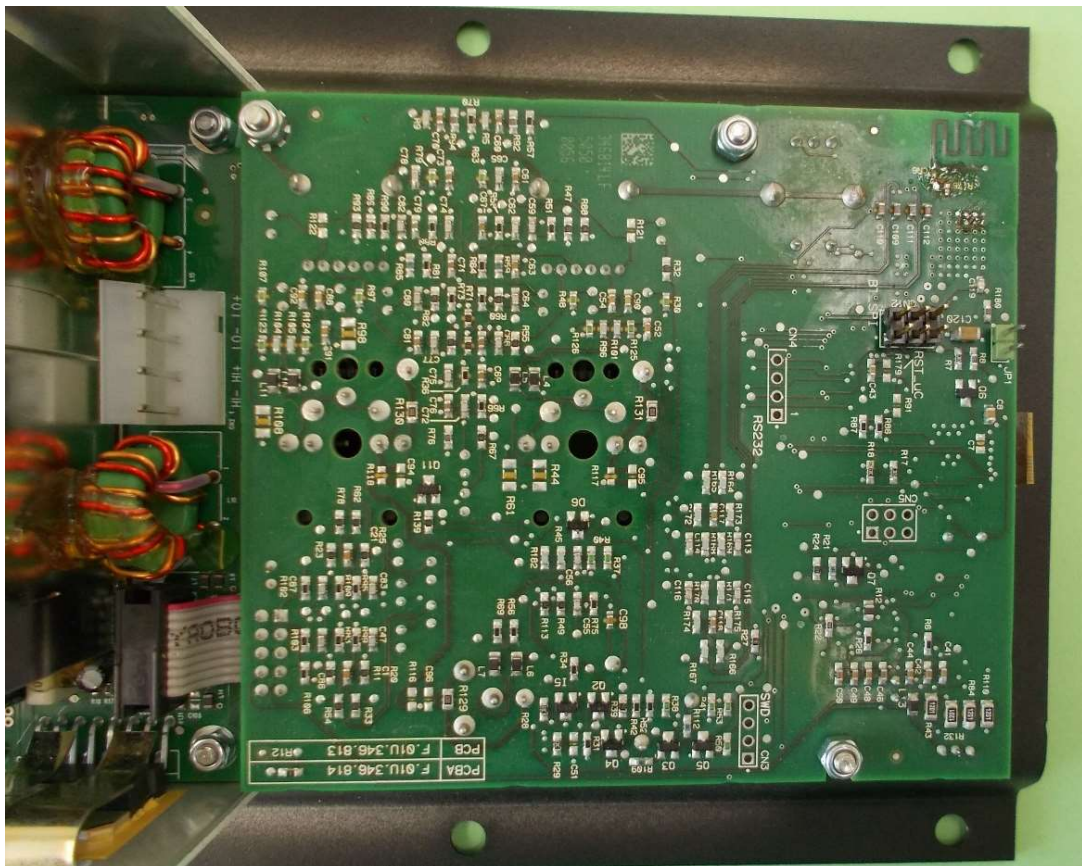
Version ZLX-12BT, Sample 02, Serial no.: 095414385334570009 (tested under PKM ref. no.: 18/06-0005)





TESTED  
IN GERMANY

Active speaker ZLX  
FCC ID ESVZLX  
Internal Photos

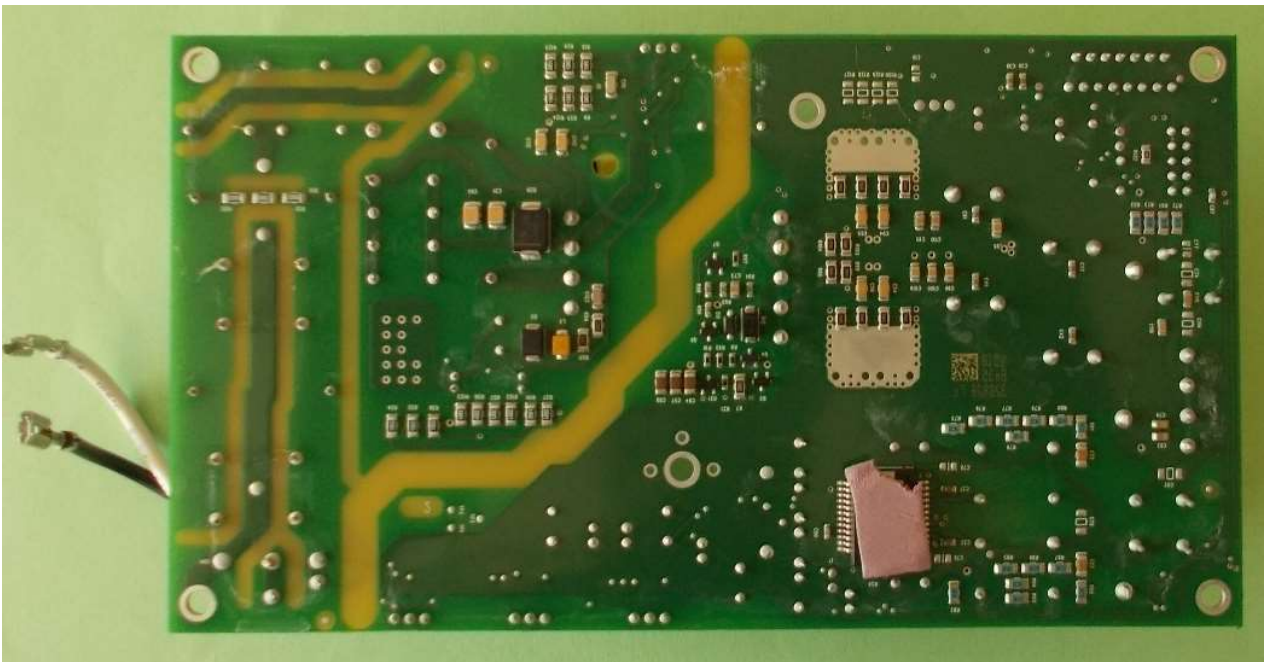
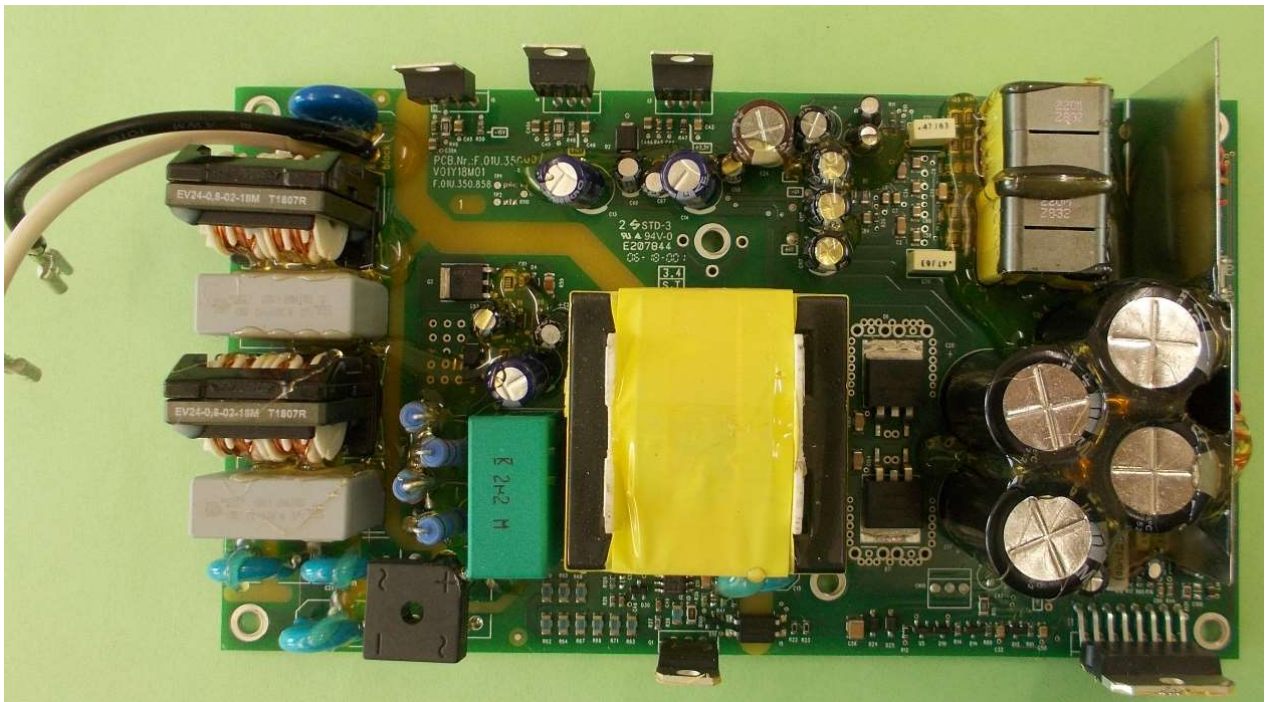


PKM electronic GmbH, Ohmstrasse 1, 84160 Frontenhausen  
Tel.: + 49 (0) 8732 6381 - Fax: + 49 (0) 8732 2345 - E-mail: [info@pkm.eu.com](mailto:info@pkm.eu.com) - Website: [www.pkm.eu.com](http://www.pkm.eu.com)



TESTED  
IN GERMANY

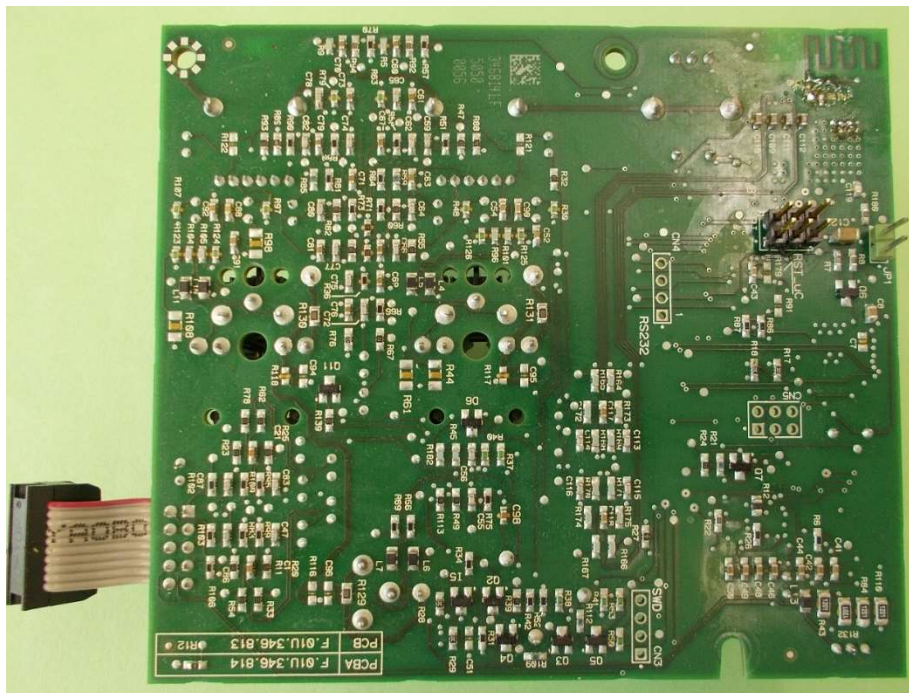
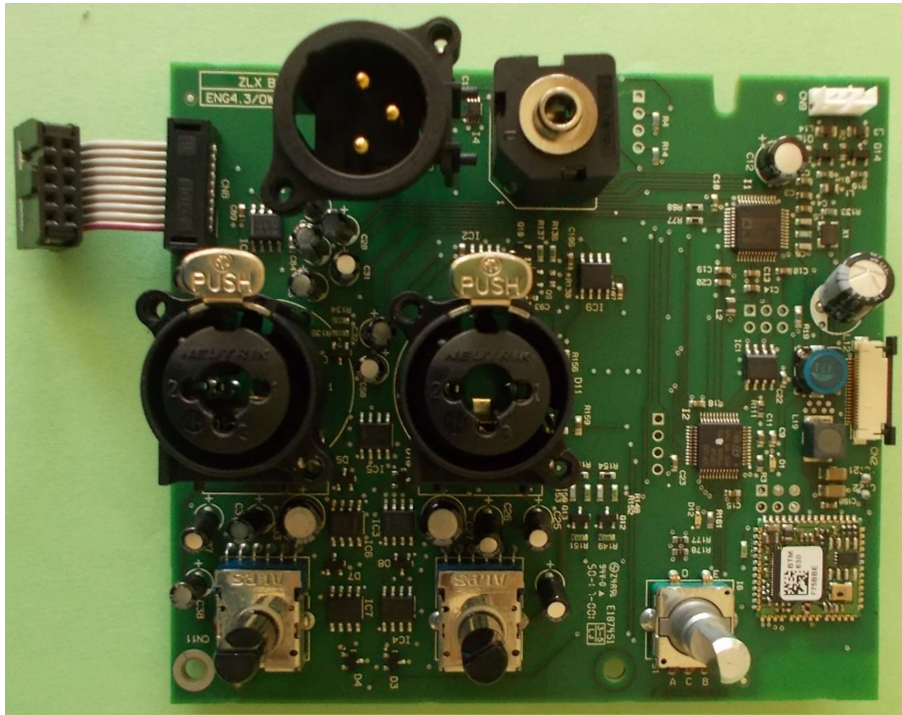
Active speaker ZLX  
FCC ID ESVZLX  
Internal Photos





TESTED  
IN GERMANY

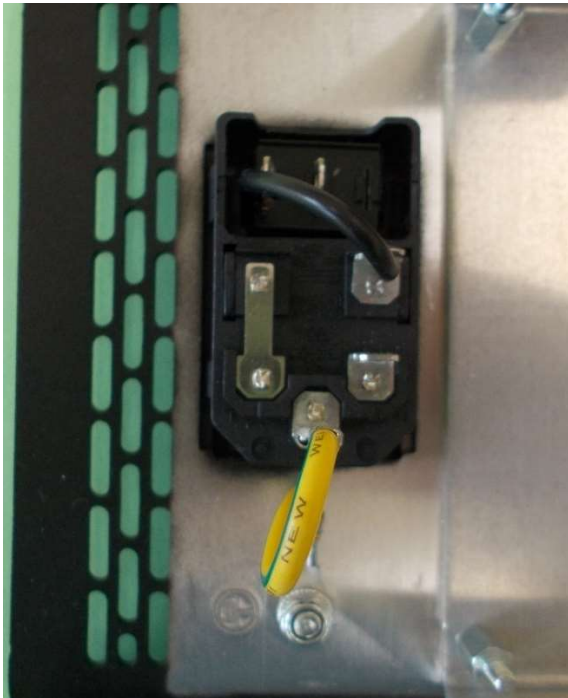
# Active speaker ZLX FCC ID ESVZLX Internal Photos





TESTED  
IN GERMANY

Active speaker ZLX  
FCC ID ESVZLX  
Internal Photos

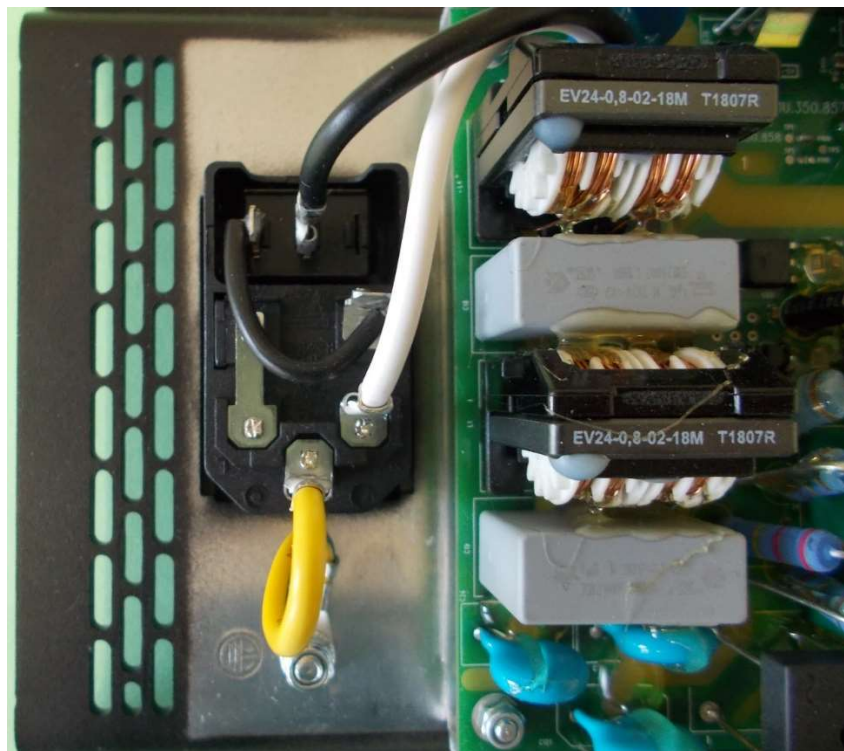




TESTED  
IN GERMANY

# Active speaker ZLX FCC ID ESVZLX Internal Photos

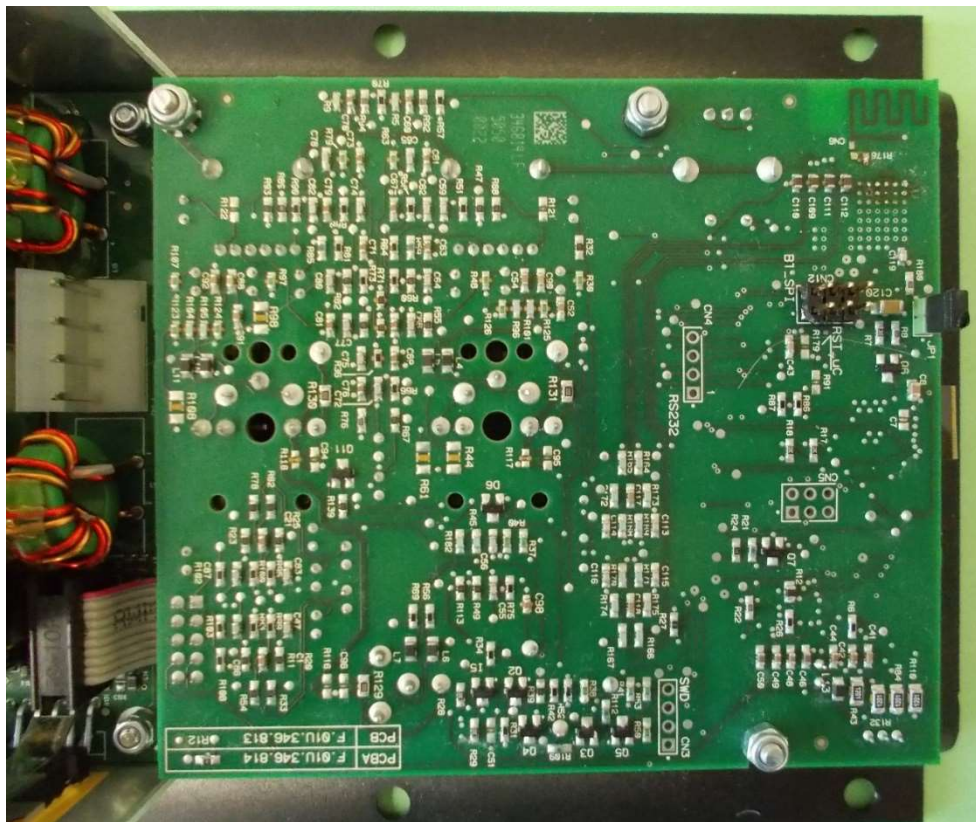
Version ZLX-15BT, Sample 02: Serial no.: 095414485334640007 (tested under PKM ref. no.: 18/06-0006)





TESTED  
IN GERMANY

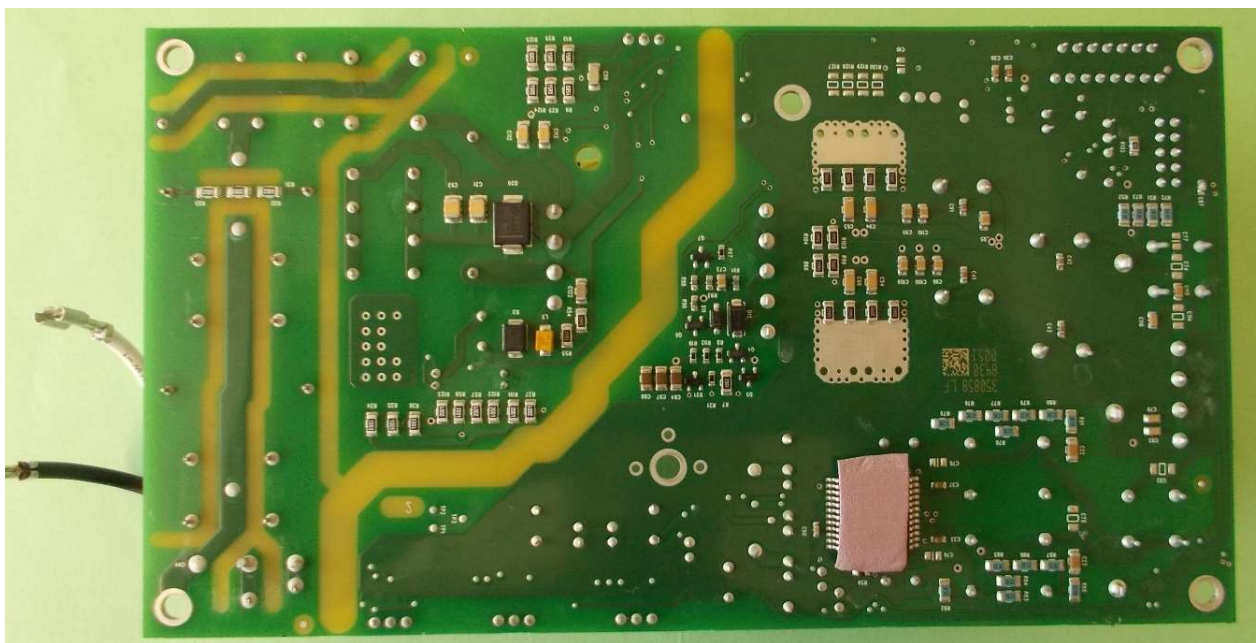
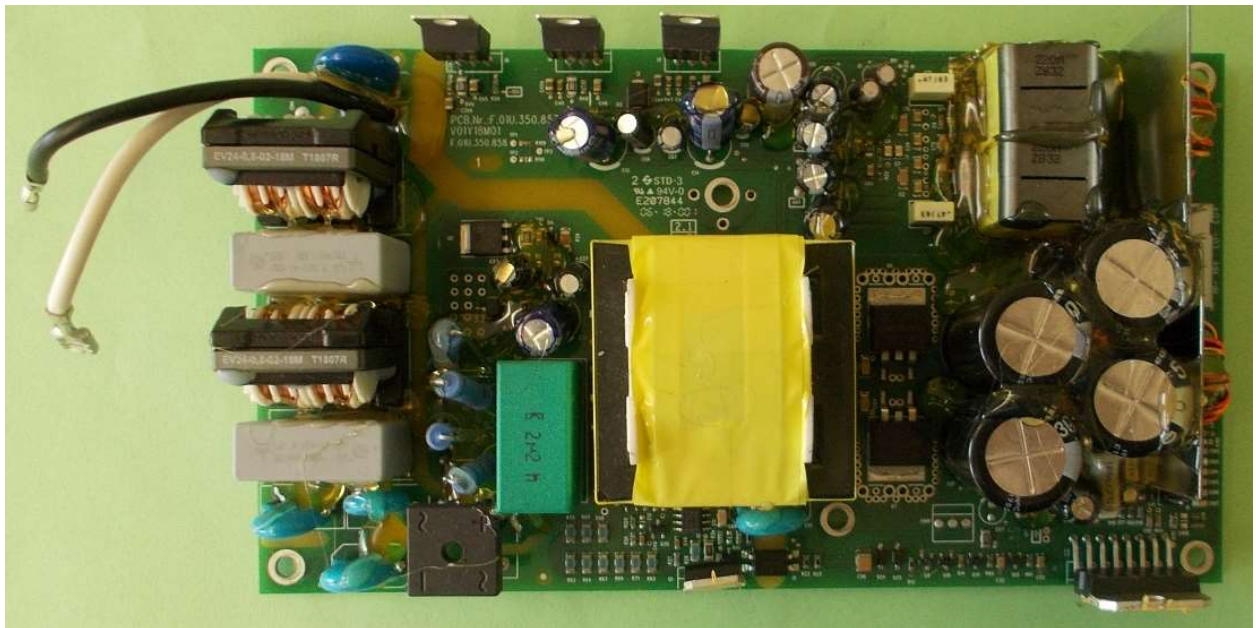
# Active speaker ZLX FCC ID ESVZLX Internal Photos





TESTED  
IN GERMANY

Active speaker ZLX  
FCC ID ESVZLX  
Internal Photos

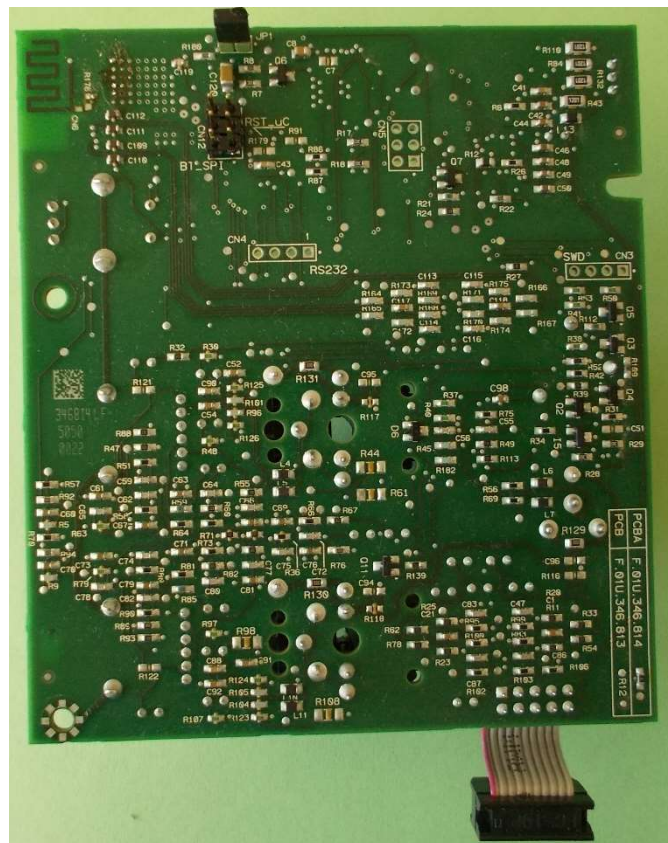
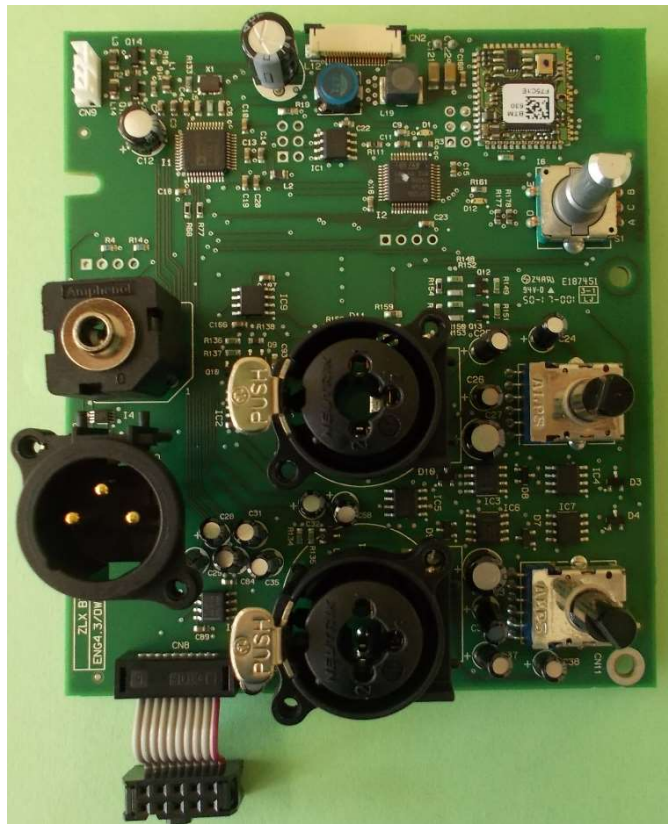






TESTED  
IN GERMANY

Active speaker ZLX  
FCC ID ESVZLX  
Internal Photos



PKM electronic GmbH, Ohmstrasse 1, 84160 Frontenhausen  
Tel.: + 49 (0) 8732 6381 - Fax: + 49 (0) 8732 2345 - E-mail: info@pkm.eu.com - Website: www.pkm.eu.com



TESTED  
IN GERMANY

Active speaker ZLX  
FCC ID ESVZLX  
Internal Photos

