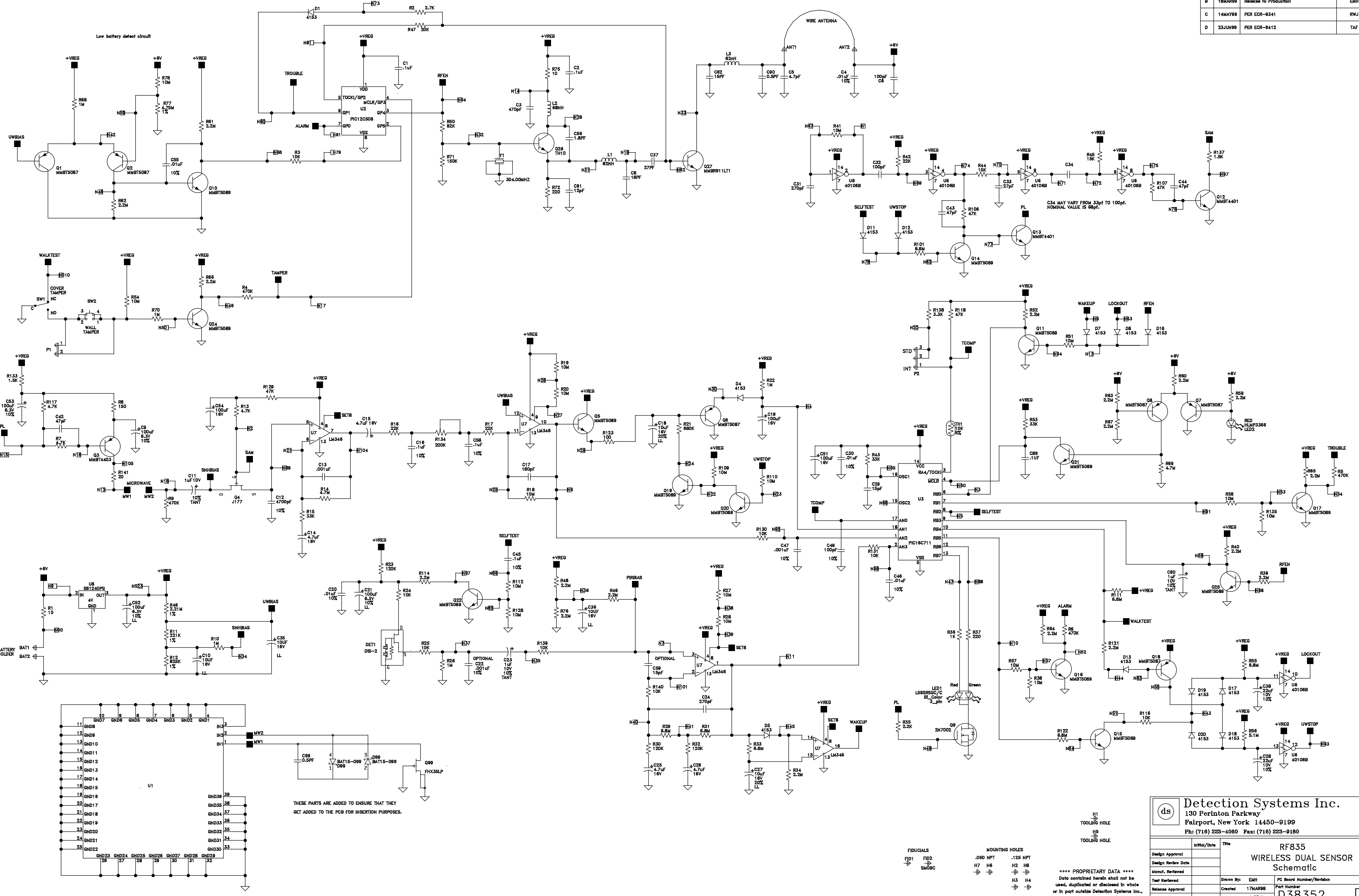


REV	DATE	DESCRIPTION	DRAWN BY
B	18MAR99	Release to Production	EMH
C	14MAY99	PER ECR-8341	RWJ
D	23JUN99	PER ECR-8412	TAF



THESE PARTS ARE ADDED TO ENSURE THAT THEY GET ADDED TO THE PCB FOR INSERTION PURPOSES.

H1
TOOLING HOLE
H5
TOOLING HOLE

FINISHES
R11
R12
SMOBC

MOUNTING HOLES
.050 NPT
H7 H6
H2 H8
H3 H4

**** PROPRIETARY DATA ****
Data contained herein shall not be used, duplicated or disclosed in whole or in part outside Detection Systems Inc., without expressed written permission of same.

Detection Systems Inc. 130 Perinton Parkway Fairport, New York 14450-9199 PH: (716) 223-4060 FAX: (716) 223-9180		Title	
		RF835 WIRELESS DUAL SENSOR Schematic	
Design Approval	Infil/Date	Drawn By	PC Board Number/Revision
Design Review Date		Created	17MAR98
Manufact. Reviewed		Release Date	
Test Reviewed		Sheet	1 OF 1
Release Date		Part Number	D38352
		Rev	D