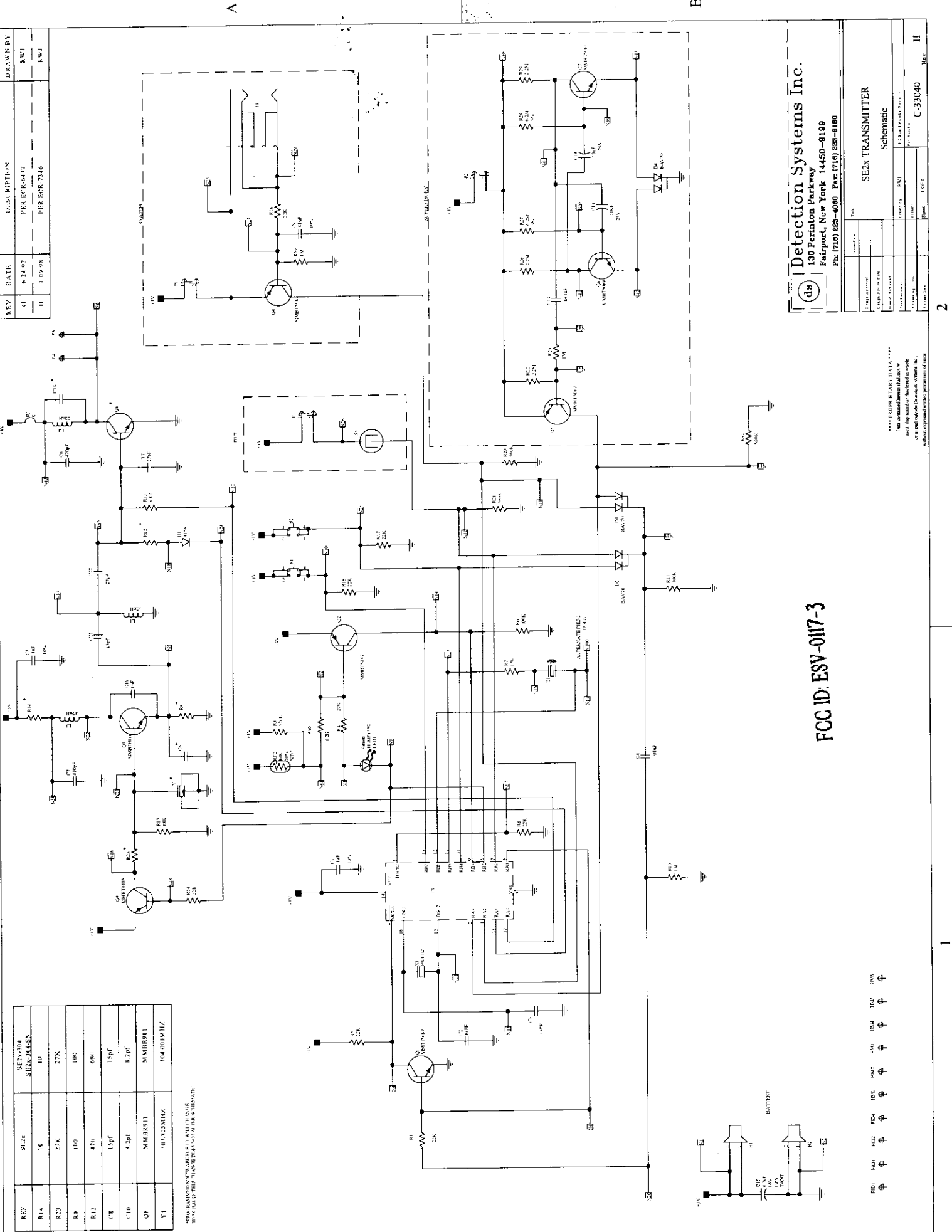


REV	DATE	DESCRIPTION	DRAWN BY
G	6-24-97	PER ECR-6437	RWJ
H	1-09-98	PER ECR-7346	RWJ

REF	SE2x	SE2x-304 ID	SE2x-JULSEN ID
R14	10		
R23	27K		
R9	100		
R12	470		
C8	15pf		
C10	8.2pf		
Q8	MM18911		
Y1	30.4K55MHZ		
			104.000MHZ

NOTE: DIMENSIONS ARE PER MIL SPECIFICATIONS UNLESS OTHERWISE SPECIFIED.



FCC ID: ESV-0117-3

Detection Systems Inc.  
130 Perinton Parkway  
Fairport, New York 14450-9189  
Ph: (716) 263-4000 Fax: (716) 263-8180

Part No.	SE2x TRANSMITTER
Rev.	1.0
Drawn By	RWJ
Checked By	
Approved By	
Date	
Sheet	1 OF 1
Part No.	C-33040
Rev.	11

\*\*\* PROPRIETARY DATA \*\*\*  
This document contains information that is the property of Detection Systems Inc. and is not to be distributed outside of the company without expressed written permission of management.

F10 F11 F12 F13 F14 F15 F16 F17 F18 F19 F20 F21 F22 F23 F24 F25 F26 F27 F28 F29 F30 F31 F32 F33 F34 F35 F36 F37 F38 F39 F40 F41 F42 F43 F44 F45 F46 F47 F48 F49 F50 F51 F52 F53 F54 F55 F56 F57 F58 F59 F60 F61 F62 F63 F64 F65 F66 F67 F68 F69 F70 F71 F72 F73 F74 F75 F76 F77 F78 F79 F80 F81 F82 F83 F84 F85 F86 F87 F88 F89 F90 F91 F92 F93 F94 F95 F96 F97 F98 F99 F100