

Date: 9/12/2013

Re: Model 6299 Latitude™ Rock Springs Point of Care (Consult)

Communicator: Internal Photos

The Guidant Corporation (a wholly owned subsidiary of Boston Scientific Corporation doing business as Boston Scientific Cardiac Rhythm Management, hereinafter referred to as BSC Model 6299 LATITUDE™ Rock Springs Point of Care (a.k.a., Consult) is an in-clinic or hospital monitor for use with inductive telemetry enabled BSC implantable pulse generators in the Cognis, Teligen, Progeny, Ingenio, Insignia, and Altrua devices.

The following are internal photos of the Model 6299.

Figure 2. Internal Frame Separated from Main Board (for reference only)

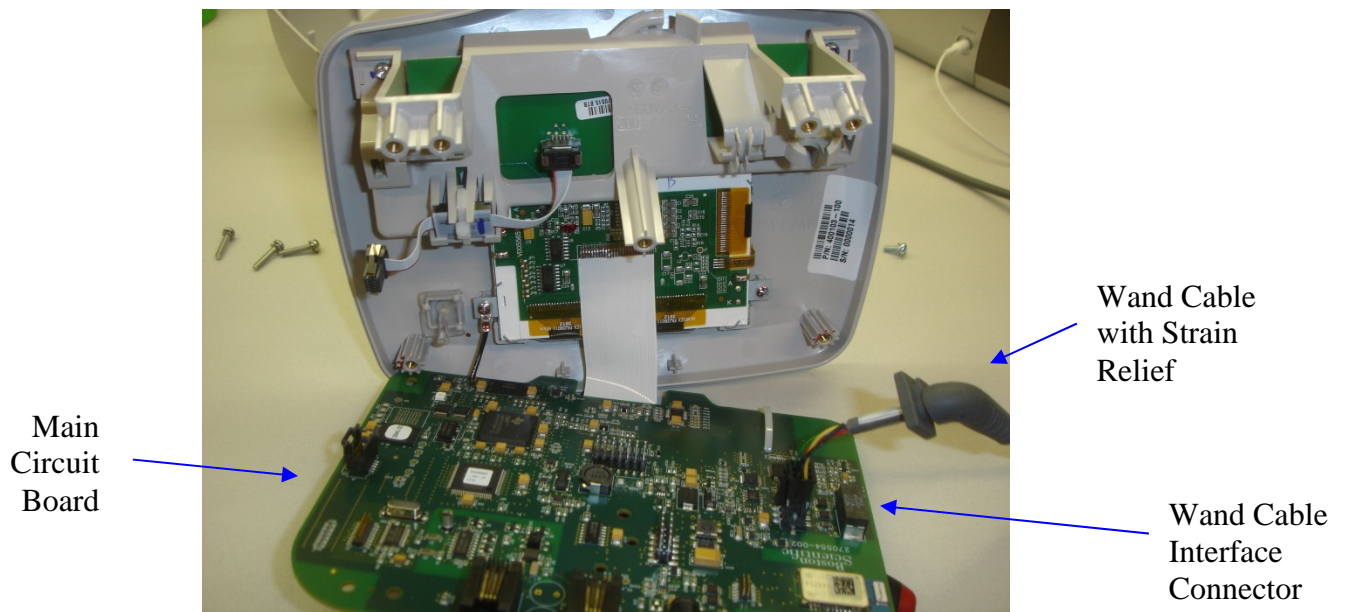


Figure 2. Main Board – Top Side (for reference only)

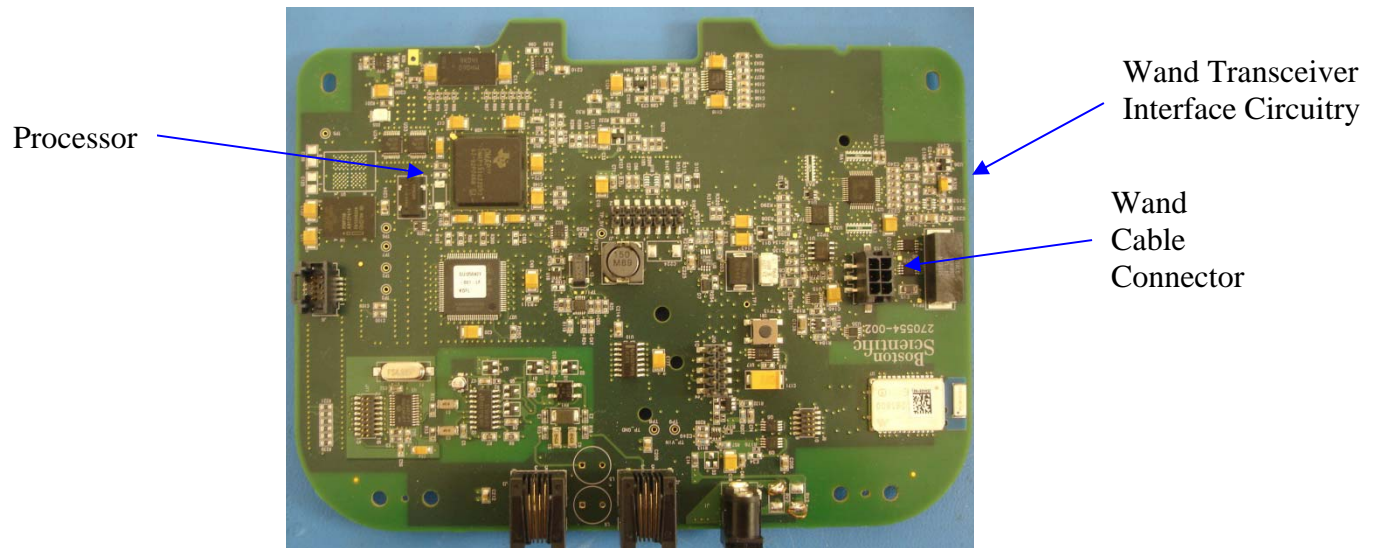


Figure 3. Main Board – Bottom Side (for reference only)

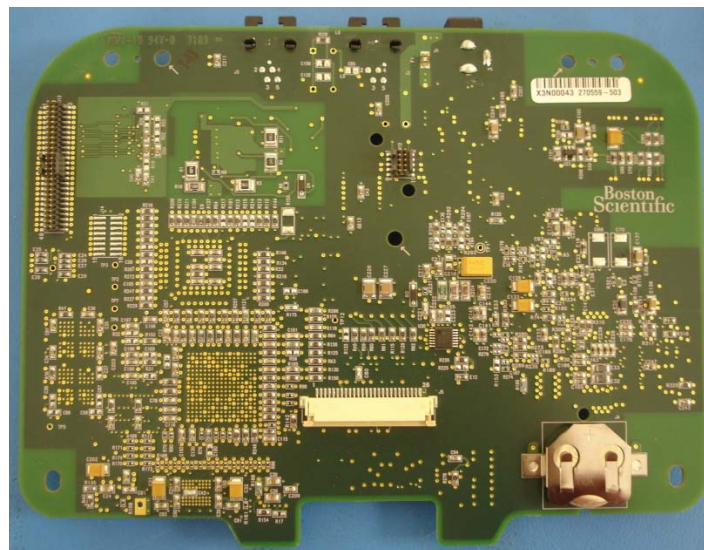


Figure 4. Wand Printed Circuit Assembly – Top Side (for reference only)

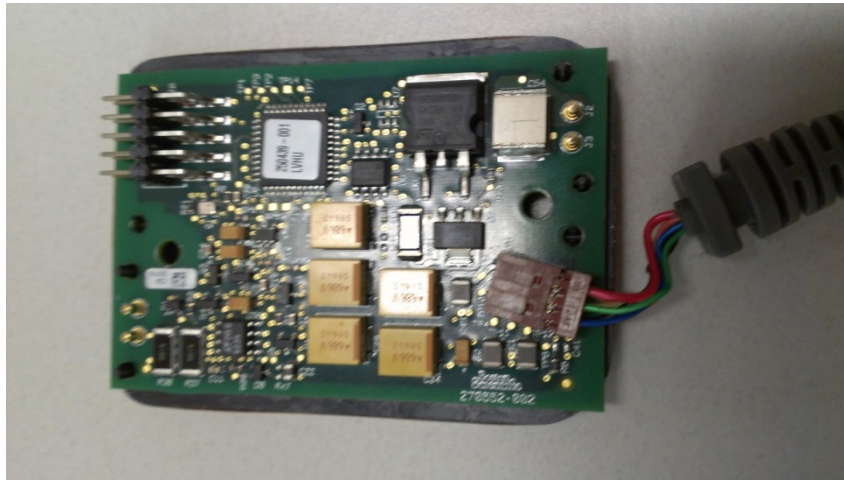


Figure 5. Wand Printed Circuit Assembly – Bottom Side (for reference only)

