

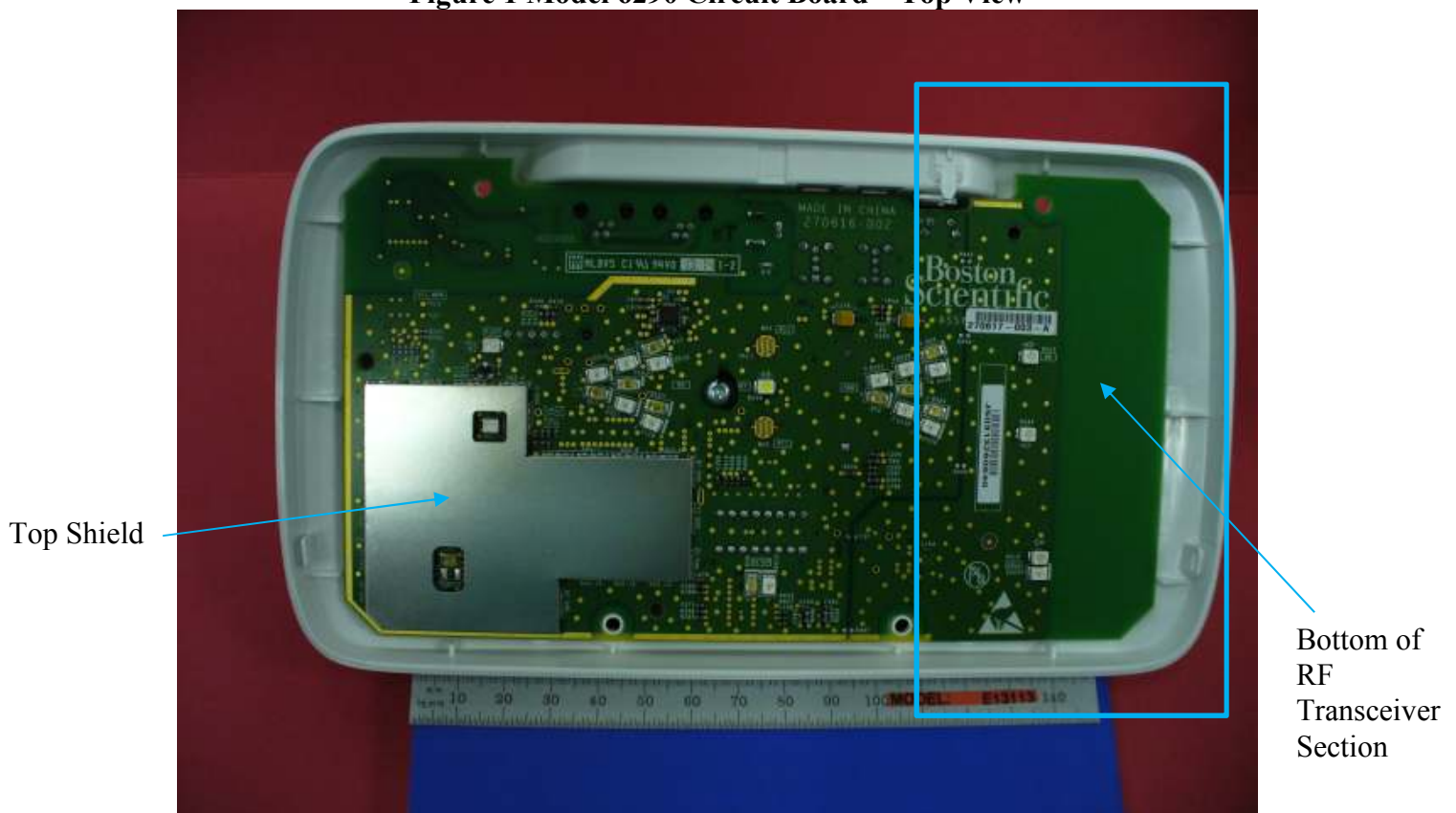
**Date:** 8/13/2013

**Re:** Model 6290 Latitude™ Communicator: Internal Photos

The Guidant Corporation (a wholly owned subsidiary of Boston Scientific Corporation doing business as Boston Scientific Cardiac Rhythm Management) Model 6290 LATITUDE™ Communicator is an in-home patient monitor. The Model 6290 Communicator provides radio frequency (RF) telemetry in the 402 – 405 MHz MICS band for use with radio frequency (RF) enabled BSC implantable pulse generators.

The following are internal photos of the Model 6290 LATITUDE™ Communicator.

**Figure 1 Model 6290 Circuit Board – Top View**



**Figure 2 Model 6290 Circuit Board – Bottom View**

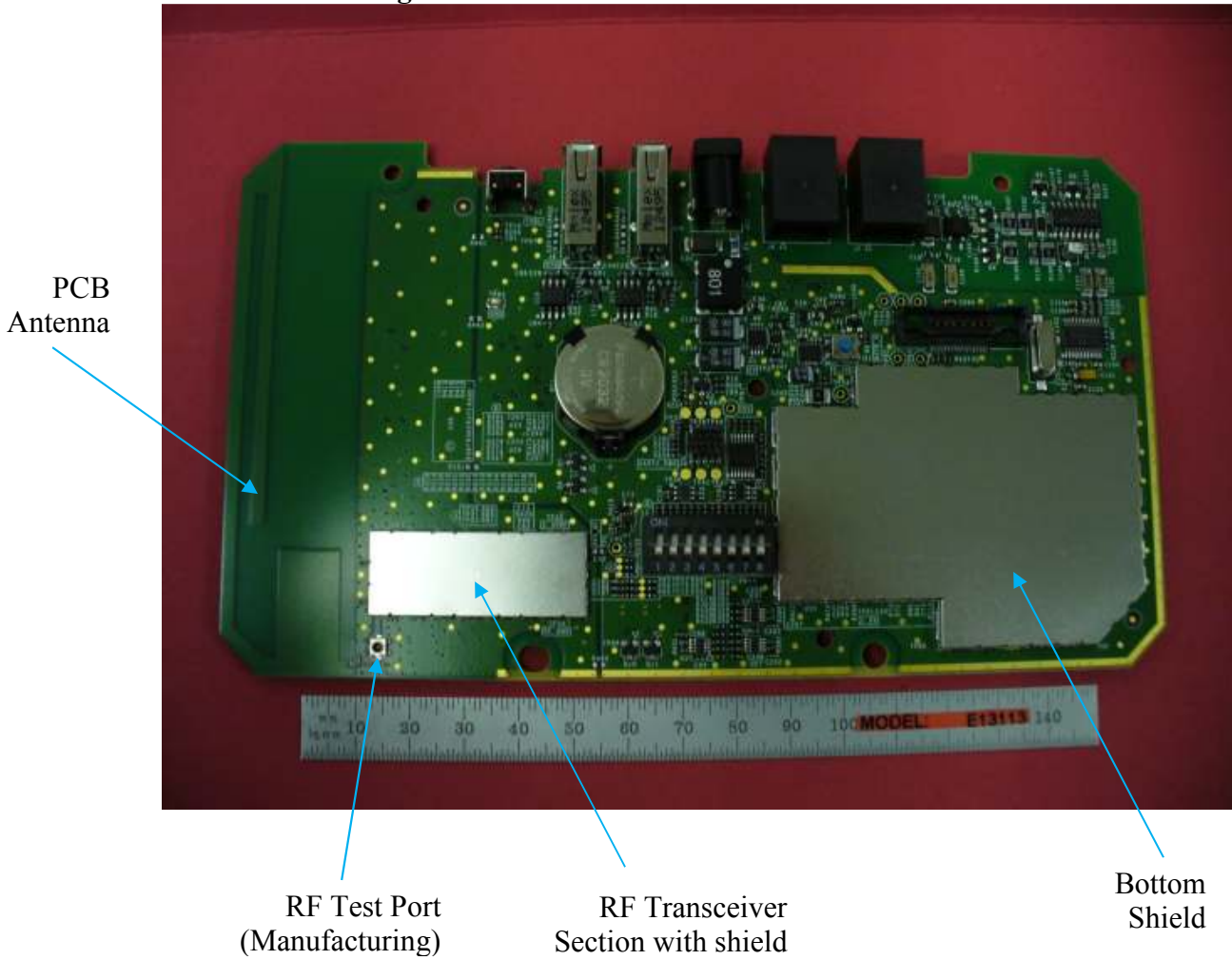


Figure 3 Model 6290 RF Transceiver Section (shield cover removed)

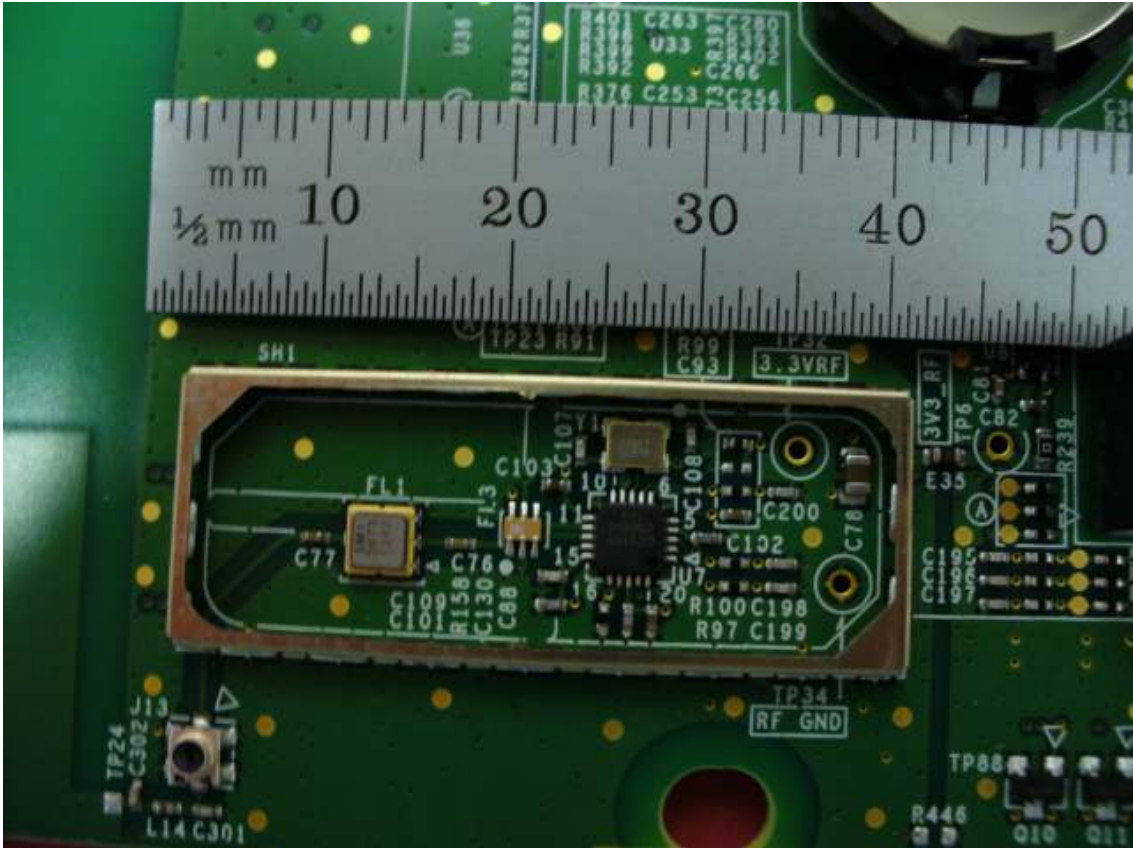




Figure 4 Model 6290 PCB Botom Shield Section (shield cover removed)

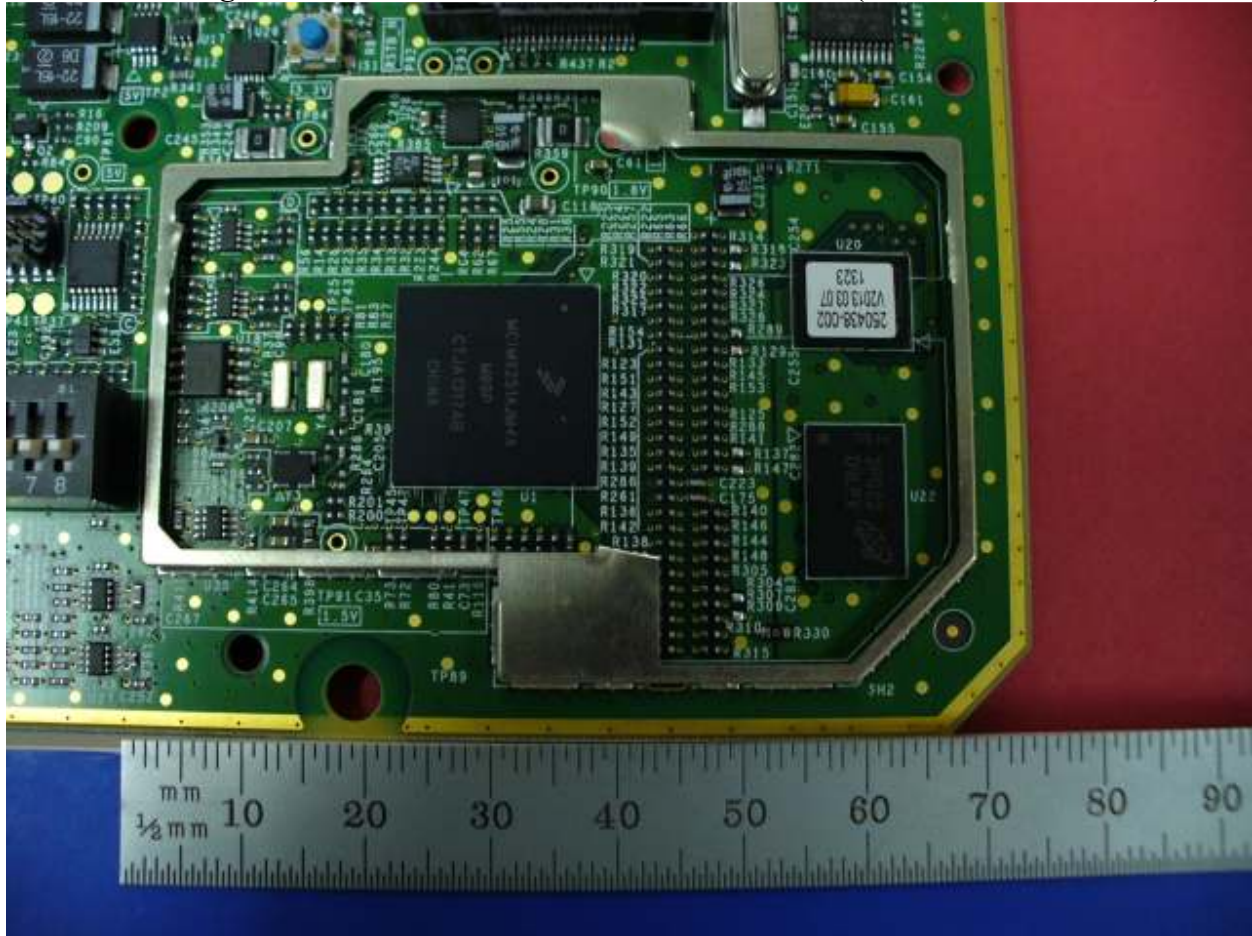


Figure 5 Model 6290 PCB Top Shield Section (shield cover removed)

