

Date: 7/14/2014

Re: Model 3200 Emblem S-ICD Programmer: Internal Photos

The Guidant Corporation (a wholly owned subsidiary of Boston Scientific Corporation doing business as Boston Scientific Cardiac Rhythm Management) Model 3200 Emblem S-ICD Programmer is a component of the Cameron Health/Boston Scientific S-ICD System, which is prescribed for patients when cardiac arrhythmia management is warranted. The programmer communicates wirelessly in the MICS (402-405 MHz) frequency band with the implanted S-ICD device to enable adjustment of programmable settings and data collection during implantation procedures and device/patient follow-up exams.

The Model 3200 Programmer consists of a commercial tablet computer connected to a proprietary RF printed circuit assembly known as the Programmer Radio Board (PRB). The tablet computer and PRB are placed in a common mechanical housing. The Emblem S-ICD Programmer antenna, "Telemetry Wand", is attached to the PRB through an RF connector that is accessible from outside of the programmer housing. The Telemetry Wand (Model 3203) includes an integrated 3 meter cable to allow the user to place the antenna for optimal performance.

The following pages include internal photos of the Model 3200 Programmer.



Figure 1 Model 3200 Programmer – Internal (Top)



Programmer
Radio Board
(PRB)

Figure 2 Model 3200 Programmer – Internal (Bottom)

RF Section
RF Shield
Telemetry
Wand
Connector

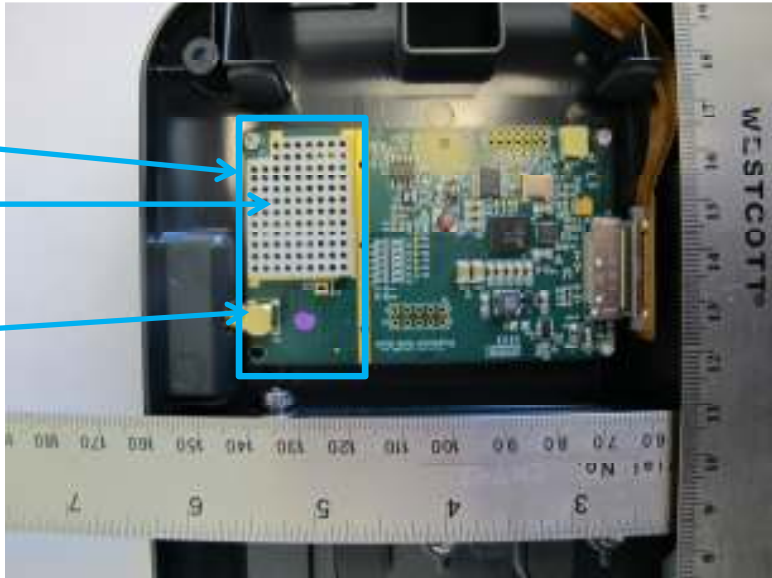


Figure 3 Model 3200 Programmer – PRB (Top)

RF Section
Telemetry
Wand
Connector

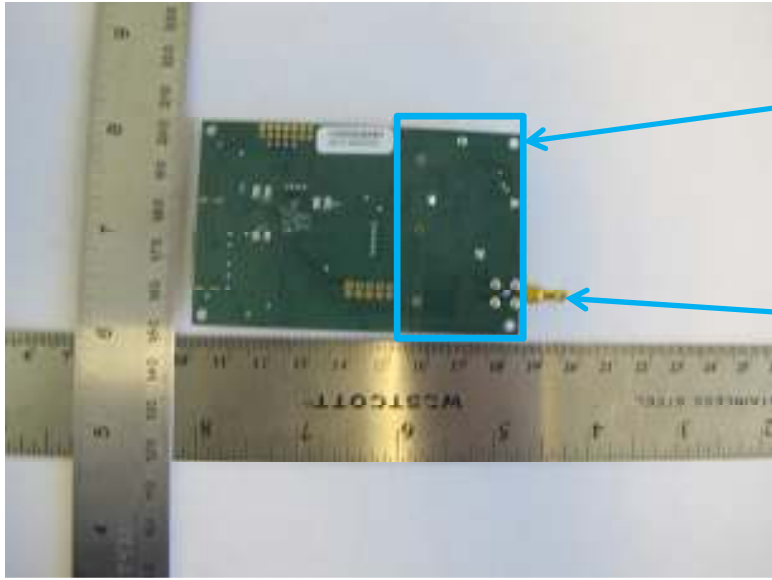


Figure 4 Model 3200 Programmer – PRB (Bottom)

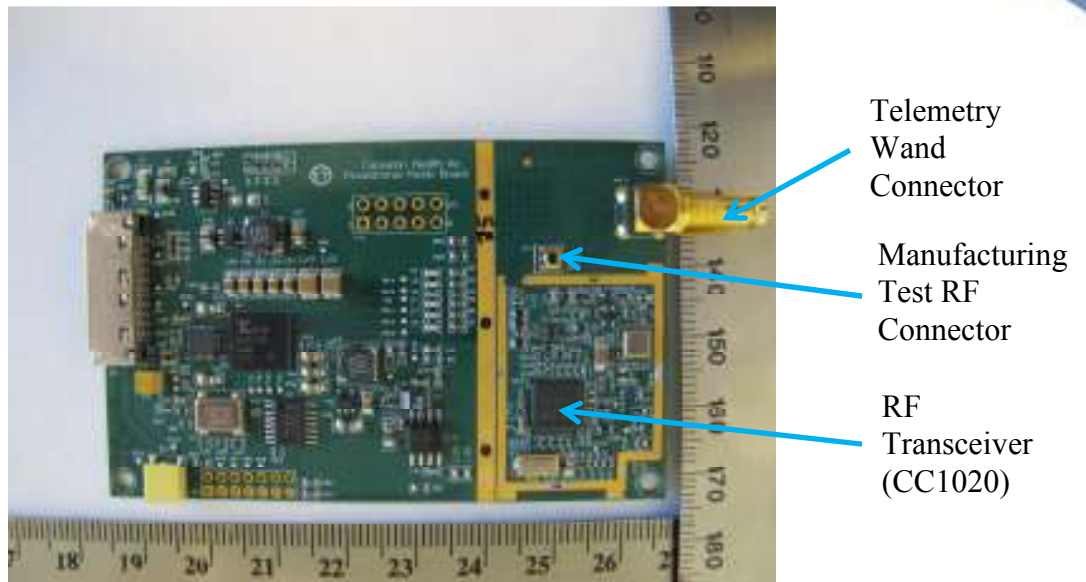


Figure 5 Model 3200 Programmer – PRB Top (Shield Removed)

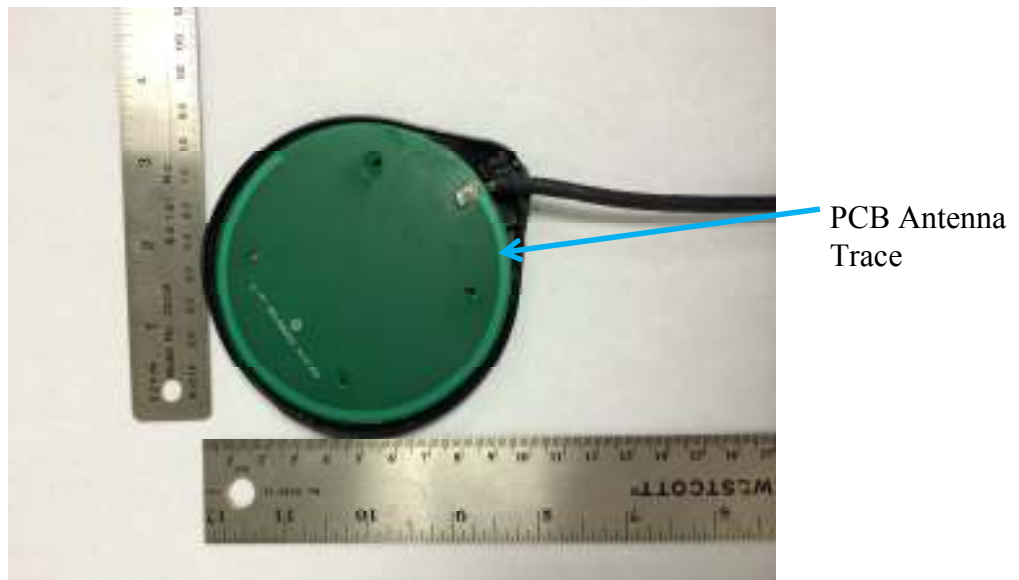


Figure 6 Model 3200 Programmer – Telemetry Wand PCB (Top)

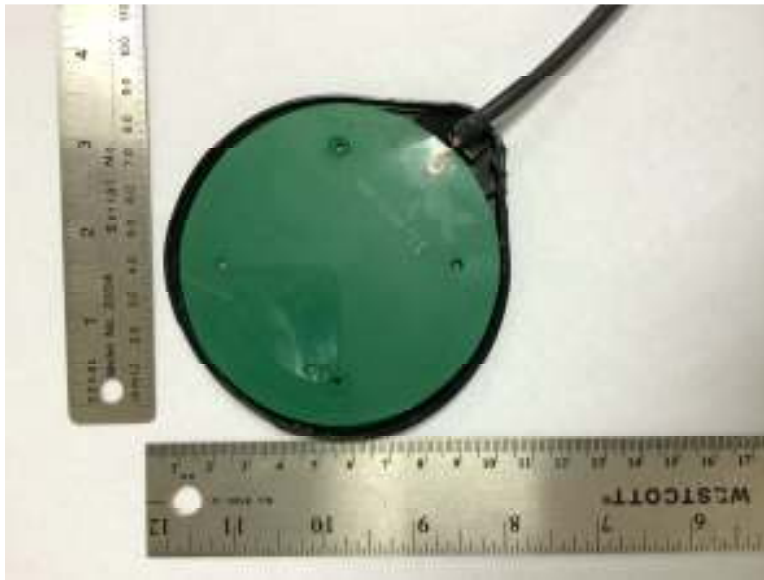


Figure 7 Model 3200 Programmer – Telemetry Wand PCB (Bottom)

For the Telemetry Wand cable, see the Model 3200 Programmer External Photos Exhibit.