

## Photographs of EUT Setup and Antenna Location

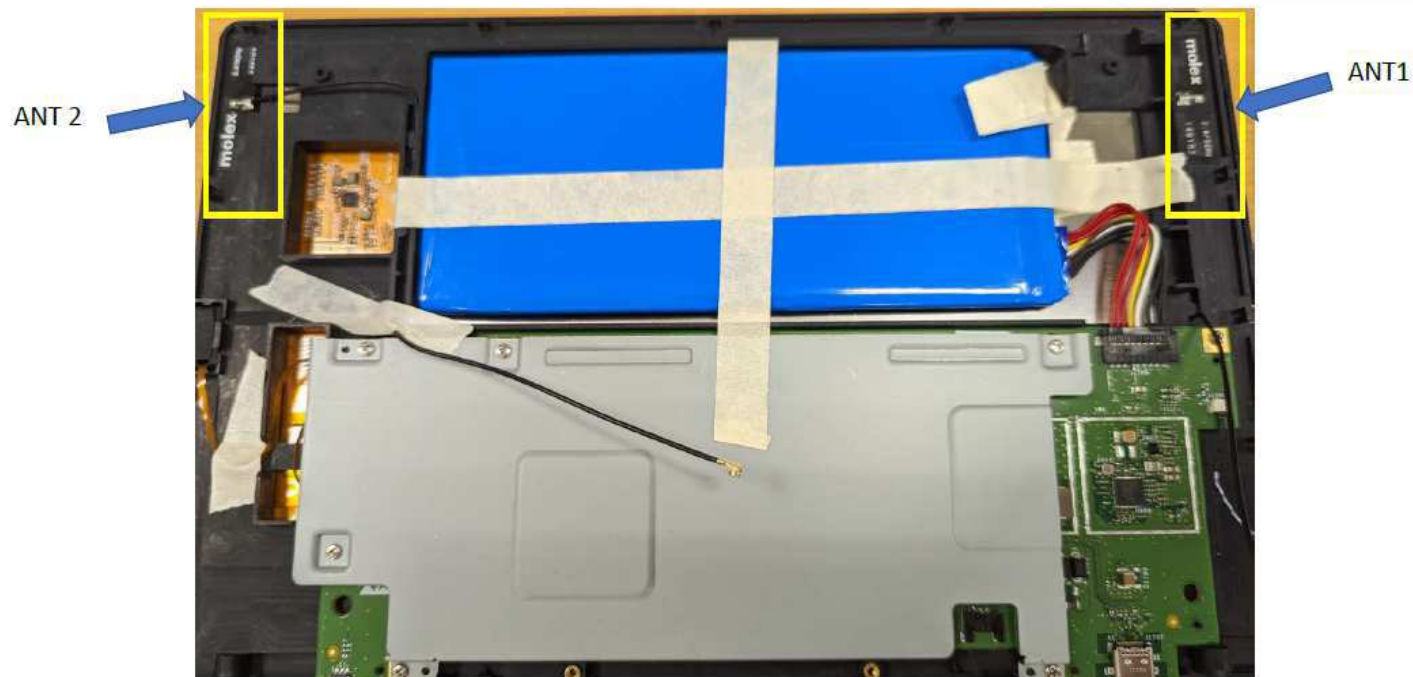
The photographs of EUT and setup for SAR testing are shown as follows.



Antenna	To Top Side	To Bottom Side	To Left Side	To Right Side
	(mm)	(mm)	(mm)	(mm)
WALN//BT Ant 0	6.7	121.4	2.6	249
WALN Ant 1	6.7	121.4	249	2.6

## Antenna placement

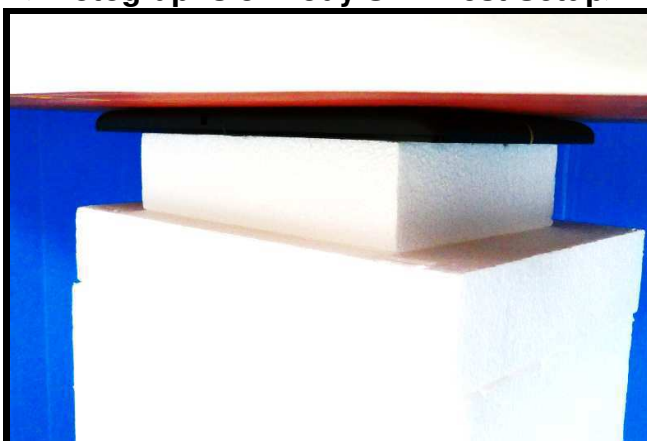
**JABIL**  
ENGINEERED SOLUTIONS GROUP



**Note:**

1. The ANT 1 and ANT2 in above picture is equal to the name of Ant 0 and Ant 1 respectively from the previous page.
2. The name of Ant 0 and Ant 1 were used to perform SAR test results on SAR report and appendixes.

<Photographs of Body SAR Test Setup>



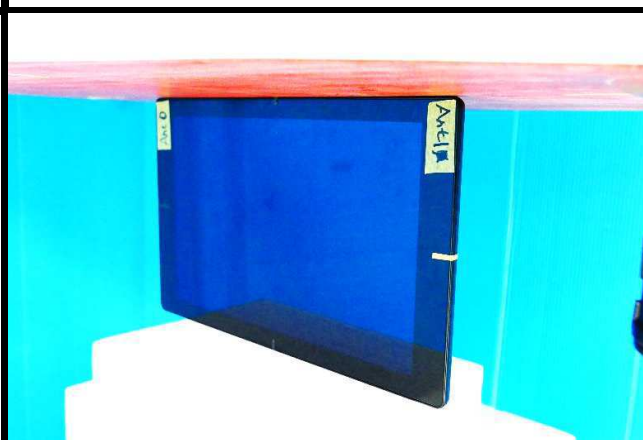
Rear Face of EUT Tested at 0 mm



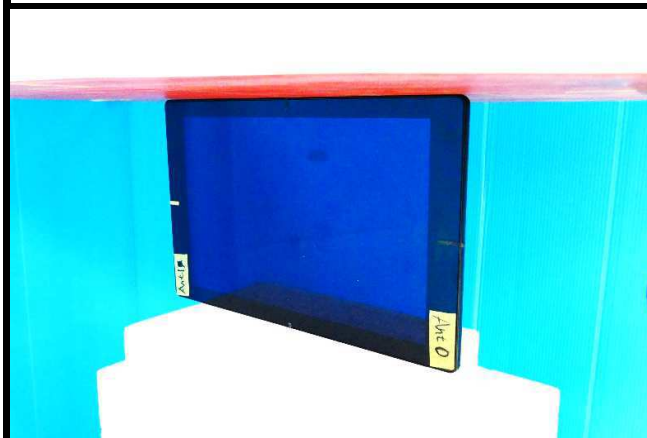
Left Side of EUT Tested at 0 mm



Right Side of EUT Tested at 0 mm

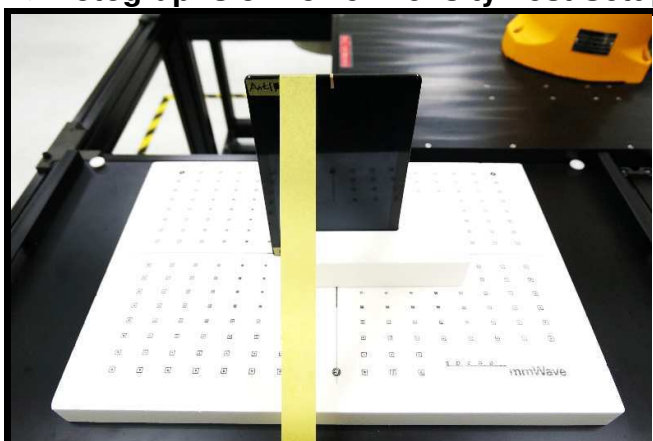


Top Side of EUT Tested at 0 mm



Bottom Side of EUT Tested at 0 mm

<Photographs of Power Density Test Setup>



Right Side of EUT Tested at 0 mm