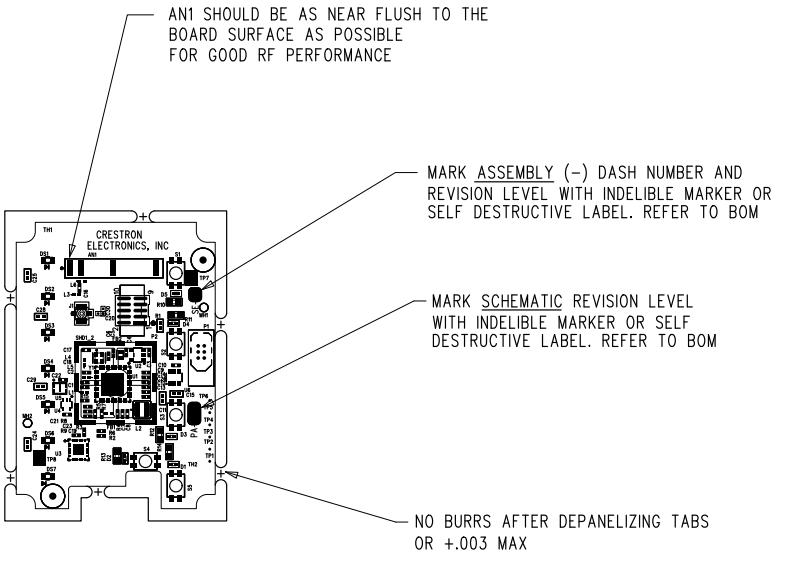
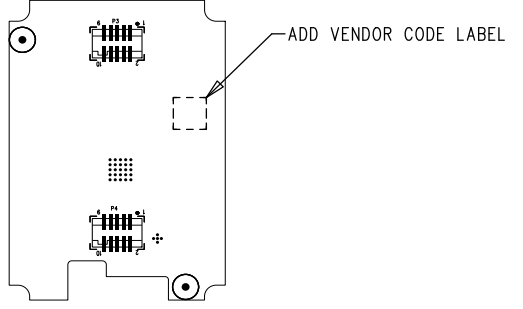


THESE DRAWINGS AND SPECIFICATIONS ARE THE EXCLUSIVE PROPERTY OF CRESTRON ELECTRONICS, INC., AND ARE ISSUED IN STRICT CONFIDENCE. DISCLOSURE OR REPRODUCTION IN WHOLE OR PART, WITHOUT PRIOR WRITTEN PERMISSION, IS PROHIBITED EXCEPT FOR THE MANUFACTURE OF ARTICLES FOR CRESTRON ELECTRONICS, INC.

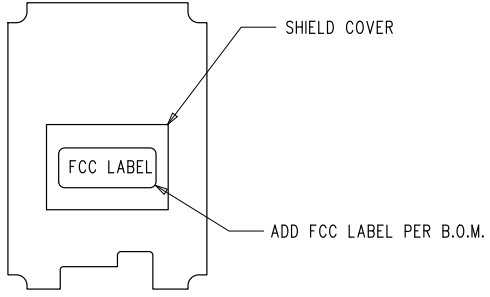
REVISIONS			
REV	DESCRIPTION	DATE	APPROVED
A	INITIAL PROTOTYPE ISSUE PER EW02443		



CRESTRON ELECTRONICS-PB07807-A  
COMPONENT SIDE VIEW  
ASSEMBLY TOP SIDE



CRESTRON ELECTRONICS-PB07807-A  
COMPONENT SIDE VIEW  
ASSEMBLY BOTTOM SIDE

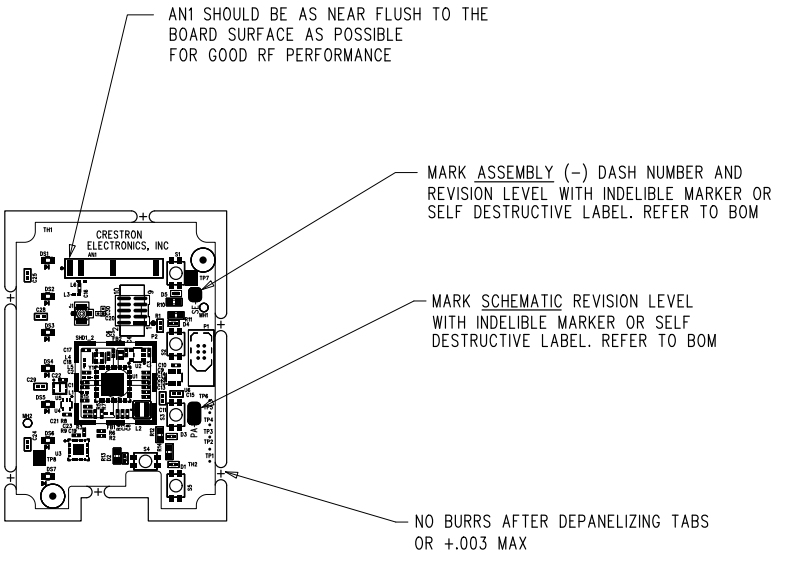


- NOTES:** (UNLESS OTHERWISE SPECIFIED)
- MANUFACTURE:** THE MANUFACTURE, ACCEPTANCE AND EVALUATION OF THE PRINTED CIRCUIT BOARD ASSEMBLY WILL BE IN ACCORDANCE WITH THE LATEST REVISIONS OF IPC-A-610 FOR CLASS 2 ASSEMBLIES (WHEN APPLICABLE).
  - CONDUCTOR SPECS:** MINIMUM CONDUCTOR WIDTH: .005  
MINIMUM CONDUCTOR SPACING: .006  
MINIMUM LEAD PITCH: .020
  - SOLDERING :** ALL VIAS TO BE FREE OF SOLDER.

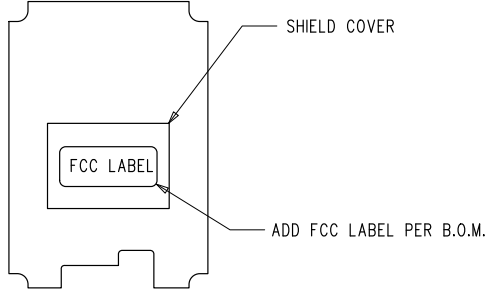
CLW-SERIES		PA07807-1	
FINISHED GOODS	SORT NAME	ASSEMBLY PART NO/VERSION	DESCRIPTION
USED ON			
UNLESS OTHERWISE SPECIFIED: ALL DIMENSIONS ARE IN INCHES TOLERANCES ARE: FRACTIONS ± 1/64      ANGLES ± 1/2° DECIMALS .X ± .1    .XX ± .01    .XXX ± .005 REMOVE ALL BURRS BREAK SHARP EDGES .010R MAX		<b>CRESTRON</b> 22 LINK DRIVE, ROCKLEIGH, N.J. 07647 <b>Electronics Inc</b> (201) 767-3400    FAX (201) 767-7576	
DO NOT SCALE DRAWING		NAME	DATE
SETUP FOR "ATE"		DRAWN BY	L.M. 07/22/19
		CHECKED	
		ENGR APPVL	T.G. 07/22/19
		MFG APPVL	
SIZE	DRAWING NO.	REV	
C	AD07807	A	
SCALE: FULL			FILENAME: 07807AAA.PCB
			SHEET 1 OF 1

THESE DRAWINGS AND SPECIFICATIONS ARE THE EXCLUSIVE PROPERTY OF CRESTRON ELECTRONICS, INC., AND ARE ISSUED IN STRICT CONFIDENCE. DISCLOSURE OR REPRODUCTION IN WHOLE OR PART, WITHOUT PRIOR WRITTEN PERMISSION, IS PROHIBITED EXCEPT FOR THE MANUFACTURE OF ARTICLES FOR CRESTRON ELECTRONICS, INC.

REVISIONS			
REV	DESCRIPTION	DATE	APPROVED
A	INITIAL PROTOTYPE ISSUE PER EW02443		

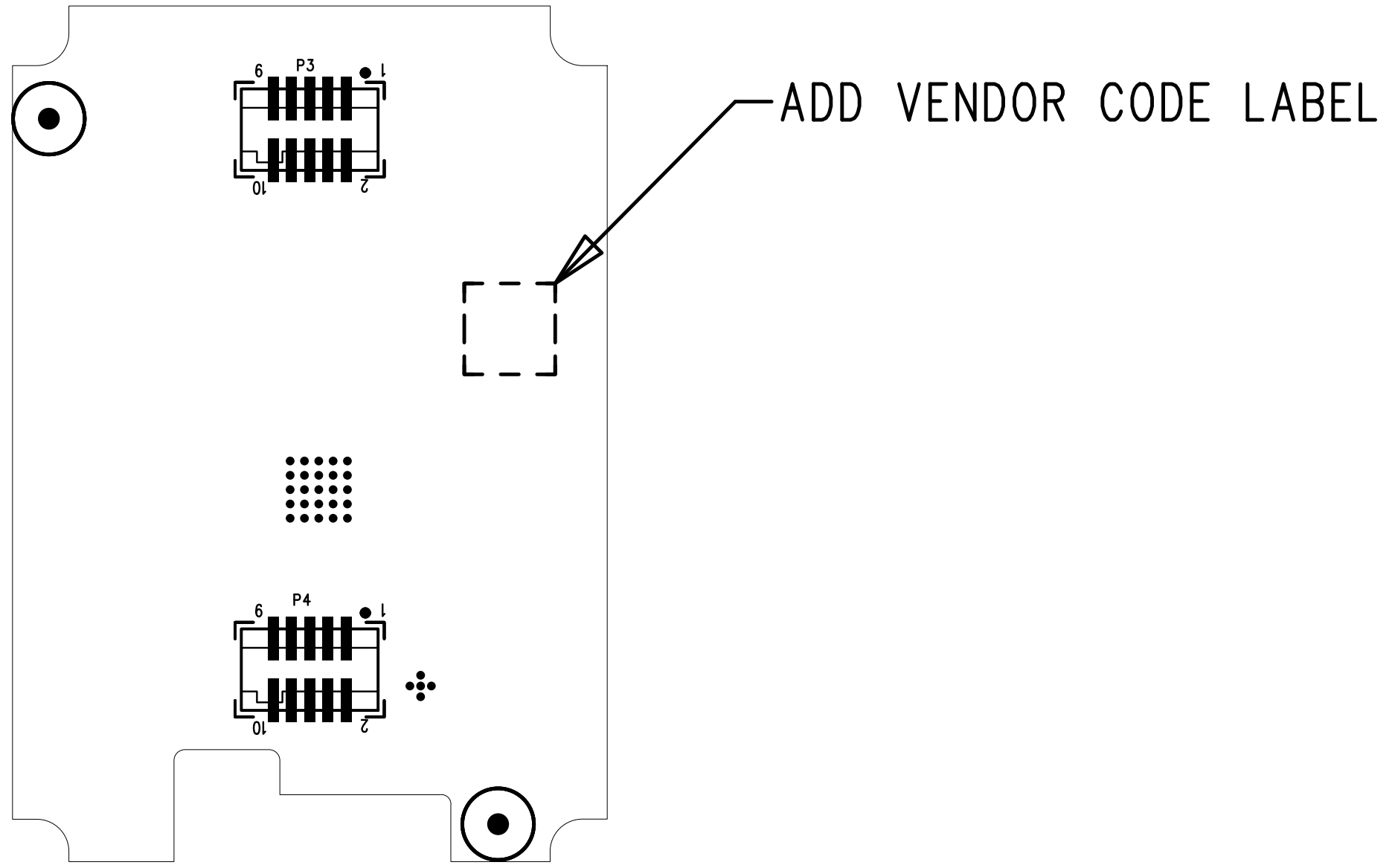


CRESTRON ELECTRONICS-PB07807-A  
COMPONENT SIDE VIEW  
ASSEMBLY TOP SIDE



- NOTES:** (UNLESS OTHERWISE SPECIFIED)
- MANUFACTURE:** THE MANUFACTURE, ACCEPTANCE AND EVALUATION OF THE PRINTED CIRCUIT BOARD ASSEMBLY WILL BE IN ACCORDANCE WITH THE LATEST REVISIONS OF IPC-A-610 FOR CLASS 2 ASSEMBLIES (WHEN APPLICABLE).
  - CONDUCTOR SPECS:** MINIMUM CONDUCTOR WIDTH: .005  
MINIMUM CONDUCTOR SPACING: .006  
MINIMUM LEAD PITCH: .020
  - SOLDERING :** ALL VIAS TO BE FREE OF SOLDER.

CLW-SERIES		PA07807-1			
FINISHED GOODS	SORT NAME	ASSEMBLY PART NO/VERSION	DESCRIPTION		
USED ON					
UNLESS OTHERWISE SPECIFIED: ALL DIMENSIONS ARE IN INCHES TOLERANCES ARE: FRACTIONS ± 1/64      ANGLES ± 1/2° DECIMALS .X ± .1    .XX ± .01    .XXX ± .005 REMOVE ALL BURRS BREAK SHARP EDGES .010R MAX		<b>CRESTRON</b> Electronics Inc		22 LINK DRIVE, ROCKLEIGH, N.J. 07647 (201) 767-3400 FAX (201) 767-7576	
DO NOT SCALE DRAWING		NAME	DATE	ASSEMBLY DRAWING PCB, CLW BUTTON/LED INFINET EX INTERFACE - EFR32	
		DRAWN BY	L.M. 07/22/19		
SETUP FOR "ATE"		CHECKED		SIZE	DRAWING NO. <b>AD07807</b>
		ENGR APPVL	T.G. 07/22/19		
		MFG APPVL			REV A
SCALE: FULL				FILENAME: 07807AAA.PCB	SHEET 1 OF 1



CRESTRON ELECTRONICS-PB07807-A  
COMPONENT SIDE VIEW  
ASSEMBLY BOTTOM SIDE