

Crestron Electronics, Inc.

CHV-TSTATRF

FCC ID#: EROCWD1013

Photo One – Internal
Open for Inspection-PCB Component Side

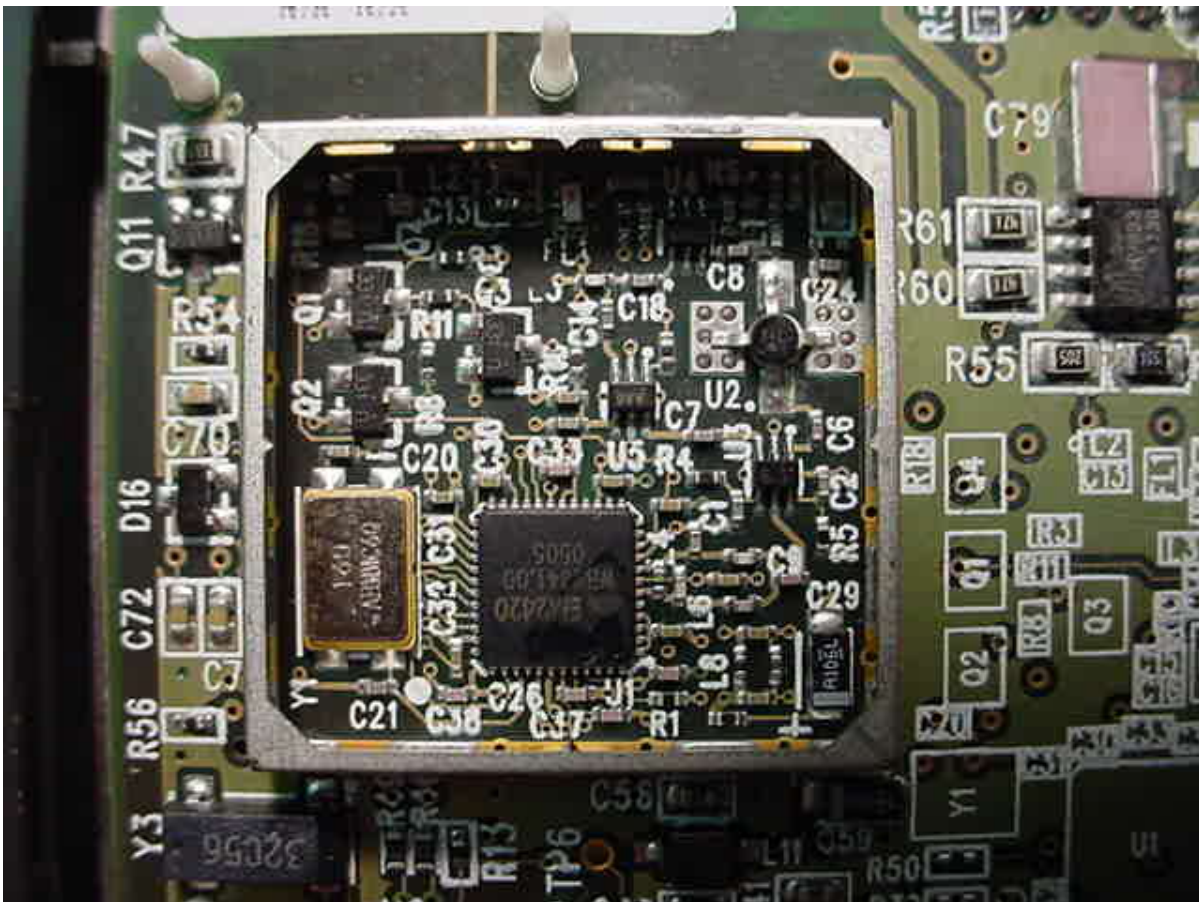


Crestron Electronics, Inc.

CHV-TSTATRF

FCC ID#: EROCWD1013

Photo Two – Internal
Close Up of RF Section – Shield Removed

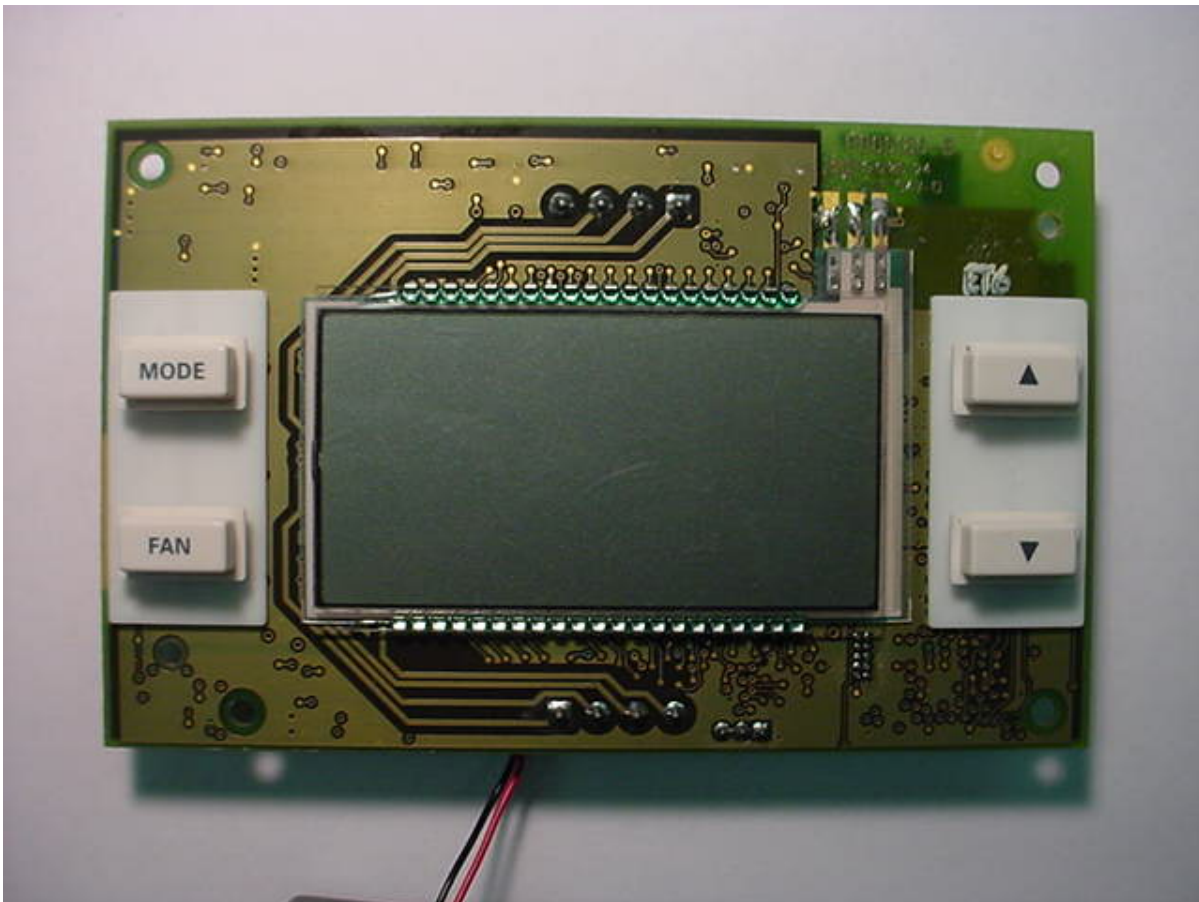


Crestron Electronics, Inc.

CHV-TSTATRF

FCC ID#: EROCWD1013

**Photo Three – Internal
PCB Display Flip Side & Controls**



Crestron Electronics, Inc.

CHV-TSTATRF

FCC ID#: EROCWD1013

Photo Four – Internal
Chip Antenna – Close Up

