



Internal & External Photos

EUT Name: Timex OmniMOVE Wrist Watch

EUT Model: M328A

FCC ID: EP9-TMXM328A

IC ID: 3348A-TMXM328A

FCC Title 47, Part 15C, RSS-210 Issue 9, ANSI C63.10:2013

Prepared for:

Sam Everett
Timex Group USA Inc
555 Christian Rd
Middlebury CT 06787 USA
Tel: 203-346-5603
Fax: 203-346-7163

Prepared by:

TUV Rheinland of North America
762 Park Avenue
Youngsville, NC 27596
Tel: (919) 554-3668
Fax: (919) 554-3542
<http://www.tuv.com/>

Report/Issue Date: 19 July 2017

Report Number: Supplement to 31761853.001 - Internal & External Photos

Internal and External Photos:

Note: This application is for a Limited Modular Device to be used on various watch models. As such, these photos show the installation of the LMD circuit on a typical watch PCB.

1 Photos of Modular device on M238A

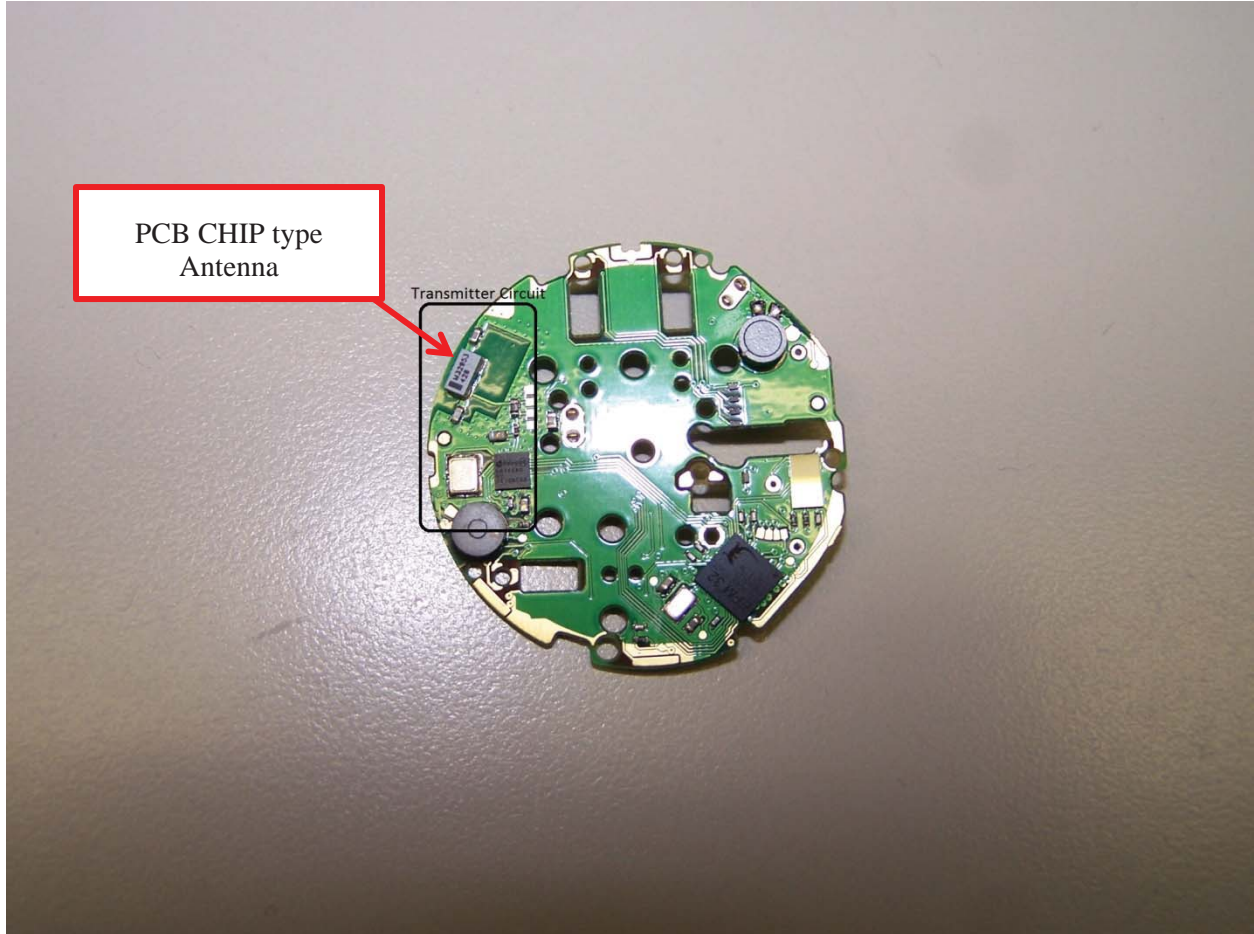


Figure 1: Dial Side View of PCB showing the BLE antenna with the Limited Modular transmitter section shown on a typical watch circuit board.

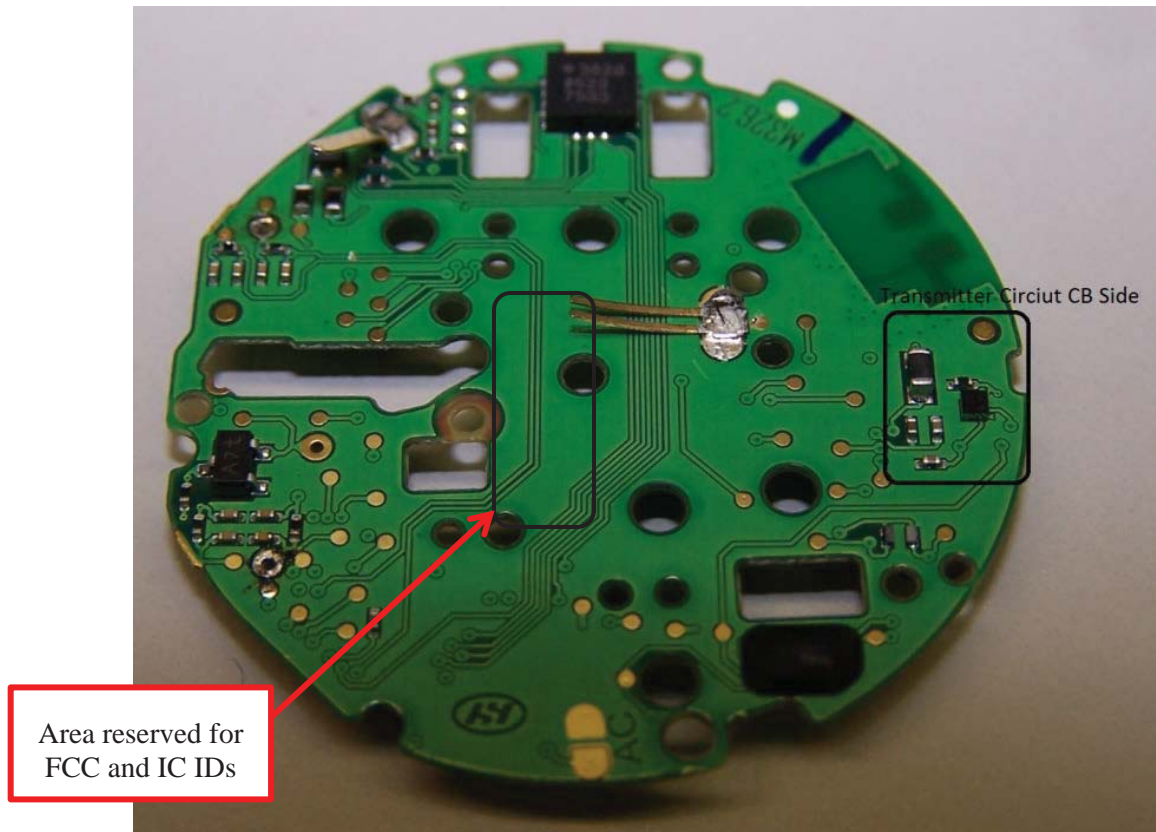


Figure 2: Case-Back View of PCB with the Limited Modular transmitter section shown on a typical watch circuit board.