

iConnect Rectangle



Please read the manual before use.

- ◆ The information in this document won't be modified or extended in accordance with any notice.
- ◆ The watch should be charging 1.5 hours at least before use.

1. Product specification

- ◆ Model:M03Y
- ◆ CPU MTK2502D ARM7 260MHz
- ◆ Memory:RAM 32Mb+ ROM 32Mb,
- ◆ Capacitive touch screen 1.54" 240*240 pixel
- ◆ Bluetooth version 4.0
- ◆ Function: Heart Rate, BT Call , BT SMS,

Anti-lost,Alarm,Pedometer,Sleep monitor,Sedentary reminder,Information notification (G-mail, Facebook, and so on)

- ◆ Battery Lithium-ion 3.7V 230mAh

2.Product details:

2.1 Product details



POWER

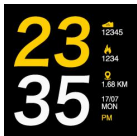
Power Key: Power On/Off; Awaken/turn off screen; Back to main menu

Touch screen: Each function (main menu) will be shown and displayed on capacitive touch screen.

2.2 Products quick into

You can enter into next page by sliding screen left, and return to last page by sliding screen right; enter into the sub-menu after clicking selected menu, and return to upper menu after sliding from left to right. It is will be in mistake for a click if the drag distance too short.

2.3 Clock Display



Setting method:

Method 1: Power on, when the phone is in clock mode, please long press middle screen and set different clock interfaces if you like.

Method 2: Power on, Main menu: settings—clock—clock type, choose the clock mode if you like.

3. Product quick use

3.1 Download and install

You have to download and install the " HitFit " App from APP Store or Google

Play Store: 

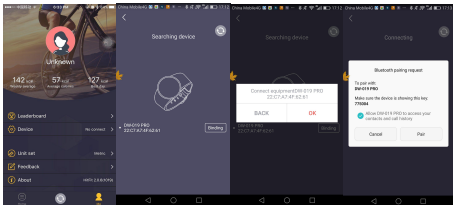
3.2 Connection and Synchronize data

3.2.1 Bluetooth connection

3.2.1.1 For Android:

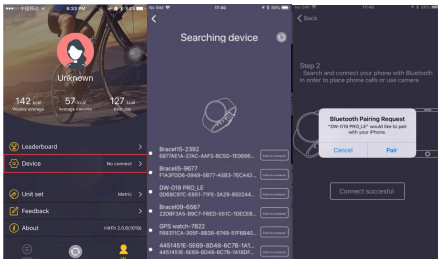
Open HitFit -- Click "Me" in bottom -- "Add device" --Searching Device.

Click OK and Click Pair to binding watch as below.

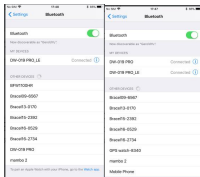



3.2.1.2 For IOS:

Connect step 1: Open "HitFit" app, "Add device" on "Me" screen to search Bluetooth devices nearby, find watch name DW-019 pro and paired it in app, one DW-019pro connected will show in the phone's Bluetooth menu screen as below pictures.



Connect step 2: Open the Bluetooth, in Bluetooth menu screen, find watch name DW-019pro and pair it, now the Bluetooth menu interface displays two DW-019pro are connected successfully as below picture 2 and 3:




After connected successfully, the blue green double color icon  will show on smart watch.

Notice:

The Sync software can open in sync APP already installed and Accessibility, the mobile will show Bluetooth connected done after 2-5min;the watch will inform you the time of Sync with phone, than the Sync switched on. The message will sync to you watch when it incoming to mobile .

3.2.2 Synchronizing data

When you are all done, press "Stop" then go to your Smart phone and open the " HitFit " App. Press '  ' to sync data. Your data will show on App .



Notice:

Please don't shut the Bluetooth notify service when you are clearing software by background or close background application software. It will affect the sync function between watch and phone if shut it.

3.3 Base function

3.3.1 Message

Sync phone message.

(Notice: iPhone does not support the message synchronization)

3.3.2 Call logs

You can check your phone call records after you connect with the Bluetooth.

Shown all records including miss call,dialed calls and receive call;You can check the date,time and phone number of the miss call after you choose it,but only can call this number.

3.3.3 Heart rate

Wear the watch on, click the heart rate testing interface,during the test the heart rate light will flashing,the data will show on after 15-60 seconds.

3.3.4 BT

Paired devices from smart watch

3.3.5 Remote notifier

When there is SMS, incoming messages from Skype and other applications on the connected phone, the watch phone will alert you to read them.

3.3.6 Remote cameras

Use phone camera take photos, but remote by watch, it's need switch on the camera of phone in advance.

3.3.7 Find my device

Watch seek phone .

3.3.8 Pedometer

It can be adopted as a tool to avoid insufficient or excessive exercise by measuring calories or calories consumption based on collected data, such as steps, distance, time, etc., to control exercise.

3.3.9 Sleep monitor

Show your sleep quality base on your sleep times.

3.3.10 Sedentary remind

You can set a time to remind you up to do exercise, we suggest you the time could be one hours.

3.3.11 Music

After connected with the Bluetooth,you can manipulate Mobile to playing music and adjust the volume, voice will come out from mobile phone.

3.3.12 Multi-sports

Multi-sports :Running, Hiking, Biking, Basketball, Pingpong, Football

4. Notice

4.1 Full charge before use, the charge time need 1.5 hours.

4.2 Use the accessories cable and charger, or your android phone accessories .

4.3 Bluetooth will disconnect when exceed the distances, after switch on the Find my device, the smart search function can't be use before reconnect with Bluetooth.

4.4 Please reconnect with BT if it's disconnected occasionally (please Manual connect if the Bluetooth disconnect over 5 minutes) .Please agree the

phone book Sync otherwise there is no called phone book.

4.5 When playing the music,some of music's name can shown and some can't, it is normal, because android phone are difference.

5. Common trouble shooting

Please refer below key function for any problems with the watch,if the problem is still unsolved,please contact with our dealer or serviceman appointed.

5.1 Unable to switch on

The time of press the power button too short,please keep it more than 3 seconds.

Low power,please charge it.

5.2 Shut down automatically

Low power, please charge the watch

5.3 Using time too short.

Battery is not full,please make sure it is full power(full charge need 1.5 hours at least).

During Heart-rate monitor,the power will go off soon if the Heart-rate monitoring 24 hours.

5.4 Unable to charge.

The battery's life will be reduce after few years,please check if the battery are work.

Change a new charger if it is unworkable.

Please check the USB slot connecting good,if no,please try again.

5.5 No caller's name when incoming call

Forgot to choose upload the phone book when connected with BT,or unselected keep upload the phone book.

Forgot to sync the phone book when reconnected,please pair the device and connect BT again.

5.6 Bad phone call voice.

Watch and phone are separated too far,please be more close ;Bad signal of BT.

FCC Statement

This equipment has been tested and found to comply with the limits for a Class B digital device, pursuant to part 15 of the FCC Rules. These limits are designed to provide reasonable protection against harmful interference in a residential installation. This equipment generates, uses and can radiate radio frequency energy and, if not installed and used in accordance with the instructions, may cause harmful interference to radio communications. However, there is no guarantee that interference will not occur in a particular installation. If this equipment does cause harmful interference to radio or television reception, which can be determined by turning the equipment off and on, the user is encouraged to try to correct the interference by one or more of the following measures:

- Reorient or relocate the receiving antenna.
- Increase the separation between the equipment and receiver.
- Connect the equipment into an outlet on a circuit different from that to which the receiver is connected.
- Consult the dealer or an experienced radio/TV technician for help.

Caution: Any changes or modifications to this device not explicitly approved by manufacturer could void your authority to operate this equipment.

This device complies with part 15 of the FCC Rules. Operation is subject to the following two conditions: (1) This device may not cause harmful interference, and (2) this device must accept any interference received, including interference that may cause undesired operation.

RF Exposure Information

The device has been evaluated to meet general RF exposure requirement. The device can be used in portable exposure condition without restriction.

ISED Statement

- English: This device complies with Industry Canada license-exempt RSS standard(s). Operation is subject to the following two conditions: (1) This device may not cause interference, and (2) This device must accept any interference, including interference that may cause undesired operation of the device.

The digital apparatus complies with Canadian CAN ICES-3 (B)/NMB-3(B).

- French: Le présent appareil est conforme aux CNR d'Industrie Canada applicables aux appareils radio exempts de licence. L'exploitation est autorisée aux deux conditions suivantes: (1) l'appareil ne doit pas produire de brouillage, et (2) l'utilisateur de l'appareil doit accepter tout brouillage radioélectrique subi, même si le brouillage est susceptible d'en compromettre le fonctionnement.

l'appareil numérique du CIEM conforme canadien peut - 3 (b) / nmb - 3 (b).

This device meets the exemption from the routine evaluation limits in section 2.5 of RSS 102 and compliance with RSS 102 RF exposure, users can obtain Canadian information on RF exposure and compliance.

cet appareil est conforme à l'exemption des limites d'évaluation courante dans la section 2.5 du CNR - 102 et conformité avec RSS 102 de l'exposition aux RF, les utilisateurs peuvent obtenir des données canadiennes sur l'exposition aux champs RF et la conformité.

RF Exposure Statement

The device has been evaluated to meet general RF exposure requirement. The device can be used in portable exposure condition without restriction.

L'appareil a été évalué pour répondre aux exigences générales d'exposition aux radiofréquences. L'appareil peut être utilisé en condition d'exposition portable sans restriction.