



6600 Washington Avenue  
Eden Prairie, MN 55344

Date: 10.20.2010

### Antenna Info

This file must contain the following information:

- a) Describe compliance of the device with the antenna requirements of paragraph 15.203 of the FCC rules (see attachment)

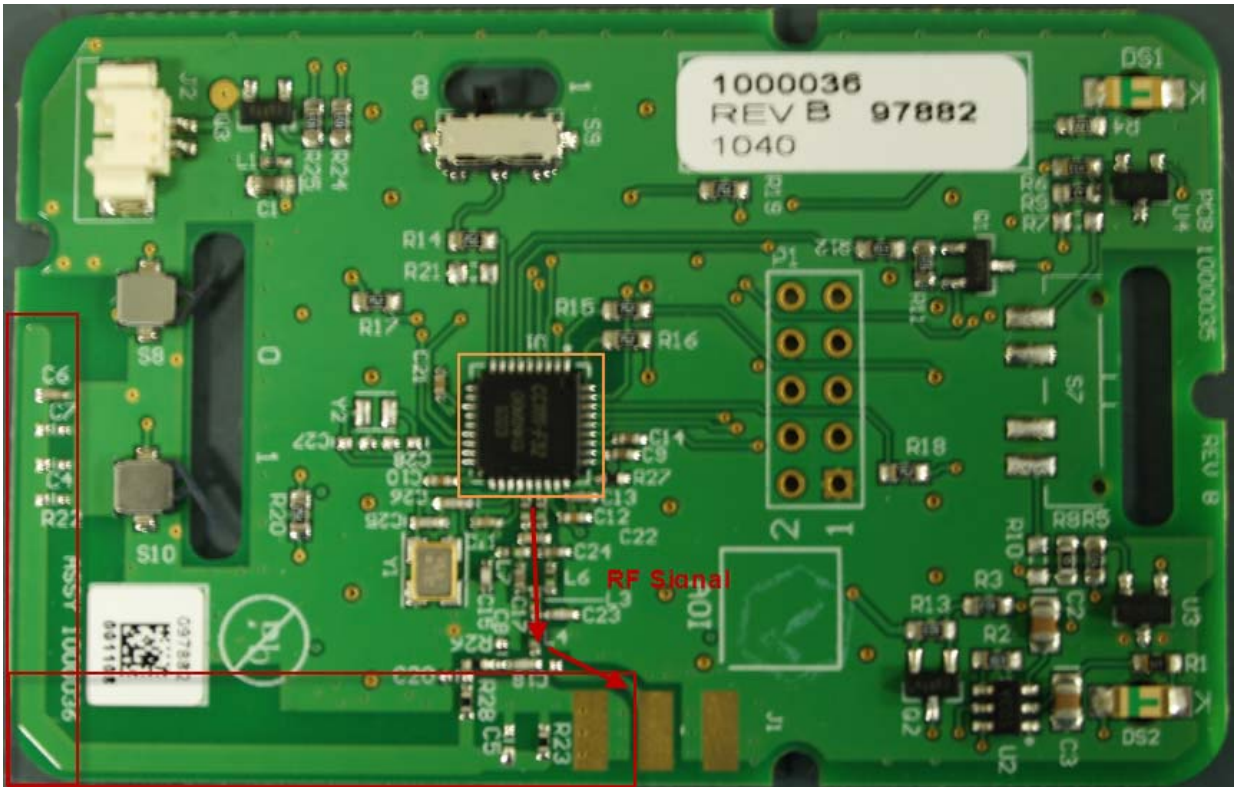
**The Remote is in compliance as the antenna is not detachable or replaceable, it is an integral part of the Printed Circuit Board Assembly itself.**

- b) A list of antennas to be used with the transmitter. Include manufacturer, model number, gain (dBi), and description (e.g. dipole, yagi, patch, etc.)

**Only one, the antenna that is an integral part of the Printed Circuit Board itself. Max Gain 2 dBi**

- c) Drawing or photograph unless clear photos appear in the external photos exhibit

**Picture with explanation is on the next page.**



Radio IC shown inside orange box; RF signal path shown with red arrows; Antenna inside red boxes.