



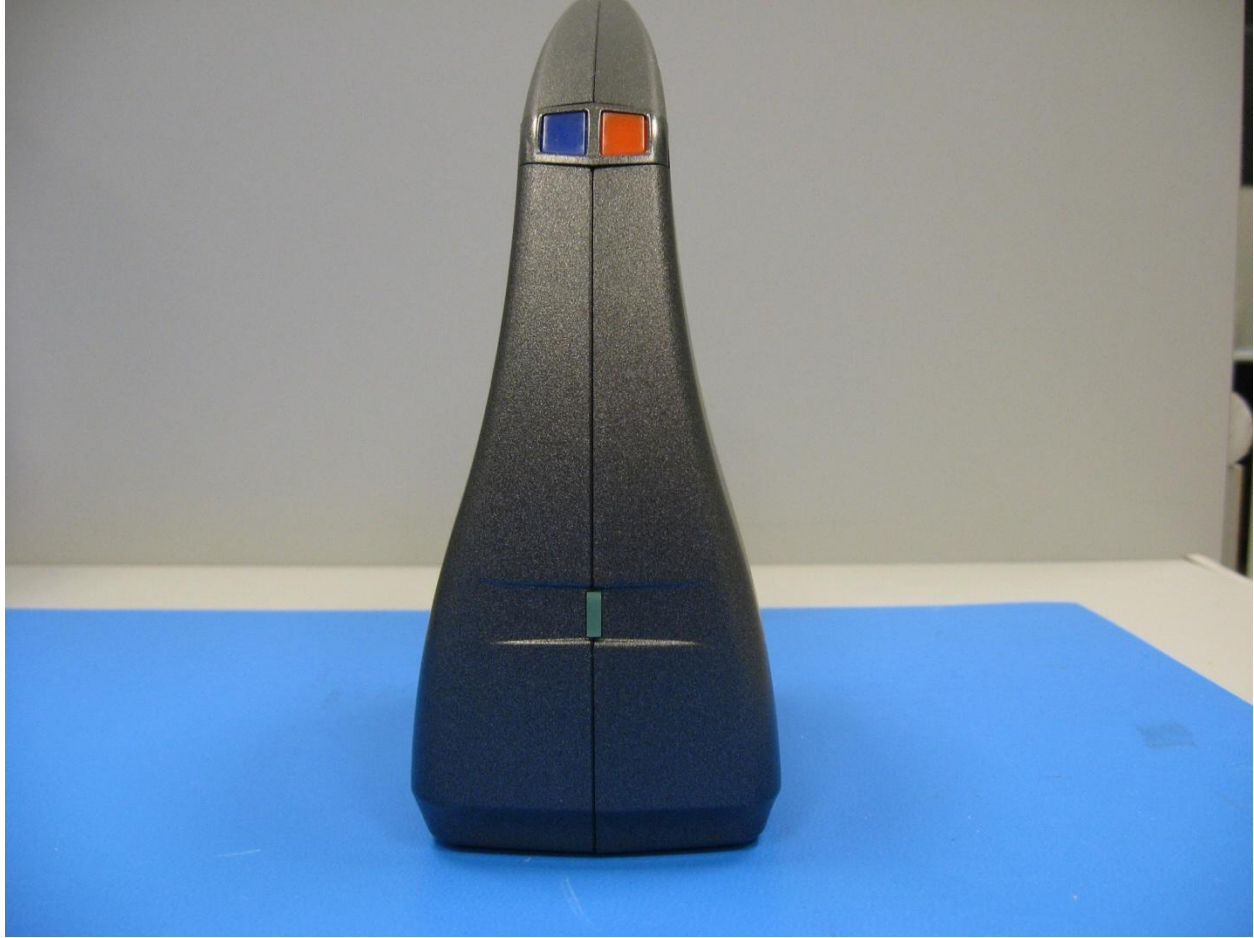
SurfLink Programmer bottom view showing label location



SurfLink Programmer external left side view



SurfLink Programmer external right side view



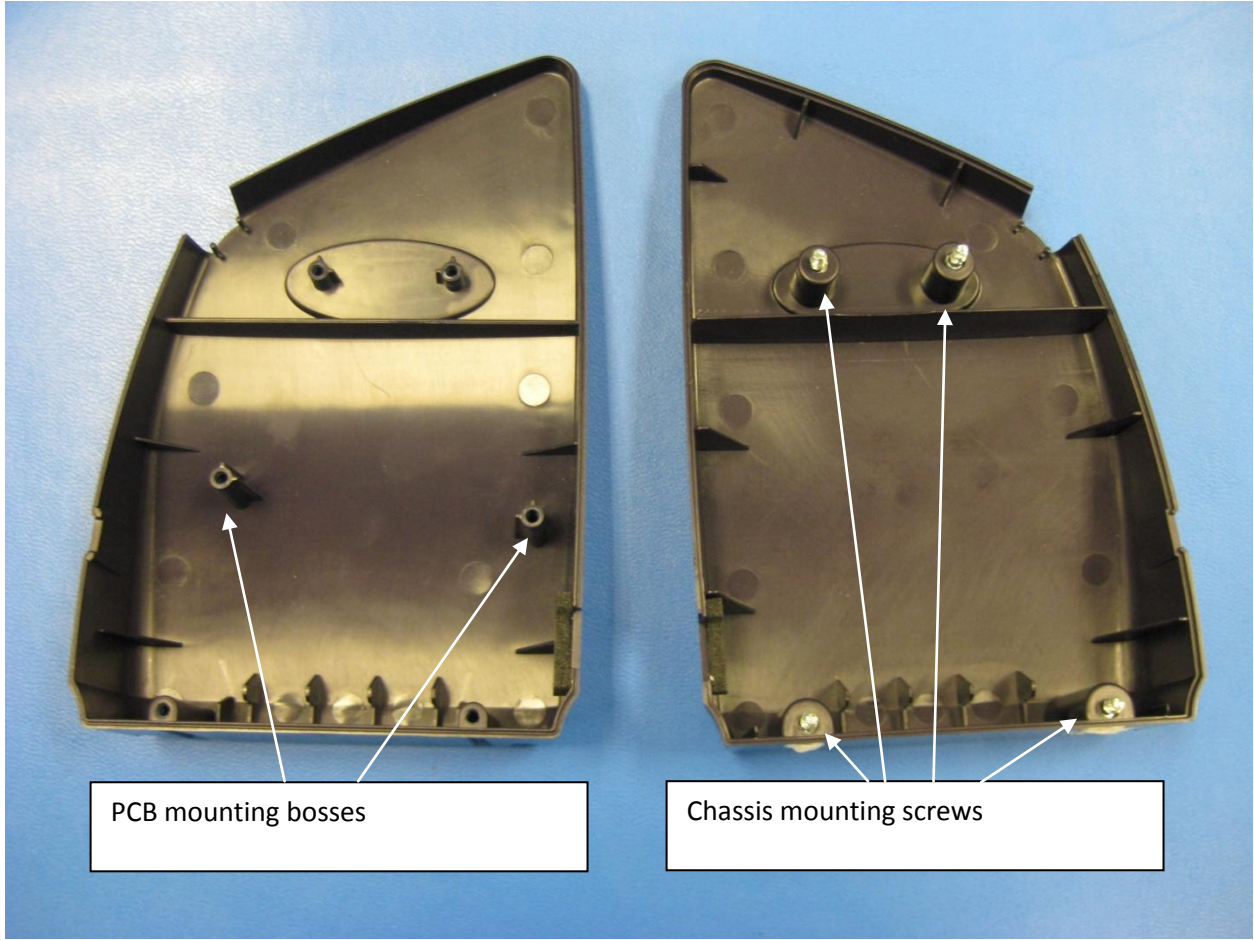
SurfLink Programmer front view with LEDs



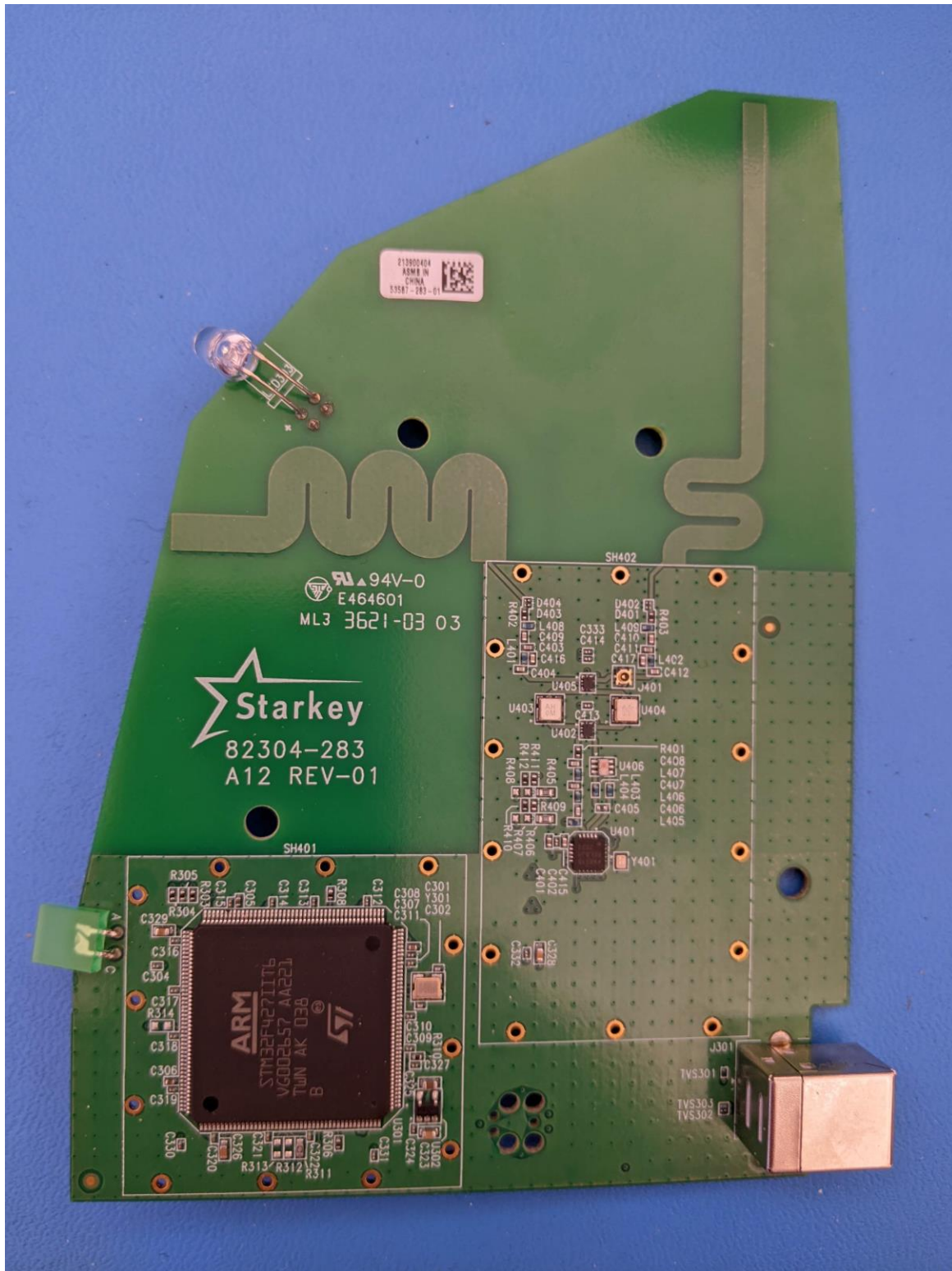
SurfLink Programmer rear view showing USB connector



SurfLink Programmer external top view

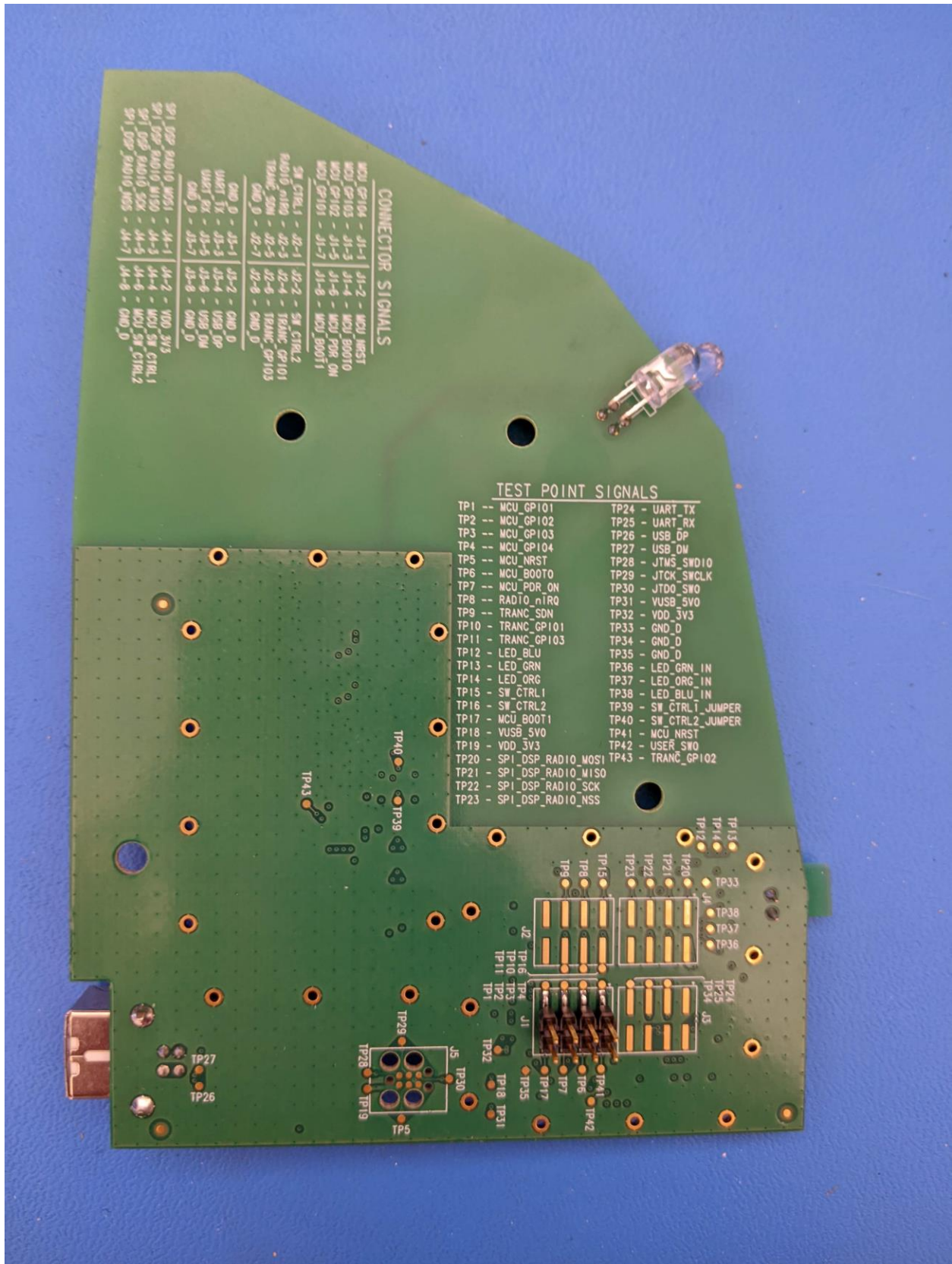


SurfLink Programmer Chassis showing chassis screws and PCB mounting bosses



SurfLink Programmer 2 PCB front, showing antenna

SI 4461 radio is small square IC on lower right side of board. Note that there are no shields in product.



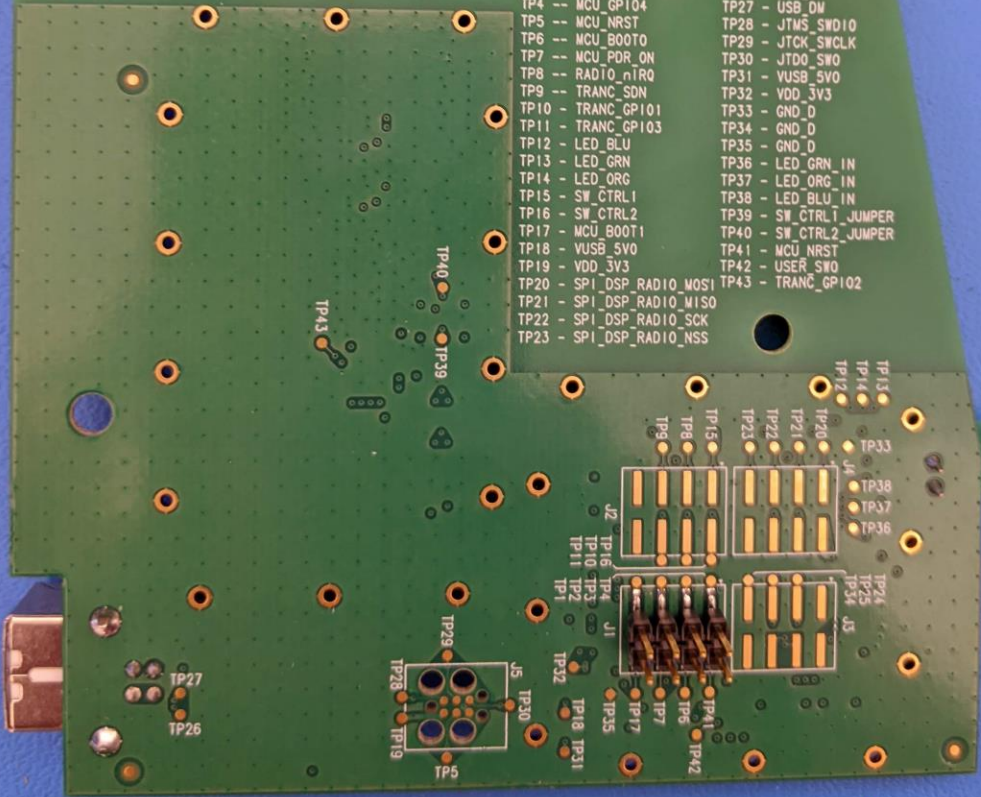
SP1_DSP_RADIO_MOSI - J4-1 - J4-2 - VDD_3V3
 SP1_DSP_RADIO_MISO - J4-3 - J4-4 - MCU_SW_CTRL1
 SP1_DSP_RADIO_SCK - J4-5 - J4-6 - MCU_SW_CTRL2
 SP1_DSP_RADIO_NSS - J4-7 - J4-8 - GND_D

CONNECTOR SIGNALS

MCU_GP104	- J1-1	J1-2	- MCU_NRST
MCU_GP105	- J1-3	J1-4	- MCU_BOOT0
MCU_GP102	- J1-5	J1-6	- MCU_PDR_ON
MCU_GP101	- J1-7	J1-8	- MCU_BOOT1
SW_CTRL1	- J2-1	J2-2	- SW_CTRL2
RADIO_MISO	- J2-3	J2-4	- TRANC_GP101
TRANC_SDN	- J2-5	J2-6	- TRANC_GP103
GND_D	- J2-7	J2-8	- GND_D
GND_D	- J3-1	J3-2	- GND_D
UART_RX	- J3-3	J3-4	- VUSB_SVO
UART_TX	- J3-5	J3-6	- VUSB_SVO
GND_D	- J3-7	J3-8	- GND_D

TEST POINT SIGNALS

TP1	-- MCU_GP101	TP24	- UART_TX
TP2	-- MCU_GP102	TP25	- UART_RX
TP3	-- MCU_GP103	TP26	- USB_DP
TP4	-- MCU_GP104	TP27	- USB_DM
TP5	-- MCU_NRST	TP28	- JTAG_SWDIO
TP6	-- MCU_BOOT0	TP29	- JTAG_SWCLK
TP7	-- MCU_PDR_ON	TP30	- JTDO_SWO
TP8	-- RADIO_nIRQ	TP31	- VUSB_SVO
TP9	-- TRANC_SDN	TP32	- VDD_3V3
TP10	- TRANC_GP101	TP33	- GND_D
TP11	- TRANC_GP103	TP34	- GND_D
TP12	- LED_BLU	TP35	- GND_D
TP13	- LED_GRN	TP36	- LED_GRN_IN
TP14	- LED_ORG	TP37	- LED_ORG_IN
TP15	- SW_CTRL1	TP38	- LED_BLU_IN
TP16	- SW_CTRL2	TP39	- SW_CTRL1_JUMPER
TP17	- MCU_BOOT1	TP40	- SW_CTRL2_JUMPER
TP18	- VUSB_SVO	TP41	- MCU_NRST
TP19	- VDD_3V3	TP42	- USER_SWO
TP20	- SPI_DSP_RADIO_MOSI	TP43	- TRANC_GP102
TP21	- SPI_DSP_RADIO_MISO		
TP22	- SPI_DSP_RADIO_SCK		
TP23	- SPI_DSP_RADIO_NSS		



SurfLink Programmer 2 PCB back