



6600 Washington Avenue
Eden Prairie, MN 55344

Date: 10.26.2010

Antenna Info

This file must contain the following information:

- a) Describe compliance of the device with the antenna requirements of paragraph 15.203 of the FCC rules (see attachment)

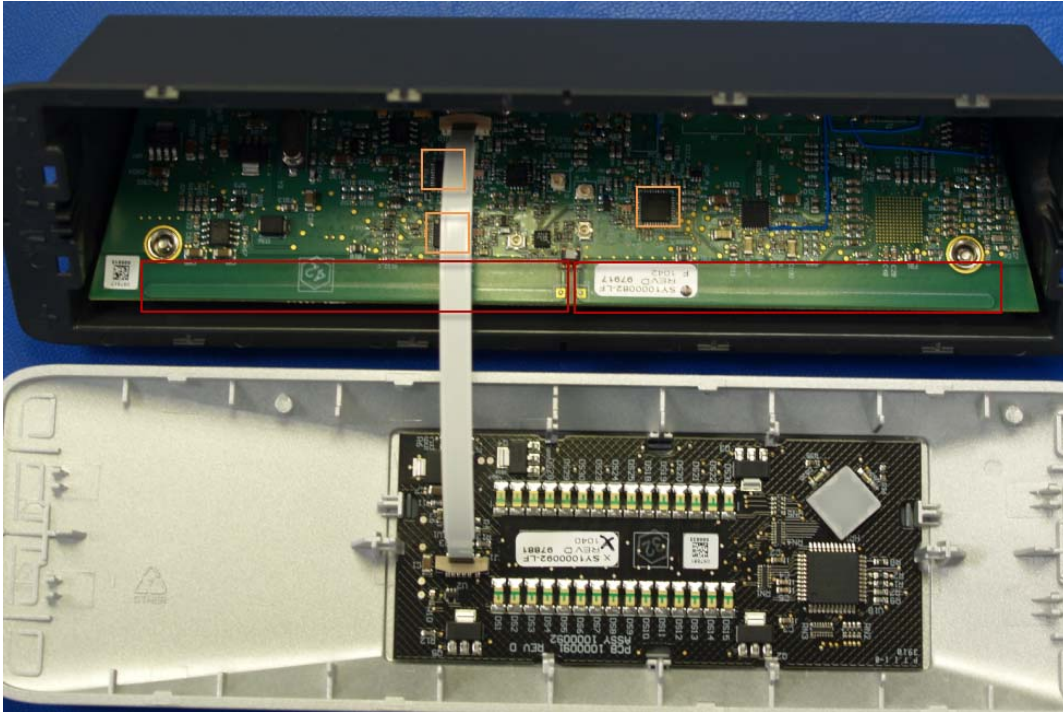
The Media Device i in compliance as the antenna is not detachable or replaceable, it is an integral part of the Printed Circuit Board Assembly itself.

- b) A list of antennas to be used with the transmitter. Include manufacturer, model number, gain (dBi), and description (e.g. dipole, yagi, patch, etc.)

Only one, the antenna that is an integral part of the Printed Circuit Board itself, +2dBi of gain.

- c) Drawing or photograph unless clear photos appear in the external photos exhibit

Picture with explanation is on the next page.



Radio IC shown inside orange box; RF signal path shown with red arrows; Antenna inside red boxes.