

Starlink Remote Control 2.0 internal photos

The construction of the remote control consists of 4 pieces, front to back:

1. Front cover, with push buttons, see Figures 3 and 4
2. Printed circuit (PC) board, see Figures 8 and 9
Figure 2 shows how PC board is placed inside front cover
3. Battery holder with regulatory label information, see Figure 1
Figure 1 shows items 1, 2, and 3 assembled into the remote, with battery installed
4. Back cover, which slides off so user can replace battery, see Figures 5 and 6

The user can remove the back cover to replace the battery, however the other 3 pieces cannot be disassembled without destroying the unit.



Figure 1 Battery Holder with Regulatory Label

Figure 1 shows items 1, 2, and 3 (above) assembled into the remote, with battery installed.



Figure 2 PC board placed in front case with cover removed

Figure 2 shows items 1 and 2 (above) after battery holder (Figure 1. Item 3) is removed



Figure 3 **Front of Case**



Figure 4 **Inside of Front of Case**



Figure 5 **Outside of Back Cover**

The back cover covers the assembly shown in Figure 1



Figure 6 **Inside of Back Cover**



Figure 7 **Front of Remote showing scale in inches**

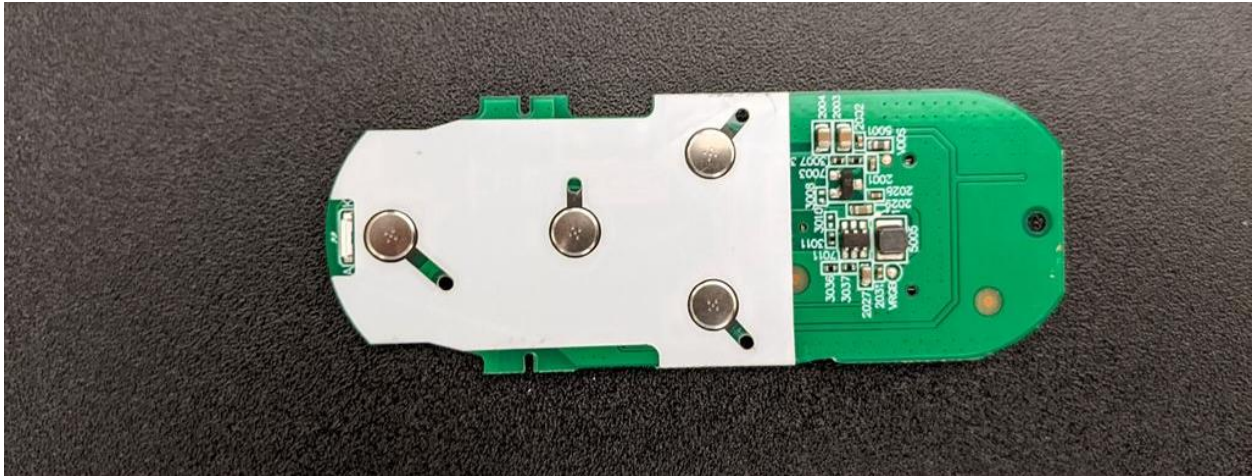


Figure 8 PC Board top side, showing push button pads



Figure 9 PC Board bottom side, showing battery contact, antenna in upper left corner of board, and antenna matching network