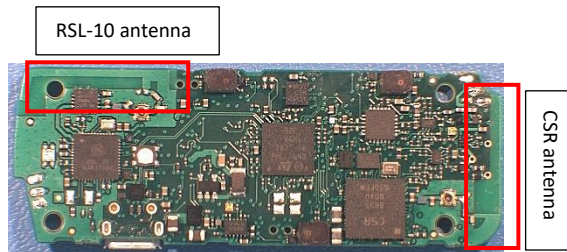


Starkey Hearing Technologies Remote Microphone+ Antenna Information

The Starkey Hearing Technologies Remote Microphone+ contains two 2.4 GHz inverted F antennas, one for the RSL-10 Bluetooth Low Energy radio and another for the CSR Classic Bluetooth radio. Both antennas are integral with the printed circuit board, as shown in the photo:

The RSL 10 (Bluetooth Low Energy) radio antenna gain is 0 dBi

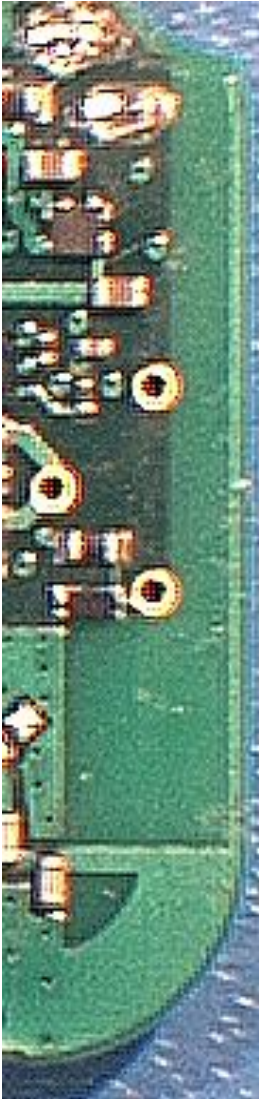
The CSR (Classic Bluetooth) radio antenna gain is -5 dBi.



RSL-10 antenna detail



CSR antenna detail



The following photo shows the scale

