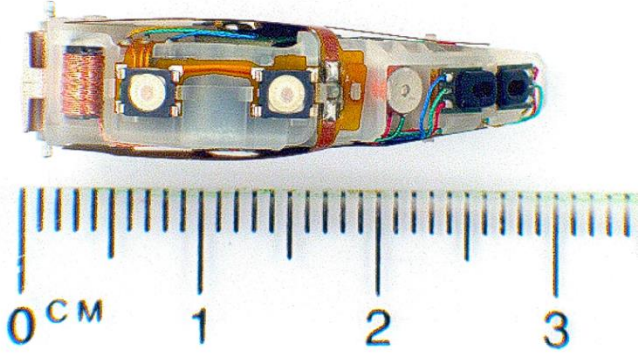
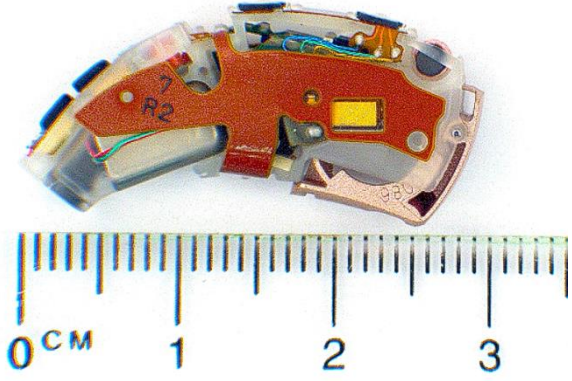
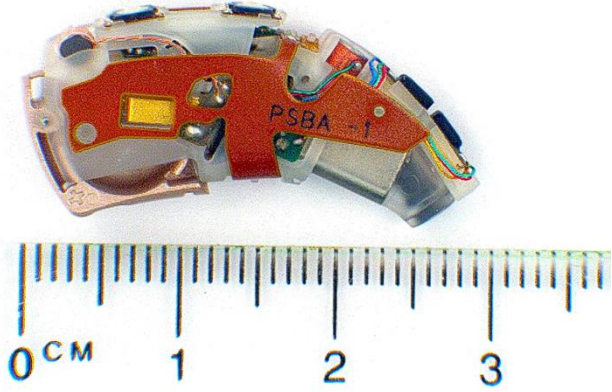
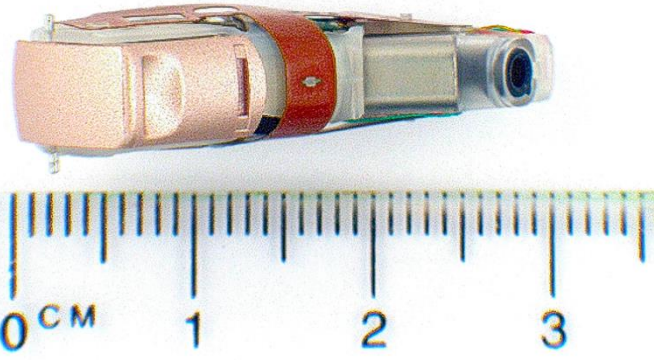
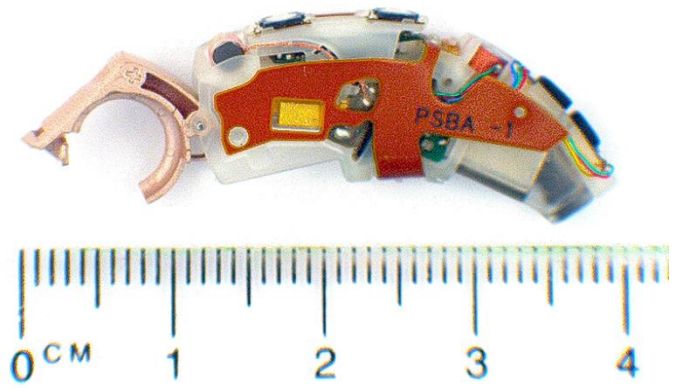


Internal photos	
Internal top	
Internal left side	
Internal right side	

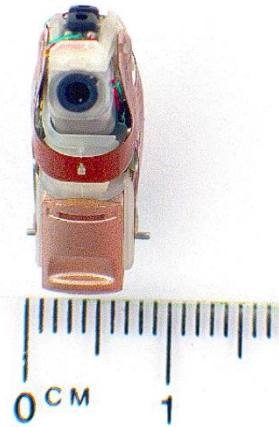
Internal bottom (battery door closed)



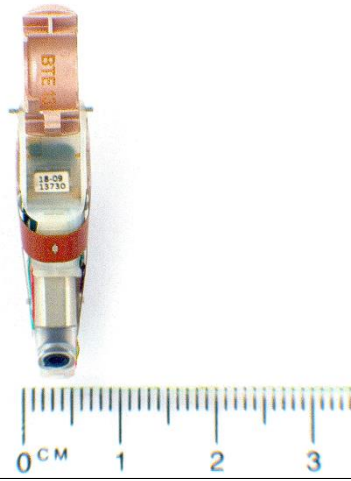
Internal bottom (battery door open)



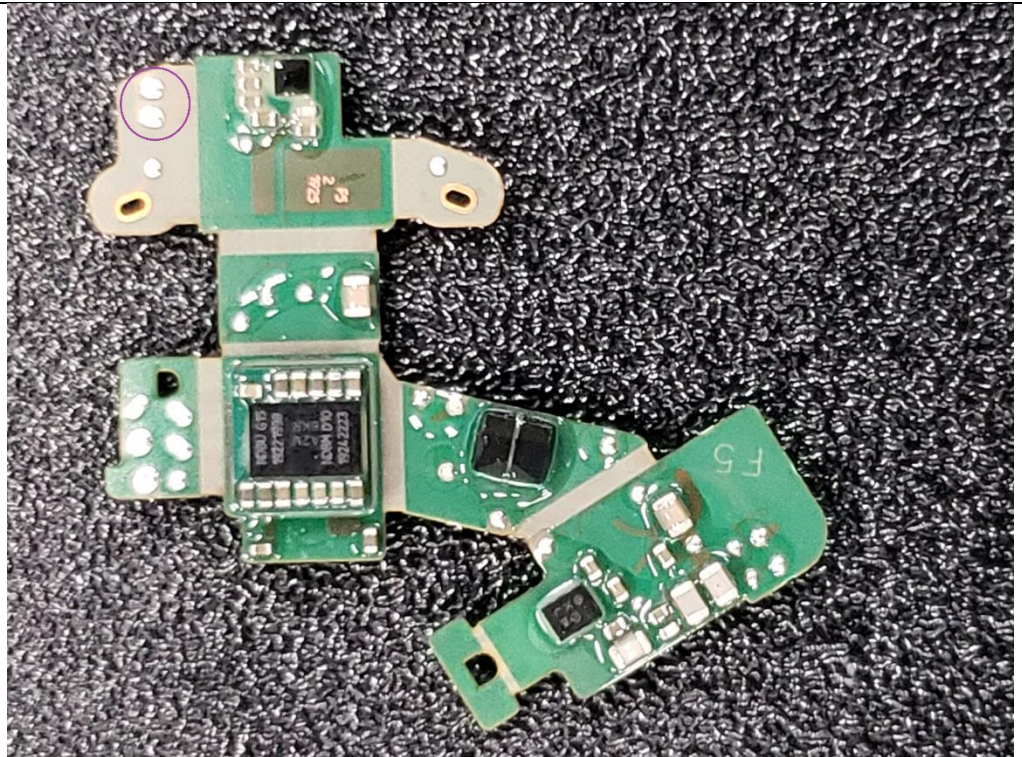
Internal receiver end



Internal battery end

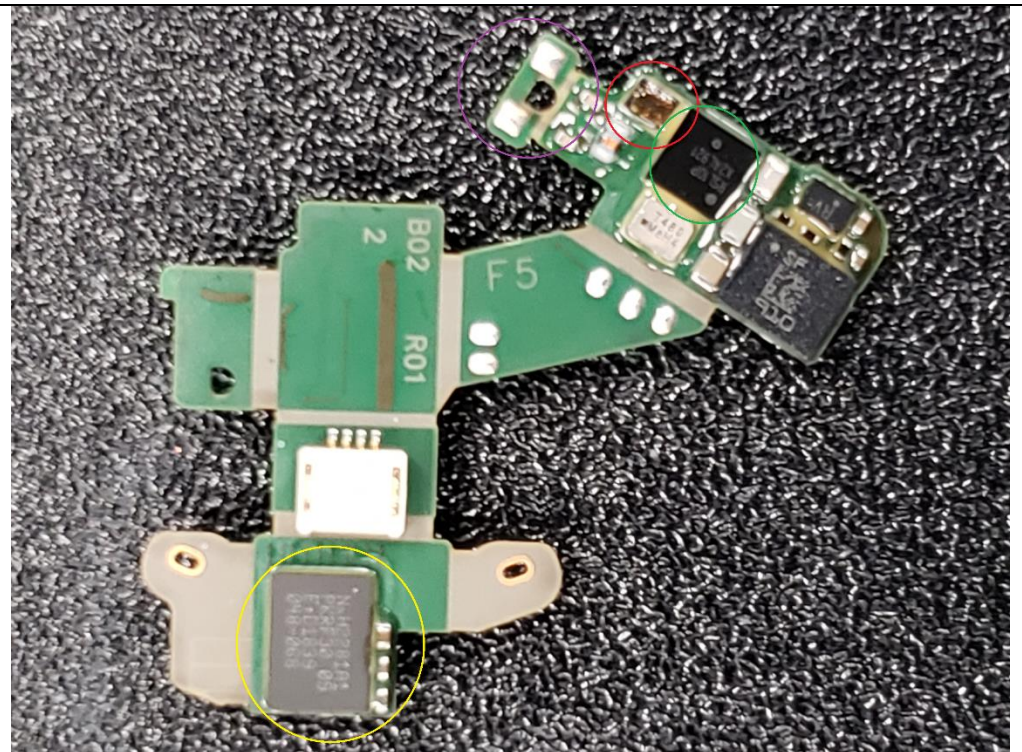


PCB front



NFMI antenna pads circled in purple

PCB back



RSL10 BLE radio circled in green, the BLE antenna pads circled in purple, and the NxH2281 NFMI radio circled in yellow