

Edge AI ITC Left Hearing Aid

The custom hearing aid is custom manufactured to the patient's ear canal. Whether the aid is called an ITE or ITC depends on the size of the patient's ear:

- ITE (In-the-ear) devices reside primarily in the bowl and past the 1st bend of the canal.
- ITC (In-the-canal) devices reside partially in the bowl and into the 2nd bend of the ear canal.

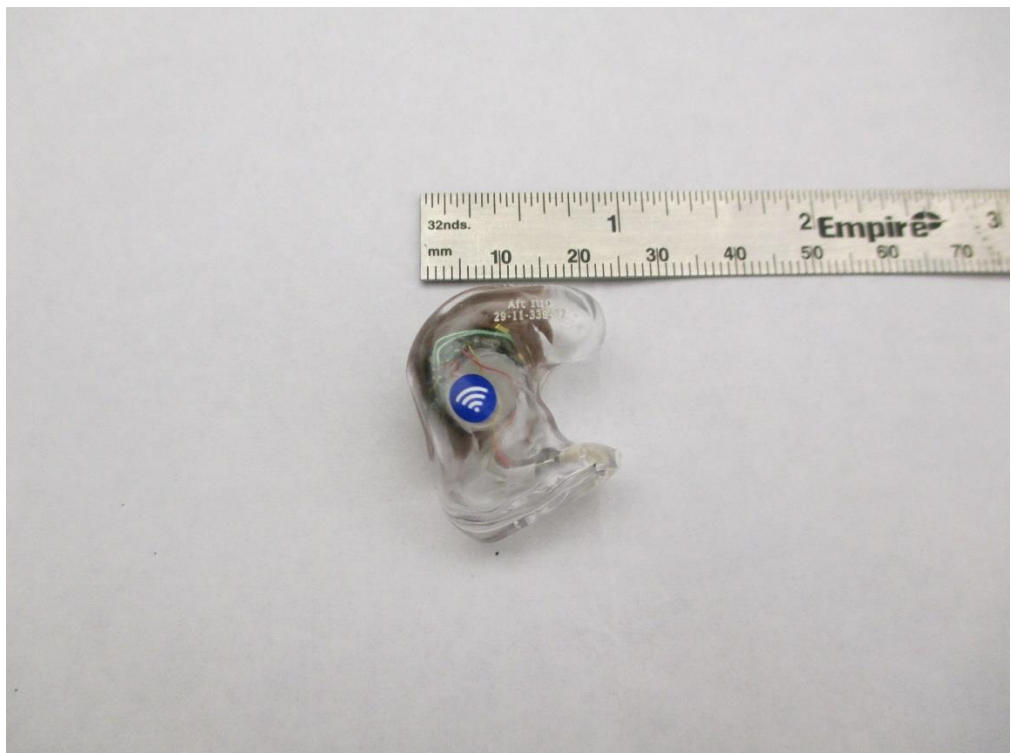
These photos show a generic shell that is used for regulatory submissions that is representative of either an ITE or ITC.

Internal photos

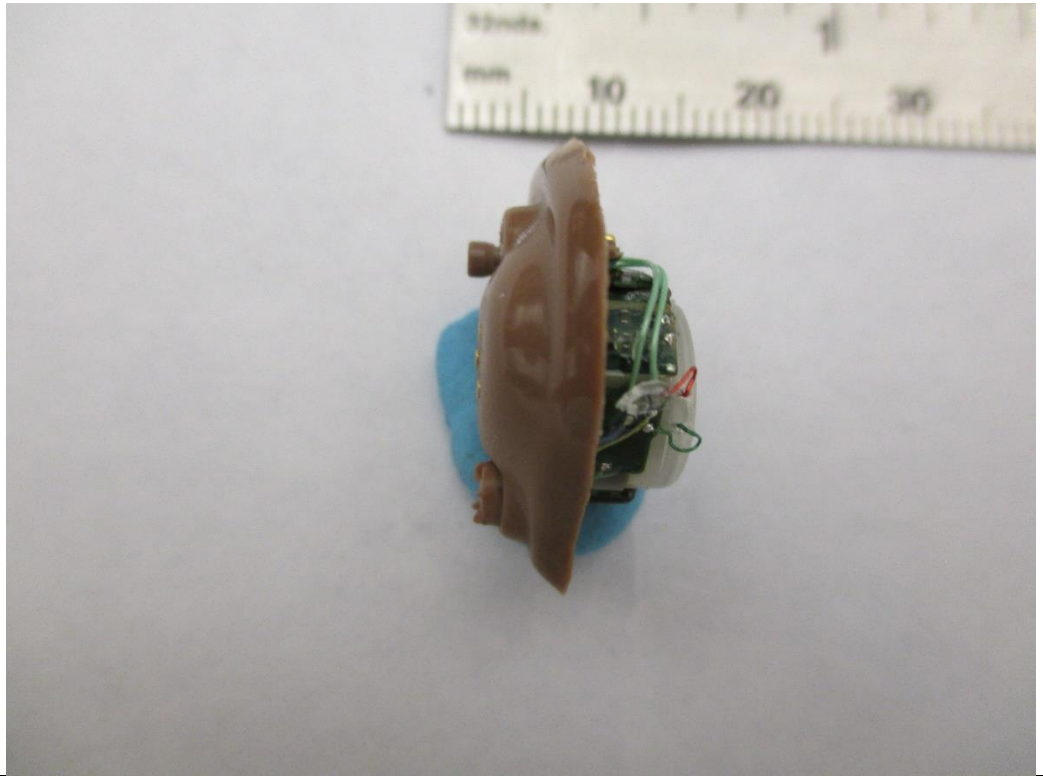
Faceplate bottom and shell



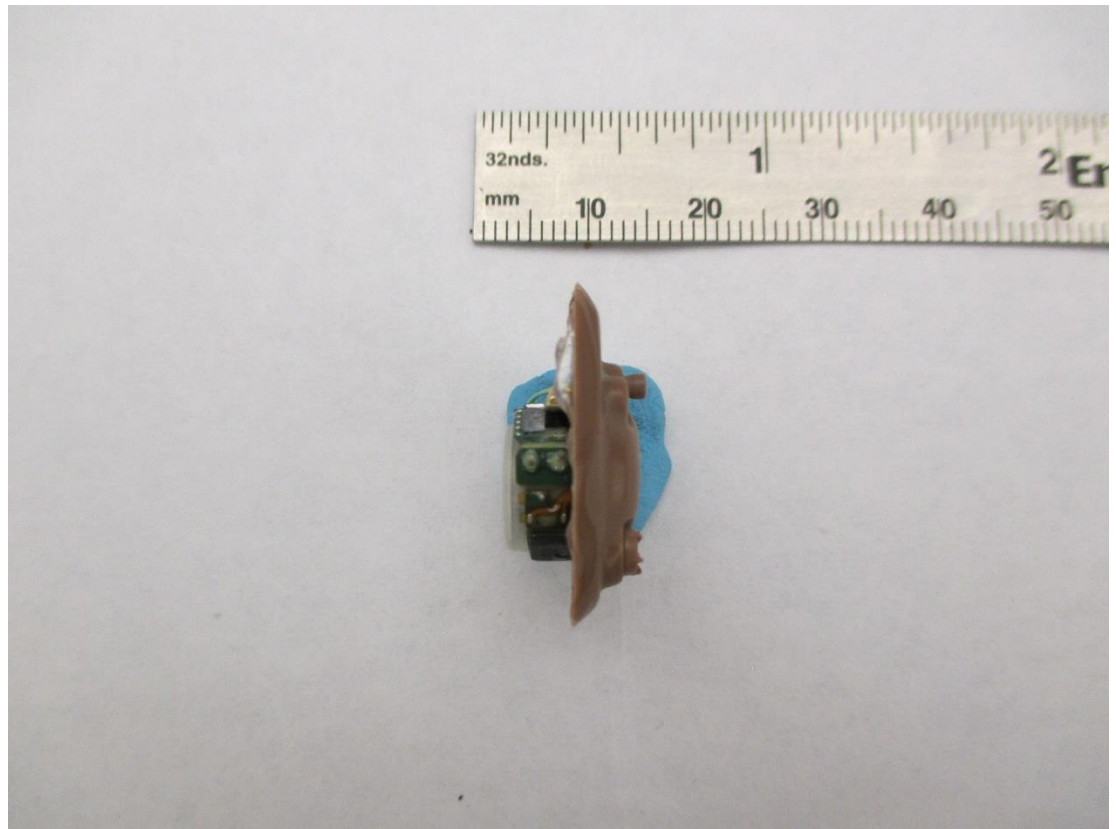
Shell side view



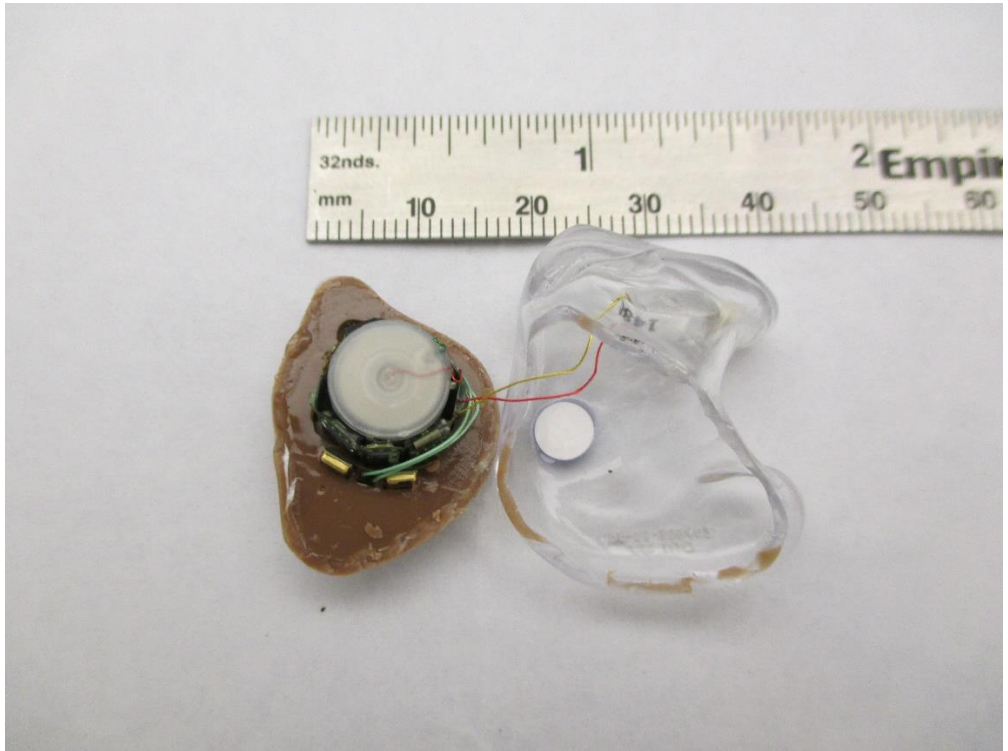
Faceplate side 1



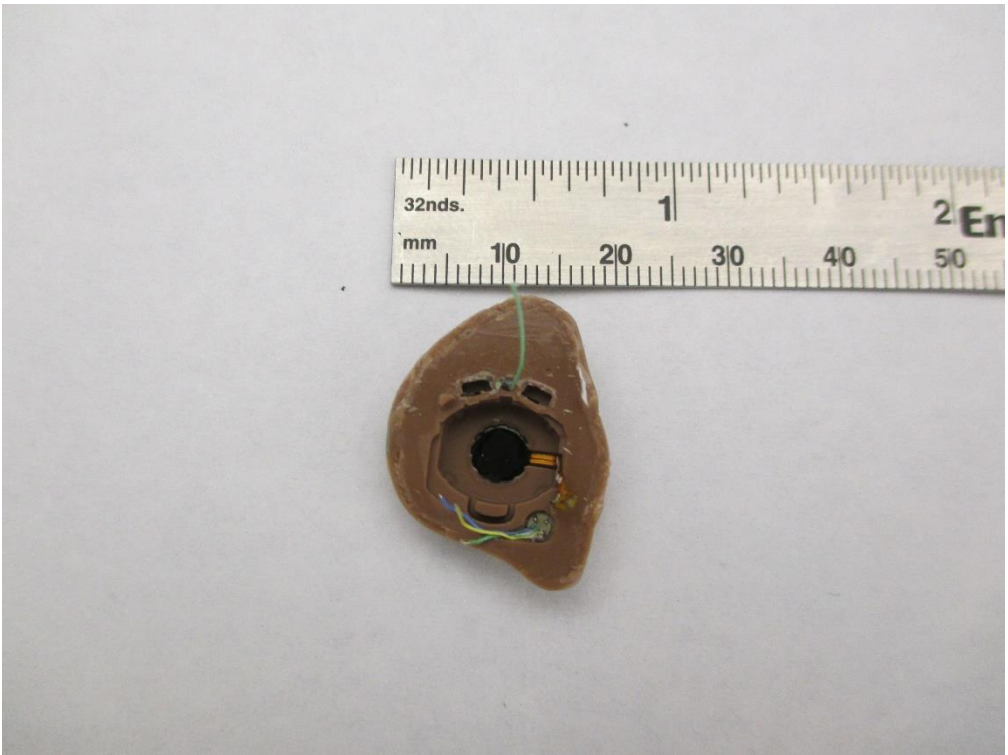
Faceplate side 2



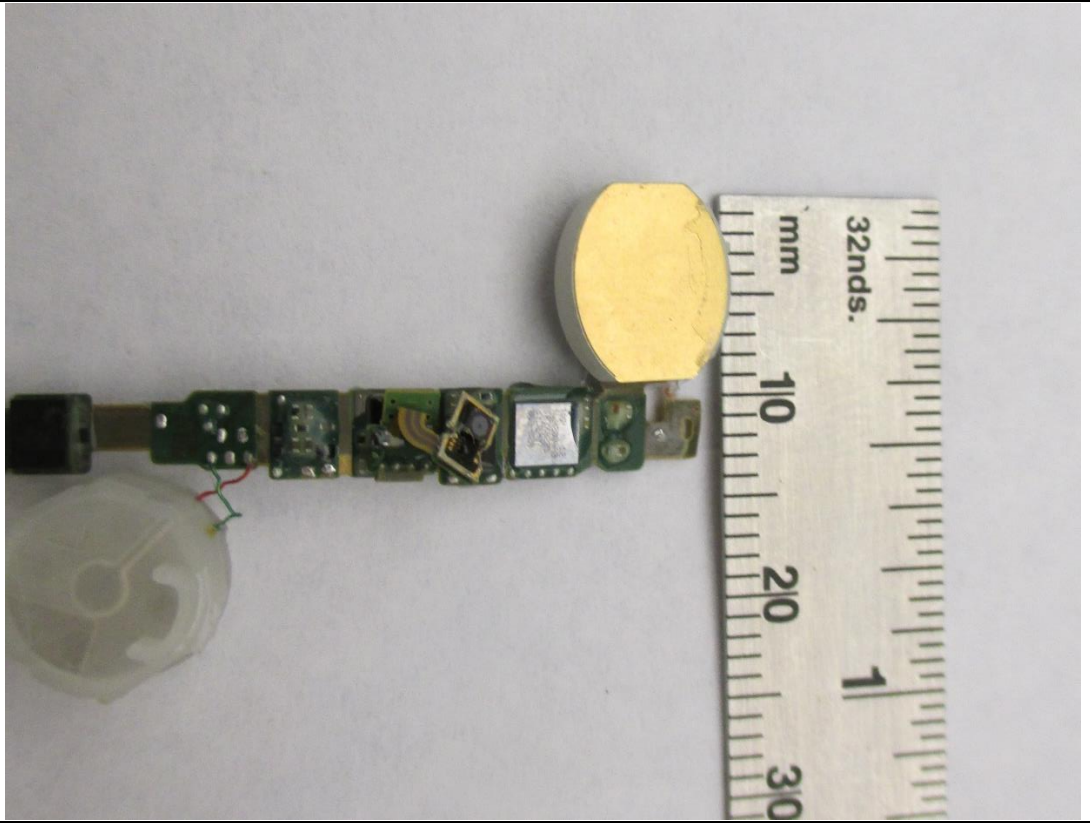
Faceplate showing battery and shell



Faceplate top, battery location



PCBA top



PCBA bottom

