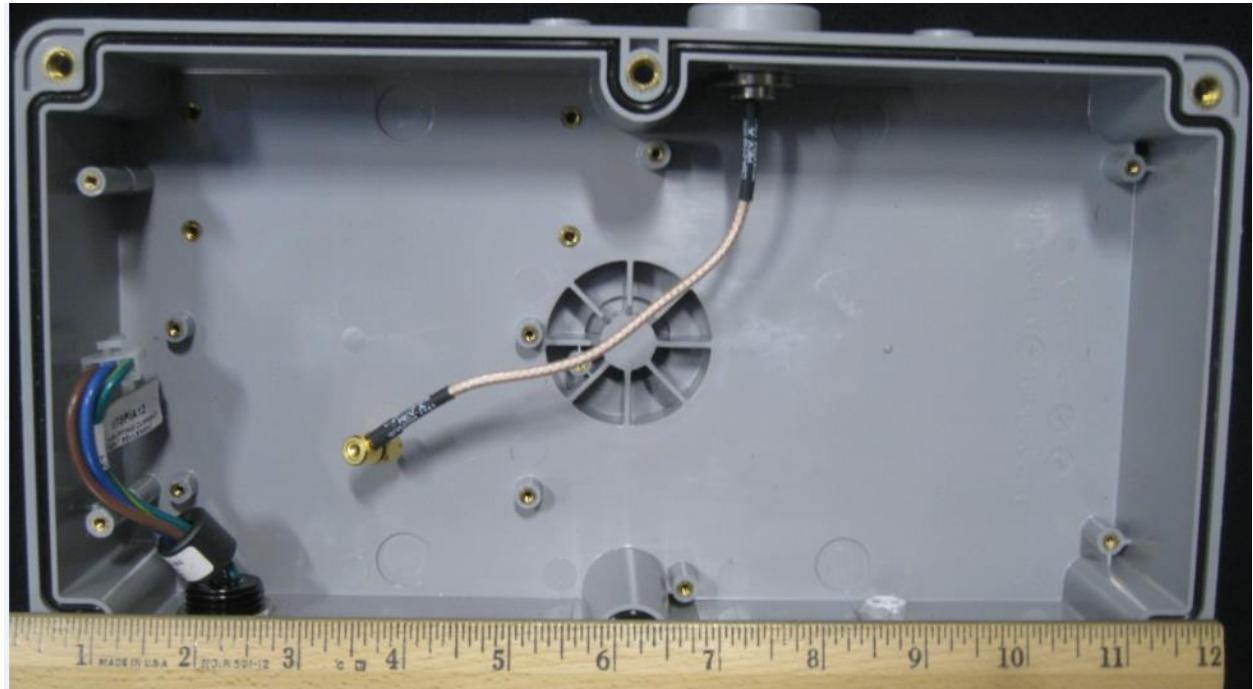


### ORRN(A) Internal Photos

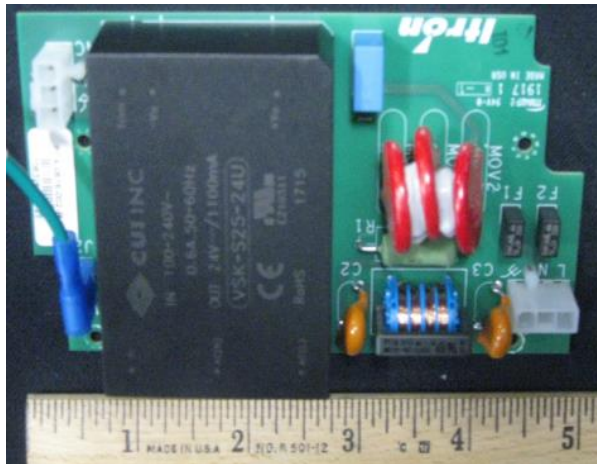
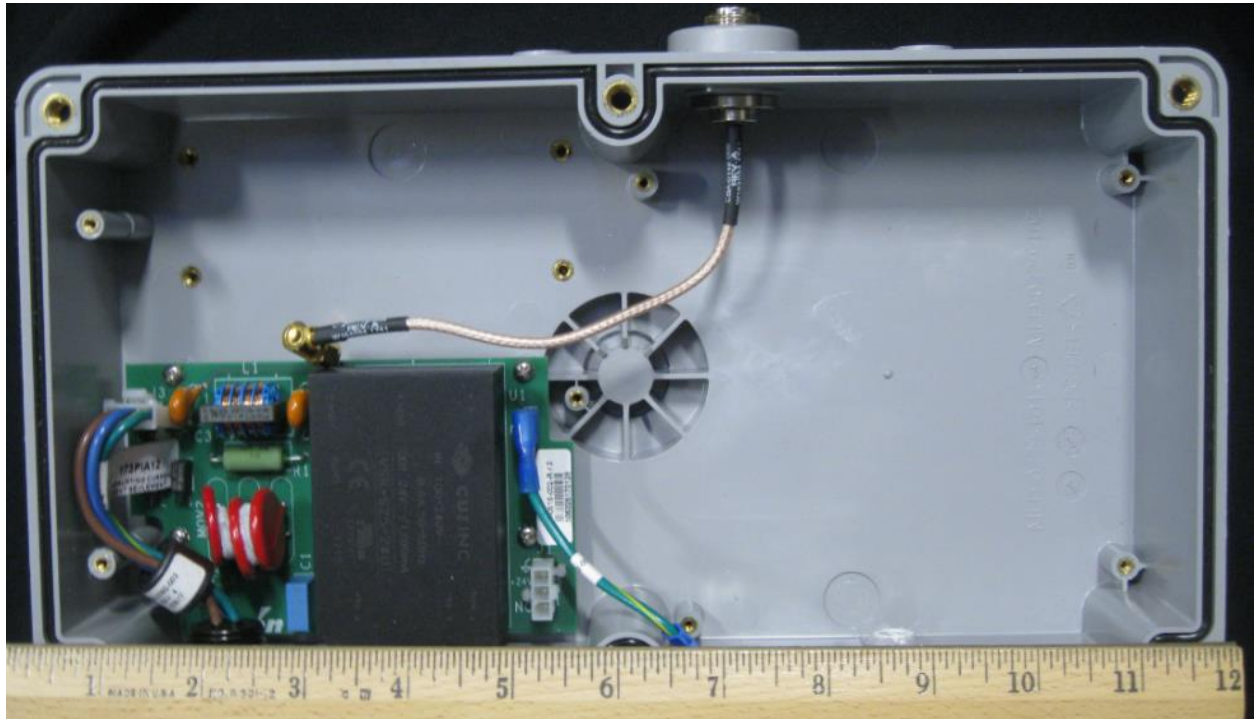
Overall inside photo – RF Switch Board, Base Board and Super Raptor



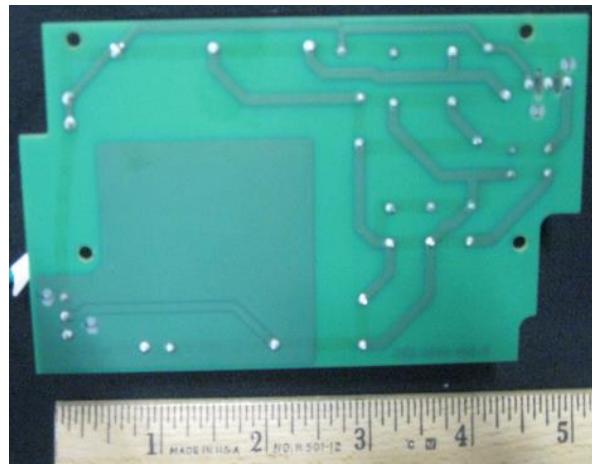
ORRN(A) Shell before PC boards are installed.



Power Supply Assembly installed

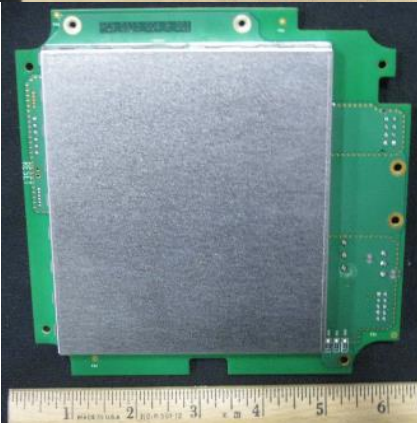
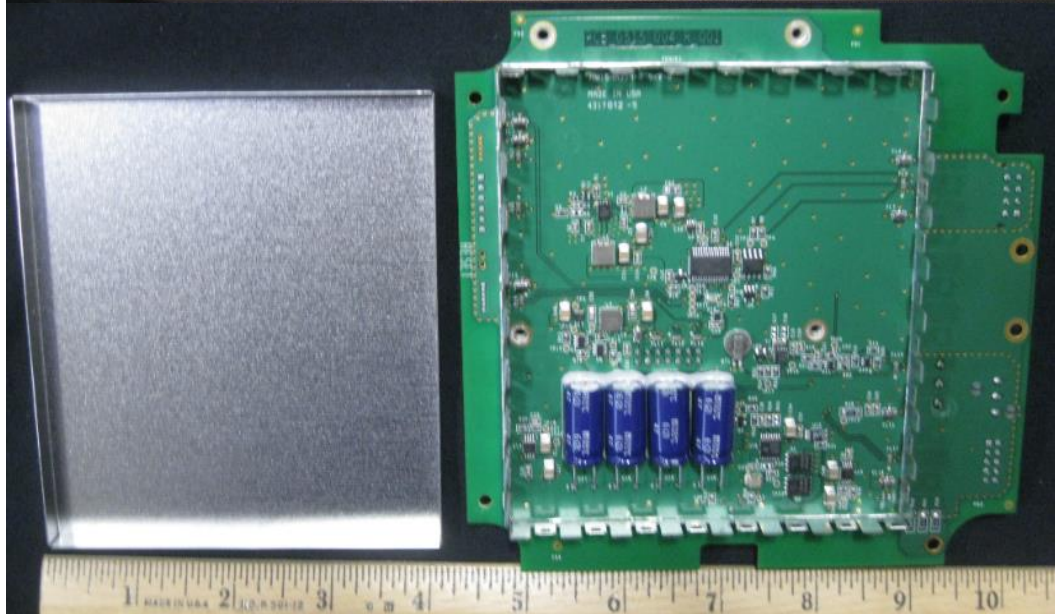
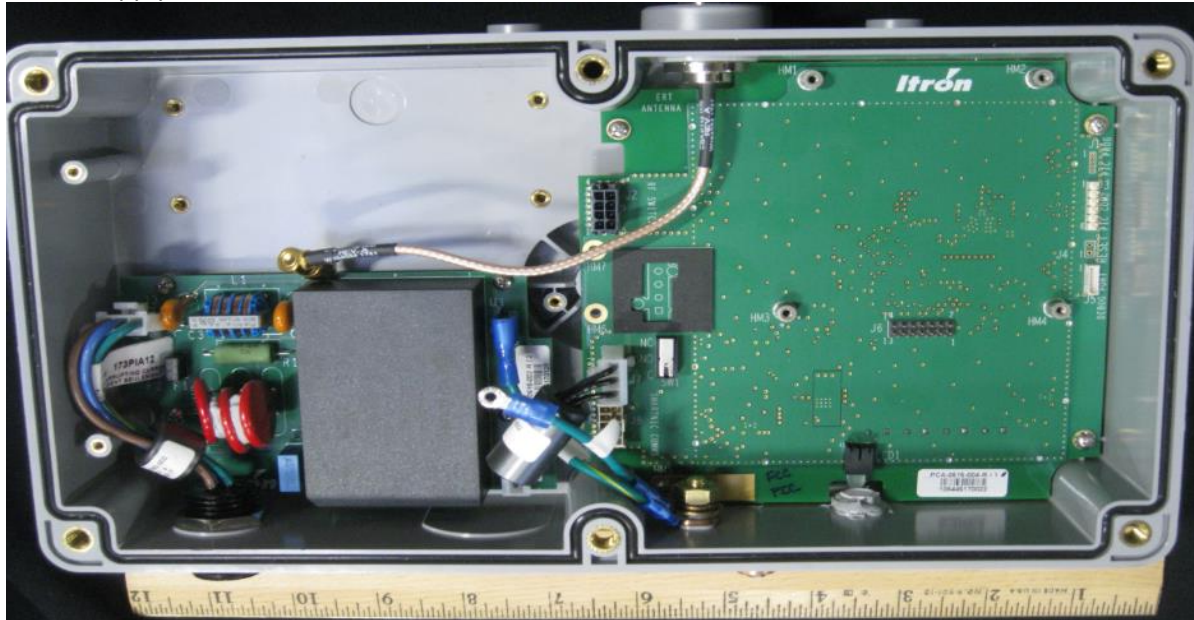


Power Supply Assembly - Top View



Power Supply Assembly - Bottom View

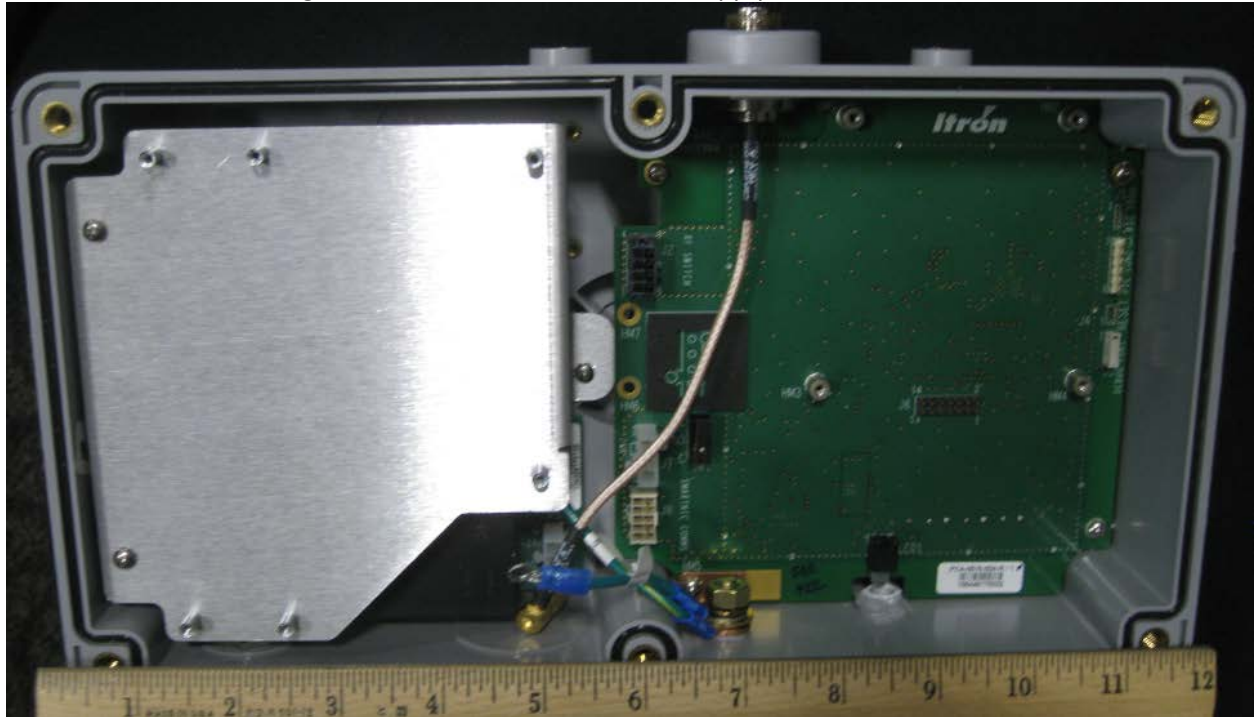
Power Supply and Base Board



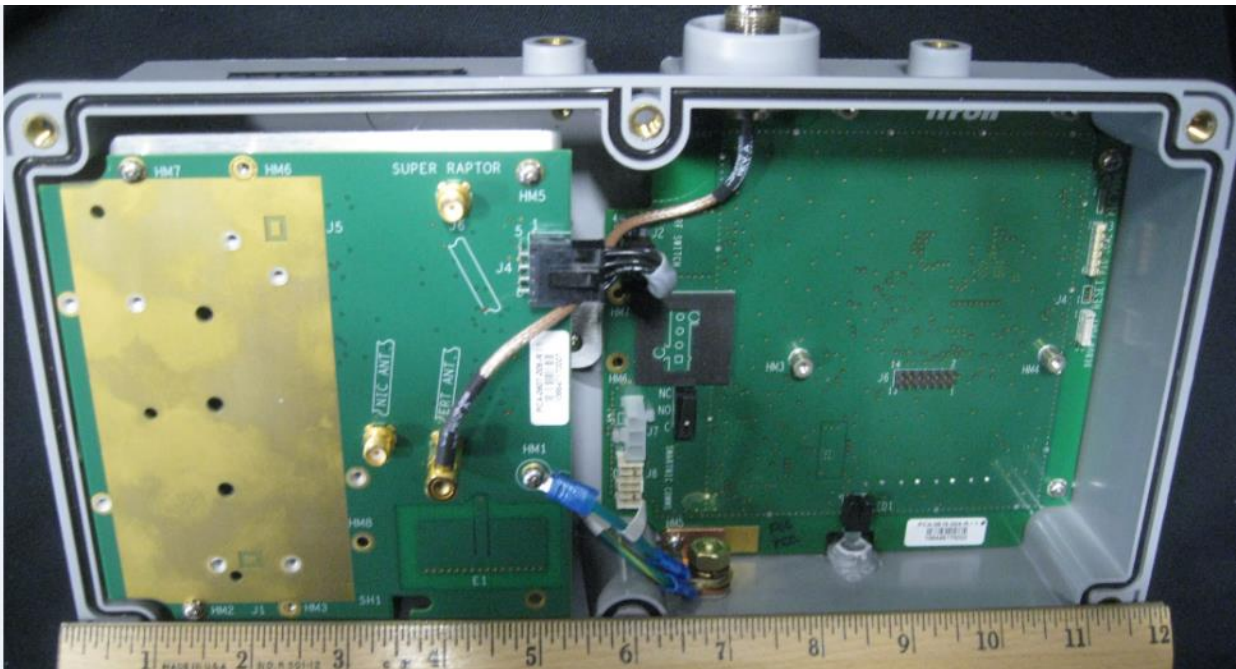
Base Board - Back View

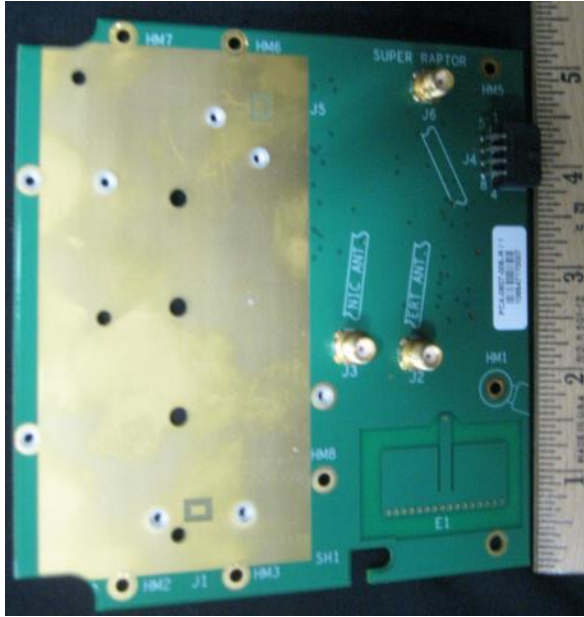
Base Board – Top View

RF Switchboard Mounting Deck and Base Board ... Power Supply mountes under the Deck

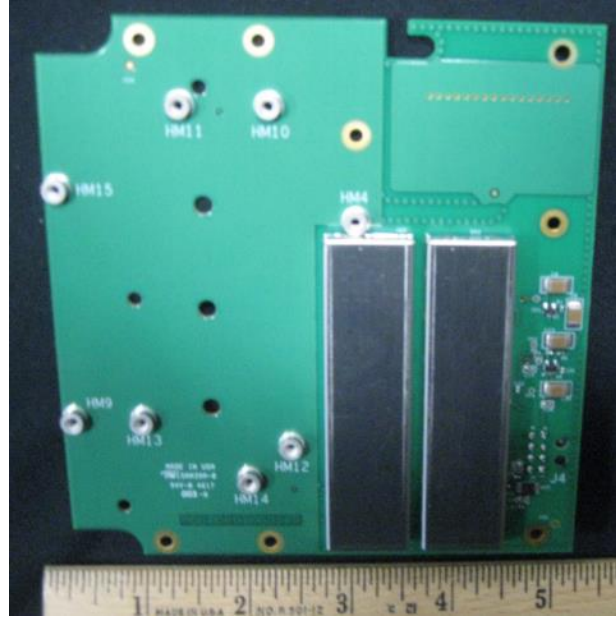


RF Switch Board without SmartNIC module mounted

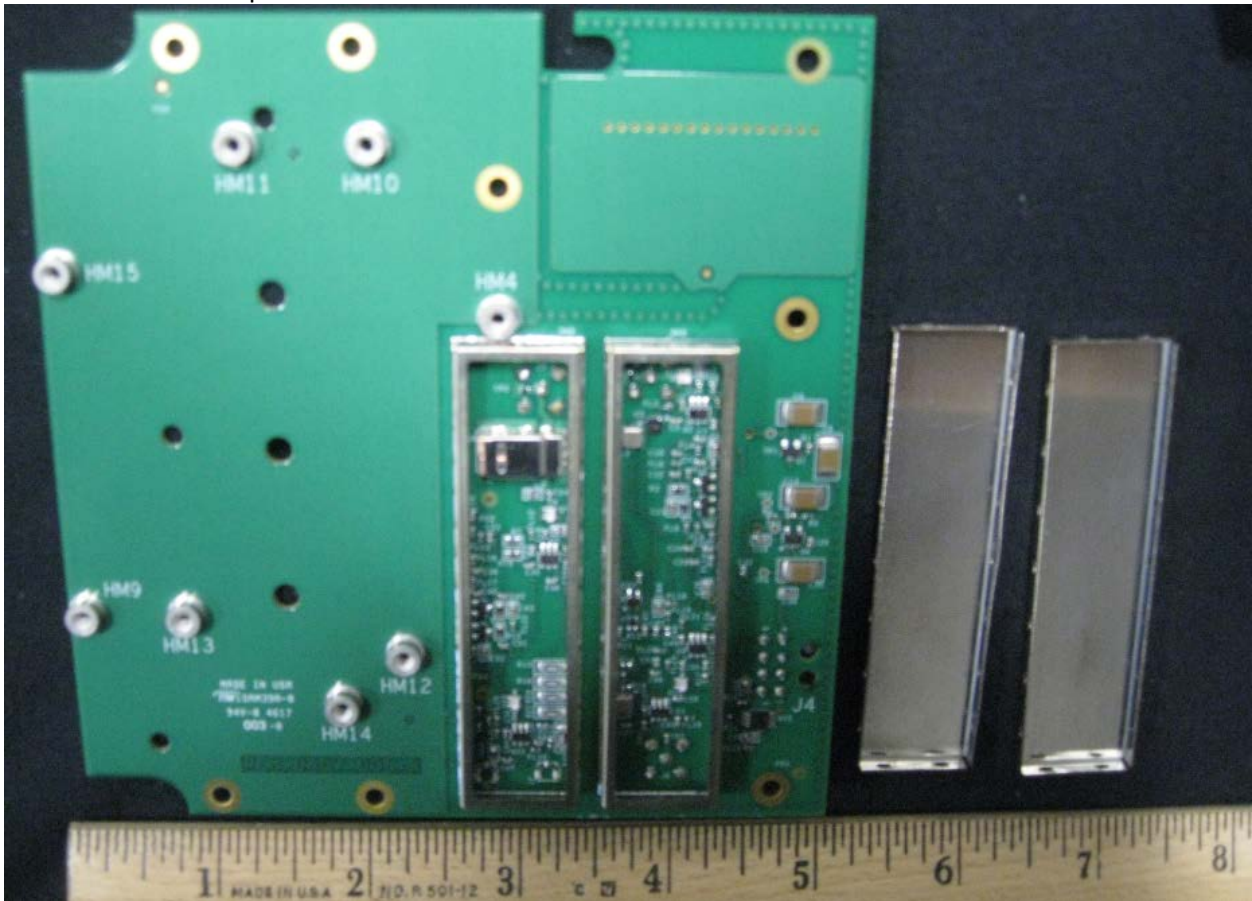




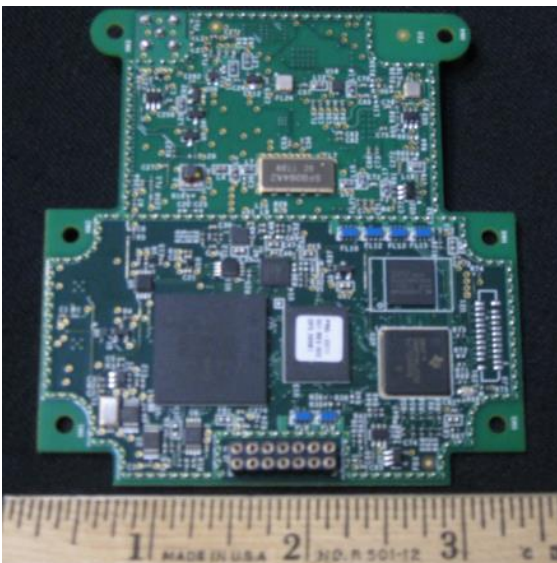
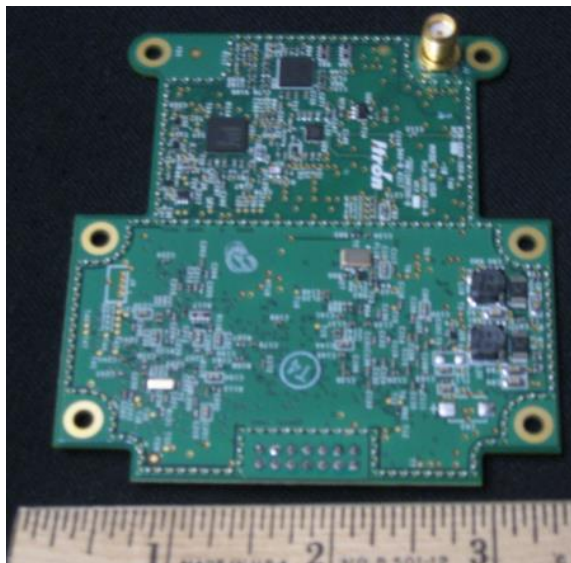
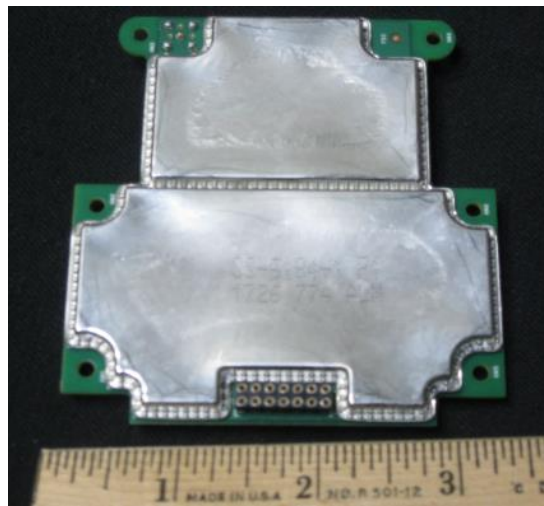
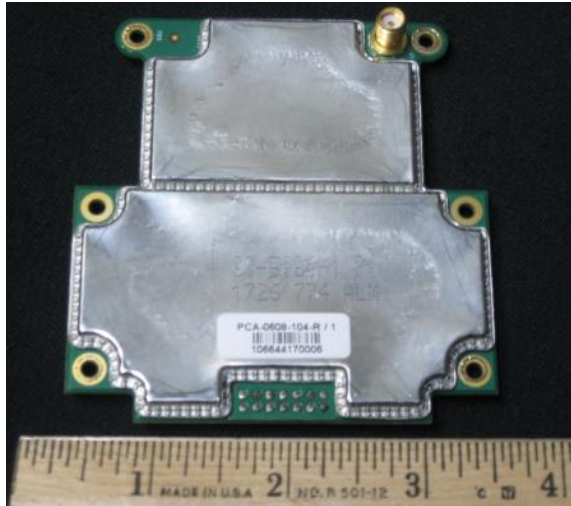
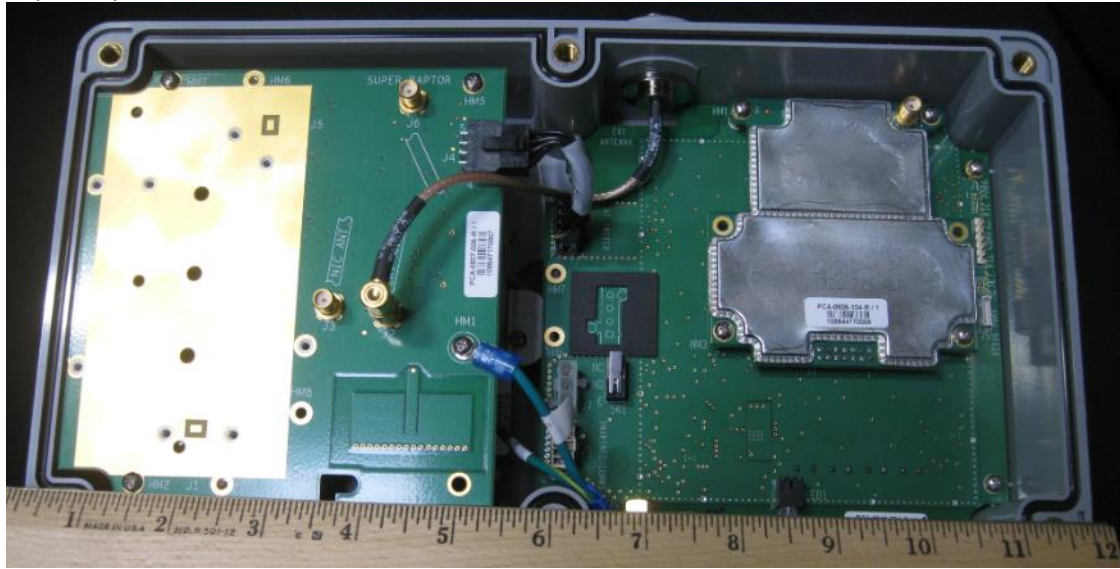
RF Switch Board - Top View



RF Switch Board - Bottom View



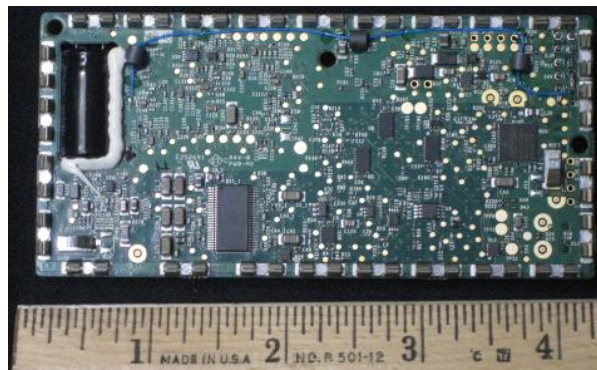
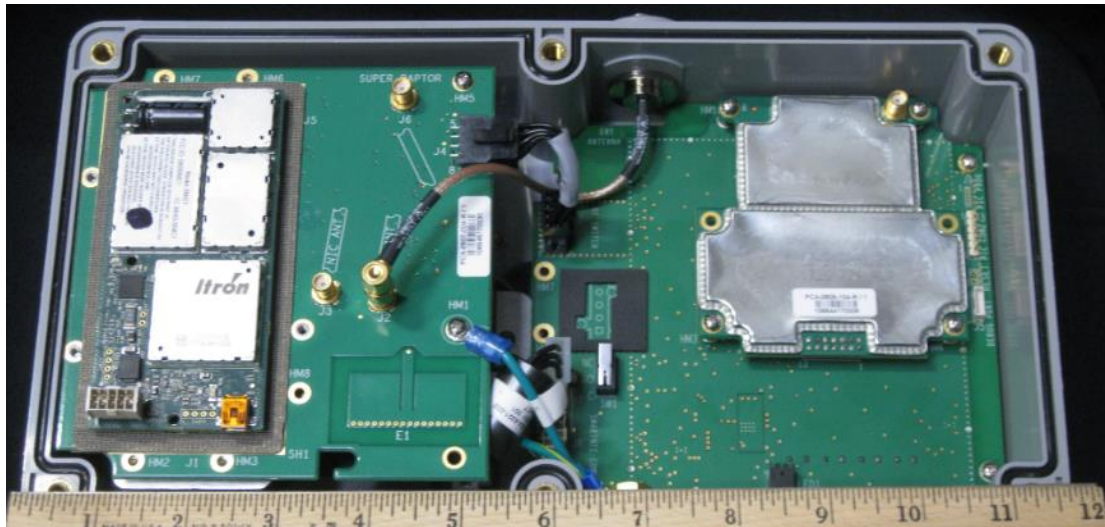
Super Raptor Radio Board



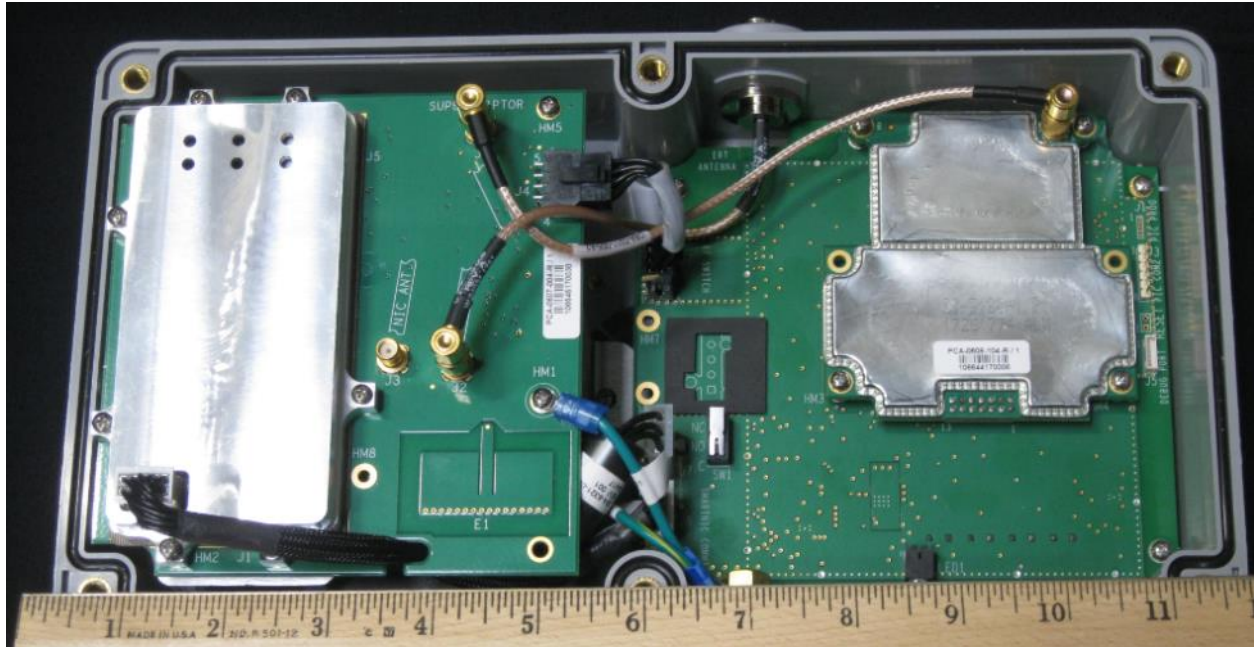
## Appendix A

Photos with the SNic module installed.  
See C2PC of FCC ID:SK9SNIC1 for adding module to ORRN(A) Host.

SNic Bottom Shield



All PCBs installed



Complete ORRN(A)

