

ORRN internal photos

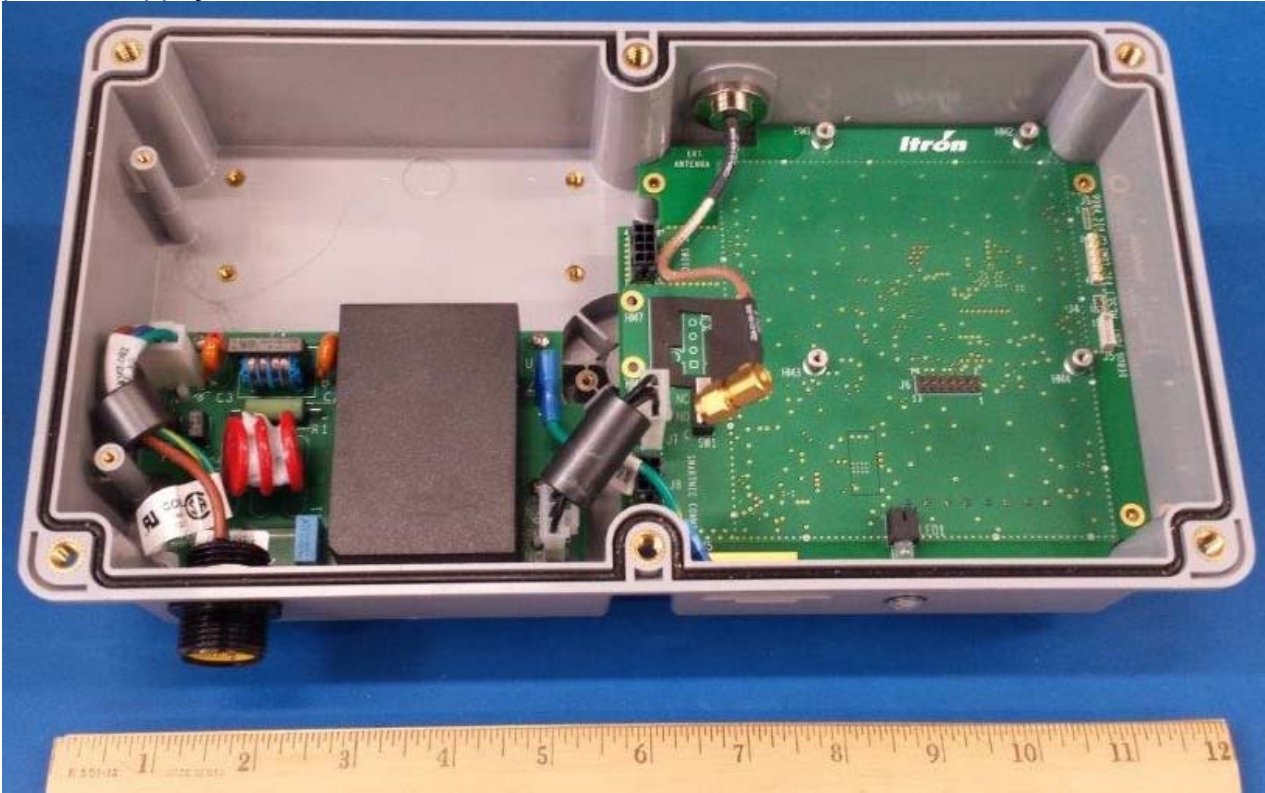
Overall inside photo.



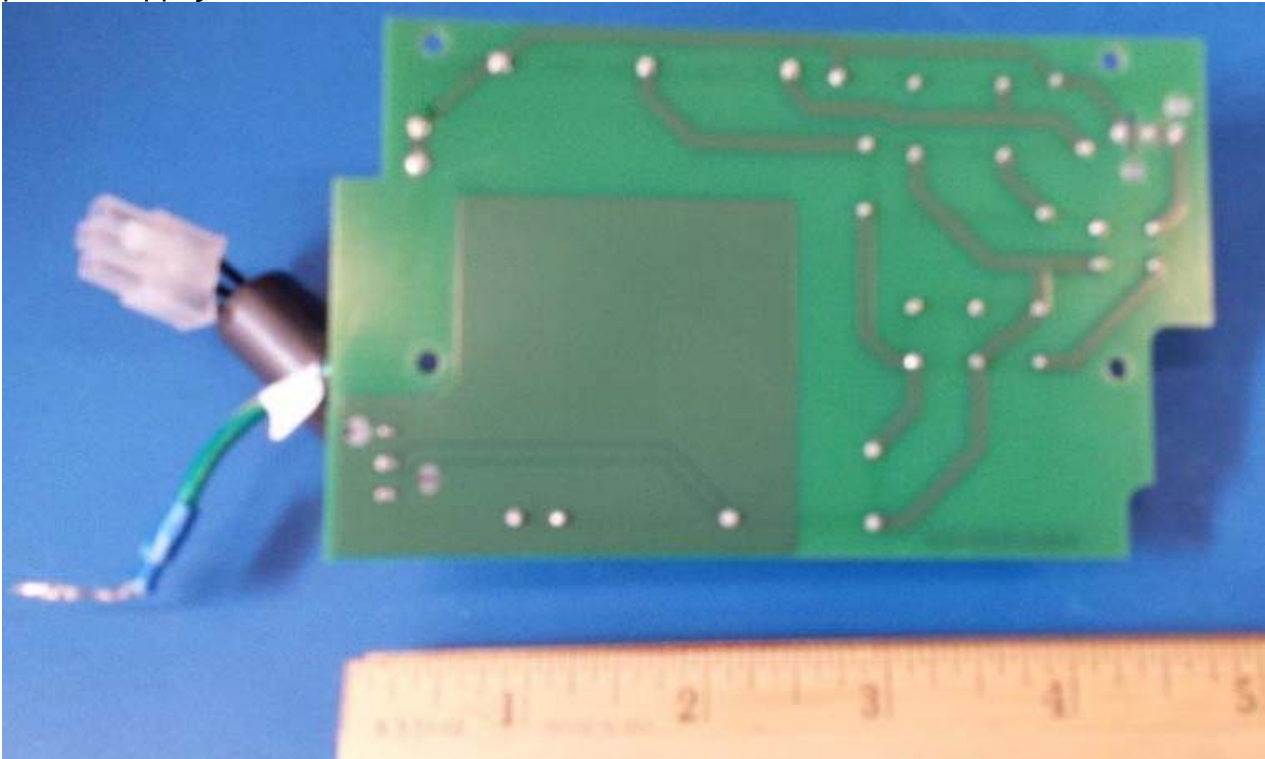
Grounding of the Base Board to the RF Switch Board to reduce radiated emissions.



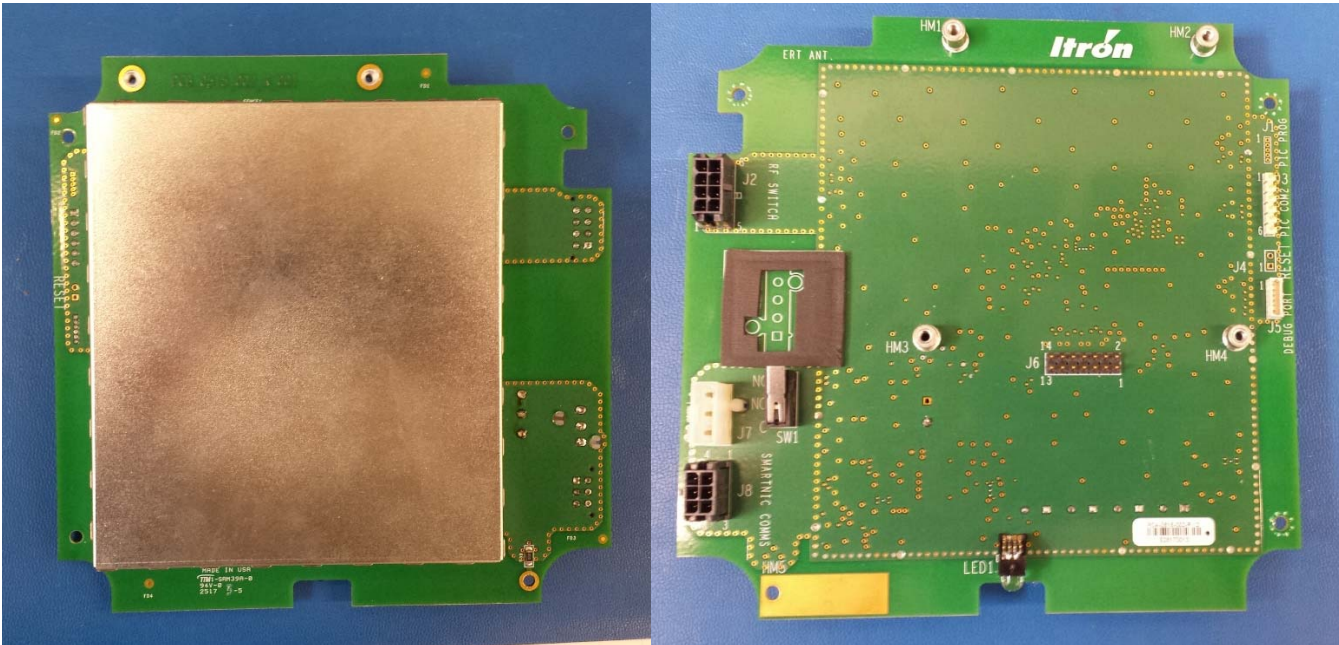
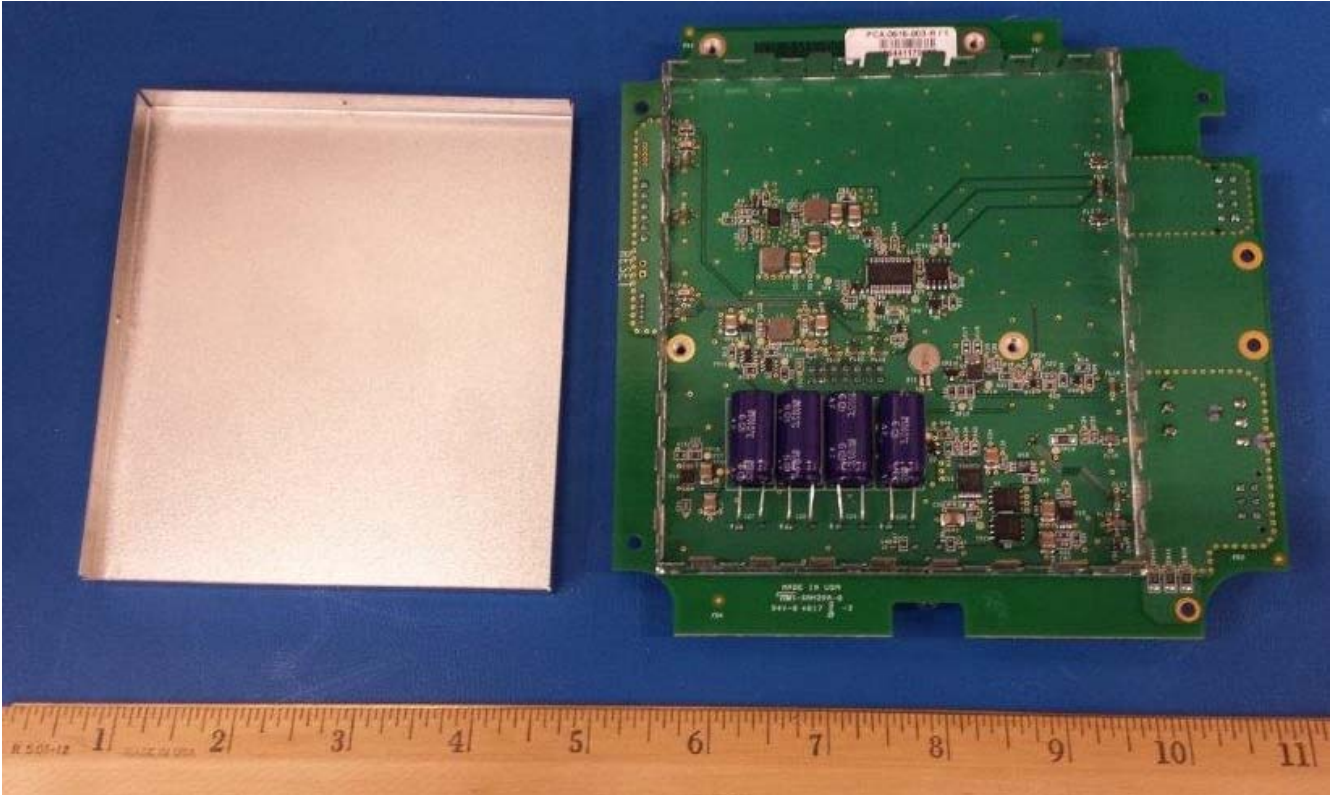
power supply and base board:



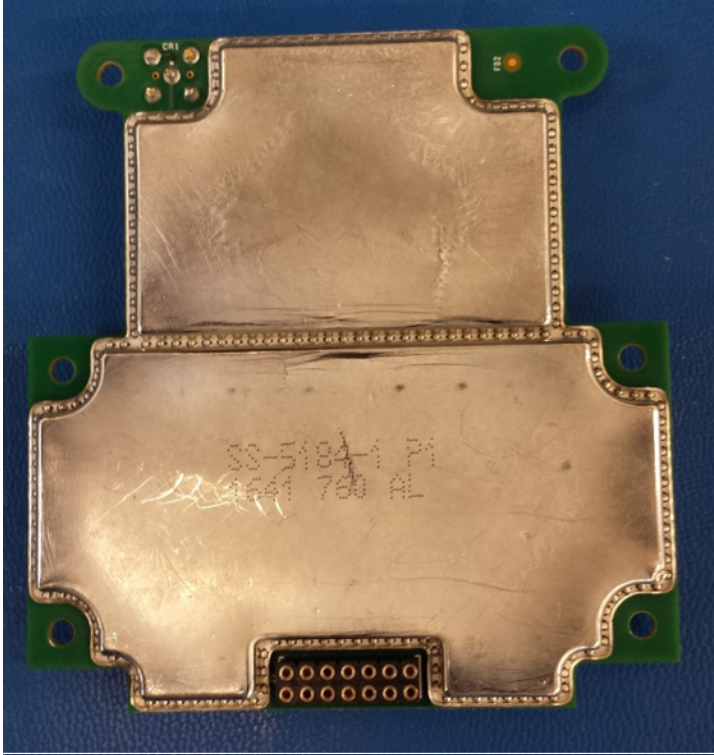
power supply board:



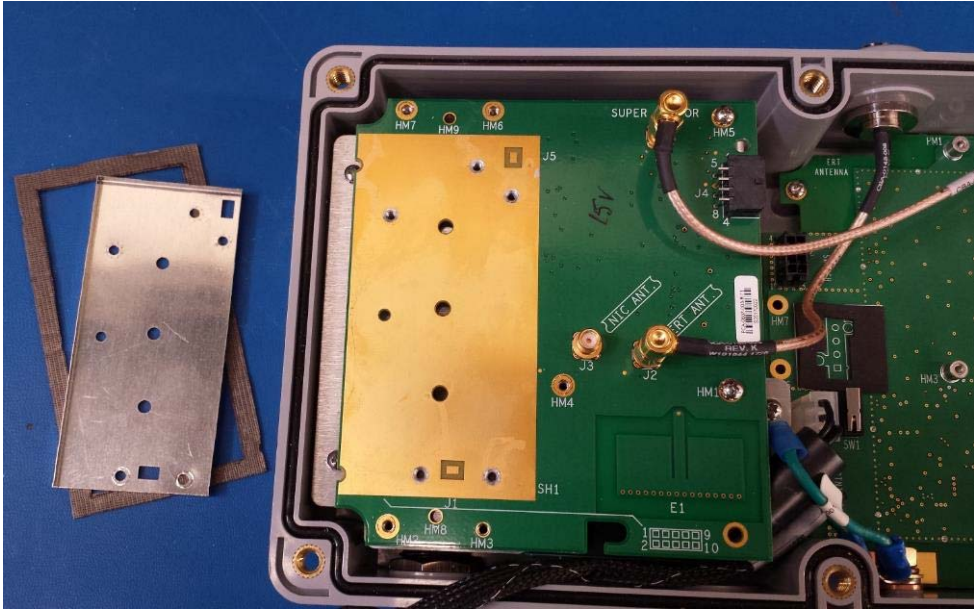
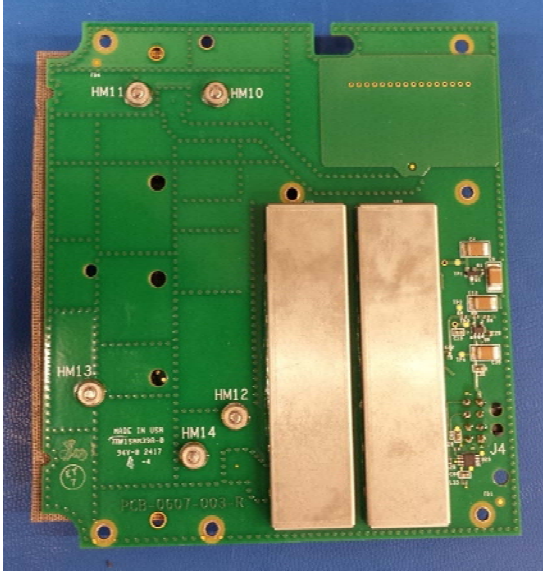
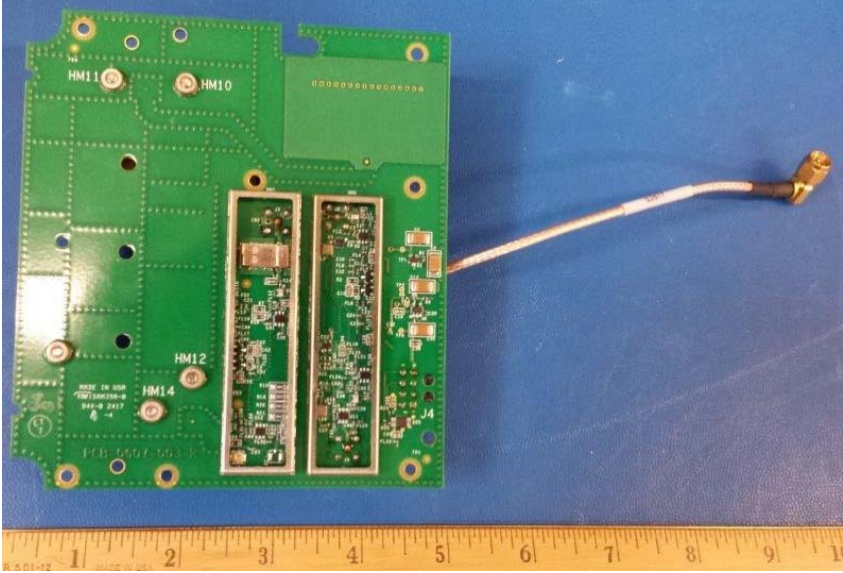
base board:



915 MHz ERT (Super Raptor) radio board:



RF switching board:



Battery compartment:



Appendix A

Photos with the SNic module installed.
See C2PC of FCC ID:SK9SNIC1 for adding module to ORRN Host.

