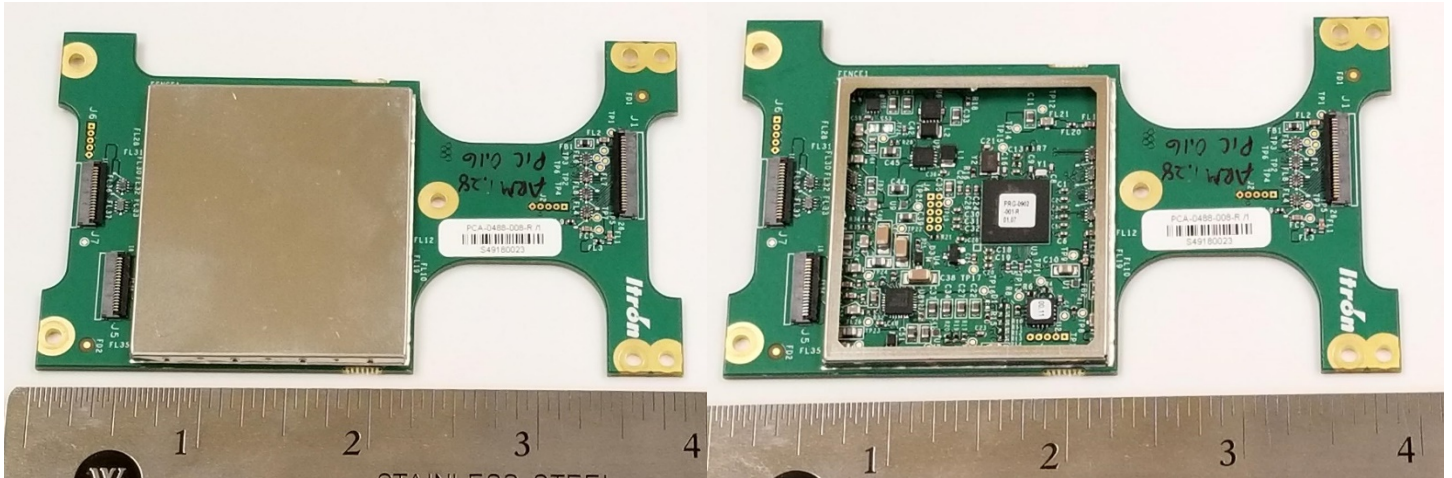
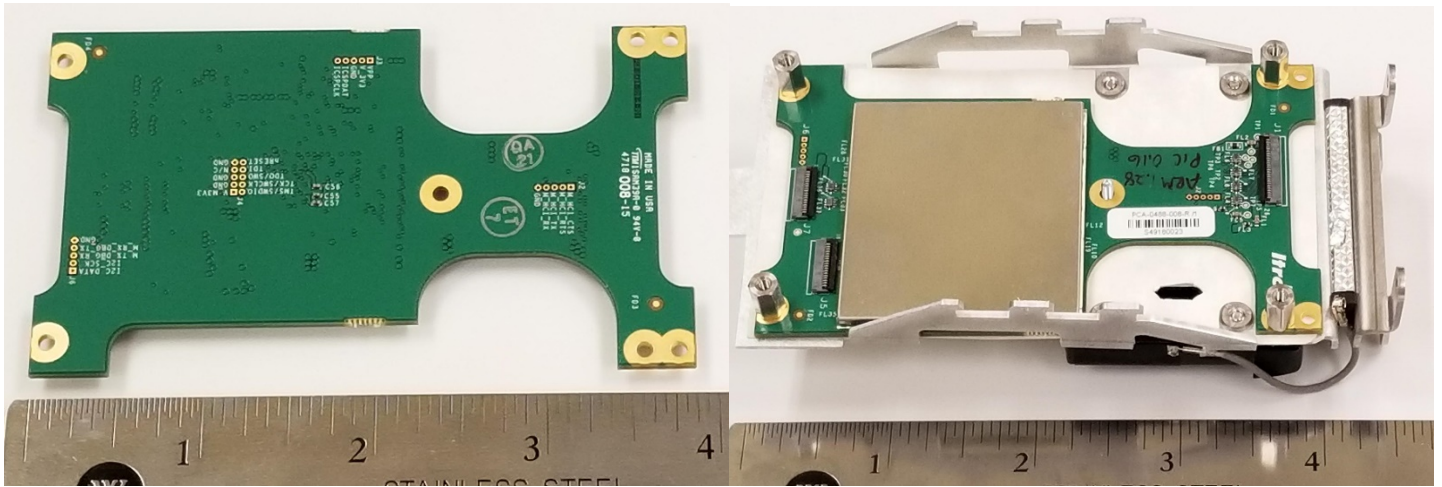
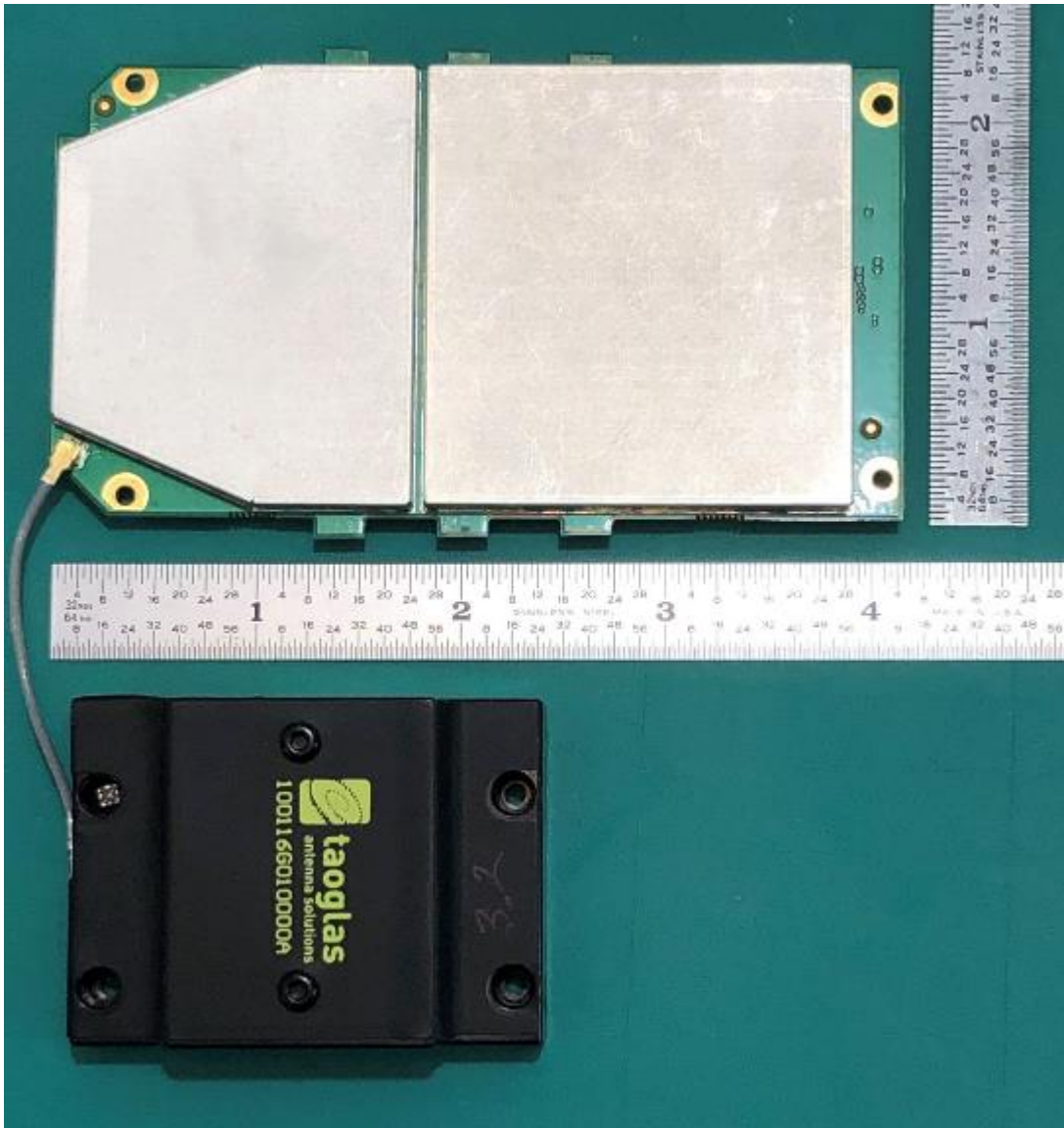


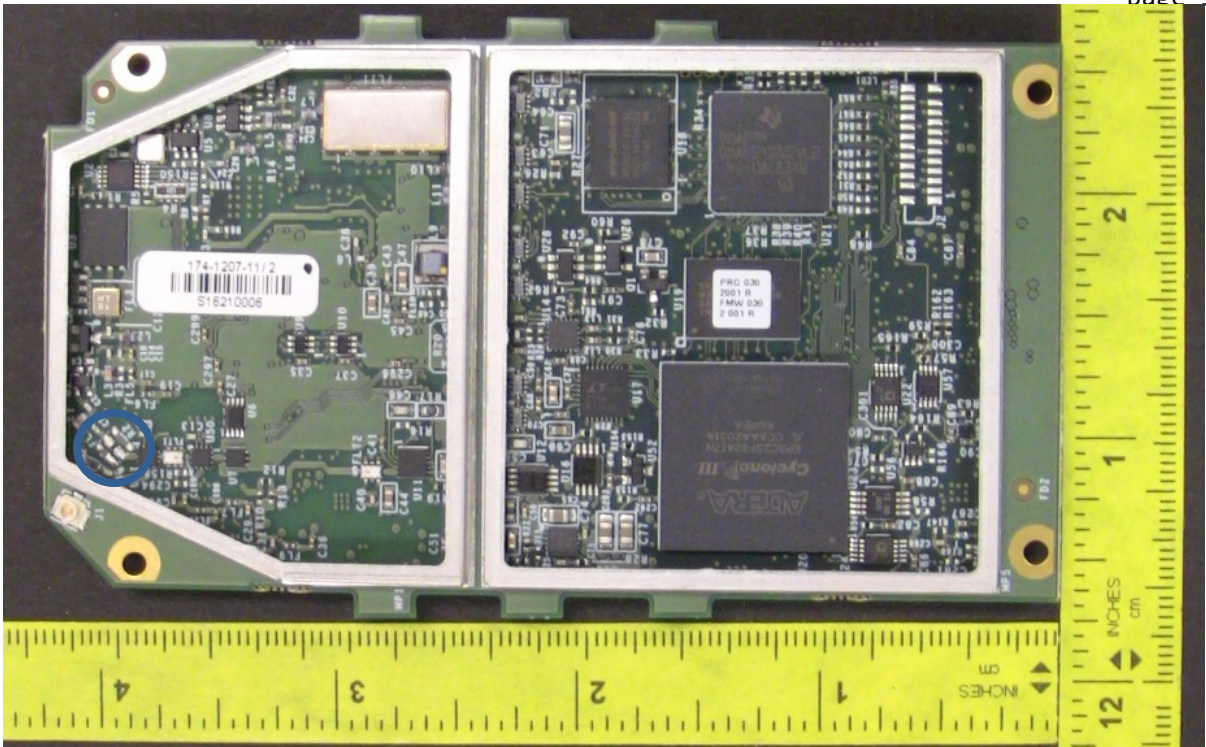
IMRD-INT and IMRD-EXT - photos_internal



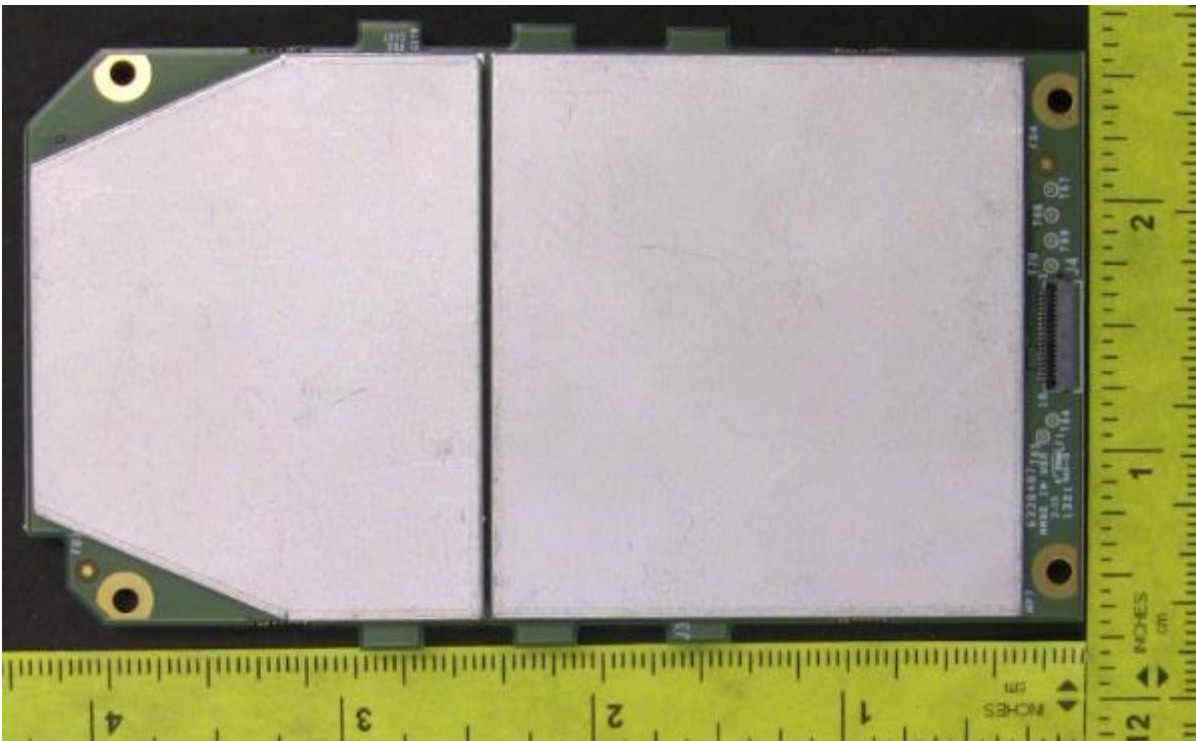
Host board (all devices)



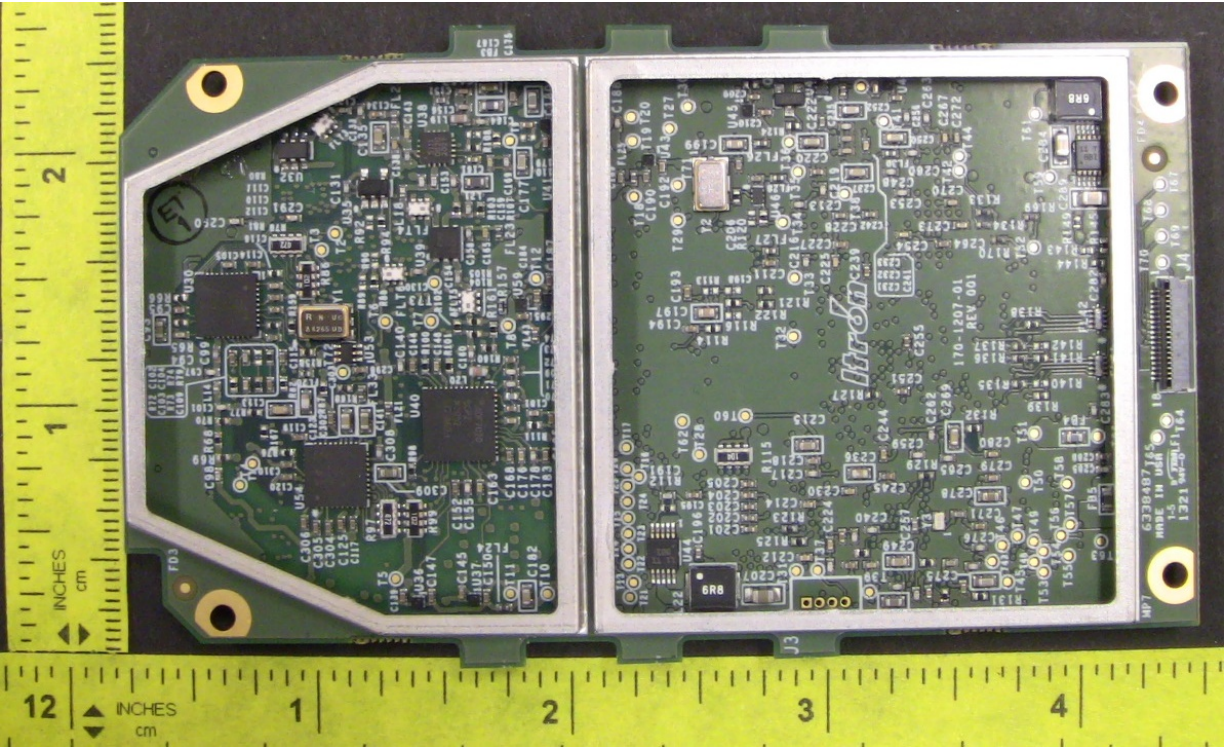
Radio board - Top Side w/shield (all devices)
Taoglas internal antenna attached (IMRD-INT only)



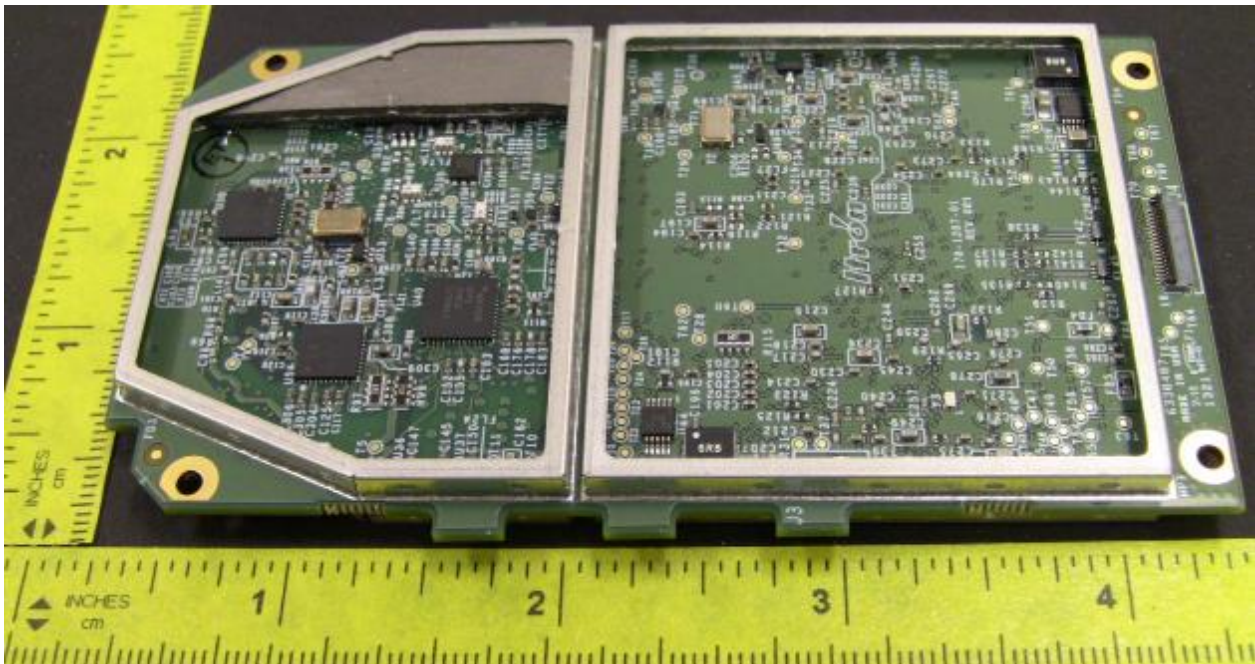
Radio board - Top Side w/shield
Filter FL1 (circled) placed on IMRD-INT radio only



Radio board - Bottom Side w/shield (all devices)



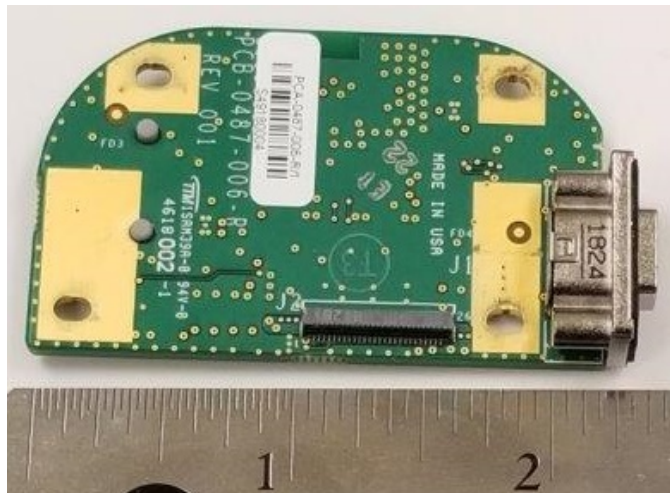
Radio board - Bottom Side w/o shield and w/o Poly-Iron (all devices)



Radio board - Bottom Side w/o shield and w/Poly-Iron (all devices)



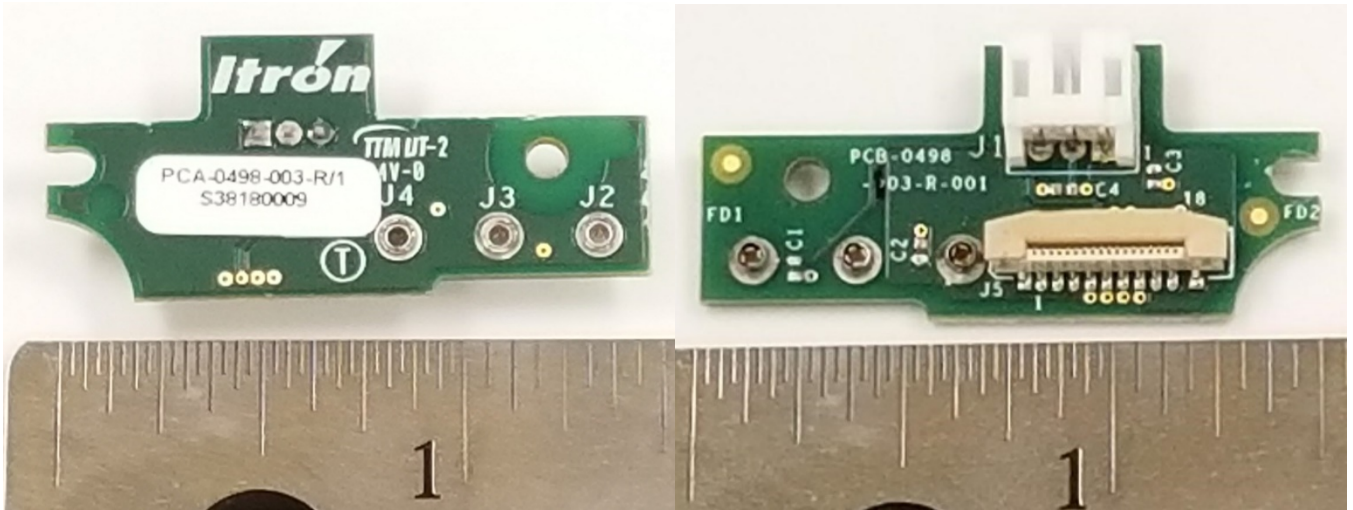
Communications Control Board - Top Side (all devices)



Communications Control Board - Bottom Side (all devices)



Top cap (all devices)



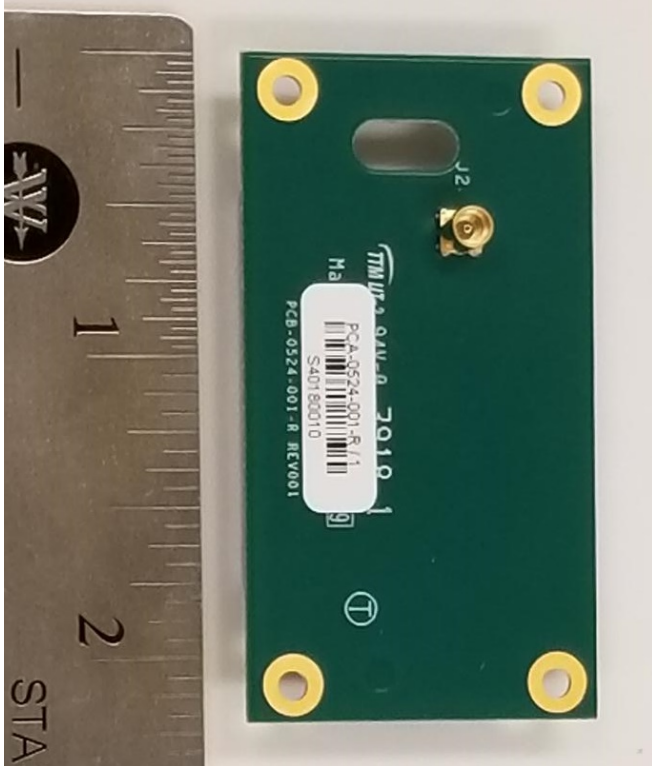
Battery Charger Interface Board - Top and Bottom sides (all devices)



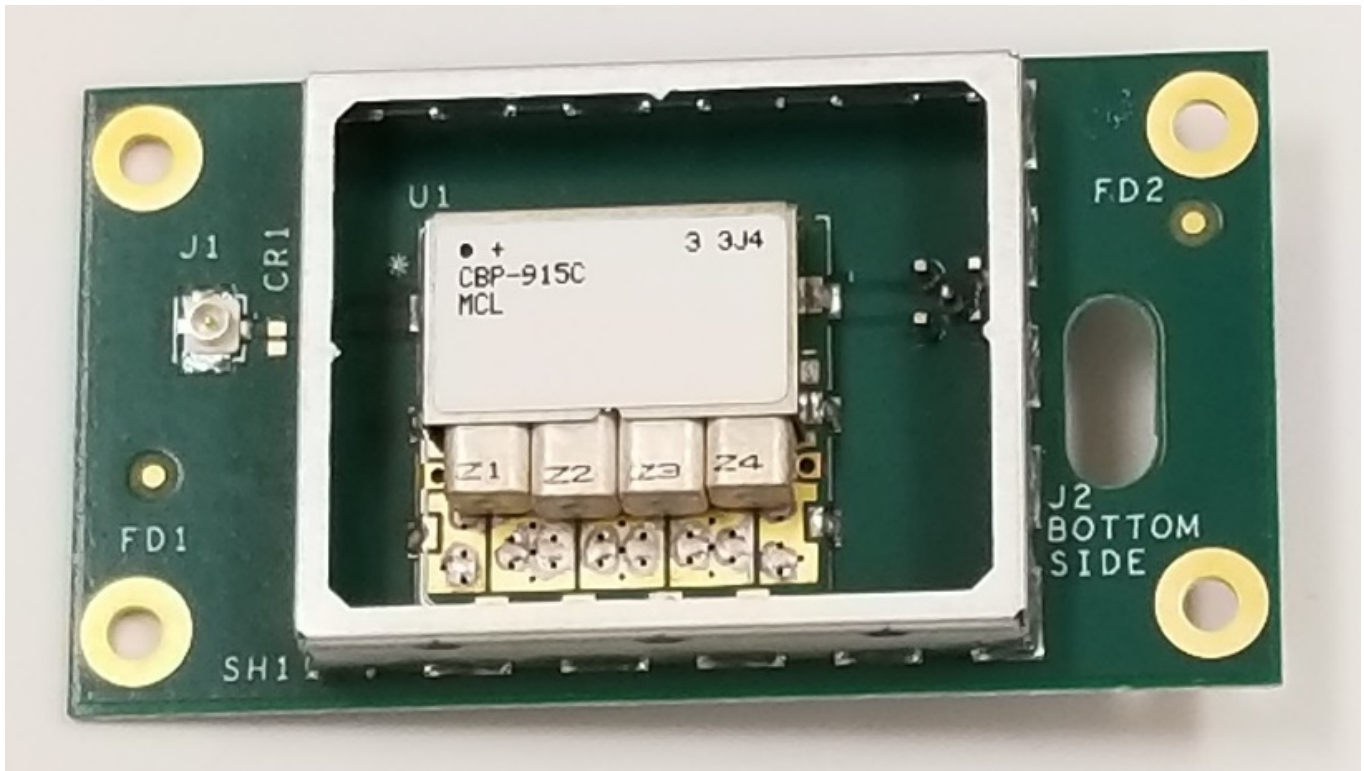
Bottom Cap (all devices)



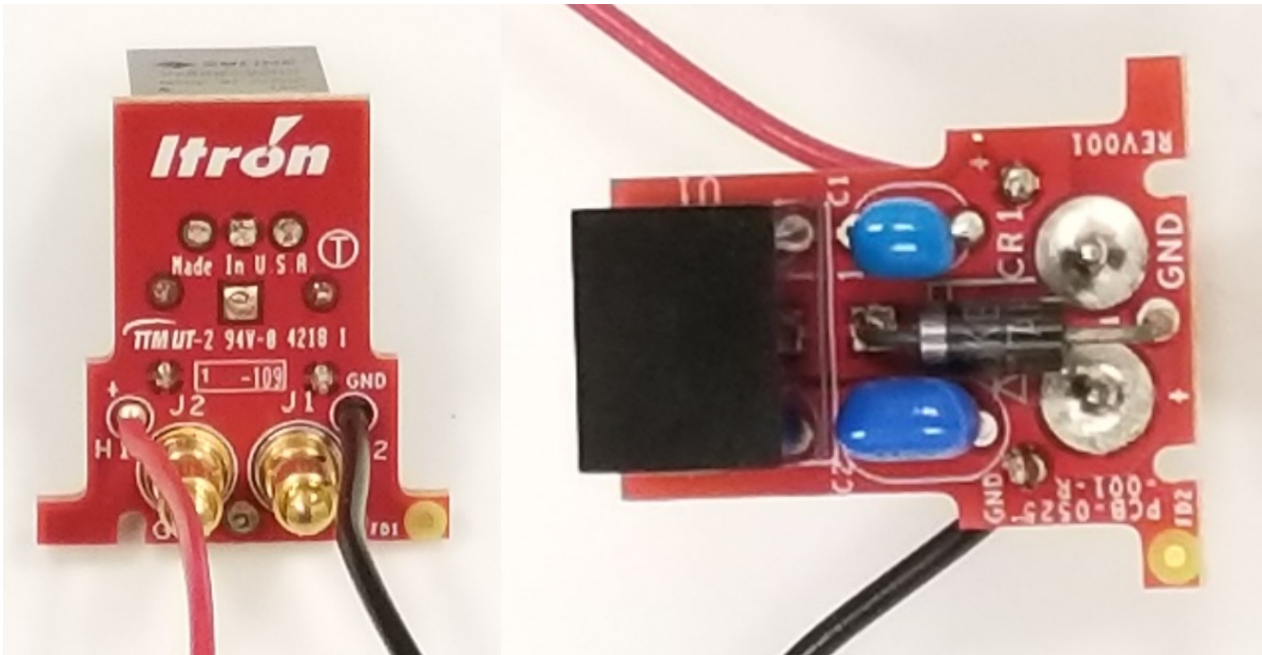
Battery (all devices)



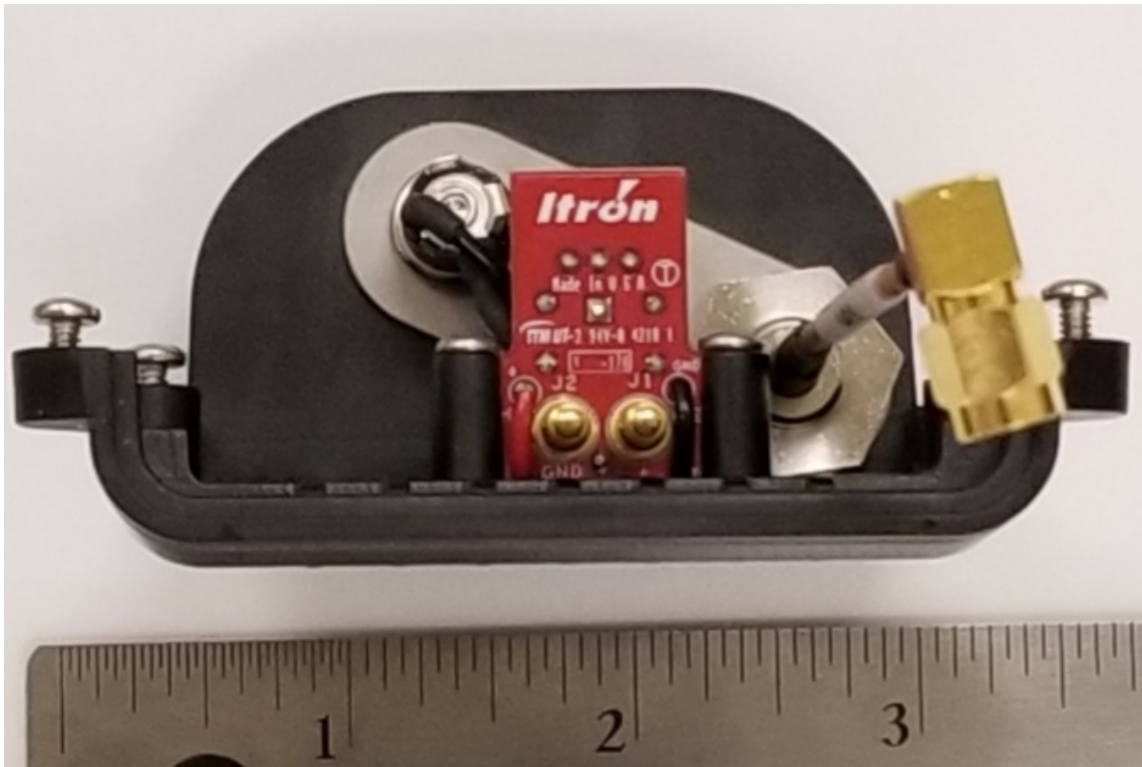
Filter Board - Bottom and Top Sides (IMRD-EXT only)



Filter Board - Top Side, shield removed



Charge Pin Board - Top and Bottom Sides (IMRD-EXT only)



In the base clamp on feature (IMRD-EXT only)



More of the base clamp on feature (IMRD-EXT only)