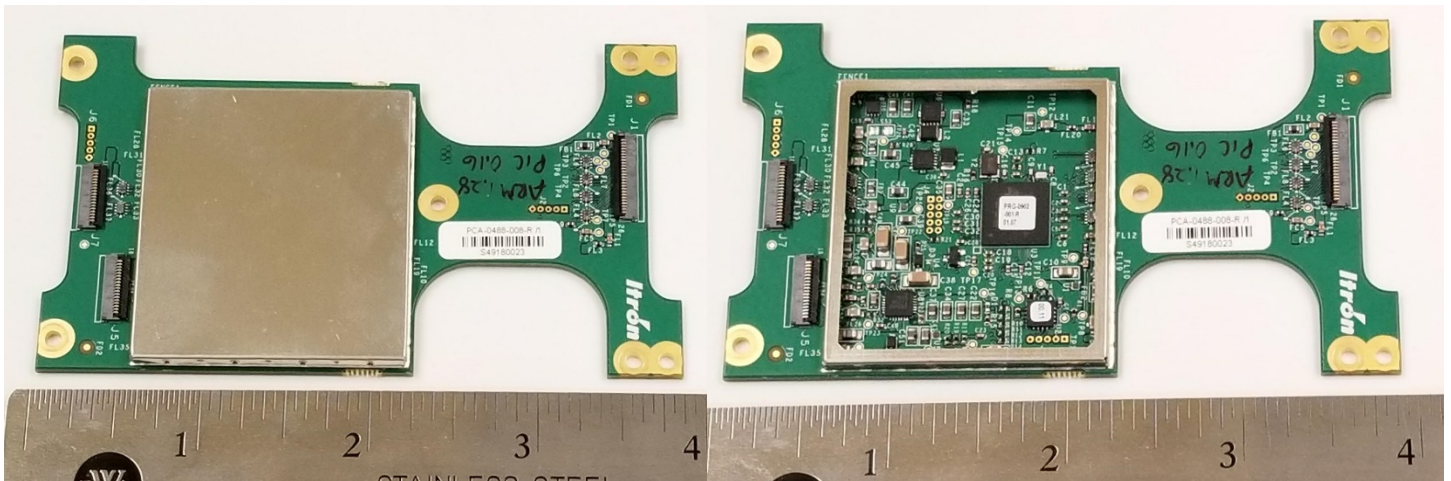
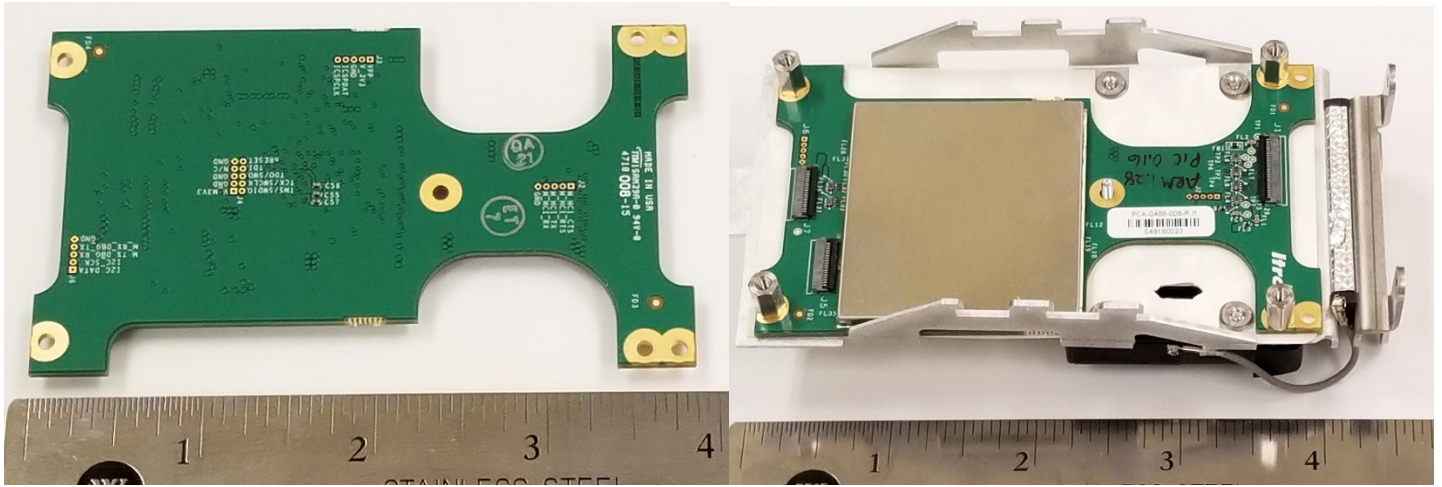
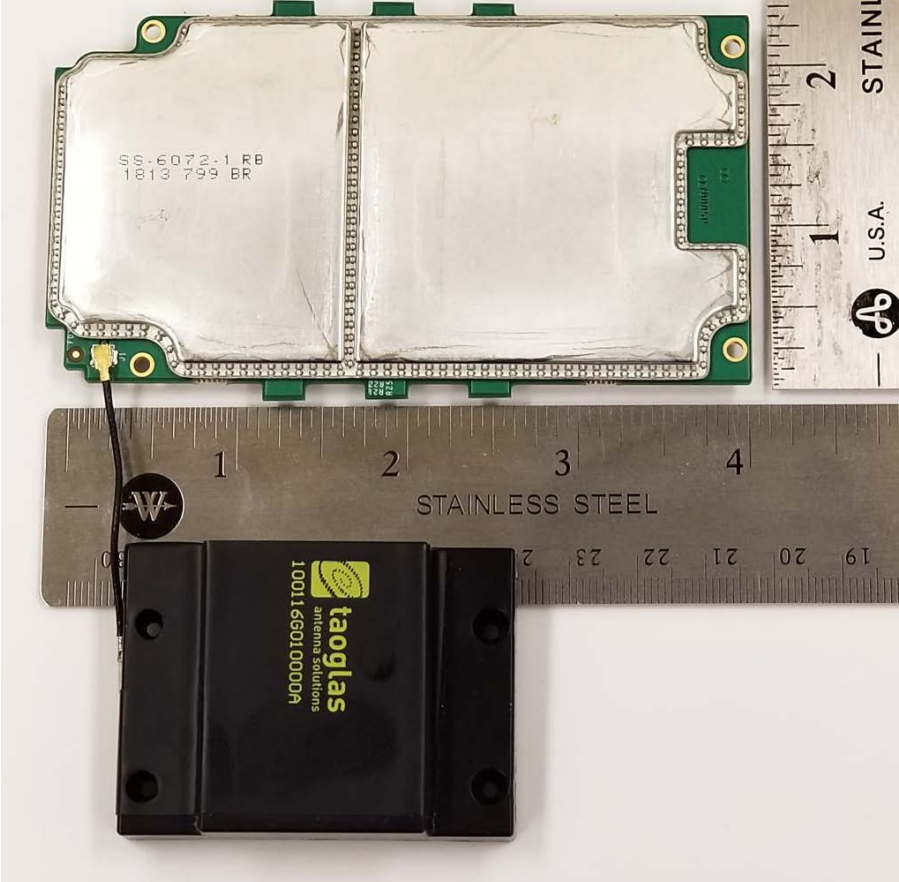


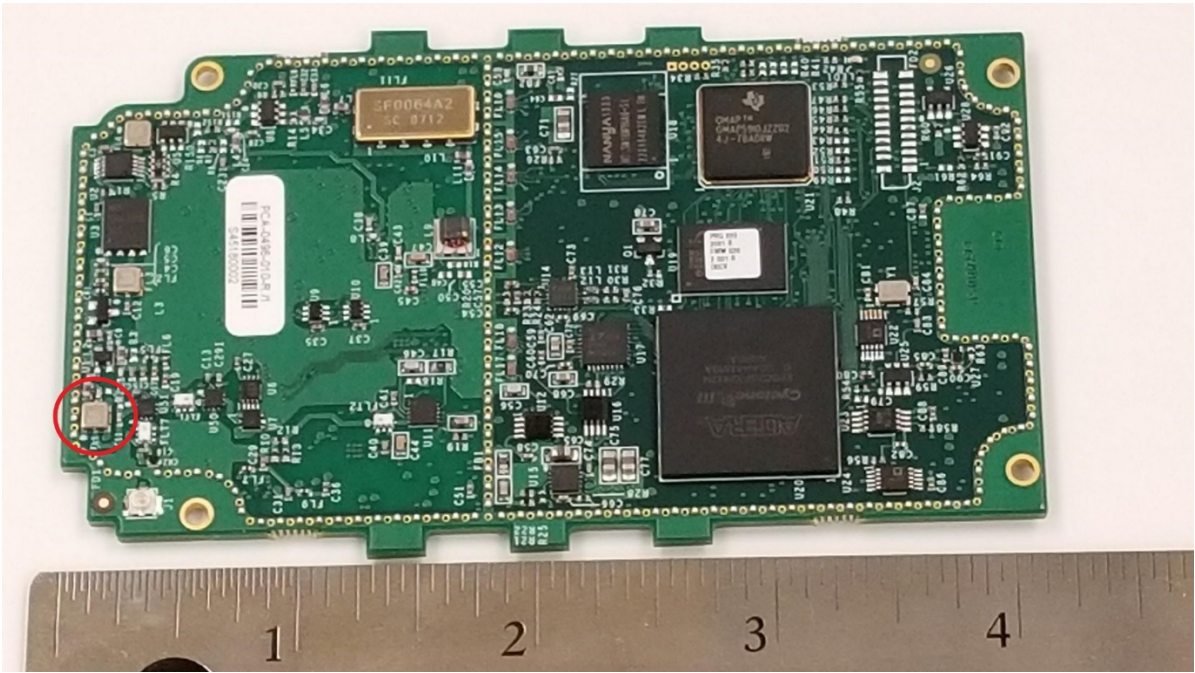
IMRB-INT (IMR2) and IMRB-EXT (IMR-XA/IMR-FT) - photos_internal



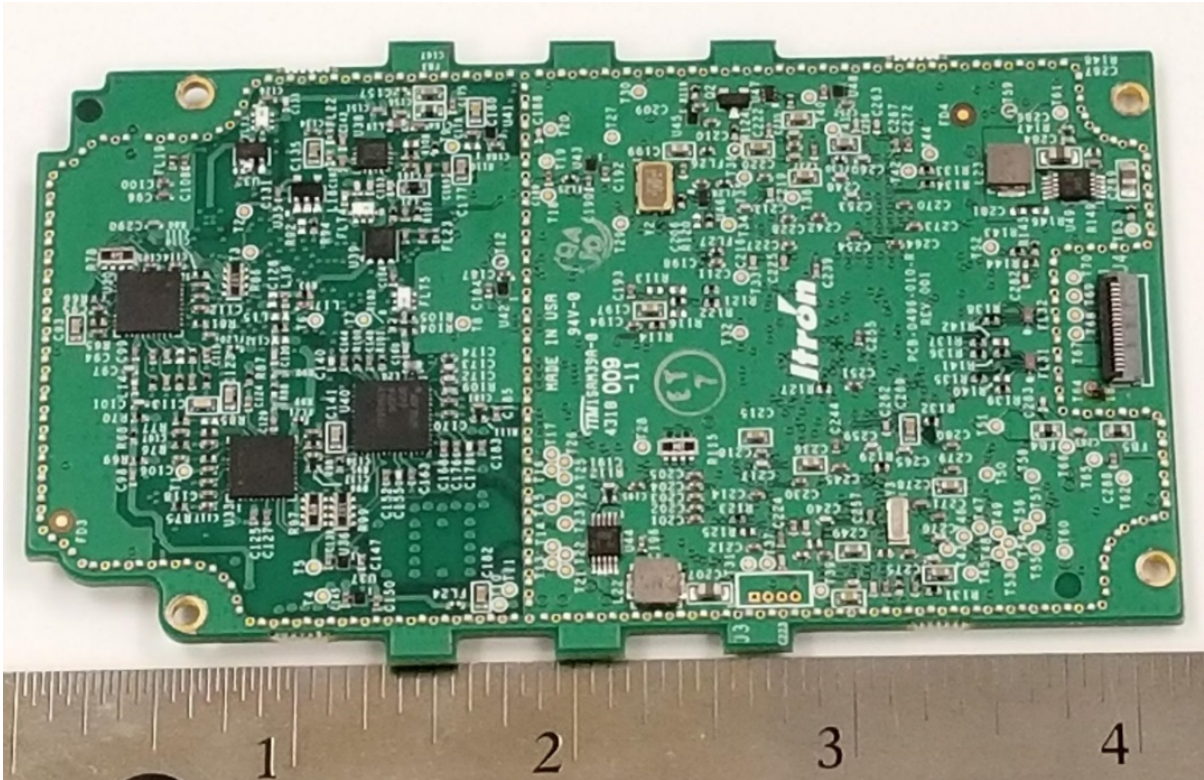
Host board (all devices)



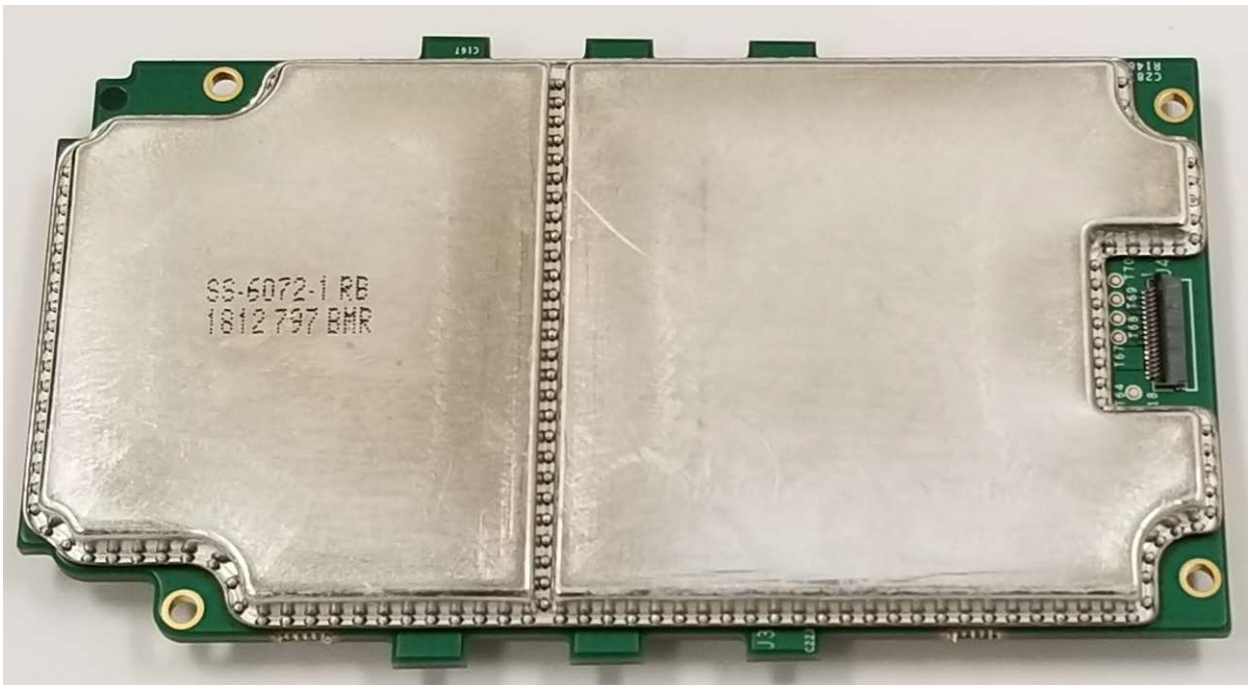
Radio board - Top Side w/shield (all devices)
Taoglas internal antenna attached(IMRB-INT only)



Filter FL1 (circled) not used on IMRB-EXT radio



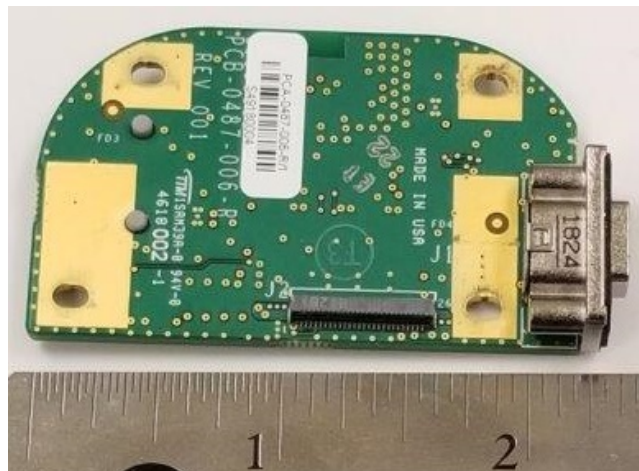
Radio board - Bottom Side w/o shield (all devices)



Radio board - Bottom Side w/shield (all devices)



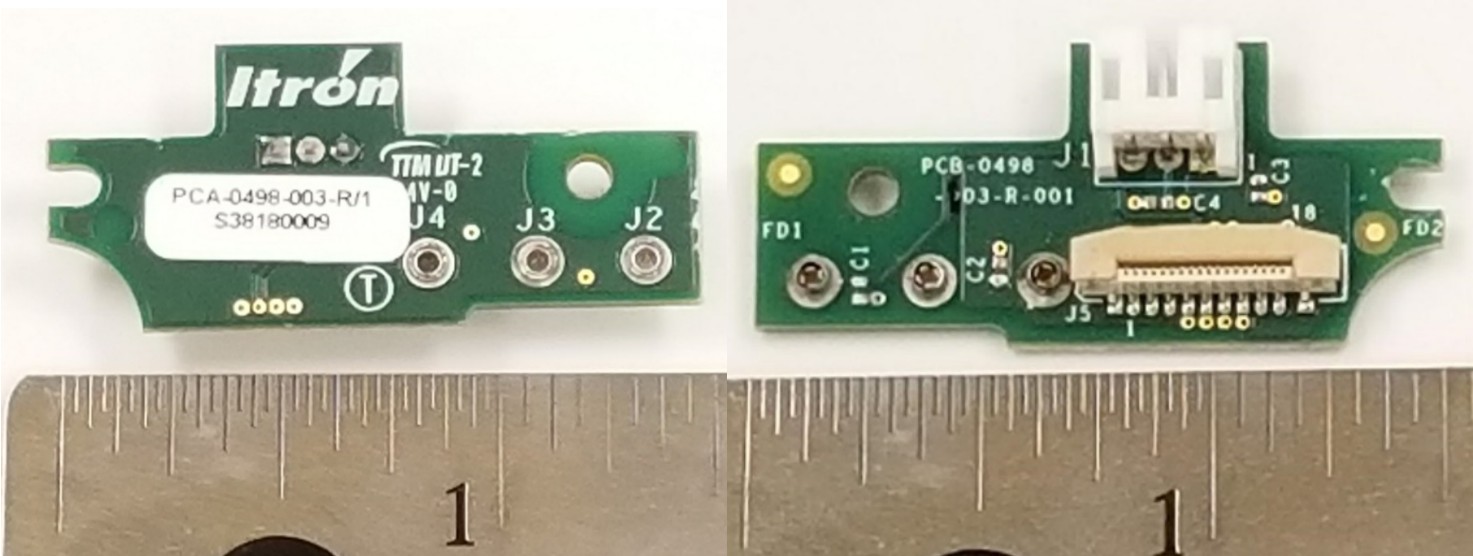
Communications Control Board - Top Side (all devices)



Communications Control Board - Bottom Side (all devices)



Top cap (all devices).



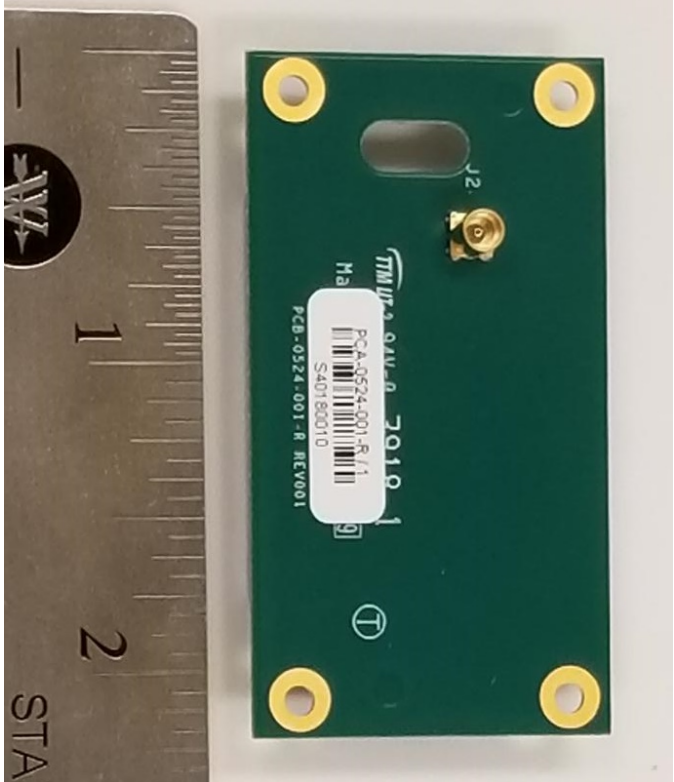
Battery Charger Interface Board - Top and Bottom sides (all devices)



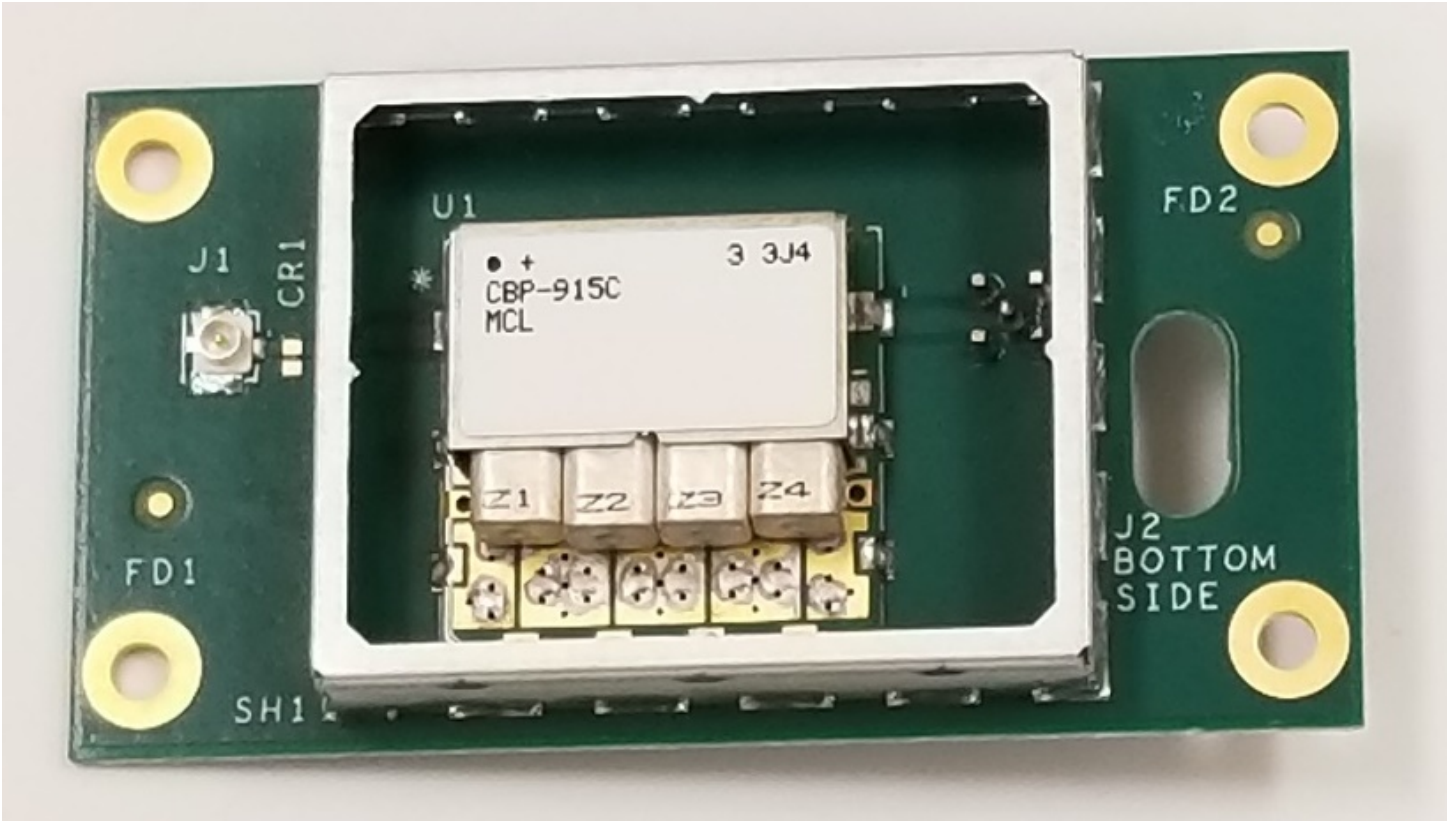
Bottom Cap (all devices)



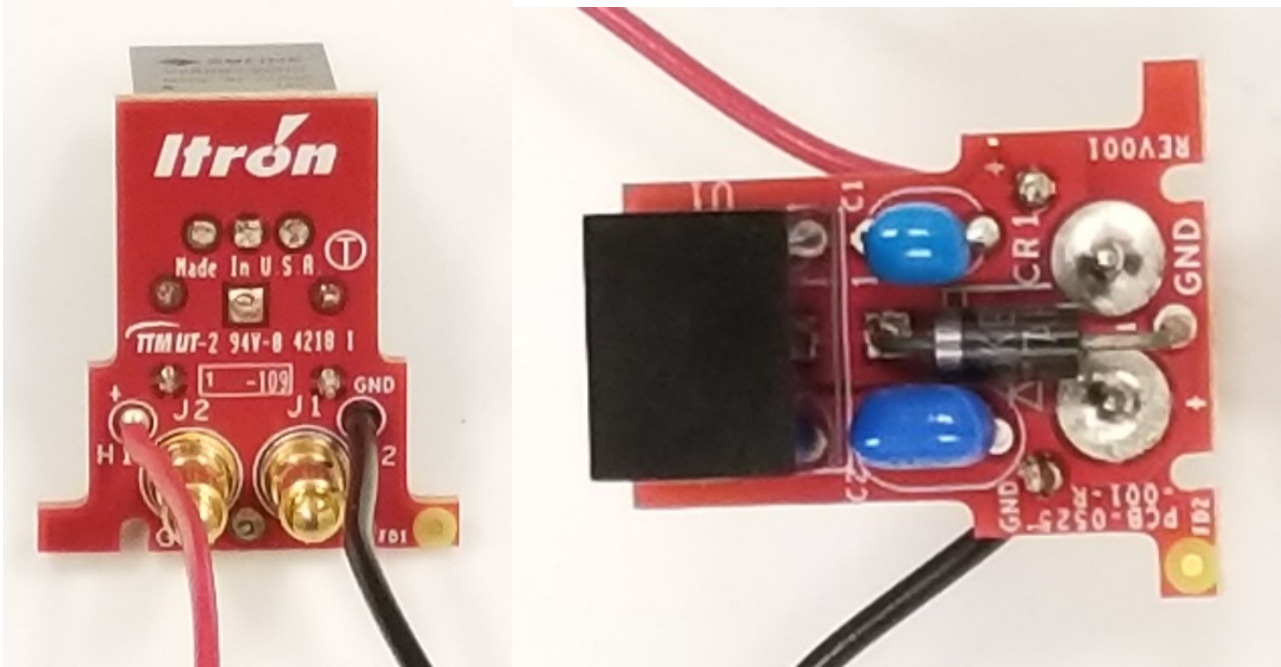
Battery (all devices)



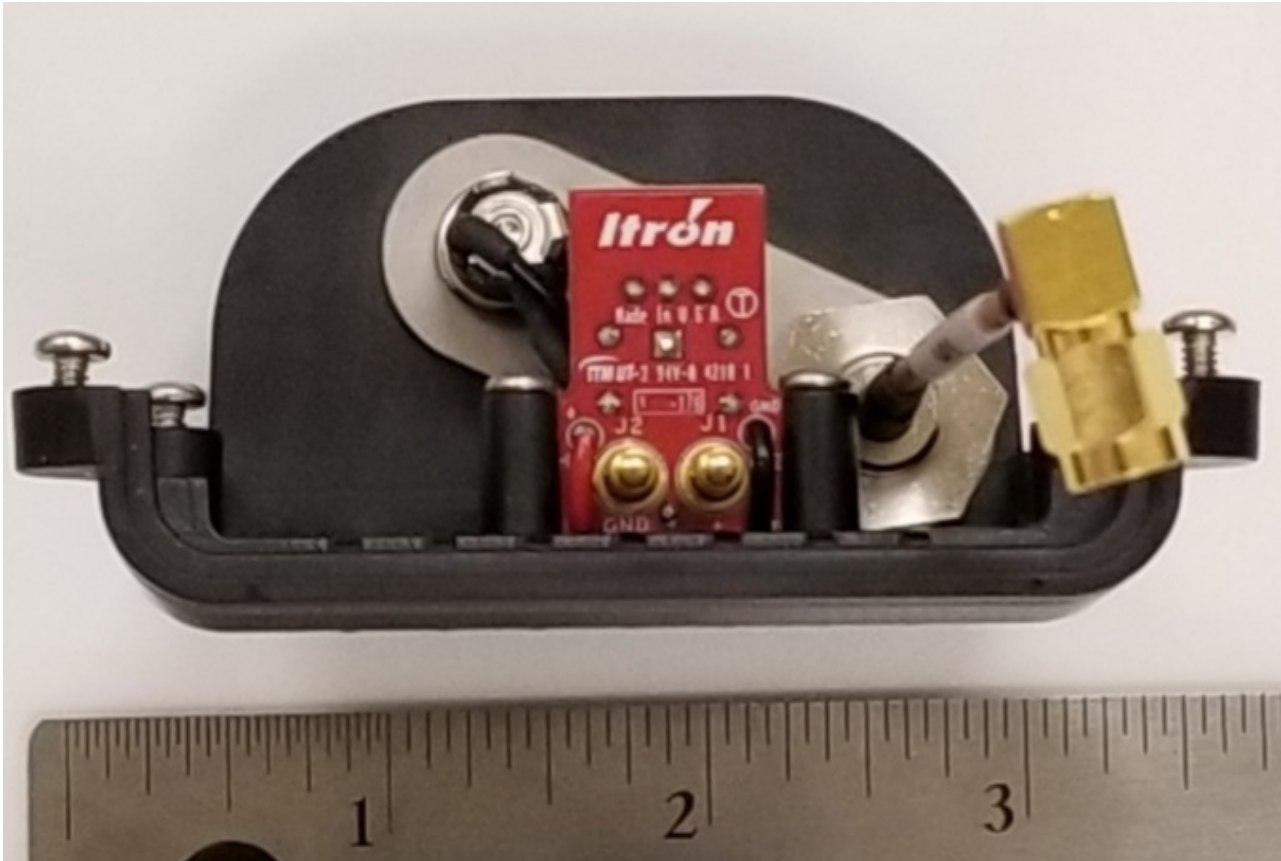
External Filter Board - Bottom and Top Sides (IMRB-EXT only)



External Filter Board - Top Side, shield removed



Charge Pin Board - Top and Bottom Sides (IMRB-EXT only)



In the base snap on feature (IMRB-EXT only)



More of the base snap on feature (IMRB-EXT only)