

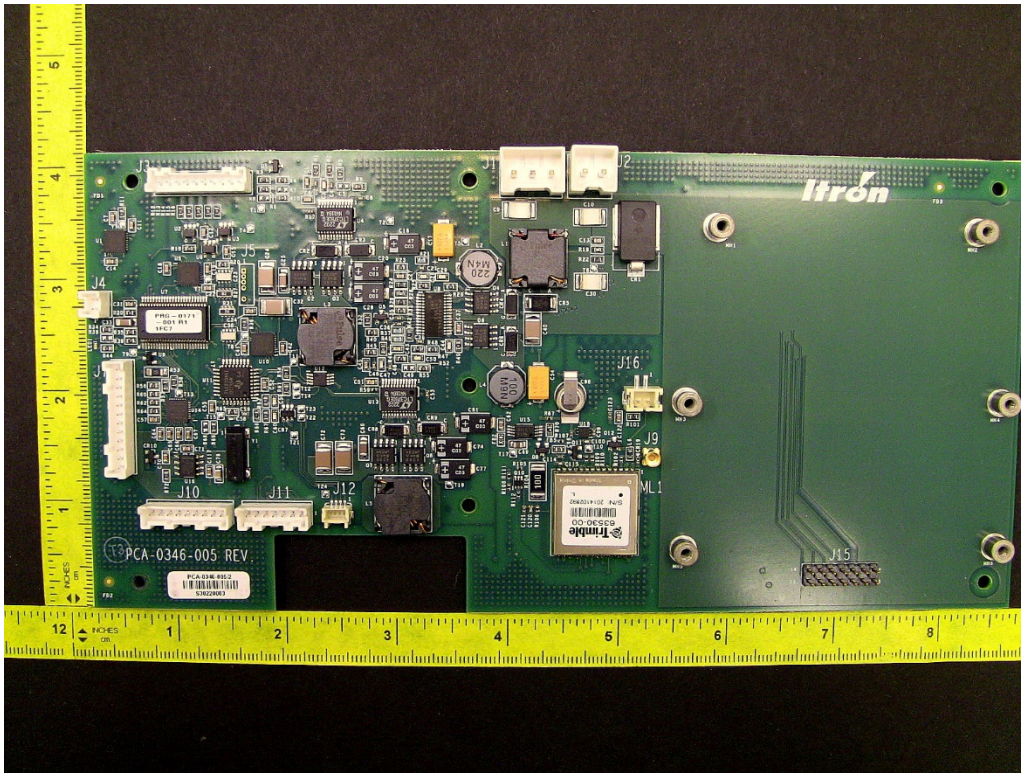
FCC ID: E09DCU5310C, IC: 864A-DCU5310C – Photos, Internal

Contents

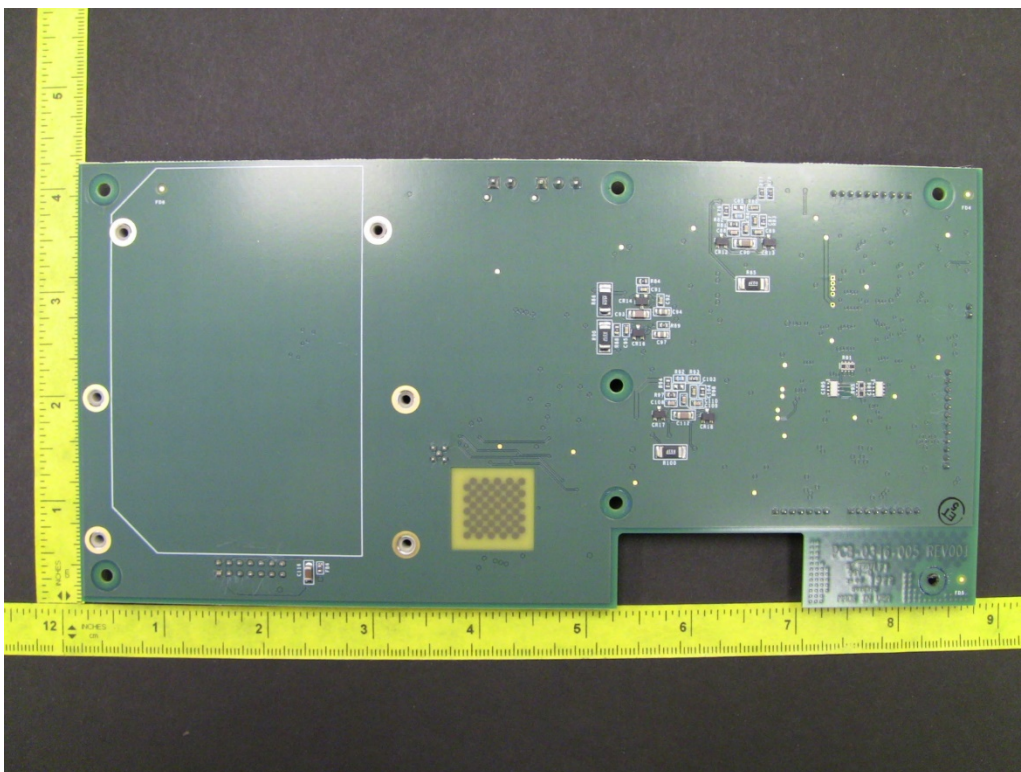
Common MC3C and MC3C1 Internal	2
1. MC3C / MC3C1: Internal - Power & USB Board Front.....	2
2. MC3C / MC3C1: Internal - Power & USB Board Back.....	2
3. MC3C / MC3C1: Internal - MAS TX Board Front.....	3
4. MC3C / MC3C1: Internal - MAS TX Board Back.....	3
MC3C Internal	4
5. MC3C: Internal - Dual Carrier Board Front (without SR Radios)	4
6. MC3C: Internal - Dual Carrier Board Back (without SR Radios).....	4

Common MC3C and MC3C1 Internal

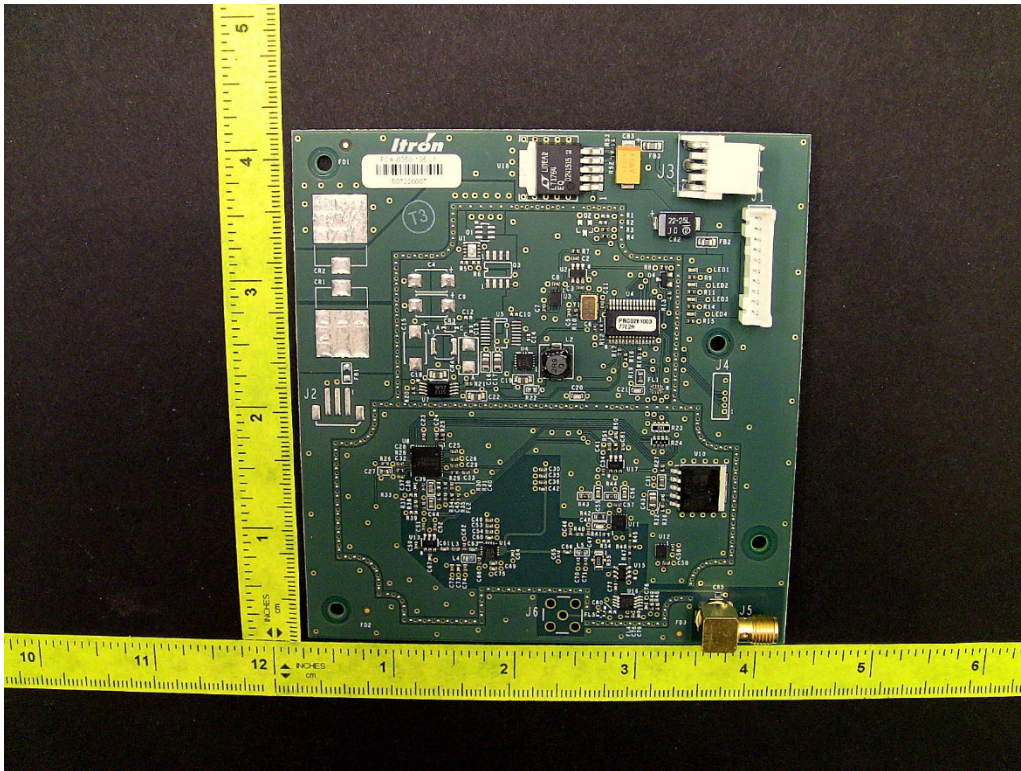
1. MC3C / MC3C1: Internal - Power & USB Board Front



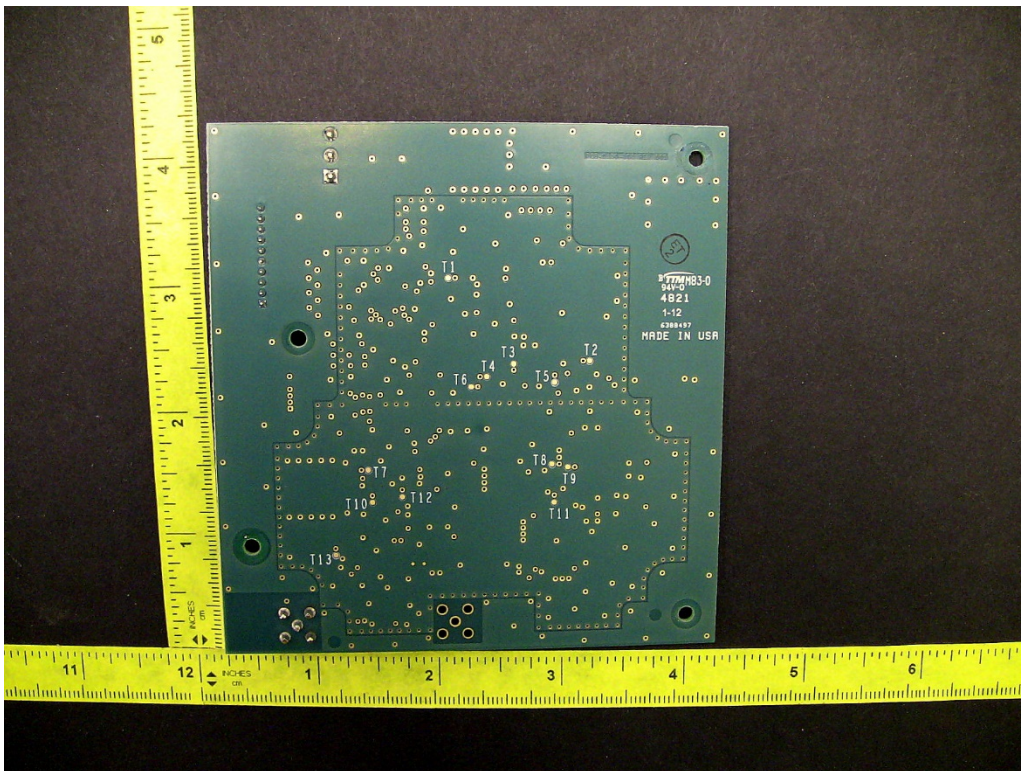
2. MC3C / MC3C1: Internal - Power & USB Board Back



3. MC3C / MC3C1: Internal - MAS TX Board Front

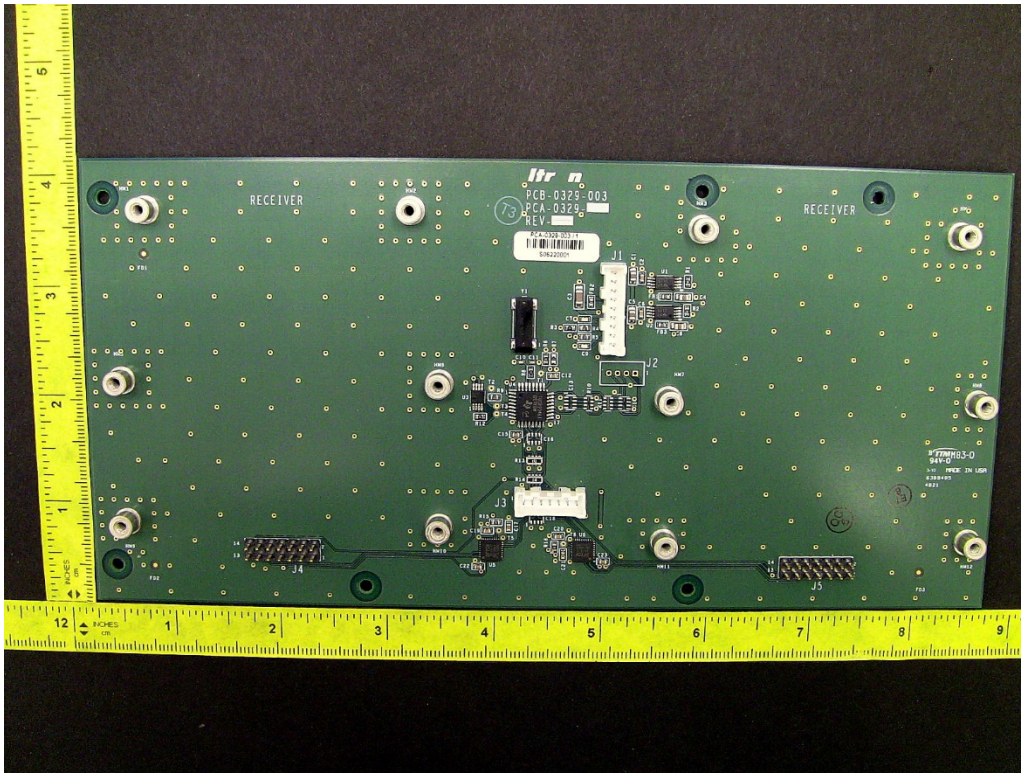


4. MC3C / MC3C1: Internal - MAS TX Board Back



MC3C Internal

5. MC3C: Internal - Dual Carrier Board Front (without SR Radios)



6. MC3C: Internal - Dual Carrier Board Back (without SR Radios)

