

CCU100TD Exhibit Photos – Antenna Configurations

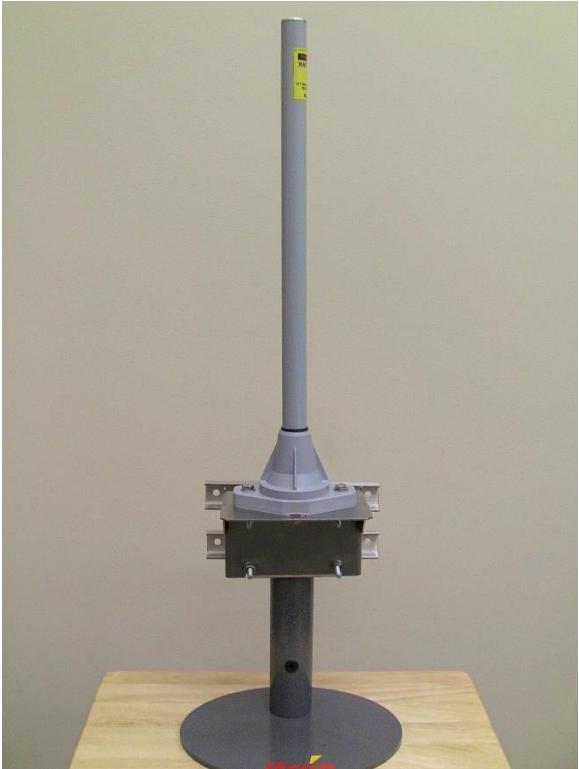
Contents

- 1. CCU100TD remote 8.15 dBi 900 MHz antenna2
- 2. CCU100TD remote 5.5 dBi 900 MHz antenna2
- 3. CCU100TD remote 5.15 dBi 900 MHz antenna3
- 4. CCU100TD remote GPS and WAN antennas3
- 5. CCU100TD internal 0.5 dBi 2.4 GHz ceramic chip antenna4

1. CCU100TD remote 8.15 dBi 900 MHz antenna



2. CCU100TD remote 5.5 dBi 900 MHz antenna



3. CCU100TD remote 5.15 dBi 900 MHz antenna

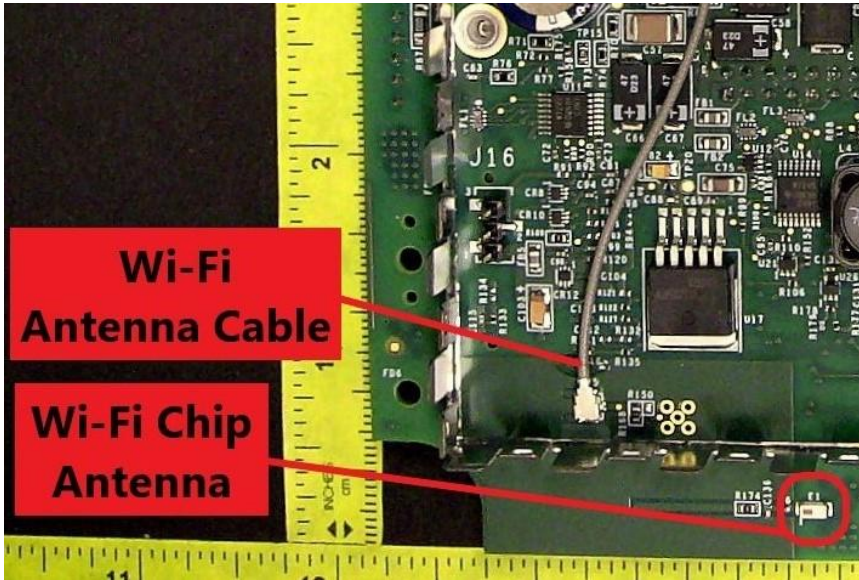


4. CCU100TD remote GPS and WAN antennas



Remote GPS (left) and WAN (right) antennas.

5. CCU100TD internal 0.5 dBi 2.4 GHz ceramic chip antenna



Detail of System Board back.