

## CCU100D and CCU100D REPEATER Exhibit Photos – Internal Unit

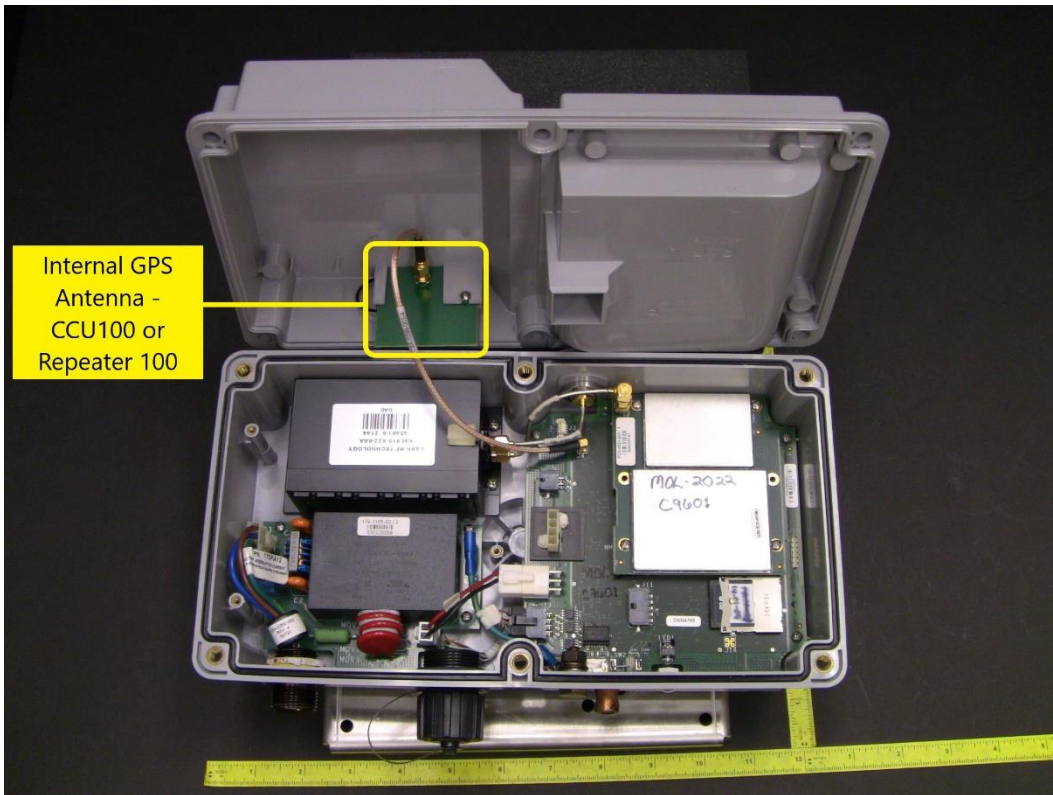
### Contents

1.	CCU100D unit, internal – RV50X Modem, Remote GPS.....	2
2.	CCU100D Repeater unit, internal – Internal GPS .....	2
3.	915 MHz SR Radio Board front, with shield covers installed .....	3
4.	915 MHz SR Radio Board front, with shield covers removed .....	3
5.	915 MHz SR Radio Board front detail .....	4
6.	915 MHz SR Radio Board back, with shield covers installed .....	4
7.	915 MHz SR Radio Board back, with shield covers removed .....	5
8.	915 MHz SR Radio Board back detail .....	5
9.	System Board front, with SR Radio Board attached.....	6
10.	System Board front, with SR Radio Board removed.....	7
11.	System Board front, detail 1.....	8
12.	System Board front, detail 2.....	8
13.	System Board back, with shield cover installed .....	9
14.	System Board back, with shield cover removed and SOM-LV module attached.....	10
15.	System Board back, with shield cover removed and SOM-LV module removed.....	11
16.	System Board back, detail 1 .....	11
17.	System Board back, detail 2 .....	12
18.	System Board back, detail 3 .....	12
19.	System Board SOM-LV module front .....	13
20.	System Board SOM-LV module back .....	13
21.	GPS Antenna Board front .....	14
22.	GPS Antenna Board back.....	14
23.	Power Supply Board front .....	15
24.	Power Supply Board back.....	15
25.	RV50X modem label .....	16

1. CCU100D unit, internal – RV50X Modem, Remote GPS



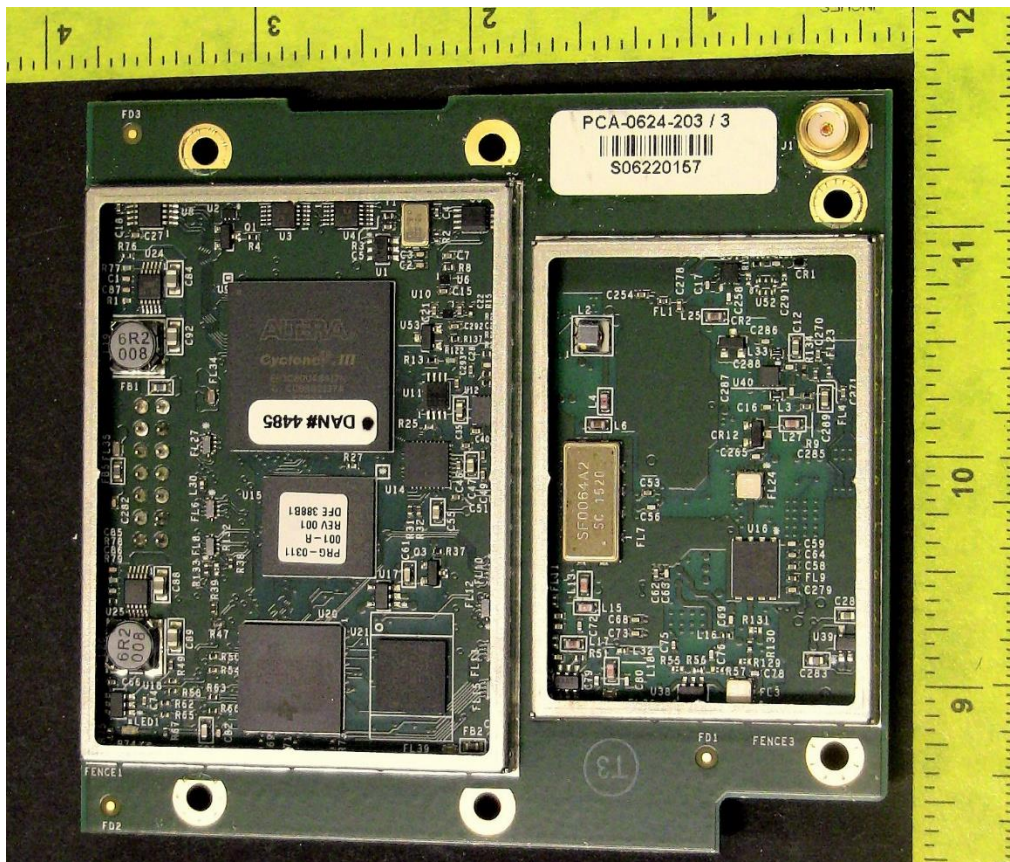
2. CCU100D Repeater unit, internal – Internal GPS



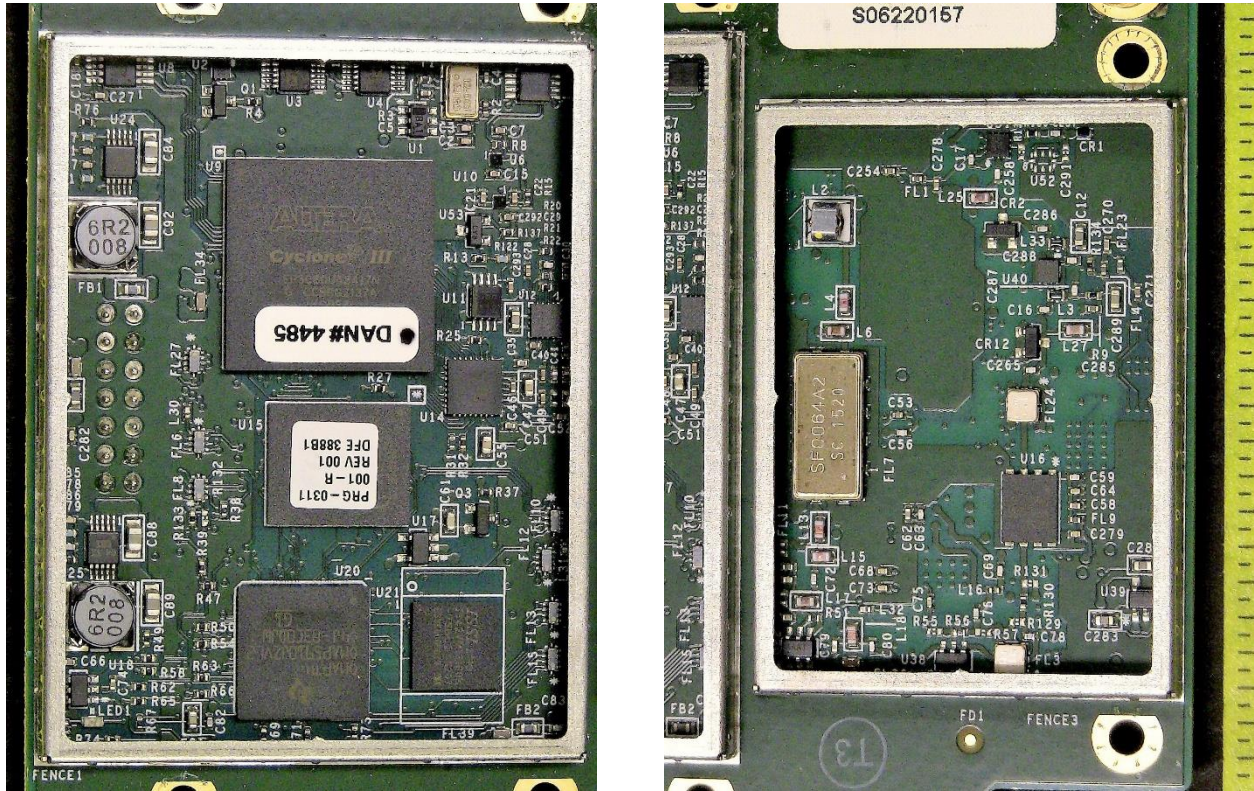
3. 915 MHz SR Radio Board front, with shield covers installed



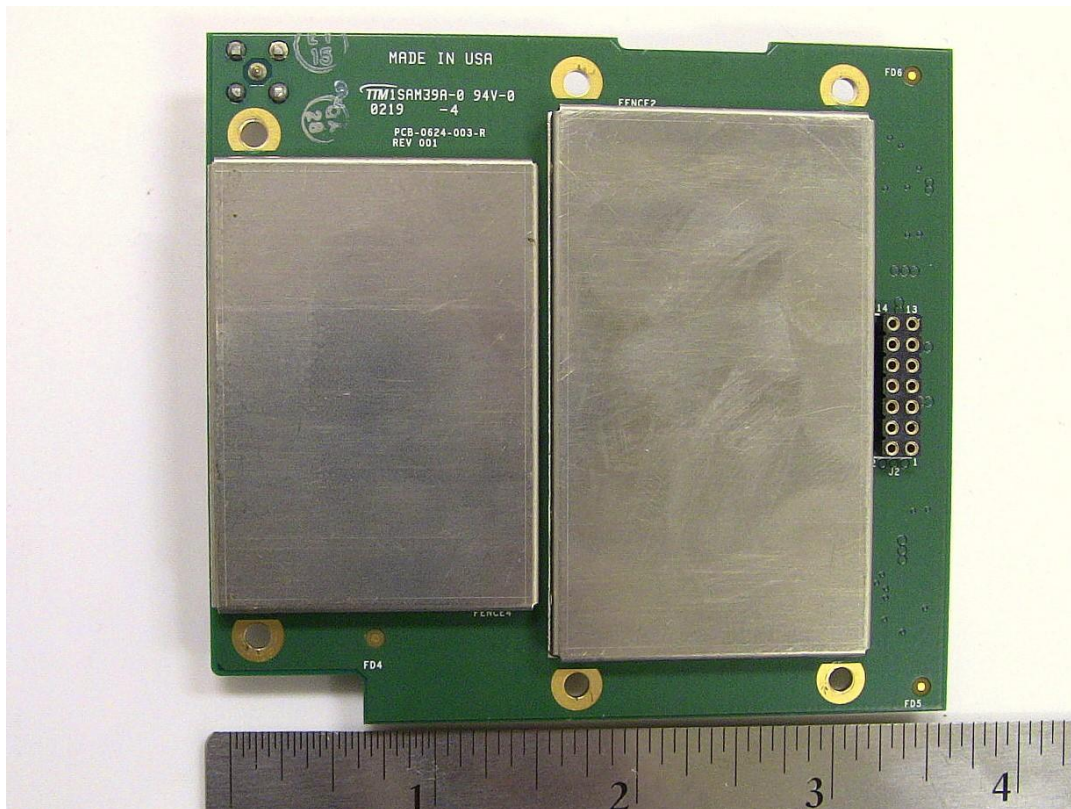
4. 915 MHz SR Radio Board front, with shield covers removed



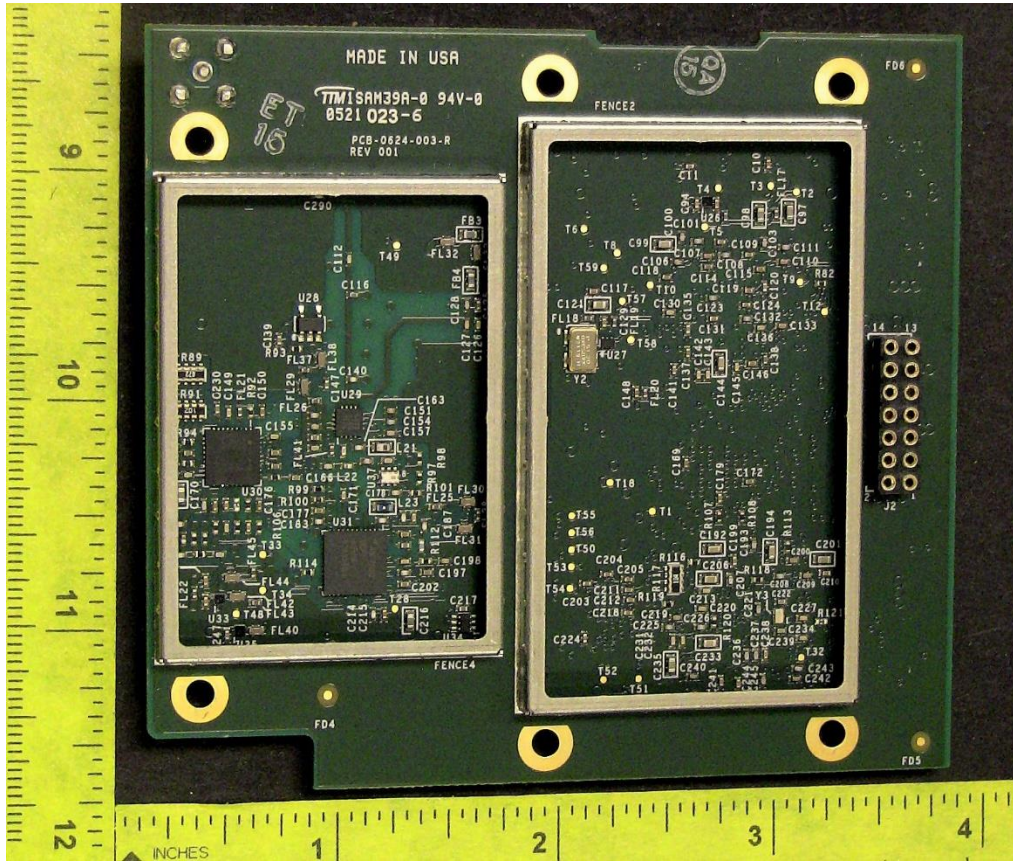
5. 915 MHz SR Radio Board front detail



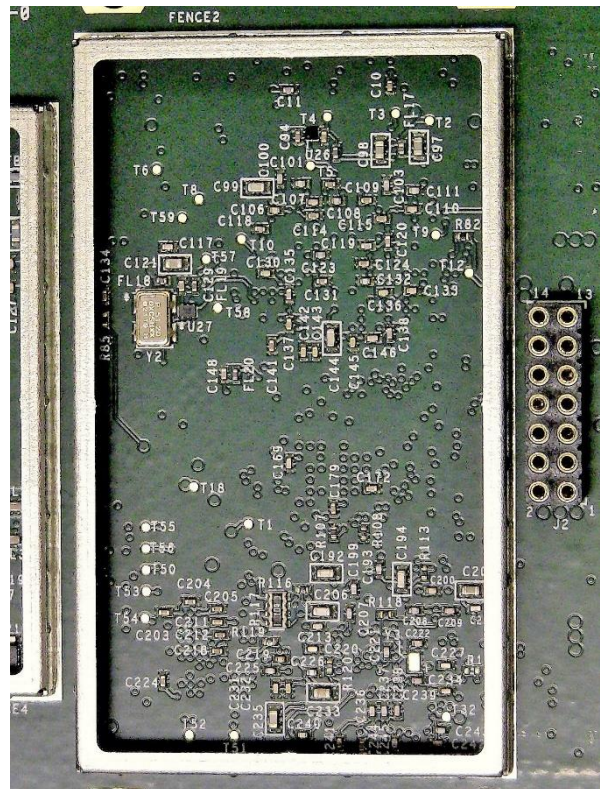
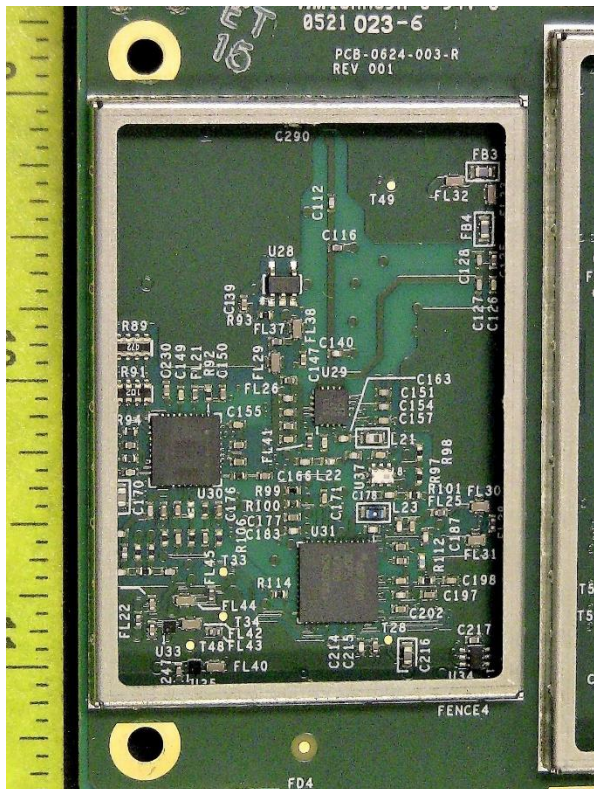
6. 915 MHz SR Radio Board back, with shield covers installed



7. 915 MHz SR Radio Board back, with shield covers removed



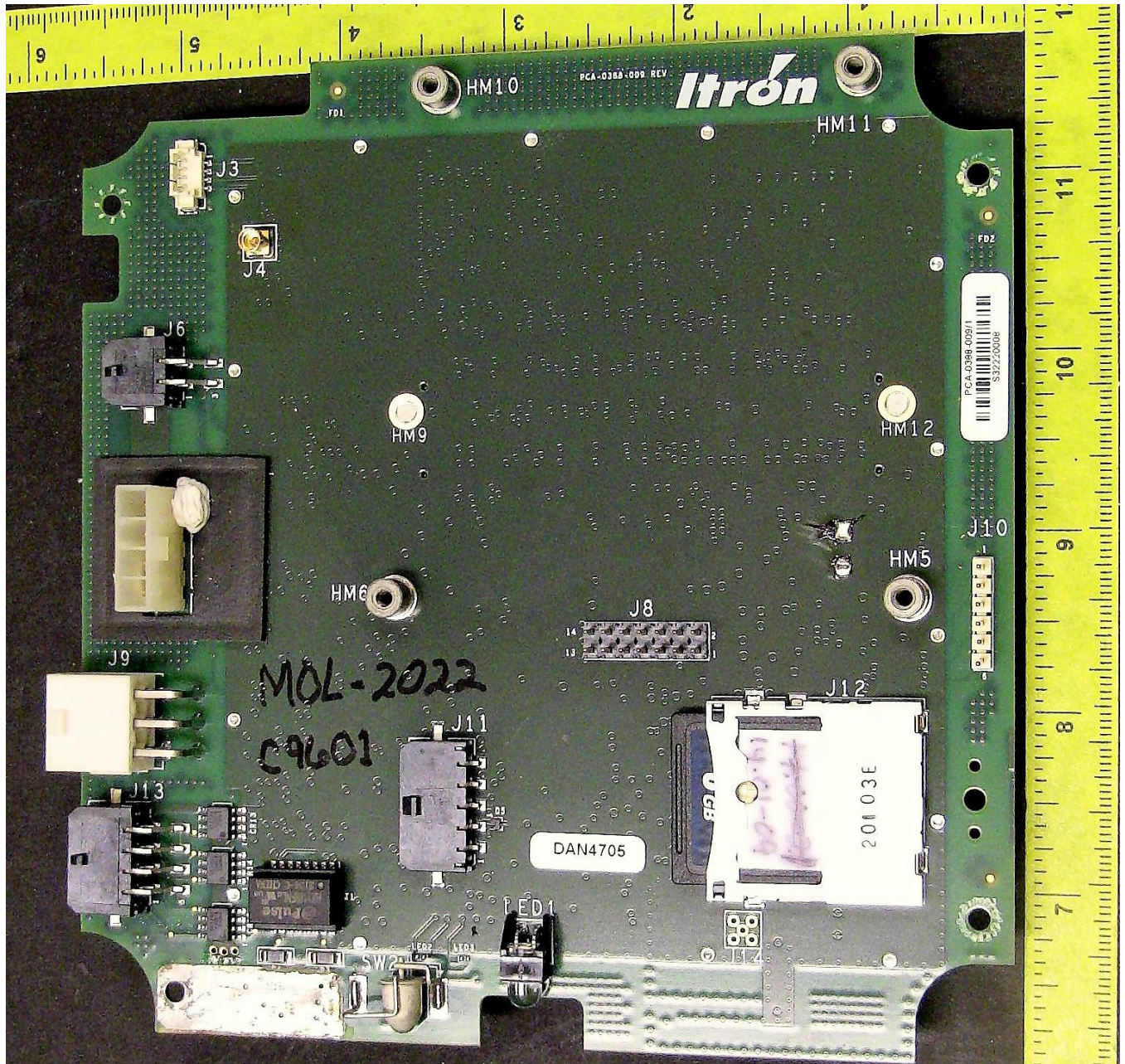
8. 915 MHz SR Radio Board back detail



9. System Board front, with SR Radio Board attached



10. System Board front, with SR Radio Board removed



11. System Board front, detail 1

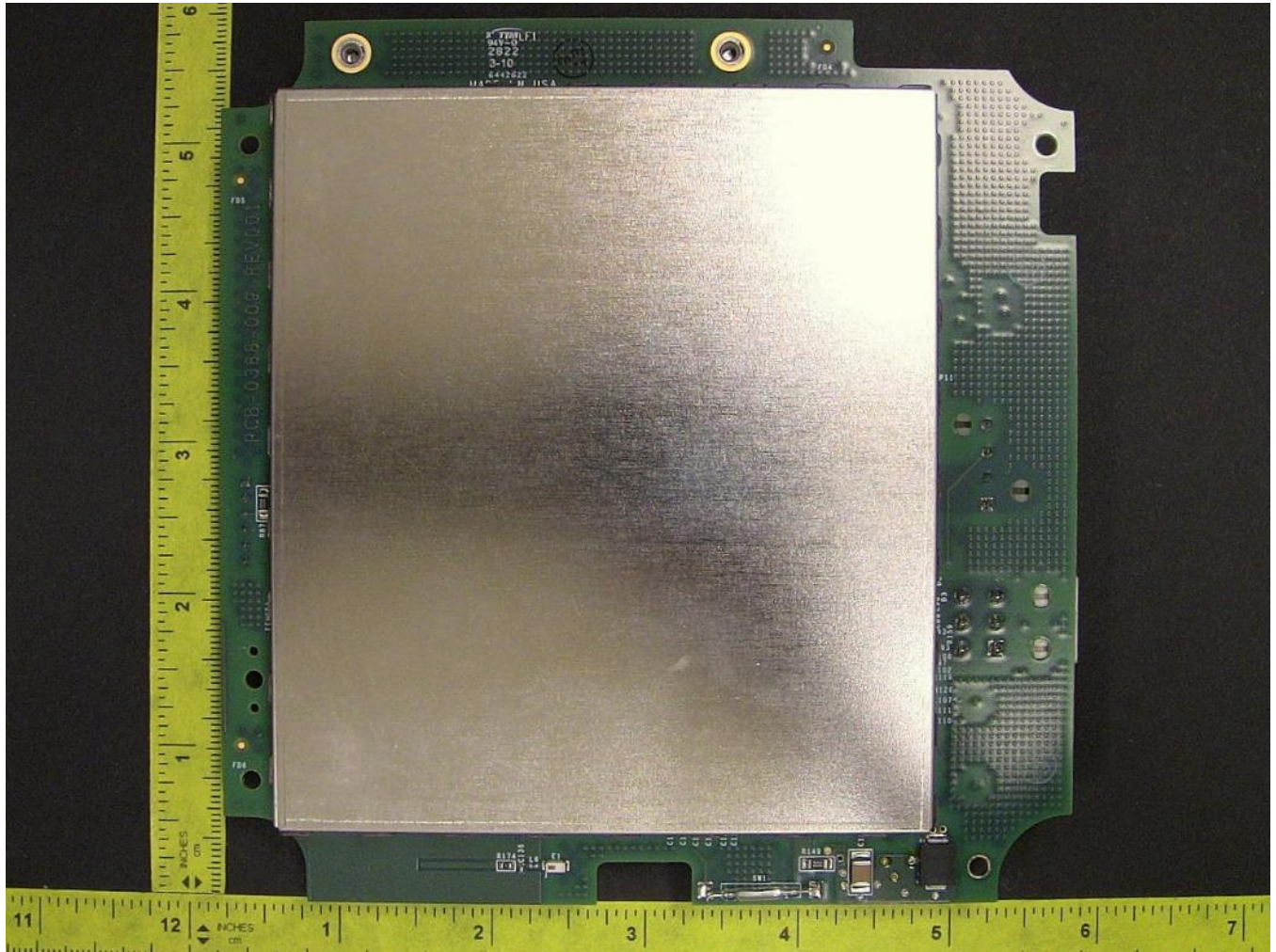


12. System Board front, detail 2

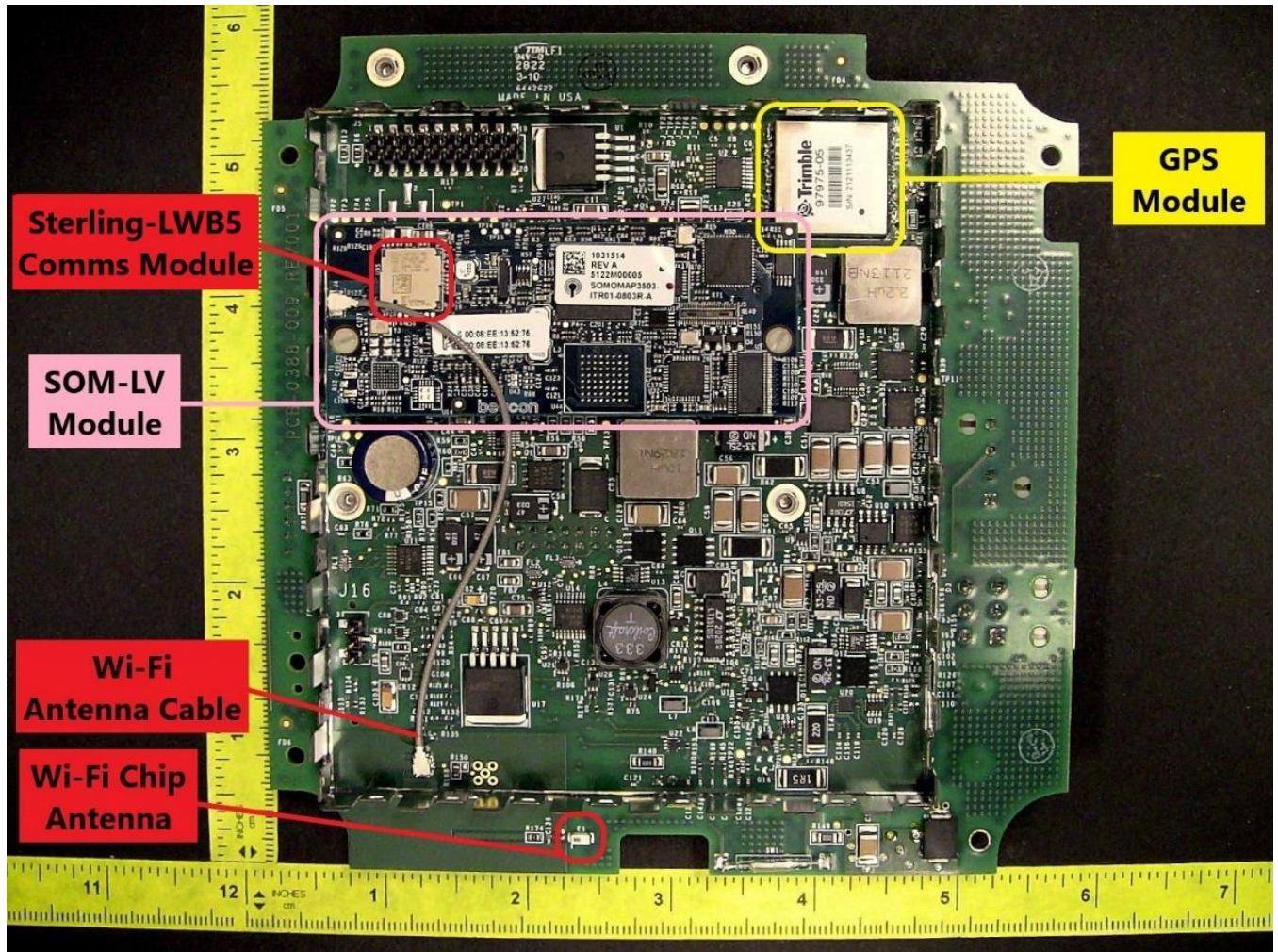




13. System Board back, with shield cover installed



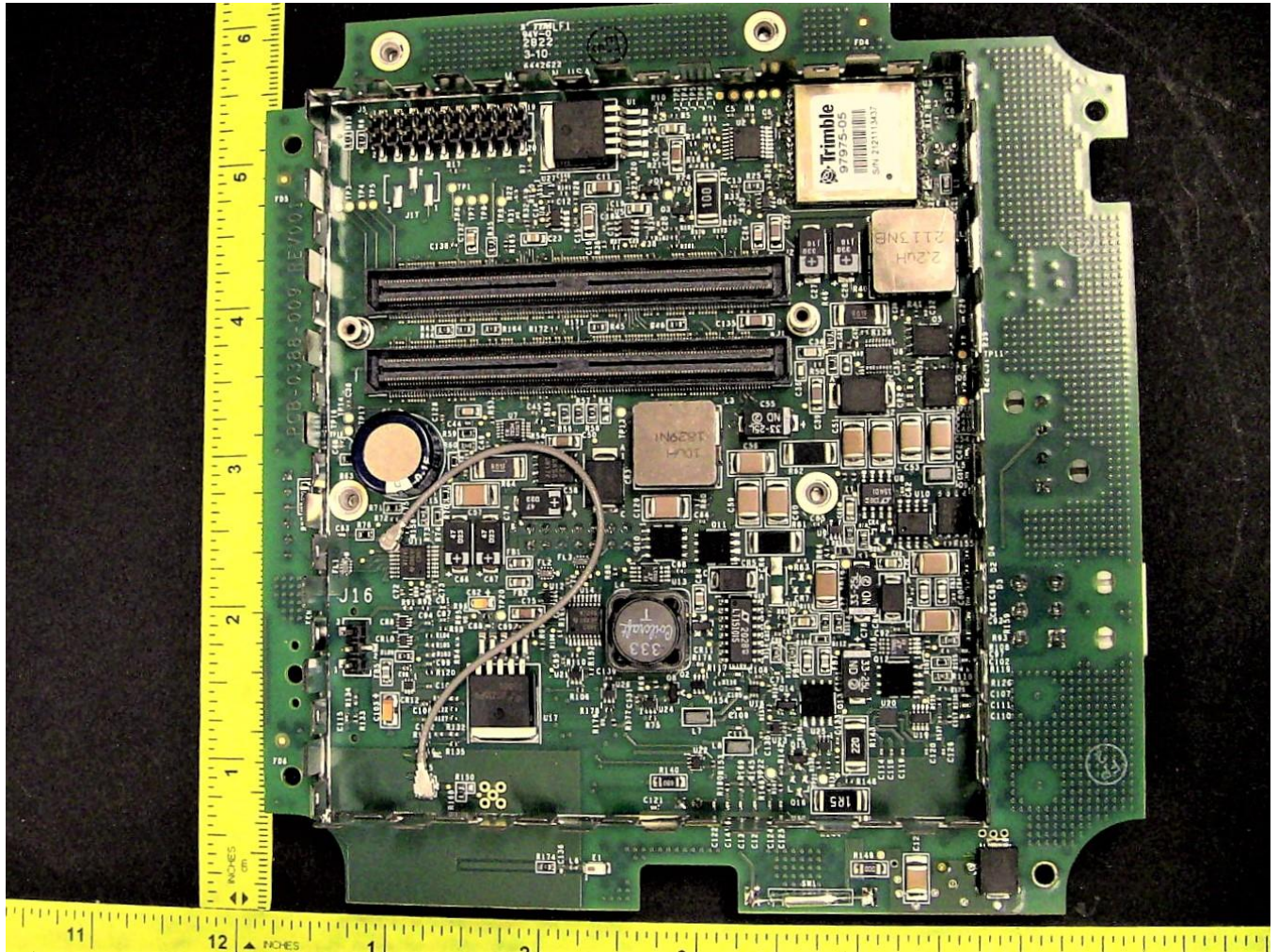
## 14. System Board back, with shield cover removed and SOM-LV module attached



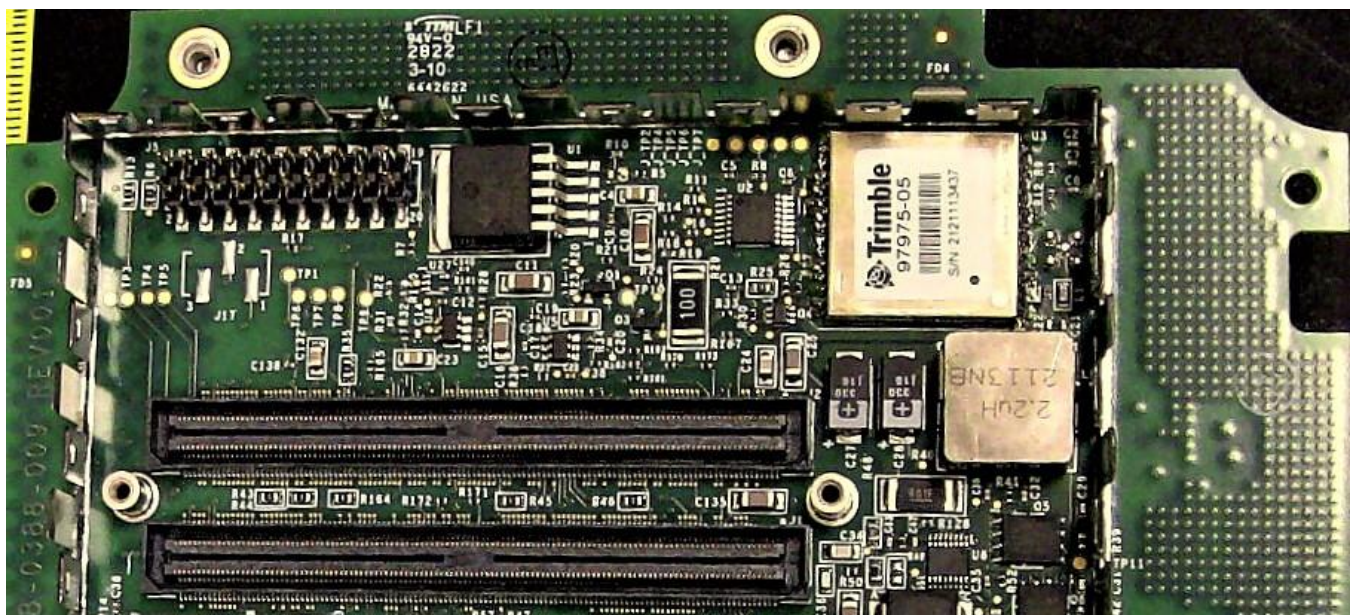
RF-related components on the System Board assembly:

- The Trimble® GPS module is soldered to the System Board.
- The Beacon® EmbeddedWorks (formerly Logic PD) OMAP35x SOM-LV module is mounted onto the System Board via mating connectors on the back of each board.
- The Sterling-LWB5 comms module that provides 802.11 Wi-Fi is soldered to the SOM-LV module.
- A cable connects the Sterling-LWB5 transceiver on the SOM to the Johansson 2.4 GHz ceramic chip antenna circuit that is soldered to the System Board.

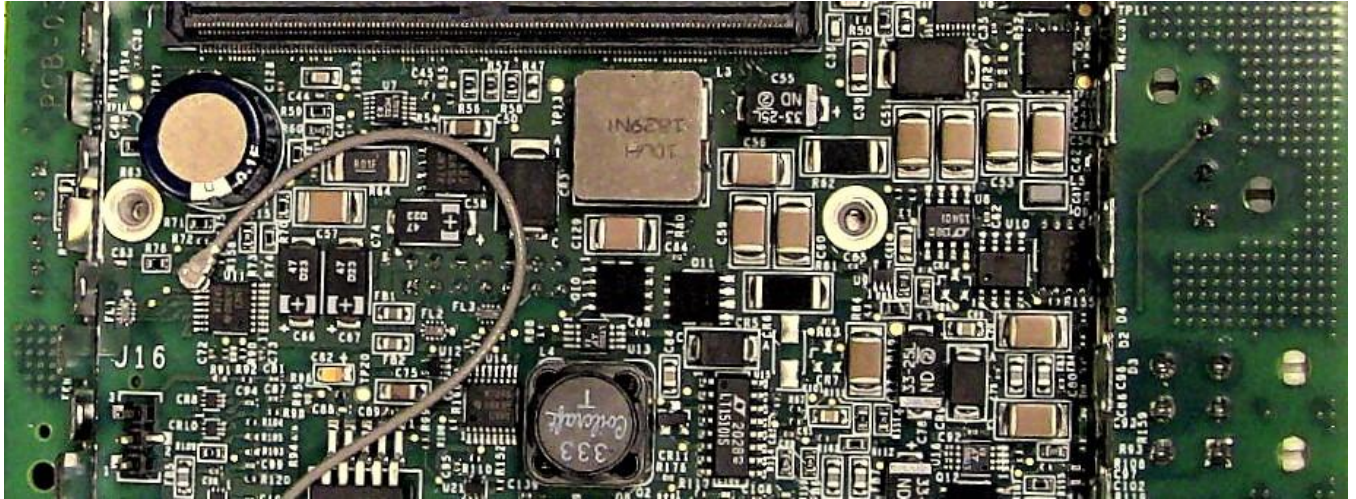
15. System Board back, with shield cover removed and SOM-LV module removed



16. System Board back, detail 1

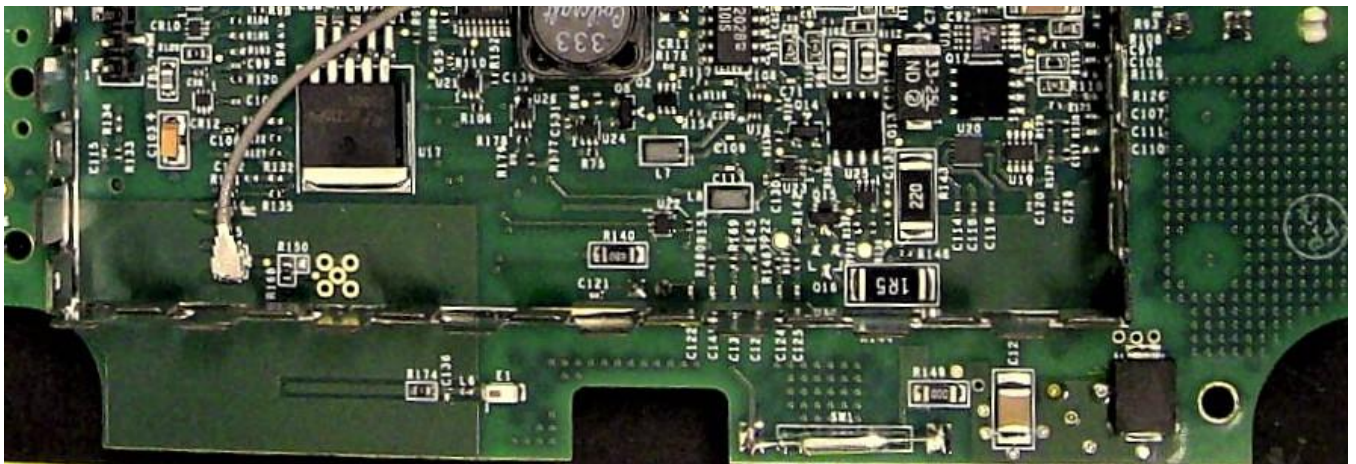


### 17. System Board back, detail 2

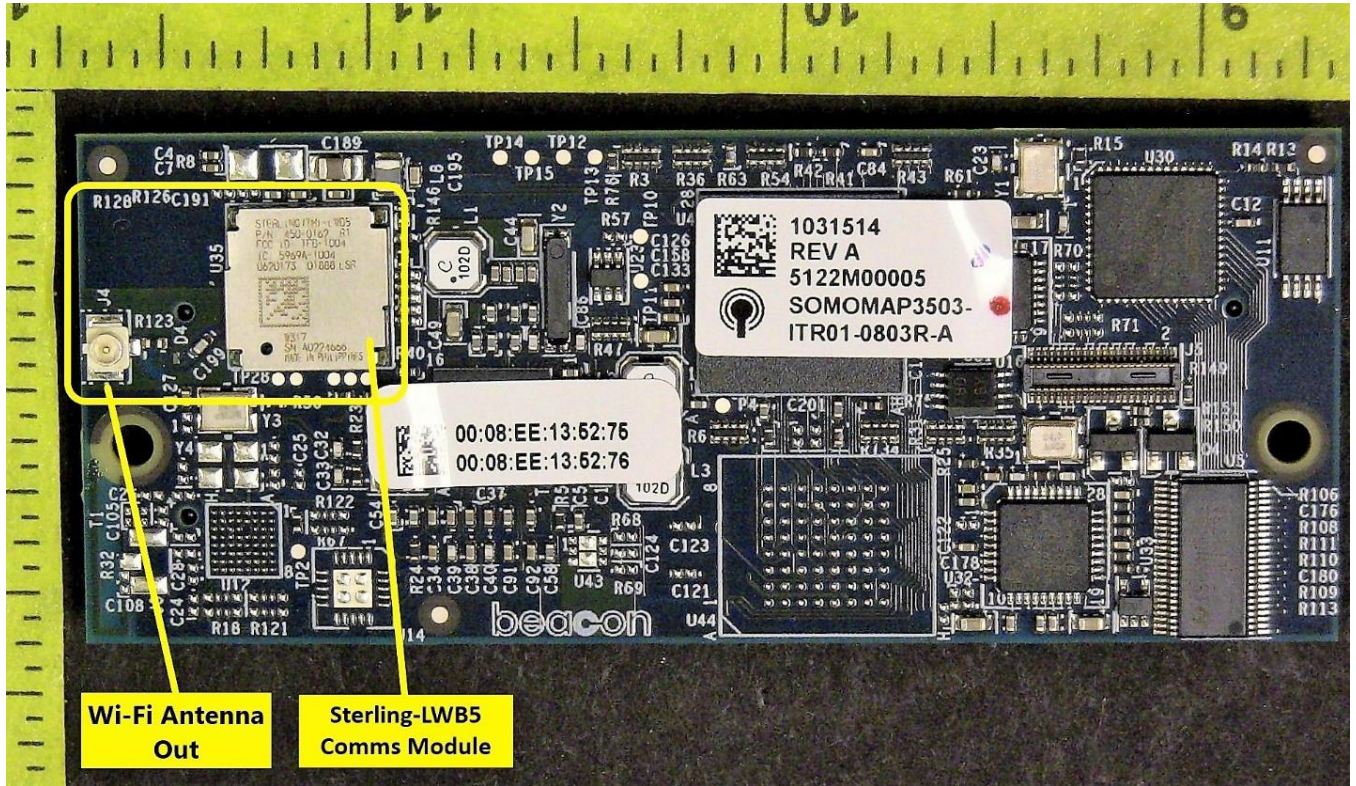


Note: The Wi-Fi antenna cable connector is shown disconnected from SOM-LV module.

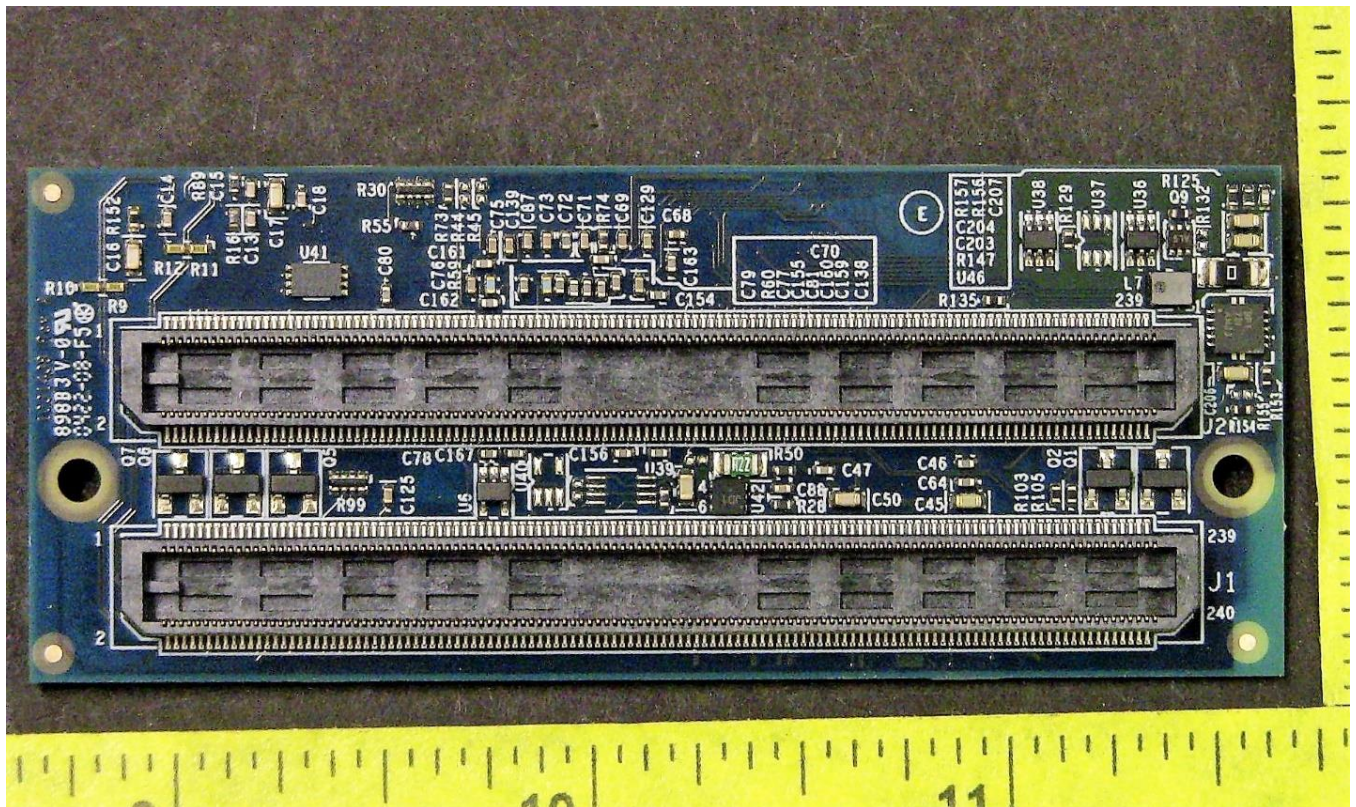
### 18. System Board back, detail 3



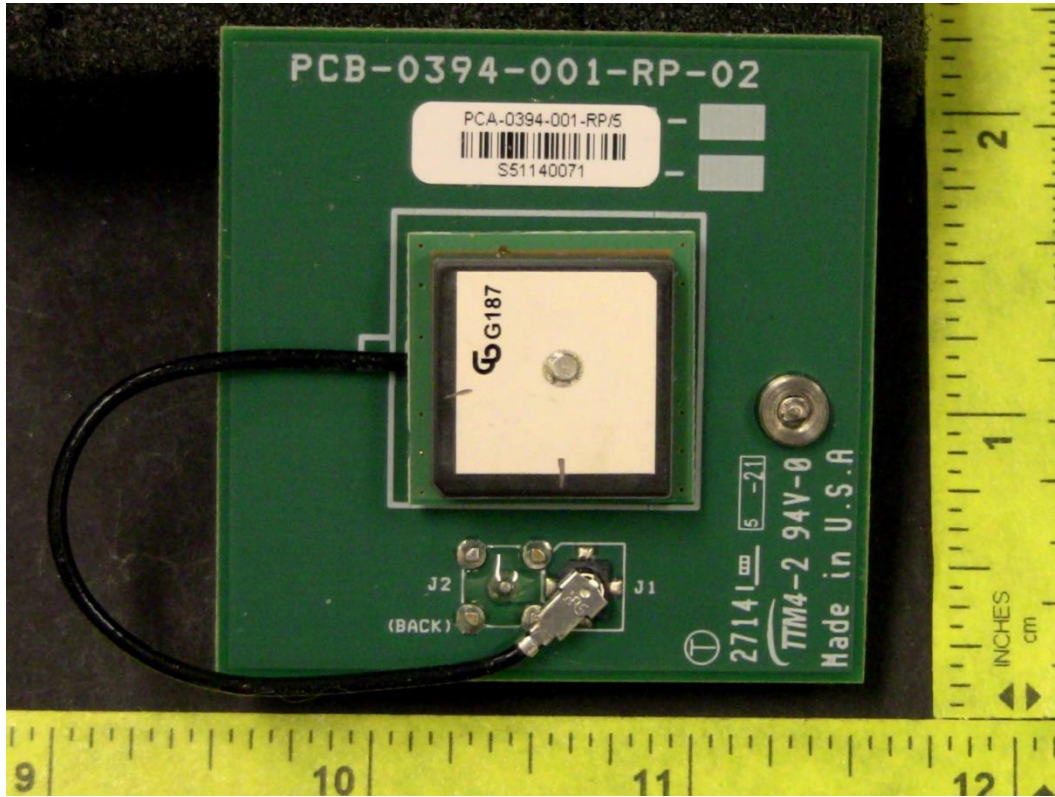
### 19. System Board SOM-LV module front



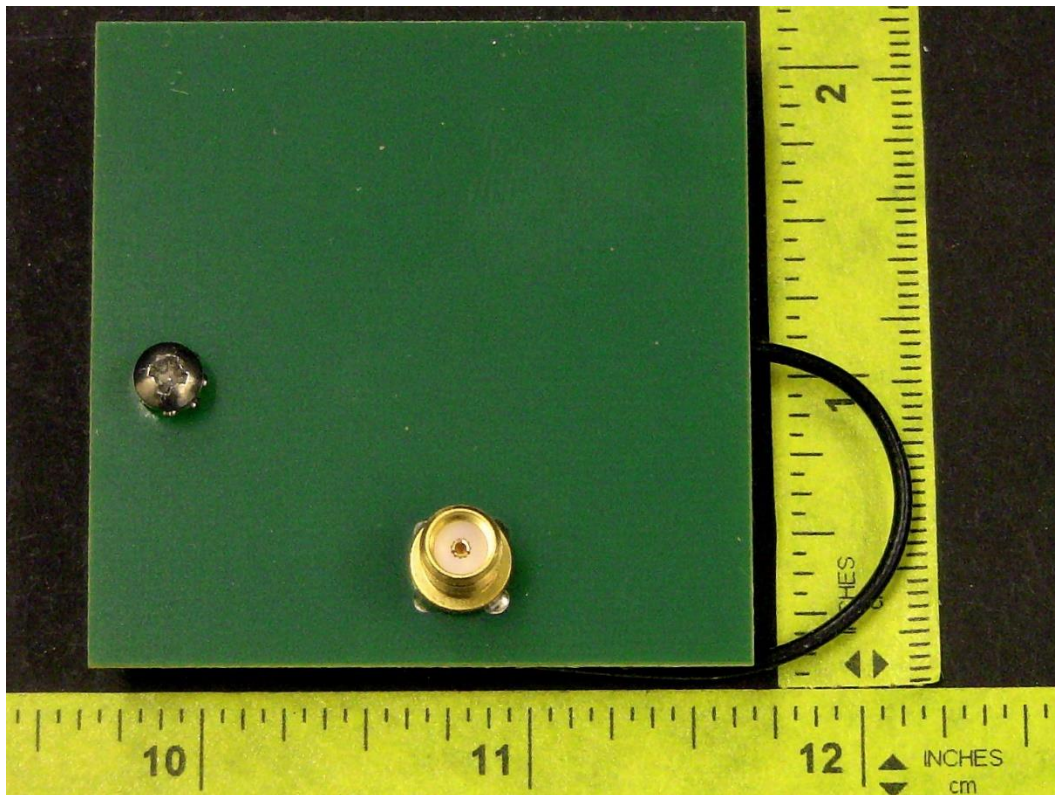
### 20. System Board SOM-LV module back



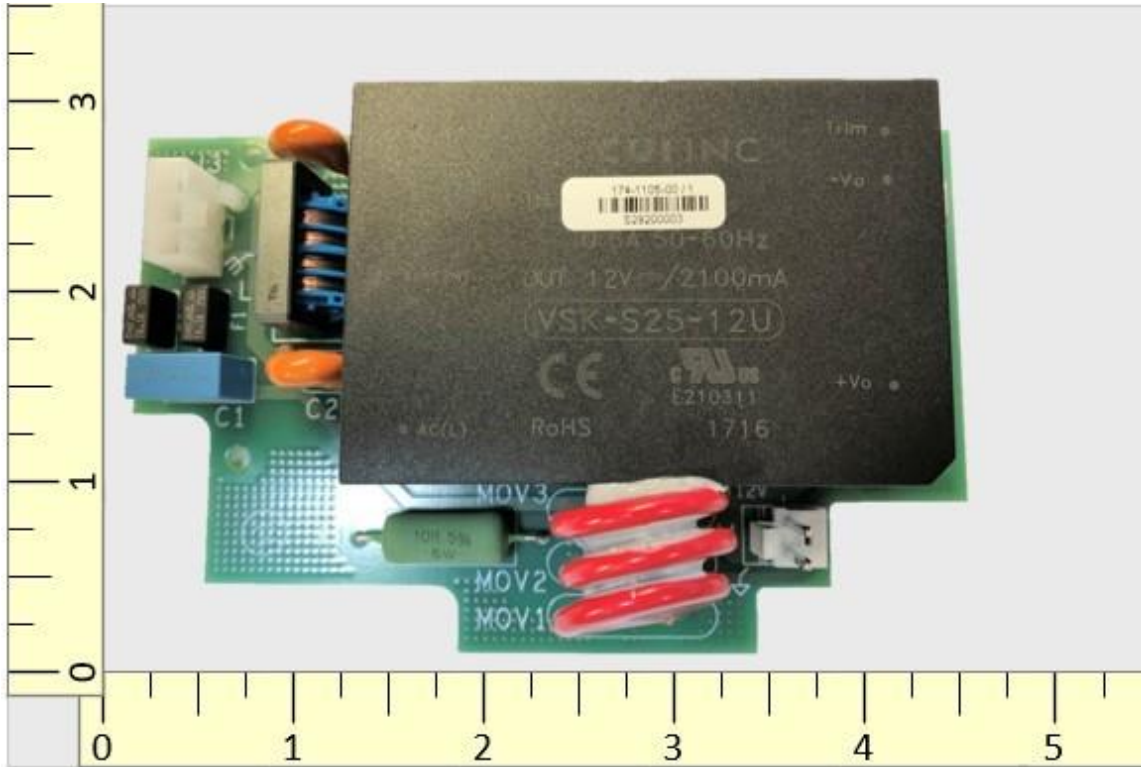
21. GPS Antenna Board front



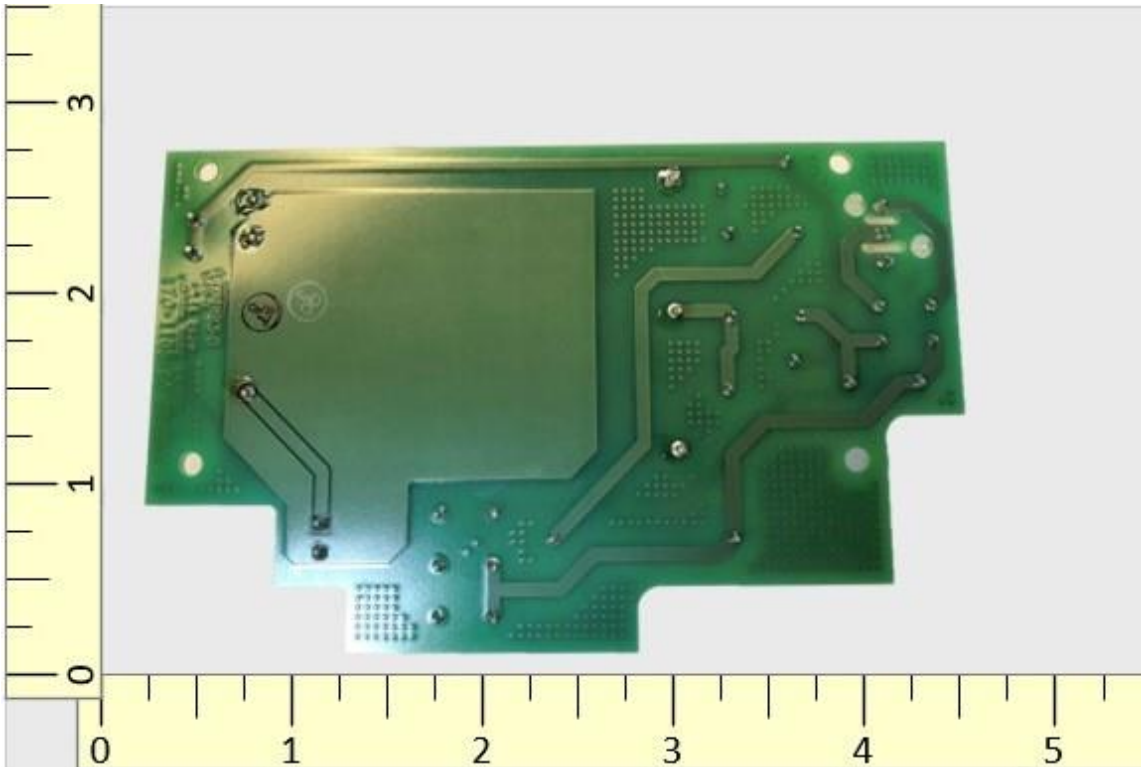
22. GPS Antenna Board back



### 23. Power Supply Board front



### 24. Power Supply Board back



25. RV50X modem label

