

The ESTeem Model 195Es Web Configuration Manager is an internal web server that will allow setup, monitoring and diagnostics of all operating parameters in the Model 195Es. The 195Es can be configured using any current web browser software such as Internet Explorer, Netscape or Mozilla.

LOGGING ON TO THE ESTeem WEB PAGE

1. Using your Web Browser connect to the Model 195Es Web Page with the IP Address that you have assigned it in Chapter 3.
2. You will now see the Log-on Menu on Figure 1. To enter the Model 195Es Top Menu you will need to log into the system with a User Name and Password.
3. For the User Name enter **admin** and press the Enter key (<Enter>). The User Name is defined at the factory and is not changeable.
4. Enter your Password and press the Enter key (<Enter>).



Figure 1: ESTeem Web Page Log-on Screen

If this is the first time the Model 195Es has been programmed and Password was not changed from the factory default values, proceed with the steps below to access the Configuration Menu.

- *The factory default Password is also admin. Enter admin for the Password and press the Enter key (<Enter>).*
 - *Note: All characters are lower case.*
5. After Log-in the next screen displayed will be the Model 195Es Top Menu page (Figure 2). This example screen shows the Top Menu screen.

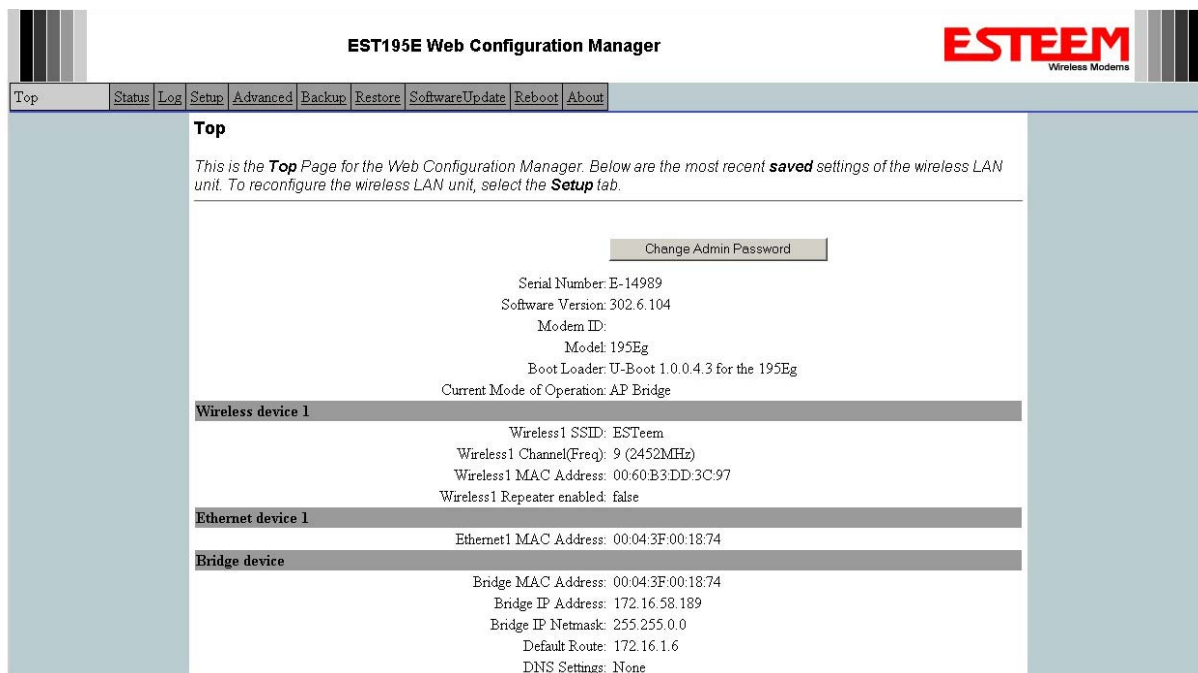


Figure 2: Top Menu Screen

Note: Throughout the Configuration Manager are Help Screens that can accessed for further information on each item.

WEB CONFIGURATION MANAGER SECTIONS

The following sections will describe the features in each of the main and sub menu items in the web pages. For step-by-step examples of how to configure the Model 195Es in different Modes of Operation, please refer to Chapter 5 – Example Configurations.

Top Menu

The Top Menu will be the default web page for the Model 195Es Web Configuration Manager (Figure 2). This section will display the current configuration summary for the Model 195Es and allow changing of the default password. This page will also display the Modem ID field that can be used to easily identify the 195Es you are programming. This Modem ID field can be set to any text combination for example, location name, GPS coordinates or addresses.

Setting the Modem ID

1. The Modem ID field can be adjusted under the *Global Variables* of the Advanced Menu tab. Select Global Variables and press the *Next* button. Figure 3 will be displayed.
2. Scroll to the bottom of the Global Variables window and enter the text you would like displayed in the Modem ID field (Figure 4). When complete, press the *Save Settings* button and the *Commit Changes* button on the next screen to save the name to the 195Es.

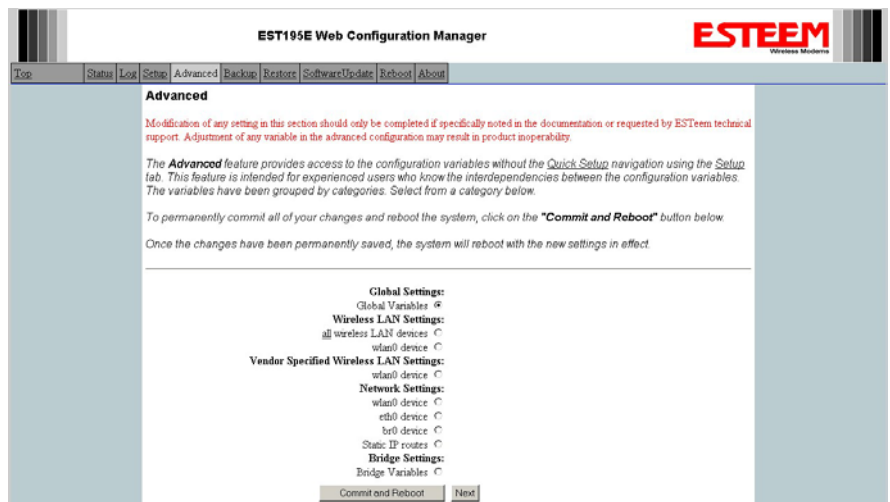


Figure 3: Global Variables Screen

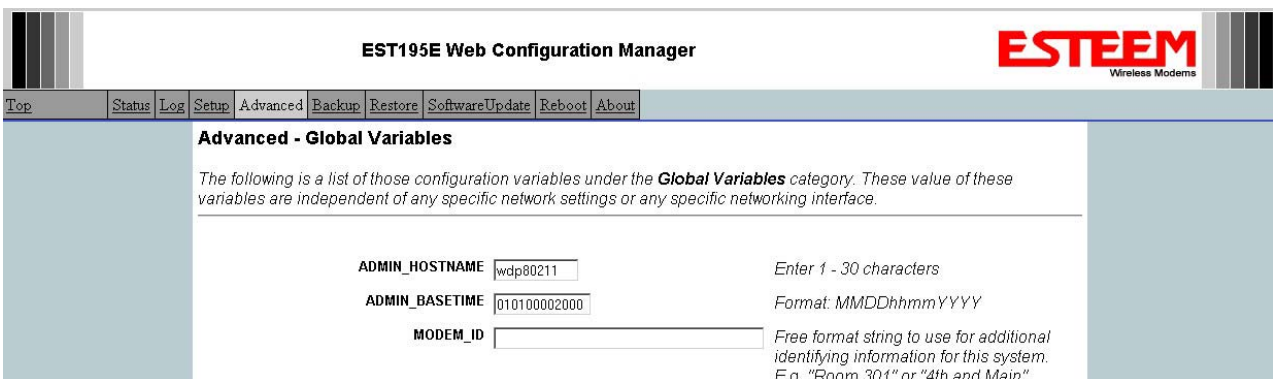


Figure 4: Modem ID Field in Global Variables Screen

Status Menu

The Status Menu provides a summary of the current mode of operation, system time, processor usage and status of the communication links to other wireless devices. An example is shown below in Figure 5. Most of the communication troubleshooting is done in this section of the Web Configuration Manager.

EST195E Web Configuration Manager

ESTEEM
Wireless Modems

Top Status Log Setup Advanced Backup Restore SoftwareUpdate Reboot About

Status: Summary

This is a summary of the status of the overall system. Most of the source data for this display is also accessible through the "System Details" of the "Log" tab.

Common Status

System Mode: AP Bridge
Current System Time: Mon, 12 Jun 2006 09:59:01
System Temperature: 134446952 C, 0 F
Up Time: 0 days, 00:00:55

CPU/Memory Status

CPU Usermode(%): 5
CPU Kernelmode(%): 4
CPU Idle(%): 91
CPU Interrupts per Second: 32
Pageable Memory Total: 14404
Pageable Memory Used: 10588
Pageable Memory Free: 3816
Number of Processes: 26

Wireless device 1 Status

[View Peer Table](#)
[View Global Counter Details](#)
SSID (hex): 45:53:54:65:65:6d
SSID (text): ESTEem
MAC Address: 00:04:3F:00:09:66
Wireless Repeater enabled: true
Associated Stations: 0
Rx Bytes: 4444
Rx Frames: 60
Rx Frame Errors: 0
Tx Bytes: 8228
Tx Frames: 101
Tx Errors: 59
Tx Drops: 42

Ethernet device 1 Status

Ethernet MAC Address: 00:04:3F:00:09:64
Rx Bytes: 4059
Rx Frames: 37
Rx Frame Errors: 0
Tx Bytes: 24572
Tx Frames: 91
Tx Errors: 0
Tx Drops: 0

Figure 5: Status Screen

The Counter Details submenu will summarize all transmitted and receive data packets for the Model 195Es (Figure 5).

System Log Screen

The Log Screen is a trouble-shooting tool that shows the current log of Model 195Es system messages. See Figure 7. The System Details button will display a more detailed system diagnostics that may be requested by ESTeem technical support.

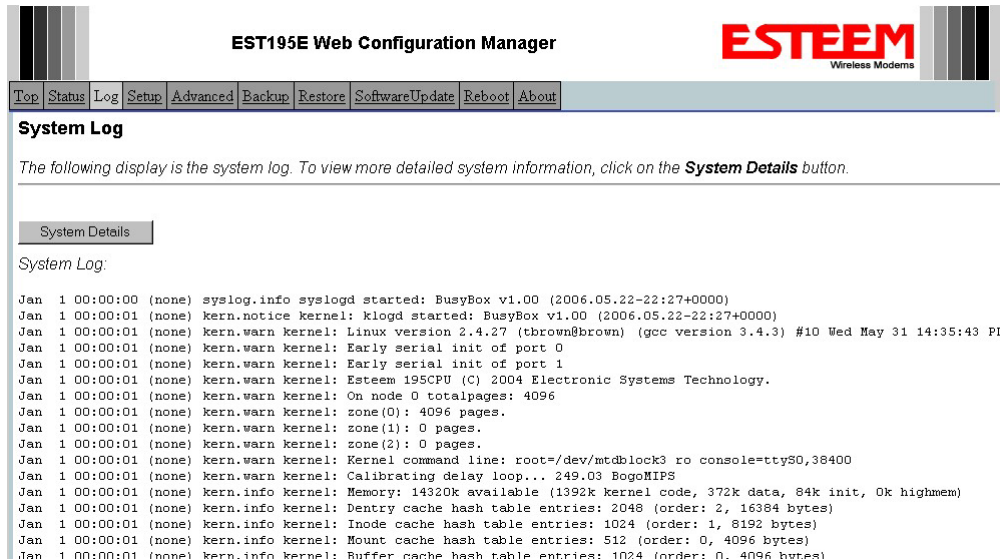


Figure 7: System Log Screen

Setup Screen

The Setup screen allows the step-by-step configuration of the Model 195Es. Please see Chapter 5 for complete description on System Setup menu and examples for system configurations. See Figure 8.

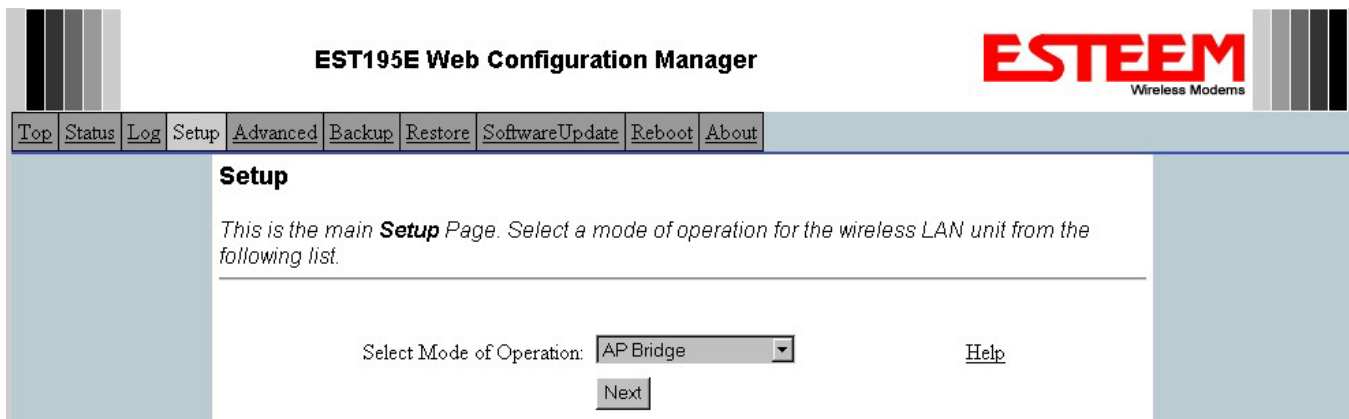


Figure 8: Setup Screen

Advanced Configuration Screen

The Advanced screen allows the user to access all configuration parameters. The parameters are grouped based upon their variable. **It is recommended that only advanced users of the Model 195Es enter this section unless instructed by ESTeem technical support.** See Figure 9.

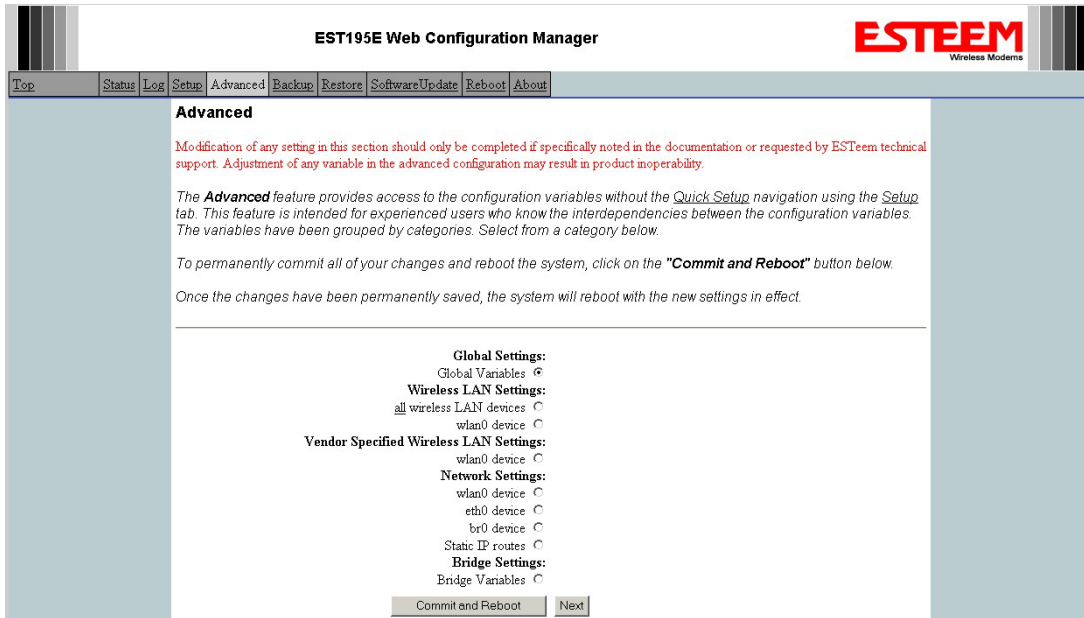


Figure 9: Advanced Features Screen

Backup Screen

The Backup Screen saves the current configuration in the Model 195Es to a file on the computer or network. See Figure 10. Pressing the Backup Button will create a configuration file that can be saved to the computer. This saved file can then be later opened, if necessary, by the Restore menu to quickly replace a Model 195Es with a spare modem.

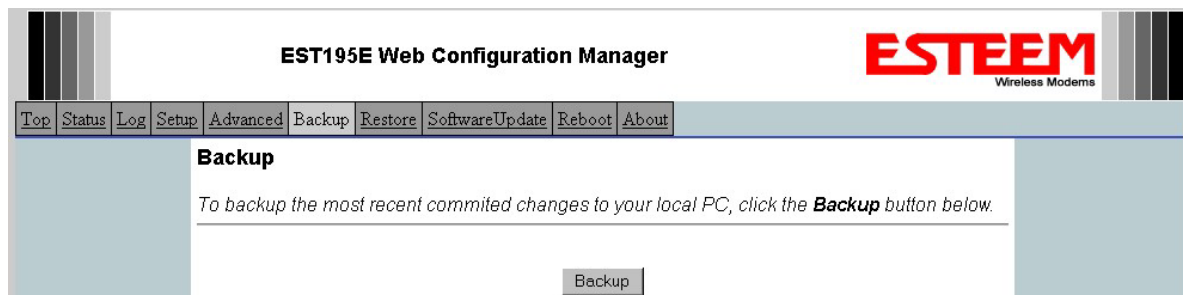


Figure 10: Backup Screen

Restore Screen

The Restore screen is used to restore the 195Es to factory defaults, return to the last saved configuration or to access the configuration files that were backed up to the computer. See Figure 11.

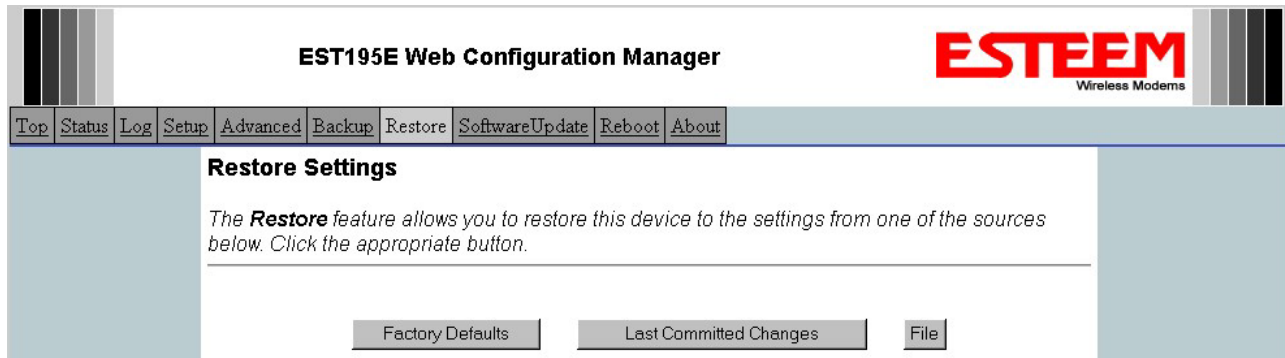


Figure 11: Restore Setting Screen

Factory Default – Returns the Model 195Es to all factory default values.

Last Committed Changes – This button will remove any changes to the modem that have been done since the last committed changes. The last committed changes will be read from the Flash file and reset in the Model 195Es.

File – Pressing this button will bring up a selection of where the restore file was saved during the Backup (Figure 12). Select “Upload via web browser” to browse for files saved on a local computer or select “Download from an http or ftp URL” for files saved on a network or over the Internet.



Figure 12: Restore From Local File Screen

Software Update Screen

The Software Update feature allows the user to update the latest Model 195Es operating system software from a file supplied by the factory or the Internet to the Model 195Es's flash memory. To upload from a file on your computer, select *Upload via web browser* and a file selection window will be displayed. To upload directly from the Internet, select *Download from an http or ftp URL* and enter the site address. See Figure 13.

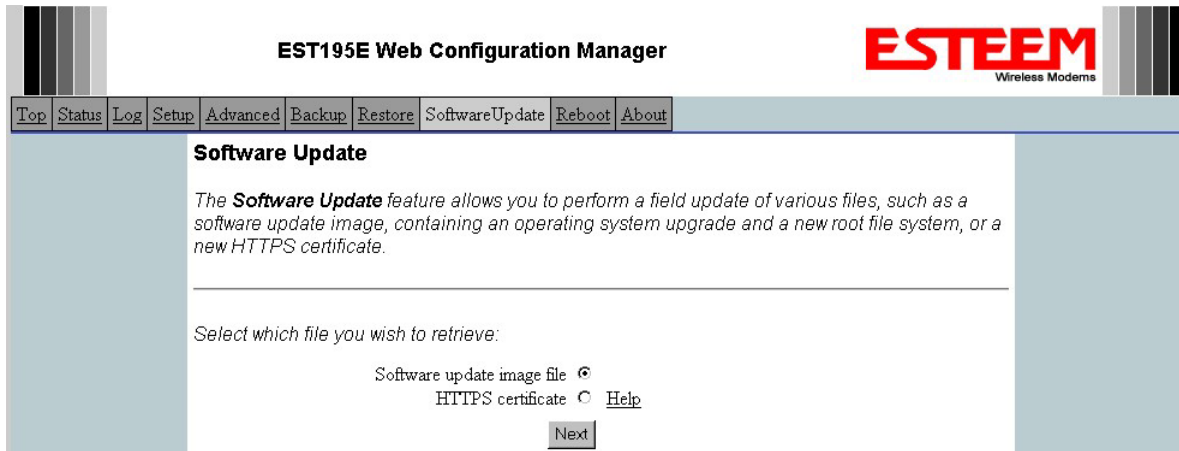


Figure 13: Software Update Screen

System Reboot Screen

The Reboot screen allows the user to reset the Model 195Es. See Figure 14.

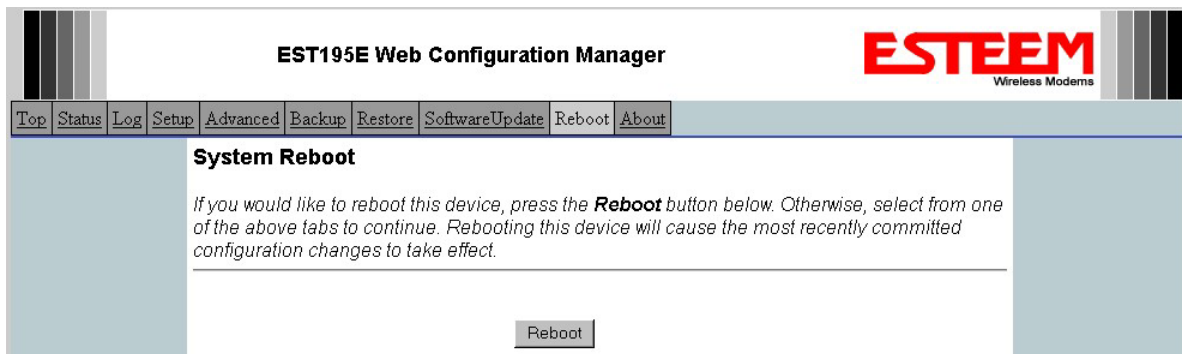


Figure 14: System Reboot Screen