

iHome®

Model: iBTW39
**Bluetooth Bedside/Home Office
Speaker System
with Qi Wireless Charging**



instruction manual

Questions? Contact Customer Service at 1-800-288-2792

iBTW39

Introduction

Thank you for purchasing the iHome iBTW39. This product is designed to provide high quality wireless sound for your Bluetooth audio device. It will also wirelessly charge compatible devices. For more features, download the iHome Enhance app to extend the possibilities of this product.

This instruction booklet explains the basic operation and care of the unit. Please read it carefully and keep for future reference.

Maintenance

- Place the unit on a level surface away from sources of direct sunlight or excessive heat.
- Protect your furniture when placing your unit on a natural wood and lacquered finish. A cloth or other protective material should be placed between it and the furniture.
- Clean your unit with a soft cloth moistened only with mild soap and water. Stronger cleaning agents, such as benzene, thinner or similar materials can damage the surface of the unit.

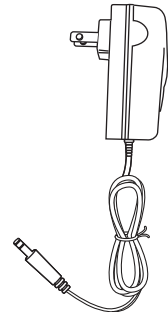
iBTW39

Included

- iBTW39 system
- 100V-240V universal AC adapter



iBTW39

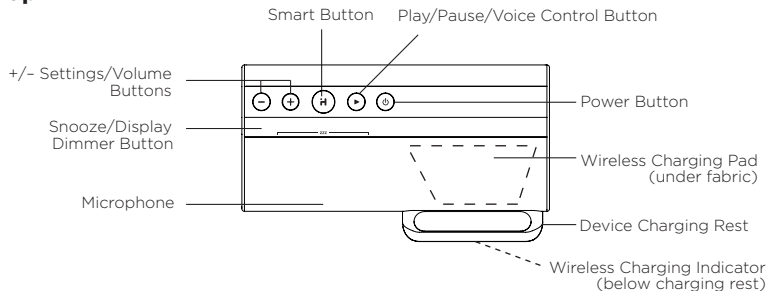


power adapter

Meet Your iBTW39

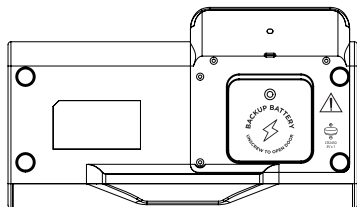
iBTW39

Top

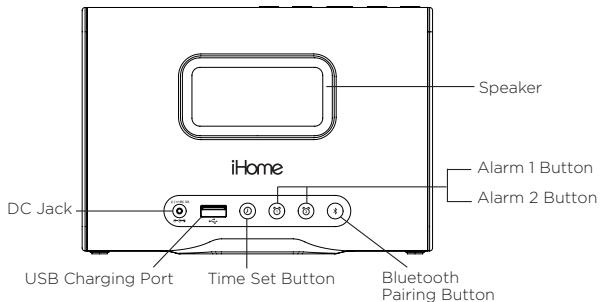


Back

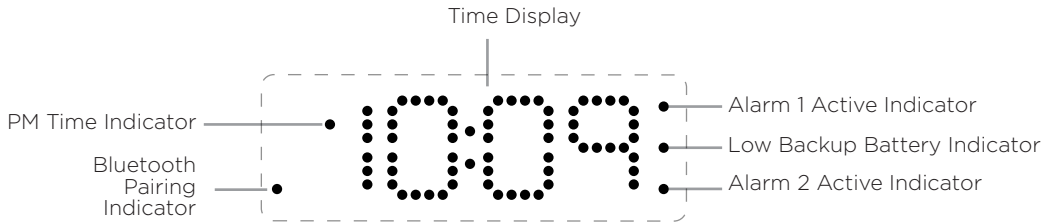
Bottom



Backup Battery Compartment



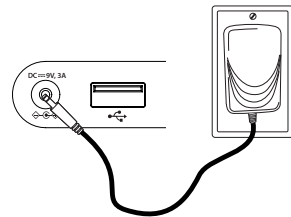
The Display



Setting Up the Unit

Connect the included AC adapter to the DC jack located on the back of the unit and connect the other end to a working wall outlet not controlled by a light switch.

CR2450 3V battery is included for battery backup. Install it in the backup battery compartment located on the bottom of the unit before using the unit. See page 11 for more on installing and replacing backup batteries.



Using the iHome Enhance App

Download the free iHome Enhance App from the App Store or Google Play to enjoy wireless interaction with the iBTW39 from your Bluetooth device. The app must be paired to the iBTW39 (the is separate from audio Bluetooth pairing (see page 9 for audio Bluetooth pairing).

- **To pair the App to iBTW39 and use Auto Time Sync:**

- a. Plug the unit into a working outlet.
- b. Turn on Bluetooth on your device.
- c. Download and launch the iHome Enhance app.
- d. Select “Setup your device” on the app.
- e. Select iHome iBTW39 app on the app’s device menu.
- f. If pairing request appears, select Pair.

The app will update the time on the iBTW39.

- **To turn off time sync capability** on the iBTW39, *press and hold* the **Time Set Button** for 10 seconds until “SYNC ON” appears on the display, then press the **-** or **+** **Button** to toggle to SYNC OFF.

To set clock manually, follow instructions on next page (6).

Setting the Clock

1. Press and hold the **⌚ Time Set Button** located on the back of the unit for 2 seconds until the clock display flashes and a beep sounds.
2. Press the **-** or **+** **Buttons** to adjust the clock to the current time (hold for rapid setting). Make sure you set the correct AM/PM time. The PM indicator appears to the left of the display; there is no AM indicator.
3. To toggle the clock display between standard 12 hour time and 24 hour (“military”) time display, press the **⌚ Alarm** or **⌚ Alarm Button** while the display is flashing during time setting.
4. Press and release the **⌚ Time Set Button** to confirm the current time setting. The YEAR will flash on the display. Press the **-** or **+** **Buttons** to set the correct year.
5. Press and release the **⌚ Time Set Button** to confirm the current year setting. The Month will flash on the display. Press the **-** or **+** **Buttons** to set the correct month (hold for rapid adjustment).
6. Press and release the **⌚ Time Set Button** to confirm the current month setting. The Date will flash on the display. Press the **-** or **+** **Buttons** to set the correct month (hold for rapid adjustment).
7. Press and release the **⌚ Time Set Button** to confirm the date. 2 beeps will sound to indicate time setting mode is complete.

Setting and Using the Alarm

This unit features dual alarms which can be set to different times and alarm sources. Each is set in the same way. Instructions are given as “Alarm Button”; use **⌚ Alarm Button** or **⌚ Alarm Button** located on the back of the unit to set respective alarms.

Note: Each step must be completed while display is flashing or step will time-out with any changes saved.

1. Press and hold the **Alarm Button** for 2 seconds until the alarm time display and alarm icon flash. A beep sounds.
2. Press the **-** or **+** **Buttons** to adjust the alarm time to the desired time (hold for rapid setting). Make sure you set the correct AM/PM alarm time. The PM indicator appears to the left of the time display; there is no AM indicator.

(Continued on next page)

Setting and Using the Alarm (Cont'd)

3. Press the **Alarm Button** to confirm the alarm time setting. The wake-to schedule will flash. Press the **-** or **+** **Buttons** to set the desired alarm schedule: 7 Days (every day), 5 Days (week days only) or 2 Days (weekends only).
4. Press the **Alarm Button** to confirm the alarm schedule. The wake source indicator will flash on the display. Press the **-** or **+** **Buttons** to select the desired wake to alarm source: "bt" (Bluetooth) or tone.
Wake to Bluetooth: You will wake to the currently linked Bluetooth device. If no device is detected, the alarm will default to current Tone.
Wake to Tone: Press the **Alarm Button** to confirm. Press the **-** or **+** **Buttons** as needed to listen to and to select one of the four built-in wake-to tones (t1 - t4).
5. Press the **Alarm Button** to confirm the alarm source. The volume display will flash.
6. Press the **-** or **+** **Buttons** to adjust the alarm volume. Note that the alarm volume setting is stored separately from other volume settings.
7. Press the **Alarm Button** to confirm the alarm settings and exit alarm setting mode. 2 beeps will confirm alarm setting is complete. The alarm icon will remain on the display, indicating the alarm is armed.

Previewing the Alarm and Turning the Alarm On/Off

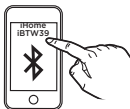
1. Press and release the **Alarm Button** to view the current alarm time.
2. Press and release the **Alarm Button** as needed to toggle the alarm ON and OFF, indicated by the related white alarm indicator and a beep.

Snooze/Display Dimmer Button

1. To program Snooze, press and hold the **Snooze/Display Dimmer Button** during normal operation (when no alarm is sounding).
2. Press the **-** or **+** **Buttons** to select the desired snooze time (between 01 and 29 minutes).
3. Press and release the **Snooze/Display Dimmer Button** to confirm Snooze setting. 2 beeps will sound.
4. While the alarm is sounding, press and release the **Snooze/Display Dimmer Button** to temporarily silence the alarm for the set duration (9 minutes is the default). Snooze can be used several times during the 1 hour alarm sounding time.
5. To adjust the brightness of the display, press and release the **Snooze/Display Dimmer Button** during normal operation (when no alarm is sounding) to cycle through the brightness display settings (Hi, 3, 2, Lo, and Off).

Pairing Your Bluetooth Device

Pairing establishes a unique communication connection between your Bluetooth device and the speaker. Once paired, you will be able to stream audio wirelessly to your Bluetooth Rechargeable Speaker. When AC power is connected, and the **⏻ Button** OR or **🔗 Bluetooth Button** is pressed, the iBTW39 will attempt to autolink to a previously paired device.



1. Turn on your Bluetooth device and make it “discoverable” by turning on Bluetooth mode (check in Connections or Settings).
2. Press the **⏻ Button** to turn on the iBTW39. **The first time the unit is powered on it will enter pairing mode automatically.** After this, you will need to pair using the Bluetooth Button after powering on (see step 3 below).
3. *Press and hold* the **🔗 Bluetooth Button** on top of the iBTW39 for 2 seconds. “PAIR” will flash in the display and the Bluetooth indicator will flash blue, indicating the iBTW39 is in pairing mode.
4. Select “iHome iBTW39” in your device’s Bluetooth menu to connect device. If prompted for a passcode, enter “1234” on your device’s keypad.

5. If pairing is successful, tones will sound and the Bluetooth indicator will flash twice, then appear solid blue, indicating the iBTW39 is ready to play music. There should also be an indication on your device. If no device is successfully paired within 3 minutes the iBTW39 will default to previous mode. Once the iBTW39 is paired to a device, it will attempt to autolink when the device is within range (about 33 feet). To reset Bluetooth, press and hold the **🔗 Bluetooth Button** for 10 seconds.

Playing Audio Via Bluetooth

1. Press the **⏻ Button** to turn the unit **ON**, or press the **📶 Button**. “bt” and the Bluetooth indicator appear on the display. To turn on in play mode, press the **▶ Button**.
2. Press the **▶ Button** on the unit to play or pause audio from your linked Bluetooth device.
3. Press the **-** or **+** **Buttons** to adjust the volume on the unit.
4. When done listening, press the **⏻ Button** to turn the unit off.

Using the Speakerphone feature

NOTE: The unit must be powered on and linked to a Bluetooth phone to receive a call.

1. When a call is received, playing music is muted to hear the ring tone.
“Call” will flash on the display.
Press the **▶ Button** to answer the call; **press and hold** the **▶ Button** to ignore the call.
2. When a call is completed, **press and hold** the **▶ Button** to end the call and resume previous function.

Using Qi Wireless Charging

This unit will wirelessly charge Qi compatible wireless charging phones. PMA wireless charging system is not supported.

CAUTION: Remove metal protective or magnetic case from phone before charging. When charging phone, do not place magnetic-striped or other metal objects on the charger. Doing so could damage the object or this unit. Qi compatible phones with metallic looking finishes will charge normally.

Place Qi compatible device on charging rest with front facing you. Check the green wireless charging indicator LED below the charging rest.

Rapid blinking green LED: Device is not charging properly. Reposition device.

Slow blinking green LED: Device is charging properly.

Solid green LED: Device is charged (some devices do not support this feature).

Using the Voice Control feature

NOTE: The unit must be powered on and linked to an iOS or Android Bluetooth device to use Voice Control. **Press and hold** the ► **Button** for 2 seconds and wait for beep to activate voice control with Siri or Google Assistant.

Voice control requires an active internet connection on connected Bluetooth device with iOS 10 and Android 4.1 and later. When activated, the speaker microphone acts as an extension of the microphone in your smartphone to make/take calls, enable you to ask Siri®/Google Assistant™ to play music and more.

Charging Devices via USB Port

1. Connect the standard size end of a USB cable (not included) to the USB Port on back of the unit and connect the other end to the charging port on your device.
2. Monitor the charging on your device. Some devices use a proprietary charging method and will not charge using the USB Port. If this happens, you must charge your device using the charger that came with it.

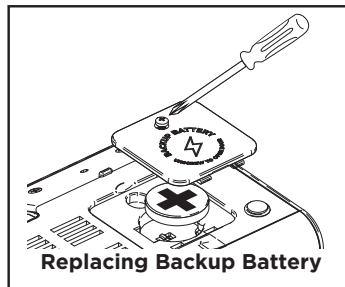
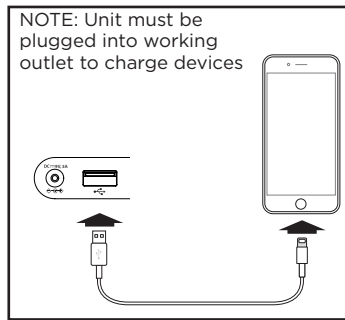
Replacing and Installing Clock Backup Battery

The unit comes with 1 CR2450 back-up battery installed to provide continuous alarm operation and clock settings in the event of a power failure. **Remove the battery pull tab before use.** When the Battery Low Icon located on the lower right of the display is flashing, it is time to replace the back-up battery. The battery compartment is located on the bottom of the unit.

1. Please make sure the AC adaptor is connected, otherwise all settings may be lost during battery replacement.
2. Use a Phillips screwdriver to remove the battery compartment cover located on the bottom of the unit.
3. Remove exhausted battery. Insert 1 CR2450 battery checking that the + side is facing you. Replace the compartment door. Do not over tighten.

Note: Make sure you dispose of battery properly (see your local regulations).

WARNING: Lithium batteries can explode or cause burns if disassembled, shorted, recharged, exposed to water, fire, or high temperatures. Do not place loose batteries in a pocket, purse, or other container containing metal objects, mix with used or other battery types, or store with hazardous or combustible materials. Store in cool, dry, ventilated area. Follow applicable laws and regulations for transport and disposal.



Unit doesn't respond (no sound)

- Check that all connections are correct and properly plugged in.
- Make sure your device is properly paired with the iBTW39.
- Make sure the Power is ON.
- Make sure unit is not connected to an outlet controlled by a switch
- Make sure volume is up on your Bluetooth device and on unit.

Unit doesn't respond (locked up or frozen)

- The unit may need to be reset. To do so, unplug the unit from power source and remove the backup battery. Let unit stand for 2 minutes. Re-install backup battery and connect unit to power source. You will need to reset the clock, Bluetooth and any other settings.

Trouble pairing device/computer with iBTW39

Bluetooth implementation varies depending on your device's hardware and operating system.

- When you power ON the unit, it will automatically link with the last previously paired Bluetooth device if the device is still within range (about 33 feet).
- Make sure your device is working properly. Check your device's manual for details on Bluetooth pairing and linking.
- To clear all Bluetooth devices, *press and hold the **Bluetooth Button** for 10 seconds* when unit is not in pairing mode. A tone will sound.

For further information and to see the latest instructions, visit www.ihome.com/support

Consumer Product Safety Guide

IMPORTANT SAFETY INSTRUCTIONS

When used in the directed manner, this unit has been designed and manufactured to ensure your personal safety. However, improper use can result in potential electrical shock or fire hazards. Please read all safety and operating instructions carefully before installation and use, and keep these instructions handy for future reference. Take special note of all warnings listed in these instructions and on the unit.

- 1. Water and Moisture** – The unit should not be used near water. For example: near a bathtub, washbowl, kitchen sink, laundry tub, swimming pool or in a wet basement.
- 2. Ventilation** – The unit should be situated so that its location or position does not interfere with its proper ventilation. For example, it should not be situated on a bed, sofa, rug or similar surface that may block ventilation openings. Also, it should not be placed in a built-in installation, such as a bookcase or cabinet, which may impede the flow of air through the ventilation openings.
- 3. Heat** – The unit should be situated away from heat sources such as radiators, heat registers, stoves or other appliances (including amplifiers) that produce heat.
- 4. Power Sources** – The unit should be connected to a power supply only of the type described in the operating instructions or as marked on the appliance. Only use the AC adapter that came with the unit.
- 5. Power-Cable Protection** – Power supply cables should be routed so that they are not likely to be walked on or pinched by items placed upon or against them. It is always best to have a clear area from where the cable exits the unit to where it is plugged into an AC socket.
- 6. Cleaning** – The unit should be cleaned only using a warm damp cloth. Do not use solvents, etc.
- 7. Objects and Liquid Entry** – Care should be taken so that objects do not fall and liquids are not spilled into any openings or vents located on the product.
- 8. Attachments** – Do not use attachments not recommended by the product manufacturer.
- 9. Lightning and Power Surge Protection** – Unplug the unit from the wall socket and disconnect the antenna or cable system during a lightning storm or when it is left unattended and unused for long periods of time. This will prevent damage to the product due to lightning and power-line surges.
- 10. Overloading** – Do not overload wall sockets, extension cords, or integral convenience receptacles as this can result in a risk of fire or electric shock.
- 11. Damage Requiring Service** – The unit should be serviced by qualified service personnel when:
 - A. the power supply cable or plug has been damaged.
 - B. objects have fallen into or liquid has been spilled into the enclosure.
 - C. the unit has been exposed to rain.
 - D. the unit has been dropped or the enclosure damaged.
 - E. the unit exhibits a marked change in performance or does not operate normally.
- 12. Periods of Nonuse** – If the unit is to be left unused for an extended period of time, such as a month or longer, the backup battery should be removed from the unit to prevent damage or corrosion.
- 13. Servicing** – The user should not attempt to service the unit beyond those methods described in the user's operating instructions. Service methods not covered in the operating instructions should be referred to qualified service personnel.

Questions? Visit www.ihome.com
or call 1-800-288-2792 Toll Free

FCC Information

iBTW39

FCC Radiation Exposure Statement

FCC ID: EMOIBTW39

This equipment complies with FCC RF radiation exposure limits set forth for an uncontrolled environment. IC: 986B-IBTW39

This device complies with Part 15 of the FCC Rules, operation is subject to the following two conditions: (1) This device may not cause harmful interference, and (2) this device must accept any interference received, including interference that may cause undesired operation.

- Warning: Changes or modifications to this unit not expressly approved by the party responsible for compliance could void the user's authority to operate the equipment.
- NOTE: This equipment has been tested and found to comply with the limits for a Class B digital device, pursuant to Part 15 of the FCC Rules.

These limits are designed to provide reasonable protection against harmful interference in a residential installation. This equipment generates, uses and can radiate radio frequency energy and, if not installed and used in accordance with the instructions, may cause harmful interference to radio communications.

However, there is no guarantee that interference will not occur in a particular installation. If this equipment does cause harmful interference to radio or television reception, which can be determined by turning the equipment off and on, the user is encouraged to try to correct the interference by one or more of the following measures:

- Reorient or relocate the receiving antenna.
- Increase the separation between the equipment and receiver.
- Connect the equipment into an outlet on a circuit different from that to which the receiver is connected.
- Consult the dealer or an experienced radio/TV technician for help.

This equipment should be installed and operated with minimum distance 20cm between the radiator & your body.

CAN ICES-3(B) / NMB-3(B)

IC Statement

This device complies with Industry Canada license-exempt RSS standard(s). Operation is subject to the following two conditions: (1) this device may not cause interference, and (2) this device must accept any interference, including interference that may cause undesired operation of the device.

Le présent appareil est conforme aux CNR d'Industrie Canada applicables aux appareils radio exempts de licence. L'exploitation est autorisée aux deux conditions suivantes : (1) l'appareil ne doit pas produire de brouillage, et (2) l'utilisateur de l'appareil doit accepter tout brouillage radioélectrique subi, même si le brouillage est susceptible d'en compromettre le fonctionnement.

The device meets the exemption from the routine evaluation limits in section 2.5 of RSS 102 and compliance with RSS-102 RF exposure, users can obtain Canadian information on RF exposure and compliance.

This equipment should be installed and operated with minimum distance 20cm between the radiator & your body.

Le dispositif rencontre l'exemption des limites courantes d'évaluation dans la section 2.5 de RSS 102 et la conformité à l'exposition de RSS-102 rf, utilisateurs peut obtenir l'information canadienne sur l'exposition et la conformité de rf.

Cet équipement doit être installé et utilisé avec une distance minimale de 20 cm entre le radiateur et votre corps.

© 2018 SDI Technologies, Inc. All rights reserved
Questions? Visit www.ihome.com
or call 1-800-288-2792 Toll Free