


iAV5 QSG (English)
 Size: 280 x 160 mm (folded: 140 x 160 mm)
 Color: print Black and 
 Material: 260gsm Art Card, 4C + 4C
 Jan 11, 2018



BACK

FRONT

FCC Information

FCC Radiation Exposure Statement

The device has been evaluated to meet general RF exposure requirement.
 The device can be used in portable exposure condition without restriction.

Model: iAV5

FCC ID: EMOIAV5
 IC: 986B-IAV5

This device complies with Part 15 of the FCC Rules, operation is subject to the following two conditions: (1) This device may not cause harmful interference, and (2) this device must accept any interference received, including interference that may cause undesired operation.

- Warning: Changes or modifications to this unit not expressly approved by the party responsible for compliance could void the user's authority to operate the equipment.
 - NOTE: This equipment has been tested and found to comply with the limits for a Class B digital device, pursuant to Part 15 of the FCC Rules.
- These limits are designed to provide reasonable protection against harmful interference in a residential installation. This equipment generates, uses and can radiate radio frequency energy and, if not installed and used in accordance with the instructions, may cause harmful interference to radio communications. However, there is no guarantee that interference will not occur in a particular installation. If this equipment does cause harmful interference to radio or television reception, which can be determined by turning the equipment off and on, the user is encouraged to try to correct the interference by one or more of the following measures:
- Reorient or relocate the receiving antenna.
 - Increase the separation between the equipment and receiver.
 - Connect the equipment into an outlet on a circuit different from that to which the receiver is connected.
 - Consult the dealer or an experienced radio/TV technician for help.

CAN ICES-3 (B)/NMB-3(B)

Canada Statement

This device complies with Industry Canada's licence-exempt RSSs. Operation is subject to the following two conditions:

- (1) This device may not cause interference; and
- (2) This device must accept any interference, including interference that may cause undesired operation of the device.

Le présent appareil est conforme aux CNR d'Industrie Canada applicables aux appareils radio exempts de licence. L'exploitation est autorisée aux deux conditions suivantes :

- (1) l'appareil ne doit pas produire de brouillage;
- (2) l'utilisateur de l'appareil doit accepter tout brouillage radioélectrique subi, même si le brouillage est susceptible d'en compromettre le fonctionnement.

The device has been evaluated to meet general RF exposure requirement.

The device can be used in portable exposure condition without restriction.

le dispositif a été évalué à satisfaire l'exigence générale de l'exposition aux rf.
 l'appareil peut être utilisé dans des conditions d'exposition portatif sans restriction.

WARNING/DISPOSAL OF UNIT

Do NOT attempt to change the battery. Doing so will void the warranty and could cause injury and damage to your device.

To dispose of the unit, follow the instructions below:

- Never dispose of used batteries/electronics with ordinary solid wastes, since they contain toxic substances.
- Always dispose of used batteries/electronics in accordance with the prevailing community regulations.
- Many electronics retailers now recycle batteries and other electronic components at no charge.

GENERAL BATTERY PRECAUTIONS

- Never use or charge a battery if it appears to be leaking, discolored, deformed, or in any way abnormal.
- Never disassemble the unit or attempt to remove battery as that could cause leakage of alkaline solution or other electrolytic substances.
- Avoid charging a rechargeable battery when the temperature is not within 5°C - 35°C (41° - 95° Fahrenheit).
- Never expose a battery to any liquid.
- Never expose a battery to excessive heat such as direct sunlight or fire. Never use a battery pack in an unventilated vehicle where excessive internal temperatures may be encountered.
- Always keep batteries out of the reach of infants and small children.

iAV5-171024-A

Printed in China

iHome

Color Changing Bluetooth Rechargeable
 Stereo Speaker System for Amazon Echo Dot™

Model: iAV5

QUICK START GUIDE

In the Box » iAV5 » USB cable »

1 Power Button

Press and hold for 2 seconds to power unit ON or OFF.

2 Battery/Charge indicator

Solid red = charging

Solid green = fully charged

3 USB Charge Port

Connect a standard USB cable (such as the one included with your Amazon Echo Dot) to charge iAV5 for portable use.

4 Bluetooth Indicator

Fast blinking blue = pairing

Slow blinking blue = linking

Solid blue = paired to device

5 Bluetooth Button

Press and hold for 2 seconds to pair a device with the iAV5

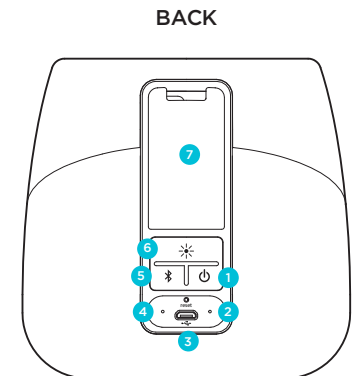
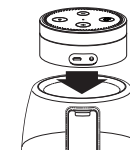
Press to answer incoming call

Press and hold for 2 seconds to end or decline call.

6 Color Change Button

Press and release to cycle through color change modes:

slow fade, fast change, favorite color, pulse to music, preset pulse mode and off.



CHARGE UNIT
 BEFORE USE
 ABOUT 7 HOURS

7 Dock cover/Built-in USB for Dot™

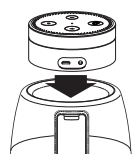
Remove back cover to connect built-in USB cable to power your Amazon Dot™



INTERIOR

CONNECTING YOUR AMAZON ECHO DOT

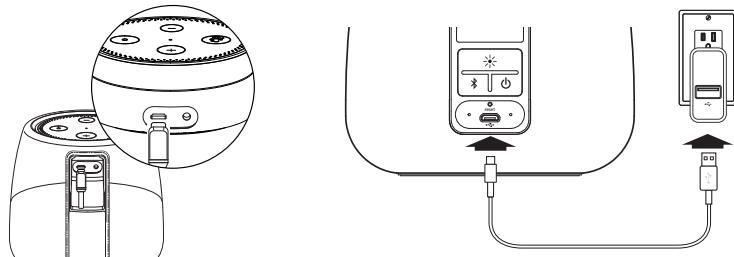
Docking Your Amazon Echo Dot



- » Align the rear of the Echo Dot (the side with the USB port and Aux Jack) with the opening in the iAV5 dock well and place with the ports facing the back.

Powering Amazon Echo Dot

BACK



- » Connect the built-in USB cable 7 to the Echo Dot USB Port. Connect the iAV5 to USB power source via USB cable (not included).
- » The iAV5 powers the Echo Dot. Once fully charged, you can operate both the iAV5 and the Echo Dot portably.

Pairing and Playing Amazon Echo Dot Audio or Bluetooth Device



- » Press and hold the **Power Button** for 2 seconds to power on the iAV5.



- » Press and hold the **Bluetooth Button** for 2 seconds to enter pairing mode.

- » Open the Alexa app and select Settings. Select your Echo Dot, then select Bluetooth > Pair a New Device or ask Alexa to do so. Select "iHome iAV5" on the menu. You will hear a "Connected" announcement once the Echo Dot is paired with the iAV5. Connect other Bluetooth device: Turn on Bluetooth mode on your device, select "iHome iAV5" on the menu. When pairing successful, you will hear a "Connected" you can now begin to stream audio and calls from your device.

Press the Bluetooth Button to answer incoming call. Press and hold to ignore/end call.

- » You can now "Ask Alexa" to access all the functions of Echo Dot and hear the audio through the iAV5.

VOLUME CONTROL



- » Use the volume control on the Amazon Echo Dot to adjust the volume to your desired level.

- » TIP: You can use Alexa voice commands to change volume or stop/pause playback.

"Alexa, stop"
 "Alexa, mute" or "Alexa, unmute"

"Alexa, set volume to 5"
 "Alexa, turn up/down the volume"

BATTERY LEVEL

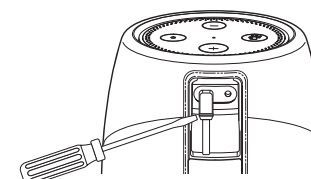
- » A voice will automatically announce when the battery level is very low
- » Press and hold the * **Color Mode Button** to hear current battery level voice announcement

RESET PORT

- » If the unit "freezes up" or otherwise fails to respond properly, insert a paper clip or similar into the Reset Port on the back of the unit

UNDOCKING THE DOT

- » TIP: Insert the end of a small screw driver or similar beside the built-in USB cable when it is connected and gently pry to release USB connector from Amazon Dot



Contact Us: 1-800-288-2792
 For full warranty and full instructions visit: www.ihome.com/support

Amazon, Alexa, Echo Dot and all related logos are trademarks of Amazon.com, Inc. or its affiliates.