



SMART Slate WS200

User's Guide

Extraordinary made simple™

SMART™

Product Registration

If you register your SMART product, we'll notify you of new features and software upgrades.

Register online at www.smarttech.com/registration.

Keep the following information available in case you need to contact SMART Technical Support.

Serial Number: _____

Date of Purchase: _____

FCC Warning

This equipment has been tested and found to comply with the limits for a Class A digital device, pursuant to Part 15 of the FCC Rules. These limits are designed to provide reasonable protection against harmful interference when the equipment is operated in a commercial environment. This equipment generates, uses and can radiate radio frequency energy and, if not installed and used in accordance with the manufacturer's instructions, may cause harmful interference to radio communications. Operation of this equipment in a residential area is likely to cause harmful interference in which case the user will be required to correct the interference at his own expense.

Trademark Notice

The SMART logo and smarttech are trademarks or registered trademarks of SMART Technologies ULC in the U.S. and/or other countries. All other third-party product and company names may be trademarks of their respective owners.

Copyright Notice

©2009 SMART Technologies ULC. All rights reserved. No part of this publication may be reproduced, transmitted, transcribed, stored in a retrieval system or translated into any language in any form by any means without the prior written consent of SMART Technologies ULC. Information in this manual is subject to change without notice and does not represent a commitment on the part of SMART.

Patent No. US5448263; US6141000; US6320597; US6326954; US6337681; US6741267; US6747636; US7151533; CA2058219; CA2252302. Other patents pending.

06/2009

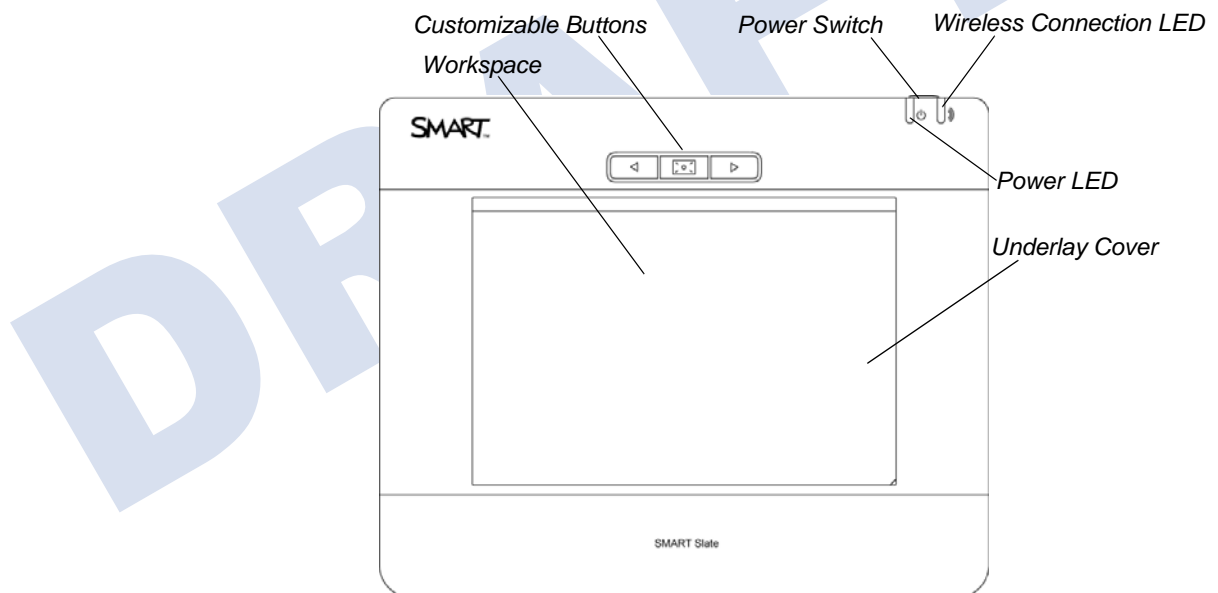
1	About Your SMART Slate WS200.....	1
	Tethered Pen	2
	USB Charging Cable.....	2
	SMART Notebook Software	2
	Bluetooth® USB Wireless Adapter (Not Included).....	3
2	Attaching the Pen Tether	5
	Charging your Slate	6
	Installing SMART Notebook software and SMART Board Drivers.....	6
	Establishing a Wireless Connection to Your Computer	7
	Installing your Bluetooth USB Wireless Adapter (Not Included)	8
3	Using the Pen.....	9
	Connecting Multiple Slates.....	9
	Storing the Pen	9
	Using the slate buttons.....	9
	Using the pen buttons	10
	Storing the USB adapter	10
4	Paper Underlays	11
	Waste Electrical and Electronic Equipment Regulations (WEEE Directive).....	13
	Restriction of Certain Hazardous Substances (RoHS Directive).....	13
	Batteries	13
	Packaging.....	14
	Covered Electronics Devices.....	14
	China’s Electronic Information Products Regulations.....	14
	U.S. Consumer Product Safety Improvement Act	14
	Online Information and Support.....	15
	Training.....	15
	Technical Support.....	15
	Shipping and Repair Status.....	15
	General Inquiries	16
	Warranty	16
	Registration	16

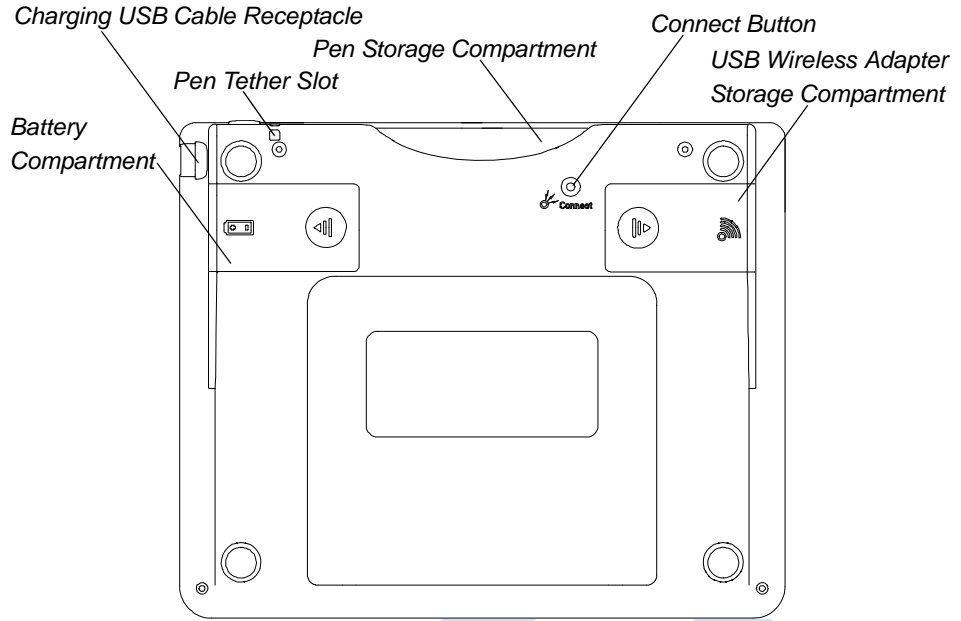
Chapter 1

Overview

About Your SMART Slate WS200

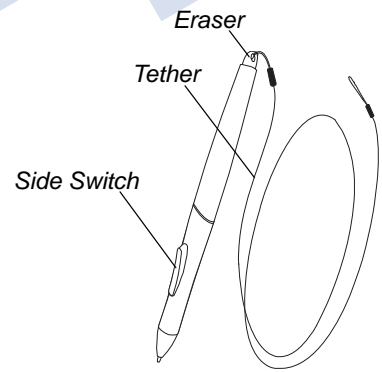
The SMART Slate works with your computer and a SMART Board™ interactive whiteboard and allows you to write notes, use applications and perform normal computer operations. The slate connects wirelessly to your computer and has a range of 33" (10 m), allowing teachers to write notes and use applications from a distance. You can use up to seven slates at the same time allowing multiple teachers and students to write on the slate and have their notes appear on the interactive whiteboard.





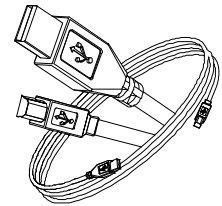
Tethered Pen

The pen controls the pointer on your display. Move the pen above the surface of the slate to move the pointer. When you touch the pen to the slate your computer registers the point of contact as a left mouse click. Touch the pen to the slate to write notes and use computer applications. The pen has a side switch and an eraser that you can customize. You can attach the pen tether so that you don't misplace the pen.



USB Charging Cable

You can charge your slate by connecting it to your computer with the USB charging cable. Your slate comes with an installed lithium ion battery. It takes XX to fully charge the battery, which lasts for XX hours.



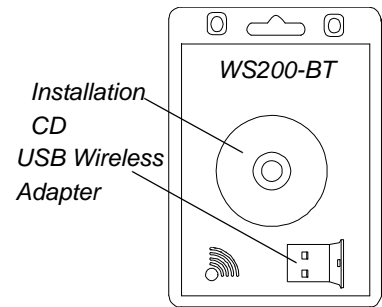
SMART Notebook Software

Your slate comes with a SMART Notebook software CD pack. The first CD contains SMART Notebook software and the second CD contains the drivers you need to connect your SMART Slate to your computer.



Bluetooth® USB Wireless Adapter (Not Included)

If your computer doesn't have built-in Bluetooth wireless capability, you must purchase the Bluetooth USB wireless adapter (part # WS200-BT) from your local [SMART Reseller](#). The Bluetooth USB wireless adapter enables you to connect your slate to your computer.



DRAFT

DRAFT

Chapter 2

Setting Up Your SMART Slate

Before you can use your slate, you must do the following:

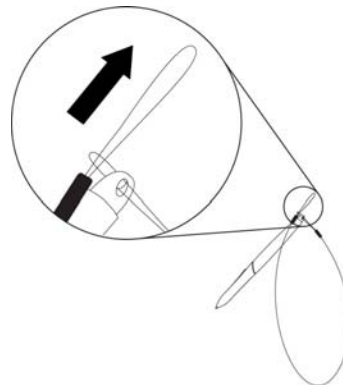
- Attach the pen tether (page 5).
- Install the battery (?) (page 6).
- Charge the slate (page 6).
- Install SMART Notebook software and SMART Board drivers on your computer (page 6).
- Install a paper underlay (page 7).
- Establish a Bluetooth wireless connection (page 7).
- If your computer doesn't have built-in Bluetooth wireless capability, install the Bluetooth USB wireless adapter (page 8).

Attaching the Pen Tether

The tether connects the pen to the slate so you don't misplace the pen.

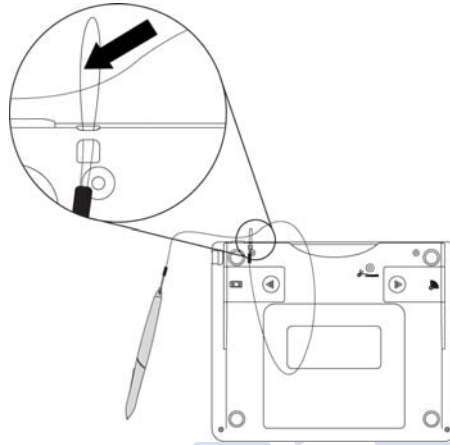
To attach the tether to the pen

1. Thread one tether loop through the hole at the end of the pen.
2. Feed the other tether loop through the first loop as shown in the diagram below, and then pull the tether so the first loop is snug.



To attach the tether to the slate

1. Place the tether loop that is free through the tether slot in the slate.
2. Feed the pen, with the tether attached, through the loop as shown in the diagram below, and then pull the tether so the loop is snug.



Installing the Battery (?)

Charging your Slate

Your slate comes with an installed lithium ion battery that powers the slate so your movement isn't restricted by a power cable. You can charge the slate by connecting it to your computer with the included USB charging cable. It takes XX hours to charge the slate, and a fully charged slate lasts for XX hours of use.

If the power LED glows green, the slate is fully charged. If the power LED glows red, the slate needs to be charged.

To charge your slate

1. Turn on your computer.
2. Connect the USB A connector of the charging cable to your computer.
3. Connect the USB B connector of the charging cable to your slate.

The slate starts to charge and the power LED glows green.

Installing SMART Notebook software and SMART Board Drivers

Your SMART Slate WS200 comes with a SMART Notebook software and SMART Board drivers CD pack. SMART Notebook is presentation and collaboration software that is designed to work with your slate. The SMART Board drivers enables your computer to connect to the slate.

To install SMART Notebook Software

Insert the SMART Notebook software CD into your computer's CD drive, and then follow the on-screen instructions.

To install SMART Board drivers

Insert the SMART Board drivers CD into your computer's CD drive, and then follow the on-screen instructions.

Installing a Paper Underlay

An underlay is a sheet of paper with a tool strip that you can place on the workspace under the underlay cover. Touch the tool you want to use with the pen. You can customize the tools that you use most often to appear on the tool strip and then print the underlay.

To print an underlay

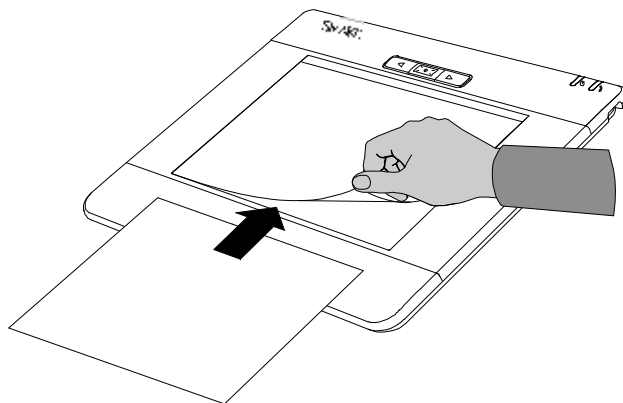
1. In the SMART Notebook **Control Panel**, press **SMART Hardware Settings**.
2. Select **Set Up Underlay and Icon Strip** from the drop-down menu.
3. Select an existing underlay from the color scheme drop-down menu.

OR

4. Press **Print Screen** to print the underlay.

To install the underlay

1. Lift the underlay cover from the lower right corner with your finger.
2. Slide the underlay beneath the underlay cover.



3. Lower the underlay cover.

Establishing a Wireless Connection to Your Computer

The SMART Slate WS200 uses Bluetooth technology to connect wirelessly to your computer. In order to use your slate, your computer must have built-in Bluetooth wireless capability.

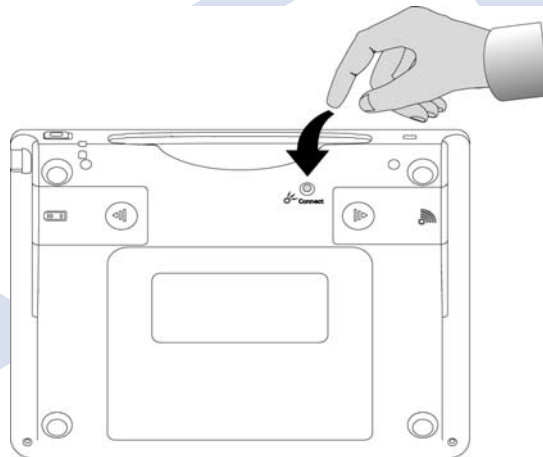
i NOTE

If your computer doesn't have built-in Bluetooth wireless capability, you must purchase the Bluetooth USB wireless adapter (Part # WS200-BT) from your local [SMART Reseller](#). Install the Bluetooth wireless adapter (see page 8 for more information) before you establish a wireless connection with your computer.

To establish a wireless connection

1. Move the power switch to the left to turn on the slate.
2. Press the **Connect** button on the back of the slate.

The wireless connection LED on the slate flashes green.



3. Double-click the Bluetooth icon in your computer's notification area.

The *Bluetooth Settings* window appears.

4. Press **New Connection**.

The *Add New Connection Wizard* appears.

5. Select the **Express Mode** check box, and then click **Next**.

6. Select the SMART Slate WS200 from the list of devices, and then complete the steps in the connection wizard.

When your slate is wirelessly connected to your computer, the connection LED on the slate stops flashing and glows green.

Installing your Bluetooth USB Wireless Adapter (Not Included)

If your computer doesn't have built-in Bluetooth wireless capability, you must install the Bluetooth USB wireless adapter (Part # WS200-BT) before you can establish a wireless connection to your computer.

To install the Bluetooth USB wireless adapter

1. Connect the USB wireless adapter to your computer's USB receptacle.
 2. Place the Bluetooth USB wireless adapter installation CD into your computer's CD drive, and then follow the on-screen instructions.
-

DRAFT

DRAFT

Chapter 3

Using Your Slate

The slate's workspace is a mapped representation of your display. If you move the pen to the top right corner of the slate's workspace, the pointer will move to the top right corner of your display.

Turning on the Slate

To turn on the slate

Slide the power switch to the left.

The power LED glows green.

Connecting the Slate

After you've created a wireless connection between your slate and your computer (see page 7), your slate automatically establishes a wireless connection with your computer when you turn the slate on (is this true? if not, what needs to be done? etc.).

Using the Pen

The pen controls the pointer on your display. The slate detects the pen's movement from a distance of XX mm. The pen has a side switch with an upper and lower position. You can also flip the pen on its end and use the top of the pen to use the eraser function.

i NOTE

You can change the functions of the side switch and the top of the pen. See page 11 for more information.

To move the pointer on your display

Move the pen a few millimeters above the surface of the slate to move the pointer on your display.

To write on your display

Hold the lower side switch down as you touch the pen to the slate to write on your display.

If the program that you are writing on is non-Aware (that is, isn't integrated with SMART Notebook software) whatever you write or draw appears on a transparent layer over the current program. You can close the transparent layer at any time by clicking the **Close** button in the upper right corner of the screen.

To perform a left-click

Touch the pen to the surface of the slate to perform a left-click.

To perform a right-click

Touch the pen to the surface of the slate while pressing the upper side switch button to perform a right-click.

To use the eraser

Flip the pen upside down and touch the pen to the slate to use the eraser.

Using the Slate Buttons

The slate has three buttons above the workspace. You can change the functions of these buttons so that the tools you use most often are easily accessible.

To open SMART Notebook software

Press the center slate button (need to get graphic) to open SMART Notebook software.

SMART Notebook software opens.

To move back one page

Press the left arrow button (need to get graphic) to move back one page.

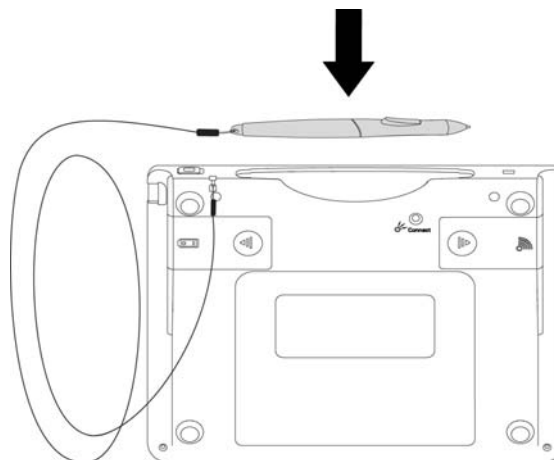
To move forward one page

Press the right arrow button (need to get graphic) to move forward one page.

Checking the Charge Status of the Battery

Storing the Pen

You can store the pen in the pen storage compartment when you're not using the pen.



Storing the Bluetooth USB adapter

You can store the Bluetooth USB wireless adapter in the storage compartment on the back of the slate. There is a foam pad in the storage compartment so that the USB wireless adapter doesn't rattle when you move the slate.

DRAFT


DRAFT

Chapter 4

Customizing Your Slate

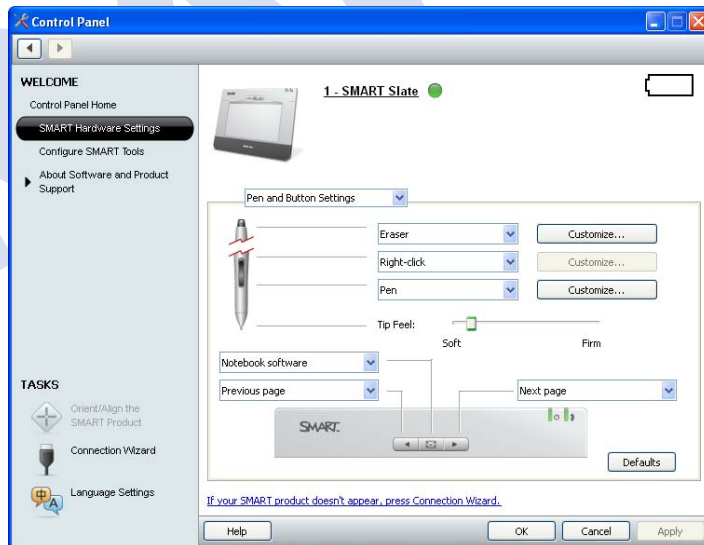
You can customize the functions of the slate buttons, the pen side switch, the pen eraser. You can also create a tool strip with the tools you most often use on a paper underlay.

To customize the slate and pen buttons

1. Press the SMART Notebook icon  in your system tray (Windows operating systems) or the doc (Mac computers), and then select **Control Panel** from the list.

The Control Panel appears.

2. Press **SMART Hardware Settings**.



3. Do they have to select the slate from a list if there is more than one SMART product connected?
4. Use the drop-down menus to select a function for the pen side switch, the top of the pen, and the three slate buttons
5. Press **Customize...** to further customize the selected function.

Customizing your Paper Underlay

- 1.
 2. Press **Configure Icon Strip** to customize the tools that you use most often on the icon strip.
 - 3.
-

DRAFT

Appendix A

Hardware Environmental Compliance

SMART Technologies supports global efforts to ensure that electronic equipment is manufactured, sold and disposed of in a safe and environmentally friendly manner.

Waste Electrical and Electronic Equipment Regulations (WEEE Directive)

Waste Electrical and Electronic Equipment regulations apply to all electrical and electronic equipment sold within the European Union.

When you dispose of any electrical or electronic equipment, including SMART Technologies products, we strongly encourage you to properly recycle the electronic product when it has reached end of its life. If you require further information, please contact your reseller or SMART Technologies for information on which recycling agency to contact.

Restriction of Certain Hazardous Substances (RoHS Directive)

This product meets the requirements of the European Union's Restriction of Certain Hazardous Substances (RoHS) Directive 2002/95/EC.

Consequently, this product also complies with other regulations that have arisen in various geographical areas, and that reference the European Union's RoHS directive.

Batteries

Batteries are regulated in many countries. Check with your reseller to find out how to recycle used batteries.

Packaging

Many countries have regulations restricting the use of certain heavy metals in product packaging. The packaging used by SMART Technologies to ship products complies with applicable packaging laws.

Covered Electronics Devices

Many U.S. states classify monitors as Covered Electronic Devices and regulate their disposal. Applicable SMART Technologies products meet the requirements of the Covered Electronic Devices regulations.

China's Electronic Information Products Regulations

China regulates products that are classified as EIP (Electronic Information Products). SMART Technologies products fall under this classification and meet the requirements for China's EIP regulations.

U.S. Consumer Product Safety Improvement Act

The United States has enacted the *Consumer Product Safety Improvement Act* which limits the lead (Pb) content in products. SMART Technologies is committed to complying with this initiative.

Appendix B

Customer Support

Online Information and Support

Visit www.smarttech.com/support to view and download user's guides, how-to and troubleshooting articles, software and more.

Training

Visit www.smarttech.com/trainingcenter for training materials and information about our training services.

Technical Support

If you experience difficulty with your SMART product, please contact your local reseller before contacting SMART Technical Support. Your local reseller can resolve most issues without delay.

NOTE

To locate your local reseller, visit www2.smarttech.com/st/en-US/Where+to+Buy.

All SMART products include online, telephone, fax and e-mail support:

Online	www.smarttech.com/contactsupport
Telephone	+1.403.228.5940 or Toll Free 1.866.518.6791 (U.S./Canada) (Monday to Friday, 5 a.m. – 6 p.m. Mountain Time)
Fax	+1.403.806.1256
E-mail	support@smarttech.com

Shipping and Repair Status

Contact SMART's Return of Merchandise Authorization (RMA) group, Option 4, +1.866.518.6791, for shipping damage, missing part and repair status issues.

General Inquiries

Address SMART Technologies
3636 Research Road NW
Calgary, AB T2L 1Y1
CANADA

Switchboard +1.403.245.0333 or
Toll Free 1.888.42.SMART (U.S./Canada)

Fax +1.403.228.2500

E-mail info@smarttech.com

Warranty

Product warranty is governed by the terms and conditions of SMART's "Limited Equipment Warranty" that shipped with the SMART product at the time of purchase.

Registration

To help us serve you, register online at www.smarttech.com/registration.

DRAFT

Federal Communication Commission Interference Statement

This equipment has been tested and found to comply with the limits for a Class B digital device, pursuant to Part 15 of the FCC Rules. These limits are designed to provide reasonable protection against harmful interference in a residential installation. This equipment generates, uses and can radiate radio frequency energy and, if not installed and used in accordance with the instructions, may cause harmful interference to radio communications. However, there is no guarantee that interference will not occur in a particular installation. If this equipment does cause harmful interference to radio or television reception, which can be determined by turning the equipment off and on, the user is encouraged to try to correct the interference by one of the following measures:

- Reorient or relocate the receiving antenna.
- Increase the separation between the equipment and receiver.
- Connect the equipment into an outlet on a circuit different from that to which the receiver is connected.
- Consult the dealer or an experienced radio/TV technician for help.

This device complies with Part 15 of the FCC Rules. Operation is subject to the following two conditions: (1) This device may not cause harmful interference, and (2) this device must accept any interference received, including interference that may cause undesired operation.

FCC Caution: Any changes or modifications not expressly approved by the party responsible for compliance could void the user's authority to operate this equipment.

IMPORTANT NOTE:

FCC Radiation Exposure Statement:

This equipment complies with FCC radiation exposure limits set forth for an uncontrolled environment. End users must follow the specific operating instructions for satisfying RF exposure compliance.

This transmitter must not be co-located or operating in conjunction with any other antenna or transmitter.

IC Statement

Operation is subject to the following two conditions: 1) this device may not cause interference and 2) this device must accept any interference, including interference that may cause undesired operation of the device.

SMART[™]

Toll Free 1.866.518.6791 (U.S./Canada)
or +1.403.228.5940
www.smarttech.com

Part No.