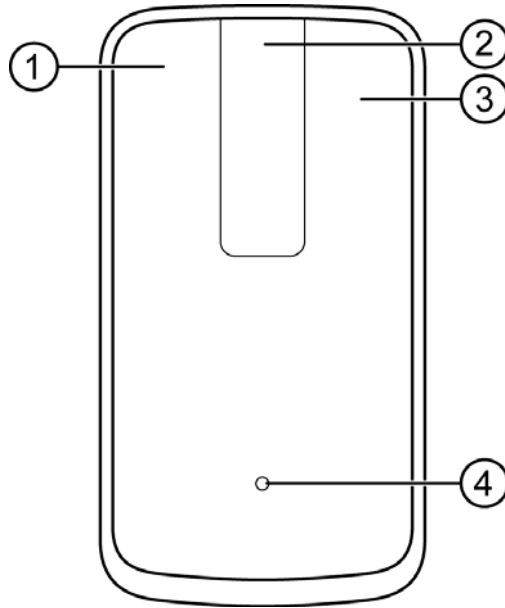


Dell™ Ultra Violet Touch Mouse
(online user's manual)

Features: Dell™ Ultra Violet Touch Mouse

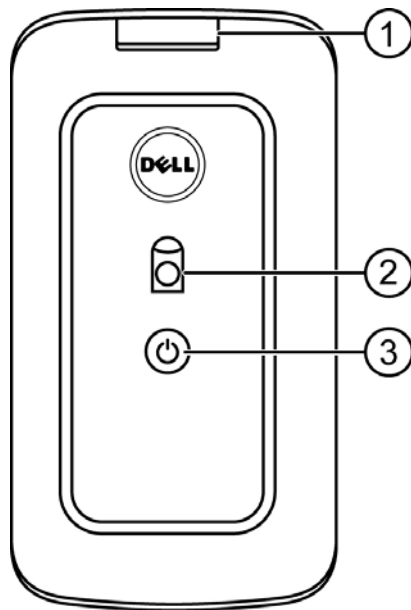
- Dell™ Ultra Violet Touch Mouse Front View
 - Dell™ Ultra Violet Touch Mouse Rear View
-

Dell™ Ultra Violet Touch Mouse Front View



No.	Description
1	Left Mouse Click
2	Touch Scroll
3	Right Mouse Click
4	Battery Indicator <ul style="list-style-type: none">- Amber (blinks): Low Battery- Amber (solid): Battery Charging- White (solid): Charging Complete

Dell™ Ultra Violet Touch Mouse Rear View



No.	Description
1	USB port cover
2	Optical Sensor
3	Power Button and Indicator - White (solid): Power on - Blue (blinks): In Pairing mode

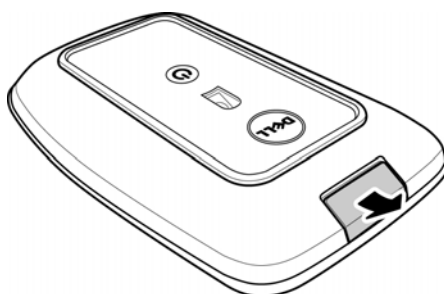
Setup: Dell™ Ultra Violet Touch Mouse

- Charging Dell™ Ultra Violet Touch Mouse
 - Installing Dell™ WM713 Wireless Touch Mouse Software
 - Pairing Dell™ Ultra Violet Touch Mouse
 - Configuring Dell™ Ultra Violet Touch Mouse Settings
-

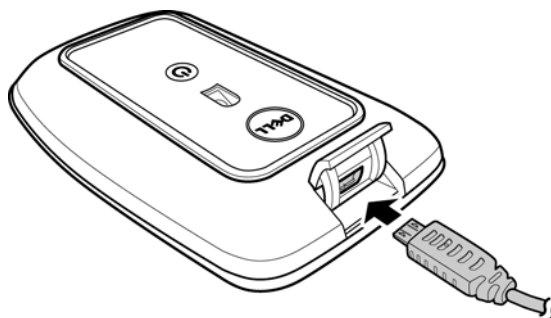
Charging Dell™ Ultra Violet Touch Mouse

Before using this touch mouse for the first time, you need to charge using the USB cable. Normal charge is approximately 4 hours.

1. Open the USB port cover.



2. Connect one end of the USB cable to the mini USB port of the mouse.



3. Connect the other end of the USB cable to the notebook or computer.



- The **Amber LED** lights up while the battery is charging.
- The **White LED** lights up when the battery is fully charged. Once the USB cable is unplugged, the **White LED** is turned off.

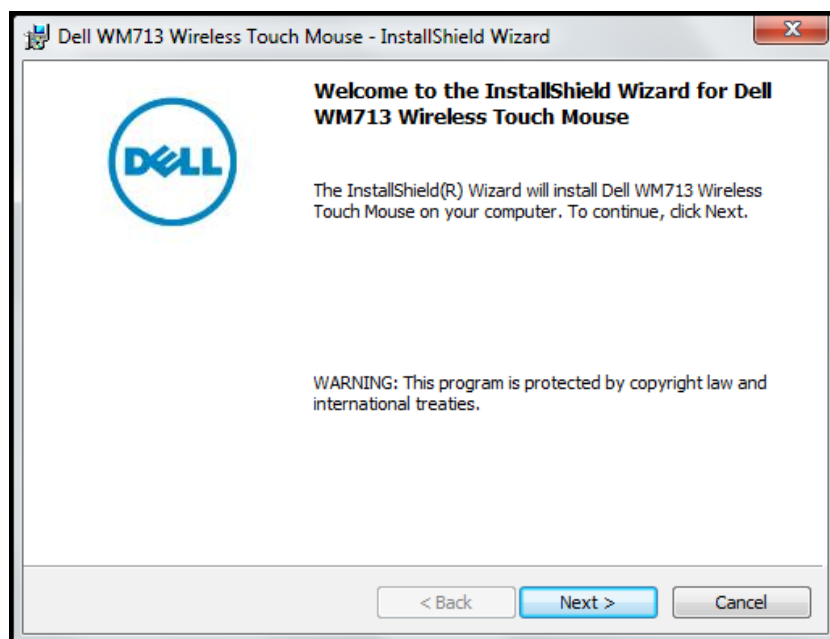
Installing Dell™ WM713 Wireless Touch Mouse Software

To customize the touch mouse settings, you need to install the Wireless Touch Mouse software into your notebook or computer.

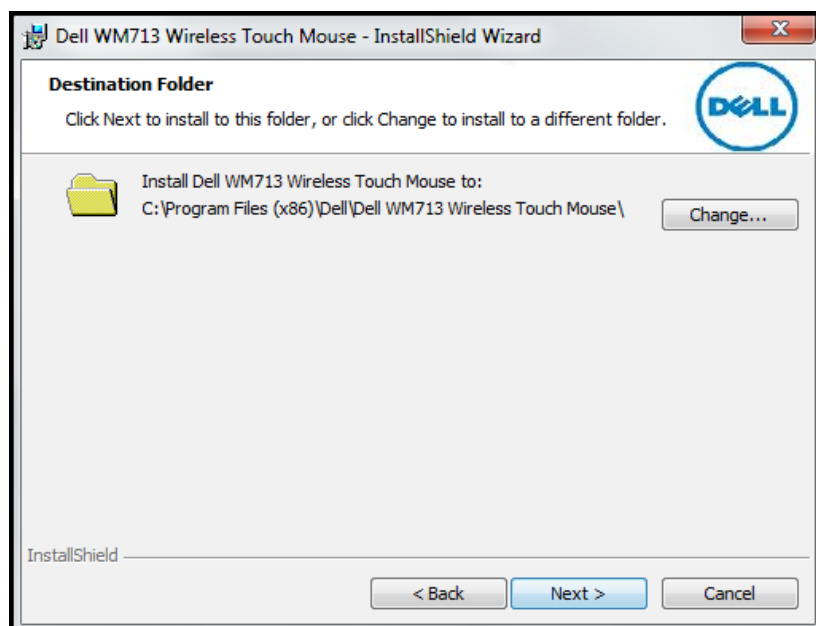
1. Insert the supplied software CD into your CD-ROM drive. The software installation file should load automatically.

If it does not, click **Start > Run**, enter the path of your CD-ROM drive (D: for example) and browse for the **setup.exe** file. Double-click the file to load the installation file.

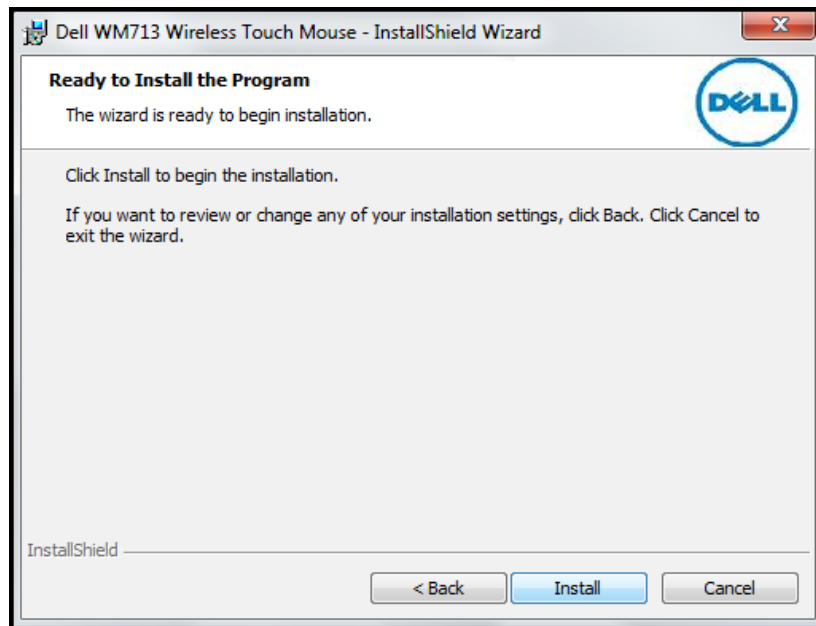
2. Click **Next** to continue.



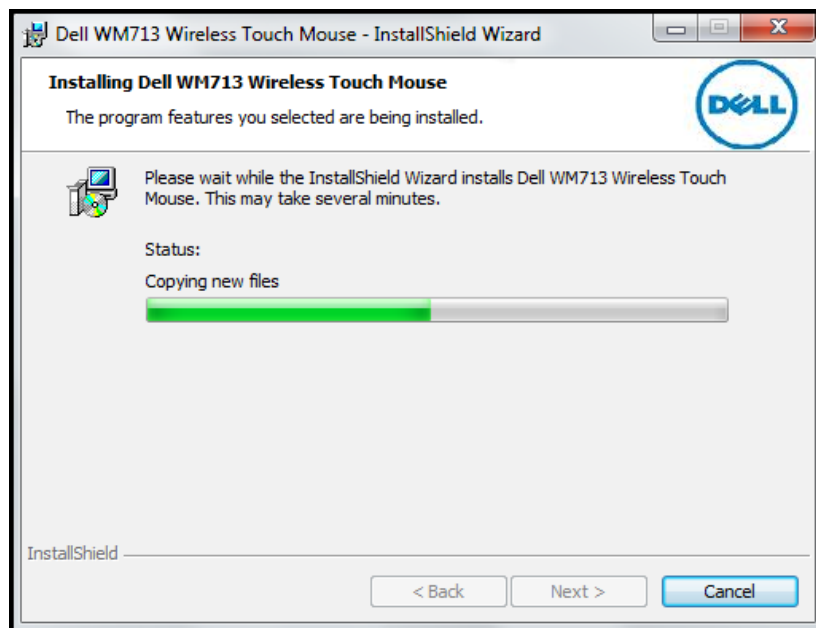
3. Specify the location to install the software and click **Next**.



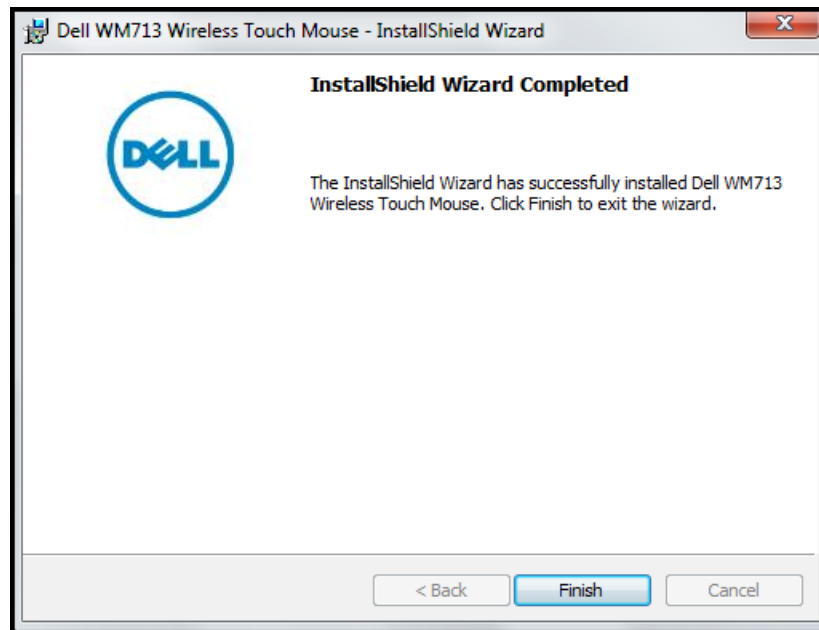
4. Click **Install** to begin installation.



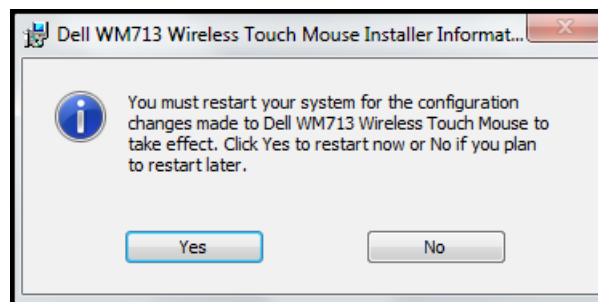
5. The software installation may take a while to complete.



6. Click **Finish** to complete the installation.



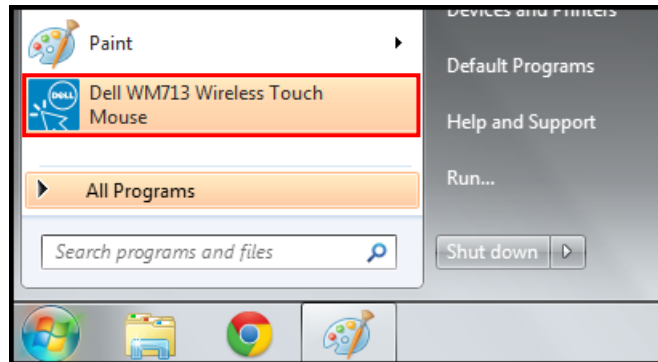
7. Click **Yes** to reboot your computer system.



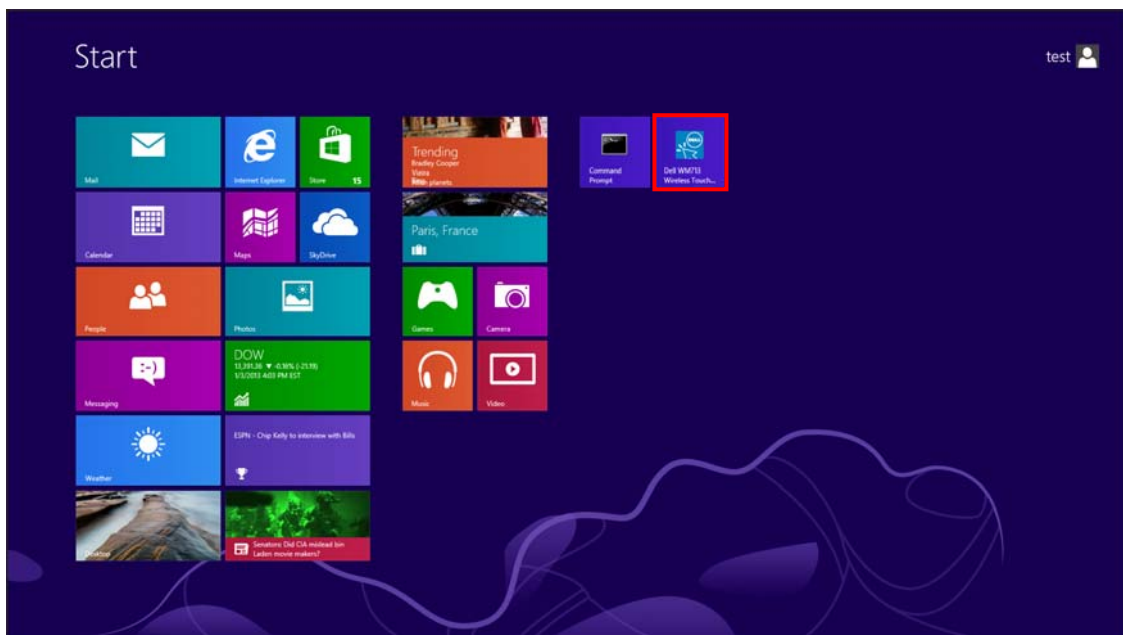
Pairing Dell™ Ultra Violet Touch Mouse

The touch mouse needs to be paired and connected to your notebook or computer before it can be used.

1. Click **Start** > **Dell WM713 Wireless Touch Mouse** to launch the software.

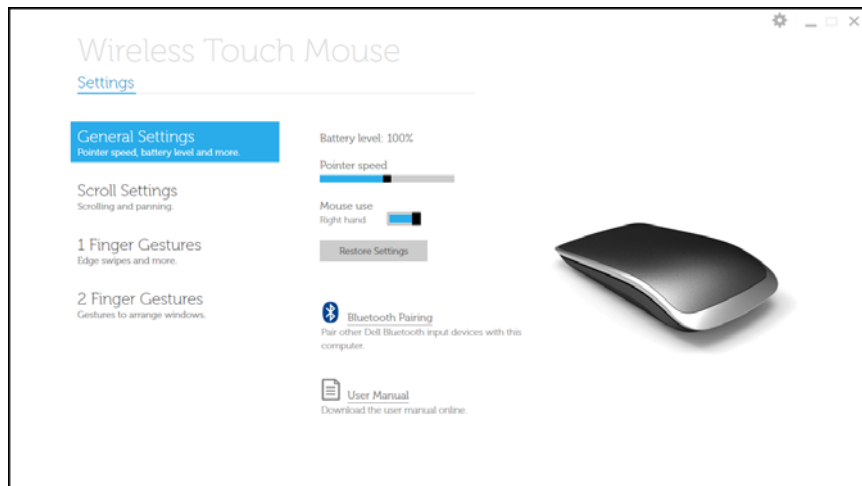


<Windows 7>



<Windows 8>

2. Click **General Settings**.



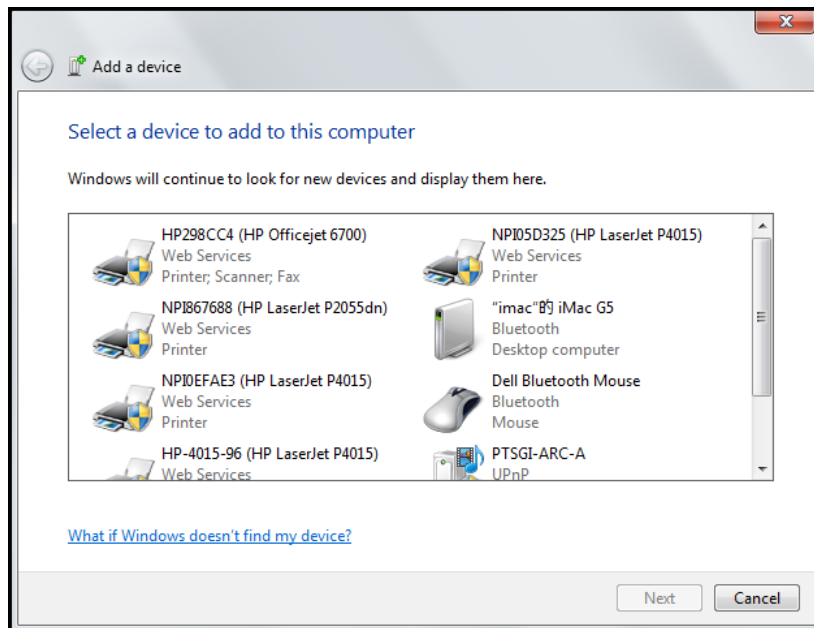
3. Press and hold the **Power** button for three seconds.

The **Blue LED** (on the **Power** button) blinks, indicating the touch mouse is in pairing mode.

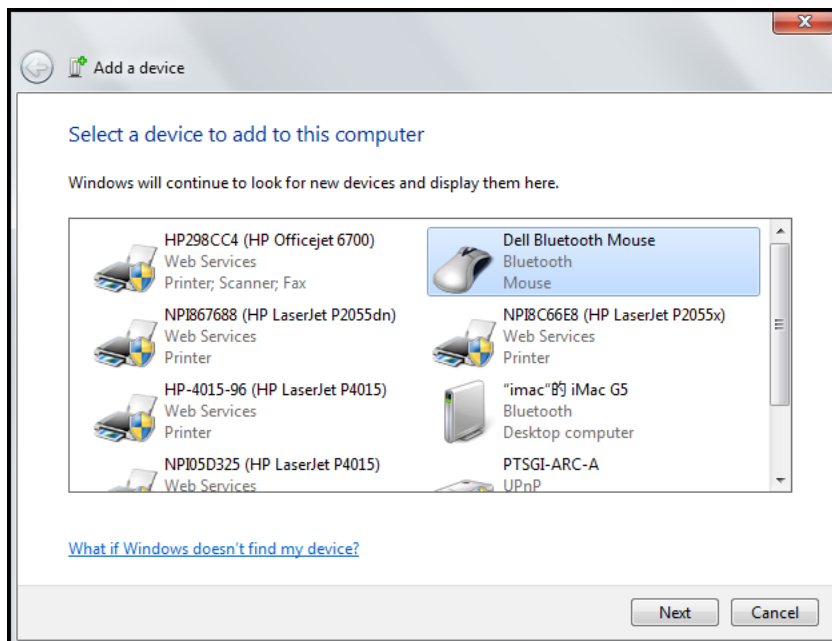


4. Click **Bluetooth Pairing**.

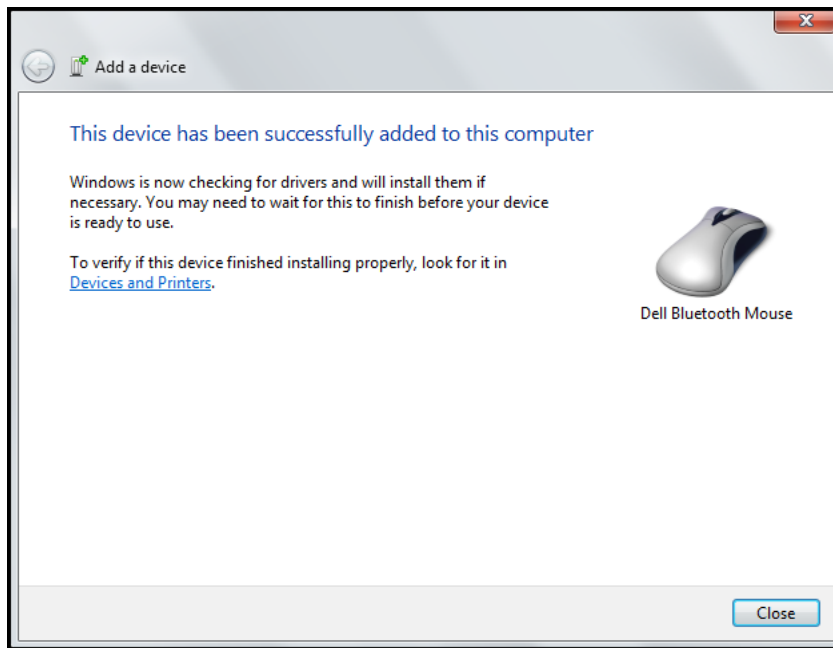
The detected devices appear on the screen.



5. Click **Dell Bluetooth Mouse** and click **Next** to continue.



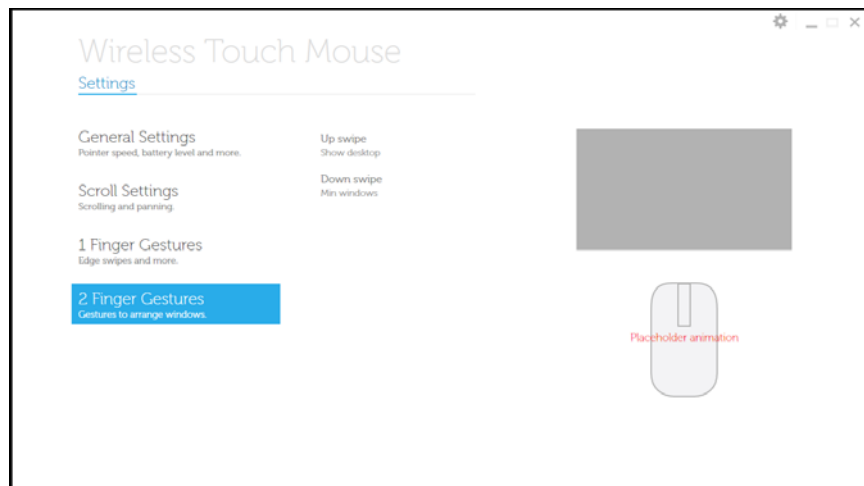
6. Click **Close** to complete the pairing connection.



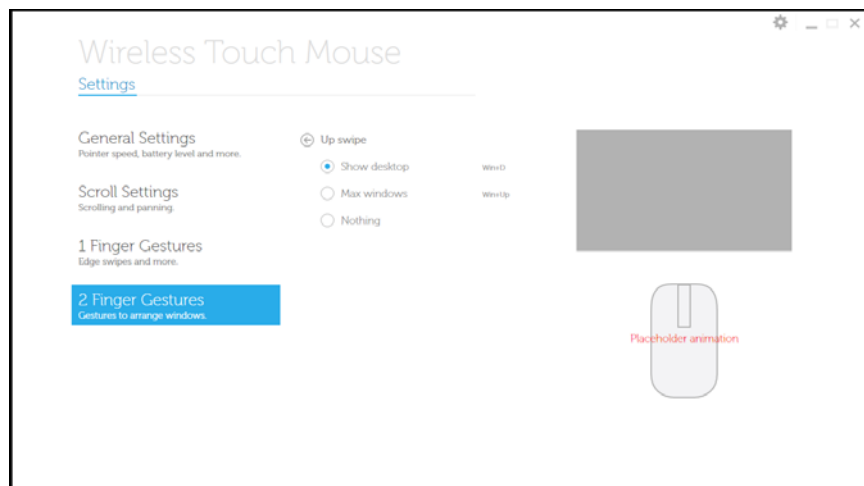
Configuring Dell™ Ultra Violet Touch Mouse Settings

You can specify functions for each button, set touch scroll speed, and configure other preferences settings via *Dell™ WM713 Wireless Touch Mouse* software.

1. Click **Start** > **Dell WM713 Wireless Touch Mouse** to launch the software.
2. To customize the setting, click the respective option and change the settings.
For example, customizing *Up Swipe* action: Click **Up swipe** and then select one of the available options.












<Select setting item>



<Adjust setting>

See the following table for all available functions/settings, and to which buttons they can be assigned.

Settings	Gesture	Options	Attributes	Windows 7	Windows 8	
General Settings	-	Battery level	%	✓	✓	
		Pointer speed	1-100	✓	✓	
		Mouse use	Left-handed		✓	✓
			Right-handed		✓	✓
Scroll Settings		Scroll	On/Off	✓	✓	
		Scroll inertia	On/Off	✓	✓	
		Scroll speed	1-100	✓	✓	
		Pan	On/Off	On/Off	✓	✓
			On/Off	On/Off	✓	✓
			1-100	1-100	✓	✓
1 Finger Gestures		Left edge swipe	App Switching	✗	✓	
			Recent Apps	✗	✓	
			Back	✓	✗	
			Forward	✓	✓	
			Nothing	✓	✓	
		Right edge swipe	Windows Charms	✗	✓	
			Back	✓	✓	
			Forward	✓	✗	
			Nothing	✓	✓	
		Swipe to left	Windows Charms	✗	✓	
			Back	✓	✓	
			Forward	✓	✗	
			Nothing	✓	✓	
		Swipe to right	App Switching	✗	✓	
			Recent Apps	✗	✓	
			Back	✓	✗	
Forward			✓	✓		
Nothing			✓	✓		

Settings	Gesture	Options	Attributes	Windows 7	Windows 8
2 Finger Gestures		Up swipe	Search	✗	✓
			Max windows	✓	✓
			Show desktop	✓	✓
			Nothing	✓	✓
		Down swipe	Show desktop	✓	✓
			Min windows	✓	✓
			Windows Start	✗	✓
			Show desktop	✓	✓

Troubleshooting: Dell™ Ultra Violet Touch Mouse

If you have problems with your mouse:

- Check if the mouse battery level is low.
- Check if the mouse is turned on.
- Check if the USB receiver is plugged into a computer USB port. Remove and insert the USB receiver again.
- Check if the USB receiver is securely connected to the computer USB port. A loose connection may cause the mouse to malfunction.
- If you still have a problem, use another USB port or restart your computer.
- Only use the mouse on a clean, flat, non-slippery surface in order to ensure smooth and accurate cursor action.
- Check the computer system requirements to make sure that your system is compatible.
- For further assistance with any other questions you may have, please contact our customer service or your dealer for technical support.

Specifications: Dell™ Ultra Violet Touch Mouse

- General
- Physical Characteristic
- Bluetooth 3.0 Wireless
- Electrical
- Environmental

General

Manufacturer	Primax Electronics Co., Ltd.
Model number	WM713
Connection type	Bluetooth 3.0
Supported Operating Systems	Microsoft® Windows® 7 SP1 or later , Windows 8

Electrical

Battery life 1 months before low battery indicator LED is triggered

Battery require Lithium-ion (embedded)

Physical Characteristic

Height	24.90 mm
Width	58.4 mm
Length	108.10 mm
Weight	118 g

Environmental

Operating temperature	0 °C to 40 °C
Storage temperature	-40 °C to 65 °C
Operating humidity	90%max Relative Humidity, non condensing
Storage humidity	90%max Relative Humidity, non condensing

Bluetooth 3.0 Wireless

Radio transmission	The baseband transmit data is GFSK Modulated in the 2.4GHz ISM band
Range	10m radio range. No performance degradation up to max radio range (10m).
